

# Panasonic

## BUSINESS



## Professional **DISPLAYS** Line-up Catalog June 2019



# Panasonic®

Weights and dimensions shown are approximate. Depending on the temperature or humidity conditions, uneven brightness may be observed. This is not a malfunction. This unevenness will disappear while applying current continuously. If not, consult the distributor. Specifications and appearance are subject to change without notice. Product availability differs depending on region and country. This product may be subject to export control regulations. Windows, and PowerPoint are trademarks of Microsoft Corporation in the United States and other countries. Android is a registered trademark or trademark of Google Inc. Macintosh, Mac, Mac OS X, iPad, iPhone, iPod touch and iTunes are trademarks of Apple Inc., registered in the U.S. and other countries. Intel® is registered trademark or trademark of Intel Corporation, registered in the U.S. and other countries and regions or registered trademarks. HDMI, the HDMI logo, and High-Definition Multimedia Interface are trademarks or registered trademarks of HDMI Licensing LLC in the United States and other countries. Crestron Connected™ is a trademark of Crestron Electronics, Inc. Miracast are trademarks or registered trademarks of Wi-Fi Alliance. HDBaseT is a trademark of the HDBaseT Alliance. "LinkRay", "LinkRay" icon and OpenPort PLATFORM are trademarks of Panasonic Corporation. All other trademarks are the property of their respective trademark owners. Images on screen are simulated. © 2019 Panasonic Corporation. All rights reserved.



Mobile App -  
The information of the Panasonic projectors and professional displays from your iOS/Android devices.  
[panasonic.net/cns/prodisplays/support/mobile\\_app/](http://panasonic.net/cns/prodisplays/support/mobile_app/)



For the latest information about Panasonic Professional Displays, please visit:  
Professional Display Global Website - [panasonic.net/cns/prodisplays](http://panasonic.net/cns/prodisplays)  
YouTube - [www.youtube.com/PanasonicProDisplay](http://www.youtube.com/PanasonicProDisplay)  
Facebook - [www.facebook.com/panasonicprojectoranddisplay](http://www.facebook.com/panasonicprojectoranddisplay)

All information included here is valid as of June 2019





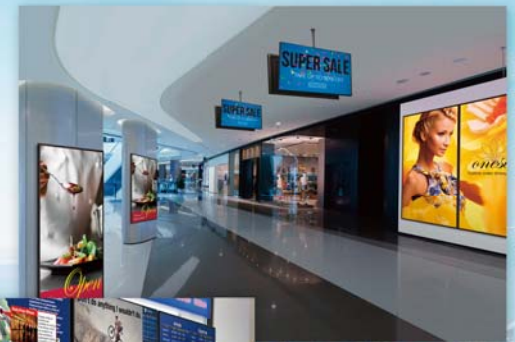
# Creating Displays for Tomorrow's Communication. Advanced Solutions Linking People and Information.



Brandenburg Gate Museum



TOTO Showroom





# Panasonic Professional Displays Lineup

Standard

## SQ1 Series

500cd/m<sup>2</sup>

98" TH-98SQ1W  
86" TH-86SQ1W

Available from September 2019\*

65" TH-65SQ1W  
55" TH-55SQ1W

49" TH-49SQ1W



\*Actual resolution: 3840 x 2160p

### LinkRay Compatible Models

## SF2H Series

700cd/m<sup>2</sup>

80" TH-80SF2HU  
70" TH-70SF2HU

## SF1H Series

700cd/m<sup>2</sup>

55" TH-55SF1HU  
49" TH-49SF1HU  
42" TH-42SF1HU



## LF80 Series

700cd/m<sup>2</sup>

55" TH-55LF80U  
49" TH-49LF80U  
42" TH-42LF80U

## SF2 Series

450cd/m<sup>2</sup>

65" TH-65SF2U  
55" TH-55SF2U  
49" TH-49SF2U  
43" TH-43SF2U



(LF80 Series only)

### OpenPort PLATFORM® Models

## AF1 Series

500cd/m<sup>2</sup>

55" TH-55AF1U  
49" TH-49AF1U  
42" TH-42AF1U



Entry

## EQ1 Series

350cd/m<sup>2</sup>

86" TH-86EQ1W  
75" TH-75EQ1W  
65" TH-65EQ1U

55" TH-55EQ1U  
50" TH-50EQ1U  
43" TH-43EQ1U



\*1 Actual resolution: 3840 x 2160p

## CQ1 Series

400cd/m<sup>2</sup>

Available from August 2019\*

86" TH-86CQ1U  
75" TH-75CQ1U

65" TH-65CQ1U  
55" TH-55CQ1U

50" TH-50CQ1U  
43" TH-43CQ1U



\*Actual resolution: 3840 x 2160p

## EF1 Series

350cd/m<sup>2</sup>

(75EF1: 410 cd/m<sup>2</sup>)

75" TH-75EF1U  
65" TH-65EF1U  
32" TH-32EF1U

## LFE8 Series

350cd/m<sup>2</sup>

48" TH-48LFE8U  
43" TH-43LFE8U



\* The availability varies depending on model.

# Panasonic Professional Displays Lineup

Video Wall

Available from December 2019

VF2H 700cd/m<sup>2</sup> 55" TH-55VF2HU

VF1H 700cd/m<sup>2</sup> 55" TH-55VF1HU

Available from December 2019

VF2 500cd/m<sup>2</sup> 55" TH-55VF2U

LFV70 700cd/m<sup>2</sup> 55" TH-55LFV70U

Available from October 2019

LFV9 500cd/m<sup>2</sup> 55" TH-55LFV9U

LFV8 500cd/m<sup>2</sup> (TH-49LFV8: 450 cd/m<sup>2</sup>) 55" 49" TH-55LFV8U TH-49LFV8U

LFV6 500cd/m<sup>2</sup> 55" TH-55LFV6U



Touch Screen

BQE1/BFE1 400cd/m<sup>2</sup>

75" TH-75BQE1W 65" TH-65BFE1W



[BQE1 only]  
\*Actual resolution : 3840 x 2160p

## Pict Descriptions

 4K display (Actual resolution: 3840 x 2160p)	 Using a DisplayPort daisy chain connection to output a 4K image onto a 2x2 video wall	 High Dynamic Range compatible, rendering image contrast		
 Capable of 24-hour continuous operation	 Capable of 18-hour continuous operation	 Capable of 16-hour continuous operation	 USB media player	 USB media player supporting 4K images
 Equipped with protective glass for LCD panel	 Capable of finger writing on LCD screen, and touch operation	 LCD panel usable as a touch panel	 CAT5e or higher STP cable transmits Full-HD video, audio, and control signals	 CAT5e or higher STP cable transmits 4K video, audio, and control signals
 Bezel-to-bezel thickness	 Information transmission technology using Panasonic original technology "Light ID"	 Portrait installation possible	 Intel® SDM specification compatible slot	

## Model Number Legend

F Full HD  
Q 4K UHD

TH-86SQ1

TH: Display body  
86: Screen size  
S/L: Standard  
E/C: Entry  
V: Video wall  
B: Touch screen



Model no.	TH-98SQ1W	TH-86SQ1W
Screen Size (Diagonal)/Aspect Ratio	97.5-inch (2476.9 mm)/16:9	85.6-inch (2174.2 mm)/16:9
Panel Type	IPS / Direct LED	IPS / Edge LED
Effective Display Area (W x H)	2158.8 x 1214.3 mm (84.99" x 47.80")	1895.0 x 1065.9 mm (74.60" x 41.96")
Resolution (H x V)	3840 x 2160	3840 x 2160
Brightness (Typ)	500 cd/m <sup>2</sup>	500 cd/m <sup>2</sup>
Contrast Ratio	1300:1	1200:1
Dynamic Contrast Ratio	50000:1	50000:1
Response Time	8 ms (G to G)	8 ms (G to G)
Viewing Angle (Horizontal/Vertical)	178°/178° (CR≥10)	178°/178° (CR≥10)
Panel Surface Treatment	Anti-Glare (Haze 28 %)	Anti-Glare (Haze 28 %)
HDMI In	HDMI TYPE-A Connector x 2 <sup>1</sup>	
DisplayPort In	DisplayPort x 1	
DisplayPort Out	DisplayPort x 1	
USB	USB Connector (TYPE-A) x 2, DC 5 V/2 A, DC 5V/1A (USB 3.0 Supported)	
DVI-D In	DVI-D 24-pin x 1	
Audio In (L/R)	Stereo Mini Jack (M3) x 2 (Shared with PC In)	
PC In	Mini D-sub 15-pin x 1 (Female) <sup>2</sup>	
Audio In (L/R)	Stereo Mini Jack (M3) x 2 (Shared with DVI-D In)	
Audio Out	Stereo Mini Jack (M3) x 1	
Serial In	D-sub 9-pin x 1, RS232C Compatible	
LAN	RJ45 x 1, 10 BASE-T / 100 BASE-TX, Compatible with PLink™	
DIGITAL LINK	RJ45 x 1, 100 BASE-TX, Compatible with long reach mode and PLink™	
IR In/Out	Stereo Mini Jack (M3) x 1 / x 1	
Function Slot	x1 (Intel® SDM Specification Capability)	
Power Requirements	110-127 V AC, 50 Hz/60 Hz	
Power Consumption	685 W	480 W
Power Off Condition	Approx. 0.3 W	Approx. 0.3 W
Stand-by Condition	Approx. 0.5 W	Approx. 0.5 W
Dimensions (W x H x D)	2194 x 1249 x 90* mm (86.35" x 49.15" x 3.54"*)	1928 x 1099 x 86* mm (75.91" x 43.27" x 3.39"*)
Carton Size (W x H x D)	2513 x 1704 x 450 mm (98.9" x 67.1" x 17.7")	2224 x 1427 x 373 mm (87.6" x 56.2" x 14.7")
Bezel Width	16.0 mm (0.63") (T/B/L/R)	15.2 mm (0.6") (T/B/L/R)
Weight	Approx. 90.0 kg (198.5 lbs.)	Approx. 66.0 kg (145.5 lbs.)
Gross Weight	Approx. 138.0 kg (304.3 lbs.)	Approx. 89.0 kg (196.3 lbs.)
Pitch for Wall-Hanging	800 x 500 mm (31.5" x 19.7") VESA Compliant	600 x 400 mm (23.6" x 15.8") VESA Compliant
Protective Glass	-	
Built-in Speaker	20 W [10 W + 10 W]	
Orientation	Landscape/Portrait	
Tilting Angle	0-20 degrees forward/backward with landscape/portrait setting	
Operating Environment	Temperature : 0 °C to 40 °C (32°F to 104°F) / Humidity: 20% to 80% (Non-condensation)	
Storage Environment	Temperature : -20 °C to 60 °C (4°F to 140°F) / Humidity: 20% to 80% (Non-condensation)	
Operating Time <sup>3</sup>	24 h/day	
Wall-hanging Bracket	TY-WK98PV1	TY-WK98PV1
Early Warning Software <sup>4</sup>	ET-SWA100/105 Series	ET-SWA100/105 Series
Digital Interface Box	ET-YFB100G	ET-YFB100G
DIGITAL LINK Switcher	ET-YFB200G	ET-YFB200G
Auto Display Adjustment Upgrade Kit <sup>5</sup>	TY-VUK10	TY-VUK10

\*1: HDCP2.2 supported, \*2: RGB/YpBpR switchable.

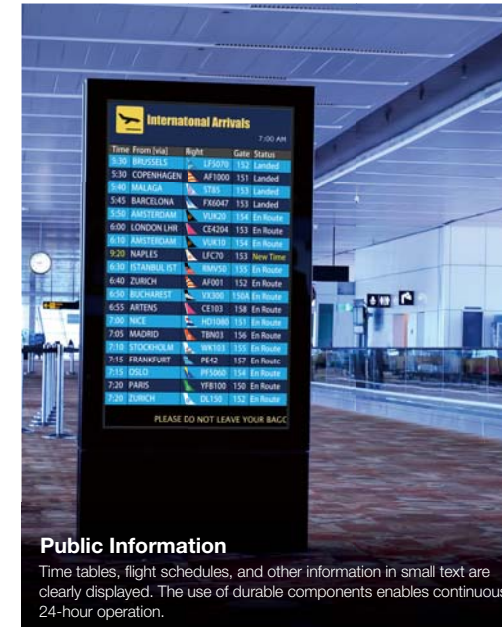
\*3: In case of long time, the moving image is recommended to be displayed. If you display a still picture for an extended period, the image retention might remain on the screen. However, image retention can gradually disappear by displaying a moving images.

\*4: Multi Monitoring & Control Software Ver.2.0 or later is required. Part number suffix may differ depending on the license type.

\*5: Download the latest Video Wall Manager from Global Website in advance. (<https://panasonicnet/cns/prodisplays/download/software/vwm>)

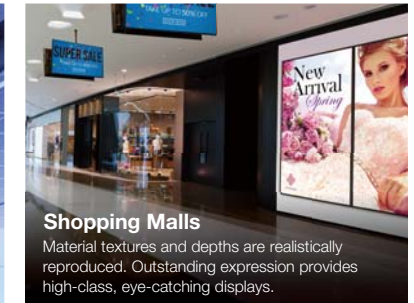
\*The handle part excluded, the thickness is 81 mm (3.17": TH-98SQ1)/76 mm (2.99": TH-86SQ1).

## A wide range of professional applications



### Public Information

Time tables, flight schedules, and other information in small text are clearly displayed. The use of durable components enables continuous, 24-hour operation.



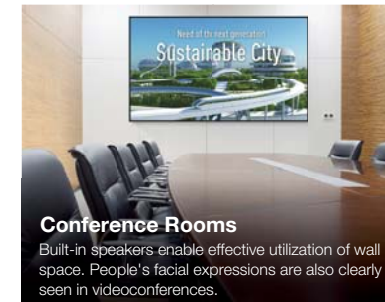
### Shopping Malls

Material textures and depths are realistically reproduced. Outstanding expression provides high-class, eye-catching displays.



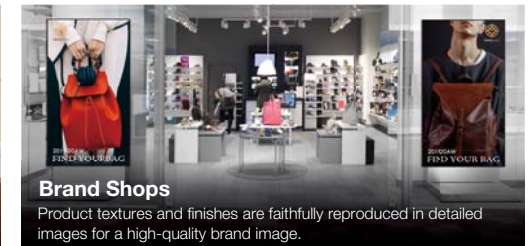
### Meeting Spaces

Large-screen, highly detailed images are ideal for simulation applications. CAD and other precise illustrations can be shared among many people.



### Conference Rooms

Built-in speakers enable effective utilization of wall space. People's facial expressions are also clearly seen in videoconferences.



### Brand Shops

Product textures and finishes are faithfully reproduced in detailed images for a high-quality brand image.



### Broadcasting Stations and Studios

Beautiful, large-screen 4K images provide clear images.



### Art Galleries and Museums

The brush strokes and materials of exhibit items are beautifully expressed in 4K images. Ideal for use in art gallery and museum events.



# SQ1 Series

Available from September 2019\*

\* The availability varies depending on model.



Model no.	TH-65SQ1W	TH-55SQ1W	TH-49SQ1W
<b>DISPLAY PANEL</b>			
Screen size (Diagonal)/Aspect Ratio	64.5-inch (1638.9 mm) /16:9	54.6-inch (1387.8 mm) /16:9	48.5-inch (1232.0 mm) /16:9
Panel Type	IPS/Edge LED	IPS/Edge LED	IPS/Edge LED
Effective Display Area (W x H)	1428.4 x 803.5 mm (56.23" x 31.63")	1209.6 x 680.4 mm (47.62" x 26.78")	1073.8 x 604.0 mm (42.27" x 23.77")
Resolution (H x V)	3840 x 2160	3840 x 2160	3840 x 2160
Brightness	500 cd/m <sup>2</sup>	500 cd/m <sup>2</sup>	500 cd/m <sup>2</sup>
Contrast Ratio	1100:1	1100:1	1100:1
Response Time	8.0 ms (G to G)	8.0 ms (G to G)	8.0 ms (G to G)
Viewing Angle (Horizontal/Vertical)	178° / 178° (CR≥10)	178° / 178° (CR≥10)	178° / 178° (CR≥10)
Panel Surface Treatment	Anti-Glare (Haze 28 %)	Anti-Glare (Haze 28 %)	Anti-Glare (Haze 28 %)
<b>TERMINAL</b>			
HDMI In	HDMI TYPE A Connector x 2 (HDCP2.2 supported)		HDMI TYPE A Connector x 2 (HDCP2.2 supported)
DisplayPort In	DisplayPort x 1 (HDCP2.2 supported)*1		DisplayPort x 1 (HDCP2.2 supported)*1
DisplayPort Out	DisplayPort x 1 (HDCP1.4 supported)*1		DisplayPort x 1 (HDCP1.4 supported)*1
USB	USB Connector (TYPE-A) x 2, DC 5 V/2 A, DC 5V/1A (USB 3.0 Supported)		USB Connector (TYPE-A) x 2, DC 5 V/2 A, DC 5V/1A (USB 3.0 Supported)
DVI-D In	DVI-D 24-pin x 1 (DVI Revision 1.0 Compliant), HDCP 1.1 compatible		DVI-D 24-pin x 1
Audio In (L/R)	Stereo Mini Jack (M3) x 2 (Shared with PC In)		Stereo Mini Jack (M3) x 2 (Shared with PC In)
PC In	Mini D-sub 15-pin x 1 (Female)		Mini D-sub 15-pin x 1 (Female)
Audio In (L/R)	Stereo Mini Jack (M3) x 2 (Shared with DVI-D In)		Stereo Mini Jack (M3) x 2 (Shared with DVI-D In)
Audio Out	30 W (15 W + 15 W) 10% THD		30 W (15 W + 15 W) 10% THD
Serial In	D-Sub 9-pin x 1, RS232C Compatible		D-Sub 9-pin x 1, RS232C Compatible
DIGITAL LINK	RJ45 x 1, 100 BASE-TX, Compatible with long reach mode and PLink™		RJ45 x 1, 100 BASE-TX, Compatible with long reach mode and PLink™
LAN	RJ45 x 1, 10 BASE-T / 100 BASE-TX, Compatible with PLink™		RJ45 x 1, 10 BASE-T / 100 BASE-TX, Compatible with PLink™
IR In/Out	Stereo Mini Jack (M3) x 1 / x 1		Stereo Mini Jack (M3) x 1 / x 1
Function Slot	x1 (Intel® SDM specification)		x1 (Intel® SDM specification)
<b>GENERAL</b>			
Power Requirements	110-127 V AC, 50 Hz/60 Hz		110-127 V AC, 50 Hz/60 Hz
Power Consumption	TBD		TBD
Power Off Condition	TBD		TBD
Stand-by Condition	TBD		TBD
Dimensions (W x H x D)	1458 x 836 x 74 mm (57.40" x 32.90" x 2.91")	1240 x 714 x 74 mm (48.82" x 28.09" x 2.91")	1104 x 637 x 73 mm (43.48" x 25.08" x 2.88")
Carton Size (W x H x D)	TBD		TBD
Bezel Width	T:11.7 mm (0.46"), B:15.3 mm (0.60"), L/R:12.2 mm (0.48")	T:12.2 mm (0.48"), B:15.8 mm (0.62"), L/R:12.7 mm (0.50")	T/B:14.2 mm (0.56"), L/R:12.9 mm (0.51")
Weight	TBD		TBD
Gross Weight	TBD		TBD
Pitch for Wall-Hanging	VESA compliant 400 x 400 mm (15.8" x 15.8")		VESA compliant 400 x 400 mm (15.8" x 15.8")
Built-in Speaker	Yes		Yes
Orientation	Landscape/Portrait*2		Landscape/Portrait*2
Tilting Angle*3	TBD		TBD
Operating Environment	Temperature: 0 °C to 40 °C (32 °F to 104 °F)*4 / 0 °C to 35 °C (32 °F to 95 °F)*5, Humidity: 20 % to 80 % (No Condensation)		Temperature: 0 °C to 40 °C (32 °F to 104 °F)*4 / 0 °C to 35 °C (32 °F to 95 °F)*5, Humidity: 20 % to 80 % (No Condensation)
Storage Environment	Temperature: -20 °C to 60 °C (4 °F to 140 °F), Humidity: 20 % to 80 % (No Condensation)		Temperature: -20 °C to 60 °C (4 °F to 140 °F), Humidity: 20 % to 80 % (No Condensation)
Operating Time*6	24 h/day		24 h/day
<b>OPTIONS</b>			
Pedestal	TY-ST55PE9	TY-ST55PE9	TY-ST43PE9
Wall-Hanging Bracket	TY-WK98PV1	—	—
Digital Interface Box	ET-YFB100G	ET-YFB100G	ET-YFB100G
DIGITAL LINK Switcher	ET-YFB200G	ET-YFB200G	ET-YFB200G
Early Warning Software*7	ET-SWA100/105 Series	ET-SWA100/105 Series	ET-SWA100/105 Series
Auto Display Adjustment Upgrade Kit*8	TY-VUK10	TY-VUK10	TY-VUK10

\*1: Input: HDCP 2.2 Output: NG / Input: HDCP 1.4 Output: No HDCP Output: No HDCP

\*2: When installing the display vertically, be sure that the power indicator comes to the right side.

\*3: Please contact your sales representative with regard to the tilt angle before installation.

\*4: For up to 1400 m (4593 ft) altitude.

\*5: For between 1400m (4593 ft) to 2800 m (9186 ft) altitude.

\*6: In case of long time, the moving image is recommended to be displayed. If you display a still picture for an extended period, the image retention might remain on the screen. However, image retention can gradually disappear by displaying a moving images.

\*7: Multi Monitoring & Control Software Ver. 2.1 or later is required. Part number suffix may differ depending on the license type.

\*8: Download the latest Video Wall Manager from Global Website in advance. (<https://panasonic.net/cns/prodisplays/download/software/wvm>)

# SF2H/SF1H Series



Standard

Model no.	TH-80SF2HU	TH-70SF2HU	TH-55SF1HU	TH-49SF1HU	TH-42SF1HU
<b>DISPLAY PANEL</b>					
Screen Size (Diagonal)/Aspect Ratio	80.0-inch (2032 mm)/16:9	69.5-inch (1765 mm)/16:9	54.6-inch (1387 mm)/16:9	48.5-inch (1232 mm)/16:9	41.9-inch (1064 mm)/16:9
Panel Type	VA Panel/E-LED	VA Panel/E-LED	IPS Panel/E-LED	IPS Panel/E-LED	IPS Panel/E-LED
Effective Display Area (W x H)	1771 x 996 mm (69.7" x 39.2")	1538 x 865 mm (60.5" x 34.0")	1209 x 680 mm (47.6" x 26.7")	1073 x 604 mm (42.2" x 23.7")	927 x 521 mm (36.5" x 20.5")
Resolution (H x V)	1920 x 1080	1920 x 1080	1920 x 1080	1920 x 1080	1920 x 1080
Brightness (Typ) <sup>1</sup>	700 cd/m <sup>2</sup>	700 cd/m <sup>2</sup>	700 cd/m <sup>2</sup>	700 cd/m <sup>2</sup>	700 cd/m <sup>2</sup>
Contrast Ratio	5000:1	5000:1	1300:1	1300:1	1300:1
Dynamic Contrast Ratio	50000:1	50000:1	50000:1	50000:1	50000:1
Response Time	4.0 ms (G to G)	8.0 ms (G to G)	8 ms (G to G)	8 ms (G to G)	8 ms (G to G)
Viewing Angle (Horizontal/Vertical)	176°/176° (CR≥10)	176°/176° (CR≥10)	178°/178° (CR≥10)	178°/178° (CR≥10)	178°/178° (CR≥10)
Panel Surface Treatment	Anti-Glare (Haze 5 %)	Anti-Glare (Haze 12 %)	Anti-Glare (Haze 10 %)	Anti-Glare (Haze 10 %)	Anti-Glare (Haze 10 %)
<b>TERMINAL</b>					
VIDEO In	4-pole Mini Jack (M3) x 1 (Audio In shared with DVI-D In/PC In/Video In)			BNC x 1 (Shared with Component /RGB Y/G)	
Audio In (L/R)				Stereo Mini Jack (M3) x 1 (Shared with Component In)	
HDMI In	HDMI Type A Connector x 2			HDMI Type A Connector x 2	
Component/RGB In	—			BNC x 1 set (Shared with Video In)	
Audio In (L/R)	—			Stereo Mini Jack (M3) x 1 (Shared with Video In)	
DVI-D In	DVI-D 24-pin x 1 (DVI Revision 1.0 compliant), HDCP 1.1 compatible			DVI-D 24-pin x 1	
Audio In (L/R)	4-pole Mini Jack (M3) x 1 (Shared with PC/VIDEO In)			Stereo Mini Jack (M3) x 1 (Shared with PC In)	
DVI-D Out	DVI-D 24-pin x 1 (DVI Revision 1.0 compliant), HDCP 1.1 compatible			DVI-D 24-pin x 1	
PC In	Mini D-sub 15-pin x 1 (DDC2B compatible)			Mini D-Sub 15-pin x 1 (Female)	
Audio In (L/R)	4-pole Mini Jack (M3) x 1 (Shared with DVI-D/VIDEO In)			Stereo Mini Jack (M3) x 1 (Shared with DVI-D In)	
Audio Out (L/R)	Stereo Mini Jack (M3) x 1			Stereo Mini Jack (M3) x 1	
Serial In/Out	D-sub 9-pin x 1/x 1, RS-232C Compatible			D-sub 9-pin x 1/x 1, RS-232C Compatible	
DIGITAL LINK	RJ45 x 1, 100BASE-TX, Compatible with PLink™ (Shared with LAN)			RJ45 x 1 100BASE-TX, Compatible with PLink™ (Shared with LAN)	
LAN	RJ45 x 1, 100BASE-TX, Compatible with PLink™ (Shared with DIGITAL LINK)			RJ45 x 1 100BASE-TX, Compatible with PLink™ (Shared with DIGITAL LINK)	
IR In/Out	Stereo Mini Jack (M3) x 1 / x 1			Stereo Mini Jack (M3) x 1 / x 1	
USB	USB Type A Connector x 1, DC 5 V/1 A (USB 3.0 is not supported)			USB Type A Connector x 1, DC 5V/1A (USB 3.0 is not supported.)	
<b>GENERAL</b>					
Power Requirements	110-127 V AC, 50 Hz/60 Hz	110-127 V AC, 50 Hz/60 Hz	110-127 V AC, 50 Hz/60 Hz	110-127 V AC, 50 Hz/60 Hz	110-127 V AC, 50 Hz/60 Hz
Power Consumption	380 W	235 W	190 W	175 W	155 W
Power Off Condition	Approx. 0.3 W	Approx. 0.3 W	Approx. 0.3 W	Approx. 0.3 W	Approx. 0.3 W
Stand-by Condition	Approx. 0.5 W	Approx. 0.5 W	Approx. 0.5 W	Approx. 0.5 W	Approx. 0.5 W
Dimensions (W x H x D)	1835 x 1060 x 82 mm (72.3" x 41.8" x 3.3")	1580 x 919 x 80 mm (62.2" x 36.2" x 3.2")	1229 x 699 x 72* mm (48.4" x 27.6" x 2.8*")	1093 x 623 x 72* mm (43.1" x 24.6" x 2.8*")	947 x 541 x 72* mm (37.3" x 21.3" x 2.8*")
Carton Size (W x H x D)	1970 x 1191 x 351 mm (77.6" x 46.9" x 13.9")	1715 x 1050 x 351 mm (67.6" x 41.4" x 13.9")	1444 x 922 x 223 mm (56.9" x 36.3" x 8.8")	1308 x 846 x 203 mm (51.5" x 33.4" x 8.0")	1123 x 743 x 203 mm (44.3" x 29.3" x 8.0")
Bezel Width	R/L/T/B: 28.5 mm (1.12")	R/L: 18.6 mm (0.73"), T/B: 23.6 mm (0.92")	R/L/T/B: 6.3 mm (0.25")	R/L/T/B: 6.3 mm (0.25")	R/L/T/B: 6.3 mm (0.25")
Weight	Approx. 62.0 kg (135.0 lbs.)	Approx. 45.0 kg (99.0 lbs.)	Approx. 24.9 kg (54.9 lbs.)	Approx. 19.2 kg (42.4 lbs.)	Approx. 15.5 kg (34.2 lbs.)
Gross Weight	Approx. 73.0 kg (159.0 lbs.)	Approx. 55.0 kg (119.0 lbs.)	Approx. 33.0 kg (72.8 lbs.)	Approx. 26.0 kg (57.4 lbs.)	Approx. 20.0 kg (44.1 lbs.)
Pitch for Wall-Hanging	VESA compliant 600 x 400 mm (23.6" x 15.8")	VESA compliant 400 x 400 mm (15.8" x 15.8")	VESA Compliant 400 x 400 mm (15.8" x 15.8")	VESA Compliant 400 x 400 mm (15.8" x 15.8")	VESA compliant 200 x 200 mm (7.9" x 7.9")
Built-in Speakers	20 W [10 W + 10 W]		20 W [10 W + 10 W]		20 W [10 W + 10 W]
Orientation	Landscape/Portrait (Angle adjustment 0-45 degrees for both left and right: landscape setting only)		Landscape/Portrait (Angle adjustment 0-45 degrees for both left and right)		
Tilting Angle	0-20 degrees forward/backward with landscape/portrait setting (Angle adjustment is not possible for forward/backward tilting installation.)		0-45 degrees forward/backward with landscape/portrait setting* <sup>1</sup> (Angle adjustment is not possible for forward/backward tilting installation.)		
Operating Environment	Temperature: 0 °C to 40 °C (32 °F to 104 °F) <sup>2</sup> ; 0 °C to 35 °C (32 °F to 95 °F) <sup>3</sup> / Humidity: 20 % to 80 % (Non-condensation)		Temperature: 0 °C to 40 °C (32 °F to 104 °F) <sup>2</sup> ; 0 °C to 35 °C (32 °F to 95 °F) <sup>3</sup> / Humidity: 20 % to 80 % (Non-condensation)		
Storage Environment	Temperature: -20 °C to 60 °C (-4 °F to 140 °F) / Humidity: 20 % to 80 % ( Non-condensation)		Temperature: -20 °C to 60 °C (-4 °F to 140 °F) / Humidity: 20 % to 80 % (Non-condensation)		
Operating Time <sup>4</sup>	24 h/day		24 h/day		
<b>OPTIONS</b>					
Pedestal	TY-ST75PE9	TY-ST75PE9	TY-ST43PE8	TY-ST43PE8	TY-ST43PE8
Digital Interface Box	ET-YFB100G	ET-YFB100G	ET-YFB100G	ET-YFB100G	ET-YFB100G
DIGITAL LINK Switcher	ET-YFB200G	ET-YFB200G	ET-YFB200G	ET-YFB200G	ET-YFB200G
Early Warning Software <sup>5</sup>	ET-SWA100 Series	ET-SWA100 Series	ET-SWA100 Series	ET-SWA100 Series	ET-SWA100 Series
Auto Display Adjustment Upgrade Kit <sup>6</sup>	TY-VUK10	TY-VUK10	TY-VUK10	TY-VUK10	TY-VUK10
Multi Window Processor <sup>7</sup>	ET-MWP100G	ET-MWP100G	ET-MWP100G	ET-MWP100G	ET-MWP100G

\*1: Please contact your sales representative with regard to the tilt angle before installation. \*2: For up to 1400 m (4593 ft) altitude.

\*3: For between 1400 m (4593 ft) and 2800 m (9186 ft) altitude.

\*4: In case of long time, the moving image is recommended to be displayed. If you display a still picture for an extended period, the image retention might remain on the screen. However, image retention can gradually disappear by displaying a moving images.

\*5: Multi Monitoring & Control Software Ver2.0 or later is required. Suffix of the part number may differ depending on the license type.

\*6: Download the latest Video Wall Manager from Global Website in advance. (<https://panasonic.net/cns/prodisplays/download/software/wm/>)

\*7: The availability varies depending on the country.

+ The brightness of the display panel is equivalent to about 75% its full capacity, when the Light ID is transmitted. The displayed image may flicker, but this is due to a change in the brightness during Light ID transmission and not due to trouble.

\* The handle part excluded, the thickness is 57 mm (2.3").

# LF80 Series



Model no.	TH-55LF80U	TH-49LF80U	TH-42LF80U
<b>DISPLAY PANEL</b>			
Screen Size (Diagonal)/Aspect Ratio	54.6-inch (1387 mm)/16:9	48.5-inch (1232 mm)/16:9	41.9-inch (1064 mm)/16:9
Panel Type	IPS Panel/E-LED	IPS Panel/E-LED	IPS Panel/E-LED
Effective Display Area (W x H)	1209 x 680 mm (47.6" x 26.7")	1073 x 604 mm (42.2" x 23.7")	927 x 521 mm (36.5" x 20.5")
Resolution (H x V)	1920 x 1080	1920 x 1080	1920 x 1080
Brightness (Typ)	700 cd/m <sup>2</sup>	700 cd/m <sup>2</sup>	700 cd/m <sup>2</sup>
Contrast Ratio	1300:1	1300:1	1300:1
Dynamic Contrast Ratio	50000:1	50000:1	50000:1
Response Time	8 ms (G to G)	8 ms (G to G)	8 ms (G to G)
Viewing Angle (Horizontal/Vertical)	178°/178° (CR≥10)	178°/178° (CR≥10)	178°/178° (CR≥10)
Panel Surface Treatment	Anti-Glare (Haze 10 %)	Anti-Glare (Haze 10 %)	Anti-Glare (Haze 10 %)
<b>TERMINAL</b>			
VIDEO In	BNC x 1 (Shared with Component /RGB Y/G)		BNC x 1 (Shared with Component /RGB Y/G)
Audio In (L/R)	Stereo Mini Jack (M3) x 1 (Shared with Component In)		Stereo Mini Jack (M3) x 1 (Shared with Component In)
HDMI In	HDMI Type A Connector x 2		HDMI Type A Connector x 2
Component/RGB In	BNC x 1 set (Shared with Video In)		BNC x 1 set (Shared with Video In)
Audio In (L/R)	Stereo Mini Jack (M3) x 1 (Shared with Video In)		Stereo Mini Jack (M3) x 1 (Shared with Video In)
DVI-D In	DVI-D 24-pin x 1		DVI-D 24-pin x 1
Audio In (L/R)	Stereo Mini Jack (M3) x 1 (Shared with PC In)		Stereo Mini Jack (M3) x 1 (Shared with PC In)
DVI-D Out	DVI-D 24-pin x 1		DVI-D 24-pin x 1
PC In	Mini D-Sub 15-pin x 1 (Female)		Mini D-Sub 15-pin x 1 (Female)
Audio In (L/R)	Stereo Mini Jack (M3) x 1 (Shared with DVI-D In)		Stereo Mini Jack (M3) x 1 (Shared with DVI-D In)
Audio Out (L/R)	Stereo Mini Jack (M3) x 1		Stereo Mini Jack (M3) x 1
Serial In/Out	D-sub 9-pin x 1/x 1, RS-232C Compatible		D-sub 9-pin x 1/x 1, RS-232C Compatible
DIGITAL LINK	RJ45 x 1 100BASE-TX, Compatible with PLink™ (Shared with LAN)		RJ45 x 1 100BASE-TX, Compatible with PLink™ (Shared with LAN)
LAN	RJ45 x 1 100BASE-TX, Compatible with PLink™ (Shared with DIGITAL LINK)		RJ45 x 1 100BASE-TX, Compatible with PLink™ (Shared with DIGITAL LINK)
IR In/Out	Stereo Mini Jack (M3) x 1 / x 1		Stereo Mini Jack (M3) x 1 / x 1
USB	USB Type A Connector x 1, DC 5V/1A (USB 3.0 is not supported.)		USB Type A Connector x 1, DC 5V/1A (USB 3.0 is not supported.)
<b>GENERAL</b>			
Power Requirements	110-127 V AC, 50 Hz/60 Hz	110-127 V AC, 50 Hz/60 Hz	110-127 V AC, 50 Hz/60 Hz
Power Consumption	190 W	175 W	155 W
Power Off Condition	Approx. 0.3 W	Approx. 0.3 W	Approx. 0.3 W
Stand-by Condition	Approx. 0.5 W	Approx. 0.5 W	Approx. 0.5 W
Dimensions (W x H x D)	1229 x 699 x 72*mm (48.4" x 27.6" x 2.8"*)	1093 x 623 x 72*mm (43.1" x 24.6" x 2.8"*)	947 x 541 x 72*mm (37.3" x 21.3" x 2.8"*)
Carton Size (W x H x D)	1444 x 922 x 223 mm (56.9" x 36.3" x 8.8")	1308 x 846 x 203 mm (51.5" x 33.4" x 8.0")	1123 x 743 x 203 mm (44.3" x 29.3" x 8.0")
Bezel Width	6.3 mm (0.25")	6.3 mm (0.25")	6.3 mm (0.25")
Weight	Approx. 24.7 kg (54.5 lbs.)	Approx. 19.0 kg (41.9 lbs.)	Approx. 15.3 kg (33.7 lbs.)
Gross Weight	Approx. 32.0 kg (70.6 lbs.)	Approx. 26.0 kg (57.4 lbs.)	Approx. 20.0 kg (44.1 lbs.)
Pitch for Wall-Hanging	VESA Compliant 400 x 400 mm (15.8" x 15.8")	VESA Compliant 400 x 400 mm (15.8" x 15.8")	VESA compliant 200 x 200 mm (7.9" x 7.9")
Built-in Speakers	20 W [10 W + 10 W]		20 W [10 W + 10 W]
Orientation	Landscape/Portrait (Angle adjustment 0-45 degrees for both left and right)		Landscape/Portrait (Angle adjustment 0-45 degrees for both left and right)
Tilting Angle	0-45 degrees forward/backward with landscape/portrait setting*1 (Angle adjustment is not possible for forward/backward tilting installation.)		0-45 degrees forward/backward with landscape/portrait setting*1 (Angle adjustment is not possible for forward/backward tilting installation.)
Operating Environment	Temperature: 0 °C to 40 °C (32°F to 104°F)*3 : 0 °C to 35 °C (32 °F to 95 °F)*4 / Humidity: 20 % to 80 % (Non-condensation)		Temperature: 0 °C to 40 °C (32°F to 104°F)*3 : 0 °C to 35 °C (32 °F to 95 °F)*4 / Humidity: 20 % to 80 % (Non-condensation)
Storage Environment	Temperature: -20 °C to 60 °C (-4 °F to 140 °F) / Humidity: 20 % to 80 % (Non-condensation)		Temperature: -20 °C to 60 °C (-4 °F to 140 °F) / Humidity: 20 % to 80 % (Non-condensation)
Operating Time*5	24 h/day		24 h/day
<b>OPTIONS</b>			
Pedestal	TY-ST43PE8	TY-ST43PE8	TY-ST43PE8
Digital Interface Box	ET-YFB100G	ET-YFB100G	ET-YFB100G
DIGITAL LINK Switcher	ET-YFB200G	ET-YFB200G	ET-YFB200G
Early Warning Software*6	ET-SWA100 Series	ET-SWA100 Series	ET-SWA100 Series
Auto Display Adjustment Upgrade Kit*7	TY-VUK10	TY-VUK10	TY-VUK10
Multi Window Processor*8	ET-MWP100G	ET-MWP100G	ET-MWP100G

\*1: Please contact your sales representative with regard to the tilt angle before installation.

\*2: If the temperature is 40 °C to 60 °C (104 °F to 140 °F), please keep in humidity 20 % to 40 % . \*3: For up to 1400 m (4593 ft) altitude.

\*4: For between 1400 m (4593 ft) and 2800 m (9186 ft) altitude.

\*5: In case of long time, the moving image is recommended to be displayed. If you display a still picture for an extended period, the image retention might remain on the screen. However, image retention can gradually disappear by displaying a moving images.

\*6: Multi Monitoring & Control Software Ver2.0 or later is required. Suffix of the part number may differ depending on the license type.

\*7: Download the latest Video Wall Manager from Global Website in advance. (<https://panasonic.net/cns/prodisplays/download/software/wm/>)

\*8: The availability varies depending on the country.

\* The handle part excluded, the thickness is 57 mm (2.3").



# SF2 Series

Standard



Model no.	TH-65SF2U	TH-55SF2U	TH-49SF2U	TH-43SF2U
<b>DISPLAY PANEL</b>				
Screen Size (Diagonal)/Aspect Ratio	64.5-inch (1639 mm)/16:9	54.6-inch (1387 mm)/16:9	48.5-inch (1232 mm)/16:9	42.5-inch (1079 mm)/16:9
Panel Type	IPS Panel/E-LED	IPS Panel/E-LED	IPS Panel/E-LED	IPS Panel/E-LED
Effective Display Area (W x H)	1428 x 803 mm (52.6" x 31.6")	1209 x 680 mm (47.6" x 26.7")	1073 x 604 mm (42.2" x 23.7")	941 x 529 mm (37.0" x 20.8")
Resolution (H x V)	1920 x 1080	1920 x 1080	1920 x 1080	1920 x 1080
Brightness (Typ)	450 cd/m <sup>2</sup>	450 cd/m <sup>2</sup>	450 cd/m <sup>2</sup>	450 cd/m <sup>2</sup>
Contrast Ratio	1300:1	1100:1	1100:1	1100:1
Dynamic Contrast Ratio	50000:1	50000:1	50000:1	50000:1
Response Time	10 ms (G to G)	12 ms (G to G)	12 ms (G to G)	12 ms (G to G)
Viewing Angle (Horizontal/Vertical)	178°/178° (CR≥10)	178°/178° (CR≥10)	178°/178° (CR≥10)	178°/178° (CR≥10)
Panel Surface Treatment	Anti-Glare (Haze 1 %)	Anti-Glare (Haze 1 %)	Anti-Glare (Haze 1 %)	Anti-Glare (Haze 1 %)
<b>TERMINAL</b>				
VIDEO In/Audio In	4-pole Mini Jack (M3) x 1		4-pole Mini Jack (M3) x 1	
HDMI In	HDMI Type A Connector x 2		HDMI Type A Connector x 2	
Component/RGB In	-		-	
Audio In (L/R)	-		-	
DVI-D In	DVI-D 24-pin x 1 (DVI Revision 1.0 compliant), HDCP 1.1 compatible		DVI-D 24-pin x 1 (DVI Revision 1.0 compliant), HDCP 1.1 compatible	
Audio In (L/R)	4-pole Mini Jack (M3) x 1 (Shared with PC/VIDEO In)		4-pole Mini Jack (M3) x 1 (Shared with PC/AV In)	
DVI-D Out	DVI-D 24-pin x 1 (DVI Revision 1.0 compliant), HDCP 1.1 compatible		DVI-D 24-pin x 1 (DVI Revision 1.0 compliant), HDCP 1.1 compatible	
PC In	Mini D-Sub 15-pin x1 (DDC2B compatible)		Mini D-Sub 15-pin x 1 (DDC2B compatible)	
Audio In (L/R)	4-pole Mini Jack (M3) x 1 (Shared with DVI-D/VIDEO In)		4-pole Mini Jack (M3) x 1 (Shared with DVI-D/AV In)	
Audio Out (L/R)	Stereo Mini Jack (M3) x 1		Stereo Mini Jack (M3) x 1	
Serial In/Out	D-sub 9-pin x 1/x 1, RS-232C Compatible		D-sub 9-pin x 1/x 1, RS-232C Compatible	
DIGITAL LINK	-		-	
LAN	RJ45 x 1, 100BASE-TX, Compatible with PLink™		RJ45 x 1, 100BASE-TX, Compatible with PLink™	
IR In/Out	Stereo Mini Jack (M3) x 1/ x 1		Stereo Mini Jack (M3) x 1/ x 1	
USB	USB TYPE A Connector x 1, DC 5V/1A (USB 3.0 is not supported)		USB TYPE A Connector x 1, DC 5V/1A (USB 3.0 is not supported)	
<b>GENERAL</b>				
Power Requirements	110-127 V AC, 50 Hz/60 Hz		110-127 V AC, 50 Hz/60 Hz	
Power Consumption	155 W		110 W	
Power Off Condition	Approx. 0.3 W		Approx. 0.3 W	
Stand-by Condition	Approx. 0.5 W		Approx. 0.5 W	
Dimensions (W x H x D)	1452 x 834 x 64 mm (57.2" x 32.9" x 2.5")	1234 x 710 x 46 mm (48.5" x 28.0" x 1.8")	1098 x 634 x 46 mm (43.2" x 24.9" x 1.8")	965 x 559 x 46 mm (38.0" x 22.0" x 1.8")
Carton Size (W x H x D)	1648 x 1076 x 280 mm (64.9" x 42.4" x 11.1")	1448 x 952 x 223 mm (57.0" x 37.5" x 8.8")	1292 x 883 x 203 mm (50.9" x 34.8" x 8.0")	1141 x 779 x 203 mm (44.9" x 30.7" x 8.0")
Bezel Width	T/R/L: 9.5 mm (0.38"), B: 15.7 mm (0.62")	T/R/L: 9.5 mm (0.38"), B: 15.5mm (0.61")	T/R/L: 9.5 mm (0.38"), B: 15.5 mm (0.61")	T/R/L: 9.5 mm (0.38"), B: 15.5 mm (0.61")
Weight	Approx. 29.8 kg (65.7 lbs.)	Approx. 18.0 kg (39.7 lbs.)	Approx. 14.7 kg (32.4 lbs.)	Approx. 10.7 kg (23.6 lbs.)
Gross Weight	Approx. 40.0 kg (88.2 lbs.)	Approx. 25.0 kg (55.1 lbs.)	Approx. 20.0 kg (44.1 lbs.)	Approx. 15.0 kg (33.1 lbs.)
Pitch for Wall-Hanging	VESA Compliant 400 x 400 mm (15.8" x 15.8")		VESA Compliant 400 x 400 mm (15.8" x 15.8")	
Built-in Speakers	20W [10 W + 10 W]		20 W [10 W + 10 W]	
Orientation <sup>*1</sup>	Landscape/Portrait (Angle adjustment 0 - 45 degrees for both left and right with landscape setting. When installing the portrait setting, be sure that the Power Indicator comes to the upside.)		Landscape/Portrait (Angle adjustment 0 - 45 degrees for both left and right with landscape setting. When installing the portrait setting, be sure that the Power Indicator comes to the upside.)	
Tilting Angle <sup>*1</sup>	Landscape setting: 0 - 45 degrees forward/backward Portrait setting: 0 - 45 degrees forward/backward		Landscape setting: 0 - 45 degrees forward/backward Portrait setting: 0 - 45 degrees forward/backward	
Operating Environment	Temperature: 0 °C to 40 °C (32°F to 104°F) / Humidity: 20 % to 80 % (Non Condensation)		Temperature: 0 °C to 40 °C (32°F to 104°F) <sup>*3</sup> ; 0 °C to 35 °C (32 °F to 95 °F) <sup>*4</sup> / Humidity: 20 % to 80 % (Non-condensation)	
Storage Environment	Temperature: -20 °C to 60 °C (-4 °F to 140 °F) <sup>*2</sup> / Humidity: 20 % to 80 % (Non Condensation)		Temperature: -20 °C to 60 °C (-4 °F to 140 °F) / Humidity: 20 % to 80 % (Non-condensation)	
Operating Time <sup>*5</sup>	24 h/day		24 h/day	
<b>OPTIONS</b>				
Pedestal	TY-ST55PE9	TY-ST55PE9	TY-ST43PE9	TY-ST43PE9
Early Warning Software <sup>*6</sup>	ET-SWA100 Series	ET-SWA100 Series	ET-SWA100 Series	ET-SWA100 Series
Auto Display Adjustment Upgrade Kit <sup>*7</sup>	TY-VUK10	TY-VUK10	TY-VUK10	TY-VUK10

\*1: Please contact your sales representative with regard to the tilt angle before installation. Note that a gap of 0.5 mm or more is required when installing multiple displays.

\*2: If the temperature is 40 °C to 60 °C (104 °F to 140 °F), please keep in humidity 20 % to 40 % . \*3: For up to 1400 m (4593 ft) altitude.

\*4: For between 1400 m (4593 ft) and 2800 m (9186 ft) altitude.

\*5: In case of long time, the moving image is recommended to be displayed. If you display a still picture for an extended period, the image retention might remain on the screen. However, image retention can gradually disappear by displaying a moving images.

\*6: Multi Monitoring & Control Software Ver2.0 or later is required. Suffix of the part number may differ depending on the license type.

\*7: Download the latest Video Wall Manager from Global Website in advance. (<https://panasonic.net/cms/prodisplays/download/software/vwm/>)

# AF1 Series



Standard

Model no.	TH-55AF1U	TH-49AF1U	TH-42AF1U
<b>DISPLAY PANEL</b>			
Screen Size (Diagonal)/Aspect Ratio	54.6-inch (1387 mm)/16:9	48.5-inch (1232 mm)/16:9	41.9-inch (1064 mm)/16:9
Panel Type	IPS Panel/E-LED	IPS Panel/E-LED	IPS Panel/E-LED
Effective Display Area (W x H)	1209 x 680 mm (47.6" x 26.7")	1073 x 604 mm (42.2" x 23.7")	927 x 521 mm (36.5" x 20.5")
Resolution (H x V)	1920 x 1080	1920 x 1080	1920 x 1080
Brightness (Typ)	500 cd/m <sup>2</sup>	500 cd/m <sup>2</sup>	500 cd/m <sup>2</sup>
Contrast Ratio	1300:1	1300:1	1300:1
Dynamic Contrast Ratio	50000:1	50000:1	50000:1
Response Time	8 ms (G to G)	8 ms (G to G)	8 ms (G to G)
Viewing Angle (Horizontal/Vertical)	178°/178° (CR≥10)	178°/178° (CR≥10)	178°/178° (CR≥10)
Panel Surface Treatment	Anti-Glare (Haze 10 %)	Anti-Glare (Haze 10 %)	Anti-Glare (Haze 10 %)
<b>PLATFORM</b>			
OS	Android 4.4.3		Android 4.4.3
CPU	Cortex-A9, 1.0 GHz (Quad)		Cortex-A9, 1.0 GHz (Quad)
Memory	RAM 1 GB / ROM 8 GB		RAM 1 GB / ROM 8 GB
<b>TERMINAL</b>			
<b>Display</b>			
VIDEO In	BNC x 1 (Shared with Component In)		BNC x 1 (Shared with Component In)
Audio In (L/R)	Stereo Mini Jack (M3) x 1 (Shared with Component In)		Stereo Mini Jack (M3) x 1 (Shared with Component In)
HDMI In	HDMI Type A Connector x 2		HDMI Type A Connector x 2
Component/RGB In	BNC x 1 set (Shared with VIDEO In)		BNC x 1 set (Shared with VIDEO In)
Audio In (L/R)	Stereo Mini Jack (M3) x 1 (Shared with Video In)		Stereo Mini Jack (M3) x 1 (Shared with Video In)
DVI-D In	DVI-D 24-pin x 1		DVI-D 24-pin x 1
Audio In (L/R)	Stereo Mini Jack (M3) x 1 (Shared with PC In)		Stereo Mini Jack (M3) x 1 (Shared with PC In)
DVI-D Out	DVI-D 24-pin x 1		DVI-D 24-pin x 1
PC In	Mini D-Sub 15-pin x1 (Female)		Mini D-Sub 15-pin x1 (Female)
Audio In (L/R)	Stereo Mini Jack (M3) x 1 (Shared with DVI-D In)		Stereo Mini Jack (M3) x 1 (Shared with DVI-D In)
Audio Out (L/R)	Stereo Mini Jack (M3) x 1		Stereo Mini Jack (M3) x 1
Serial In/Out	D-sub 9-pin x 1/x 1, RS-232C Compatible		D-sub 9-pin x 1/x 1, RS-232C Compatible
USB	USB Connector (TYPE A) x 1, DC 5 V/1 A (USB3.0 is not supported)		USB Connector (TYPE A) x 1, DC 5 V/1 A (USB3.0 is not supported)
IR In/Out	Stereo Mini Jack (M3) x 1 / x 1		Stereo Mini Jack (M3) x 1 / x 1
<b>OpenPort PLATFORM</b>			
LAN	RJ45 x 1 for Network Connection, 10BASE-T/100BASE-TX/1000BASE-T, Compatible with PjLink™		RJ45 x 1 for Network Connection, 10BASE-T/100BASE-TX/1000BASE-T, Compatible with PjLink™
USB	USB2.0 Connector (TYPE A) x 3, DC 5 V/500 mA		USB2.0 Connector (TYPE A) x 3, DC 5 V/500 mA
Micro-USB	Micro USB Connector x 1		Micro USB Connector x 1
microSD card slot	microSD, microSDHC x 1		microSD, microSDHC x 1
Wireless LAN	IEEE 802.11a/b/g/n		IEEE 802.11a/b/g/n
<b>GENERAL</b>			
Power Requirements	110-127 V AC, 50 Hz/60 Hz	110-127 V AC, 50 Hz/60 Hz	110-127 V AC, 50 Hz/60 Hz
Power Consumption	190 W	175 W	155 W
Power Off Condition	Approx. 0.3 W	Approx. 0.3 W	Approx. 0.3 W
Stand-by Condition	Approx. 0.5 W (When [OpenPort PLATFORM standby] is set to [Off]) Approx. 20 W (When [OpenPort PLATFORM standby] is set to [On])		Approx. 0.5 W (When [OpenPort PLATFORM standby] is set to [Off]) Approx. 20 W (When [OpenPort PLATFORM standby] is set to [On])
Dimensions (W x H x D)	1229 x 699 x 72* mm (48.4" x 27.6" x 2.8"*)	1093 x 623 x 72* mm (43.1" x 24.6" x 2.8"*)	947 x 541 x 72* mm (37.3" x 21.3" x 2.8"*)
Carton Size (W x H x D)	1444 x 922 x 223 mm (56.9" x 36.3" x 8.8")	1308 x 846 x 203 mm (51.5" x 33.4" x 8.0")	1123 x 743 x 203 mm (44.3" x 29.3" x 8.0")
Bezel Width	6.3 mm (0.25")	6.3 mm (0.25")	6.3 mm (0.25")
Weight	Approx. 25.0 kg (55.2 lbs.)	Approx. 19.3 kg (42.6 lbs.)	Approx. 15.6 kg (34.4 lbs.)
Gross Weight	Approx. 33.0 kg (72.8 lbs.)	Approx. 26.0 kg (57.4 lbs.)	Approx. 21.0 kg (46.3 lbs.)
Pitch for Wall-Hanging	VESA Compliant 400x 400 mm (15.8" x 15.8")	VESA Compliant 400x 400 mm (15.8" x 15.8")	VESA Compliant 200 x 200 mm (7.9" x 7.9")
Built-in Speakers	20 W [10 W + 10 W]		20 W [10 W + 10 W]
Orientation	Landscape/Portrait (Angle adjustment 0-45 degrees for both left and right)		Landscape/Portrait (Angle adjustment 0-45 degrees for both left and right)
Tilting Angle*1	0-45 degrees forward/backward with landscape/portrait setting*1 (Angle adjustment is not possible for forward/backward tilting installation.)		0-45 degrees forward/backward with landscape/portrait setting*1 (Angle adjustment is not possible for forward/backward tilting installation.)
Operating Environment	Temperature: 0 °C to 40 °C (32 °F to 104 °F)*2 ; 0 °C to 35 °C (32 °F to 95 °F)*3 / Humidity: 20 % to 80 % (Non-condensation)		Temperature: 0 °C to 40 °C (32 °F to 104 °F)*2 ; 0 °C to 35 °C (32 °F to 95 °F)*3 / Humidity: 20 % to 80 % (Non-condensation)
Storage Environment	Temperature: -20 °C to 60 °C (-4 °F to 140 °F) / Humidity: 20 % to 80 % (Non Condensation)		Temperature: -20 °C to 60 °C (-4 °F to 140 °F) / Humidity: 20 % to 80 % (Non Condensation)
Operating Time*4	24 h/day		24 h/day
<b>OPTIONS</b>			
Pedestal	TY-ST43PE8	TY-ST43PE8	TY-ST43PE8
Early Warning Software*5	ET-SWA100 Series	ET-SWA100 Series	ET-SWA100 Series
Auto Display Adjustment Upgrade Kit*6	TY-VUK10	TY-VUK10	TY-VUK10

\*1: Please contact your sales representative with regard to the tilt angle before installation. \*2: For up to 1400 m (4593 ft) altitude. \*3: For between 1400 m (4593 ft) and 2800 m (9186 ft) altitude. \*4: In case of long time, the moving image is recommended to be displayed. If you display a still picture for an extended period, the image retention might remain on the screen. However, image retention can gradually disappear by displaying a moving images. \*5: Multi Monitoring & Control Software Ver2.0 or later is required. Suffix of the part number may differ depending on the license type. \*6: Download the latest Video Wall Manager from Global Website in advance. (https://panasonic.net/cns/prodisplays/download/software/wmw/)

\* The handle part excluded, the thickness is 57 mm (2.3").

## Feature video



AF1 Series: Pro Signage Display Featuring Android -based OpenPort PLATFORM

## AF1 Partners

OpenPort PLATFORM® supports applications developed and mutually checked with Panasonic by the following global partners.



\* Listed in alphabetical order.

# EQ1 Series



Model no.	TH-86EQ1W	TH-75EQ1W	TH-65EQ1U	TH-55EQ1U
<b>DISPLAY PANEL</b>				
Screen Size (Diagonal)/Aspect Ratio	85.6-inch (2174 mm) /16:9	74.5-inch (1892 mm) /16:9	64.5-inch (1639 mm) /16:9	54.6-inch (1387 mm) /16:9
Panel Type	IPS/Edge LED	VA/Edge LED	VA/Direct LED	VA/Direct LED
Effective Display Area (W x H)	1895 x 1065 mm (74.6" x 41.9")	1649 x 927 mm (64.9" x 36.5")	1428 x 803 mm (56.2" x 31.6")	1209 x 680 mm (47.6" x 26.7")
Resolution (H x V)	3840 x 2160	3840 x 2160	3840 x 2160	3840 x 2160
Brightness (Typ)	350 cd/m <sup>2</sup>	350 cd/m <sup>2</sup>	350 cd/m <sup>2</sup>	350 cd/m <sup>2</sup>
Contrast Ratio	1200:1	1200:1	4000:1	4000:1
Dynamic Contrast Ratio	50000:1	50000:1	50000:1	50000:1
Response Time	8 ms (G to G)	8 ms (G to G)	8 ms (G to G)	8 ms (G to G)
Viewing Angle (Horizontal/Vertical)	178°/178° (CR≥10)	178°/178° (CR≥10)	178°/178° (CR≥10)	178°/178° (CR≥10)
Panel Surface Treatment	Anti-Glare (Haze 28 %)	Anti-Glare (Haze 28 %)	Anti-Glare (Haze 2 %)	Anti-Glare (Haze 2 %)
<b>TERMINAL</b>				
HDMI In	HDMI TYPE-A Connector x 2 (HDCP2.2 supported)		HDMI TYPE-A Connector x 2 (HDCP2.2 supported)	
VIDEO/AV In	4-pole Mini Jack (M3) x 1 (Audio: Stereo Mini Jack (M3) x 1(Shared with DVI-D/PC In))		4-pole Mini Jack (M3) x 1 (Audio: Stereo Mini Jack (M3) x 1(Shared with DVI-D/PC In))	
DVI-D In	DVI-D 24-pin x 1, DVI Revision 1.0 Compatible (HDCP 1.1 supported)		DVI-D 24-pin x 1, DVI Revision 1.0 Compatible (HDCP 1.1 supported)	
Audio In (L/R)	Stereo Mini Jack (M3) x 1 (Shared with AV/PC In)		Stereo Mini Jack (M3) x 1 (Shared with AV/PC In)	
PC In	Mini D-sub 15-pin x 1 (Compatible with DDC 2B)		Mini D-sub 15-pin x 1 (Compatible with DDC 2B)	
Audio In (L/R)	Stereo Mini Jack (M3) x 1 (Shared with AV/DVI-D In)		Stereo Mini Jack (M3) x 1 (Shared with AV/DVI-D In)	
USB	USB Connector (TYPE A) x 1, DC 5 V/2 A (USB 3.0 supported)		USB Connector (TYPE A) x 1, DC 5 V/2 A (USB 3.0 supported)	
Serial In	D-sub 9-pin x 1, RS-232C Compatible		D-sub 9-pin x 1, RS-232C Compatible	
DIGITAL LINK	-		-	
LAN	RJ45 x 1, 10BASE-T/100BASE-TX/1000BASE-T, Compatible with PjLink™		RJ45 x 1, 10BASE-T/100BASE-TX/1000BASE-T, Compatible with PjLink™	
IR In/Out	Stereo Mini Jack (M3) x 1 / x 1		Stereo Mini Jack (M3) x 1 / x 1	
Audio Out	Stereo Mini Jack (M3) x 1 / Variable Output (-∞ - 0 dB) (at 1 kHz 0 dB Input, 10 kΩ Loaded)		Stereo Mini Jack (M3) x 1 / Variable Output (-∞ - 0 dB) (at 1 kHz 0 dB Input, 10 kΩ Loaded)	
<b>GENERAL</b>				
Power Requirements	110-127 V AC, 50 Hz/60 Hz	110-127 V AC, 50 Hz/60 Hz	110-127 V AC, 50 Hz/60 Hz	110-127 V AC, 50 Hz/60 Hz
Power Consumption	363 W	296 W	185 W	195 W
Power Off Condition	Approx. 0.3 W	Approx. 0.3 W	Approx. 0.3 W	Approx. 0.3 W
Stand-by Condition	Approx. 0.5 W	Approx. 0.5 W	Approx. 0.5 W	Approx. 0.5 W
Dimensions (W x H x D)	1928 x 1099 x 86 mm (76.0" x 43.3" x 3.4")	1681 x 959 x 73 mm (66.2" x 37.8" x 2.9")	1459 x 835 x 82 mm (57.5" x 32.9" x 3.3")	1240 x 712 x 62 mm (48.9" x 28.1" x 2.5")
Carton Size (W x H x D)	2224 x 1427 x 373 mm (87.6" x 56.2" x 14.7")	1832 x 1283 x 280 mm (72.2" x 50.6" x 11.1")	1655 x 1078 x 280 mm (65.2" x 42.5" x 11.1")	1365 x 864 x 185 mm (53.8" x 34.1" x 7.3")
Bezel Width	15.2 mm (0.6") (T/B/L/R)	14.8 mm (0.6") (T/B/L/R)	3.5 mm (0.6") (T/R/L), 14.5 mm (0.6") (B)	12.9 mm (0.6") (T/R/L), 14.7 mm (0.6") (B)
Weight	Approx. 66.0 kg (145.5 lbs.)	Approx. 56.0 kg (123.5 lbs.)	Approx. 27.0 kg (59.6 lbs.)	Approx. 17.0 kg (37.5 lbs.)
Gross Weight	Approx. 89.0 kg (196.3 lbs.)	Approx. 71.0 kg (156.6 lbs.)	Approx. 38.0 kg (83.8 lbs.)	Approx. 23.0 kg (50.7 lbs.)
Pitch for Wall-Hanging	600 x 400 mm (23.6" x 15.8") VESA Compliant		400 x 400 mm (15.8" x 15.8") VESA Compliant	
Built-in Speaker	20 W [10 W + 10 W]		20 W [10 W + 10 W]	
Orientation*1	Landscape/Portrait		Landscape/Portrait	
Tilting Angle*2	0-20 degrees forward/backward with landscape/portrait setting		0-20 degrees forward/backward with landscape/portrait setting	
Operating Environment	Temperature: 0 °C to 40 °C (32 °F to 104 °F) / for up to 1400 m (4593 ft) altitude, 0 °C to 35 °C (32 °F to 95 °F) / Altitude 1400-2800 m [4593 ft to 9186 ft] / Humidity: 20 % - 80 % (No condensation)		Temperature: 0 °C to 40 °C (32 °F to 104 °F) / for up to 1400 m (4593 ft) altitude, 0 °C to 35 °C (32 °F to 95 °F) / Altitude 1400-2800 m [4593 ft to 9186 ft] / Humidity: 20 % to 80 % (No condensation)	
Storage Environment	Temperature: -20 °C to 60 °C (-4 °F to 140 °F) / Humidity: 20 % to 80 % (Non condensation)		Temperature: -20 °C to 60 °C (-4 °F to 140 °F) / Humidity: 20 % to 80 % (Non condensation)	
Operating Time*3	24 h/day		18 h/day	
<b>OPTIONS</b>				
Pedestal	-	TY-ST75PE9	TY-ST55PE9	TY-ST43PE8
Wall-hanging Bracket	TY-WK98PV1	TY-WK98PV1	TY-WK98PV1	-
Early Warning Software*4	ET-SWA100 Series	ET-SWA100 Series	ET-SWA100 Series	ET-SWA100 Series

\*1: When mounting portrait setting, be sure to mount with the main unit's power lamp facing downward.

\*2: Please contact your sales representative with regard to the tilt angle before installation.

\*3: In case of long time, the moving image is recommended to be displayed. If you display a still picture for an extended period, the image retention might remain on the screen. However, image retention can gradually disappear by displaying a moving images.

\*4: Multi Monitoring & Control Software Ver.2.0 or later is required. Suffix of the part number may differ depending on the licence type.

\*5: Download the latest Video Wall Manager from Global Website in advance. ([https:// panasonic.net/cns/prodisplays/download/software/vwm/](https://panasonic.net/cns/prodisplays/download/software/vwm/))





Model no.	TH-50EQ1U	TH-43EQ1U
<b>DISPLAY PANEL</b>		
Screen Size (Diagonal)/Aspect Ratio	49.5-inch (1257 mm) /16:9	42.5-inch (1079 mm) /16:9
Panel Type	VA/Direct LED	VA/Direct LED
Effective Display Area (W x H)	1095 x 616 mm (43.1" x 24.2")	941 x 529 mm (37.0" x 20.8")
Resolution (H x V)	3840 x 2160	3840 x 2160
Brightness (Typ)	350 cd/m <sup>2</sup>	350 cd/m <sup>2</sup>
Contrast Ratio	4000:1	4000:1
Dynamic Contrast Ratio	50000:1	50000:1
Response Time	8 ms (G to G)	8 ms (G to G)
Viewing Angle (Horizontal/Vertical)	178°/178° (CR≥10)	178°/178° (CR≥10)
Panel Surface Treatment	Anti-Glare (Haze 2 %)	Anti-Glare (Haze 2 %)
<b>TERMINAL</b>		
HDMI In	HDMI TYPE-A Connector x 2 (HDCP2.2 supported)	
VIDEO/AV In	4-pole Mini Jack (M3) x 1 (Audio: Stereo Mini Jack (M3) x 1(Shared with DVI-D/PC In))	
DVI-D In	DVI-D 24-pin x 1, DVI Revision 1.0 Compatible (HDCP 1.1 supported)	
Audio In (L/R)	Stereo Mini Jack (M3) x 1 (Shared with AV/PC In)	
PC In	Mini D-sub 15-pin x 1 (Compatible with DDC 2B)	
Audio In (L/R)	Stereo Mini Jack (M3) x 1 (Shared with AV/DVI-D In)	
USB	USB Connector (TYPE A) x 1, DC 5 V/2 A (USB 3.0 supported)	
Serial In	D-sub 9-pin x 1, RS-232C Compatible	
DIGITAL LINK	-	
LAN	RJ45 x 1, 10BASE-T/100BASE-TX/1000BASE-T, Compatible with PLink™	
IR In/Out	Stereo Mini Jack (M3) x 1 / x 1	
Audio Out	Stereo Mini Jack (M3) x 1 / Variable Output (-∞ - 0 dB) (at 1 kHz 0 dB Input, 10 kΩ Loaded)	
<b>GENERAL</b>		
Power Requirements	110-127 V AC, 50 Hz/60 Hz	110-127 V AC, 50 Hz/60 Hz
Power Consumption	178 W	162 W
Power Off Condition	Approx. 0.3 W	Approx. 0.3 W
Stand-by Condition	Approx. 0.5 W	Approx. 0.5 W
Dimensions (W x H x D)	1124 x 647 x 70 mm (44.3" x 25.5" x 2.8")	969 x 560 x 61 mm (38.2" x 22.1" x 2.4")
Carton Size (W x H x D)	1238 x 795 x 185 mm (48.7" x 31.3" x 7.3")	1070 x 696 x 159 mm (42.1" x 27.4" x 6.3")
Bezel Width	11.9 mm (0.5") (T/R/L), 14.4 mm (0.6") (B)	11.9 mm (0.5") (T/R/L), 14.9 mm (0.6") (B)
Weight	Approx. 14.0 kg (30.9 lbs.)	Approx. 9.0 kg (19.9 lbs.)
Gross Weight	Approx. 19.0 kg (41.9 lbs.)	Approx. 13.0 kg (28.7 lbs.)
Pitch for Wall-Hanging	400 x 400 mm (15.8" x 15.8") VESA Compliant	200 x 200 mm (7.9" x 7.9") VESA Compliant
Built-in Speaker	20W [10W + 10W]	
Orientation*1	Landscape/Portrait	
Tilting Angle*2	0-20 degrees forward/backward with landscape/portrait setting	
Operating Environment	Temperature: 0 °C to 40 °C (32 °F to 104 °F) / for up to 1400 m (4593 ft) altitude, 0 °C to 35 °C (32 °F to 95 °F) / Altitude 1400-2800 m [4593 ft to 9186 ft] / Humidity: 20 % to 80 % (No condensation)	
Storage Environment	Temperature: -20 °C to 60 °C (-4 °F to 140 °F) / Humidity: 20 % to 80 % (Non condensation)	
Operating Time*3	18 h/day	
<b>OPTIONS</b>		
Pedestal	TY-ST43PE8	TY-ST43PE8
Wall-hanging Bracket	-	-
Early Warning Software*4	ET-SWA100 Series	ET-SWA100 Series

\*1: When mounting portrait setting, be sure to mount with the main unit's power lamp facing downward.

\*2: Please contact your sales representative with regard to the tilt angle before installation.

\*3: In case of long time, the moving image is recommended to be displayed. If you display a still picture for an extended period, the image retention might remain on the screen. However, image retention can gradually disappear by displaying a moving images.

\*4: Multi Monitoring & Control Software Ver.2.0 or later is required. Suffix of the part number may differ depending on the licence type.

\*5: Download the latest Video Wall Manager from Global Website in advance. ([https:// panasonic.net/cns/prodisplays/download/software/vwm/](https://panasonic.net/cns/prodisplays/download/software/vwm/))

## Sample applications, such as signage, conference monitors, etc., selected to match the needs

### Eye-catching videos of new fashion collections

By placing a large display horizontally, images of models in nearly life-size scale can be displayed. The texture of materials in dresses and accessories can even be rendered.

\*Life-size displays: Place an 86-inch single screen vertically.



### Use USB memory to operate self-made signage

Signage can be used in a standalone configuration without having to assemble a network. The main unit's remote control can also be used for simple playlist production, so you can operate signage without using a PC or set-top box.



### More efficient and clear images to share information

Display complicated drawings or detailed materials in an easy-to-read manner. Sharing information among participants will be more smooth. No more need to enlarge tables for easier viewing.



### Making the better use of a larger screen

Making the better use of a larger screen. The screen can be used for more efficient video conferences. Images of materials can also be refreshed in real-time during the conference.

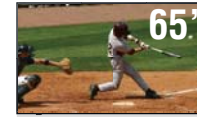
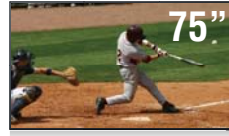
\*Separate contracts are required for video and web conference systems.



# CQ1 Series

Available from August 2019\*

\* The availability varies depending on model.



Model no.	TH-86CQ1U	TH-75CQ1U	TH-65CQ1U
<b>DISPLAY PANEL</b>			
Screen size (Diagonal)/Aspect Ratio	85.7-inch (2177.4 mm) /16:9	74.7-inch (1898.6 mm) /16:9	64.5-inch (1638.9 mm) /16:9
Panel Type	IPS/Edge LED	IPS/Edge LED	VA/Direct LED
Effective Display Area (W x H)	1897.6 x 1068.6 mm (74.70" x 42.00")	1654.1 x 932.1 mm (65.12" x 36.69")	1428.4 x 803.5 mm (56.24" x 31.63")
Resolution (H x V)	3840 x 2160	3840 x 2160	3840 x 2160
Brightness	400 cd/m <sup>2</sup>	400 cd/m <sup>2</sup>	400 cd/m <sup>2</sup>
Contrast Ratio	1200:1	1400:1	5000:1
Response Time	8.0 ms (G to G)	8.0 ms (G to G)	8.0 ms (G to G)
Viewing Angle (Horizontal/Vertical)	178° / 178° (CR>10)	178° / 178° (CR>10)	178° / 178° (CR≥20)
Panel Surface Treatment	Anti-Glare (Haze 2%)	Anti-Glare (Haze 2%)	Anti-Glare (Haze 2%)
<b>TERMINAL</b>			
HDMI In	HDMI TYPE A Connector x 2		HDMI TYPE A Connector x 2
PC In	Mini D-Sub 15-pin x 1 (Female)		Mini D-Sub 15-pin x 1 (Female)
Audio In (L/R)	Stereo Mini Jack (M3) x 1		Stereo Mini Jack (M3) x 1
USB	USB Connector (TYPE-A) x 1, DC 5 V/0.5 A (USB 2.0 Supported)	USB Connector (TYPE-A) x 1, DC 5 V/1 A (TBD) (USB 2.0 Supported)	USB Connector (TYPE-A) x 1, DC 5V/0.5A (USB 2.0 Supported)
Serial In	D-Sub 9-pin x 1, RS232C Compatible		D-Sub 9-pin x 1, RS232C Compatible
RF In (Antenna/Cable)	F Connector x 1, ATSC/NTSC Compatible		F Connector x 1, ATSC/NTSC Compatible
DIGITAL LINK	-		-
LAN	RJ45 x 1, 10 BASE-T / 100 BASE-TX		RJ45 x 1, 10 BASE-T / 100 BASE-TX
Audio Out	Pin Jack x 1		Pin Jack x 1
<b>GENERAL</b>			
Power Requirements	110-127 V AC, 50 Hz/60 Hz	110-127 V AC, 50 Hz/60 Hz	110-127 V AC, 50 Hz/60 Hz
Power Consumption	320 W (TBD)	TBD	136 W
Power Off Condition	Approx. 0.3 W (TBD)	Approx. 0.3 W (TBD)	Approx. 0.3 W (TBD)
Stand-by Condition	Approx. 0.5 W (TBD)	Approx. 0.5 W (TBD)	Approx. 0.5 W (TBD)
Dimensions (W x H*1 x D)	1929 x 1103 x 80 mm (76.0" x 43.5" x 3.2") (TBD)	1684 x 969 x 94 mm (66.3" x 38.1" x 3.7") (TBD)	1463 x 847 x 97 mm (57.6" x 33.4" x 3.8") (TBD)
Carton Size (W x H x D)	2101 x 1305 x 531 mm (82.8" x 51.4" x 21.0")	1875 x 1121 x 265 mm (73.9" x 44.2" x 10.5")	1600 x 995 x 185 mm (63.0" x 39.2" x 7.3")
Bezel Width	T/B/L/R: 15.3 mm (0.61")	T/L/R: 14.9 mm (0.59") B: 18.4 mm (0.73")	T/L/R: 15.9 mm (0.63") B: 19.9 mm (0.78")
Weight	TBD	TBD	24.0 kg (53.0 lbs.)
Gross Weight	TBD	TBD	33.0 kg (72.8 lbs.)
Pitch for Wall-Hanging	VESA compliant 600 x 400 mm (23.6" x 15.8")	VESA compliant 400 x 400 mm (15.8" x 15.8")	VESA compliant 400 x 200 mm (15.8" x 7.9")
Built-in Speaker	20 W [10 W + 10 W]		20 W [10 W + 10 W]
Orientation*2	Landscape	Landscape	Landscape
Tilting Angle*2	TBD		0-20 degrees forward with landscape setting
Operating Environment	Temperature: 0 °C to 40 °C (32 °F to 104 °F) <sup>3</sup> /0 °C to 35 °C (32 °F to 95 °F) <sup>4</sup> / Humidity: 20% to 80% (No Condensation)		Temperature: 0 °C to 40 °C (32 °F to 104 °F) <sup>3</sup> /0 °C to 35 °C (32 °F to 95 °F) <sup>4</sup> /Humidity: 20% to 80% (No Condensation)
Storage Environment	Temperature: -20 °C to 60 °C (4 °F to 140 °F), Humidity: 20% to 80% (No Condensation)		Temperature: -20 °C to 60 °C (4 °F to 140 °F)/ Humidity: 20% to 80% (No Condensation)
Operating Time*3	16 h/day	16 h/day	16 h/day

\*1: Including remote controller sensor box.

\*2: Please contact your sales representative with regard to the tilt angle before installation.

\*3: For up to 1400 m (4593 ft) altitude.

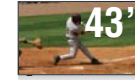
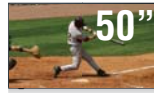
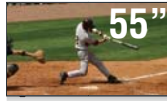
\*4: For between 1400m (4593 ft) to 2800 m (9186 ft) altitude.

\*5: In case of long time, the moving image is recommended to be displayed. If you display a still picture for an extended period, the image retention might remain on the screen. However, image retention can gradually disappear by displaying a moving images.

# CQ1 Series

Available from August 2019\*

\* The availability varies depending on model.



Model no.	TH-55CQ1U	TH-50CQ1U		TH-43CQ1U
<b>DISPLAY PANEL</b>				
Screen size (Diagonal)/Aspect Ratio	54.6-inch (1387.8 mm) /16:9	49.5-inch (1257 mm) /16:9		42.5-inch (1079.8 mm) /16:9
Panel Type	VA/Direct LED	VA/Direct LED		VA/Direct LED
Effective Display Area (W x H)	1209.6 x 680.4 mm (47.62" x 26.79")	1095.8 x 616.4 mm (43.14" x 24.27")		941.1 x 529.4 mm (37.05" x 20.84")
Resolution (H x V)	3840 x 2160	3840 x 2160		3840 x 2160
Brightness	400 cd/m <sup>2</sup>	400 cd/m <sup>2</sup>		400 cd/m <sup>2</sup>
Contrast Ratio	4000:1	4000:1		4000:1
Response Time	8.0 ms (G to G)	8.0 ms (G to G)		8.0 ms (G to G)
Viewing Angle (Horizontal/Vertical)	178° / 178° (CR≥20)	178° / 178° (CR≥20)		178° / 178° (CR≥20)
Panel Surface Treatment	Anti-Glare (Haze 2%)	Anti-Glare (Haze 2%)		Anti-Glare (Haze 2%)
<b>TERMINAL</b>				
HDMI In	HDMI TYPE A Connector x 2			HDMI TYPE A Connector x 2
PC In	Mini D-Sub 15-pin x 1 (Female)			Mini D-Sub 15-pin x 1 (Female)
Audio In (L/R)	Stereo Mini Jack (M3) x 1			Stereo Mini Jack (M3) x 1
USB	USB Connector (TYPE-A) x 1, DC 5V/0.5A (USB 2.0 Supported)			USB Connector (TYPE-A) x 1, DC 5V/0.5A (USB 2.0 Supported)
Serial In	D-Sub 9-pin x 1, RS232C Compatible			D-Sub 9-pin x 1, RS232C Compatible
RF In (Antenna/Cable)	F Connector x 1, ATSC/NTSC Compatible			F Connector x 1, ATSC/NTSC Compatible
DIGITAL LINK	-			-
LAN	RJ45 x 1, 10 BASE-T / 100 BASE-TX			RJ45 x 1, 10 BASE-T / 100 BASE-TX
Audio Out	Pin Jack x 1			Pin Jack x 1
<b>GENERAL</b>				
Power Requirements	110-127 V AC, 50 Hz/60 Hz			110-127 V AC, 50 Hz/60 Hz
Power Consumption	128 W			106 W
Power Off Condition	Approx. 0.3 W			Approx. 0.3 W
Stand-by Condition	Approx. 0.5 W			Approx. 0.5 W
Dimensions (W x H <sup>1</sup> x D)	1240 x 718 x 80 mm (48.79" x 28.3" x 3.2")	1124 x 653 x 77 mm (44.3" x 25.7" x 3.1")		969 x 566 x 77 mm (38.2" x 22.3" x 3.1")
Carton Size (W x H x D)	1375 x 860 x 179 mm (54.2" x 33.9" x 7.1")	1240 x 777 x 168 mm (48.9" x 30.6" x 6.7")		1070 x 675 x 160 mm (42.2" x 26.6" x 6.3")
Bezel Width	T/L/R: 11.9 mm (0.47") B: 14.7 mm (0.58")	T/L/R: 11.9 mm (0.47") B: 14.4 mm (0.57")		T/L/R: 11.9 mm (0.47") B: 14.9 mm (0.59")
Weight	15.0 kg (33.1 lbs.)	13.0 kg (28.7 lbs.)		9.0 kg (19.9 lbs.)
Gross Weight	21.0 kg (46.3lbs.)	17.0 kg (37.5 lbs.)		13.0 kg (28.7 lbs.)
Pitch for Wall-Hanging	VESA compliant 400 x 200 mm (15.8" x 7.9")			VESA compliant 200 x 200 mm (7.9" x 7.9")
Built-in Speaker	20W [10 W + 10 W]			20W [10 W + 10 W]
Orientation <sup>2</sup>	Landscape	Landscape		Landscape
Tilting Angle <sup>2</sup>	0-20 degrees forward with landscape setting			0-20 degrees forward with landscape setting
Operating Environment	Temperature: 0 °C to 40 °C (32 °F to 104 °F) <sup>3</sup> /0 °C to 35 °C (32 °F to 95 °F) <sup>4</sup> / Humidity: 20% to 80% (No Condensation)			Temperature: 0 °C to 40 °C (32 °F to 104 °F) <sup>3</sup> /0 °C to 35 °C (32 °F to 95 °F) <sup>4</sup> /Humidity: 20% to 80% (No Condensation)
Storage Environment	Temperature: -20 °C to 60 °C (4 °F to 140 °F), Humidity: 20% to 80% (No Condensation)			Temperature: -20 °C to 60 °C (4 °F to 140 °F)/ Humidity: 20% to 80% (No Condensation)
Operating Time <sup>3</sup>	16 h/day			16 h/day

<sup>1</sup>: Including remote controller sensor box.

<sup>2</sup>: Please contact your sales representative with regard to the tilt angle before installation.

<sup>3</sup>: For up to 1400 m (4593 ft) altitude.

<sup>4</sup>: For between 1400m (4593 ft) to 2800 m (9186 ft) altitude.

<sup>5</sup>: In case of long time, the moving image is recommended to be displayed. If you display a still picture for an extended period, the image retention might remain on the screen. However, image retention can gradually disappear by displaying a moving images.



# EF1/LFE8 Series



Model no.	TH-75EF1U	TH-65EF1U	TH-32EF1U	TH-48LFE8U	TH-43LFE8U	
<b>DISPLAY PANEL</b>						
Screen Size (Diagonal)/Aspect Ratio	74.5-inch (1892 mm)/16:9	64.5-inch (1638 mm)/16:9	31.5-inch (801 mm)/16:9	47.6-inch (1209 mm)/16:9	42.5-inch (1079 mm)/16:9	
Panel Type	IPS Panel/E-LED	VA Panel/D-LED	IPS Panel/D-LED	VA Panel/D-LED	VA Panel/D-LED	
Effective Display Area (W x H)	1649 x 927 mm (65.0" x 36.5")	1428 x 803 mm (56.2" x 31.6")	698 x 392 mm (27.4" x 15.4")	1054 x 592 mm (41.5" x 23.3")	940 x 529 mm (37.0" x 20.8")	
Resolution (H x V)	1920 x 1080	1920 x 1080	1920 x 1080	1920 x 1080	1920 x 1080	
Brightness (Typ)	410 cd/m <sup>2</sup>	350 cd/m <sup>2</sup>	350 cd/m <sup>2</sup>	350 cd/m <sup>2</sup>	350 cd/m <sup>2</sup>	
Contrast Ratio	1200:1	4000:1	1400:1	4000:1	3000:1	
Response Time	8 ms (G to G)	8 ms (G to G)	8 ms (G to G)	8 ms (G to G)	6.5 ms (G to G)	
Viewing Angle (Horizontal/Vertical)	178°/178° (CR≥10)	178°/178° (CR≥20)	178°/178° (CR≥10)	178°/178° (CR≥20)	178°/178° (CR≥10)	
Panel Surface Treatment	Anti-Glare (Haze 3 %)	Anti-Glare (Haze 2 %)	Anti-Glare (Haze 1 %)	N/A	N/A	
<b>TERMINAL*</b>						
VIDEO In	4-pole Mini Jack (M3) x 1		4-pole Mini Jack (M3) x 1		4-pole Mini Jack (M3) x 1	
Audio In(L/R)	-		-		-	
HDMI In	HDMI TYPE-A Connector x 2 *VIERA LINK is not supported.		HDMI TYPE-A Connector x 2 *VIERA LINK is not supported.		HDMI TYPE-A Connector x 2 *VIERA LINK is not supported.	
Component/RGB In	-		-		-	
Audio In (L/R)	-		-		-	
DVI-D In	DVI-D 24-pin x 1		DVI-D 24-pin x 1		DVI-D 24-pin x 1	
Audio In (L/R)	Stereo Mini Jack (M3) x 1 (Shared with PC In)		Stereo Mini Jack (M3) x 1 (Shared with PC In)		Stereo Mini Jack (M3) x 1 (Shared with PC In)	
PC In	Mini D-sub 15-pin x 1		Mini D-sub 15-pin x 1		Mini D-sub 15-pin x 1	
Audio In (L/R)	Stereo Mini Jack (M3) x 1 (Shared with DVI-D In)		Stereo Mini Jack (M3) x 1 (Shared with DVI-D In)		Stereo Mini Jack (M3) x 1 (Shared with DVI-D In)	
PC Out	-		-		-	
USB**	TYPE A USB Connector DC 5V/1A (USB 3.0 is not supported.)		TYPE A USB Connector DC 5V/1A (USB 3.0 is not supported.)		TYPE A USB Connector 5V DC/1A (USB 3.0 is not supported.)	
Serial In	D-sub 9-pin x 1, RS-232C Compatible		D-sub 9-pin x 1, RS-232C Compatible		D-sub 9-pin x 1, RS-232C Compatible	
DIGITAL LINK	-		-		-	
IR In/Out	Mini Jack (M3) x 1 / x 1		Mini Jack (M3) x 1 / x 1		Mini Jack (M3) x 1 / x 1	
LAN	RJ45 x 1 10BASE-T/100BASE-TX, Compatible with PLink™		RJ45 x 1 10BASE-T/100BASE-TX, Compatible with PLink™		RJ45 x 1 10BASE-T/100BASE-TX, Compatible with PLink™	
Function Slot	-		-		-	
<b>GENERAL</b>						
Power Requirements	110-127 V AC, 50 Hz/60 Hz	110-127 V AC, 50 Hz/60 Hz	110-127 V AC, 50 Hz/60 Hz	110-127 V AC, 50 Hz/60 Hz	110-127 V AC, 50 Hz/60 Hz	
Power Consumption	285 W	175 W	65 W	150 W	135 W	
Power off Condition	Approx. 0.3 W	Approx. 0.3 W	Approx. 0.3 W	Approx. 0.3 W	Approx. 0.3 W	
Stand-by Condition	Approx. 0.5 W	Approx. 0.5 W	Approx. 0.5 W	Approx. 0.5 W	Approx. 0.5 W	
Dimensions (W x H x D)	1681 x 959 x 77 mm (66.2" x 37.8" x 3.02")	1459 x 835 x 82 mm (57.5" x 32.9" x 3.3")	727 x 426 x 64 mm (28.7" x 16.8" x 2.5")	1082 x 624 x 62 mm (42.6" x 24.6" x 2.5")	969 x 560 x 61 mm (38.2" x 22.1" x 2.4")	
Carton Size (W x H x D)	1831 x 1227 x 361 mm (72.1" x 48.3" x 14.3")	1655 x 1078 x 280 mm (65.2" x 42.5" x 11.1")	818 x 547 x 139 mm (32.2" x 21.6" x 5.5")	1192 x 773 x 171 mm (47.0" x 30.5" x 6.8")	1070 x 696 x 159 mm (42.2" x 27.4" x 6.3")	
Bezel Width	L/R/T/B: 14.8 mm (0.58")	L/R/T: 13.9 mm (0.55"), B: 14.9 mm (0.59")	L/R/T: 11.9 mm (0.5"), B: 17.2 mm (0.7")	L/R/T: 11.9 mm (0.5"), B: 14.7 mm (0.58")	L/R/T: 11.9 mm (0.5"), B: 14.9 mm (0.59")	
Weight	Approx. 55.0 kg (121.3 lbs.)	Approx. 24.0 kg (52.9 lbs.)	Approx. 5.3 kg (11.7 lbs.)	Approx. 11.5 kg (25.4 lbs.)	Approx. 8.7 kg (19.2 lbs.)	
Gross Weight	Approx. 84.0 kg (185.2 lbs.)	Approx. 34.0 kg (75.0 lbs.)	Approx. 8.0 kg (17.7 lbs.)	Approx. 17.0 kg (37.5 lbs.)	Approx. 14.0 kg (30.9 lbs.)	
Pitch for Wall-Hanging	VESA compliant 600 x 400 mm (23.6" x 15.8")	VESA compliant 400 x 400 mm (15.8" x 15.8")	VESA compliant 100 x 100 mm (3.9" x 3.9")	VESA Compliant 200 x 200 mm (7.9" x 7.9")	VESA Compliant 200 x 200 mm (7.9" x 7.9")	
Built-in Speaker	20 W [10W + 10 W] (10% THD)	20 W [10W + 10 W] (10% THD)	20 W [10W + 10 W] (10% THD)	20 W [10W + 10 W] (10% THD)	20 W [10W + 10 W] (10% THD)	
External Speaker	-	-	-	-	-	
Orientation	Landscape*2	Landscape/Portrait	Landscape/Portrait	Landscape/Portrait	Landscape/Portrait	
Tilting Angle	0-20 degrees forward with landscape setting*2	0-20 degrees forward with landscape setting*2	0-20 degrees forward with landscape setting*2	0-20 degrees forward with landscape setting*2	0-20 degrees forward with landscape setting*2	
Operating Environment	Temperature: 0 °C to 40 °C (32 °F to 104 °F) <sup>3</sup> / Humidity: 20 % to 80 % (Non Condensation)		Temperature: 0 °C to 40 °C (32 °F to 104 °F) <sup>3</sup> / Humidity: 20 % to 80 % (Non Condensation)		Temperature: 0 °C to 40 °C (32 °F to 104 °F) <sup>3</sup> / Humidity: 20 % to 80 % (Non Condensation)	
Storage Environment	Temperature: -20 °C to 60 °C (-4 °F to 140 °F) <sup>3</sup> / Humidity: 20 % to 80 % (Non Condensation)		Temperature: -20 °C to 60 °C (-4 °F to 140 °F) <sup>3</sup> / Humidity: 20 % to 80 % (Non Condensation)		Temperature: -20 °C to 60 °C (-4 °F to 140 °F) <sup>3</sup> / Humidity: 20 % to 80 % (Non Condensation)	
Operating Time <sup>4</sup>	16 h/day		16 h/day		16 h/day	
<b>OPTIONS</b>						
Pedestal	-	-	TY-ST32PE1	-	TY-ST32PE1	
Early Warning Software <sup>5</sup>	ET-SWA100 Series	ET-SWA100 Series	ET-SWA100 Series	ET-SWA100 Series	ET-SWA100 Series	

\*1: Due to the terminal block construction, some connection cables and USB memory devices cannot be used. Be sure to check the "CONNECTION TERMINAL" information in the product specification sheet.

For more information about product specifications, please visit: [https://panasonic.net/cns/prodisplays/download/spec\\_manual/](https://panasonic.net/cns/prodisplays/download/spec_manual/)

\*2: Please contact your sales representative with regard to the tilt angle before installation.

\*3: Environmental temperature to use this unit at high altitudes 1400 m (4593 ft) and higher and below 2800 m (9186 ft) above sea level: 0 °C to 35 °C (32 °F to 95 °F).

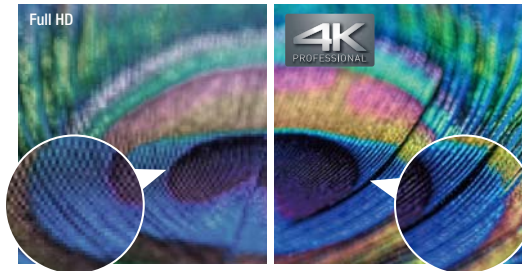
\*4: In case of long time, the moving image is recommended to be displayed. If you display a still picture for an extended period, the image retention might remain on the screen. However, image retention can gradually disappear by displaying a moving images.

\*5: Multi Monitoring & Control Software Ver2.0 or later is required. Suffix of the part number may differ depending on the license type.

**Elaborate 4K Picture Quality down to the Tiniest Details**

SQ1 EQ1 CQ1

With approximately 8,290,000 pixels, about four times the pixels of a Full-HD display, images are highly detailed. This dynamic, large-screen display achieves true-to-life finely nuanced images. With an optimal viewing distance of 1.5 times the screen height, the 4K display renders the information you want to transmit with excellent clarity.



\* Images are simulated.

**Supports HDR and BT.2020 Emulation**

SQ1

The SQ1 Series supports HDR (High Dynamic Range) (PQ and HLG). Image reproduction is stunning, from deepest black to sparkling bright highlights. Additionally, they have emulation mode for BT.2020. This enables an emulation display to support the wide color gamut of the ITU-R BT.2020 standard.

**Supports the Next-Generation Intel® SDM Specification Slot Standard**

SQ1

The SQ1 Series is equipped with the new Intel® SDM specification slot standard that supports 4K signals. Combined with the interface board, you can easily use a built-in PC and add various interfaces.



**High Color Reproduction (6-Axis & 12-Axis Color Correction)**

SQ1 SF2H/SF1H SF2 EQ1  
\*12-Axis compatible

The color space on LCD displays tends to narrow when the luminance level drops, and it's often accompanied by color phase shifts. Six Axis Coordinate Correction applies image processing to balance the six axes of the three primary colors (RGB) and their complementary colors (CMY). Further, in the SQ1 Series, the color temperature, shade, and brightness parameters of individual images can be adjusted for red, green, and blue, and their complementary colors, cyan, magenta, and yellow. This keeps the intermediate shades of extremely fine colors vibrant and lifelike.

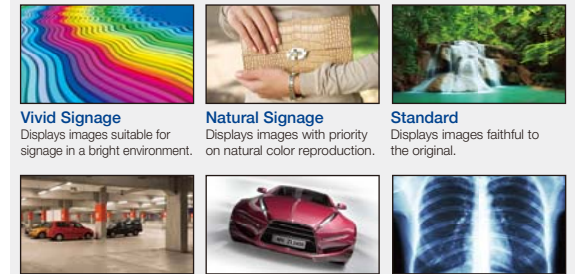


\* Images are simulated.

**Easy Display of Images Optimized for the Display Content**

SQ1 SF2H/SF1H LF80 SF2 AF1 EQ1

Conventional display panels are preset with display modes such as Standard and Dynamic. The SQ1, SF2H/SF1H, LF80, SF2, AF1, and EQ1 Series comes with an extensive display menu to let you select the most suitable mode for the content to be displayed and the viewing environment. You can select the best mode for the video source and the place of display.



**Vivid Signage**  
Displays images suitable for signage in a bright environment.

**Natural Signage**  
Displays images with priority on natural color reproduction.

**Standard**  
Displays images faithful to the original.

**Surveillance**  
Displays images with reduced brightness and with priority on gradation.

**Graphic**  
Suitable for PC input.

**DICOM\***  
Display images close to the DICOM Part 14 Grayscale Standard.

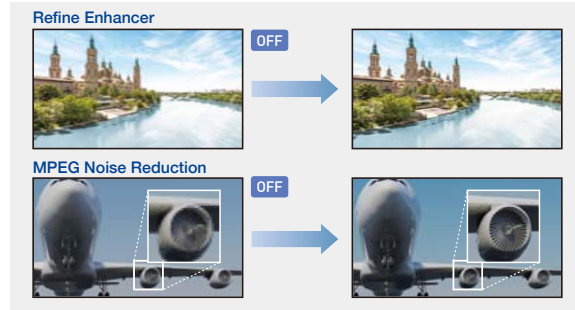
\*Although the term "DICOM" is used, this product is not medical equipment. Do not use displayed images for medical purposes such as examination or diagnosis.

**•Refine Enhancer**

Corrects blurry image contours resulting from resizing, etc., to improve the image resolution.

**•MPEG Noise Reduction**

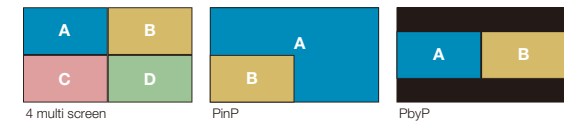
Noise reduction suppresses the block noise and mosquito noise that are characteristic of digital video signals. This faithfully reproduces the inherent beauty of the image.



**Multi Input Screen Capability with No Processor Required**

SQ1

Multi Input Screen Capability with No Processor Required The SQ1 Series can simultaneously display multiple images on a single screen. In addition to 4 multi screens, the SQ1 Series can display 2 screens, such as PinP and PbyP. This is ideal for checking details in various applications, such as videoconferences, digital signage, and surveillance monitoring.



**Brilliant, High-Quality 700 cd/m<sup>2</sup> Images for Bright Lobbies**

SF2H/SF1H LF80

The SF2H/SF1H, and LF80 Series provides highly visible signage even in open spaces with natural lighting. Blending into surrounding spaces, it has an eye-catching effect even when people are moving.



**Portrait Installation Capability**

\* Expect the TH-75EF1, CQ1 Series.

When the Large size display is installed vertically, it can display a person in almost life-size dimensions. It is ideal for digital signage use because it faithfully reproduces the textures and colors of a model's clothing and accessories. It helps to maintain a high-quality brand image. Vertical installation also has no effect on the lifetime of the panel.



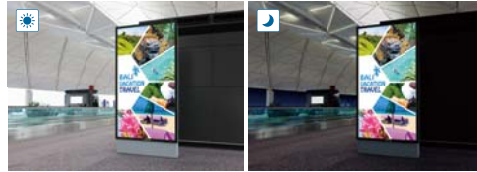
**Efficiency and Reliability for Continuous 24-hour Operation**

SQ1 SF2H/SF1H LF80 SF2 AF1 EQ1

\*The TH-85/75EQ1 only

The use of highly durable panel materials and quality electronic components ensures dependable 24-hour operation seven days a week.

\* Display of moving images is recommended when panels are in use for long periods to prevent image retention. Note that image burn-in can be gradually rectified with the periodical display of moving images.



**A Stylish and slim design Accentuates the Image**

SQ1 EQ1

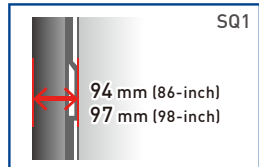
The stylish and slim design complies with the ADA standard (a depth of less than 4-inch (approx. 100 mm) with brackets) in all important aspects. The narrow bezel displays higher-impact images, further enhancing the 4K picture quality. The slim profile isn't the least oppressive even when installed in a hanging configuration.

\* The availability of the TY-WK98PV1 varies depending on the country.



\* ADA stands for the "Americans with Disabilities Act," a United States law made to protect people with disabilities from discrimination.

**Depth at wall installation**



**Fanless Design**

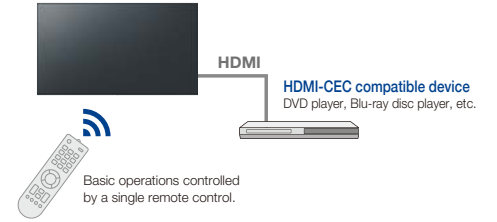
SQ1 SF2H/SF1H LF80 SF2 AF1 EQ1 CQ1 EF1 LFE8

Standard models robust fanless design prevents problems caused by the intake of dusty air. The displays can be safely installed and operated in high-traffic environments.

**HDMI CEC Device Linking Supported**

SQ1 SF2H SF2 EQ1 CQ1

HDMI-CEC compatible devices can be connected to the display by an HDMI cable, enabling the basic operations (such as power ON/OFF) of the compatible devices to be controlled by the display's remote control. Power ON/OFF of the display can also be switched using only the remote control (or main unit buttons) of the HDMI-CEC compatible devices.

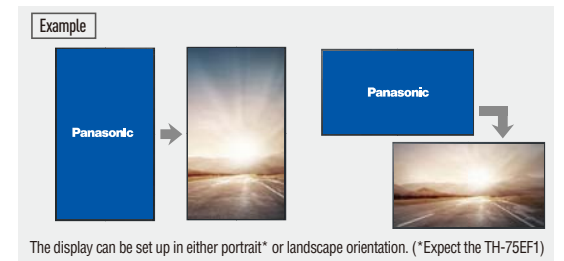


\* The control of all devices cannot be guaranteed.

**Customizable Original Screen**

SQ1 SF2H SF2 EQ1 84/75/65EF1

An original image created by your company or other desired picture can be displayed when the unit is turned on and when there is no input signal. The image data for the original screen can be transferred and stored in the display unit via a USB memory. This function allows a company logo mark, brand image, etc., to be displayed when there is no input signal.

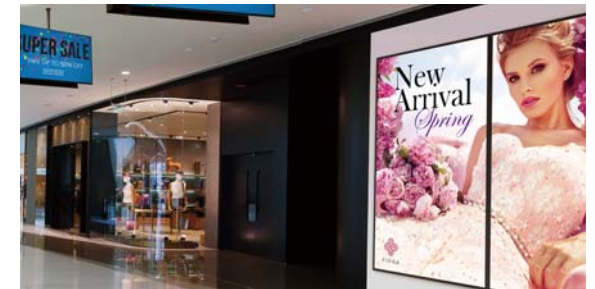


\* Certain limitations apply to the format for original screen.  
\* The SQ1/EQ1 Series is compatible with 3480 x 2160 and 1920 x 1080 resolution.

**4K Daisy Chain can be Constructed with Even Higher Resolution Multi-Screens**

SQ1

The SQ1 Series is equipped with DisplayPort input/output terminals. Construct a multi-screen that can output 4K images by installing multiple units and connecting them in a daisy chain.



**Failover and Failback Safeguards for Mission Critical Situations**

SQ1 SF2H/SF1H LF80 SF2 AF1 EQ1

These models are equipped with a variety of signal input terminals. If the main video and audio signals are interrupted, the system immediately switches to alternative signals. This makes it ideal for mission critical control rooms and surveillance centers. If the main signals are restored, the original image is displayed.



\* The usable combinations of main and backup signals are limited. For details, see the product website.



**Simple Signage Operation with No STB** SQ1 SF2H/SF1H LF80 SF2 EQ1 EF1 LFE8

The display can automatically start showing pictures when a USB memory containing data is inserted. The display unit can be used as digital signage without a set-top box or PC. And the content can be displayed smoothly without including the black screen display. What's more, the order of content playback and playback time can be programmed. Content can also be rewritten and multiple displays can be operated via LAN.\*

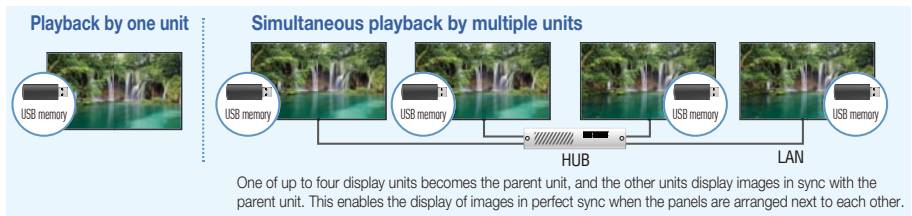


**Applicable format**

Still Image	JPG, JPEG, JPE, BMP*
Motion Image	AVI, MKV, ASF, WMV, TS, MTS, MP4, 3GP, MOV, FLV, F4V

\* BMP is supported only by the 65/75/84EF1, EQ1, SF2 Series.  
\* The SQ1/EQ1 Series is compatible with the 4K signal.

- If it is difficult to insert a USB memory due to installation conditions, use a commercially available extension cable.
- Some files cannot be played back even if they are in the supported format. Regarding restrictions, see the operation manual.
- \* Multi Monitoring & Control Software (free) is required.



**Play USB Content Instantly** SQ1 SF2H SF2 EQ1 CQ1

Playing Full HD video, still images, and digital documents from USB storage devices couldn't be easier. Just insert a thumb drive into the USB port and start presenting without needing to connect a PC. The Memory Viewer app enables image\* (JPEG, BMP) and video\* (WMV, AVI, MOV, MP4, MPG) selection from handy thumbnail previews.



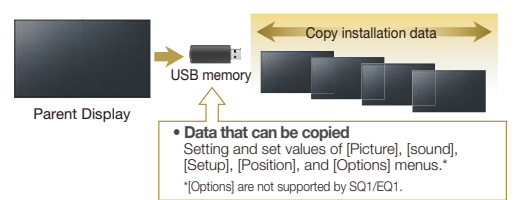
\* In some cases, files may not be viewable even if they are encoded in a supported format.

**Applicable format**

Still Image	JPG, JPEG, JPE, BMP
Motion Image	AVI, MKV, ASF, WMV, GS, MGS, MP4, 3GP, MOV, FLV, F4V

**Cloning Function Speeds Up Multiple Display Setup** SQ1 SF2H/SF1H LF80 SF2 AF1 EQ1 EF1 LFE8

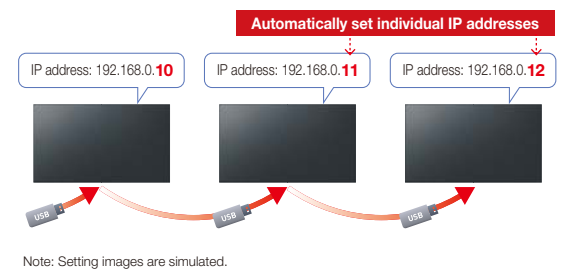
When installing multiple displays, the Cloning function lets you use a USB memory (or LAN network) to copy the settings of a parent display to other units, thus greatly shortening the setup time.



- [Date & Time], [Network Settings], [LAN Settings] and Display ID cannot be copied.
- The Cloning function works only for displays with the same screen size.
- \* Only the SF2 Series can be copied using a LAN network.

**USB Memory Network Settings** SQ1 SF2 EQ1

Using a USB memory device, the network setting can be made for multiple displays. Individual IP addresses for each unit are automatically set.



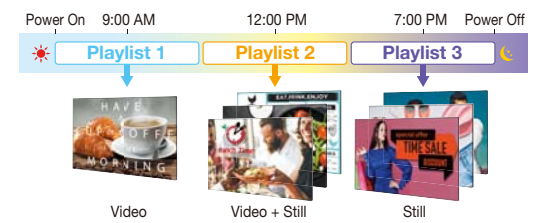
**Make Your Signage Easy with Panasonic Application** SQ1 SF2H/SF1H SF2 EQ1

The SQ1, SF2H/SF1H, SF2, and EQ1 Series features a USB Media Player function that allows easy signage playback. Content Management Software is an application software for scheduling digital signage playback on a computer. It also allows power ON/OFF to be set.

For more information about Content Management Software Version 3.2, please visit:  
<https://panasonic.net/cns/prodisplays/download/software/>

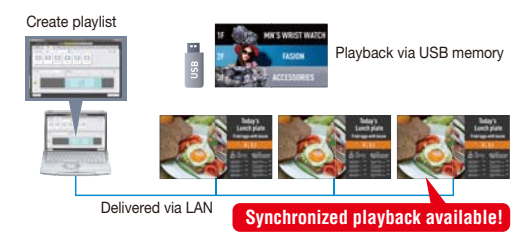
**Play Content Automatically with Scheduling Function**

Content Management Software for PC Version 3.2 (free) enables easy playlist creation with media support including combinations of still and video images. You can set up schedules for playing and closing your media playlist at predetermined dates and times.



**Convenient Playlist and Schedule Syncing**

Playlists and schedules created with Content Management Software can be transferred to displays with USB memory, or via LAN. Synchronized playback on multiple displays is also supported.

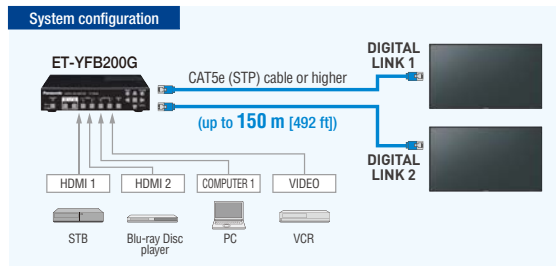


### DIGITAL LINK Function Enables Simple Installation and Low System Costs

SQ1 SF2H LF80

Using DIGITAL LINK makes it possible to transmit video, audio and control signals over a long distance (up to 150 m [492 ft]) with a single LAN cable\*. Easy cabling also reduces labor during setup. This provides transmission of high-quality images and sounds, as well as remote control.

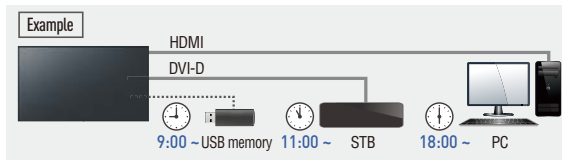
\* When connected with the [Long reach] mode, the maximum transmission distance is 150 m (492 ft). In this case, the unit can receive the signals of up to 1080/60p. A CAT5e (STP) cable or higher is required. This supports 4K video over distances of up to 50 m (164 ft) with a single LAN cable.



### Timer-Programmable Switching of Device Connection

SQ1 SF2H SF2 EQ1 84/75/65EF1

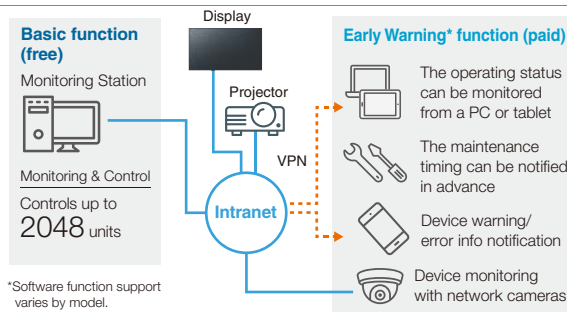
The timer function of the display unit can be used to change connected signal source devices at a desired time. This allows an easy change of displayed content according to the application or the progress of an event.



### Multi Monitoring & Control Software

SQ1 SF2H/SF1H LF80 SF2 AF-1 EQ1 EF1 LFE8

Compatible with Multi Monitoring & Control Software for addition of new functions, such as automatic searching for map displays and registered devices. Displays and peripheral equipment on the intranet can be controlled and their status can be monitored. Also error notification and error indication can be detected by an indication monitoring function (for a fee) for improved maintenance.

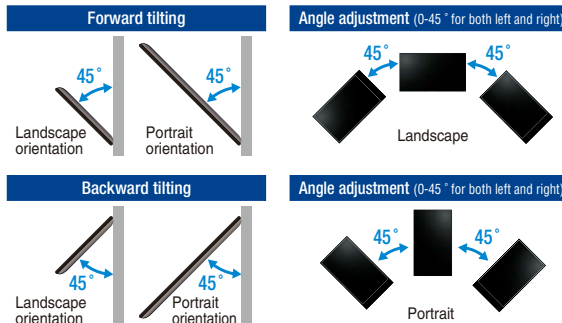


\*Software function support varies by model.

### Choose the Installation to Match Your Application

Panasonic displays are designed for use in either portrait or horizontal orientation with no effect on panel color and lifespan, further reducing TCO. A tilt installation up to 45 degrees forward or backward is also possible. The angle can be adjusted for easy viewing when installed in a high location.

\* The installable angle varies depending on the model. For details, see the specifications page for each model. For more information on the specifications page, please visit the download page. ([https://panasonic.net/ons/prodisplays/download/spec\\_manual/](https://panasonic.net/ons/prodisplays/download/spec_manual/))

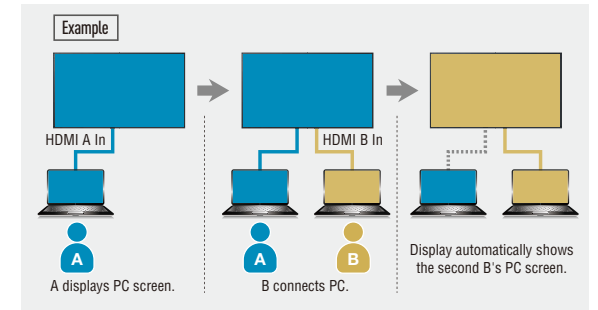


### Smooth Switching of Presenters

SQ1 SF2H SF2 EQ1 84/75/65EF1

These displays automatically switches source signals when the input signal for the current content stops or when an input signal other than the signal of the current content is received. When presenters change during a meeting, the displayed image can be switched easily by simply changing the cable connection, thus eliminating the need to operate the remote control.

\* Only analog (PC input)/digital (HDMI input or DVI-D input) signal switchover is supported. (84/75/65EF1 only)  
 \* The 2 switching inputs must be set in advance.  
 \* This function may not operate correctly depending on the image playback device.  
 \* Digital-digital switching is supported by the SQ/EQ Series. Analog-digital switching is supported by the SF2H/SF2/EF1 Series.



### Built-in Speakers for the Playback of Content with Sound

All models are supported

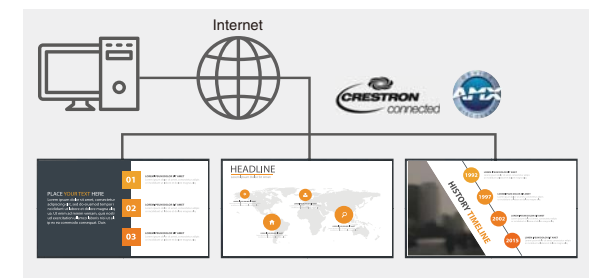
The display unit has built-in speakers so that it can playback content with sound without the connection of external speakers. This allows maximum use of a limited space for the installation of a large-screen display



### Supports LAN Content Connection

SQ1 SF2H/SF1H LF80 SF2 EQ1 CQ1 LFE8

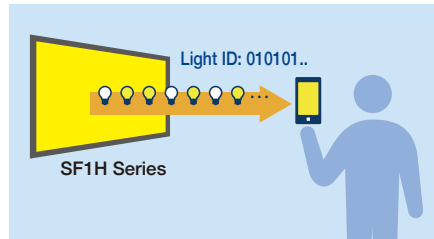
The display can be controlled by LAN or RS-232C. You can configure the display into your existing control system, and can control several devices simultaneously. It also supports AMX or Crestron Connected™ LAN control.



**Built-in Light ID Transmission Function Sends and Receives Information**

An originally developed, high-speed backlight control technology has achieved Light ID transmission from displays by modulating (blinking) light at high speed. The ID signals transmitted from the display are read by a smartphone\* to relay a variety of information, such as traffic guidance or news about shops or products. The displayed content can also be provided in the smartphone owner's native language.

\*The smartphone must satisfy usage conditions, such as the OS version and camera performance. A special application must also be installed.



**Light ID Technology Features**

**Intuitive**  
Simply wave the smartphone toward a signboard or other signage.

**High-Speed Data Receiving**  
Receives the signal within 0.3 seconds.

**Receives Even in Crowds**  
Receives as long as the light reaches.

**Applications for LinkRay**

Panasonic provides a dedicated LinkRay Solution app for iOS/Android™. Users can download to supported smartphones and tablets free.

**Standard Application (Free)**  
**LinkRay Solution**

Download on the App Store | GET IT ON Google Play

**Supported Operating Systems**

- iOS Devices | iOS 8.0 and later
- Android Devices | Android 5.0 and later

Note: Some devices may not operate correctly even if minimum requirements are met. To get the latest information concerning devices tested for compatibility, please visit the Panasonic LinkRay website.

<https://panasonic.net/cns/LinkRay/>

**Feature video**

LinkRay (Introducing the Technology)

LinkRay (Use Cases)

LinkRay Solution@Live & Event Industrial Exhibition

**Usage Case Examples & Benefits**

**Supporting Inbound Travelers in Any Language**

LinkRay enables transportation hubs, such as airports, to improve service levels and reduce stress by delivering customized content in the language native to a visitor's device. This information could range from simple sign and map translation to providing directions with third party mapping apps to supplying information on available services within facilities. Navigating high-stress environments becomes easy for tourists, enhancing their experience.



**Information Delivery that Enhances Value**

Interactive content that enhances exhibits at cultural facilities, such as museums, art galleries, and tourist centers, as well as material supporting retail items, can be provided instantly, deepening understanding or supplying more detailed marketing material on products. This helps to drive sales. LinkRay technology reduces the need for extraneous POS materials, reducing cost and clutter, so items or exhibits can be displayed to maximum effect.



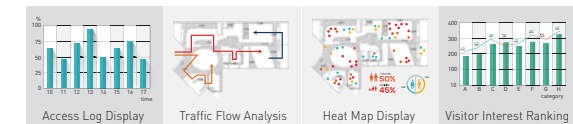
**Increase Buyer Motivation with Augmented Signage**

Presenting detailed product information together with promotional coupons or discount codes instantly within a built-for-purpose app helps to create a sales-positive environment. Tailoring information for individual customers can help increase foot traffic in shops and increase click-throughs to online stores.



**Market Effectively by Visualizing Consumer Intention**

Tools for analyzing the frequency of access to Light ID transmitters yields invaluable information that can be applied in various practical ways, such as adjustment of point-of-sale displays and optimization of shopfloor layouts to achieve desired sales outcomes.





# [ AF1 Series ]

## Evolving with Your Needs

Android™- and HTML5-based OpenPort PLATFORM® Gives Freedom to Customize and Grow with Digital Signage Apps, Simplifies Everyday Use. The AF1 Series incorporates a high-performance SoC (System on a Chip) with a 1 GHz Quad-Core CPU, 1 GB RAM, 8 GB Storage. All this is supported by an alliance with a leading signage software developer to jointly verify application operation.



The Android robot is reproduced or modified from work created and shared by Google and used according to terms described in the Creative Commons 3.0 Attribution License.

## Evolving with Your Needs

Simple, expandable, and reliable, the AF1 Series' Android™-based OpenPort PLATFORM® is powered by a high-performance SoC (System on a Chip) with a 1 GHz quad-core CPU, 1 GB of memory, and 8 GB\* of internal storage. Together with verified apps created by global alliance partners for custom signage and other roles in business, these adaptive displays deliver your message with maximum impact now and in the future.

**QUAD CORE**  
1GHz CPU

**Graphic Processor**

**1 GB Memory**

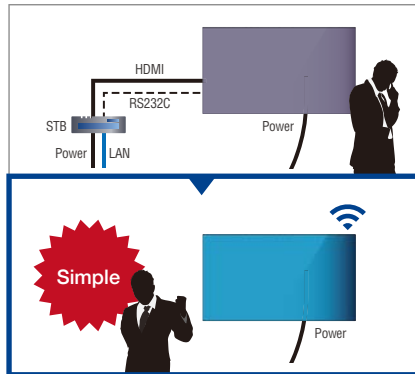
**8 GB\* Storage**

CPU, GPU, and memory are all included in an SoC (System on a Chip).  
\* Total capacity of storage including OS.



## No Need for External Devices and Cables

Thanks to the built-in media player function, external devices such as set-top boxes, PCs, and associated cabling are not required for digital signage applications. Wireless functionality paves the way to simple, stress-free installation while saving you time and money.



## Panasonic Original Home Screen

Initial setup of network and language preferences is easy using the remote controller\* and original Panasonic Home Screen.

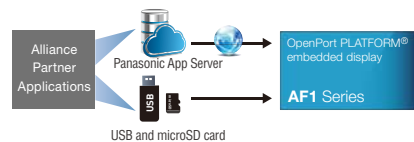
\* Some setting and application operations cannot be performed using the remote control. In this case, use a USB mouse to operate.



## Simple App Installation

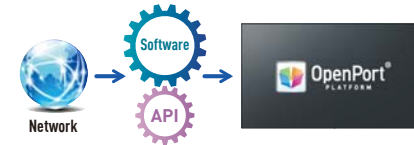
Applications are easily accessed and installed via Panasonic App Server\*, which streamlines settings before operation. App installation is also enabled via USB drive or microSD card.

\* Certain partner apps not supported.



## Panasonic API Expands Application Functions

Panasonic's clear and intuitive API (Application Programming Interface) enables the expansion of application functions, allowing the display to be controlled remotely without need of RS232C or other complicated applications.



## A Reliable, Fully Certified Platform

The OpenPort PLATFORM® based on Android™ is fully certified by Google to assure stable, secure, and reliable operation.

## Mutual Check with App Alliance Partners

Applications running on OpenPort PLATFORM® are thoroughly checked by alliance partners and Panasonic for stable and secure operation.



See our partners:  
<https://panasonic.net/cns/prodisplays/products/af1/#partners>

## Optional Early Warning Software (ET-SWA100 Series)

Optional ET-SWA100 Series\* Early Warning Software monitors the displays and projectors connected to an intranet and informs you when an abnormality is detected or there are symptoms of trouble. With this software installed, a monitoring server can be controlled remotely via tablet or PC.

\* Multi Monitoring & Control Software Ver2.0 or later is required. Part number suffix may differ depending on the license type.

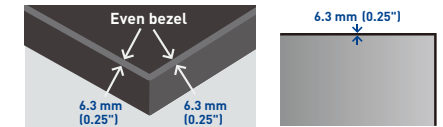
## Make Your Signage Easy with Panasonic Application

AF1 Series displays include a builtin Signage Player Application\* that eliminates need of an external Settop Box (STB). As well as saving space, your signage system becomes smart and simple.

\* OpenPort PLATFORM® Version 2.0 firmware (or later) is required.

## Bright and Stylish IPS Display

The slim-bezel AF1 Series is offered in 42-, 49-, and 55-inch sizes and features an edge-lit LED IPS panel with a high 500 cd/m<sup>2</sup> of brightness. This efficient technology assures uncommonly good off-axis visibility, preserving accurate color reproduction even in bright ambient light. Furthermore, the AF1 Series features a slim 6.3 mm-bezel-width that boosts perceived image size while enhancing any interior design.



## Supports Connection of Peripheral Devices

Peripheral devices such as a mouse, keyboard, or USB camera can be connected to AF1 Series displays to further expand functionality.



Note: Some USB devices are not supported.

## Supports External Memory Devices

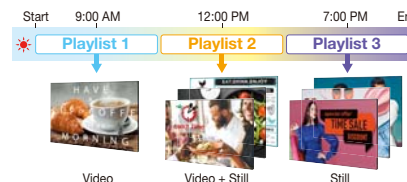
USB drives and microSD cards can also be used to expand the 8 GB internal memory storage capacity.



For more information about Content Management Software Version 1.1, please visit:  
<https://panasonic.net/cns/prodisplays/download/software/>

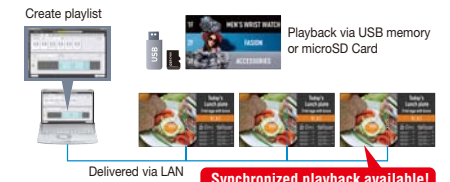
## Play Content Automatically with Scheduling Function

Content Management Software for PC Version 1.1 (free) enables easy playlist creation with media support including combinations of still and video images. You can set up schedules for playing and closing your media playlist at predetermined dates and times.



## Convenient Playlist and Schedule Syncing

Playlists and schedules created with Content Management Software can be transferred to displays with USB memory, microSD Card, or via LAN. Synchronized playback on multiple displays is also supported.



# VF2H/VF1H VF2/LFV Series

Available from December 2019



Available from December 2019



Video Wall



Model no.	TH-55VF2HU	TH-55VF1HU	TH-55VF2U	TH-55LFV70U
<b>DISPLAY PANEL</b>				
Screen size (Diagonal)/Aspect Ratio	54.6-inch (1387 mm)/16:9	54.6-inch (1387 mm)/16:9	54.6-inch (1387 mm)/16:9	54.6-inch (1387 mm)/16:9
Panel Type	IPS/Direct LED	IPS/Direct LED	IPS/Direct LED	IPS/Direct LED
Effective Display Area (W x H)	1209.6 x 680.3 mm (47.62" x 26.78")	1209 x 680 mm (47.6" x 26.7")	1209.6 x 680.3 mm (47.62" x 26.78")	1209 x 680 mm (47.6" x 26.7")
Resolution (H x V)	1920 x 1080	1920 x 1080	1920 x 1080	1920 x 1080
Brightness (Typ.)	700 cd/m <sup>2</sup>	700 cd/m <sup>2</sup>	500 cd/m <sup>2</sup>	700 cd/m <sup>2</sup>
Contrast Ratio	1100:1	1200:1	1100:1	1200:1
Dynamic Contrast Ratio	TBD	500000:1	TBD	500000:1
Response Time	8.0 ms (G to G)	8.0 ms (G to G)	8.0 ms (G to G)	12 ms (G to G)
Viewing Angle (Horizontal/Vertical)	178° / 178° (CR≥10)	178° / 178° (CR≥10)	178° / 178° (CR≥10)	178° / 178° (CR≥10)
Panel Surface Treatment	Anti-Glare (Haze 28 %) (TBD)	Anti-Glare (Haze 44 %) (TBD)	Anti-Glare (Haze 28 %) (TBD)	Anti-Glare (Haze 44 %) (TBD)
<b>TERMINAL</b>				
HDMI In	HDMI Type A Connector x 1		HDMI Type A Connector x 1	
VIDEO In	—	BNC x 1 (Shared with Component In)	—	BNC x 1 (Shared with Component In)
Audio In (L/R)	—	Pin Jack x 1 set (Shared with Component In.)	—	Pin Jack x 1 set (Shared with Component In.)
Component/RGB In	—	BNC x 1 set (Shared with VIDEO In)	—	BNC x 1 set (Shared with VIDEO In)
Audio In (L/R)	—	Pin Jack x 1 set (Shared with VIDEO In)	—	Pin Jack x 1 set (Shared with VIDEO In)
DisplayPort In	DisplayPort x 1 (DP1.1a Dual Mode Only)	DisplayPort x 1 (DP1.1 support, Dual Mode only)	DisplayPort x 1 (DP1.1a Dual Mode Only)	DisplayPort x 1 (DP1.1 support, Dual Mode only)
DisplayPort Out	—	—	—	—
DVI-D In	DVI-D 24-pin x 2 (Female)		DVI-D 24-pin x 2 (Female)	
Audio In (L/R)	Stereo Mini Jack (M3) x 1 (Shared with PC In)		Stereo Mini Jack (M3) x 1 (Shared with PC In)	
DVI-D Out	—		—	
PC In	Mini D-Sub 15-pin x 1 (Female)		Mini D-Sub 15-pin x 1 (Female)	
Audio In (L/R)	Stereo Mini Jack (M3) x 1 (Shared with DVI-D In)		Stereo Mini Jack (M3) x 1 (Shared with DVI-D In)	
DVI-I Out	—		—	
USB	USB Connector (TYPE-A) x 1, DC 5 V/500 mA (USB2.0)	USB Connector (TYPE-A) x 1, DC 5 V/500 mA (USB3.0 is not supported.)	USB Connector (TYPE-A) x 1, DC 5 V/500 mA (USB2.0)	USB Connector (TYPE-A) x 1, DC 5 V/500 mA (Memory Viewer only, USB3.0 is not supported.)
Serial In/Out	D-Sub 9-pin x 1 (Male) / x 1, RS-232C Compatible		D-Sub 9-pin x 1 (Male) / x 1, RS-232C Compatible	
DIGITAL LINK In/DIGITAL LINK Out	RJ45 x 1 / x 1, 100 BASE-TX, Compatible with long reach mode and PLink™ (Shared with LAN)		RJ45 x 1 / x 1, 100 BASE-TX, Compatible with long reach mode and PLink™ (Shared with LAN)	
LAN	RJ45 x 1 / x 1, (100 BASE-TX, Compatible with PLink™) (Shared with DIGITAL LINK)		RJ45 x 1 / x 1, (100 BASE-TX, Compatible with PLink™) (Shared with DIGITAL LINK)	
IR In/Out	Stereo Mini Jack (M3) x 1 / x 1		Stereo Mini Jack (M3) x 1 / x 1	
Audio In	Pin Jack x 1 set	—	Pin Jack x 1 set	—
Audio Out	Stereo Mini Jack (M3) x2, 0.5 V [rms] Variable (-∞ ~ 0 dB) (1 kHz 0 dB Input, 10 kΩ Load)	Stereo Mini Jack (M3) x 1 set	Stereo Mini Jack (M3) x2, 0.5 V [rms] Variable (-∞ ~ 0 dB) (1 kHz 0 dB Input, 10 kΩ Load)	Pin Jack x 1 set
<b>GENERAL</b>				
Power Requirements	110-127 V AC, 50 Hz/60 Hz	110-127 V AC, 50 Hz/60 Hz	110-127 V AC, 50 Hz/60 Hz	110-127 V AC, 50 Hz/60 Hz
Power Consumption	TBD	300 W	TBD	330 W
Stand-by Condition	Approx. 0.5 W	Approx. 0.5 W	Approx. 0.5 W	Approx. 0.5 W
Dimensions (W x H x D)	1210.6 x 681.3 x 97.3 mm (47.66" x 26.82" x 3.83")	1211.4 x 681.2 x 99 mm (47.7" x 26.9" x 3.9")	1210.6 x 681.3 x 97.3 mm (47.66" x 26.82" x 3.83")	1213.4 x 684.2 x 95 mm (47.8" x 27.0" x 3.7")
Carton Size (W x H x D)	TBD	1544 x 973 x 301 mm (60.8" x 38.3" x 11.9")	TBD	1551 x 961 x 450 mm (61.1" x 37.8" x 17.7")
Bezel Width	T/B/L/R: 0.44 mm (0.017")	T/R/L/B: 0.9 mm (0.036")	T/B/L/R: 0.44 mm (0.017")	L/T: 2.25 mm (0.089"), R / B: 1.25 mm (0.049")
Bezel to Bezel <sup>*1</sup>	0.88 mm (0.034") (Multi Screen)	1.8 mm (0.07") (Multi Screen)	0.88 mm (0.034") (Multi Screen)	3.5 mm (0.14") (Multi Screen)
Weight	TBD	Approx. 25.0 kg (55.1 lbs.)	TBD	Approx. 30.0 kg (66.1 lbs.)
Gross Weight	TBD	Approx. 34.0 kg (75.0 lbs.)	TBD	Approx. 45.0 kg (99.2 lbs.)
Pitch for Wall-Hanging	VESA compliant 400 x 400 mm (15.8" x 15.8")			
External Speaker	—	8 Ω, 20 W [10W + 10 W] (10% THD)	—	8 Ω, 20 W [10W + 10 W] (10% THD)
Orientation <sup>*2</sup>	Landscape/Portrait	Landscape/Portrait	Landscape/Portrait	Landscape/Portrait
Tilting Angle <sup>*2</sup>	Vertical Only	Vertical Only	Vertical Only	Vertical Only
Operating Environment	Temperature: 0 °C to 40 °C (32 °F to 104 °F) <sup>3</sup> /0 °C to 35 °C (32 °F to 95 °F) <sup>4</sup> / Humidity: 20% to 80% (No Condensation)	Temperature: 0 °C to 40 °C (32 °F to 104 °F) <sup>3</sup> /0 °C to 35 °C (32 °F to 95 °F) <sup>4</sup> / Humidity: 10% to 90% (Non-Condensation)	Temperature: 0 °C to 40 °C (32 °F to 104 °F) <sup>3</sup> /0 °C to 35 °C (32 °F to 95 °F) <sup>4</sup> / Humidity: 20% to 80% (No Condensation)	Temperature: 0 °C to 40 °C (32 °F to 104 °F) <sup>5</sup> / Humidity: 10% to 90% (Non Condensation)
Storage Environment	TBD	Temperature:-20 °C to 60 °C (-4 °F to 140 °F)/ Humidity: 10% to 90% (Non condensation)	TBD	Temperature:-20 °C to 60 °C (-4 °F to 140 °F)/ Humidity: 10% to 90% (Non condensation)
Operating Time <sup>*6</sup>	24 h/day	24 h/day	24 h/day	24 h/day
<b>OPTIONS</b>				
Cover Frame Kit	—	TY-CF55WV1	—	TY-CF55WV1
Installation Mount	—	TY-VK55LV2	—	TY-VK55LV2
Early Warning Software <sup>*7</sup>	ET-SWA100/105 Series	ET-SWA100 Series	ET-SWA100/105 Series	ET-SWA100 Series
Auto Display Adjustment Upgrade Kit <sup>*8</sup>	TY-VUK10	TY-VUK10	TY-VUK10	TY-VUK10
Multi Window Processor	—	ET-MWP100	—	ET-MWP100

\*1: Bezel-to-Bezel distance means the combined top and bottom (or left and right) bezel width of adjacent displays in multi-screen. The gap between displays is not included. Note a gap of 0.5 mm (0.02") or more is required when installing multiple displays.

\*2: Please contact your sales representative with regard to the tilt angle before installation.

\*3: For up to 1400 m (4593 ft) altitude. \*4: For between 1400m (4593 ft) to 2800 m (9186 ft) altitude. \*5: For up to 2000 m (6562 ft) altitude.

\*6: In case of long time, the moving image is recommended to be displayed. If you display a still picture for an extended period, the image retention might remain on the screen. However, image retention can gradually disappear by displaying a moving images.

\*7: Multi Monitoring & Control Software Ver. 2.1 or later is required. Suffix of the part number may differ depending on the license type.

\*8: Download the latest Video Wall Manager from Global Website in advance. (<https://panasonic.net/cns/prodisplays/download/software/vwm/>)

# LFV Series

Available from October 2019



## Video Wall

Model no.	TH-55LFV9U	TH-55LFV8U		TH-49LFV8U	TH-55LFV6U
<b>DISPLAY PANEL</b>					
Screen size (Diagonal)/Aspect Ratio	54.6-inch (1387.8 mm)	54.6-inch (1387 mm)		48.5-inch (1232 mm)	54.6-inch (1387 mm)
Panel Type	IPS/Direct LED	IPS/Direct LED		IPS/Direct LED	IPS/Direct LED
Effective Display Area (W x H)	1209.6 x 680.4 mm (47.62" x 26.78")	1209 x 680 mm (47.6" x 26.7")		1074 x 604 mm (42.3" x 23.8")	1209 x 680 mm (47.6" x 26.7")
Resolution (H x V)	1920 x 1080	1920 x 1080		1920 x 1080	1920 x 1080
Brightness (Typ.)	500 cd/m <sup>2</sup>	500 cd/m <sup>2</sup>		450 cd/m <sup>2</sup>	500 cd/m <sup>2</sup>
Contrast Ratio	1200:1	1400:1		1300:1	1400:1
Dynamic Contrast Ratio	TBD	500000:1		500000:1	500000:1
Response Time	8.0 ms (G to G)	12 ms (G to G)		8.0 ms (G to G)	12 ms (G to G)
Viewing Angle (Horizontal/Vertical)	178° / 178° (CR≥10)	178° / 178° (CR≥10)		178° / 178° (CR≥10)	178° / 178° (CR≥10)
Panel Surface Treatment	Anti-Glare (Haze 28 %) (TBD)	Anti-Glare (Haze 10 %)		Anti-Glare (Haze 3 %)	Anti-Glare (Haze 10 %)
<b>TERMINAL</b>					
HDMI In	HDMI Type A Connector x 2			HDMI Type A Connector x 2	
VIDEO In	BNC x 1 (Shared with Component In)	BNC x 1 (Shared with Component In)		BNC x 1 (Shared with Component In)	BNC x 1 (Shared with Component/RGB In)
Audio In (L/R)	Pin Jack (L+R) x 1 (Shared with Component In)	Pin Jack x 1 (Shared with Component In)		Pin Jack x 1 (Shared with Component In)	Pin Jack x 1 (Shared with Component/RGB In)
Component/RGB In	BNC x 1 set (Shared with VIDEO In)	BNC x 1 set (Shared with VIDEO In)		BNC x 1 set (Shared with VIDEO In)	BNC x 1 set (Shared with VIDEO In)
Audio In (L/R)	Pin Jack (L+R) x 1 (Shared with Video In)	Pin Jack x 1 (Shared with VIDEO In)		Pin Jack x 1 (Shared with VIDEO In)	Pin Jack x 1 (Shared with VIDEO In)
DisplayPort In	DisplayPort x 1 (DP1.1a / DP1.2)	DisplayPort x 1 (DP1.2 support, HDDP1.3 Compatible)		DisplayPort x 1 (DP1.2 support, HDDP1.3 Compatible)	—
DisplayPort Out	DisplayPort x 1	DisplayPort x 1 (DP1.2 support, HDDP1.3 Compatible)		DisplayPort x 1 (DP1.2 support, HDDP1.3 Compatible)	—
DVI-D In	DVI-D 24-pin x 1 (Female)			DVI-D 24-pin x 1 (Female)	
Audio In (L/R)	Stereo Mini Jack (M3) x 1 (Shared with PC In)	Stereo Mini Jack (M3) x 1 (Shared with PC In)		Stereo Mini Jack (M3) x 1 (Shared with PC In)	
DVI-D Out	—			DVI-D 24-pin x 1 (Female)	
PC In	Mini D-Sub 15-pin x 1 (Female)			Mini D-Sub 15-pin x 1 (Female)	
Audio In (L/R)	Stereo Mini Jack (M3) x 1 (Shared with DVI-D In)	Stereo Mini Jack (M3) x 1 (Shared with DVI-D In)		Stereo Mini Jack (M3) x 1 (Shared with DVI-D In)	
DVI-I Out	DVI-I 29-pin x 1	DVI-I 29-pin x 1 (Female)		DVI-I 29-pin x 1 (Female)	—
USB	USB Connector (TYPE-A) x 1, DC 5V/500mA (USB2.0)	USB Connector (TYPE-A) x 1, DC 5V/500 mA (USB3.0 is not supported.)		USB Connector (TYPE-A) x 1, DC 5V/500 mA (USB3.0 is not supported.)	USB Connector (TYPE-A) x 1, DC 5V/1 A (USB3.0 is not supported.)
Serial In/Out	2.5 mm Phone Jack x 1 / x 1	2.5 mm Stereo Mini Jack x 1 / x 1, RS232C Compatible		2.5 mm Stereo Mini Jack x 1 / x 1, RS232C Compatible	D-sub 9-pin x 1 (Male) / x 1, RS232C Compatible
DIGITAL LINK In/DIGITAL LINK OUT	—			—	
LAN	RJ45 x 1, 10 BASE-T / 100 BASE-TX, Compatible with PLink™	RJ45 x 1 (10 BASE-T/100BASE-TX, Compatible with PLink™)		RJ45 x 1 (10 BASE-T/100BASE-TX, Compatible with PLink™)	RJ45 x 1, 10 BASE-T/100 BASE-TX, Compatible with PLink™
IR In/Out	2.5 mm Phone Jack x 1 / x 1	Stereo Mini Jack (M3) x 1 / x 1		Stereo Mini Jack (M3) x 1 / x 1	
Audio Out	Stereo Mini Jack (M3) x 1 0.5 V [rms] Variable (-∞ - 0 dB) (1 kHz 0 dB Input, 10 kΩ Load)	Stereo Mini Jack (M3) x 1		Stereo Mini Jack (M3) x 1	
<b>GENERAL</b>					
Power Requirements	110-127 V AC, 50 Hz/60 Hz	110-127 V AC, 50 Hz/60 Hz		110-127 V AC, 50 Hz/60 Hz	110-127 V AC, 50 Hz/60 Hz
Power Consumption	185 W	320 W		220 W	210 W
Stand-by Condition	Approx. 0.5 W	Approx. 0.5 W		Approx. 0.5 W	Approx. 0.5 W
Dimensions (W x H x D)	1213.4 x 684.2 x 98.0 mm (47.78" x 26.94" x 3.86")	1213.4 x 684.2 x 95 mm (47.78" x 26.94" x 3.7")		1077.7 x 607.9 x 103.9 mm (42.5" x 24.0" x 4.1")	1213.4 x 684.2 x 95 mm (47.78" x 26.94" x 3.7")
Carton Size (W x H x D)	TBD	1544 x 973 x 301 mm (60.8" x 38.3" x 11.9")		1374 x 901 x 373 mm (54.1" x 35.5" x 14.7")	1544 x 973 x 301 mm (60.8" x 38.3" x 11.9")
Bezel Width	L/T: 2.25mm (0.089"), R/B: 1.25mm (0.049")	L/T: 2.25mm (0.089"), R/B: 1.25mm (0.049")		L/T: 2.25mm (0.089"), R/B: 1.25mm (0.049")	L/T: 2.25mm (0.089"), R/B: 1.25mm (0.049")
Bezel to Bezel*1	3.5 mm (0.14") (Multi Screen)	3.5 mm (0.14") (Multi Screen)		3.5 mm (0.14") (Multi Screen)	3.5 mm (0.14") (Multi Screen)
Weight	27.0 kg (59.5 lbs.)	Approx. 30.0 kg (66.1 lbs.)		Approx. 22.0 kg (48.5 lbs.)	Approx. 30.0 kg (66.1 lbs.)
Gross Weight	TBD	Approx. 39.0 kg (86.0 lbs.)		Approx. 35.0 kg (77.2 lbs.)	Approx. 39.0 kg (86.0 lbs.)
Pitch for Wall-Hanging	VESA compliant 400 x 400 mm (15.8" x 15.8")			VESA compliant 400 x 400 mm (15.8" x 15.8")	
External Speaker	8 Ω, 20 W [10W + 10 W] (10% THD)			8 Ω, 20 W [10W + 10 W] (10% THD)	
Orientation*2	Landscape/Portrait	Landscape/Portrait		Landscape/Portrait	Landscape/Portrait
Tilting Angle*2	Vertical Only	Vertical Only		Vertical Only	Vertical Only
Operating Environment	Temperature: 0 °C to 40 °C (32 °F to 104 °F) <sup>3</sup> /0 °C to 35 °C (32 °F to 95 °F) <sup>4</sup> / Humidity: 20% to 80% (Non condensation)	Temperature: 0 °C to 40 °C (32 °F to 104 °F) <sup>3</sup> / Humidity: 20-90 % (Non condensation)		Temperature: 0 °C to 40 °C (32 °F to 104 °F) <sup>3</sup> / Humidity: 20-90 % (Non condensation)	Temperature: 0 °C to 40 °C (32 °F to 104 °F) <sup>3</sup> /0 °C to 35 °C (32 °F to 95 °F) <sup>4</sup> / Humidity: 10% to 90% (No Condensation)
Storage Environment	Temperature:-20 °C to 60 °C (-4 °F to 140 °F)/ Humidity: 10% to 90 % (Non condensation)	Temperature:-20 °C to 60 °C (-4 °F to 140 °F)/ Humidity: 5% to 95 % (Non condensation)		Temperature:-20 °C to 60 °C (-4 °F to 140 °F)/ Humidity: 5% to 95 % (Non condensation)	Temperature:-20 °C to 60 °C (-4 °F to 140 °F)/ Humidity: 10% to 90 % (Non condensation)
Operating Time*6	24 h/day			24 h/day	
<b>OPTIONS</b>					
Cover Frame Kit	—	TY-CF55VW1		—	—
Installation Mount	—	TY-VK55LV2		TY-VK49LV2	—
Early Warning Software*7	ET-SWA100/105 Series	ET-SWA100 Series		ET-SWA100 Series	ET-SWA100/105 Series
Auto Display Adjustment Upgrade Kit*8	TU-VUK10	TY-VUK10		TY-VUK10	TY-VUK10

\*1: Bezel-to-Bezel distance means the combined top and bottom (or left and right) bezel width of adjacent displays in multi-screen. The gap between displays is not included. Note a gap of 0.5 mm (0.02") or more is required when installing multiple displays.

\*2: Please contact your sales representative with regard to the tilt angle before installation.

\*3: For up to 1400 m (4593 ft) altitude. \*4: For between 1400m (4593 ft) to 2800 m (9186 ft) altitude. \*5: For up to 2000 m (6562 ft) altitude.

\*6: In case of long time, the moving image is recommended to be displayed. If you display a still picture for an extended period, the image retention might remain on the screen. However, image retention can gradually disappear by displaying a moving images.

\*7: Multi Monitoring & Control Software Ver. 2.1 or later is required. Suffix of the part number may differ depending on the license type.

\*8: Download the latest Video Wall Manager from Global Website in advance. (<https://panasonic.net/cns/prodisplays/download/software/vwm>)

### Installation video



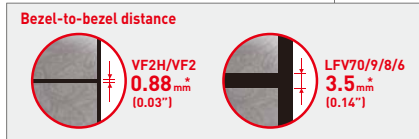
Video Wall Workflow Panasonic TY-VK55LV1



### Narrow Bezel for Seamless Video Walls

VF2H/VF2 VF1H LFBV70 LFBV9 LFBV8 LFBV6

Narrow frames on Panasonic's LCD Video Wall Series reduce bezel-to-bezel distance to a near-invisible 0.88 mm\*. Even when viewed close-up, screen borders are almost indiscernible, resulting in truly spectacular large-format images.



\* TH-55VF2H/55VF2 features 0.88 mm (0.03"), TH-55VF1H features 1.8 mm (0.07"), and TH-55LFBV70/9/8/6 3.5 mm (0.14"), bezel-to-bezel distance. Bezel-to-bezel distance refers to the combined top and bottom (or left and right) bezel-width of adjacent displays in video-wall configuration. The gap between displays is not included. Note that a gap of 0.5 mm or more is required when installing multiple displays.

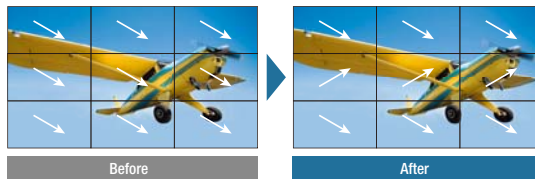
### Improved Multi-Screen Video Visibility

VF2H/VF2 VF1H LFBV6

When high-speed video is played on multiple screens in a video wall, some image misalignment can occur between vertically adjacent panels. VF2H, VF2, VF1H and LFBV6 Series feature a Reverse Scan Function that alternates the scanning direction of vertically adjacent displays to improve image alignment. Frame Control Function, meanwhile, adjusts the number of video frames displayed to reproduce images with natural fluidity.

#### Reverse Scan Function

Reverses direction of image scanning to smoothly play enlarged video on multiple screens

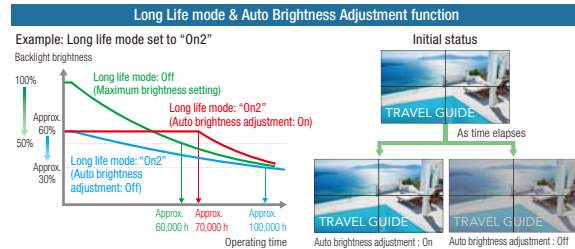


Note: Images are simulated.

### Delivers Stable Brightness for Up to 8 Years\*

VF2H/VF2 VF1H

The VF1H Series incorporates Long Life mode and a new Auto Brightness Adjustment function. In Long Life mode, backlight brightness is optimized to extend product life. Auto Brightness Adjustment function corrects light output automatically according to the rate of backlight deterioration to maintain constant brightness for longer.



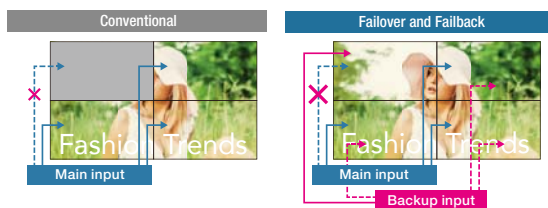
Note: Assuming operating conditions of 25 °C (± 2 °C). Environmental conditions and conditions of usage may affect brightness longevity and operating period. "On2" delivers approximately 60 % maximum specified backlight brightness. Auto brightness adjustment cannot be turned on if panel illumination period has exceeded 1,000 hours. Note: Images and graphs are simulated.

\* Figure is approximate when operating continuously for 24 hours x 365 days.

### Failover and Failback Safeguards Maintain Image Display

VF2H/VF2 VF1H LFBV70 LFBV9 LFBV6

Digital signal inputs comprise one or two DVI-D terminals together with HDMI, DisplayPort, DIGITAL LINK\*, and USB terminals. If primary audio-video signals are interrupted, the display immediately switches to an alternative input. This makes the Panasonic LCD Video Wall Series (except LFBV8) well suited for use in control rooms and in other applications where uninterrupted playback is essential.



If AV signals via the primary input is interrupted, images are no longer displayed.

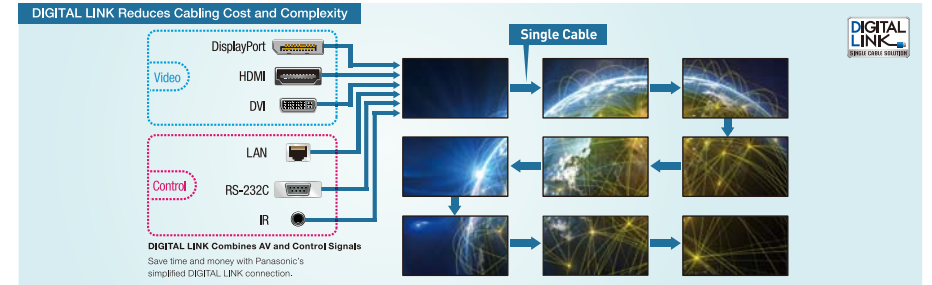
If the primary AV signal is interrupted, the system automatically switches to a backup input so video display is maintained.

Note: Possible combinations of main/backup input signals are limited. For details, please visit the Panasonic website.

### DIGITAL LINK Simplifies Installation at Lower Cost

VF2H/VF2 VF1H LFBV70

Based on HDBaseT™ technology, the DIGITAL LINK connection on VF2H, VF2, VF1H and LFBV70 Series displays supports audio, video, and control signal transmission over long distances, and can also be used to daisy-chain multiple displays via a single cable. This eliminates the need for video splitters and other routing devices. The LFBV9/8/6 Series, meanwhile, supports daisy chain via DVI with separate video and control (serial or IR) connections. Note: CAT5e or higher STP cable required.

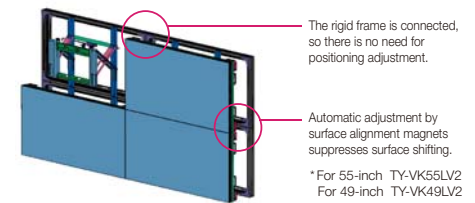


### Installation Frame Simplifies Set-up

VF1H LFBV70 LFBV9 LFBV8 LFBV6

The optional Installation Mount makes it much easier to configure a video wall. There's no need for complicated display positioning, and fluctuations between installers are covered. It also saves time and cuts labor costs.

Video wall fluctuations occur when the bezels are not correctly aligned vertically and horizontally and the surfaces are not properly adjusted. Installation is quick and easy using the rigid frame, with easy adjustment using surface alignment magnets. This structure also makes the displays easier to remove when performing maintenance.



\*Landscape setting only.

\* For 55-inch TY-VK55LV2  
For 49-inch TY-VK49LV2

### Video Wall Manager Software and Auto Display Adjustment Upgrade Kit

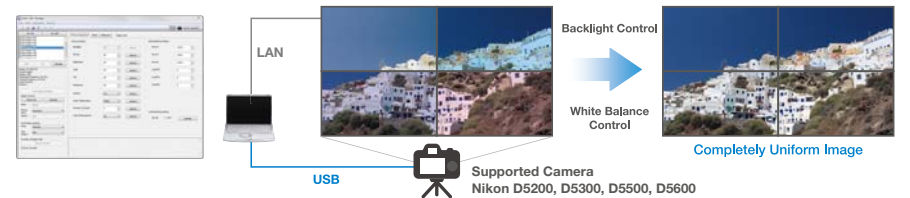
VF2H/VF2 VF1H LFBV70 LFBV9 LFBV8 LFBV6

Panasonic's free Video Wall Manager software can be used with LCD Video Wall Series displays. With this software, you can calibrate display color using a color sensor\*1 (optional), adjust display settings, and control and manage data via PC. If you upgrade this software with an optional TY-VUK10 Auto Camera Adjustment Kit, you can adjust brightness and color among multiple displays automatically using a compatible camera (Nikon D5200/D5300/D5500/D5600)\*2.

\*1 LFBV8 series are not compatible with calibration using a color sensor.

\*2 Available only with normal zoom lens: AF-S DX NIKKOR 18-55 mm f/3.5-5.6G VR, AF-S DX NIKKOR 18-140 mm f/3.5-5.6G ED VR, AF-S DX NIKKOR 18-55 mm f/3.5-5.6G VR II

#### With LFBV70 and TY-VUK10 connected



Auto Display Adjustment Upgrade Kit: <https://panasonic.net/cns/prodisplays/products/ty-vuk10/>

#### Other Features

- Optimized Image Modes (VF1H/LFBV6 Series only)
- High-Performance Imaging Engine (VF1H/LFBV6 Series only)

# BQE1/BFE1 Series



Model no.	TH-75BQE1W	TH-65BFE1W
<b>DISPLAY PANEL</b>		
Screen Size (Diagonal)/Aspect Ratio	74.5-inch (1893 mm)/16:9	64.5-inch (1638 mm)
Panel Type	VA Panel/D-LED	VA Panel/D-LED
Effective Display Area (W x H)	1650 x 928 mm (64.9" x 36.5")	1428 x 803 mm (56.2" x 31.6")
Resolution (H x V)	3840 x 2160	1920 x 1080
Brightness (Typ)	400 cd/m <sup>2</sup>	400 cd/m <sup>2</sup>
Contrast Ratio	4000:1	4000:1
Response Time	8.0 ms (G to G)	8.0 ms (G to G)
Viewing Angle (Horizontal/Vertical)	178°/178° (CR≥10)	178°/178° (CR≥10)
<b>TOUCH PANEL</b>	Infrared Blocking Detection Method	
Detection Method	Up to 10-point multi-touch <sup>2</sup>	
Touch Operation	Windows (7/8.1/10), Mac (OS X 10.10.10.11, macOS Sierra)	
OS		
<b>TERMINAL</b>		
VIDEO In	-	
Audio In (L/R)	-	
HDMI In	HDMI Type A Connector x 2	
Component/RGB In	-	
Audio In (L/R)	-	
DVI-D In	DVI-D 24-pin (Digital) x 1	
Audio In (L/R)	Stereo Mini Jack (M3) x 1 (Shared with PC In)	
PC In	Mini D-Sub 15-pin x1 (Female), Plug & Play (VESA DDC2B)	
Audio In (L/R)	Stereo Mini Jack (M3) x 1 (Shared with DVI-D In)	
Audio Out(L/R)	Stereo Mini Jack (M3) x 1	
PC Out	Mini D-Sub 15-pin x 1	
USB A	USB 2.0 Type A Connector x 1 DV 5 V/1 A (USB 3.0 supported: TH-75BQE1 only)	
USB B	DirectCable USB 2.0 Type A Connector x 1 DV 5 V/ 500 mA (For Touch Panel)	
Serial In	D-Sub 9-pin x 1 for external control, RS-232C Compatible	
IR In	Stereo Mini Jack (3.5 mm) x 1	
DIGITAL LINK	-	
LAN	-	
Function Slot	-	
<b>GENERAL</b>		
Power Requirements	110-127 V AC, 50 Hz/60 Hz	110-127 V AC, 50 Hz/60 Hz
Power Consumption	370 W	205 W
Power Off Condition/Stand-by Condition	Approx. 0 W/Approx. 0.5 W	
Dimensions (W x H x D)	1710 x 1072 x 102 mm (67.3" x 42.2" x 4.0") (with speaker mounted)	1490 x 948 x 106 mm (58.7" x 37.4" x 4.2") (with speaker mounted)
Carton Size (W x H x D)	2010 x 1112 x 250 mm (79.2" x 43.8" x 9.9")	1640 x 1044 x 226 mm (64.6" x 41.2" x 8.9")
Weight	Approx. 66.0 kg (145.5 lbs.) [Approx. 68.0 kg (149.9 lbs.) with speaker mounted]	Approx. 44.0 kg (97.0 lbs.) [Approx. 46.0 kg (101.4 lbs.) with speaker mounted]
Gross Weight	Approx. 81.0 kg (178.6 lbs.)	
Pitch for Wall-Hanging	VESA Compliant 400 x 400 mm (15.8" x 15.8")	
Protective Glass Thickness	Approx. 4 mm (0.16")	
Built-in Speaker	-	
External Speaker	20 W [10 W + 10 W] (10 % THD), W764 x H82 x D59 mm (W30.1" x H3.3" x D2.3")	
Orientation	Landscape/Portrait	
Tilting Angle	Up to 20 degrees backward in landscape orientation	
Operating Environment	Temperature: 0 °C to 40 °C (32 °F to 104 °F) [for up to 1400 m (4593 ft) altitude] / 0 °C to 35 °C (32 °F to 95 °F) [for between 1400 m (4593 ft) and 2800 m (9186 ft) altitude], Humidity: 20 % to 80 % (Non-condensation)	
Storage Environment	Temperature: -20 °C to 60 °C (-4 °F to 140 °F), Humidity: 20 % to 80 % (Non-condensation)	
Operating Time <sup>2</sup>	16 h/day	
Built-in wireless LAN function: Standard	-	
Infrastructure Mode	-	
<b>OPTIONS</b>		
Pedestal	TY-ST75PE9	TY-ST75PE9

\*1: When using Windows®. When using Mac single touch.

\*2: In case running for a long time, the moving image is recommended to be displayed. If you display a still picture for an extended period, the image retention might remain on the screen. However, image retention can gradually disappear by displaying a moving images.

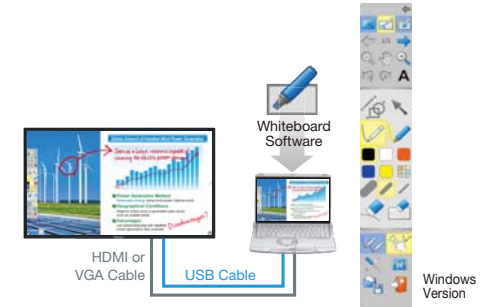
## Touch Screen

### Whiteboard Software for Full Use of Educational Materials

BQE1 BFE1

This software can be used to display educational materials, and to make lessons easier to understand by jotting in notes.

- Presentation Functions\* (Magnifying Glass, Pen/Marker)
- Electronic Pen, Finger-Touch Input
- Screen Capture/Recording Function\*
- Simultaneous Operation of Multiple Points (BF1: Up to 12 points for Windows®, 4 points for Mac BQE/BFE1: Up to 10 points for Windows®, Single Touch for Mac)
- Reading and Writing of JPEG and Other Image Data
- Writing and Saving of PowerPoint® Data\*



\* For the latest software please visit our global website:  
<https://panasonic.net/cns/prodisplays/download/software/>

### Large, Easy-to-See Display Sizes for Classrooms and Conference Rooms

BQE1 BFE1

A large, 65-inch size that is easy to see in classrooms and conference rooms, and an even larger, 75-inch size are available. Select the one that matches the room size. Terminals for PC and HDMI input support highly detailed images (the TH-75BQE1 has 4K resolution) of lesson materials and other data. Even complicated drawings and small text are clear and legible as well.



### Touch-Panel Provides Easy-to-Understand Information

Ideal for use as floor maps and signage to describe products in a showroom.

- Multi-touch input allows several people to write simultaneously.
- Easy-to-hear front speaker (included).
- Can be vertically installed. The speaker can also be mounted in the vertical configuration.
- Complies with VESA standards. Third-party mounting fixtures can be used.



# Panasonic Software Line-up

In order to maximize the use of professional displays, Panasonic offers a variety of software and applications (some free of charge, and others for a fee).

## Content Management Software

Content Management Software makes it possible to create scheduling data and media playlist on a PC and save it to one or more SD Cards. Insert the card into Space Players to execute the schedule. The software reduces complexity for temporary installations or where the device is frequently moved from place to place.



Compatible Display: AF1 Series (Ver.1.1 only), SQ1 Series, SF2 Series, SF2H Series, and EQ1 Series  
<https://panasonic.net/cns/prodisplays/download/software/>

## Whiteboard Software

This simple software is easy to operate. Requiring no PC installation, it can be started and used from external memory. Switching to a convenient, simple menu when using the Remote Pointer is also supported.



Compatible Displays: BQE1 Series, BFE1 Series  
<https://panasonic.net/cns/prodisplays/download/software/#whiteboard>

## Auto Display Adjustment Upgrade Kit (TY-VUK10)

Panasonic's free Video Wall Manager software can be used with LCD Video Wall Series displays. With this software, you can calibrate display color using a color sensor, adjust display settings, and control and manage data via PC. If software is upgraded with an optional TY-VUK10 Auto Display Adjustment Upgrade Kit, brightness and color among multiple displays can be automatically calibrated using a compatible camera (Nikon D5200/D5300/D5500/D5600)\*.



\* Available only with normal zoom lens: AF-S DX NIKKOR 18-55 mm f/3.5-5.6G VR, AF-S DX NIKKOR 18-140 mm f/3.5-5.6G ED VR, AF-S DX NIKKOR 18-55 mm f/3.5-5.6G VR II

For more information, please visit the PASS: <https://panasonic.net/cns/prodisplays/pass/>

## Mobile App (iOS/Android)

### Wireless Projector

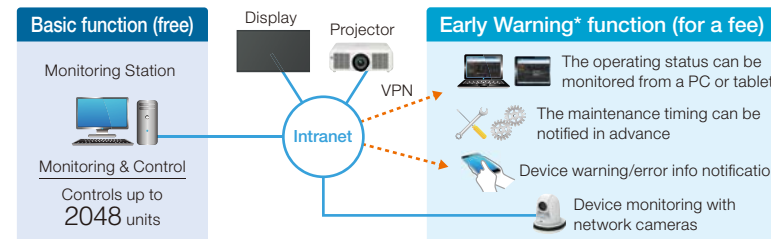
This is an application that lets you send displayed screenshot, document files (PDF, PowerPoint, Excel, Word), and JPEG/PNG images saved to Android devices (tablets and smartphones) to a Panasonic wireless display over a wireless LAN (Wi-Fi), and display them. The application also lets you rotate the screen, enlarge or reduce the screen with a pinch operation, and flip through pages with a flick operation.

   • Dedicated wireless apps for iOS and Android™  
 • Fewer steps to connect  
 • Wide media compatibility and functionality

For more information, please visit the Website:  
<https://panasonic.net/cns/prodisplays/download/software/#wireless>

## Multi Monitoring & Control Software

This free Panasonic software offers monitoring and control of up to 2,048 projectors and professional displays over a LAN network from a single PC to simplify management and maintenance while supporting stable operation. If you also purchase Early Warning Software (ET-SWA100), it will monitor the status of projectors and displays on the intranet and inform you of errors when it detects signs of trouble. This contributes to a lighter maintenance load and reduces costs.



\* Software function support varies by model.  
 \* Multi Monitoring & Control Software Ver. 2.0 or higher is required to use the Early Warning function.

### Features

- **Map Display**  
Image files, such as floor plans, can be loaded, and the icon for each device can be positioned by 'Drag & Drop'.
- **Auto Search of the Devices to Be Registered**  
You can select the devices to be registered from devices automatically searched on the network.<sup>1</sup>
- **Other Features**
  - Monitoring of the status of each device<sup>2</sup>
  - Execution of control commands
  - Scheduling function
  - Delivery of the contents list<sup>3</sup>



## Early Warning Function (ET-SWA100)

**Maintenance Scheduling Suggestion<sup>3</sup>**  
 It is easier to plan for maintenance by predicting the approximate time for maintenance and service based on the usage monitoring.

**Video Stop Detection Using a Network Camera<sup>4</sup>**  
 Images of registered projectors or displays can be monitored regularly by a supported network camera<sup>4</sup>. You can also receive a notification when an abnormality such as a blackout or an image freeze happens.

**If you install 'Multi Monitoring & Control Software,' a free 90-day trial is automatically available.**



<sup>1</sup>: Some devices can't be registered using the auto search function depending on the device status and network environment.  
<sup>2</sup>: Software functionality varies depending on the model. <sup>3</sup>: Function for supported projectors and professional displays only.  
<sup>4</sup>: Panasonic Network camera (BB-S/DG-S/WV-S series), Panasonic PTZ camera (AW-UE70/HE40/HE130 series).

For more information about compatible displays, please visit the Website:  
[https://panasonic.net/cns/prodisplays/download/software/multi/dl\\_files/DeviceList-Multi\\_EN.pdf](https://panasonic.net/cns/prodisplays/download/software/multi/dl_files/DeviceList-Multi_EN.pdf)

**Early Warning function License** \* If you install "Multi Monitoring Control Software", a free 90 day trial.  
 For more information, please visit the PASS: <https://panasonic.net/cns/prodisplays/pass>



# Optional Accessories

		Standard																					
		TH-98SQ1W	TH-86SQ1W	TH-65SQ1W	TH-55SQ1W	TH-49SQ1W	TH-80SF2HU	TH-70SF2HU		TH-55SF1HU	TH-49SF1HU	TH-42SF1HU	TH-55LF80U	TH-49LF80U	TH-42LF80U	TH-65SF2U	TH-55SF2U	TH-49SF2U	TH-43SF2U	TH-55AF1U	TH-49AF1U	TH-42AF1U	
Screen Size (inch)		98	86	65	55	49	80	70		55	49	42	55	49	42	65	55	49	43	55	49	42	
MOUNTING OPTIONS	Pedestal	TY-ST75PE9	-	-	-	-	Yes	Yes		-	-	-	-	-	-	-	Yes	Yes	-	-	-	-	-
		TY-ST55PE9	-	-	Yes	Yes	-	-		-	-	-	-	-	-	-	-	-	-	-	-	-	-
		TY-ST43PE9	-	-	-	-	Yes	-		-	-	-	-	-	-	-	-	-	Yes	Yes	-	-	-
		TY-ST43PE8	-	-	-	-	-	-		Yes	Yes	Yes	Yes	Yes	Yes	-	-	-	-	-	Yes	Yes	Yes
		TY-ST32PE1	-	-	-	-	-	-		-	-	-	-	-	-	-	-	-	-	-	-	-	-
		TY-WK98PV1	Yes	Yes	Yes	-	-	-	-		-	-	-	-	-	-	-	-	-	-	-	-	-
		TY-VK55LV2	-	-	-	-	-	-	-		-	-	-	-	-	-	-	-	-	-	-	-	-
		TY-VK49LV2	-	-	-	-	-	-	-		-	-	-	-	-	-	-	-	-	-	-	-	-
		TY-CF55VW1	-	-	-	-	-	-	-		-	-	-	-	-	-	-	-	-	-	-	-	-
		TY-CF55VW50	-	-	-	-	-	-	-		-	-	-	-	-	-	-	-	-	-	-	-	-
MOUNTING OPTIONS	Pitch for Wall Hanging (VESA compliant models)	800 x 500 (M8)	Yes	-	-	-	-	-	800 x 500 (M8)	-	-	-	-	-	-	-	-	-	-	-	-	-	-
		600 x 500 (M8)	-	-	-	-	-	-	600 x 500 (M8)	-	-	-	-	-	-	-	-	-	-	-	-	-	-
		600 x 400 (M8)	-	Yes	-	-	-	-	600 x 400 (M8)	-	-	-	-	-	-	-	-	-	-	-	-	-	-
		600 x 400 (M6)	-	-	-	-	-	Yes	600 x 400 (M6)	-	-	-	-	-	-	-	-	-	-	-	-	-	-
		400 x 400 (M8)	-	-	-	-	-	-	400 x 400 (M8)	-	-	-	-	-	-	-	-	-	-	-	-	-	-
		400 x 400 (M6)	-	-	Yes	Yes	Yes	-	400 x 400 (M6)	Yes	Yes	-	Yes	Yes	-	Yes	Yes	Yes	Yes	Yes	Yes	Yes	-
		400 x 200 (M6)	-	-	-	-	-	-	400 x 200 (M6)	-	-	-	-	-	-	-	-	-	-	-	-	-	-
		200 x 200 (M6)	-	-	-	-	-	-	200 x 200 (M6)	-	-	Yes	-	-	Yes	-	-	-	-	-	-	-	Yes
OTHERS	DIGITAL LINK Switcher	ET-YFB200G	Yes	Yes	Yes	Yes	Yes	Yes	ET-YFB200G	Yes	Yes	Yes	Yes	Yes	Yes	-	-	-	-	-	-	-	-
	Digital Interface Box	ET-YFB100G	Yes	Yes	Yes	Yes	Yes	Yes	ET-YFB100G	Yes	Yes	Yes	Yes	Yes	Yes	-	-	-	-	-	-	-	-
	Multi Window Processor	ET-MWP100*1	Yes	Yes	Yes	Yes	Yes	Yes	ET-MWP100*1	Yes	Yes	Yes	Yes	Yes	Yes	Yes	Yes	Yes	Yes	Yes	Yes	Yes	Yes

The specification has a case to change without notice.  
 \*1: The availability varies depending on the country.

# Optional Accessories

		Entry										Video Wall								Touch Screen										
		TH-86EQ1W	TH-75EQ1W	TH-65EQ1U	TH-55EQ1U	TH-50EQ1U	TH-43EQ1U	TH-86CQ1U	TH-75CQ1U	TH-65CQ1U	TH-55CQ1U		TH-50CQ1U	TH-43CQ1U	TH-75EF1U	TH-65EF1U	TH-32EF1U	TH-48LFE8U	TH-43LFE8U	TH-55VF2HU	TH-55VF1HU	TH-55VF2U	TH-55LVF70U	TH-55LVF9U	TH-55LVF8U	TH-49LVF8U	TH-55LVF6U	TH-75BQE1W	TH-65BFE1W	
Screen Size (inch)		86	75	65	55	50	43	86	75	65	55		50	43	75	65	32	48	43	55	55	55	55	55	55	49	55	75	65	
MOUNTING OPTIONS	Pedestal	TY-ST75PE9	-	Yes	-	-	-	-	-	-	-	-	-	-	-	-	-	-	-	-	-	-	-	-	-	-	-	Yes	Yes	
		TY-ST55PE9	-	-	Yes	-	-	-	-	-	-	-	-	-	-	-	-	-	-	-	-	-	-	-	-	-	-	-	-	-
		TY-ST43PE9	-	-	-	-	-	-	-	-	-	-	-	-	-	-	-	-	-	-	-	-	-	-	-	-	-	-	-	-
		TY-ST43PE8	-	-	-	Yes	Yes	Yes	-	-	-	-	-	-	-	-	-	Yes	Yes	-	-	-	-	-	-	-	-	-	-	-
		TY-ST32PE1	-	-	-	-	-	-	-	-	-	-	-	-	-	Yes	-	-	-	-	-	-	-	-	-	-	-	-	-	-
		Wall-hanging Bracket	TY-WK98PV1	Yes	Yes	Yes	-	-	-	-	-	-	-	-	-	-	-	-	-	-	-	-	-	-	-	-	-	-	-	-
		Installation Mount	TY-VK55LV2	-	-	-	-	-	-	-	-	-	-	-	-	-	-	-	-	-	-	Yes	-	Yes	Yes	Yes	-	Yes	-	-
		(Landscape setting only)	TY-VK49LV2	-	-	-	-	-	-	-	-	-	-	-	-	-	-	-	-	-	-	-	-	Yes	Yes	Yes	Yes	-	-	-
		Cover Frame Kit for 55"	TY-CF55VW1	-	-	-	-	-	-	-	-	-	-	-	-	-	-	-	-	-	-	Yes	-	-	-	-	-	-	-	-
			TY-CF55VW50	-	-	-	-	-	-	-	-	-	-	-	-	-	-	-	-	-	-	-	-	Yes	Yes	Yes	-	Yes	-	-
MOUNTING OPTIONS	Pitch for Wall Hanging	800 x 500 (M8)	-	-	-	-	-	-	-	-	-	-	-	-	-	-	-	-	-	-	-	-	-	-	-	-	-	-	-	-
	(VESA compliant models)	600 x 500 (M8)	-	-	-	-	-	-	-	-	-	-	-	-	Yes	-	-	-	-	-	-	-	-	-	-	-	-	-	-	-
		600 x 400 (M8)	Yes	-	-	-	-	-	Yes	-	-	-	-	-	-	Yes	-	-	-	-	-	-	-	-	-	-	-	-	-	-
		600 x 400 (M6)	-	Yes	-	-	-	-	-	-	-	-	-	-	-	-	-	-	-	-	-	-	-	-	-	-	-	-	-	-
		400 x 400 (M8)	-	-	-	-	-	-	Yes	-	-	-	-	-	-	-	-	-	-	-	-	-	-	-	-	-	-	-	-	-
		400 x 400 (M6)	-	-	Yes	-	Yes	-	-	-	-	-	-	-	-	-	-	-	-	-	Yes	Yes	Yes	Yes	Yes	Yes	Yes	Yes	Yes	Yes
		200 x 200 (M6)	-	-	-	Yes	-	-	-	-	Yes	Yes	-	-	Yes	-	-	-	-	-	Yes	Yes	Yes	Yes	Yes	Yes	Yes	Yes	Yes	Yes
OTHERS	DIGITAL LINK Switcher	ET-YFB200G	-	-	-	-	-	-	-	-	-	-	-	-	-	-	-	-	-	-	Yes	-	Yes	-	-	-	-	-	-	
	Digital Interface Box	ET-YFB100G	-	-	-	-	-	-	-	-	-	-	-	-	-	-	-	-	-	-	Yes	-	Yes	-	-	-	-	-	-	
	Multi Window Processor	ET-MWP100*1	Yes	Yes	Yes	Yes	Yes	Yes	Yes	Yes	Yes	Yes	Yes	Yes	Yes	Yes	Yes	Yes	Yes	Yes	Yes	Yes	Yes	Yes	Yes	Yes	Yes	Yes	Yes	

The specification has a case to change without notice.  
 \*1: The availability varies depending on the country.

# Features

		Standard																					
		TH-98SQ1W	TH-86SQ1W	TH-65SQ1W	TH-55SQ1W	TH-49SQ1W	TH-80SF2HU	TH-70SF2HU		TH-55SF1HU	TH-49SF1HU	TH-42SF1HU	TH-55LF80U	TH-49LF80U	TH-42LF80U	TH-65SF2U	TH-55SF2U	TH-49SF2U	TH-43SF2U	TH-55AF1U	TH-49AF1U	TH-42AF1U	
Size (inch)		98	86	65	55	49	80	70		55	49	42	55	49	42	65	55	49	43	55	49	42	
SPECIFICATIONS	LinkRay Compatible	-	-	-	-	-	Yes	Yes		Yes	Yes	Yes	-	-	-	-	-	-	-	-	-	-	
	Touch Operation	-	-	-	-	-	-	-		-	-	-	-	-	-	-	-	-	-	-	-	-	
	IP Rating	-	-	-	-	-	-	-		-	-	-	-	-	-	-	-	-	-	-	-	-	
	Operating Time	24	24	24	24	24	24	24	24		24	24	24	24	24	24	24	24	24	24	24	24	24
	DIGITAL LINK	Yes*1	Yes*1	Yes*1	Yes*1	Yes*1	Yes*1	Yes*1	Yes*1		Yes*1	Yes*1	Yes*1	Yes*1	Yes*1	Yes*1	-	-	-	-	-	-	-
	Wireless Function	-	-	-	-	-	-	-	-		-	-	-	-	-	-	-	-	-	-	-	-	-
	Protective Glass	-	-	-	-	-	-	-	-		-	-	-	-	-	-	-	-	-	-	-	-	-
Function Slot				Intel®	SDM																		
INSTALLATION	Portrait	Yes	Yes	Yes	Yes	Yes	Yes	Yes		Yes	Yes	Yes	Yes	Yes	Yes	Yes	Yes	Yes	Yes	Yes	Yes	Yes	
	Multi Screen (Multi Display Setting)*2	Yes	Yes	Yes	Yes	Yes	Yes	Yes		Yes	Yes	Yes	Yes	Yes	Yes	Yes	Yes	Yes	Yes	Yes	Yes	Yes	
	Daisy Chain Connection	Yes	Yes	Yes	Yes	Yes	Yes	Yes		Yes	Yes	Yes	Yes	Yes	Yes	Yes	Yes	Yes	Yes	Yes	Yes	Yes	
	Pre Calibration	-	-	-	-	-	-	-		-	-	-	-	-	-	-	-	-	-	-	-	-	-
	Fan-less Design	Yes	Yes	Yes	Yes	Yes	Yes	Yes	Yes		Yes	Yes	Yes	Yes	Yes	Yes	Yes	Yes	Yes	Yes	Yes	Yes	Yes
FUNCTIONS	Built-in Whiteboard	-	-	-	-	-	-	-		-	-	-	-	-	-	-	-	-	-	-	-	-	
	USB Media Player	Yes	Yes	Yes	Yes	Yes	Yes	Yes		Yes	Yes	Yes	Yes	Yes	Yes	Yes	Yes	Yes	Yes	Yes	Yes	Yes	
	Memory Viewer	Yes	Yes	Yes	Yes	Yes	Yes	Yes		-	-	-	-	-	-	Yes	Yes	Yes	Yes	Yes	-	-	
	Data Cloning																						
	HDMI CEC	Yes	Yes	Yes	Yes	Yes	Yes	Yes		-	-	-	-	-	-	Yes	Yes	Yes	Yes	Yes	-	-	
	Custmized Image Setting	Yes	Yes	Yes	Yes	Yes	Yes	Yes		-	-	-	-	-	-	Yes	Yes	Yes	Yes	Yes	-	-	
	USB Memory Network Setting	Yes	Yes	Yes	Yes	Yes	Yes	Yes		-	-	-	-	-	-	Yes	Yes	Yes	Yes	Yes	-	-	
	Multi Input Display*3	Yes	Yes	Yes	Yes	Yes	Yes	-		-	-	-	-	-	-	-	-	-	-	-	-	-	
	Input Search (No Signal Auto Switch Setting/Input Signal Search)	Yes	Yes	Yes	Yes	Yes	Yes	Yes	Yes		Yes	Yes	Yes	Yes	Yes	Yes	Yes	Yes	Yes	Yes	Yes	Yes	Yes
	Failover/Failback	Yes	Yes	Yes	Yes	Yes	Yes	Yes	Yes		Yes	Yes	Yes	Yes	Yes	Yes	Yes	Yes	Yes	Yes	Yes	Yes	Yes
	1:1Pixel Mode	-	-	-	-	-	Yes	Yes		Yes	Yes	Yes	Yes	Yes	Yes	Yes	Yes	Yes	Yes	Yes	Yes	Yes	Yes
	Color Management																						
	Color Enhancement	Yes	Yes	Yes	Yes	Yes	Yes	Yes	Yes		Yes	Yes	Yes	Yes	Yes	Yes	Yes	Yes	Yes	Yes	Yes	Yes	Yes
	Adaptive Contrast Correction	Yes	Yes	Yes	Yes	Yes	Yes	Yes	Yes		Yes	Yes	Yes	Yes	Yes	Yes	Yes	Yes	Yes	Yes	Yes	Yes	Yes
	Refine Enhancer	Yes	Yes	Yes	Yes	Yes	Yes	Yes	Yes		Yes	Yes	Yes	Yes	Yes	Yes	Yes	Yes	Yes	Yes	Yes	Yes	Yes
	Gradation Smoother	Yes	Yes	Yes	Yes	Yes	Yes	Yes	Yes		Yes	Yes	Yes	Yes	Yes	Yes	Yes	Yes	Yes	Yes	Yes	Yes	Yes
	Frame Creation	Yes	Yes	Yes	Yes	Yes	-	-		-	-	-	-	-	-	Yes	-	-	-	-	-	-	-
	Motion Smoother	-	-	-	-	-	-	-		-	-	-	-	-	-	-	-	-	-	-	-	-	-
	Dynamic Backlight	Yes	Yes	Yes	Yes	Yes	Yes	Yes	Yes		Yes	Yes	Yes	Yes	Yes	Yes	Yes	Yes	Yes	Yes	Yes	Yes	Yes
	Set up Timer	Yes	Yes	Yes	Yes	Yes	Yes	Yes	Yes		Yes	Yes	Yes	Yes	Yes	Yes	Yes	Yes	Yes	Yes	Yes	Yes	Yes
Off Timer Setting	Yes	Yes	Yes	Yes	Yes	Yes	Yes	Yes		Yes	Yes	Yes	Yes	Yes	Yes	Yes	Yes	Yes	Yes	Yes	Yes	Yes	
Power on Screen Delay	Yes	Yes	Yes	Yes	Yes	Yes	Yes	Yes		Yes	Yes	Yes	Yes	Yes	Yes	Yes	Yes	Yes	Yes	Yes	Yes	Yes	
Auto Setup	Yes	Yes	Yes	Yes	Yes	Yes	Yes	Yes		Yes	Yes	Yes	Yes	Yes	Yes	Yes	Yes	Yes	Yes	Yes	Yes	Yes	
No Activity Power Off	Yes	Yes	Yes	Yes	Yes	Yes	Yes	Yes		Yes	Yes	Yes	Yes	Yes	Yes	Yes	Yes	Yes	Yes	Yes	Yes	Yes	
PJ Link Protocol	Yes	Yes	Yes	Yes	Yes	Yes	Yes	Yes		Yes	Yes	Yes	Yes	Yes	Yes	Yes	Yes	Yes	Yes	Yes	Yes	Yes	
LAN Control (Network Control)	Yes	Yes	Yes	Yes	Yes	Yes	Yes	Yes		Yes	Yes	Yes	Yes	Yes	Yes	Yes	Yes	Yes	Yes	Yes	Yes	Yes	
Web Browser Control	Yes	Yes	Yes	Yes	Yes	Yes	Yes	Yes		Yes	Yes	Yes	Yes	Yes	Yes	Yes	Yes	Yes	Yes	Yes	Yes	Yes	
Remote ID Control (Function)	Yes	Yes	Yes	Yes	Yes	Yes	Yes	Yes		Yes	Yes	Yes	Yes	Yes	Yes	Yes	Yes	Yes	Yes	Yes	Yes	Yes	
Serial ID Control (Function)	Yes	Yes	Yes	Yes	Yes	Yes	Yes	Yes		Yes	Yes	Yes	Yes	Yes	Yes	Yes	Yes	Yes	Yes	Yes	Yes	Yes	
Local Dimming	Yes	Yes	Yes	Yes	Yes	-	-		-	-	-	-	-	-	-	-	-	-	-	-	-	-	
ECO Mode/Power Management Mode	Yes	Yes	Yes	Yes	Yes	Yes	Yes	Yes		Yes	Yes	Yes	Yes	Yes	Yes	Yes	Yes	Yes	Yes	Yes	Yes	Yes	
Audio Input Select (Switching)	Yes	Yes	Yes	Yes	Yes	Yes	Yes	Yes		Yes	Yes	Yes	Yes	Yes	Yes	Yes	Yes	Yes	Yes	Yes	Yes	Yes	
SOFTWARE	Multi Monitoring & Control Software Compatible	Yes	Yes	Yes	Yes	Yes	Yes	Yes		Yes	Yes	Yes	Yes	Yes	Yes	Yes	Yes	Yes	Yes	Yes	Yes	Yes	
	Early Warning Software Compatible*4	Yes	Yes	Yes	Yes	Yes	Yes	Yes		Yes	Yes	Yes	Yes	Yes	Yes	Yes	Yes	Yes	Yes	Yes	Yes	Yes	
	Video Wall Manager	Yes	Yes	Yes	Yes	Yes	Yes	Yes		Yes	Yes	Yes	Yes	Yes	Yes	Yes	Yes	Yes	Yes	Yes	Yes	Yes	
	Auto Display Adjustment Upgrade Kit (TY-VUK10)	Yes	Yes	Yes	Yes	Yes	Yes	Yes		Yes	Yes	Yes	Yes	Yes	Yes	Yes	Yes	Yes	Yes	Yes	Yes	Yes	
	Content Management Software	Yes	Yes	Yes	Yes	Yes	Yes	Yes		-	-	-	-	-	-	Yes	Yes	Yes	Yes	Yes	Yes (Ver.1.1)		
CONTROL	Crestron Connected™	Yes	Yes	Yes	Yes	Yes	Yes	Yes		Yes	Yes	Yes	Yes	Yes	Yes	Yes	Yes	Yes	Yes	Yes	Yes	Yes	
	AMX.D.D.	Yes	Yes	Yes	Yes	Yes	Yes	Yes		Yes	Yes	Yes	Yes	Yes	Yes	Yes	Yes	Yes	Yes	Yes	Yes	Yes	
	Extron XTP	Yes	Yes	Yes	Yes	Yes	Yes	Yes		Yes	Yes	Yes	Yes	Yes	Yes	-	-	-	-	Yes	Yes	Yes	

\*1: Long Reach Mode compatible. \*2: The number of units that can be set as a group varies depending on the model. For details, see the Operation Manual of each model.

\*3: There are restrictions on the input signal and 4-Input Multi Display function. For details, see the Operation Manual of each model.

\*4: The part number suffix may differ depending on the license type.

Note: The specifications may vary depending on the model, even for the same function. For details, see the Operation Manual of each model.



# Features

	Entry										Video Wall										Touch Screen										
	TH-86EQ1W	TH-75EQ1W	TH-65EQ1U	TH-55EQ1U	TH-50EQ1U	TH-43EQ1U	TH-86CQ1U	TH-75CQ1U	TH-65CQ1U	TH-55CQ1U	TH-50CQ1U	TH-43CQ1U	TH-75EF1U	TH-65EF1U	TH-32EF1U	TH-48LFE8U	TH-43LFE8U	TH-55VF2HU	TH-55VF1HU	TH-55VF2U	TH-55LFFV70U	TH-55LFFV9U	TH-55LFFV8U	TH-49LFFV8U	TH-55LFFV6U	TH-75BQE1W	TH-65BFE1W				
Size (inch)	86	75	65	55	50	43	86	75	65	55			50	43	75	65	32	48	43	55	55	55	55	55	55	49	55	75	65		
SPECIFICATIONS	LinkRay Compatible	-	-	-	-	-	-	-	-	-	-	-	-	-	-	-	-	-	-	-	-	-	-	-	-	-	-	-			
	Touch Operation	-	-	-	-	-	-	-	-	-	-	-	-	-	-	-	-	-	-	-	-	-	-	-	-	-	Yes	Yes			
	IP Rating	-	-	-	-	-	-	-	-	-	-	-	-	-	-	-	-	-	-	-	-	-	-	-	-	-	-	-	-		
	Operating Time	24	24	18	18	18	18	16	16	16	16			16	16	16	16	16	16	16	24	24	24	24	24	24	24	24	24	16	16
	DIGITAL LINK	-	-	-	-	-	-	-	-	-	-	-	-	-	-	-	-	-	-	-	Yes	Yes	Yes	Yes	-	-	-	-	-		
	Wireless Function	-	-	-	-	-	-	-	-	-	-	-	-	-	-	-	-	-	-	-	-	-	-	-	-	-	-	-	-		
	Protective Glass	-	-	-	-	-	-	-	-	-	-	-	-	-	-	-	-	-	-	-	-	-	-	-	-	-	-	Yes	Yes		
Function Slot	-	-	-	-	-	-	-	-	-	-	-	-	-	-	-	-	-	-	-	-	-	-	-	-	-	-	-	-			
INSTALLATION	Portrait	Yes	Yes	Yes	Yes	Yes	Yes	-	-	-	-	-	-	-	Yes	Yes	Yes	Yes	Yes	Yes	Yes	Yes	Yes	Yes	Yes	Yes	Yes	Yes			
	Multi Screen (Multi Display Setting)*1	Yes	Yes	Yes	Yes	Yes	Yes	-	-	-	-	-	-	Yes	Yes	Yes	Yes	Yes	Yes	Yes	Yes	Yes	Yes	Yes	Yes	Yes	Yes	-			
	Daisy Chain Connection	-	-	Yes (IR only)			-	-	-	-	-	-	-	Yes (IR only)			Yes (IR only)	Yes	Yes	Yes	Yes	Yes	Yes	Yes	Yes	Yes	Yes	-	-		
	Pre Calibration	-	-	-	-	-	-	-	-	-	-	-	-	-	-	-	-	-	-	-	Yes	Yes	Yes	Yes	Yes	Yes	Yes	-	-		
	Fan-less Design	Yes	Yes	Yes	Yes	Yes	Yes	Yes	Yes	Yes	Yes			Yes	Yes	Yes	Yes	Yes	Yes	Yes	Yes	Yes	Yes	Yes	Yes	Yes	Yes	Yes	Yes	Yes	
FUNCTIONS	Built-in Whiteboard	-	-	-	-	-	-	-	-	-	-	-	-	-	-	-	-	-	-	-	-	-	-	-	-	-	-	-			
	USB Media Player	Yes	Yes	Yes	Yes	Yes	Yes	-	-	-	-	-	-	Yes <sup>3</sup>	Yes <sup>3</sup>	Yes <sup>3</sup>	Yes <sup>3</sup>	Yes <sup>3</sup>	Yes	Yes	Yes	Yes	Yes	Yes	Yes	Yes	Yes	-			
	Memory Viewer	Yes	Yes	Yes	Yes	Yes	Yes	Yes	Yes	Yes	Yes			Yes	Yes	-	-	-	-	-	-	-	-	-	-	-	-	-	-		
	Data Cloning	-	-	USB/LAN			-	-	-	-	-	-	-	USB			USB	USB/LAN	USB/LAN	USB/LAN	-	-	-	-	-	-	USB	-	-		
	HDMI CEC	Yes	Yes	Yes	Yes	Yes	Yes	Yes	Yes	Yes	Yes			Yes	Yes	-	-	-	-	-	-	-	-	-	-	-	-	-	-	-	
	Custmized Image Setting	Yes	Yes	Yes	Yes	Yes	Yes	-	-	-	-	-	Yes	Yes	-	-	-	-	-	Yes	Yes	Yes	-	-	-	-	-	-			
	USB Memory Network Setting	Yes	Yes	Yes	Yes	Yes	Yes	-	-	-	-	-	-	-	-	-	-	-	-	Yes	Yes	Yes	-	-	-	-	-	-			
	Multi Input Display*2	-	-	-	-	-	-	-	-	-	-	-	-	-	-	-	-	-	-	-	-	-	-	-	-	-	-	-	-		
	Input Search (No Signal Auto Switch Setting/Input Signal Search)	Yes	Yes	Yes	Yes	Yes	Yes	-	-	-	-	-	-	Yes	Yes	Yes	Yes	Yes	Yes	Yes	Yes	Yes	-	-	-	-	Yes	Yes	Yes		
	Failover/Failback	Yes	Yes	Yes	Yes	Yes	Yes	-	-	-	-	-	-	-	-	-	-	-	-	Yes	Yes	Yes	Yes	Yes <sup>4</sup>	Yes <sup>4</sup>	Yes <sup>4</sup>	Yes	-	-		
	1:1 Pixel Mode	-	-	-	-	-	-	-	-	-	-	-	-	Yes	Yes	Yes	Yes	Yes	Yes	Yes	Yes	Yes	-	-	-	-	Yes	-	-		
	Color Management	-	-	6-axis			-	-	-	-	-	-	-	-	-	-	-	-	-	-	-	-	-	-	-	-	-	-	-		
	Color Enhancement	Yes	Yes	Yes	Yes	Yes	Yes	-	-	-	-	-	-	Yes	Yes	Yes	Yes	Yes	Yes	Yes	Yes	Yes	Yes	Yes	Yes	Yes	Yes	Yes	-		
	Adaptive Contrast Correction	Yes	Yes	Yes	Yes	Yes	Yes	Yes	Yes	Yes	Yes			Yes	Yes	Yes	Yes	Yes	Yes	Yes	Yes	Yes	Yes	Yes	Yes	Yes	Yes	Yes	Yes	-	
	Refine Enhancer	Yes	Yes	Yes	Yes	Yes	Yes	-	-	-	-	-	-	-	-	-	-	-	-	Yes	Yes	Yes	-	-	-	-	Yes	-	-		
	Gradation Smoother	Yes	Yes	Yes	Yes	Yes	Yes	-	-	-	-	-	-	-	-	-	-	-	-	Yes	Yes	-	-	-	-	-	Yes	-	-		
	Frame Creation	Yes	Yes	-	-	-	-	-	-	-	-	-	-	-	-	-	-	-	-	-	-	-	-	-	-	-	-	-	-		
	Motion Smoother	-	-	-	-	-	-	Yes	Yes	Yes	-	-	-	-	-	-	-	-	-	-	-	-	-	-	-	-	-	-	-		
	Dynamic Backlight	Yes	Yes	Yes	Yes	Yes	Yes	Yes	Yes	Yes	Yes			Yes	Yes	-	-	-	-	-	Yes	Yes <sup>5</sup>	Yes	-	-	-	-	-	-	-	
	Set up Timer	Yes	Yes	Yes	Yes	Yes	Yes	-	-	-	-	-	-	Yes	Yes	Yes	Yes	Yes	Yes	Yes	Yes	Yes	Yes	-	-	-	Yes	Yes	Yes		
Off Timer Setting	Yes	Yes	Yes	Yes	Yes	Yes	-	-	-	-	-	-	Yes	Yes	Yes	Yes	Yes	Yes	Yes	Yes	Yes	Yes	Yes	Yes	Yes	Yes	Yes	Yes			
Power on Screen Delay	Yes	Yes	Yes	Yes	Yes	Yes	-	-	-	-	-	-	Yes	Yes	Yes	Yes	Yes	Yes	Yes	Yes	Yes	Yes	Yes	Yes	Yes	Yes	Yes	-			
Auto Setup	Yes	Yes	Yes	Yes	Yes	Yes	Yes	Yes	Yes	Yes			Yes	Yes	Yes	Yes	Yes	Yes	Yes	Yes	Yes	Yes	Yes	Yes	Yes	Yes	Yes	Yes	Yes		
No Activity Power Off	Yes	Yes	Yes	Yes	Yes	Yes	-	-	-	-	-	-	Yes	Yes	Yes	Yes	Yes	Yes	Yes	Yes	Yes	Yes	-	-	-	Yes	Yes	Yes			
PJ Link Protocol	Yes	Yes	Yes	Yes	Yes	Yes	-	-	-	-	-	-	Yes	Yes	Yes	Yes	Yes	Yes	Yes	Yes	Yes	Yes	Yes	Yes	Yes	Yes	Yes	-			
LAN Control (Network Control)	Yes	Yes	Yes	Yes	Yes	Yes	Yes	Yes	Yes	Yes			Yes	Yes	Yes	Yes	Yes	Yes	Yes	Yes	Yes	Yes	Yes	Yes	Yes	Yes	Yes	Yes	-		
Web Browser Control	Yes	Yes	Yes	Yes	Yes	Yes	-	-	-	-	-	-	Yes	Yes	Yes	Yes	Yes	Yes	Yes	Yes	Yes	Yes	-	-	-	Yes	-	-			
Remote ID Control (Function)	Yes	Yes	Yes	Yes	Yes	Yes	-	-	-	-	-	-	Yes	Yes	Yes	Yes	Yes	Yes	Yes	Yes	Yes	Yes	-	-	-	Yes	-	-			
Serial ID Control (Function)	Yes	Yes	Yes	Yes	Yes	Yes	-	-	-	-	-	-	Yes	Yes	Yes	Yes	Yes	Yes	Yes	Yes	Yes	Yes	-	-	-	Yes	-	-			
Local Dimming	Yes	Yes	-	-	-	-	-	-	-	-	-	-	Yes	-	-	-	-	-	-	Yes	Yes	Yes	Yes	Yes	Yes	Yes	Yes	-			
ECO Mode/Power Management Mode	Yes	Yes	Yes	Yes	Yes	Yes	-	-	-	-	-	-	Yes	Yes	Yes	Yes	Yes	Yes	Yes	Yes	Yes	Yes	Yes	Yes	Yes	Yes	Yes	Yes			
Audio Input Select (Switching)	Yes	Yes	Yes	Yes	Yes	Yes	-	-	-	-	-	-	-	-	-	-	-	-	Yes	Yes	Yes	-	-	-	-	Yes	-	-			
SOFTWARE	Multi Monitoring & Control Software Compatible	Yes	Yes	Yes	Yes	Yes	-	-	-	-	-	-	Yes	Yes	Yes	Yes	Yes	Yes	Yes	Yes	Yes	Yes	Yes	Yes	Yes	Yes	Yes	-			
	Early Warning Software Compatible*3	Yes	Yes	Yes	Yes	Yes	Yes	-	-	-	-	-	Yes	Yes	Yes	Yes	Yes	Yes	Yes	Yes	Yes	Yes	Yes	Yes	Yes	Yes	Yes	-			
	Video Wall Manager	Yes	Yes	Yes	Yes	Yes	Yes	-	-	-	-	-	Yes	Yes	Yes	-	-	-	-	Yes	Yes	Yes	Yes	Yes	Yes	Yes	Yes	-			
	Auto Display Adjustment Upgrade Kit (TY-VUK10)	-	-	-	-	-	-	-	-	-	-	-	-	-	-	-	-	-	-	Yes	Yes	Yes	Yes	Yes	Yes	Yes	Yes	-			
Content Management Software	Yes	Yes	Yes	Yes	Yes	Yes	-	-	-	-	-	-	-	-	-	-	-	-	Yes	-	-	-	-	-	-	-	-				
CONTROL	Crestron Connected™	Yes	Yes	Yes	Yes	Yes	-	-	-	-	-	-	Yes	Yes	Yes	Yes	Yes	Yes	Yes	Yes	Yes	Yes	-	-	-	Yes	-	-			
	AMX.D.D.	Yes	Yes	Yes	Yes	Yes	-	-	-	-	-	-	Yes	Yes	Yes	Yes	Yes	Yes	Yes	Yes	Yes	Yes	-	-	-	Yes	-	-			
	Extron XTP	-	-	-	-	-	-	-	-	-	-	-	-	-	-	-	-	-	-	-	-	-	-	-	-	-	-	-			

\*1: The number of units that can be set as a group varies depending on the model. For details, see the Operation Manual of each model.  
 \*2: There are restrictions on the input signal and 4-Input Multi Display function. For details, see the Operation Manual of each model.  
 \*3: The part number suffix may differ depending on the license type.

Note: The specifications may vary depending on the model, even for the same function. For details, see the Operation Manual of each model.