



SHM 22 PF / PM SET

MINIATURE GOOSENECK MICROPHONE

FEATURES

- Cardioid polar pattern
- High gain-before-feedback
- Flat, wide range frequency response
- High-quality reproduction of speech and music
- Flexible gooseneck
- Unobtrusive design
- For fixed mounting

APPLICATIONS

The gooseneck microphones SHM 22 PF/PM Sets are designed for conference table mounting. The SHM 22 PF Set features a 2.4" flexible gooseneck terminating in a 3-pin Switchcraft TQG female connector allowing for flush mounting to a table surface. The SHM 22 PM Set also features a 2.4" gooseneck but terminates in a 3-pin Switchcraft TQG male connector. While the SHM 22 PM Set also allows for flush mounting to the table surface, it requires a 3-pin TQG female receptacle which creates a larger surface footprint than the PF version. This is a function of standard connector design. Both microphones have in-line preamplifiers with male standard XLR outputs. The SHM 22 PF/PM Sets are ideal for corporate conference table, distance learning, and tele/video conferencing. The low profile of the product is preferable to longer goosenecks for aesthetic reasons, while solving the problems created by boundary microphones in situations where a boundary microphone may be accidentally covered.

TECHNICAL SPECIFICATIONS

Transducer type Condenser (Back electret)
 Polar pattern Cardioid
 Frequency response 65 - 20,000 Hz
 Open circuit voltage
 at 1 kHz (0 dB $\hat{=}$ 1 V/Pa) approx. 15 mV/Pa $\hat{=}$ -36.5 dBV
 EIA G_m output -128 dB
 Nominal output impedance 200 Ω
 Load impedance \geq 1000 Ω
 Signal-to-noise-ratio rel. to 1 Pa 60 dB
 Equivalent noise level, A-weighted approx. 26 dB
 Supply voltage 8 - 52 V phantom
 Consumption approx. 3.4 mA
 Output 3-pin XLR terminal, transformer balanced

Germany
 Theresienstr. 8
 74072 Heilbronn
 Tel. (071 31) 6 17-0
 Fax (071 31) 6 04 59
 beyerdynamic@t-online.de
 www.beyerdynamic.de

United States
 56 Central Ave.
 Farmingdale, NY 11735
 Tel. (516) 293-3200
 Fax (516) 293-3288
 salesUSA@beyerdynamic.com
 www.beyerdynamic.com

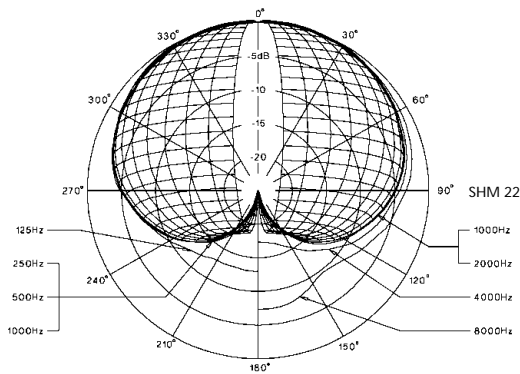
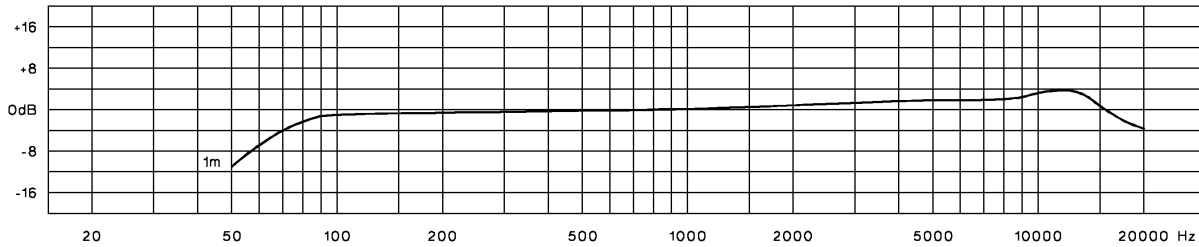
Great Britain
 17 Albert Drive
 Burgess Hill RH15 9TN
 Tel. (01444) 258 258
 Fax (01444) 258 444
 sales@beyerdynamic.co.uk
 www.beyerdynamic.com

France
 7, Rue Labie
 F-75017 Paris
 Tél. 0144.09.93.93
 Fax 0144.09.82.33
 beyer_france@compuserve.com
 www.beyerdynamic.com

FREQUENCY RESPONSE & POLAR PATTERN

This frequency response curve (measuring tolerance ± 2.5 dB) and polar pattern correspond to typical production run specifications for this microphone.

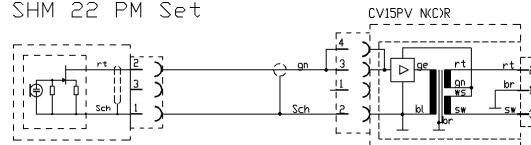
Frequency response curve ± 2.5 dB



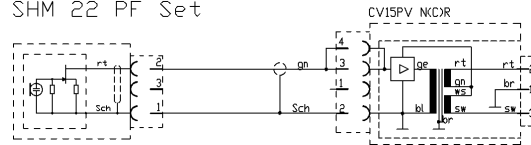
WIRING DIAGRAM

Positive pressure produces positive voltage on red lead (+).

SHM 22 PM Set



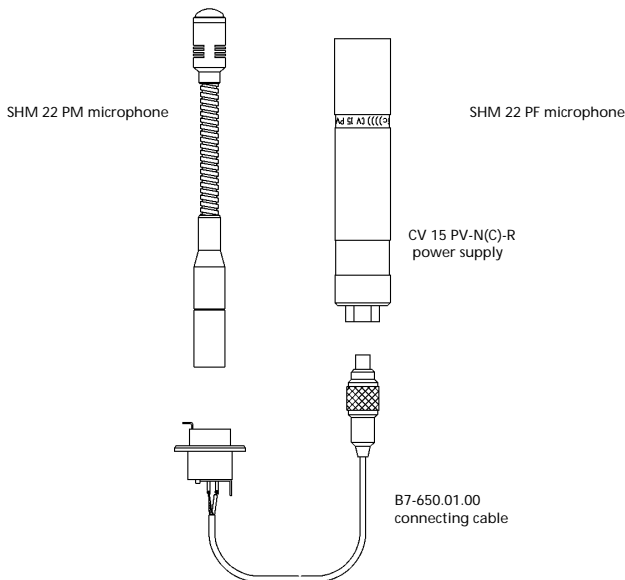
SHM 22 PF Set



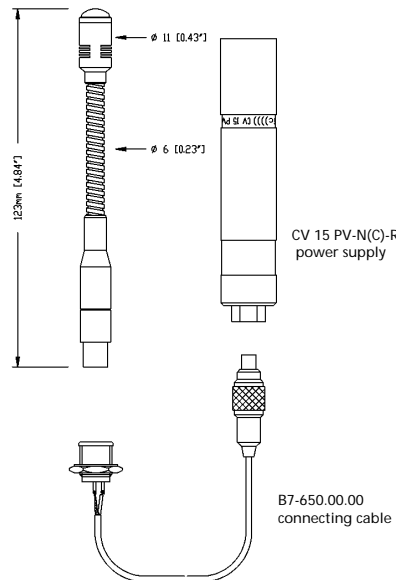
MEASUREMENTS

In millimetres (inches in brackets).

SHM 22 PM Set



SHM 22 PF Set



VERSIONS

- SHM 22 PF Set consisting of SHM 22 PF microphone with 3-pin Switchcraft TQG female connector, CV 15 PV-N(C)-R power supply and B7.650.00.00 connecting cable. . Order # 449.512
- SHM 22 PM Set consisting of SHM 22 PM microphone with 3-pin Switchcraft TQG male connector, CV 15 PV-N(C)-R power supply and B7.650.01.00 connecting cable. . Order # 449.504

Photos are non-contractual. Contents subject to change without notice. Printed in Germany