

DOUG FLEENOR DESIGN

Entry Station Two Ethernet

model: ES2ETHER
technical data sheet



The Entry Station Two Ethernet (ES2ETHER) wall station plays back snapshots of sACN (E1.31) on four universes. The simple front interface allows the user to control 2,048 individual slots with the push of a button. Static snapshots from any sACN capable console record into the ten presets. Snapshot play back may be used as an alternative to a more complex console, or operate along with that same console. Various lockout topologies make the ES2ETHER ideal in venues requiring untrained users to control fixtures typically accessed by a more complex console. The ES2ETHER supports Power over Ethernet (PoE – 802.3af) or a 24-48VDC power input. Station configuration takes place on a rear facing user interface.

Multiple stations may act as remote stations with our Preset 10 Ethernet (model PRE10ETHER-A), and stations operating on different universes may operate on the same Local Area Network (LAN).

SPECIFICATIONS:

Input: E1.31 sACN – 4 Universes – 10/100 Mbps Ethernet
Output: E1.31 sACN – 4 Universes – 10/100 Mbps Ethernet
Connector: RJ45
Indicators: Two Green Illuminated Button Caps
One yellow Fade time LED
One red Signal/Record LED
User Controls: Two Preset Select Buttons
One Recessed Record Button
One Rotary Encoder with Knob
One Graphical LCD Screen
Options Jumpers: All jumpers installed at ship time

Jumper	Installed	Removed
JP4 – Rear Lockout	Rear LCD and Encoder Enabled	Rear LCD and Encoder Disabled
JP5 – Force Defaults	Station Boots with Saved Configuration	Sets Saved Configuration to Default
JP6 – Record Lockout	Front Panel Records Presets Normally	Front Panel Locked out of Recording

Doug Fleenor Design, Inc.

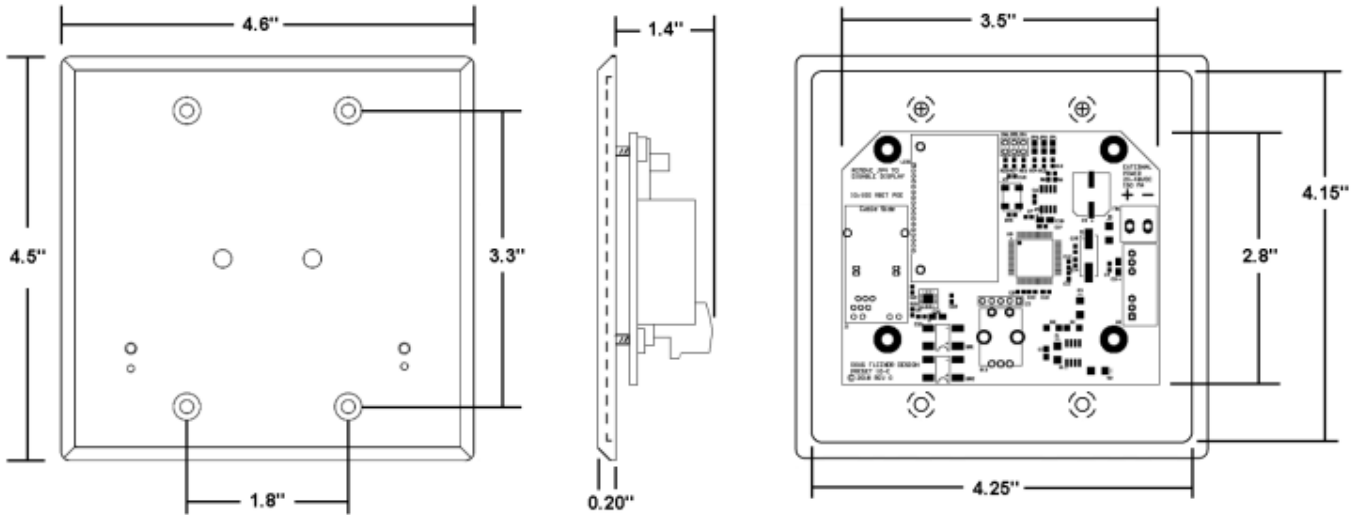
396 Corbett Canyon Road
Arroyo Grande, CA 93420
(805) 481-9599 voice and FAX
(888) 4-DMX512 toll free (888) 436-9512
web site: <http://www.dfd.com>
e-mail: info@dfd.com



DOUG FLEENOR DESIGN

SPECIFICATIONS: (Continued)

Power Input: 802.3af Power over Ethernet or Auxiliary 24-48 VDC 150mA
Color: Black anodized with silver engraved nomenclature
Size: Faceplate: 4.5"H × 0.2"D × 4.6"W
Faceplate rear inset: 4.15"H × 0.1"D × 4.25"W
Electrical box minimum inside dimensions: 2.9"H × 1.4"D × 3.6"W



Limited Manufacturer's Warranty

Products manufactured by Doug Fleenor Design (DFD) carry a five-year parts and labor warranty against manufacturing defects. It is the customer's responsibility to return the product to DFD at the customer's expense. If covered under warranty, DFD will repair the unit and pay for return ground shipping. If a trip is necessary to the customer's site to solve a problem, the expenses of the trip must be paid by the customer.

This warranty covers manufacturing defects. It does not cover damage due to abuse, misuse, negligence, accident, alteration, or repair by other than by Doug Fleenor Design.

Most non-warranty repairs are made for a fixed \$50.00 fee, plus shipping.

Doug Fleenor Design, Inc.

396 Corbett Canyon Road
Arroyo Grande, CA 93420
(805) 481-9599 voice and FAX
(888) 4-DMX512 toll free (888) 436-9512
web site: <http://www.dfd.com>
e-mail: info@dfd.com

