

ALLEN & HEATH



USER GUIDE

Publication AP9694_2

Limited One Year Warranty

This product is warranted to be free from defects in materials or workmanship for period of one year from the date of purchase by the original owner.

To ensure a high level of performance and reliability for which this equipment has been designed and manufactured, read this User Guide before operating. In the event of a failure, notify and return the defective unit to ALLEN & HEATH Limited or its authorised agent as soon as possible for repair under warranty subject to the following conditions

Conditions Of Warranty

The equipment has been installed and operated in accordance with the instructions in this User Guide.

The equipment has not been subject to misuse either intended or accidental, neglect, or alteration other than as described in the User Guide or Service Manual, or approved by ALLEN & HEATH.

Any necessary adjustment, alteration or repair has been carried out by ALLEN & HEATH or its authorised agent.

This warranty does not cover fader wear and tear.

The defective unit is to be returned carriage prepaid to ALLEN & HEATH or its authorised agent with proof of purchase.

Units returned should be packed to avoid transit damage.

In certain territories the terms may vary. Check with your ALLEN & HEATH agent for any additional warranty which may apply.



Xone:KI complies with the European Electromagnetic Compatibility directives 2004/108/EC and the European Low Voltage directives 2006/95/EC.

Any changes or modifications to the equipment not approved by Allen & Heath could void the compliance of the product and therefore the users authority to operate it.

XONE:KI User Guide AP9694 Issue 2

Copyright © 2015 Allen & Heath Limited. All rights reserved

Allen & Heath Limited

Kernick Industrial Estate, Penryn, Cornwall, TR10 9LU, UK

<http://www.allen-heath.com> <http://www.xone.co.uk>

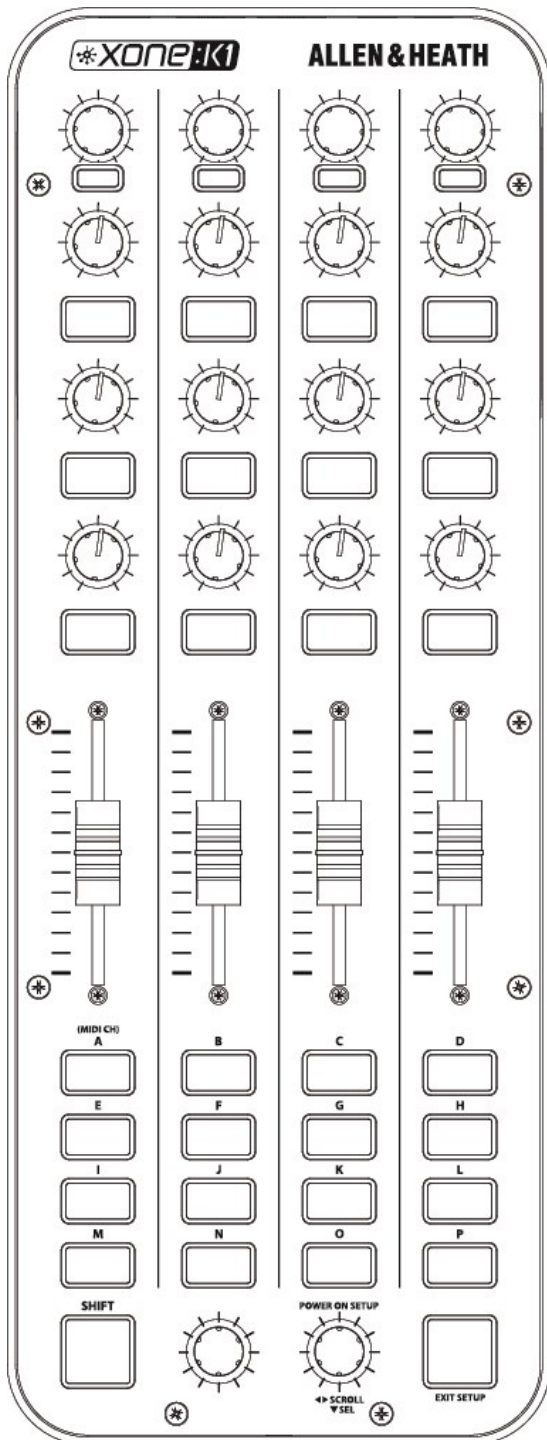
CONTENTS

Congratulations on purchasing the Allen & Heath Xone:KI software controller. To ensure that you get the maximum benefit from the unit please spare a few minutes familiarizing yourself with the controls and setup procedures outlined in this user guide. For further information please refer to the additional information available on our website, or contact our product support team.

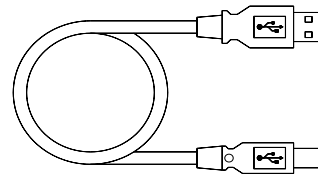
To register your Xone product please visit www.allen-heath.co.uk and, in the 'Support' option, follow the 'Register a Product' link.

Warranty.....	2
Packed Items.....	4
Product Overview.....	5
Connecting Xone:KI Mac/PC.....	6
MIDI Controls.....	8
Rear Panel Connectors.....	9
Application Examples.....	10
MIDI Setup.....	12
MIDI Implementation.....	13
MIDI Note Implementation.....	15
Specifications & Registration Card.	16

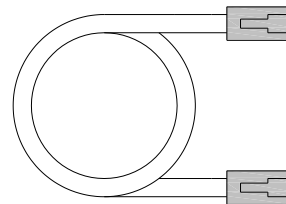
PACKED ITEMS



Xone:KI Software Controller



Type A-B USB Lead
To connect the Xone:KI to your computer.



RJ45 patch lead for connecting to other X:LINK enabled products

PRODUCT OVERVIEW

The XONE:KI is a software controller designed to work with all DAW applications that implement MIDI. As a DJ, producer or music enthusiast the XONE:KI compact controller will expand your creativity.

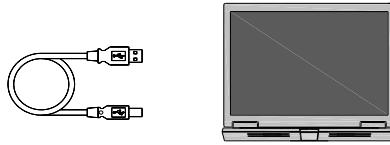
The main features of the Xone:KI are:

- 52 hardware controls
- Back lit switches with individually accessible three - colour LED illumination
- USB Bus Powered
- X:LINK
- Light plastic base with steel front panel
- Flat board construction but still employing A&H 'nuttet pots' construction principle



CONNECTING XONE:KI (MAC)

Connect the XONE:KI to your computer using the supplied type A-B USB Lead.



OS X

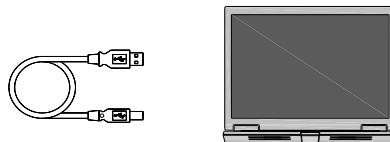
The XONE:KI is class compliant on a Mac (does not require a driver) and connects as a MIDI device.



1. Load "Audio / MIDI Setup" by browsing to: Applications > Utilities > Audio/MIDI Setup. Open Audio/MIDI Setup.
2. Select: Window > Show MIDI Window and confirm "XONE:KI" is listed.

DRIVER INSTALLATION (PC)

Connect the XONE:KI to your computer using the supplied type A-B USB Lead.



Drivers

Whilst the XONE:KI is class compliant on a PC and connects as a MIDI device, in order to utilize multiple Xone:KI devices via the USB connection and in more than one application at a time, you are required to install a dedicated Windows Driver.

The Windows Driver can be downloaded from our website:

www.allen-heath.com/xoneki/drivers

When the driver has downloaded, extract to a folder and click on the setup file to start installation.

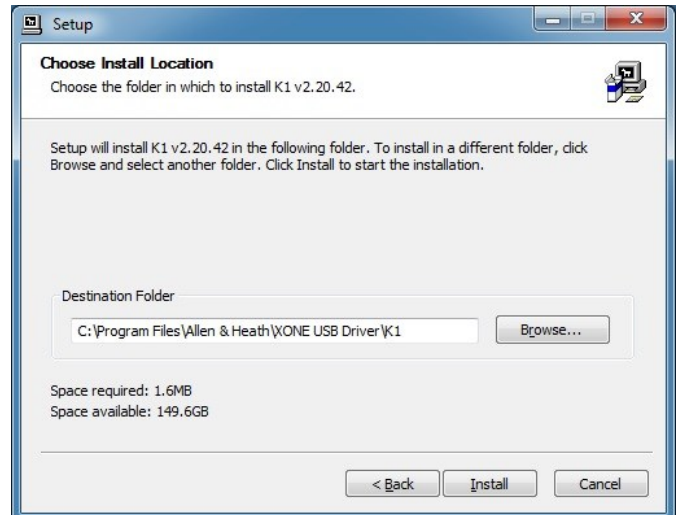
Click Next to continue.



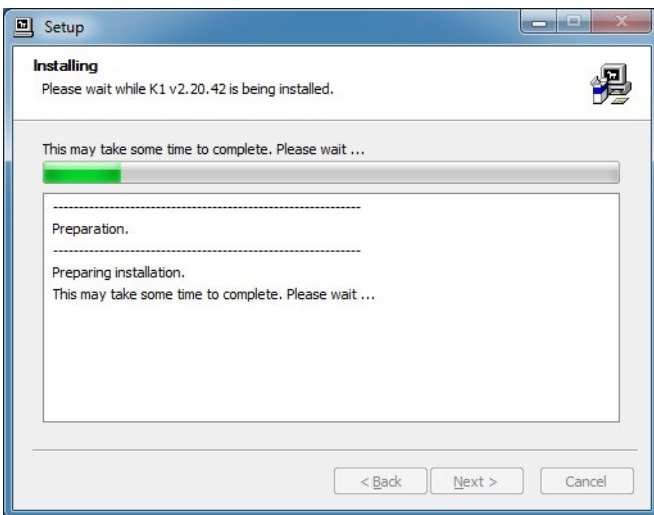
DRIVER INSTALLATION (PC)



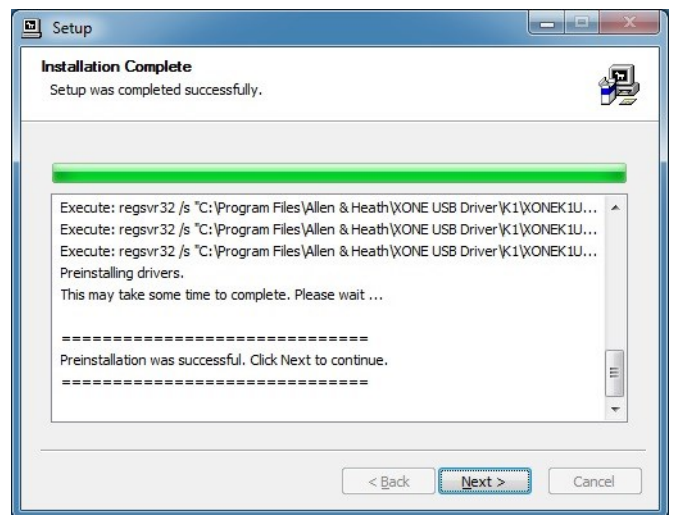
Connect the Xone:K1 via USB to the computer.



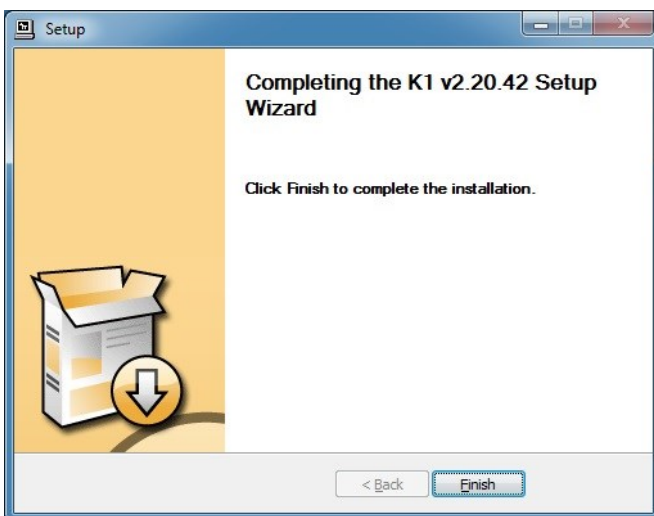
Choose your install location, and select Install.



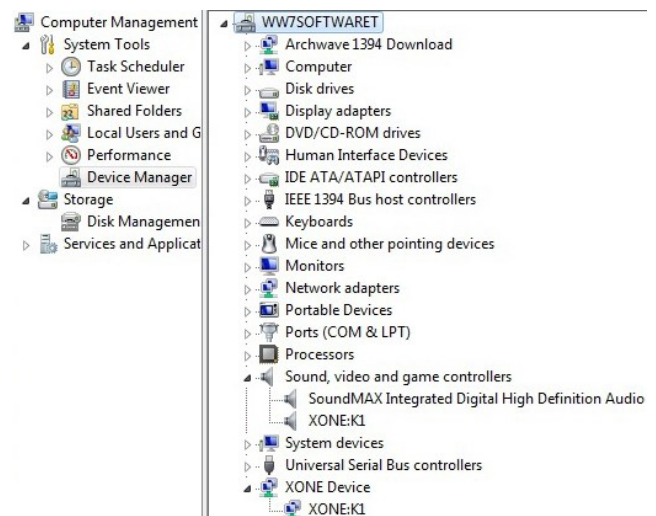
Installation will now start. Do Not unplug your Xone:K1 device.



Once installation is complete, select Next.



Select Finish to complete the installation.

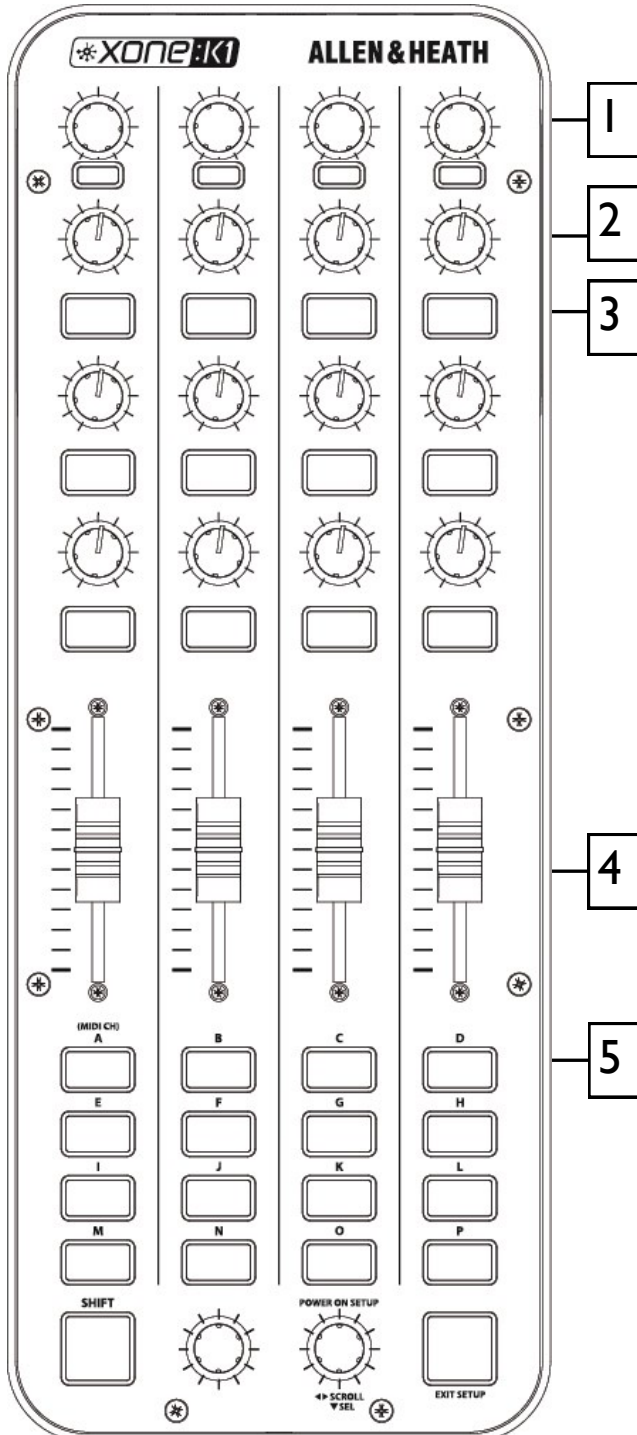


Load "Device Manager" by clicking Start > Control Panel > System > Device Manager.

In the device list expand "Sound, video and game controllers" and confirm "XONE:K1" is listed.

MIDI CONTROLS

The default MIDI Channel for the K1 is Channel 15. To change the MIDI Channel see **Page 12**.



1 Rotary Encoders
Turning an encoder produces MIDI CC (continuous controller) messages with a unique controller number in two's compliment binary encoding (this is relevant to certain DAW applications).

These encoders feature a built in momentary push switch. Pressing down on the encoder knob activates the switch and sends a "Note On" MIDI message, releasing the switch sends a corresponding "Note Off" message.

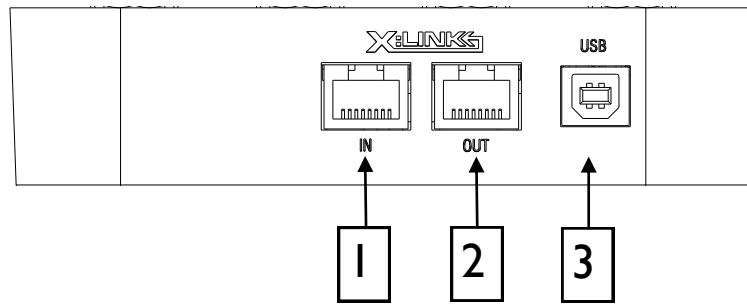
2 Rotary Potentiometers
These controls are standard potentiometers with end stops. Turning a pot from left to right will send MIDI messages with a unique CC number and a control value from 0 to 127.

3 Pot Switches
Each rotary potentiometer has a switch with three-colour illumination below it.

4 Linear Faders
Moving a linear fader will send a MIDI message with a unique CC number and a control value from 0 (bottom) to 127 (top).

5 Switch Matrix
The switch matrix consists of 16 back-lit three-colour switches.

REAR PANEL CONNECTORS



- 1 X:LINK In Socket**
RJ45 socket for proprietary connection to another X:LINK enabled Xone device.
- 2 X:LINK Out Socket**
RJ45 socket for proprietary connection to another X:LINK enabled Xone device.
- 3 USB Connector**
Socket for connecting the Xone:KI to the PC/Mac.

About X:LINK

X:LINK is a proprietary interface protocol to enable Allen & Heath controllers to be easily connected to other X:LINK enabled products.

Do not connect any X:LINK enabled device to any Ethernet enabled devices.

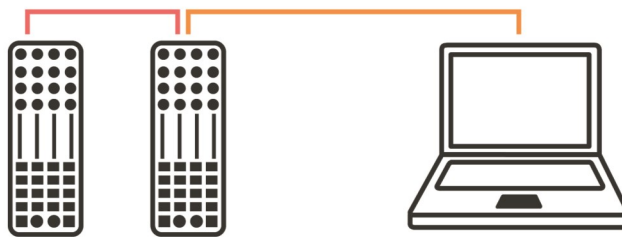
APPLICATION EXAMPLES



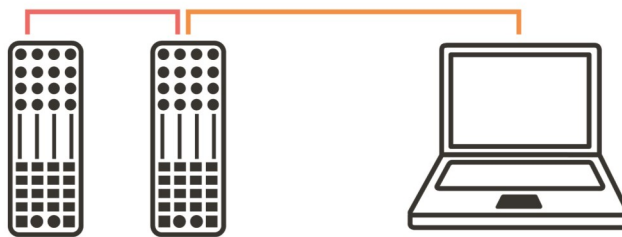
K1 CONTROLLER + LAPTOP via USB



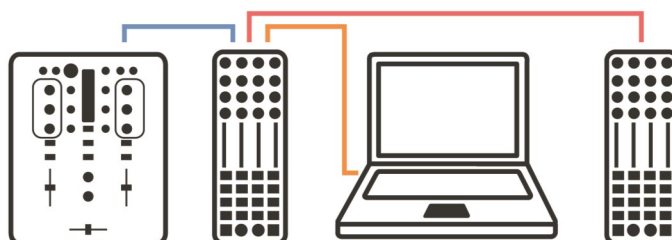
K1 CONTROLLERS via X:LINK + LAPTOP via USB



K1 + K2 CONTROLLERS via X:LINK + LAPTOP via USB

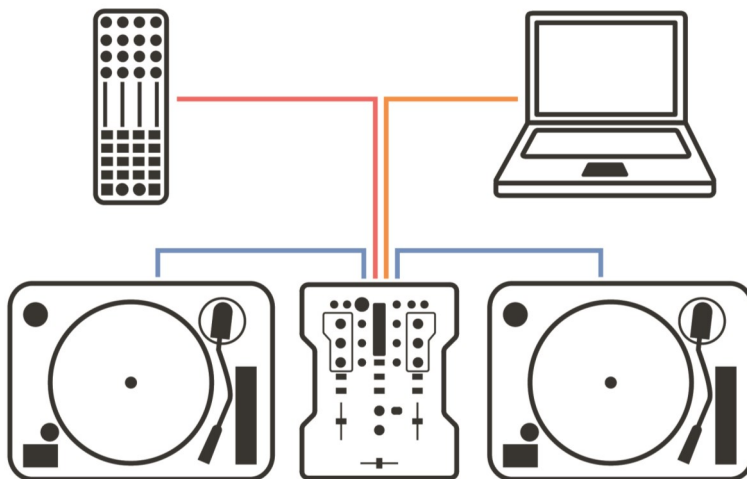


AUDIO MIXER +
K1 + K2 CONTROLLER via X:LINK + LAPTOP via USB

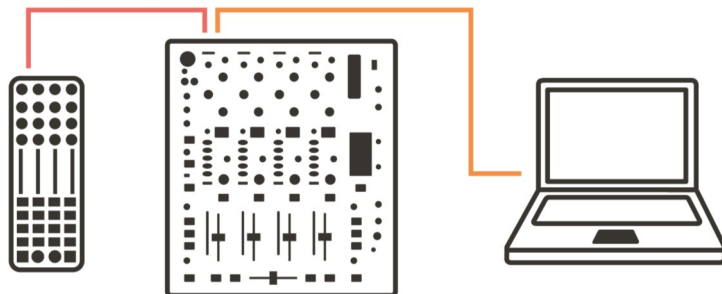


APPLICATION EXAMPLES

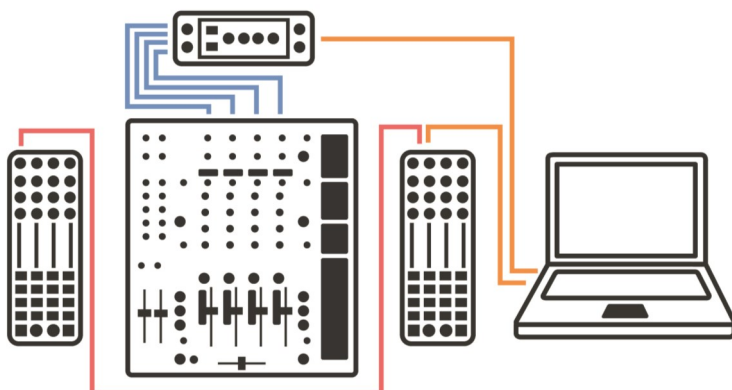
- X:LINK
- USB
- AUDIO



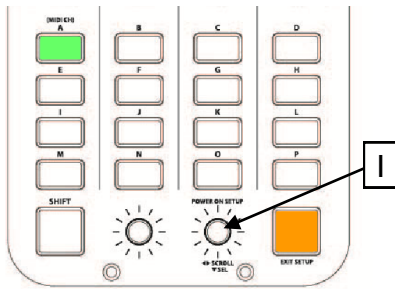
DB4 MIXER + K1 CONTROLLER via X:LINK
+ LAPTOP via USB



XONE:92 + EXTERNAL SOUND CARD +
K1 CONTROLLERS via X:LINK + LAPTOP via USB



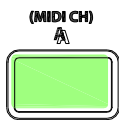
MIDI CHANNEL NUMBER



The default MIDI Channel for the KI is Channel 15.

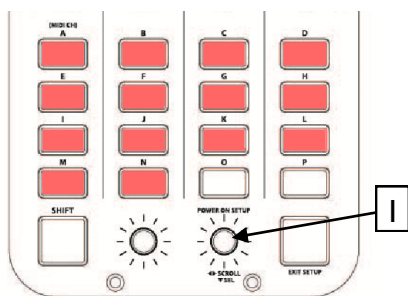
To change the MIDI Channel:

1. Press and hold down the encoder [I], then power up by plugging the USB cable to your PC/Mac.
2. The switch matrix LED's will flash RED three times to indicate that the KI has entered setup mode.



The display will default as above, with Switch 'A' (the MIDI CHANNEL setup option) being illuminated.

Press the setup encoder [I] to display the current MIDI channel number.

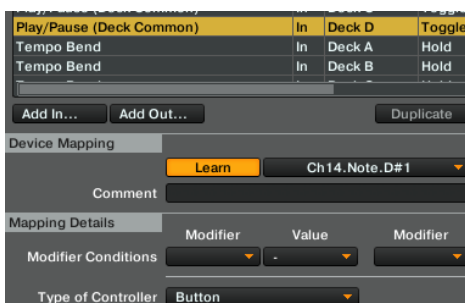


1. The channel number is represented by the number of illuminated switches; in this case MIDI Channel 14.
2. To change the MIDI Channel number, rotate the Setup encoder.
3. Once the desired MIDI Channel Number has been chosen, press the Setup Encoder [I] to store it and return to the setup mode.
4. Press the amber switch to exit setup mode and the switch matrix LED's will flash RED three times.

MIDI MAPPING

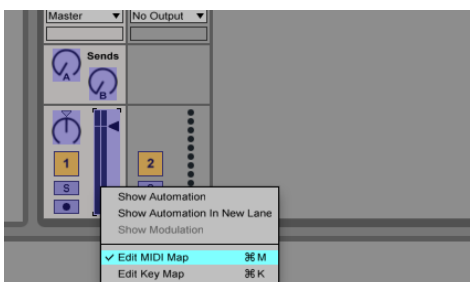
Mapping controls differ from one application to another.

Traktor



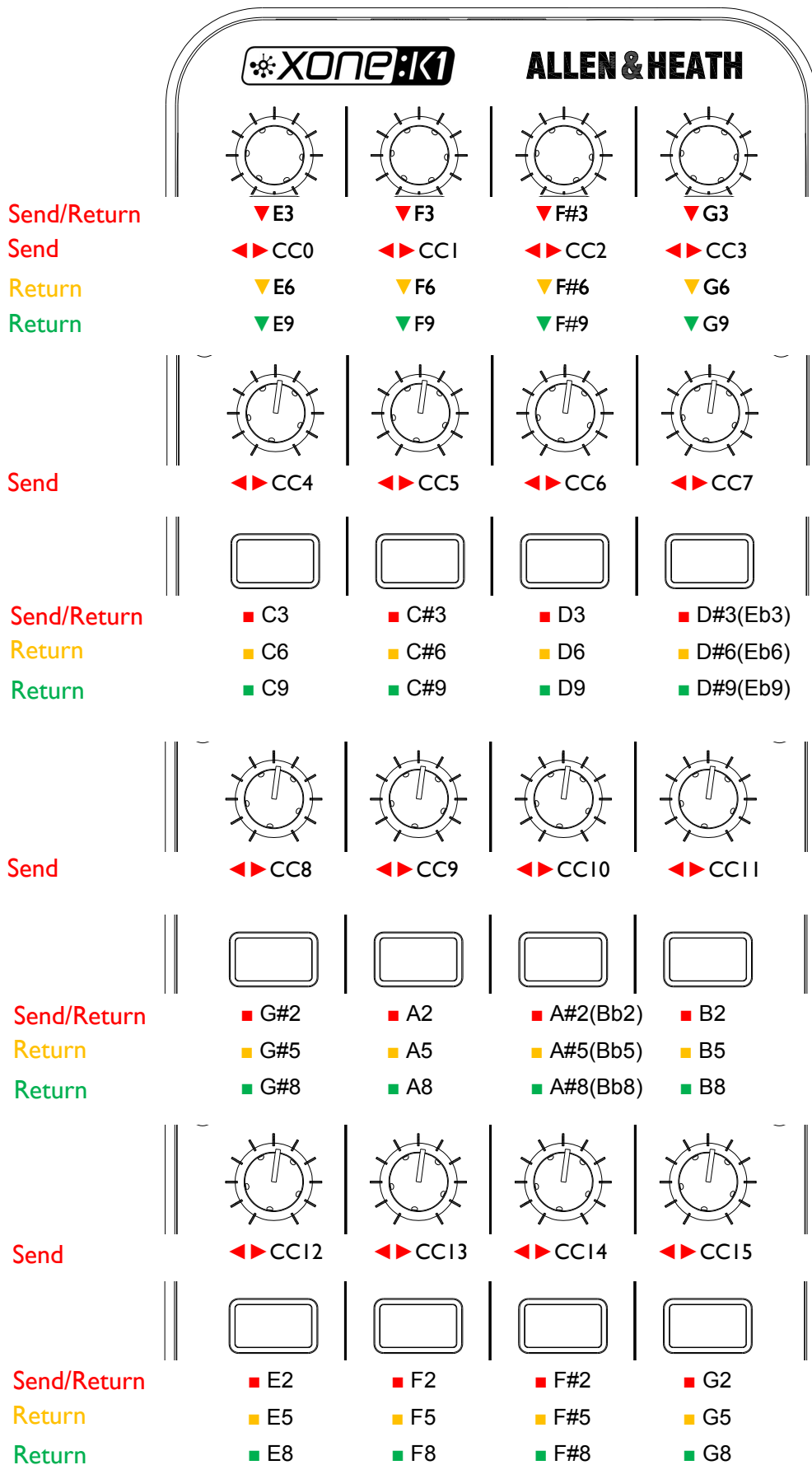
1. Go to: Preferences > Controller Manager.
2. Select "XONE:KI" as the Device.
3. Select the function to learn.
4. Press "Learn".

Ableton Live

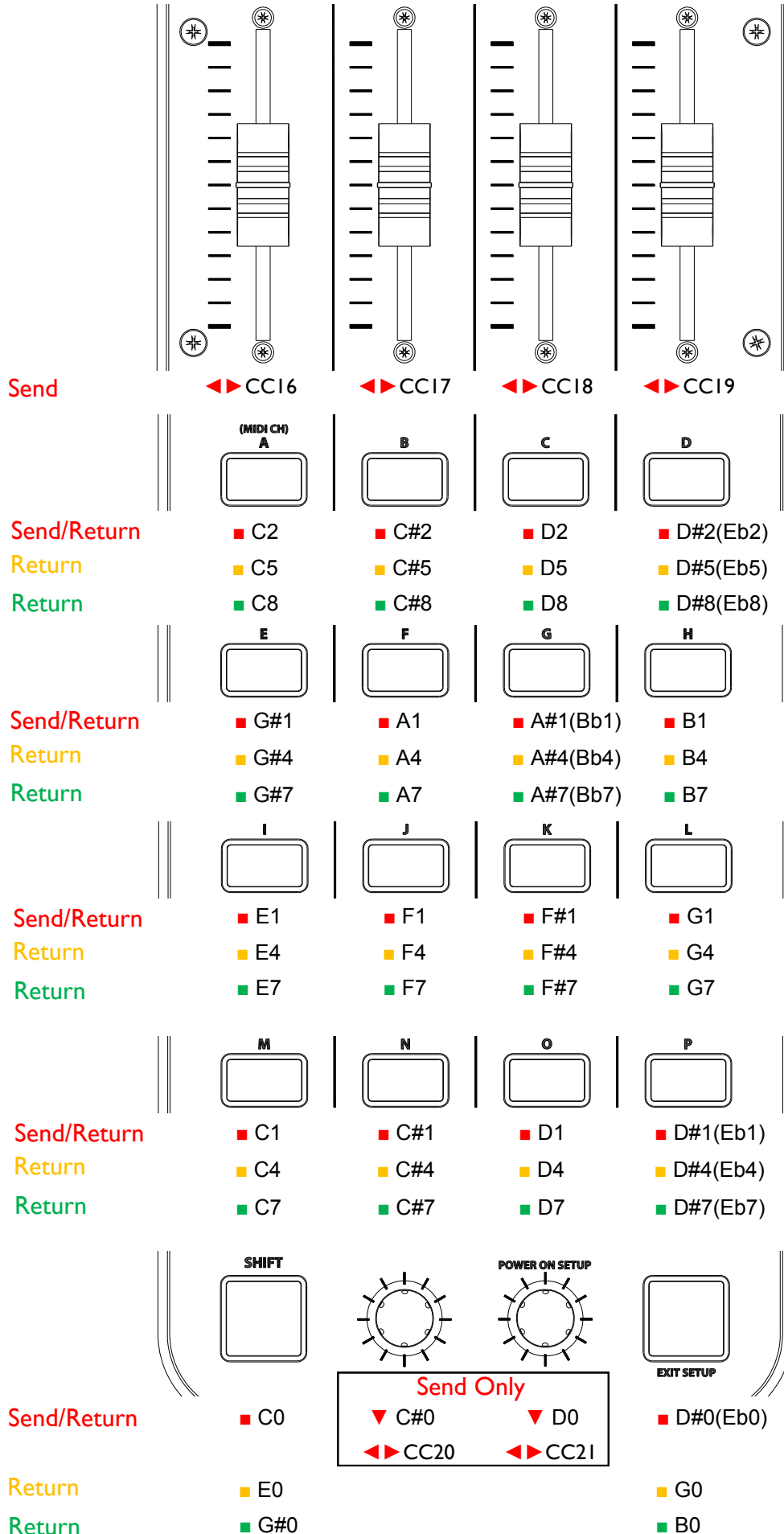


1. Select the "MIDI Map Switch" to ON.
2. Click on a given control in Ableton.
3. Move the associated XONE:KI control that you wish to assign.

MIDI IMPLEMENTATION



MIDI IMPLEMENTATION



MIDI NOTE IMPLEMENTATION TABLE

Octave	Note Numbers																							
	C		C# / Db		D		D# / Eb		E		F		F# / Gb		G		G# / Ab		A		A# / Bb		B	
-1	0	0	1	1	2	2	3	3	4	4	5	5	6	6	7	7	8	8	9	9	10	0A	11	0B
0	12	0C	13	0D	14	0E	15	0F	16	10	17	11	18	12	19	13	20	14	21	15	22	16	23	17
1	24	18	25	19	26	1A	27	1B	28	1C	29	1D	30	1E	31	1F	32	20	33	21	34	22	35	23
2	36	24	37	25	38	26	39	27	40	28	41	29	42	2A	43	2B	44	2C	45	2D	46	2E	47	2F
3	48	30	49	31	50	32	51	33	52	34	53	35	54	36	55	37	56	38	57	39	58	3A	59	3B
4	60	3C	61	3D	62	3E	63	3F	64	40	65	41	66	42	67	43	68	44	69	45	70	46	71	47
5	72	48	73	49	74	4A	75	4B	76	4C	77	4D	78	4E	79	4F	80	50	81	51	82	52	83	53
6	84	54	85	55	86	56	87	57	88	58	89	59	90	5A	91	5B	92	5C	93	5D	94	5E	95	5F
7	96	60	97	61	98	62	99	63	100	64	101	65	102	66	103	67	104	68	105	69	106	6A	107	6B
8	108	6C	109	6D	110	6E	111	6F	112	70	113	71	114	72	115	73	116	74	117	75	118	76	119	77
9	120	78	121	79	122	7A	123	7B	124	7C	125	7D	126	7E	127	7F								
	DEC	HEX	DEC	HEX	DEC	HEX	DEC	HEX	DEC	HEX	DEC	HEX	DEC	HEX	DEC	HEX	DEC	HEX	DEC	HEX	DEC	HEX	DEC	HEX

CC	Hex	Note
0	0x00	C-1
1	0x01	C#-1
2	0x02	D-1
3	0x03	D#-1
4	0x04	E-1
5	0x05	F-1
6	0x06	F#-1
7	0x07	G-1
8	0x08	G#-1
9	0x09	A-1
10	0x0A	A#-1
11	0x0B	B-1
12	0x0C	C0
13	0x0C	C#0
14	0x0D	D0
15	0x0E	D#0
16	0x10	E0
17	0x11	F0
18	0x12	F#0
19	0x13	G0
20	0x14	G#0
21	0x15	A0

SPECIFICATIONS

Dimensions and Weights

	Width	Height	Depth	Weight
Xone:KI	135 mm(5.3")	54 mm(2.1")	358 mm(14")	1.0kg (2.2lbs)
Packed	210 mm(8.3")	110 mm(4.3")	460 mm(10.2")	1.65kg (3.6lbs)

Registering your product

Thank you for buying the Allen & Heath Xone:KI. We hope that you are happy with it and that you enjoy many years of faithful service with it.

Please go to www.allen-heath.com/support/register-product/ and register your product's serial number and your details. By registering with us and becoming an official Registered User, you will ensure that any warranty claim you might make is actioned quickly and with the minimum delay.

Alternatively, you may either copy or cut off this section of the page, fill in the details, and return it by mail to:

Allen & Heath Ltd, Kernick Industrial Estate, Penryn, Cornwall TR10 9LU, UK

ALLEN&HEATH PRODUCT REGISTRATION

Thankyou for buying an Allen & Heath product. We hope that you're happy with it and that you enjoy many years of faithful service with it.

SERIAL NUMBER

Please return this section of the card by mail and retain the other part for your records. You can also register online at www.allen-heath.com. Thanks for your help.

Your Name: _____

Company Name: _____

Address 1: _____

Address 2: _____

Town/City: _____ County/State: _____

Country: _____ Postcode/Zip: _____

Telephone: _____

Email: _____

Why did you choose this console? _____

Which other products did you consider before choosing A&H? _____

Is there any thing you would like to improve on this mixer? _____

What audio magazines do you read? _____

If you were going to design a mixer for your work, what are the 6 most important features it should have (in order of importance)

1	2	3	4	5	6
---	---	---	---	---	---

We may use the information you provide to inform you of future product developments. We will not give or sell this data to third parties. Please indicate with an 'x' if you do not wish to receive any further communications from us.