



AV3

**3.9mm
VIDEO
WALL**



AV3 (AV3039)

SPECIFICATIONS:

- Pixel Pitch: 3.91mm (0.25")
- LED Configuration: 3-in-1 SMD2121 LED
- Pixel Density: 128x128 27,777 per square meter
- For indoor use only
- Size: 500 x 500 x 100mm / 19.75" x 19.75" x 4"
- Module Quantity: 4
- Weight: 20 lbs. / 9kg.

MECHANICAL RATINGS:

- Surface Flatness: Gaps<0.5mm

OPTICAL RATINGS:

- Brightness: 1000 NITS
- View Angle: Horizontal 120°/Vertical 120°
- Distance: 20ft (4m)
- Gray Scale / Display Color: 14Bit
- Brightness Adjustment: 0~100% 100 Levels
- Processing: 14-bit

POWER SUPPLY:

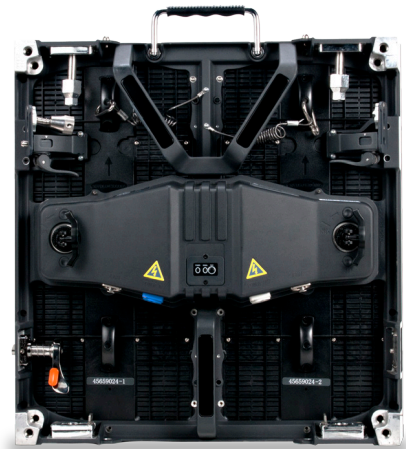
- Operation Power: 100~240V 50-60Hz
- Max. Power Consumption: 170W/per panel
- Ave. Power Consumption: 70W/per panel
- Connections Power/Data: Power-PowerCon In/Out; Data EtherCon In/Out

ENVIRONMENTAL:

- Operating Temp / Humidity: Fahrenheit: -4° + 104° / Celsius: -20° + 40°/ 10-90% (No Condensation)
- Operating Life / MTBF: 50,000 Hours / 5,000 Hours
- Protection Level: IP20 (Front and Back)
- Out of Control Rate: <0.02%
- Listings: ETL, CE, FCC Class A, RoHS, China RoHS

AV3FC - ROAD CASE

- Fits 8 AV3 video panels (AV3095)
- 9mm Plywood
- Butterfly Latches
- Swivel Castors
- Steel Ball Corners
- Foam Inlay



AV3RBI - RIGGING BAR

- Single panel rigging bar for AV3 (AV3070)
- Up to 15 panels max vertical hang



MEDIA SOFTWARE*

Media Master Express 4 (MED592)

- Control video layers with just a few DMX dimmers or MIDI notes
- Work on a single DMX universe or MIDI channel
- Drag & Drop visuals directly on the main interface
- Organize your shows with up to 64 patches of 64 cells
- Control up to 3 parameters per cell via DMX or MIDI
- Optional fade time on trigger

* Requires a computer (sold separately)



PROCESSOR* (VX4001)

Novastar VX4S Video Processor/Switcher/Scaler

CONTROL SYSTEM:

- Support Input: DP / HDMI / VGA / DVI / CVBS / SDI
- Control Distance: Ethernet Cable <100m or Fiber Optic>120m
- Support up to 1920 x 1200p
- Includes cables: DP / VGA / USB / HDMI / DVI / CAT5 / Power

* Requires a computer (sold separately)

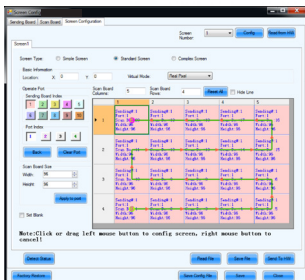


MEDIA SOFTWARE*

Grand VJ 2.0 (GRA200)

- Powerful video mixing software
- Supports most common media formats

* Requires a computer (sold separately)



PROCESSOR* (MCT300)

Novastar MCTRL300 Video Processor

CONTROL SYSTEM:

- Control Mode: Synchronous Display with Control PC by DVI
- Frame Update Frequency: 50-60Hz
- Scan Mode: 1/12 Duty
- Refresh Rate: 1200Hz
- Support Input: Composite, S-Video, Component, VGA, DVI, HDMI, HD_SDI
- Control Distance: Ethernet Cable <100m or Fiber Optic>120m
- Support VGA Mode: 1280 x 1024, 1024 x 1200, 1600 x 848, 1920 x 712, or 2048 x 668.
- Brightness Correction: Pixel, Module, Cabinet

* Requires a computer (sold separately)

AV6 ACCESSORIES

Cabinet to Cabinet Data Link Cables STANDARD CONNECTORS

SKU	Model	Description
CAT303	CAT303	3' data cable, cabinet to cabinet, horizontal and vertical
CAT305	CAT305	5' data cable, cabinet to cabinet, horizontal and vertical
CAT310	CAT310	10' data cable, cabinet to cabinet, horizontal and vertical
CAT315	CAT315	15' data cable, cabinet to cabinet, horizontal and vertical
CAT325	CAT325	25' data cable, cabinet to cabinet, horizontal and vertical
CAT350	CAT350	50' data cable, cabinet to cabinet, horizontal and vertical
CAT400	CAT400	100' data cable, cabinet to cabinet, horizontal and vertical

Cabinet to Cabinet Data Link Cables NEUTRIK ETHERCON

SKU	Model	Description
CAT113	CAT6PRO3	3' data cable, cabinet to cabinet, horizontal and vertical
CAT005	CAT6PRO5	5' data cable, cabinet to cabinet, horizontal and vertical
CAT010	CAT6PRO10	10' data cable, cabinet to cabinet, horizontal and vertical
CAT015	CAT6PRO15	15' data cable, cabinet to cabinet, horizontal and vertical
CAT025	CAT6PRO25	25' data cable, cabinet to cabinet, horizontal and vertical
CAT050	CAT6PRO50	50' data cable, cabinet to cabinet, horizontal and vertical
CAT100	CAT6PRO100	100' data cable, cabinet to cabinet, horizontal and vertical

Processor to Cabinet First Data Cables STANDARD CONNECTORS

SKU	Model	Description
CAT451	CAT6S25FC	25' first data cable, processor to first cabinet *STANDARD
CAT461	CAT6S50FC	50' first data cable, processor to first cabinet *STANDARD
CAT471	CAT6S100FC	100' first data cable, processor to first cabinet *STANDARD

Processor to Cabinet First Data Cables NEUTRIK ETHERCON

SKU	Model	Description
CAT251	CAT6PRO25FC	25' first data cable, processor to first cabinet *NEUTRIK ETHERCON
CAT261	CAT6PRO50FC	50' first data cable, processor to first cabinet *NEUTRIK ETHERCON
CAT271	CAT6PRO100FC	100' first data cable, processor to first cabinet *NEUTRIK ETHERCON

Power Link Cables (14AWG 3*2.08mm2) NEUTRIK POWERCON

SKU	Model	Description
PLC1	PLC1	1.5' power link cable, cabinet to cabinet, horizontal
PLC3	PLC3	3' power link cable, cabinet to cabinet, horizontal and vertical
PLC6	PLC6	6' power link cable, cabinet to cabinet, horizontal and vertical
PLC10	PLC10	10' power link cable, cabinet to cabinet, horizontal and vertical
PLC15	PLC15	15' power link cable, cabinet to cabinet, horizontal and vertical
PLC25	PLC25	25' power link cable, cabinet to cabinet, horizontal and vertical

Main Power Cables (14AWG 3*2.08mm2) NEUTRIK POWERCON

SKU	Model	Description
MPC010	MPC10	10' Powercon to Edison Main power cable
MPC015	MPC15	15' Powercon to Edison Main power cable
MPC025	MPC25	25' Powercon to Edison Main power cable
MPC050	MPC50	50' Powercon to Edison Main power cable

