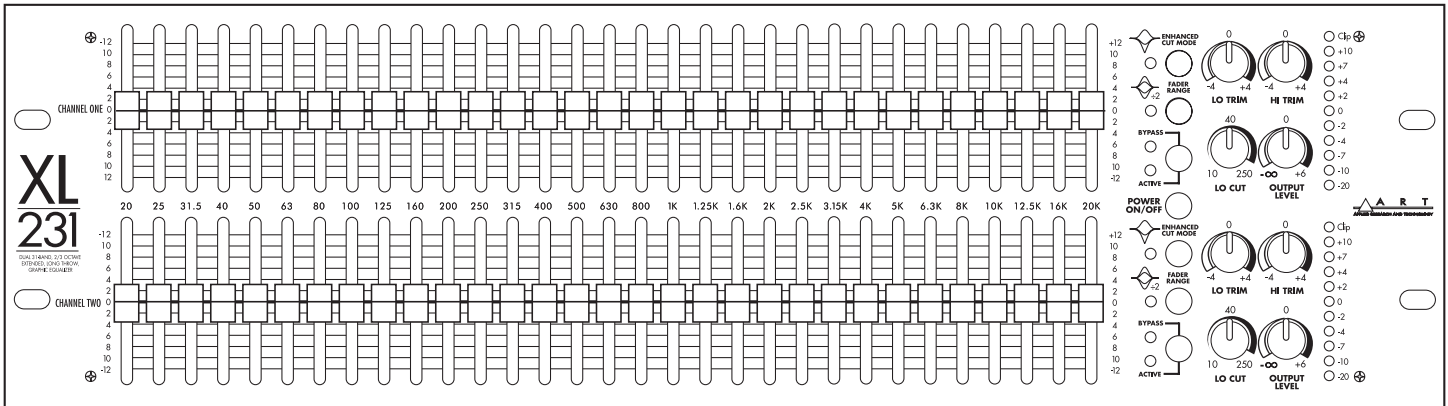


XL-231

Dual 31-Band, 1/3 Octave, Extended Long Throw, Graphic EQ



Features:

- ✓ Greater than 123dB dynamic range. (Ultra Low Noise & High Output.)
- ✓ 40 Volt internal circuitry for added headroom, and line driving capability.
- ✓ High and Low frequency "Trim" controls. (For sweetening overall sound after EQ has been set.)
- ✓ Enhanced Cut Mode: Up to -18dB narrow band dips to control resonance's with minimal change to the sound.
- ✓ Normal and Enhanced Modes also have Half-Scale modes for a total of 4 Boost/Cut modes.
- ✓ 10 Segment LED level meters with "Peak-Hold" and clipping indication.
- ✓ Constant Q design with interleaved filter banks to reduce band interaction.
- ✓ High precision filters with 2% film capacitors, 1% resistors.
- ✓ Built-in RFI suppression.
- ✓ Grounded center-tapped slide potentiometers for true zero flat position.
- ✓ 45mm metal shaft slide potentiometers with center detents, and mixing desk style knobs.
- ✓ Automatic relay bypass if power is lost.
- ✓ Euroblock detachable barrier strips, XLR, and 1/4" phone Ring-Tip-Sleeve balanced inputs and outputs.
- ✓ Toroidal power transformer.
- ✓ Two 31-Band Equalizers in three rack spaces. (Saves one rack space over two full throw 31 Band EQs.)

Specifications:

Dimensions	5.25" H x 19" W x 8" D 133mm x 483mm x 203mm
Weight	12 lbs. (5.4 kg)
EQUALIZER	
Bands	2 x 31, 1/3 Octave, ISO Spacing
Type/Accuracy	Constant Q, 3% Center Frequency
Slide Potentiometers	45 mm, Positive Center Detent, Metal Shaft, Grounded Center Tap.
Range	(+/- 6 dB) or (+/- 12 dB) Selectable w/Enhanced Cut (+6/-9 dB) or (+12/-18 dB) Selectable
Overall Gain Range	Off to +6 dB (sliders centered)
INPUTS	
Type	Active Balanced
Connectors	3-Pin XLR, TRS 1/4" phone, Euroblock
Impedance	9.4K Ohms Balanced.
Maximum Input Level	+24 dBu, Balanced, ≤1% THD, [EQ and Level centered]
OUTPUTS	
Type	3-Pin XLR, Euroblock - Active Balanced TRS 1/4 inch phone - Impedance Balanced
Connectors	3-Pin XLR, TRS 1/4 inch phone, Euroblock
Impedance	≤ 200 Ohms
Maximum Level	+26 dBu, Balanced, 20-20K Hz, into ≥600 Ohms, ≤1% THD

RFI Input Filters	Yes
Bypass Switching	Passive, Relay
Clip LED Threshold	3dB below clipping. Sensed at all gain stages.
High Pass Filter	10 to 250 Hz - 12dB/Oct
High Trim	+/- 4 dB @ 10 KHz
Low Trim	+/- 4 dB @ 40 Hz
Frequency Response	[EQ and Level centered, HPF fully counter clockwise] (+0/-0.25 dB 20-20K Hz), (+0/-1 dB 17-50K Hz), (+0/-3 dB 10-80K Hz)
THD+Noise	< 0.005%, @ +4 dBu, 20-20K Hz, 22 KHz BW, [EQ and Level centered] (typically 0.003% @ 1 KHz)
IM Distortion (SMPT)	< 0.004%, @ +4 dBu, [EQ and Level centered]
Signal to Noise Ratio	≥ 96 dB, Ref. 0 dBu, 22 KHz BW, unweighted, [EQ and Level centered]
Headroom	+24 dB, Ref. 0 dBu
Dynamic Range	≥ 120 dB, Ref. +24 dBu, 22 KHz BW
Channel Separation	≥ 90 dB @ 1 KHz, +4 dBu
Common Mode Rejection	≥ 60 dB @ 1 KHz
Line Voltage	95-125 VAC 50/60 Hz 190-250 VAC 50/60 Hz
Input AC Power	31 Watts Typical
Construction	All Steel Chassis Aluminum Front Panel

Note: 0 dBu = 0.775 Vrms

Applications:

Live Sound Systems/PA, Permanent or Fixed Installations, Church, Club and Practice PA Systems, DJ Sound Systems, Home and Project Recording Systems, and Monitor Systems.

Celebrating Twenty Years of Audio.

