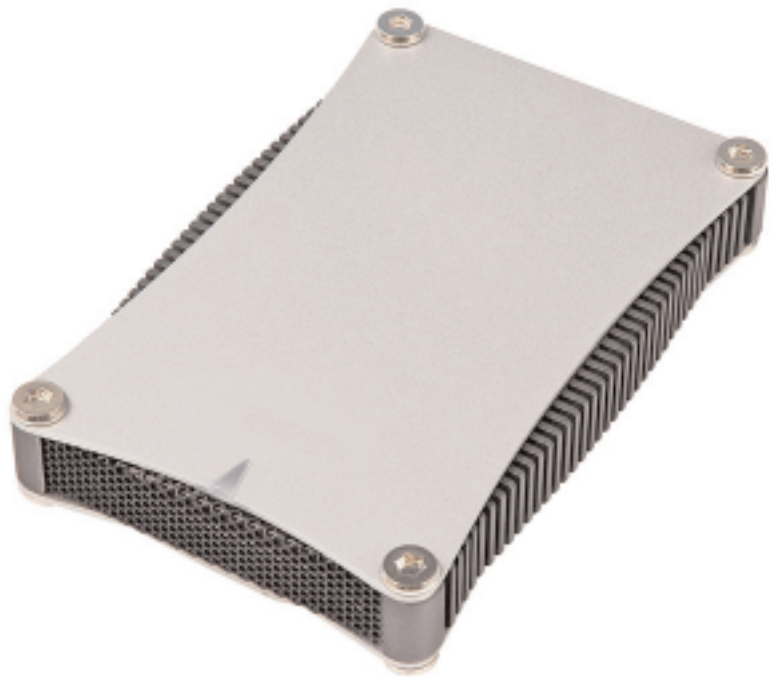


PortaGig



PortaGig Features:

- Up to 100GB
- Weighs less than 10 Ounces
- Tested and approved with Digidesign Pro Tools.
- FireWire 400 and USB interfaces
- 7,200 rpm, 8MB cache
- Small, portable, aluminum case runs quietly with fanless design.
- Applications: Field recording, storing and exchanging A/V, graphics, prepress, and desktop publishing files.
- Optional power supply available
- Included leather carrying case

PortaGig can be run successfully from FireWire bus power supplied by many notebook computers, however Glyph can't guarantee compatibility with all notebooks due to differing bus power specs. If you want to guarantee PortaGig will work, specify the optional DC supply from your Glyph dealer.

Bus-Powered 7,200 RPM Mini-Drive.

The PortaGig hard drive makes portable recording and editing easy. With its tiny bus-powered enclosure, it's small enough to fit into a pocket, and powerful enough to support high track-count audio sessions. With FireWire 400 and USB 2.0 interfaces, PortaGig is compatible with Mac, Windows and Linux systems supporting FireWire or USB. Designed with a fanless, light aluminum enclosure, it allows you to work on the road easily and reliably. If bus power is not available or is insufficient, you can use the optional power supply.

Technical Specifications

- Capacity: 80GB, 100GB
- Interface: FireWire (IEEE-1394a) and USB 2.0
- Rotational speed: 7,200 RPM
- Average seek time (read): 10 msec
- Max external transfer rate (FireWire): 400 Mb/sec (50 MB/sec)
- Sustained transfer rate: up to 35 MB/sec
- Buffer size: 8MB
- Dimensions (HxWxD): .86 x 3.3 x 5.2 inches
- Weight: .6 lbs. / .3 kg
- Power supply (sold separately): universal auto switching 100-240V
- Approvals: CE
- Warranty: 1 year
- Compatible with: Mac OS 8.6/9.x/X.x, Windows 98SE/Me/2000/XP
- Pre-formatted HFS+, Includes instructions to format it for other OS's
- Includes: FireWire 400 (6pin to 6pin) cable, USB cable, leather sleeve, manual on CD



netDrives by GLYPH

810041 PortaGig Nov18, 2005



227 Cherry St. 800.335.0345
Ithaca, NY glyphtech.com