

MP-1.5NPT-GSA

(150lb. WLL)

GIMBALLED STRUT ADAPTER

SwivelMount™



CEILING MOUNT

Use Adaptive's gimballed strut attachment to suspend loudspeakers, video displays and other objects from Unistrut when attached to angled ceiling and roof structures, up to 90 degrees off vertical. This adapter mounts quickly and permanently to Unistrut channel with 1/2-13 spring loaded nuts (not included) or can be bolted through the strut when space permits. This SwivelMount suspends and locks objects weighing up to 150 lb using standard 1- 1/2" diameter steel pipe.



BC-GSA-100 (optional)

Use BC-GSA-100 to attach to glulam

KEY FEATURES:

- ▶ For overhead audio & video applications.
- ▶ Adapts to standard off-the-shelf schedule 1-1/2" NPT and NPS threaded steel pipe

OPTIONAL ACCESSORIES:

- ▶ See Threaded Rod Datasheet
- ▶ Glulam Wood Beam Attachment - **BC-GSA-100**

SPECIFICATIONS:

Material: Structural Steel
Finish: Powder Coat
Color: Black
Design Factor: 7:1
WLL: 150lbs
Shipping Weight: 6.5lb/3kg

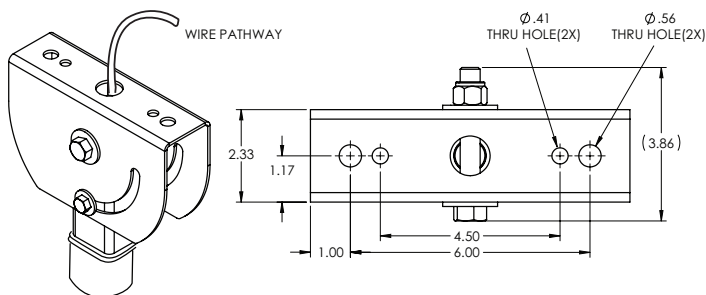
PACKAGE CONTENTS:

1pc: Gimbal Strut Adapter
2pc: 3/8" Flat Washer
1pc: Instruction Sheet
2pc: 2 pcs Flange bolt 1/2-13x2"
2pc: Retainer nut, 1/2-13
2pc: Nyloc Nut, 1/2-13

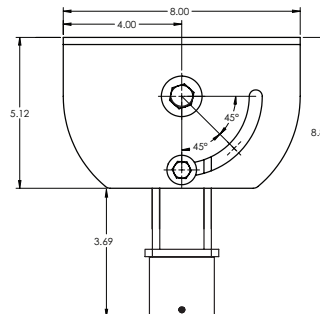
DIMENSIONS:

MP-1.5NPT-GSA

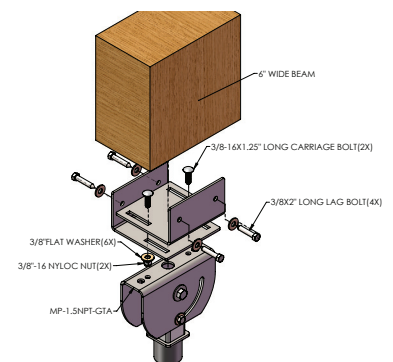
TOP VIEW



SIDE VIEW



OPTIONAL GLULAM BRACKETS
BC-GSA-100



Rated for indoor use.

Adaptive Technologies Group
1635 E. Burnett Street | Signal Hill, CA 90755 USA
Ph: 562.424.1100 | Fax: 562.424.3520
www.adapttechgroup.com



ALWAYS INSTALL SAFETY CABLES

WARNING: Mounting and/or suspension of audio and video equipment requires experienced professionals. Improperly installed loudspeakers can result in property damage, personal injury and/or liability to the installing contractor.