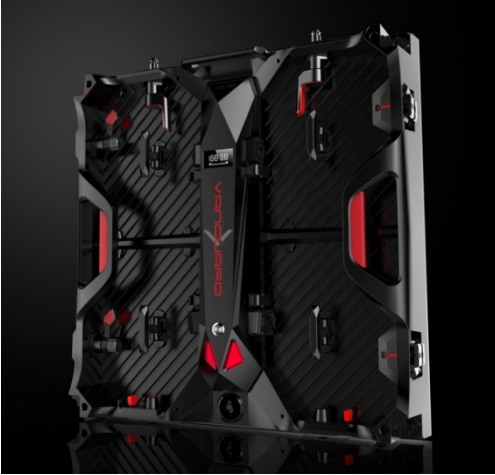


# Product Specifications



## TUNGSTEN SERIES

Outdoor P3.9 • Durable & Rugged LED Cabinet



### Overview

Vanguard's Tungsten cabinet available in P3.9, features edge corner protectors and raised modules to provide protection the lamps. Tungsten is the durable cabinet that the display industry has been waiting for as it can withstand the rigors of any environment. The cabinet is front or rear serviceable and has a die-cast aluminum frame. The power supply module can easily be swapped as a single unit by detaching 4 clips, pulling the PSU and replacing it with a new one. LED modules can be quickly removed using a glass suction cup tool and replaced with a new module. The 8 point integral locking system enables quick assembly as well as precise alignment. The internal side locks allow for curvature up to 5 degrees concave or convex. Aluminum module covers improve flatness uniformity which allows for the protective resin encasement to be as flat and uniform as possible. Aluminum module covers also improve heat dissipation over traditional modules. This product is suitable for simulation structures for military, maritime, and aviation applications.

### Additional Features

- Fine pixel pitch outdoor cabinet allows for higher resolution images to be displayed regardless of environment.
- Fold-over edge protectors for keeping cabinet corners protected during set-up and tear down.
- Aluminum modules provide greater flatness uniformity for improved resin flatness and uniformity.
- Aluminum modules provide improved heat dissipation.
- Curvable 5 degrees concave or convex.
- Low Power Consumption.
- 14+-bit gray scale.
- Removable PSU and data housing.
- No internal ribbon cables.
- Superb color & brightness uniformity.
- Refresh rate minimum of 2880Hz
- Contrast Ratio: 3000:1

# Specifications

## Tungsten Outdoor P3.9

### LED

---

LED Type	SMD1R1G1B
LED Configuration	3 in one
Pixel Density	160,000/m <sup>2</sup>
Module Size	9.84" x 9.84"
Module Resolution	64 x 64
Modules Per Cabinet	4
Lifetime to Half Brightness (L50)	100,000
Contrast Ratio	3,000:1
Brightness	4500-5000Nits
Viewing Angle	140°

### CABINET

---

Cabinet Material	Die Cast Aluminum
Cabinet Size	19.8" x 19.8"
Cabinet Resolution	128 x 128
Min. Viewing Distance	13 ft.
Modules Per Cabinet	4
Cabinet Weight	19.1lbs.
Service Access	Front or Rear
IP Rating	IP30

---

### INTERNAL OPERATION

---

Driving Method	1/15 <sup>th</sup> Scanning
Gray Scale	14bit
IC Driver	Chipone 2053
Refresh Rate	>2880Hz
Frame Frequency	60Hz

### AC POWER

---

Source Voltage	100-240V, 50/60Hz
Max Power Consumption	200W
Avg. Power Consumption	100W

### ENVIRONMENTAL

---

Operating Temperature	-10°C to +50°C
Storage Temperature	-20°C to +60°C
Operating Humidity	20% to 90% RH

---

# Specifications

