

## Black pixel tape RGBW 8PXW60-4-B



### Features

- RGBW, 4 in 1 full colour LED pixel tape.
- Individually addressable led pixels, suitable for stage, entertainment and architectural applications
- 60 Pixels/meter density
- Designed for use with ENTTEC Pixel Link System
- Maximum 14.3 Watts/Metre
- Maximum 402 Lumens/Metre
- WS2812B chips built into 5050 RGB LEDs
- Each pixel can achieve 4,294,967,296 full colour display and scan frequency not less than 400Hz/s
- 3M adhesive double side tape at the back
- Built-in data signal reshaping circuit
- 5V DC input supply voltage
- Flexible construction material
- Small LED pitch
- Can be joined together
- Can be cut into a smaller length
- IP20 Indoor use only

### Safety

- Do not expose this tape to rain
- Do not allow liquid to build up around the tape.
- Do not exceed the rated 5V DC power supply.
- Please adhere to installation instruction sheet
- This unit is intended for indoor use only, use of this product outdoors voids all warranties.
- Do not put excess pressure on the tape, as it can damage the leds.

### Specifications

Item	8PXW60-4-B	
<b>Input Voltage</b>	+4.8V ~ +5.2VDC	
<b>Data line Voltage</b>	-0.5V ~ VCC+0.5V	
<b>Watts/meter (max)</b>	Red	2.9
	Green	2.95
	Blue	2.95
	All (RGB)	8.8
	White	5.5
	Total	14.3
<b>Lumens/meter</b>	RGB: 174 W: 228 Total: 402	
<b>DMX Channels/LED</b>	4	
<b>Beam angle</b>	120 °	
<b>Control protocol</b>	WS2812B	
<b>Connector</b>	JST SM connectors	
<b>Weight (5m roll)</b>	250g	
<b>Operating temperature</b>	5°C to 50°C	
<b>Pixel Mapping Order</b>	GRBW	
<b>Front polymer encapsulation seal</b>	No	

#### Note

Power measurements calculated using 1m Tape driven at 5V.

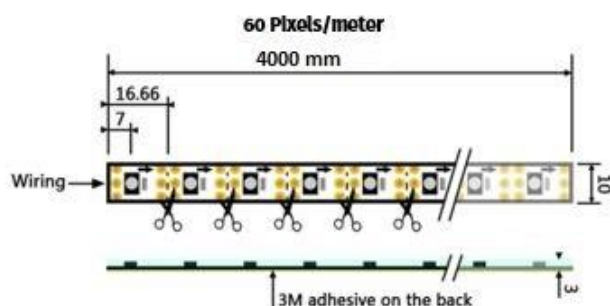
### Effects of Voltage drop

Color	Maximum length, before color change is evident	
	Single Injection	Dual Injection
Red	8.5 m	8.5 m
Green	8.5 m	8.5 m
Blue	8.5 m	8.5 m
White (only)	5 m	8.5 m
All On	1.5 m	8.5 m

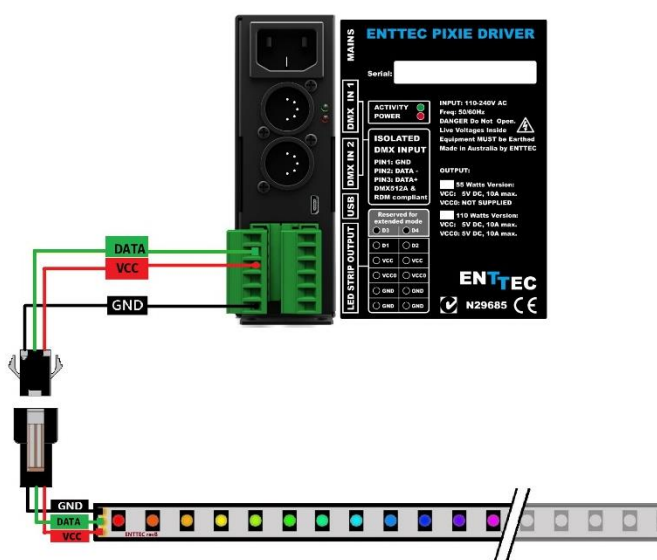
#### Note

Used 180W power supply at a lower intensity to evaluate voltage drop for white (only) and all on tests

## Physical Dimensions



## Connections with Pixie Driver:



### Notes:

- The middle wire of the tap JST connector is always DATA regardless of color
- It is important to turn off the mains to the devices before doing any led tape connections.

## Connections with Plink Injector:



### Notes:

- The wire in the middle of a JST connector is always DATA regardless of color
- It is important to turn off the mains to the devices before doing any led tape connections.

## Ordering Information

The ENTTEC 8P Pixel strips and compatible products can be ordered from our website or through your ENTTEC dealer.

Item	Value
73540	PIXIE DRIVER 5V (110 WATTS)
73541	PIXIE DRIVER 5V (55 WATTS)
73546	Plink Injector 5V
8PXW60-4-B	RGBW PIXEL TAPE 60 LEDS/METER 5V - 4M Roll BLACK NO COATING

# enttec.com

MELBOURNE AUS / LONDON UK / RALEIGH-DURHAM USA