







# PLATFORM-X WAVES

MIDI/Audio control surface with motorized faders



For the Waves eMotion LV1 Live Mixer



	<p><b>CAUTION</b></p> <p>RISK OF ELECTRIC SHOCK DO NOT OPEN RISQUE DE CHOC ELECTRIQUE NE PAS OUVRIR</p> <p>CAUTION: TO REDUCE THE RISK OF ELECTRIC SHOCK DO NOT REMOVE COVER (OR BACK) NO USER-SERVICEABLE PARTS INSIDE REFER SERVICING TO QUALIFIED PERSONNEL</p> <p>ATTENTION: POUR EVITER LES RISQUES DE CHOC ELECTRIQUE: NE PAS ENLEVER LE COUVERCLE. AUCUN ENTRETIEN DE PIECES INTERIEURES PAR L'USAGER. CONFIER L'ENTRETIEN AU PERSONNEL QUALIFIE.</p> <p>AVIS: POUR EVITER LES RISQUES D'INCENDIE OU D'ELECTROCUTION, N'EXPOSEZ PAS CET ARTICLE A LA PLUIE OU A L'HUMIDITE</p>		  	<p>The lightning flash with arrowhead symbol within an equilateral triangle is intended to alert the user to the presence of uninsulated dangerous voltage within the product's enclosure, that may be of sufficient magnitude to electric shock to persons. Le symbol clair avec point de flèche à l'intérieur d'un triangle équilatéral est utilisé pour avertir l'utilisateur de la présence d'intérieur du coffret de voltage dangereux non isolé d'ampleur suffisante.</p> <p>The exclamation point within an equilateral triangle is intended to alert the user of the presence of important operating and maintenance (servicing) instructions in the literature accompanying the appliance. Le point d'exclamation à l'intérieur d'un triangle équilatéral est employé pour avertir les utilisateurs de la présence d'instructions importantes pour le fonctionnement et l'entretien (service) dans le livret d'instruction accompagnant l'appareil.</p>
---	---	---	---	--

## ***Important Safety Instructions***

1. Read this manual thoroughly before using this unit.
2. Keep this manual for future reference.
3. Take notice of and comply with all warnings included in the user's manual or indicated on the appliance.
4. Follow all instructions included in this manual.
5. Do not expose this unit to rain or moisture. Avoid having water or other liquids spilled on this unit.
6. When cleaning the cabinet or other parts of this appliance, use only a dry or slightly damp soft cloth.
7. Do not block any ventilation openings or interfere with the proper ventilation of this unit. Install in accordance with the manufacturer's instructions.
8. Do not use or store near any heat sources such as radiators, heat registers, stoves, or other heat-producing appliances.
9. Do not interfere with the safety purpose of the polarized or grounding-type plug. A polarized plug has two blades with one wider than the other. A grounding-type plug has two blades and a third grounding prong. These are designated for your safety. If the provided plug does not fit into your outlet, consult an electrician.
10. Protect the power cord from being walked on or otherwise damaged by items placed on or against them. Particular attention should be given to the plugs, receptacles, and the point where the cord exits the appliance.
11. To avoid the risk of electrical shock, do not touch any exposed wiring while the unit is in operation.
12. Only use attachments/accessories specified by the manufacturer.
13. Unplug this unit and all connected electrical equipment during lightning storms or when left unused a long period of time.
14. Refer all servicing to qualified service personnel. Servicing is required when the appliance has been damaged in any way or fails to operate normally.

**WARNING: To reduce the risk of fire or electric shock, do not expose this unit to rain or moisture**

# **Contents**

Introduction.....	4
What's in the package? .....	4
Features .....	5
Front Panel Layout .....	6
Side Panel Layout .....	7
Getting Started .....	8
Configuring the Platform X WAVES Controller with eMotion LV1.....	9
Specifications .....	11

# Introduction

Thank you for purchasing the ICON Platform X WAVES MIDI/Audio control surface. We sincerely trust this product will provide years of satisfactory service, but if anything is not to your complete satisfaction, we will endeavor to make things right.

In these pages, you'll find a detailed description of the features of the Platform X WAVES, as well as a guided tour through its front and rear panels, step-by-step instructions for its setup and use, and full specifications.

You'll also find a warranty card enclosed—please don't forget to fill it out and mail it so that you can receive online technical support at: [www.iconproaudio.com](http://www.iconproaudio.com). And so we can send you updated information about this and other ICON products in the future. As with most electronic devices, we strongly recommend you retain the original packaging. In the unlikely event the product must be returned for servicing, the original packaging (or reasonable equivalent) is required.

With proper care and adequate air circulation, your Platform X WAVES will operate without any trouble for many years. We recommend that you record your serial number in the space provided below for future reference.

Please write your serial number here for future reference:

Purchased at:

Date of purchase:

## What's in the package?

- Platform X WAVES USB-MIDI Controller x 1pc
- CD x 1
  - App software – iMap (Mac & Windows)
  - User manual & QSG
  - DAW software
- Quick Start Guide x 1
- USB2.0 Cable x 1
- AC adaptor x 1pc

# Features



- Extremely compact, durable, and versatile
- Customize the perfect setup with a variety of platform extension modules
- 8 touch-sensitive motorized channel faders with 10-bit resolution
- 1 touch-sensitive motorized fader for the master channel, with 10-bit resolution
- 8 dual-function encoder knobs (rotate and enter)
- Illuminated buttons for each channel, including Sel, Mute, Solo
- Class-compliant with Windows XP, Vista (32-bit), Windows 7/8/10 (32-bit & 64-bit) Mac OS X (IntelMac)
- USB 2.0 high-speed connectivity
- Superior build quality and robust metal casing with Kensington lock port
- 12V/2.5A power adapter included

# Front Panel Layout



## 1. Channel faders

The eight 100mm motorized faders are generally used for controlling channel volume. They are all touch sensitive to allow override automation the moment you touch a fader. Also, they are motorized; they will automatically move to reflect the current level of the selected channels in your LV1.

## 2. Master fader

*This 100mm motorized fader operates the same as the other 8 faders. It can be assigned to any mixer channel.*

## 3. Knobs

The eight rotary encoder knobs are generally used for controlling the track pan position, aux send levels, and EQ and dynamics plugin parameters.

## 4. Channel control buttons

**REC buttons** - currently not implemented.

**SOLO buttons** - Turn on and off the solo/cue state of the associated channel. The switch lights red when the channel solo or cue state is on and other channels are muted.

**MUTE buttons** - Activate and deactivate the mute state of the associated channel. The switch will light red when the channel is muted.

**SEL buttons** - Select the associated channel for processing control. A channel does not need to be selected to use its fader or to activate mute or solo.

# Side Panel Layout



## 1. USB port

Functions as a MIDI port to your notebook (or computer) and compatible software.

## 2. LCD Module (Platform D/Platform D2)

Connect your Platform D/Platform D2 here with the provided cable.

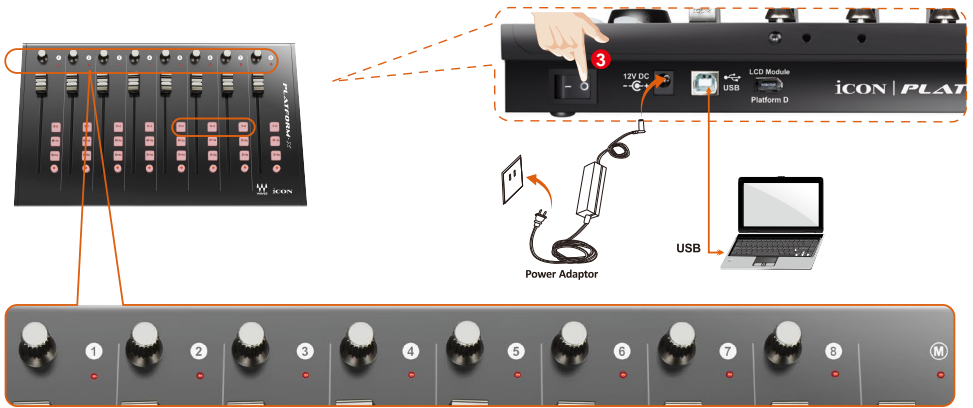
## 3. 12V/2.5A power adaptor

Connect the provided power adaptor here.

*(Note: Platform X WAVES cannot work without the provided power adaptor connected. The USB bus power is not able to provide sufficient power supply for Platform X WAVES.)*

# Getting Started

## Connecting Your Platform X WAVES Controller



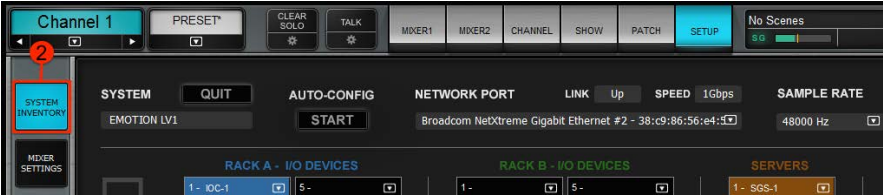
### Connect the Platform X WAVES to your Mac/PC via the USB port

Choose a USB port on your Mac/PC and insert the wide (fat) end of the USB cable. Connect the cable's other end to the Platform X WAVES. Your Mac/PC should automatically “detect” the new hardware and notify you that it is ready to use.



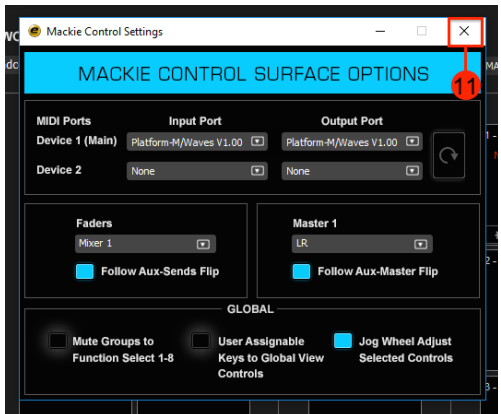
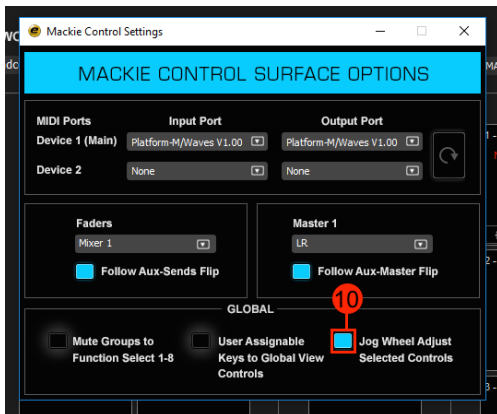
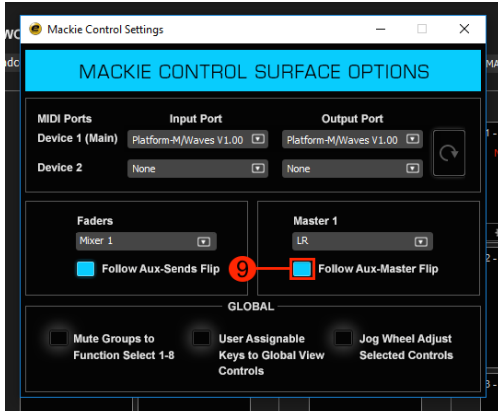
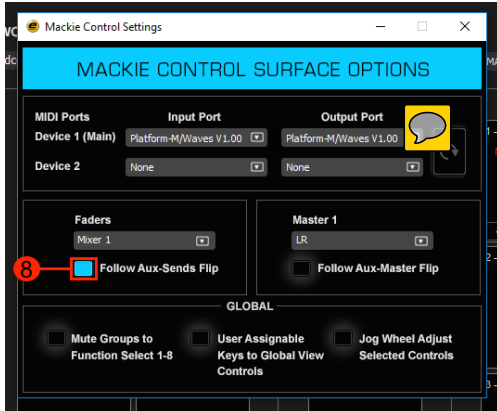
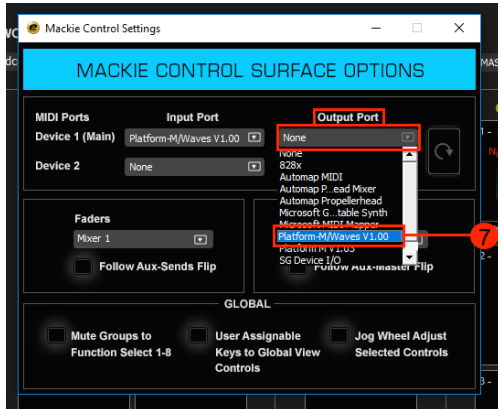
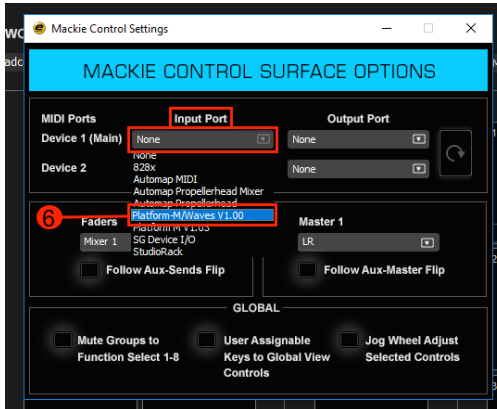
# eMotion LV1 Setup

## System Inventory Page



# eMotion LV1 Setup

## Mackie Control Panel



# Specifications

Connector:	To computer	USB connector
Power supply:		12V/2.5A DC
Current consumption:		2.0A or less
Weight:		1.765kg (3.89lb)
Dimensions:		395(L) x 196(W) x 58(H)mm 15.6"(L) x 7.7"(W) x 2.3"(H)



[www.iconproaudio.com](http://www.iconproaudio.com)



[www.support.iconproaudio.com](http://www.support.iconproaudio.com)



[www.twitter.com/iconproaudio](http://www.twitter.com/iconproaudio)



[www.instagram.com/iconproaudio](http://www.instagram.com/iconproaudio)



[www.facebook.com/iconproaudio](http://www.facebook.com/iconproaudio)



[www.youtube.com/iconproaudio](http://www.youtube.com/iconproaudio)

