

***Pioneer Dj***

DJ Controller

# DDJ-SX3

**serato** ||  **serato** DJ Pro

[pioneerdj.com/support/](http://pioneerdj.com/support/)  
<http://serato.com/>

For FAQs and other support information for this product, visit the above site.

Operating Instructions (Quick Start Guide)

# IMPORTANT



The lightning flash with arrowhead symbol, within an equilateral triangle, is intended to alert the user to the presence of uninsulated "dangerous voltage" within the product's enclosure that may be of sufficient magnitude to constitute a risk of electric shock to persons.

## CAUTION

**RISK OF ELECTRIC SHOCK  
DO NOT OPEN**

**CAUTION:**  
TO PREVENT THE RISK OF ELECTRIC SHOCK, DO NOT REMOVE COVER (OR BACK). NO USER-SERVICEABLE PARTS INSIDE. REFER SERVICING TO QUALIFIED SERVICE PERSONNEL.



The exclamation point within an equilateral triangle is intended to alert the user to the presence of important operating and maintenance (servicing) instructions in the literature accompanying the appliance.

D3-4-2-1-1b\_A1\_En

# IMPORTANT SAFETY INSTRUCTIONS

- 1) Read these instructions.
- 2) Keep these instructions.
- 3) Heed all warnings.
- 4) Follow all instructions.
- 5) Do not use this apparatus near water.
- 6) Clean only with dry cloth.
- 7) Do not block any ventilation openings. Install in accordance with the manufacturer's instructions.
- 8) Do not install near any heat sources such as radiators, heat registers, stoves, or other apparatus (including amplifiers) that produce heat.  
Do not defeat the safety purpose of the polarized or grounding-type plug. A polarized plug has two blades with one wider than the other. A grounding type plug has two blades and a third grounding prong. The wide blade or the third prong are provided for your safety. If the provided plug does not fit into your outlet, consult an electrician for replacement of the obsolete outlet. Protect the power cord from being walked on or
- 10) pinched particularly at plugs, convenience receptacles, and the point where they exit from the apparatus.
- 11) Only use attachments/accessories specified by the manufacturer.
- 12) Use only with the cart, stand, tripod, bracket, or table specified by the manufacturer, or sold with the apparatus. When a cart is used, use caution when moving the cart/apparatus combination to avoid injury from tip-over.
- 13) Unplug this apparatus during lightning storms or when unused for long periods of time.
- 14) Refer all servicing to qualified service personnel. Servicing is required when the apparatus has been damaged in any way, such as power-supply cord or plug is damaged, liquid has been spilled or objects have fallen into the apparatus, the apparatus has been exposed to rain or moisture, does not operate normally, or has been dropped.



D3-7-13-69\_En

## WARNING

This equipment is not waterproof. To prevent a fire or shock hazard, do not place any container filled with liquid near this equipment (such as a vase or flower pot) or expose it to dripping, splashing, rain or moisture.

D3-4-2-1-3\_A1\_En

## WARNING

To prevent a fire hazard, do not place any naked flame sources (such as a lighted candle) on the equipment.

D3-4-2-1-7a\_A1\_En

## CAUTION

The **STANDBY/ON** switch on this unit will not completely shut off all power from the AC outlet. Since the power cord serves as the main disconnect device for the unit, you will need to unplug it from the AC outlet to shut down all power. Therefore, make sure the unit has been installed so that the power cord can be easily unplugged from the AC outlet in case of an accident. To avoid fire hazard, the power cord should also be unplugged from the AC outlet when left unused for a long period of time (for example, when on vacation).

D3-4-2-2-2a\*\_A1\_En

## VENTILATION CAUTION

When installing this unit, make sure to leave space around the unit for ventilation to improve heat radiation (at least 5 cm at top, 5 cm at rear, and 5 cm at each side).

D3-4-2-1-7d\*\_A1\_En

## Operating Environment

Operating environment temperature and humidity:  
+5 °C to +35 °C (+41 °F to +95 °F); less than 85 %RH (cooling vents not blocked)

Do not install this unit in a poorly ventilated area, or in locations exposed to high humidity or direct sunlight (or strong artificial light).

D3-4-2-1-7c\*\_A2\_En

The graphical symbol  placed on the product means alternating current.

The graphical symbol  placed on the product means direct current.

The graphical symbol  placed on the product means Class II equipment.

When using this product, confirm the safety information shown on the bottom of the unit.

D3-4-2-2-4\_B1\_En

## BE SURE TO OBSERVE THE FOLLOWING GUIDELINES:

- Do not turn up the volume so high that you can't hear what's around you.
- Use caution or temporarily discontinue use in potentially hazardous situations.
- Do not use headphones while operating a motorized vehicle; the use of headphones may create a traffic hazard and is illegal in many areas.

S001a\_A1\_En

### Information to User

Alterations or modifications carried out without appropriate authorization may invalidate the user's right to operate the equipment.

D8-10-2\_A1\_En

### IMPORTANT NOTICE

THE MODEL NUMBER AND SERIAL NUMBER OF THIS EQUIPMENT ARE ON THE REAR OR BOTTOM. RECORD THESE NUMBERS ON PAGE 17 FOR FUTURE REFERENCE.

D36-AP9-3\*\_A1\_En

### WARNING

Store small parts out of the reach of children and infants. If accidentally swallowed, contact a doctor immediately.

D41-6-4\_A1\_En

### CAUTION

This product is evaluated in moderate climate condition.

D3-8-2-1-7b\_A1\_En

### NOTE:

This equipment has been tested and found to comply with the limits for a Class B digital device, pursuant to Part 15 of the FCC Rules. These limits are designed to provide reasonable protection against harmful interference in a residential installation. This equipment generates, uses, and can radiate radio frequency energy and, if not installed and used in accordance with the instructions, may cause harmful interference to radio communications. However, there is no guarantee that interference will not occur in a particular installation. If this equipment does cause harmful interference to radio or television reception, which can be determined by turning the equipment off and on, the user is encouraged to try to correct the interference by one or more of the following measures:

- Reorient or relocate the receiving antenna.
- Increase the separation between the equipment and receiver.
- Connect the equipment into an outlet on a circuit different from that to which the receiver is connected.
- Consult the dealer or an experienced radio/TV technician for help.

D8-10-1-2\_A1\_En

### FEDERAL COMMUNICATIONS COMMISSION DECLARATION OF CONFORMITY

This device complies with part 15 of the FCC Rules. Operation is subject to the following two conditions: (1) This device may not cause harmful interference, and (2) this device must accept any interference received, including interference that may cause undesired operation.

Product Name: DJ Controller

Model Number: DDJ-SX3

Responsible Party Name: PIONEER ELECTRONICS (USA) INC.  
SERVICE SUPPORT DIVISION

Address: 2050 W, 190th Street, Suite 100, Torrance, CA 90504, U.S.A

Phone: 1-310-952-2915

URL: [pioneerelectronics.com](http://pioneerelectronics.com)

D8-10-4\*\_C1\_En

---

---

# Contents

## How to read this manual

Thank you for buying this Pioneer DJ product.

- This manual briefly explains procedures of connecting this unit to your PC/Mac through outputting sound. For more details on how to use this unit, refer to "Operating Instructions" on Pioneer DJ site.
- Please note that the screens and specifications of the software described in this guide as well as the external appearance and specifications of the hardware are currently under development and may differ from the final specifications.
- Please note that depending on the operating system version, web browser settings, etc., operation may differ from the procedures described in this manual.
- Please note that the language on the screens of the software describes in this guide may differ from the language on your screens.

This manual provides brief descriptions regarding the names of parts of this unit and the connections between this unit and peripherals.

For more detailed instructions on using this unit, see the Operating Instructions for this unit.

- For how to obtain the Operating Instructions for this unit, see *Viewing the Operating Instructions* on page 5.

<b>01 Before start.....</b>	<b>5</b>
Features .....	5
What's in the box .....	5
Acquiring the manual .....	5
Installing the software.....	5
About the AC adapter .....	7
<b>02 Part names .....</b>	<b>9</b>
Browser section .....	9
Deck section .....	9
Mixer section .....	10
Effect section.....	10
Rear panel .....	11
Front panel .....	11
<b>03 Connecting devices to this unit .....</b>	<b>12</b>
<b>04 Playing music by operating Serato DJ Pro .....</b>	<b>13</b>
Changing the settings.....	15
Quitting the system .....	15
<b>05 Additional information.....</b>	<b>16</b>
Troubleshooting.....	16
About trademarks and registered trademarks .....	16
Cautions on copyrights .....	16
Specifications.....	16

# Before start

## Features

This unit is an all-in-one DJ controller designed specifically for Serato Limited's DJ software "Serato DJ Pro." Performance interfaces, such as "PERFORMANCE PADS," "4-CHANNEL MIXER," etc., are arranged comfortably to control functions included in "Serato DJ Pro."

In addition, this unit is equipped with abundant input/output terminals to correspond to various DJ performances. This unit is also designed with a sense of quality to correspond to various scenes such as clubs and home parties.

## What's in the box

- AC adapter
  - Power plug
  - USB cable<sup>[1]</sup>
  - Operating Instructions (Quick Start Guide) (This document)
  - Serato DJ Pro EXPANSION PACK VOUCHER<sup>[2]</sup>
- [1] Only one USB cable is supplied on this unit. If you use two cables, use a USB cable supported to USB 2.0.
- [2] Note that the Serato DJ Pro EXPANSION PACK VOUCHER cannot be reissued. You will need to use the voucher code to activate the expansion pack. Make sure to store it in a safe place so that you do not lose it.

## Acquiring the manual

Various instructions are sometimes provided as files in PDF format. Adobe® Reader® must be installed in order to view PDF format files.

## Viewing the Operating Instructions

### 1 Launch a web browser on the PC/Mac and access the Pioneer DJ site below.

[pioneerdj.com](http://pioneerdj.com)

- To select your language, click the flag icon on the upper-right screen.

### 2 Point the cursor to [Support].

### 3 Click [Tutorials, manuals & documentation].

### 4 Click [DDJ-SX3] under [DJ CONTROLLER].

### 5 Select the language of the manual from the list.

Download the manual if needed.

## Downloading the Serato DJ Pro software manual

### 1 Access the Serato site.

<http://serato.com/>

### 2 Click [Serato DJ Pro] from [PRODUCT].

### 3 Click [DOWNLOAD SERATO DJ PRO].

### 4 Click [Manuals and Downloads].

### 5 Click the Serato DJ Pro software manual of the required language.

## Installing the software

### Before installing the software

The Serato DJ Pro software and driver software are not included. Access and download the software from the Pioneer DJ support site. [pioneerdj.com/support/](http://pioneerdj.com/support/)

- The user is responsible for preparing the PC/Mac, network devices and other elements of the Internet usage environment required for a connection to the Internet.

## Downloading the driver software

### 1 Launch a web browser on the PC/Mac and access the Pioneer DJ site.

[pioneerdj.com](http://pioneerdj.com)

- To select your language, click the flag icon on the upper-right screen.

### 2 Point the cursor to [Support].

### 3 Click [Software & firmware updates].

### 4 Click [DDJ-SX3] under [DJ CONTROLLER].

### 5 Click [Drivers].

### 6 Click [Download link], and then save the file.

## About the Serato DJ Pro software

Serato DJ Pro is a DJ software application by Serato Limited. DJ performances are possible by connecting the PC/Mac on which this software is installed to this unit.

### Minimum operating environment

Supported operating systems	CPU and required memory
Mac: macOS High Sierra 10.13/Sierra 10.12 (latest update), OS X 10.11 (latest update)	Intel® processor Core™ i5 and i7 1.07 GHz or better 4 GB or more of RAM
Windows® 10 / Windows® 8.1 / Windows® 7 (latest service pack)	32-bit version: Intel® processor Core™ i5 and i7 1.07 GHz or better 4 GB or more of RAM 64-bit version: Intel® processor Core™ i5 and i7 1.07 GHz or better 4 GB or more of RAM

### Others

USB port	A USB 2.0 port is required to connect the PC/Mac with this unit.
Display resolution	Resolution of 1 280 × 720 or greater
Internet connection	An Internet connection is required for registering the "Serato.com" user account and downloading the software.

- For information on the latest system requirements, compatibility, and supported operating systems, see "Software Info" of "DDJ-SX3" on the Pioneer DJ support site below. [pioneerdj.com/support/](http://pioneerdj.com/support/)
- As for operating systems, use the latest version and latest service pack.
- Operation is not guaranteed on all PC/Mac, even if all the required operating environment conditions indicated here are fulfilled.

- Depending on the power saving settings, etc. of the PC/Mac, the CPU and hard disk may not provide sufficient processing capabilities. For laptop PCs and Mac books in particular, make sure the computer is in the proper conditions to provide constant high performance (for example by keeping the AC power connected) when using Serato DJ Pro.
- Use of the Internet requires a separate contract with a provider offering Internet services and payment of provider fees.

## ❖ Obtaining the Serato DJ Pro software

### 1 Access the Serato web site.

<http://serato.com/>

### 2 Click [Serato DJ] under [DJ PRODUCTS].

The Serato DJ Pro download page is displayed.

- The download page is subject to change.

### 3 Click [DOWNLOAD SERATO DJ].

### 4 Create an account of "Serato.com".

- If you have already registered a user account on "Serato.com", proceed to step 6.
- If you have not completed registering your user account, do so following the procedure below.
  - Following the instructions on the screen, input your email address and the password to set, and then select the region in which you live.
  - If you check [E-mail me Serato newsletters], newsletters providing the latest information on Serato Limited products will be sent from Serato Limited.
  - Once user account registration is completed, you will receive an e-mail at the e-mail address you have input. Check the contents of the email sent from "Serato.com."
- Be careful not to forget the email address and password specified when you performed user registration. They will be required for updating the software.
- The personal information input when registering a new user account may be collected, processed and used based on the privacy policy on the Serato Limited website.

### 5 Click the link in the e-mail message sent from "Serato.com."

This takes you to the Serato DJ Pro download page.

### 6 Log in.

Input the email address and password you have registered to log in to "Serato.com."

### 7 Download the Serato DJ Pro software from the download page.

## ❖ Installation procedure (Windows)

Do not connect this unit and the PC until installation is completed.

- Log on as the user which was set as the administrator of the PC before installing.
- If any other programs are running on the PC, quit them.

### 1 Unzip the downloaded driver software (Pioneer\_DDJSX3\_X.XXX.).

### 2 Double-click [DDJ-SX3\_X.XXX.exe].

### 3 Proceed with installation according to the instructions on the screen.

If [Windows Security] appears on the screen while the installation is in progress, click [Install this driver software anyway] and continue with the installation.

When the installation program is completed, a completion message appears.

After installing the driver software, install the Serato DJ Pro software.

### 4 Unzip the downloaded Serato DJ Pro software file.

### 5 Double-click the unzipped software file to launch the installer.

### 6 Read the terms of the license agreement carefully, and if you agree, select [I agree to the license terms and conditions], then click [Install].

- If you do not agree to the contents of the license agreement, click [Close] to cancel installation.

The message of successful installation appears when installation is completed.

### 7 Click [Close] to quit the Serato DJ Pro installer.

## ❖ Installation procedure (Mac)

Do not connect this unit and the Mac until installation is completed.

- If any other programs are running on the Mac, quit them.

### 1 Unzip the downloaded driver software (DDJSX3\_M\_X.X.X.zip).

### 2 Double-click [DDJ-SX3\_M\_X.X.X.dmg].

### 3 Double-click [DDJ-SX3\_AudioDriver.pkg].

### 4 Follow the displayed instructions to install.

### 5 Unzip the downloaded Serato DJ Pro software file.

### 6 Double-click the unzipped software file to launch the installer.

### 7 Read the terms of the license agreement carefully, and if you agree, click [Agree].

- If you do not agree to the contents of the usage agreement, click [Disagree] to cancel installation.

### 8 Click [Install].

### 9 Follow the displayed instructions to install.

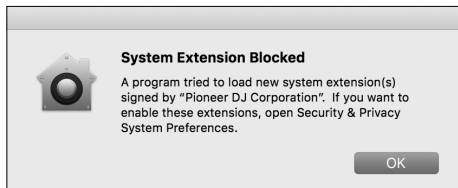
### 10 Click [Close] to quit the installer.

## About installing the driver software into macOS High Sierra 10.13

For macOS High Sierra 10.13, the new security function is added. When installing Pioneer DJ driver software into macOS High Sierra 10.13, the driver software authentication is required. Follow the procedures below.

Following procedures are necessary when newly installing the driver software into macOS High Sierra 10.13. If the driver software has been installed into macOS or OS X before updating to macOS High Sierra 10.13, following procedures are not necessary.

When installing Pioneer DJ driver software into macOS High Sierra 10.13, the following screen is displayed.

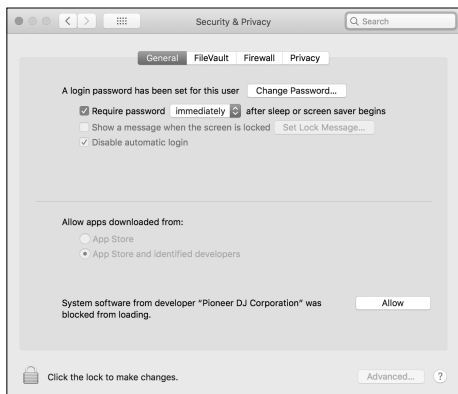


Click **[OK]**.

After permitting the driver software installation, the driver software installing will be completed.

**1 Open [System Preferences], and then click [Security & Privacy].**

**2 Check that [System software from developer "Pioneer DJ Corporation" was blocked from loading.] is displayed on the lower screen.**



This is shown for 30 minutes from starting the driver software installation.

If it is not shown, repeat the procedure of the driver software installation.

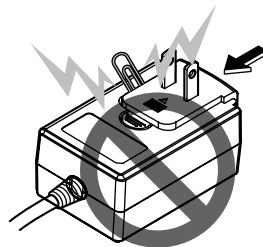
**3 Click [Allow] on the lower-right screen.**

**4 If the DJ equipment is connected to Mac, disconnect the USB cable, and then connect it again.**

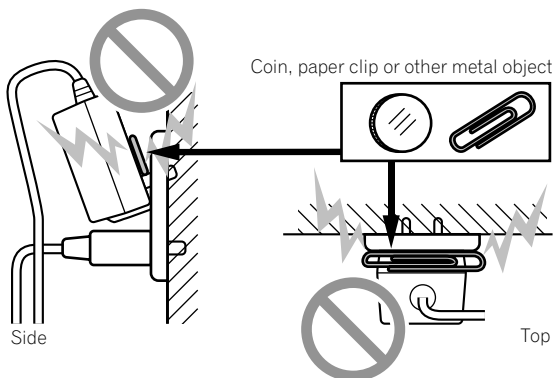
## About the AC adapter

### Safety instructions

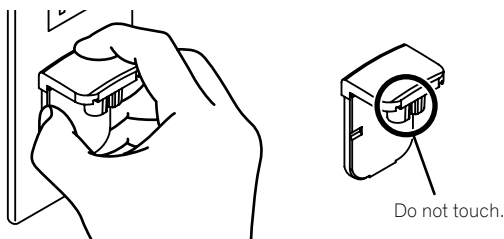
- Do not use this unit with a coin, paper clip or other metal object stuck between the AC adapter and power plug. Doing so could cause a short circuit, leading to fire or electric shock.



- When mounting the AC adapter on a wall outlet, make sure there is no space between the AC adapter and the wall outlet. Faulty contact or a coin, paper clip or other metal object getting stuck in the space could cause a short circuit, leading to fire or electric shock.



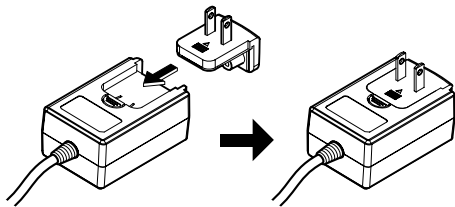
- The power plug could come detached from the AC adapter and remain in the power outlet if someone trips on the AC adapter's power cord or if something hits the AC adapter. If this happens, remove the power plug remaining in the outlet with dry hands, holding it as shown on the diagram below and without touching metal parts. Do not use any tools to remove it.



---

## Mounting the power plug

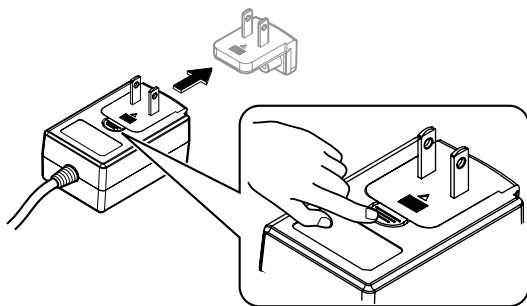
Slide the power plug along the guide rails in the AC adapter unit as shown on the diagram below, then press in until a click is heard.



### ❖ Removing the power plug

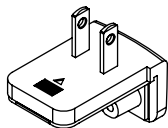
While pressing the [PUSH] button on the AC adapter unit, slide the power plug away from the adapter as shown on the diagram below to remove it.

Once the power plug is mounted, there is no need to remove it.



### ❖ Power plug

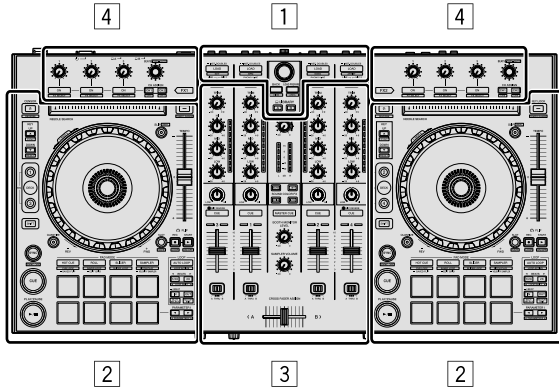
The power plug shown below is included with this product.





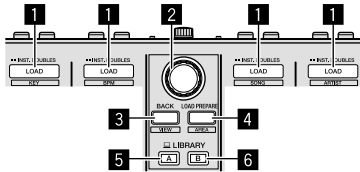
# Part names

For further details on each button and control, refer to "Part names and functions" section in the Operating Instructions.



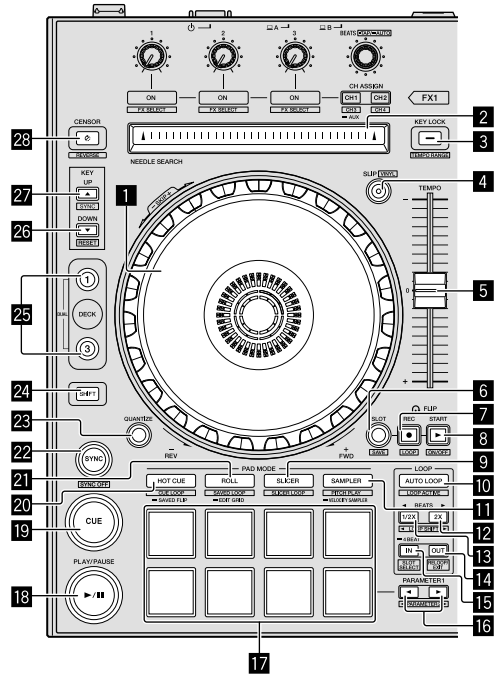
- 1 Browser section
- 2 Deck section
- 3 Mixer section
- 4 Effect section

## Browser section



- 1 LOAD buttons
- 2 Rotary selector
- 3 BACK button
- 4 LOAD PREPARE button
- 5 LIBRARY A button
- 6 LIBRARY B button

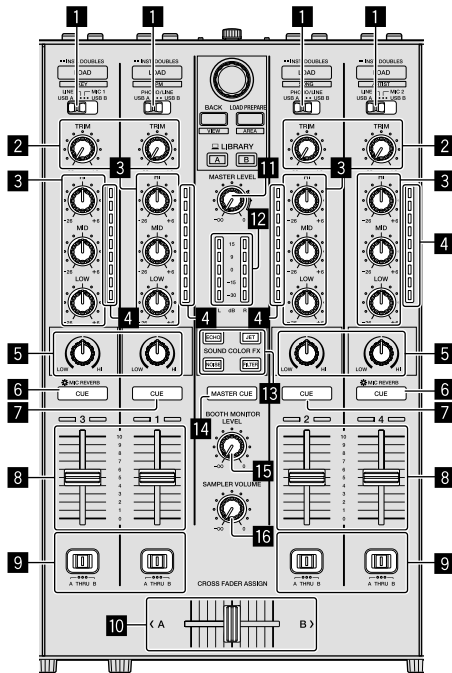
## Deck section



- 1 Jog wheel
- 2 NEEDLE SEARCH pad
- 3 KEY LOCK button
- 4 SLIP button
- 5 TEMPO slider
- 6 FLIP SLOT button
- 7 FLIP REC button
- 8 FLIP START button
- 9 SLICER mode button
- 10 AUTO LOOP button
- 11 SAMPLER mode button
- 12 LOOP 2X button
- 13 LOOP 1/2X button
- 14 LOOP OUT button
- 15 LOOP IN button
- 16 PARAMETER ◀ button, PARAMETER ▶ button
- 17 Performance pads
- 18 PLAY/PAUSE ▶/|| button
- 19 CUE button
- 20 HOT CUE mode button
- 21 ROLL mode button
- 22 SYNC button

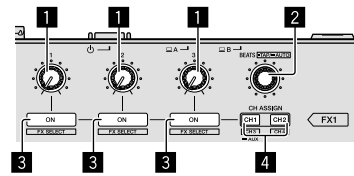
- 23 QUANTIZE button
- 24 SHIFT button
- 25 DECK button
- 26 KEY DOWN button
- 27 KEY UP button
- 28 CENSOR button

## Mixer section



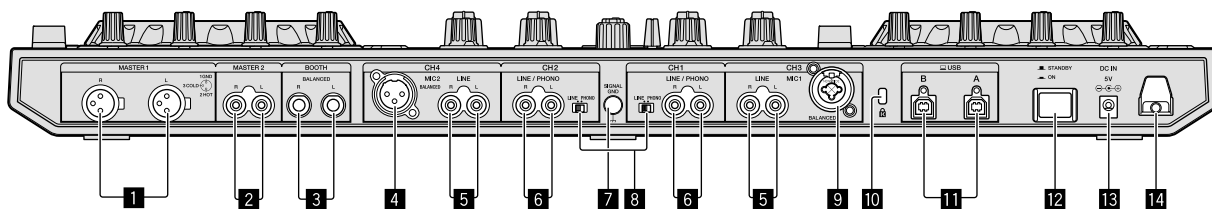
- 1 Input select switches
- 2 TRIM controls
- 3 EQ (HI, MID, LOW) controls
- 4 Channel Level Indicators
- 5 COLOR controls
- 6 Headphones CUE/MIC REVERB buttons
- 7 Headphones CUE buttons
- 8 Channel faders
- 9 CROSS FADER ASSIGN switches
- 10 Crossfader
- 11 MASTER LEVEL control
- 12 Master level indicator
- 13 SOUND COLOR FX buttons
- 14 MASTER CUE button
- 15 BOOTH MONITOR LEVEL control
- 16 SAMPLER VOLUME control

## Effect section



- 1 Effect parameter controls
- 2 FX BEATS control
- 3 Effect parameter buttons
- 4 CH ASSIGN CH1 button  
CH ASSIGN CH2 button

## Rear panel



### 1 MASTER OUT 1 terminals

Do not connect any terminal which provides phantom power to these terminals or a power cord of another product.

### 2 MASTER OUT 2 terminals

### 3 BOOTH OUT terminals

### 4 MIC2 terminal

### 5 LINE terminals

### 6 LINE/PHONO input terminals

### 7 SIGNAL GND terminal

### 8 LINE/PHONO switches

### 9 MIC1 terminal

### 10 Kensington security slot

### 11 USB terminals

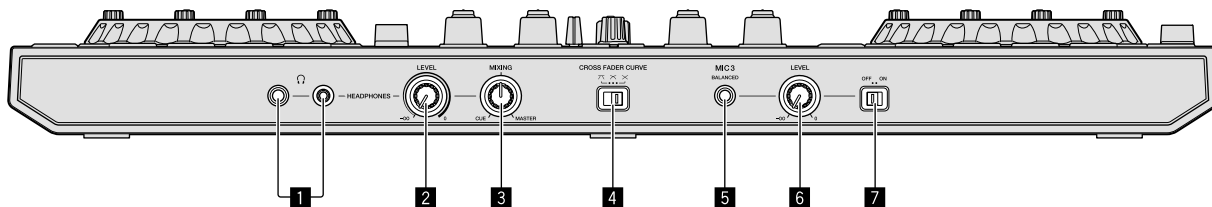
### 12 STANDBY/ON switch

This switches this unit's power between on and standby.

### 13 DC IN terminal

### 14 Cord hook

## Front panel



### 1 HEADPHONES jacks

### 2 HEADPHONES LEVEL control

### 3 HEADPHONES MIXING control

### 4 CROSS FADER CURVE switch

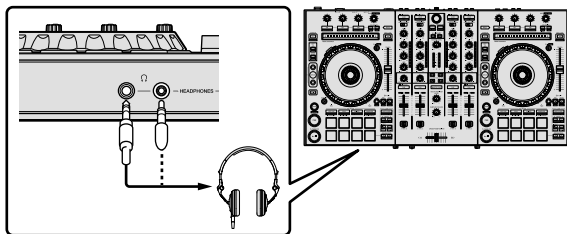
### 5 MIC3 terminal

### 6 MIC3 LEVEL control

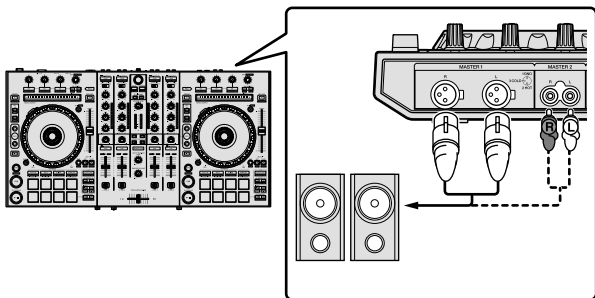
### 7 MIC3 ON/OFF switch

# Connecting devices to this unit

## 1 Connect headphones to one of the [HEADPHONES] terminals.

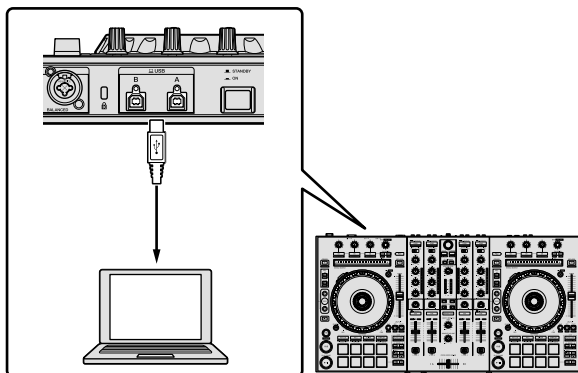


## 2 Connect powered speakers, a power amplifier, components, etc., to the [MASTER OUT 1] or [MASTER OUT 2] terminals.



- To output the sound from the [BOOTH OUT] terminals, connect speakers or other devices to the [BOOTH OUT] terminals.
- For details on connecting the input/output terminals, see the Operating Instructions.

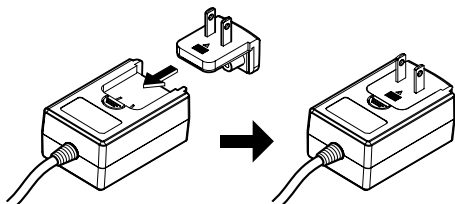
## 3 Connect this unit to your PC/Mac via a USB cable.



## 4 Turn on the PC/Mac.

## 5 Connect the power plug to the AC adapter.

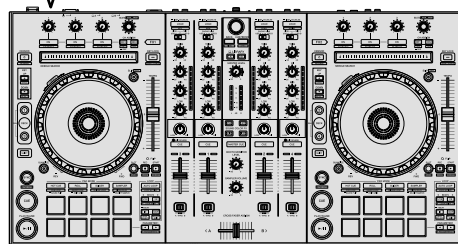
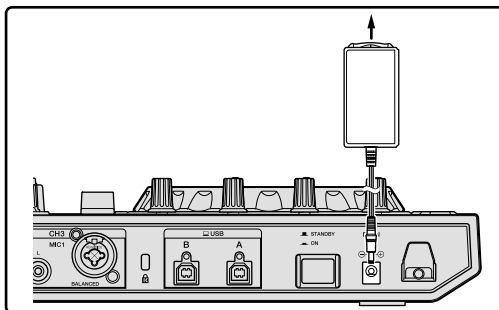
Slide the power plug into the AC adapter's guide rails as shown on the diagram and press in until a click is heard.



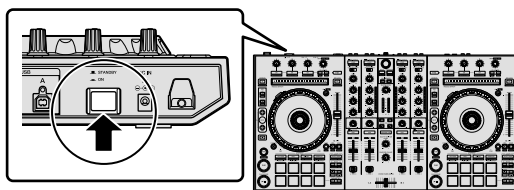
- For detailed cautions on the AC adapter, see "About the AC adapter" (p. 7).

- The shape of the plug differs according to the region in which the unit is sold.

## 6 Connect the AC adapter.



## 7 Press the [STANDBY/ON] switch on this unit's rear panel to turn on this unit.



- For Windows users  
The message [Installing device driver software] may appear when this unit is first connected to the PC or when it is connected to a different USB port on the PC. Wait a while until the message [Your devices are ready for use] appears.

## 8 Turn on the devices connected to the output terminals (powered speakers, power amplifier, components, etc.).

- When a microphone, DJ player or other external device is connected to input terminals, the power of that device also turns on.

# Playing music by operating Serato DJ Pro

## Launching Serato DJ Pro

This manual consists mainly of explanations of functions of this unit as hardware. For detailed instructions on operating the Serato DJ Pro software, see the Serato DJ Pro software manual.

### For Mac

In Finder, open the [Applications] folder, then click the [Serato DJ Pro] icon.

### For Windows 10

From the [Start] menu, click [Serato] > [Serato DJ Pro] icon.

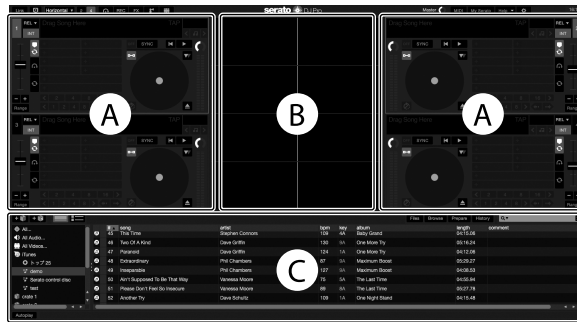
### For Windows 8.1

From [Apps view], click the [Serato DJ Pro] icon.

### For Windows 7

From the Windows [Start] menu, click the [Serato DJ] icon under [All Programs] > [Serato DJ Pro].

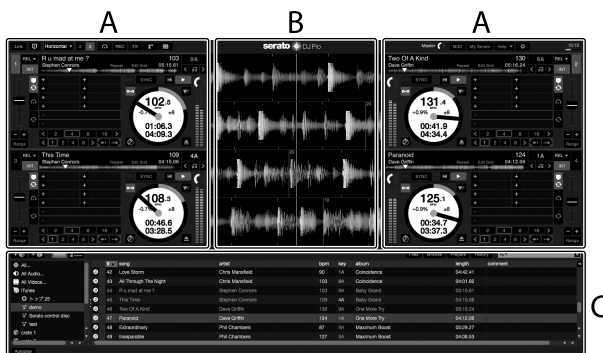
## PC/Mac screen directly after the Serato DJ Pro software is launched



- The [BUY/ACTIVATE] icon may appear on the right side of the screen displayed when Serato DJ Pro is launched for the first time, but for those using DDJ-SX3 there is no need to activate or purchase a license. You can purchase expansion packs such as DVS and use them as additional options.

## PC/Mac screen when a track is loaded in the Serato DJ Pro software

Click [Library] at the upper left of the PC/Mac screen, then select [Vertical] or [Horizontal] from the pull-down menu to switch the Serato DJ Pro screen.



### A Deck section

The track information (the name of the loaded track, artist name, BPM, etc.), the overall waveform and other information is displayed here.

### B Waveform display

The loaded track's waveform is displayed here.

### C Browser section

Crates in which tracks in the library or sets of multiple tracks are stored are displayed here.

## Importing tracks

The following describes the typical procedure for importing tracks.

- There are various ways to import tracks with the Serato DJ Pro software. For details, see the Serato DJ Pro software manual.
- If you are already using Serato Limited's DJ software (Scratch Live, ITCH, Serato DJ Intro, or Serato DJ Lite) and have already created track libraries, the track libraries you have previously created can be used as such.
- If you are using Serato DJ Intro and have already created track libraries, you may have to reanalyze the tracks.

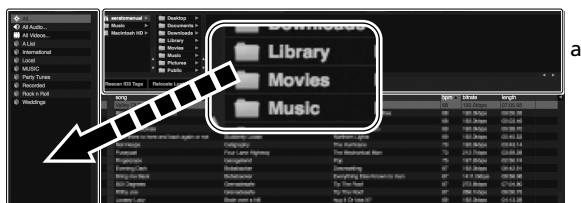
**1** Click the [Files] key on the Serato DJ Pro software screen to open the [Files] panel.

The contents of your PC/Mac or the peripheral connected to the PC/Mac are displayed in the [Files] panel.

**2** Click the folder on the [Files] panel containing the tracks you want to add to the library to select it.

**3** On the Serato DJ Pro software screen, drag and drop the selected folder to the crates panel.

A crate is created and the tracks are added to the library.

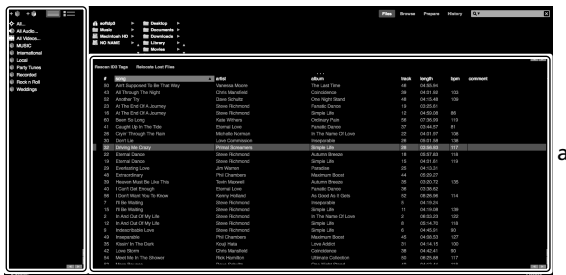


b

- a [Files] panel  
b Crates panel

**2** Press this unit's [BACK] button, move the cursor to the crates panel on the PC/Mac screen, then turn the rotary selector to select the crate, etc.

**3** Press the rotary selector, move the cursor to the library on the PC/Mac screen, then turn the rotary selector and select the track.



b

- a Library  
b Crates panel

**4** Press the [LOAD] button to load the selected track onto the deck.

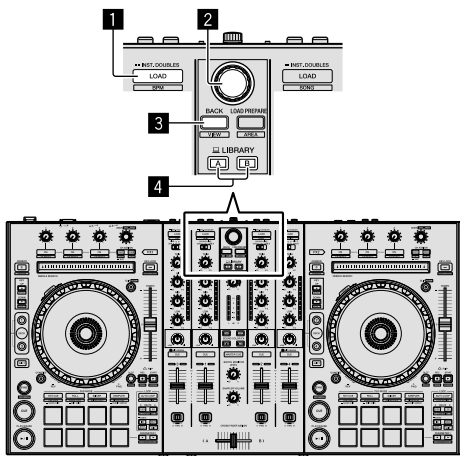
## Playing tracks and outputting the sound

The following describes the procedure for outputting the channel 1 sound as an example.

- Set the volume of the devices (power amplifier, powered speakers, etc.) connected to the [MASTER OUT 1] and [MASTER OUT 2] terminals to an appropriate level. Note that loud sound will be output if the volume is set too high.

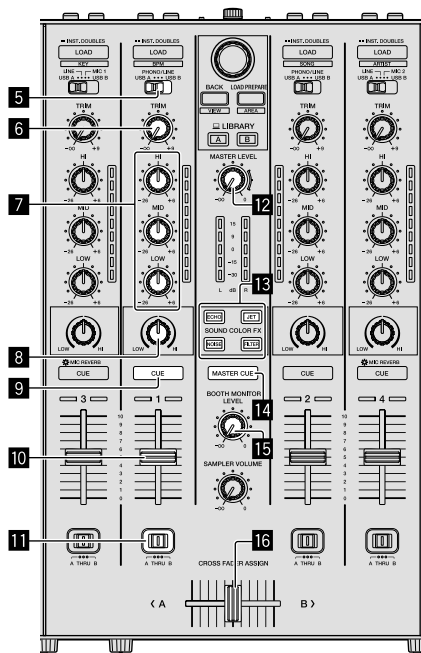
## Loading tracks and playing them

The following describes the procedure for loading tracks into deck [1] as an example.



- 1** LOAD button  
**2** Rotary selector  
**3** BACK button  
**4** LIBRARY A button  
LIBRARY B button

**1** Press the [LIBRARY A] button or the [LIBRARY B] button and select the PC/Mac.



- 5** Input select switch  
**6** TRIM control

- 7 EQ (HI, MID, LOW) controls
- 8 COLOR control
- 9 Headphones CUE button
- 10 Channel fader
- 11 CROSS FADER ASSIGN switch
- 12 MASTER LEVEL control
- 13 SOUND COLOR FX buttons
- 14 MASTER CUE button
- 15 BOOTH MONITOR LEVEL control
- 16 Crossfader
- 17 HEADPHONES LEVEL control
- 18 HEADPHONES MIXING control
- 19 CROSS FADER CURVE control

1 Set the positions of the controls, etc., as shown below.

Names of controls, etc.	Position
MASTER LEVEL control	Turned fully counterclockwise
TRIM control	Turned fully counterclockwise
EQ (HI, MID, LOW) controls	Center
COLOR control	Center
Channel fader	Moved forward
CROSS FADER ASSIGN switch	[THRU] position
Input select switch	[USB A] or [USB B] position

2 Press the [▶/||] button to play the track.



3 Move the channel fader away from you.

4 Turn the [TRIM] control.

Adjust [TRIM] so that the orange indicator on the channel level indicator lights at the peak level.

5 Turn the [MASTER LEVEL] control to adjust the audio level of the speakers.

Adjust the sound level output from the [MASTER OUT 1] and [MASTER OUT 2] terminals to an appropriate level.

## Monitoring sound with headphones

Set the positions of the controls, etc., as shown below.

Names of controls, etc.	Position
HEADPHONES MIXING control	Center
HEADPHONES LEVEL control	Turned fully counterclockwise

1 Press the headphones [CUE] button for the channel 1.

2 Turn the [HEADPHONES LEVEL] control.

Adjust the sound level output from the headphones to an appropriate level.



### Note

This unit and the Serato DJ Pro software include a variety of functions enabling individualistic DJ performances. For details on the respective functions, see the operating instructions and the Serato DJ Pro software manual.

- This unit's operating instructions can be downloaded from the Pioneer DJ support site. For details, see *Acquiring the manual* (p. 5).
- The Serato DJ Pro software manual can be downloaded from "Serato.com". For details, see *Downloading the Serato DJ Pro software manual* (p. 5).

## Changing the settings

For details to change settings on this unit, see the "Changing the settings" section in the Operating Instructions.

## Quitting the system

1 Quit Serato DJ Pro.

When the software is closed, a message for confirming that you want to close it appears on the PC/Mac screen. Click [Yes] to close.

2 Press the [⏻ STANDBY/ON] switch on this unit's rear panel to set this unit to standby.

3 Disconnect the USB cable from your PC/Mac.

# Additional information

## Troubleshooting

- Incorrect operation is often mistaken for trouble or malfunction. If you think that there is something wrong with this component, check the items in the "Troubleshooting" section of this unit's operating instructions and the [FAQ] for the [DDJ-SX3] on the Pioneer DJ support site.  
pioneerdj.com/support/  
Sometimes the problem may lie in another component. Inspect the other components and electrical appliances being used. If the problem cannot be rectified, ask your nearest Pioneer authorized service center or your dealer to carry out repair work.
- This unit may not operate properly due to static electricity or other external influences. In this case, proper operation may be restored by turning the power off, waiting 1 minute, then turning the power back on.

## About trademarks and registered trademarks

- Pioneer DJ is a trademark of PIONEER CORPORATION, and is used under license.
- Windows is a registered trademark of Microsoft Corporation in the United States and other countries.
- macOS, OS X and Finder are trademarks of Apple Inc., registered in the U.S. and other countries.
- Intel and Intel Core are trademarks of Intel Corporation in the U.S. and/or other countries.
- Adobe and Reader are trademarks of Adobe Systems Incorporated in the U.S. and other countries.
- Serato DJ Pro is a registered trademark of Serato Limited.

The names of companies and products mentioned herein are the trademarks of their respective owners.

## Cautions on copyrights

Recordings you have made are for your personal enjoyment and according to copyright laws may not be used without the consent of the copyright holder.

- Music recorded from CDs, etc., is protected by the copyright laws of individual countries and by international treaties. It is the full responsibility of the person who has recorded the music to ensure that it is used legally.
- When handling music downloaded from the Internet, etc., it is the full responsibility of the person who has downloaded the music to ensure that it is used in accordance with the contract concluded with the download site.

## Specifications

### AC adapter

Power ..... AC 100 V to 240 V, 50 Hz/60 Hz  
Rated current ..... 800 mA  
Rated output ..... DC 5 V, 3 A

### General – Main Unit

Main unit weight ..... 6.1 kg (13.4 lb)  
Max. external dimensions (W × D × H)  
..... 664.0 mm × 354.4 mm × 70.4 mm (26.1 in. × 14.0 in. × 2.8 in.)  
Tolerable operating temperature ..... +5 °C to +35 °C (+41 °F to +95 °F)  
Tolerable operating humidity ..... 5 % to 85 % (no condensation)

### Audio Section

Sampling rate ..... 44.1 kHz

A/D, D/A converter .....	24 bits
Frequency characteristic	
<b>USB, LINE, MIC</b> .....	20 Hz to 20 kHz
S/N ratio (rated output, A-WEIGHTED)	
<b>USB</b> .....	107 dB
<b>LINE</b> .....	96 dB
<b>PHONO</b> .....	87 dB
<b>MIC</b> .....	80 dB
Total harmonic distortion (20 Hz to 20 kHzBW)	
<b>USB</b> .....	0.003 %
<b>LINE</b> .....	0.005 %
Standard input level / Input impedance	
<b>LINE</b> .....	-12 dBu/47 kΩ
<b>PHONO</b> .....	-52 dBu/47 kΩ
<b>MIC</b> .....	-57 dBu/3 kΩ
Standard output level / Load impedance / Output impedance	
<b>MASTER OUT 1</b> .....	+6 dBu/10 kΩ/390 Ω
<b>MASTER OUT 2</b> .....	+2 dBu/10 kΩ/1 kΩ
<b>BOOTH OUT</b> .....	+6 dBu/10 kΩ/390 Ω
<b>PHONE</b> .....	+4 dBu/32 Ω/32 Ω
Rated output level / Load impedance	
<b>MASTER OUT 1</b> .....	24 dBu/10 kΩ
<b>MASTER OUT 2</b> .....	20 dBu/10 kΩ
<b>BOOTH OUT</b> .....	24 dBu/10 kΩ
Crosstalk	
<b>LINE</b> .....	82 dB
Channel equalizer characteristic	
<b>HI</b> .....	-26 dB to +6 dB (13 kHz)
<b>MID</b> .....	-26 dB to +6 dB (1 kHz)
<b>LOW</b> .....	-26 dB to +6 dB (70 Hz)
<b>Input / Output terminals</b>	
<b>LINE</b> input terminal	
RCA pin jack .....	2 sets
<b>LINE/PHONO</b> input terminals	
RCA pin jack .....	2 sets
<b>MIC1</b> terminal	
XLR connector/phone jack (Ø 6.3 mm) .....	1 set
<b>MIC2</b> terminal	
XLR connector .....	1 set
<b>MIC3</b> terminal	
Phone jack (Ø 6.3 mm) .....	1 set
<b>MASTER OUT 1</b> output terminal	
XLR connector .....	1 set
<b>MASTER OUT 2</b> output terminal	
RCA pin jacks .....	1 set
<b>BOOTH OUT</b> output terminal	
Phone jack (Ø 6.3 mm) .....	1 set
<b>HEADPHONES</b> output terminal	
Stereo phone jack (Ø 6.3 mm) .....	1 set
Stereo mini phone jack (Ø 3.5 mm) .....	1 set
<b>USB</b> terminal	
B type .....	2 sets

- For improvement purposes, specifications and design of this unit and the included software are subject to change without notice.
- © 2018 Pioneer DJ Corporation. All rights reserved.



# Pioneer Dj

Pioneer DJ Americas, Inc.  
**LIMITED WARRANTY**  
WARRANTY VALID ONLY IN THE U.S.A. AND CANADA

## WARRANTY

Pioneer DJ Americas, Inc. (PDJA) warrants that products distributed by PDJA in the U.S.A. and Canada that fail to function properly under normal use due to a manufacturing defect when installed and operated according to the owner's manual enclosed with the unit will be repaired or replaced with a unit of comparable value, at the option of PDJA, without charge to you for parts or actual repair work. Parts supplied under this warranty may be new or rebuilt at the option of PDJA.

**THIS LIMITED WARRANTY APPLIES TO THE ORIGINAL OR ANY SUBSEQUENT OWNER OF THIS PIONEER DJ PRODUCT DURING THE WARRANTY PERIOD PROVIDED THE PRODUCT WAS PURCHASED FROM AN AUTHORIZED PIONEER DJ DISTRIBUTOR/DEALER IN THE U.S.A. OR CANADA. YOU WILL BE REQUIRED TO PROVIDE A SALES RECEIPT OR OTHER VALID PROOF OF PURCHASE SHOWING THE DATE OF ORIGINAL PURCHASE OR, IF RENTED, YOUR RENTAL CONTRACT SHOWING THE PLACE AND DATE OF FIRST RENTAL. IN THE EVENT SERVICE IS REQUIRED, THE PRODUCT MUST BE DELIVERED WITHIN THE WARRANTY PERIOD, TRANSPORTATION PREPAID, ONLY FROM WITHIN THE U.S.A. AS EXPLAINED IN THIS DOCUMENT. YOU WILL BE RESPONSIBLE FOR REMOVAL AND INSTALLATION OF THE PRODUCT. PDJA WILL PAY TO RETURN THE REPAIRED OR REPLACEMENT PRODUCT TO YOU WITHIN THE U.S.A.**

## PRODUCT WARRANTY PERIOD

	Parts	Labor
DJ Audio and Video .....	1 Year	1 Year

The warranty period for retail customers who rent the product commences upon the date product is first put into use (a) during the rental period or (b) retail sale, whichever occurs first.

## WHAT IS NOT COVERED

IF THIS PRODUCT WAS PURCHASED FROM AN UNAUTHORIZED DISTRIBUTOR, THERE ARE NO WARRANTIES, EXPRESS OR IMPLIED, INCLUDING THE IMPLIED WARRANTY OF MERCHANTABILITY AND THE IMPLIED WARRANTY OF FITNESS FOR A PARTICULAR PURPOSE AND THIS PRODUCT IS SOLD STRICTLY "AS IS" AND "WITH ALL FAULTS".

PIONEER DJ SHALL NOT BE LIABLE FOR ANY CONSEQUENTIAL AND/OR INCIDENTAL DAMAGES.

THIS WARRANTY DOES NOT APPLY IF THE PRODUCT HAS BEEN SUBJECTED TO POWER IN EXCESS OF ITS PUBLISHED POWER RATING.

THIS WARRANTY DOES NOT COVER THE CABINET OR ANY APPEARANCE ITEM, USER ATTACHED ANTENNA, ANY DAMAGE TO RECORDS OR RECORDING TAPES OR DISCS, ANY DAMAGE TO THE PRODUCT RESULTING FROM ALTERATIONS, MODIFICATIONS NOT AUTHORIZED IN WRITING BY PIONEER DJ, ACCIDENT, MISUSE OR ABUSE, DAMAGE DUE TO LIGHTNING OR TO POWER SURGES, SUBSEQUENT DAMAGE FROM LEAKING, DAMAGE FROM INOPERATIVE BATTERIES, OR THE USE OF BATTERIES NOT CONFORMING TO THOSE SPECIFIED IN THE OWNER'S MANUAL.

THIS WARRANTY DOES NOT COVER THE COST OF PARTS OR LABOR WHICH WOULD BE OTHERWISE PROVIDED WITHOUT CHARGE UNDER THIS WARRANTY OBTAINED FROM ANY SOURCE OTHER THAN A PIONEER DJ AUTHORIZED SERVICE COMPANY OR OTHER DESIGNATED LOCATION. THIS WARRANTY DOES NOT COVER DEFECTS OR DAMAGE CAUSED BY THE USE OF UNAUTHORIZED PARTS OR LABOR OR FROM IMPROPER MAINTENANCE.

ALTERED, DEFACED, OR REMOVED SERIAL NUMBERS VOID THIS ENTIRE WARRANTY

## NO OTHER WARRANTIES

PIONEER DJ LIMITS ITS OBLIGATIONS UNDER ANY IMPLIED WARRANTIES INCLUDING, BUT NOT LIMITED TO, THE IMPLIED WARRANTIES OF MERCHANTABILITY AND FITNESS FOR A PARTICULAR PURPOSE, TO A PERIOD NOT TO EXCEED THE WARRANTY PERIOD. NO WARRANTIES SHALL APPLY AFTER THE WARRANTY PERIOD. SOME STATES DO NOT ALLOW LIMITATIONS ON HOW LONG AN IMPLIED WARRANTY LASTS AND SOME STATES DO NOT ALLOW THE EXCLUSIONS OR LIMITATIONS OF INCIDENTAL OR CONSEQUENTIAL DAMAGES, SO THE ABOVE LIMITATIONS OR EXCLUSIONS MAY NOT APPLY TO YOU. THIS WARRANTY GIVES YOU SPECIFIC LEGAL RIGHTS AND YOU MAY HAVE OTHER RIGHTS WHICH MAY VARY FROM STATE TO STATE.

## TO OBTAIN SERVICE

PDJA has appointed a number of Authorized Service Companies throughout the U.S.A. and Canada should your product require service. To receive warranty service you need to present your sales receipt or, if rented, your rental contract showing place and date of original owner's transaction. If shipping the unit you will need to package it carefully and send it, transportation prepaid by a traceable, insured method, to an Authorized Service Company. Package the product using adequate padding material to prevent damage in transit. The original container is ideal for this purpose. Include your name, address and telephone number where you can be reached during business hours.

On all complaints and concerns in the U.S.A. and Canada call Customer Support at 1-800-872-4159.

For hook-up and operation of your unit or to locate an Authorized Service Company, please call or write:  
CUSTOMER SUPPORT  
PIONEER ELECTRONICS (USA) INC.  
P.O. BOX 1720  
LONG BEACH, CALIFORNIA 90801  
1-800-872-4159  
<http://www.pioneerelectronics.com>

## DISPUTE RESOLUTION

Following our response to any initial request to Customer Support, should a dispute arise between you and Pioneer DJ, Pioneer DJ makes available its Complaint Resolution Program to resolve the dispute. The Complaint Resolution Program is available to you without charge. You are required to use the Complaint Resolution Program before you exercise any rights under, or seek any remedies, created by Title I of the Magnuson-Moss Warranty-Federal Trade Commission Improvement Act, 15 U.S.C. 2301 *et seq.*

To use the Complaint Resolution Program call 1-800-872-4159 and explain to the customer service representative the problem you are experiencing, steps you have taken to have the product repaired during the warranty period and the name of the authorized Distributor/Dealer from whom the Pioneer DJ product was purchased. After the complaint has been explained to the representative, a resolution number will be issued. Within 40 days of receiving your complaint, Pioneer DJ will investigate the dispute and will either: (1) respond to your complaint in writing informing you what action Pioneer DJ will take, and in what time period, to resolve the dispute; or (2) respond to your complaint in writing informing you why it will not take any action.

## RECORD THE PLACE AND DATE OF PURCHASE FOR FUTURE REFERENCE

Model No. \_\_\_\_\_ Serial No. \_\_\_\_\_ Purchase Date \_\_\_\_\_

Purchased From \_\_\_\_\_

KEEP THIS INFORMATION AND YOUR SALES RECEIPT IN A SAFE PLACE

UCP0515





To register your product, find the nearest authorized service location, to purchase replacement parts, operating instructions, or accessories, please go to one of following URLs :

Pour enregistrer votre produit, trouver le service après-vente agréé le plus proche et pour acheter des pièces de rechange, des modes d'emploi ou des accessoires, reportez-vous aux URL suivantes :

**In the USA/Aux Etats-Unis or In Canada/Aux Canada**  
**<http://www.pioneerelectronics.com>**

S018\_C1\_EnFr\_PSV

© 2018 Pioneer DJ Corporation.  
All rights reserved.

**Pioneer DJ Corporation**

6F, Yokohama i-Mark Place, 4-4-5 Minatomirai, Nishi-ku, Yokohama, Kanagawa 220-0012 JAPAN

**Pioneer DJ 株式会社**

〒220-0012 神奈川県横浜市西区みなとみらい4丁目4番5号 横浜アイマークプレイス6階

**Корпорация Пайонир Диджей**

6F, Йокогама i-Mark Place, 4-4-5 Минатомирай, Ниси-ку, Йокогама, Канагава 220-0012 ЯПОНИЯ

**Pioneer DJ Europe Limited**

Anteros Building, Odyssey Business Park, West End Road, South Ruislip, Middlesex, HA4 6QQ, U.K. TEL: +44-203-7617-220

**Pioneer DJ Americas, Inc.**

2050 W. 190th Street, Suite 109, Torrance, CA 90504, U.S.A. TEL: +1 (424) 488-0480

**PIONEER ELECTRONICS ASIACENTRE PTE. LTD.**

2 Jalan Kilang Barat, #07-01, Singapore 159346 TEL: +65-6378-7888

**PIONEER ELECTRONICS AUSTRALIA PTY. LTD.**

5 Arco Lane, Heatherton, Victoria, 3202, Australia, TEL: +61-3-9586-6300

**PIONEER ELECTRONICS (THAILAND) CO., LTD.**

17th Fl., KPN Tower, 719 Rama 9 Road, Bangkapi, Huaykwang, Bangkok 10310  
TEL: +66-2-717-0777

**PIONEER TECHNOLOGY (MALAYSIA) SDN. BHD**

16th Floor, Menara Uni. Asia 1008 Jalan Sultan Ismail 50250 Kuala Lumpur  
TEL: +60-3-2697-2920

**先鋒股份有限公司**

台灣台北市內湖區瑞光路 407 號 8 樓 TEL: +886-(0)2-2657-3588

**先鋒電子(香港)有限公司**

香港九龍長沙灣道 909 號 5 樓 TEL: +852-2848-6488

**PIONEER ELECTRONICS DE MEXICO S.A. DE C.V.**

Blvd.Manuel Avila Camacho 138 10 piso Col.Lomas de Chapultepec, Mexico, D.F. 11000 TEL: +52-55-9178-4270

**PIONEER INDIA ELECTRONICS PRIVATE LTD.**

216, Second Floor, Time Tower, M.G. Road, Sector 28, Gurgaon 122001, Haryana, India TEL: +91-124-463-6100

PDJ\_001\_all