

SECTION 6

EXPLODED VIEWS & REPLACEMENT PARTS LIST

Model No. : **AU-VEXT1G/MC**

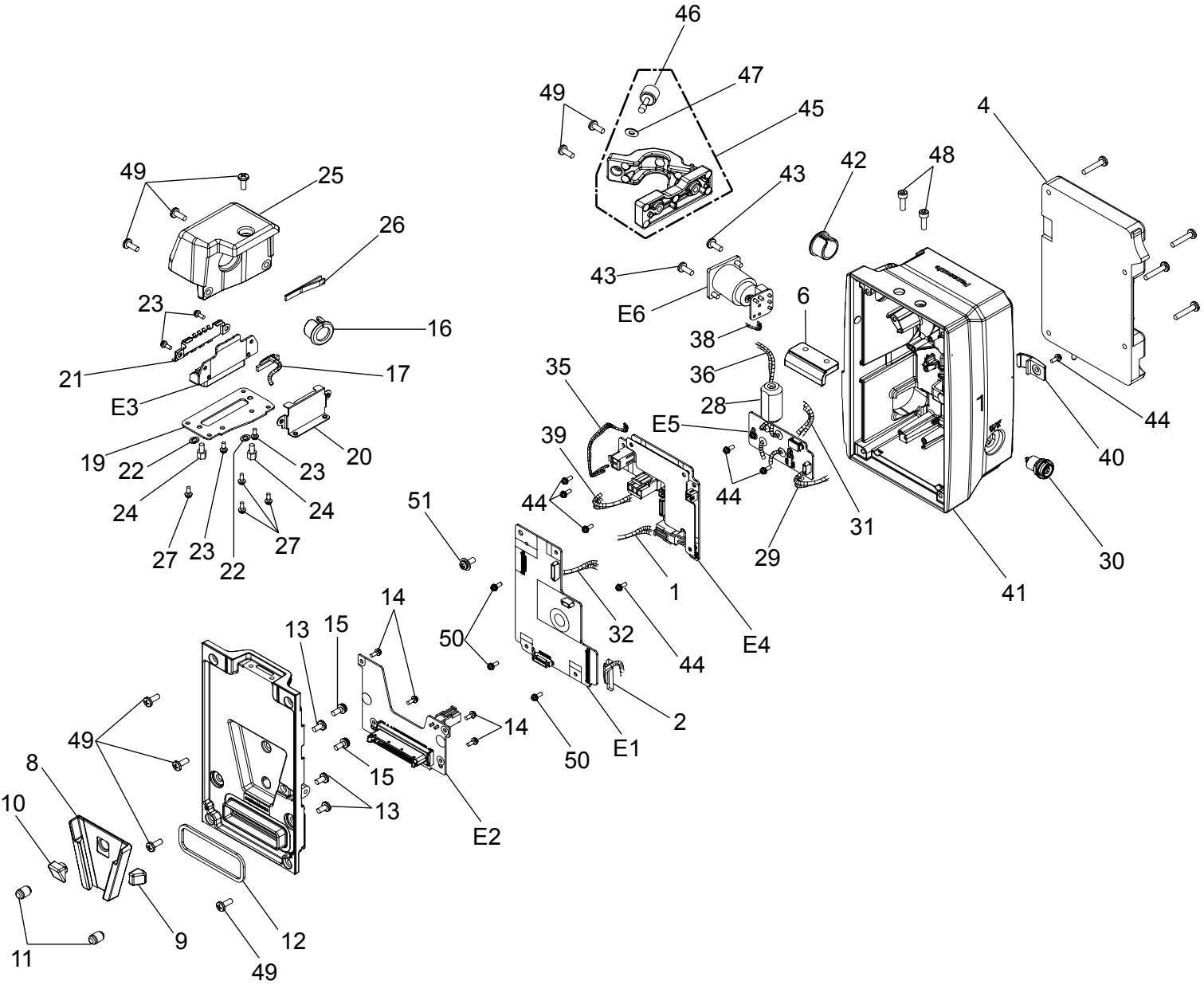
Note:

1. *Be sure to make your orders of replacement parts according to this list.
2. Unless otherwise specified, all resistors are in OHMS, K=1,000 OHMS, all capacitors are in MICROFARADS (μ F) P= μ μ F.
3. The P.C.Board unit marked with "■" shown below the main assembled parts.
4. The parts marked with ⊕ on the exploded view show the electric parts.
5. IMPORTANT SAFETY NOTICE
Components identified with the mark Δ have the special characteristics for safety When replacing any of these components, use only the same type.
6. The marking (RTL) indicates the retention time is limited for this item.
After the discontinuation of this assembly in production, it will no longer be available.
7. "M" in Remark column indicates needed in the periodical maintenance.

CONTENTS

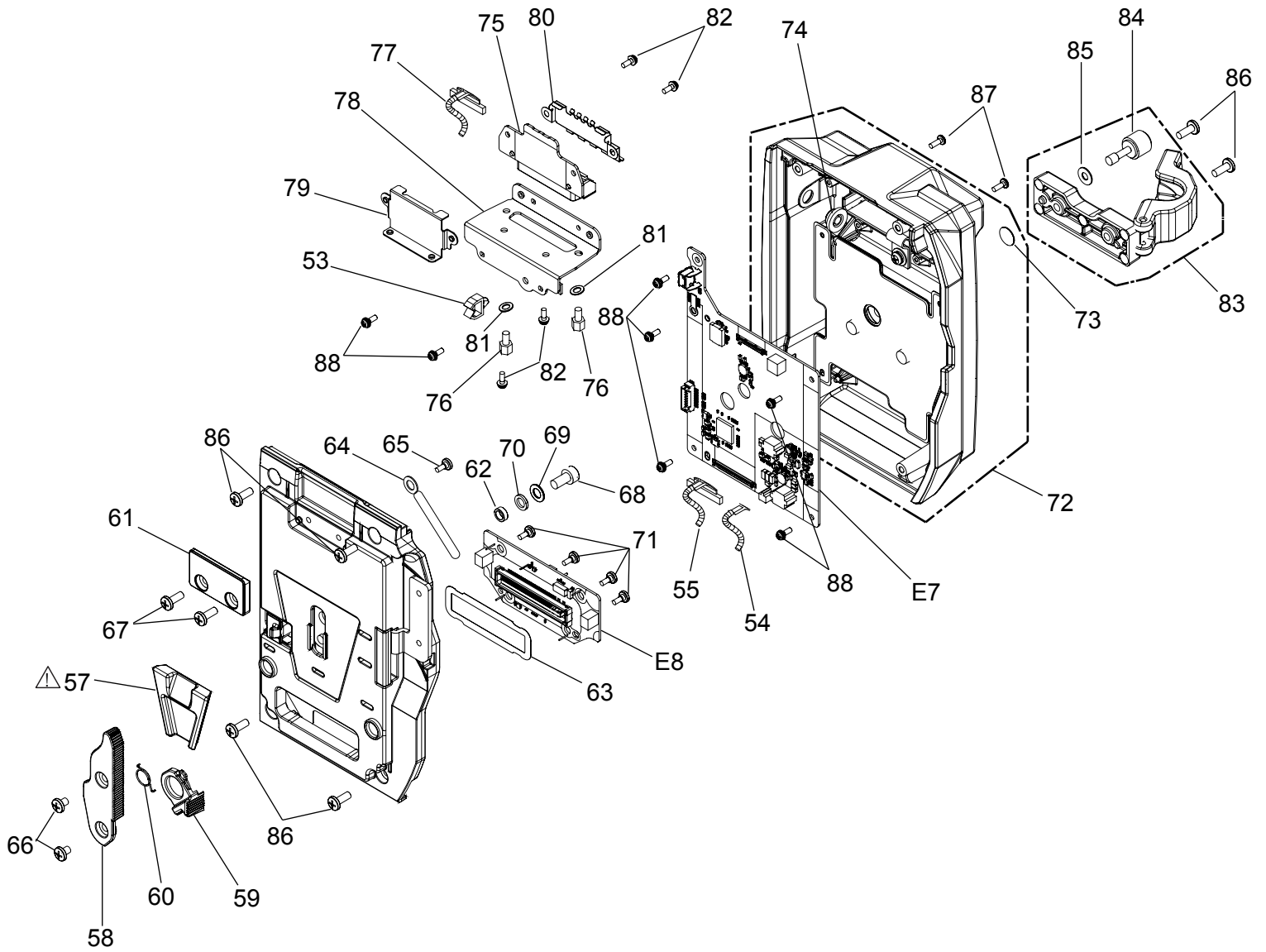
CAMERA MODULE	SPL -1
REC MODULE	SPL -2
PARTS LIST	SPL -3

CAMERA MODULE



REC MODULE

Components identified with the mark \triangle have the special characteristics for safety. When replacing any of these components, use only the same type.



Ref. No.	Part No.	Part Name & Description	Pcs	Remarks	Ref. No.	Part No.	Part Name & Description	Pcs	Remarks
1	VEE1Q40	CABLE	1	(POWER IF-INT CN)	△ 57	VGM2446	CAMERA V EDGE	1	
2	VEE1R35	CAM INT CN-CAM IF WIRE U	1		58	VGU0R71	LEVER RELEASE KNOB	1	
4	VJF1347A	ANTON BRACKET	1		59	VGU0R72	LEVER LOCK KNOB	1	
6	VMD7156	LOCK ANGLE	1		60	VMB4831	LOCK KNOB SPRING	1	
8	VGM2434	RECORDER LOCK BASE	1		61	VMD7154-Q	DOCKING LOCK PLATE	1	
9	VMD7157-Q	KICKER RELEASE ANGLE B	1		62	VMS8454	V EDGE ATTACH COLLAR	1	
10	VMD7158	V EDGE GUIDE	1		63	VMT2413	INT CN CAM SHEET	1	
11	VMS8451	GUIDE PIN	2		64	VJF1596	COATING CLIP	1	
12	VMT2394	INT CN WATERPROOF PACKING	1		65	XYN2+J6FJ	SCREW	1	
13	XSB3+6FJK	SCREW	3		66	XSB3+4FJK	SCREW	2	
14	XYN2+J6FJ	SCREW	4		67	XSB3+8FJK	SCREW	2	
15	XYN3+J8FJ	SCREW	2		68	XVE4B8FJK	SCREW	1	
16	OCB562	BUSHING	1		69	XWA4BFJK	WASHER	1	
17	VEE1R23	CAM-IF CAM EXT CN WIRE U	1		70	XWE4FJK	WASHER	1	
19	VMPOL40	EXT CN PLATE CAM	1		71	VHD2105	STEP SCREW	4	
20	VSC6564	CON EARTH BOTTOM	1		72	VYK6U77	REC CASE U	1	
21	VSC6565	CON EARTH TOP	1		73	VGf1182	HOOK HOLE COVER	1	
22	XWE3VW	WASHER	2		74	VGU9695	RUBBER BUTTON (B)	1	
23	XYN2+J6FJ	SCREW	4		75	VEP002U8A	EXT CN PB	1	
24	K1YE01000009	DSUB CONNECTOR NUT	2		76	K1YE01000009	DSUB CONNECTOR NUT	2	
25	VGM2558	CN CASE	1		77	VEE1R23	WIRE U	1	(REC IF-REC EXT CN)
26	VMT2470	WATERPROOF CUSHION	1		78	VMPOL28	EXT CN PLATE REC	1	
27	XYN2+J6FJ	SCREW	4		79	VSC6564	CON EARTH BOTTOM	1	
28	JOKG00000001	FILTER FOR EMI/EMC (CORES)	1		80	VSC6565	CON EARTH TOP	1	
29	VEE1Q38	CABLE	1	(CAM IF-BATT IF)	81	XWE3VW	WASHER	2	
30	VEE1Q63	DC_OUT-CAM_POWER WIRE U	1		82	XYN2+J6FJ	SCREW	4	
31	VEE1Q81	CABLE	1	(BATT IF-ANTON POWER)	83	VYQ9082	CABLE CLAMPER U	1	
32	VEE1R24	CABLE	1	(CAM IF-POWER IF)	84	VHD1528	MIC SCREW	1	
35	VEE1R28	CABLE	1	(POW IF-BATT IF)	85	XWGV35D8G	POLISLIDER	1	
36	VEE1R29	CABLE	1	(BATT IF- ANTON)	86	XSB3+8FJK	SCREW	6	
38	VEE1R26	CABLE 2P	1	(DC INPUT-POWER IF)	87	VHD2585	SCREW	2	
39	VEE1R27	CABLE 3P	1	(DC INPUT-POWER IF)	88	XYN2+J6FJ	SCREW	7	
40	VJF1584	CABLE CLAMPER	1		89	VPG3V99	PACKING CASE G IN	1	
41	VYK6U76	CAM CASE 1U	1		90	VPG3W00	PACKING CASE G OUT	1	
42	OCB562	BUSHING	1		91	VPN7847	CUSHION TOP/BOTTOM	2	
43	XSN26+6FN	SCREW	2		92	VPN7848	CUSHION MIDDLE	1	
44	XYN2+J6FJ	SCREW	7						
45	VYQ9082	CABLE CLAMPER U	1						
46	VHD1528	MIC SCREW	1						
47	XWGV35D8G	POLISLIDER	1		E1	VEP002U4A	CAM IF P. C. BOARD	1	
48	VHD1793	HEXAGON SOCKET HEAD CAP SCREW	2	M3X10	E2	VEP002U6A	CAM INT CN P. C. BOARD	1	
49	XSB3+8FJK	SCREW	9		E3	VEP002U8A	CAM EXT CN P. C. BOARD	1	
50	XYN2+J6FJ	SCREW	3		E4	VEP01A96A	POWER IF P. C. BOARD	1	
51	XYN3+8FJ	SCREW	1		E5	VEP01A97A	BATT IF P. C. BOARD	1	
53	VJF1567	MINI CLAMP	1		E6	VEP01A98A	DC INPUT P. C. BOARD	1	
54	VEE1R25	CABLE	1	(REC INT CN-REC IF)	E7	VEP002U5A	REC IF P. C. BOARD	1	
55	VEE1R35	CABLE WIRE U	1	(REC INT CN-REC IF)	E8	VEP002U7A	REC INT CN P. C. BOARD	1	

Ref. No.	Part No.	Part Name & Description	Pcs	Remarks	Ref. No.	Part No.	Part Name & Description	Pcs	Remarks
■ E1	VEP002U4A	CAM IF P. C. BOARD	1		■ E4	VEP01A96A	POWER IF P. C. BOARD	1	
■ E2	VEP002U6A	CAM INT CN P. C. BOARD	1		△ F101	K5H183AA0013	FUSE		
■ E3	VEP002U8A	CAM EXT CN P. C. BOARD	1		△ F102	K5H123AA0013	FUSE		
■ E4	VEP01A96A	POWER IF P. C. BOARD	1		△ F201	K5H632300002	FUSE		
■ E5	VEP01A97A	BATT IF P. C. BOARD	1						
■ E6	VEP01A98A	DC INPUT P. C. BOARD	1		■ E8	VEP002U7A	REC INT CN P. C. BOARD	1	
■ E7	VEP002U5A	REC IF P. C. BOARD	1		△ PA800	K5H102YA0055	FUSE		
■ E8	VEP002U7A	REC INT CN P. C. BOARD	1						