

Main specifications **α6500** / **α6300**

	α6500 (ILCE-6500)	α6300 (ILCE-6300)
General		
Camera type	Interchangeable-lens digital camera	
Lens mount	E-mount	
Image sensor		
Type	APS-C type (23.5 x 15.6mm) Exmor CMOS sensor	
Number of pixels (effective)	Approx. 24.2 megapixels	
Number of pixels (total)	Approx. 25.0 megapixels	
Image sensor aspect ratio	3:2	
Anti-dust system	Yes	
Recording system (still images)		
Recording format	JPEG (DCF Ver. 2.0, Exif Ver. 2.3, MPF Baseline compliant), RAW (Sony ARW 2.3 format)	
	3:2 aspect ratio	L: 6000 x 4000 (24M), M: 4240 x 2832 (12M), S: 3008 x 2000 (6.0M)
Image size (pixels)	16:9 aspect ratio	L: 6000 x 3376 (20M), M: 4240 x 2400 (10M), S: 3008 x 1688 (5.1M)
	Sweep Panorama	Wide: horizontal 12416 x 1856 (23M), vertical 5536 x 2160 (12M), Standard: horizontal 8192 x 1856 (15M), vertical 3872 x 2160 (8.4M)
Image quality modes	RAW, RAW & JPEG, JPEG Extra fine, JPEG Fine, JPEG Standard	
RAW output	14 bit	
Picture Effect	13 modes: Posterization (Color, B/W), Pop Color, Retro Photo, Partial Color (R, G, B, Y), High Contrast Monochrome, Toy Camera, Soft High-key, Soft Focus, HDR Painting, Rich-tone Monochrome, Miniature, Watercolor, Illustration Standard, Vivid, Neutral, Clear, Deep, Light, Portrait, Landscape, Sunset, Night Scene, Autumn Leaves, Black & White, Sepia (Contrast -3 to +3 steps, Saturation -3 to +3 steps) (Style Box 1-6 also provided)	
Creative Style		
Dynamic range functions	Off, Dynamic Range Optimizer (Auto/Level (1-5)), Auto High Dynamic Range, Auto Exposure Difference, Exposure Difference Level (1.0-6.0 EV, 1.0 EV step)	
Color space	sRGB standard (with sYCC gamut) and Adobe RGB standard compatible with TRILUMINOS Color	
Recording system (movies)		
Recording format	XAVC S / AVCHD format Ver. 2.0 compliant / MP4	
Video compression	XAVC S: MPEG-4 AVC/H.264 <p>AVCHD: MPEG-4 AVC/H.264 MP4: MPEG-4 AVC/H.264</p> XAVC S: LPCM, 2ch AVCHD: Dolby Digital (AC-3), 2ch, Dolby Digital Stereo Creator MP4: MPEG-4 AAC-LC, 2ch	
Audio recording format	XAVC S 4K: 3840 x 2160 (30p/100Mbps, 30p/60Mbps, 24p/100Mbps, 24p/60Mbps) XAVC S HD: 1920 x 1080 (60p/50Mbps, 30p/50Mbps, 24p/50Mbps, 120p/100Mbps, 120p/60Mbps) AVCHD: 1920 x 1080 (60p/28Mbps/PS, 60i/24Mbps/FX, 60i/17Mbps/FH, 24p/24Mbps/FX, 24p/17Mbps/FH) MP4: 1920 x 1080 (60p/28Mbps, 30p/16Mbps), 1280 x 720 (30p/6Mbps) XAVC S 4K: 3840 x 2160 (25p/100Mbps, 25p/60Mbps) XAVC S HD: 1920 x 1080 (50p/50Mbps, 25p/50Mbps, 100p/100Mbps, 100p/60Mbps) AVCHD: 1920 x 1080 (50p/28Mbps/PS, 50i/24Mbps/FX, 50i/17Mbps/FH, 25p/24Mbps/FX, 25p/17Mbps/FH) MP4: 1920 x 1080 (50p/28Mbps, 25p/16Mbps), 1280 x 720 (25p/6Mbps)	
Image size (pixels)	NTSC <p>XAVC S 4K: 3840 x 2160 (30p/100Mbps, 30p/60Mbps) XAVC S HD: 1920 x 1080 (60p/50Mbps, 30p/50Mbps, 24p/50Mbps, 120p/100Mbps, 120p/60Mbps) AVCHD: 1920 x 1080 (60p/28Mbps/PS, 60i/24Mbps/FX, 60i/17Mbps/FH, 24p/24Mbps/FX, 24p/17Mbps/FH) MP4: 1920 x 1080 (60p/28Mbps, 30p/16Mbps), 1280 x 720 (30p/6Mbps) XAVC S 4K: 3840 x 2160 (25p/100Mbps, 25p/60Mbps) XAVC S HD: 1920 x 1080 (50p/50Mbps, 25p/50Mbps, 100p/100Mbps, 100p/60Mbps) AVCHD: 1920 x 1080 (50p/28Mbps/PS, 50i/24Mbps/FX, 50i/17Mbps/FH, 25p/24Mbps/FX, 25p/17Mbps/FH) MP4: 1920 x 1080 (50p/28Mbps, 25p/16Mbps), 1280 x 720 (25p/6Mbps)</p> PAL <p>XAVC S 4K: 3840 x 2160 (30p/100Mbps, 30p/60Mbps) XAVC S HD: 1920 x 1080 (60p/50Mbps, 30p/50Mbps, 24p/50Mbps, 120p/100Mbps, 120p/60Mbps) AVCHD: 1920 x 1080 (60p/28Mbps/PS, 60i/24Mbps/FX, 60i/17Mbps/FH, 24p/24Mbps/FX, 24p/17Mbps/FH) MP4: 1920 x 1080 (60p/28Mbps, 30p/16Mbps), 1280 x 720 (30p/6Mbps) XAVC S 4K: 3840 x 2160 (25p/100Mbps, 25p/60Mbps) XAVC S HD: 1920 x 1080 (50p/50Mbps, 25p/50Mbps, 100p/100Mbps, 100p/60Mbps) AVCHD: 1920 x 1080 (50p/28Mbps/PS, 50i/24Mbps/FX, 50i/17Mbps/FH, 25p/24Mbps/FX, 25p/17Mbps/FH) MP4: 1920 x 1080 (50p/28Mbps, 25p/16Mbps), 1280 x 720 (25p/6Mbps)</p>	
Slow & Quick motion (S&Q) Record Setting	NTSC mode: 1920x1080 (60p, 30p, 24p) PAL mode: 1920x1080 (50p, 25p)	-
Slow & Quick motion (S&Q) Frame Rate	NTSC mode: 1fps, 2fps, 4fps, 8fps, 15fps, 30fps, 60fps, 120fps PAL mode: 1fps, 2fps, 3fps, 6fps, 12fps, 25fps, 50fps, 100fps	-
Picture Profile	Yes (Off / PPI-PP9) Parameters: Black Level, Gamma (Movie, Still, Cine1-4, ITU709, ITU709 [800%], S-Log2, S-Log3), Black Gamma, Knee, Color Mode (Movie, Still, CineM, Pro, ITU709 Matrix, White&Black, S-Gamut, S-Gamut3, Cine, S-Gamut3), Saturation, Color Phase, Color Depth, Detail, Copy, Reset	
Movie functions	Audio Level Display, Audio Rec Level, Auto Slow Shutter, HDMI info. Display (On/Off selectable), Time Code/User Bit, Picture Profile, Creative Style, Picture Effect, Rec Control, Dual Video Rec, Marker Selection, PAL/NTSC Selector, Gamma Display Assist	
Color space	xvYCC standard (x.v.Color when connected via HDMI cable) compatible with TRILUMINOS Color	
Clear HDMI output		
NTSC	3840 x 2160 (30p/24p) / 1920 x 1080 (60p/24p) / 1920 x 1080 (60i), YCbCr 4:2:2 8bit/ RGB 8bit	
PAL	3840 x 2160 (25p) / 1920 x 1080 (50p) / 1920 x 1080 (50i), YCbCr 4:2:2 8bit/ RGB 8bit	
Media		
Media	Memory Stick PRO Duo, Memory Stick PRO-HG Duo, Memory Stick Micro (M2), SD memory card, SDHC memory card (UHS-I compliant), SDXC memory card (UHS-I compliant), microSD memory card, microSDHC memory card, microSDXC memory card	
Slot	Multi slot for Memory Stick Duo / SD memory card	
Noise reduction		
Noise reduction	Long exposure NR: On/Off, available at shutter speeds longer than 1 sec., High ISO NR: Normal/Low/Off selectable	
Multi Frame NR	Auto / ISO 100 to 51200	
White balance		
Modes	Auto WB / Daylight / Shade / Cloudy / Incandescent / Fluorescent (Warm White / Cool White / Day White / Daylight) / Flash / Color Temperature (2500 to 9900K) & Color Filter (G7 to M7: 57 steps, A7 to B7: 29 steps) / Custom / Underwater	
AWB micro adjustment	G7 to M7 (57 steps), A7 to B7 (29 steps)	
Priority Set in AWB	Yes	
Bracketing	3 frames, H/L/selectable	
Focus system		
Type	Fast Hybrid AF (phase-detection AF/contrast-detection AF)	
Focus point	425 points (phase-detection AF) / 169 points (contrast-detection AF)	
Sensitivity range	EV-1 to EV20 (ISO 100 equivalent with F2.0 lens attached)	
AF modes	Automatic AF (AF-A), Single-shot AF (AF-S), Continuous AF (AF-C), Direct Manual Focus (DMF), Manual Focus	
Focus area	Wide (425 points (phase-detection AF), 169 points (contrast-detection AF)) / Zone / Center / Flexible Spot (S/M/L) / Expand Flexible Spot / Lock-on AF (Wide / Zone / Center / Flexible Spot (S/M/L) / Expand Flexible Spot)	
Focus type with LA-EA3 (sold separately)	Phase-detection/contrast-detection selectable	
Other features	Lock-on AF Eye AF, Predictive control, Focus Lock, Eye-Start AF and AF micro adjustment (both only available with optional LA-EA2 or LA-EA4 attached), AF illuminator (built-in, LED type, range: Approx. 0.30-3m), AF ON	
Exposure control		
Metering type	1200-zone evaluative metering	
Metering sensor	Exmor CMOS sensor	
Metering sensitivity	EV-2 to EV20 (at ISO 100 equivalent with F2.0 lens attached)	
Metering modes	Multi-segment, Center-weighted, Spot (Standard/Large), Multi-segment, Center-weighted, Spot	
Exposure modes	Auto (Auto, Superior Auto), Programmed AE (P), Aperture priority (A), Shutter-speed priority (S), Manual (M), Scene Selection, Sweep Panorama, Movie / S&Q Frame Rate (Programmed AE (P) / Aperture priority (A) / Shutter-speed priority (S) / Manual (M))	Auto (Auto, Superior Auto), Programmed AE (P), Aperture priority (A), Shutter-speed priority (S), Manual (M), Scene Selection, Sweep Panorama, Movie/High Motion (Programmed AE (P) / Aperture priority (A) / Shutter-speed priority (S) / Manual (M))
Scene Selection	Portrait, Landscape, Macro, Sports Action, Sunset, Night Portrait, Night Scene, Hand-held Twilight, Anti Motion Blur	
Exposure compensation	+/- 5.0 EV (in 1/3 EV or 1/2 EV steps)	
AE bracketing	Bracket: Single/Bracket, Cont., 3/5/9 frames selectable. With 3 or 5 frames, in 1/3, 1/2, 2/3, 1.0, 2.0 or 3.0 EV increments, with 9 frames, in 1/3, 1/2, 2/3 or 1.0 EV increments.	
AE lock	Available with AE lock button. Locked when shutter button is pressed halfway.	
ISO sensitivity (Recommended Exposure Index)	Still images: ISO 100-25600 (expandable to 51200), AUTO (ISO 100-6400, selectable lower limit and upper limit), Movies: ISO 100-25600 equivalent, AUTO (ISO 100-6400 equivalent, selectable lower limit and upper limit)	
Viewfinder		
Type	XGA OLED, 1.0cm (0.39 type) electronic viewfinder (color)	
Total number of dots	2,359,296 dots	
Brightness control	Auto/Manual (5 steps between -2 and +2)	
Color temperature control	Manual (5 Steps)	
Field coverage	100%	
Magnification	Approx. 1.07x (35mm camera equivalent: Approx. 0.70x) with 50mm lens at infinity, -1m ⁻¹	
Diopter adjustment	-4.0 to +3.0m ⁻¹	
Eye point	Approx. 23mm from the eyepiece lens, 21.4mm from the eyepiece frame at -1m ⁻¹ (CIPA standard)	
Display	Graphic Display / Display All Info. / No Disp. Info. / Histogram / Digital Level Gauge	
Real-time image-adjustment display	On / Off	
Finder Frame Rate selection	Yes (1x, 2x)	

	α6500 (ILCE-6500)	α6300 (ILCE-6300)
LCD screen		
Type	7.5cm (3.0-type) wide type TFT	
Total number of dots	921,600 dots	
Touch Panel	Yes	-
Touch Focus	Yes (Touch Panel / Touch Pad)	-
Brightness control	Manual (5 steps between -2 and +2), Sunny Weather mode	
Adjustable angle	Up approx. 90 degrees, down approx. 45 degrees	
Display selector (Finder/LCD)	Auto / Manual	
Display	Graphic Display / Display All Info. / No Disp. Info. / Histogram / Digital Level Gauge / Shooting information for viewfinder mode	
Real-time image-adjustment display	On / Off	
Focus magnifier	5.9x, 11.7x	
Zebra	Yes (selectable level + range or lower limit as custom setting)	
Peaking MF	Yes (Level setting: High/Mid/Low/Off, Color: White/Red/Yellow)	
Other features		
Face detection	On / On (Regist. Faces) / Off, Face registration, Face selection (Max. number of detectable faces: 8)	
Auto Object Framing	Yes	
Clear Image Zoom	Still / Movie: Approx. 2x	
	Smart zoom (still images) M: Approx. 1.4x, S: Approx. 2.0x	
Digital zoom	Digital zoom (still images) L: Approx. 4x, M: Approx. 5.7x, S: Approx. 8x	
	Digital zoom (movies) Approx. 4x	
PlayMemories Camera Apps	Yes	
Lens compensation	Peripheral Shading, Chromatic Aberration, Distortion	
Zoom Ring Rotate	Yes	
Others	ISO Auto Minimum Shutter Speed, Bright Monitoring, Copyright Info, Set File Name, Location Information Link [*] (*Location Information Link for α6500 only)	
Shutter		
Type	Electronically controlled, vertical-traverse, focal-plane type	
Shutter speed	Still images: 1/4000 to 30 sec., Bulb Movies: 1/4000 to 1/4 (1/3 step) NTSC: Up to 1/60 in AUTO mode (up to 1/30 in Auto Slow Shutter mode) PAL: Up to 1/50 in AUTO mode (up to 1/25 in Auto Slow Shutter mode)	
Flash sync. speed	1/160 sec.	
Electronic front curtain shutter	Yes, On / Off	
Silent Shooting	Yes, On / Off	
SteadyShot INSIDE (image stabilization)		
Type	Image Sensor-Shift mechanism with 5-axis compensation (Compensation depends on lens specifications)	Not supported (image stabilization supplied by lens)
Flash control		
Control	Built-in flash	
Guide No.	6 (in meters at ISO 100)	
Flash coverage	16mm (focal length printed on the lens body)	
Control	Pre-flash TTL	
Flash compensation	+/- 3.0 EV (switchable between 1/3 and 1/2 EV steps)	
Flash bracketing	3/5/9 frames selectable. With 3 or 5 frames, in 1/3, 1/2, 2/3, 1.0, 2.0, 3.0 EV increments, with 9 frames, in 1/3, 1/2, 2/3, 1.0 EV increments.	
Flash modes	Flash off, Autoflash, Fill-flash, Rear Sync., Slow Sync., Red-eye reduction (On/Off selectable), Hi-speed sync ¹⁾ , Wireless ²⁾	
Recycling time	Approx. 4 sec.	
External flash	Sony α System Flash compatible with Multi Interface Shoe. Attach the shoe adaptor for flash compatible with Auto-lock Accessory Shoe.	
FE level lock	Yes	
Wireless control	Yes (wireless flash with lighting ratio control)	
Drive		
Drive modes	Single shooting, Continuous shooting (Hi+/Hi/Mid/Lo selectable), Self-timer, Self-timer (Cont.), Bracketing (Cont., Single, White Balance, DRO)	
Self-timer	10 sec. delay/5 sec. delay/2 sec. delay/Continuous self-timer (3 frames after 10 sec. delay/5 frames after 10 sec. delay/3 frames after 5 sec. delay/5 frames after 5 sec. delay/3 frames after 2 sec. delay/5 frames after 2 sec. delay)/Bracketing self-timer (Off/2 sec. delay/5 sec. delay/10 sec. delay)	
Speed (approx., max.) ³⁾	Continuous mode: 11fps (Hi-), 8fps (Hi), 6fps (Mid), 3fps (Lo)	
No. of recordable frames ²⁾ (approx.)	233 frames (JPEG Extra fine L), 269 frames (JPEG Fine L), 444 frames (JPEG Extra fine L), 47 frames (JPEG Fine L), 55 301 frames (JPEG Standard L), 107 frames (RAW), 100 frames (JPEG Standard L), 21 frames (RAW), 21 frames (RAW & JPEG)	
Playback		
Modes	Single (with or without shooting information, Y RGB histogram & highlight/shadow warning), 12/30-frame index view, Enlarged display mode (Maximum magnification L: 16.7x, M: 11.8x, S: 8.3x), Auto Review (10/5/2 sec. off), Image orientation (Auto/Manual/Off selectable), Slideshow, Panorama scrolling, Folder selection (Still / Date / MP4 / AVCHD / XAVC S HD / XAVC S 4K), Forward/Rewind (Movie), Delete, Protect, Photo Capture [*] (*Photo Capture for α6500 only)	
Interface		
PC interface	Mass Storage, MTP, PC Remote	
Multi / Micro USB Terminal	Yes ³⁾	
Wireless LAN (built-in)	Wi-Fi compatible (IEEE802.11b/g/n (2.4GHz band) ²⁾ , Playback of still images and movies on smartphones, PCs and TVs	
NFC ³⁾	Yes (NFC Forum Type 3 Tag compatible, One-touch remote, One-touch sharing)	
Bluetooth	Yes (Bluetooth Standard Ver. 4.1 (2.4GHz band))	
HD output	HDMI micro connector (Type-D), BRAVIA Sync (link menu), PhotoTV HD, 4K movie output, 4K still image playback	
Multi Interface Shoe	Yes	
Others	Microphone terminal (3.5mm Stereo minijack)	
Audio		
Microphone	Built-in stereo microphone or XLR-K2M / XLR-K1M / ECM-XYST1M (sold separately)	
Speaker	Built-in, monaural	
Print		
Compatible standards	Exif Print, Print Image Matching III, DPoF setting	
Custom function		
Type	Custom key settings, Programmable setting	
Memory function	Yes (Body: 2 sets / Memory card: 4 sets)	
Power		
Battery	Rechargeable battery pack NP-FW50	
Still images	Approx. 310 shots (viewfinder) / Approx. 350 shots (LCD screen) (CIPA standard)	Approx. 350 shots (viewfinder) / Approx. 400 shots (LCD screen) (CIPA standard)
Movies	Actual ^{3*)} : Approx. 65 min. (viewfinder) / Approx. 70 min. (LCD screen) (CIPA standard)	Actual ^{3*)} : Approx. 70 min. (viewfinder) / Approx. 75 min. (LCD screen) (CIPA standard)
External power	AC Adaptor AC-PW20 (sold separately)	
Weight		
With battery and Memory Stick PRO Duo	Approx. 453g (approx. 1 lb.)	Approx. 404g (approx. 14.3 oz.)
Body only	Approx. 410g (approx. 14.5 oz.)	Approx. 361g (approx. 12.8 oz.)
Dimensions		
W x H x D (excluding protrusions)	Approx. 120.0mm x 66.9mm x 53.3mm (approx. 4 3/4 x 2 3/4 x 2 1/8 in.)	Approx. 120.0mm x 66.9mm x 48.8mm (approx. 4 3/4 x 2 3/4 x 1 15/16 in.)
Operating temperature		
Range	32 ⁻¹⁾ -104 ^{°F} / 0-40 ^{°C}	

Specifications and features are subject to change without notice.

- ¹⁾ With compatible external flash.
- ²⁾ With "Hi+" continuous shooting mode. Approximate. May vary depending on shooting conditions and media.
- ³⁾ Supports Micro USB-compatible device.
- ⁴⁾ Configuration method/Access method: WPS or manually/infrastructure mode. When connecting to smartphones, the camera can always work as a base without a wireless access point. (Security: WEP/WPA-PSK/WPA2-PSK)
- ⁵⁾ Continuous movie recording is possible for approximately 29 minutes (limited by product specifications).
- ⁶⁾ Indicated recording time is defined by repeating the following cycle: Power on, start recording, zoom, stand-by and power off.
- ⁷⁾ Indicated recording time is defined by repeating the following cycle: Pressing the MOVIE button. No other operations such as zoom are performed.

Sony World Photography Awards

For more details, visit the website at: www.worldphoto.org

Trademarks & Remarks

- α**^{*}: "G Master", "4D FOCUS", "Exmor", "BIONZ X", "BRAVIA", "SteadyShot", "VAIO", "InfoLithium", "Translucent Mirror Technology", "Tru-Finder", "Memory Stick", "Memory Stick PRO Duo", "Memory Stick XC-HG Duo", "Memory Stick PRO-HG Duo", "PlayMemories Home", "PlayMemories Studio", "PlayMemories Online", "PlayMemories Mobile", "PlayMemories Camera Apps", "x.v.Color", "TRILUMINOS Color", "TRILUMINOS Color", "TRILUMINOS Display", and "XAVC S" are trademarks or registered trademarks of Sony Corporation.
- "Xperia" is a trademark or registered trademark of Sony Mobile Communications AB.
- "AVCHD" and "AVCHD Progressive" are trademarks of Panasonic Corporation and Sony Corporation.
- The SD Logo, SDHC Logo and SDXC Logo are trademarks of SD-3C, LLC.
- WhiteMagic is a trademark of Japan Display Inc.
- The terms HDMI and HDMI High-Definition Multimedia Interface, and the HDMI Logo are trademarks or registered trademarks of HDMI Licensing LLC in the United States and other countries.
- Movie is a trademark of Apple Computer, Inc., registered in the U.S. and other countries. Works with iMovie is a trademark of Apple Computer, Inc.
- The Wi-Fi Protected Setup Identifier Mark is a mark of the Wi-Fi Alliance.
- N-Mark is a registered trademark of the NFC Forum.
- Android is a trademark of Google Inc.
- Dolby is a trademark of Dolby Laboratories.
- Windows is a trademark of Microsoft Corporation in the United States and/or other countries.
- Mac and Mac OS are registered trademarks of Apple Inc.
- "Facebook" is a registered trademark of Facebook, Inc.
- "Flickr" is a registered trademark of Yahoo, Inc.
- All other company and product names mentioned herein are used for identification purposes only and may be the trademarks or registered trademarks of their respective owners.

- "InfoLithium" is a lithium battery pack which can exchange data with compatible electronic equipment about its energy consumption.
- Sony recommends that you use the battery pack with electronic equipment bearing the "InfoLithium" mark.
- Screen displays and effects used to illustrate some functions are simulated.

http://www.sony.net/digitalimaging/

Enter the exciting world of Sony α products through a Library, the

new photography-themed application for tablets.

 "sony α library"



 Download on the App Store



ANDROID APP ON Google play

Go to Google Play for Android Tablet. For iPad, go to App Store. Then search for "sony α library".

Sony | Photo Galley:

http://www.sony.net/Products/di_photo_gallery/



Sony | Camera Channel:

<https://www.youtube.com/c/ImagingbySony>



SONY

Interchangeable-lens digital camera

α6500

α6300



 **4D FOCUS**

The Power of Imaging

Immortalize infinite possibilities

Now, there are more ways to capture decisive moments in captivating detail. Super-speed autofocus, razor-edged resolution, expanded continuous shooting and other advances are seamlessly designed and integrated. The latest qualities and capabilities you need to make recordings, including 4K movies, look sharper, smoother and more professional are smartly contained in strong compact bodies. With the **α6500** and **α6300** interchangeable-lens cameras from Sony at your command, the possibilities are endless.



α6500

(Model ILCE-6500)

APS-C 24.2 Megapixels	ISO 100-25600	Phase Detection 425 AF points	AF Speed 0.05 sec.	11 Frames per sec.	307 Frames cont. shooting	5-axis SteadyShot INSIDE	Touch Focus
------------------------------------	------------------	--	---------------------------------	---------------------------------	--	--	----------------

α6300

(Model ILCE-6300)

APS-C 24.2 Megapixels	ISO 100-25600	Phase Detection 425 AF points	AF Speed 0.05 sec.	11 Frames per sec.
------------------------------------	------------------	--	---------------------------------	---------------------------------





Focus at the speed of sight

The evolution of 4D FOCUS accelerates

Without spectacular focus, you lose your edge. So raise your sights, with Sony taking autofocus to new heights of innovation. At the forefront of this progress is 4D FOCUS, extending phase-detection AF point coverage, increas-

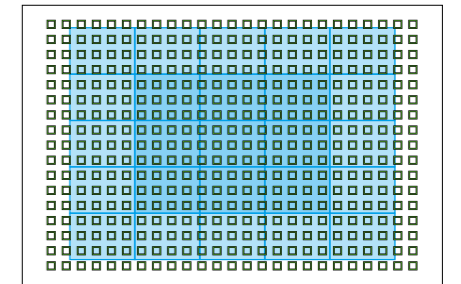
ing AF speed and incorporating High-density Tracking AF Technology. With 4D FOCUS AF performance, it's never been easier to capture fleeting moments in stunningly detailed sequences of images that leave the rest behind.



α6500 with FE 70-300mm F4.5-5.6 G OSS (SEL70300G), 1/2500 sec., F5.6, ISO 100

Wide 425 points World's highest number* of AF points

The α6500 and the α6300 are supremely accurate and reliable at capturing subjects in clear focus wherever they move within the frame. After all, they have the world's highest number* (425*) of focal plane phase-detection AF points widely and densely positioned throughout their image areas.

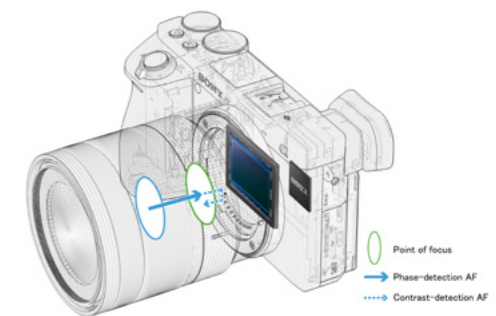


■ Phase-detection AF coverage (425 points)
 ■ Contrast-detection AF coverage (169 points*)
* 25 points + 144 points (each of 9 central AF points is divided into 16 segments.)

Fast 0.05 sec. World's fastest* AF speed

These cameras achieve the world's fastest* (0.05 sec.*) AF speed with the enhanced Fast Hybrid AF's integrated autofocusing performance and the uncanny efficiency of the BIONZ X™ image processing engine to handle so much information with astonishing accuracy.

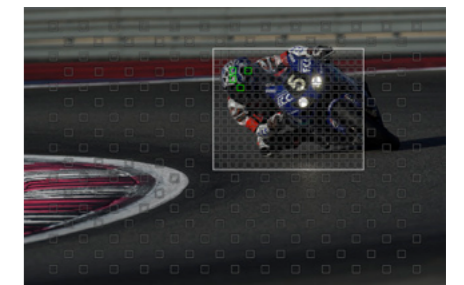
Fast Hybrid AF system



* Among interchangeable-lens digital cameras equipped with an APS-C image sensor as of October 2016, based on Sony research. Based on CIPA standard and internal measurement method with an E PZ 16-50mm F3.5-5.6 OSS, Pre-AF off and viewfinder in use.

Steadfast High-density Tracking AF Technology

For supremely reliable accuracy and tracking stability, High-density Tracking AF Technology activates AF points to cover the area around the subject with approx. 7.5 times as much density as the α6000. This focal plane phase-detection autofocus function can activate AF points seamlessly and track subjects moving within frame with such unerring precision.



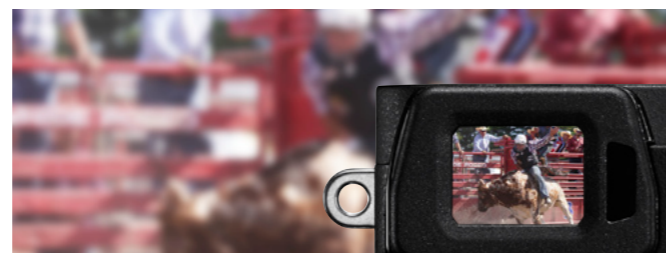
■ AF points that appear on actual screen
 □ AF algorithm (not shown on actual screen)



α6500 with FE 70-200mm F2.8 GM OSS (SEL70200GM), 2xTeleconverter (SEL20TC), 1/800 sec., F9, ISO 160

Live-view continuous shooting with minimal lag

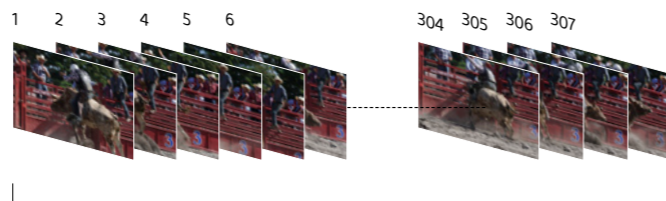
High-speed continuous shooting is available at up to approx. 11fps (Hi+), and up to approx. 8fps (Hi) in live-view. In live-view continuous shooting at up to 8fps, display lag on the electronic viewfinder (EVF) or LCD screen is kept to an absolute minimum, so you can capture moving subjects just as if you are shooting using an optical viewfinder.



Ample buffer for continuous shooting NEW on α6500

Faster internal processing and a higher-capacity buffer memory now allow up to 307 shots (around 36 seconds)* of high-speed continuous shooting. This increases the chances of capturing more decisive moments.

* With "Hi" continuous shooting mode and "Fine" image quality settings.



Approx. 36 seconds



Eye AF

Eye AF mode automatically detects, then focuses on and tracks focus on a subject's eye with pinpoint precision, even as the face moves. This extends your freedom to focus and frame a shot, even when shooting with a fast lens with aperture fully open (with shallow depth of field). Eye AF also works in AF-C mode, so even if the subject moves, the wide coverage of the high-density 425-point focal plane phase-detection AF sensor maintains focus on the eye.

Focus Release/Balance

You can choose settings to optimize focus and release action in ways that are most suitable for shooting each scene. Priority setup (AF, Release or Balanced Emphasis) is available in AF-S and AF-C modes. Also, you can adjust shutter release timing by choosing Release (shutter) priority, AF (focus) priority or Balanced Emphasis setting, to achieve a balance between Release and AF priorities.

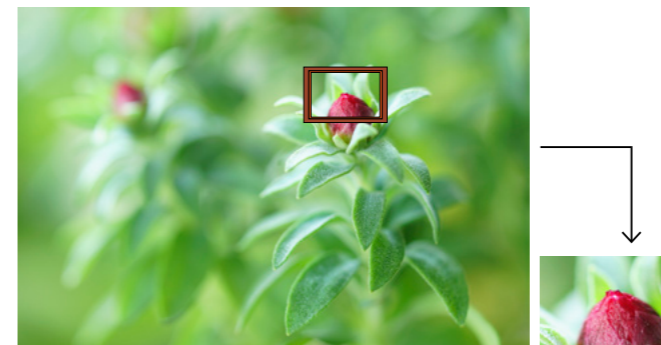
Focal plane phase-detection AF for A-mount lenses

The cameras offer 425-focal-plane-phase-detection-AF point coverage even with an A-mount lens mounted via LA-EA3 (LA-EA1) mount adaptor*. So you can take full advantage of speedy response and high performance when shooting with an A-mount lens.

* A-mount lenses with SSM or SAM only. Users can choose phase-detection AF or contrast-detection AF in AF System menu. "Phase-detection AF" is not available during movie shooting. AF-C is available only when "Phase-detection AF" is selected with AF System, but no motion tracking is performed during continuous shooting (Hi+, Hi, Mid).

AF in Focus Magnifier

You can use autofocus even while enlarging a selected image area on the viewfinder or LCD screen, for finer adjustment of focus, for example. This is excellent for macro shooting, when accurate focusing is crucial.



Expand Flexible Spot

When the selected AF point loses track of or is not positioned on a moving subject, Expand Flexible Spot function automatically directs surrounding AF points to restore focus instantly on that subject.



Touchscreen for more intuitive, tactile focus

Immediate focus point selection by touch operation when shooting stills and movies NEW on α 6500

The Touch Focus function puts the power of more immediate, intuitive focus right at your fingertip. Simply touch the area of the still/movie image on the LCD screen that you want to focus on. There's no need to lock autofocus

and adjust composition, or use Flexible Spot to shift between areas of focus. When shooting stills with manual focus, you can double-tap the screen to enlarge the desired area of focus on display.

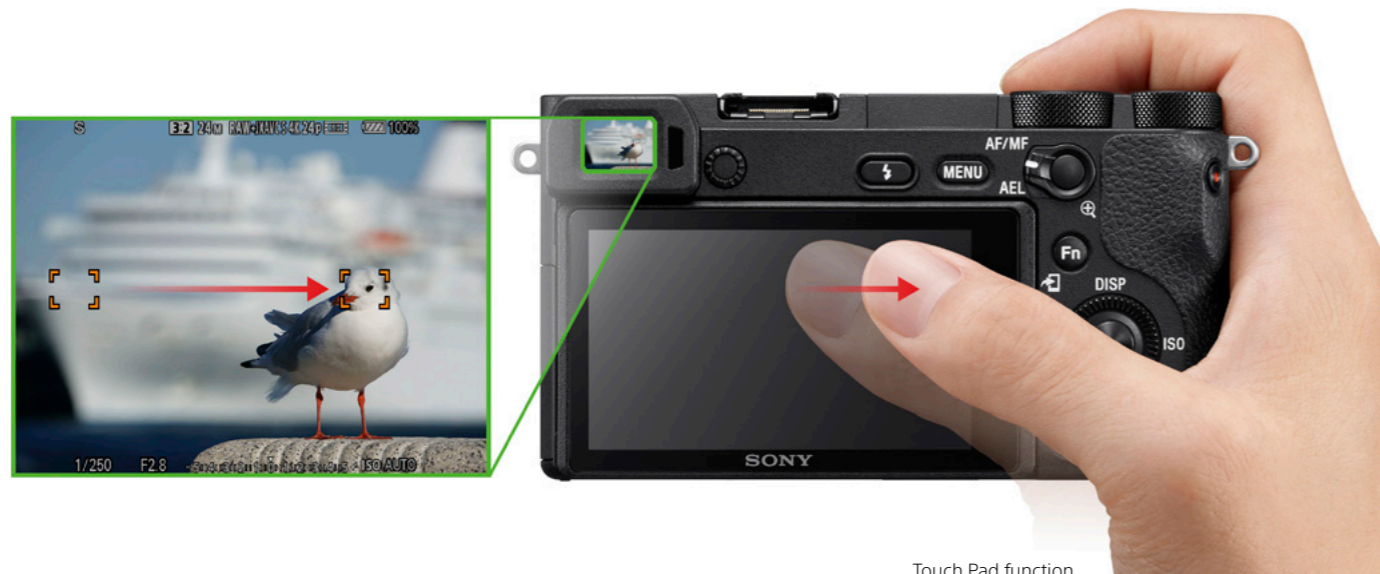


Touch Focus function

Smooth focus point selection while looking into the viewfinder by using Touch Pad function NEW on α 6500

While monitoring the electronic viewfinder, you can conveniently use the LCD screen for Touch Pad function.

Simply swipe your fingertip to shift focus point intuitively and smoothly from one area to another onscreen.



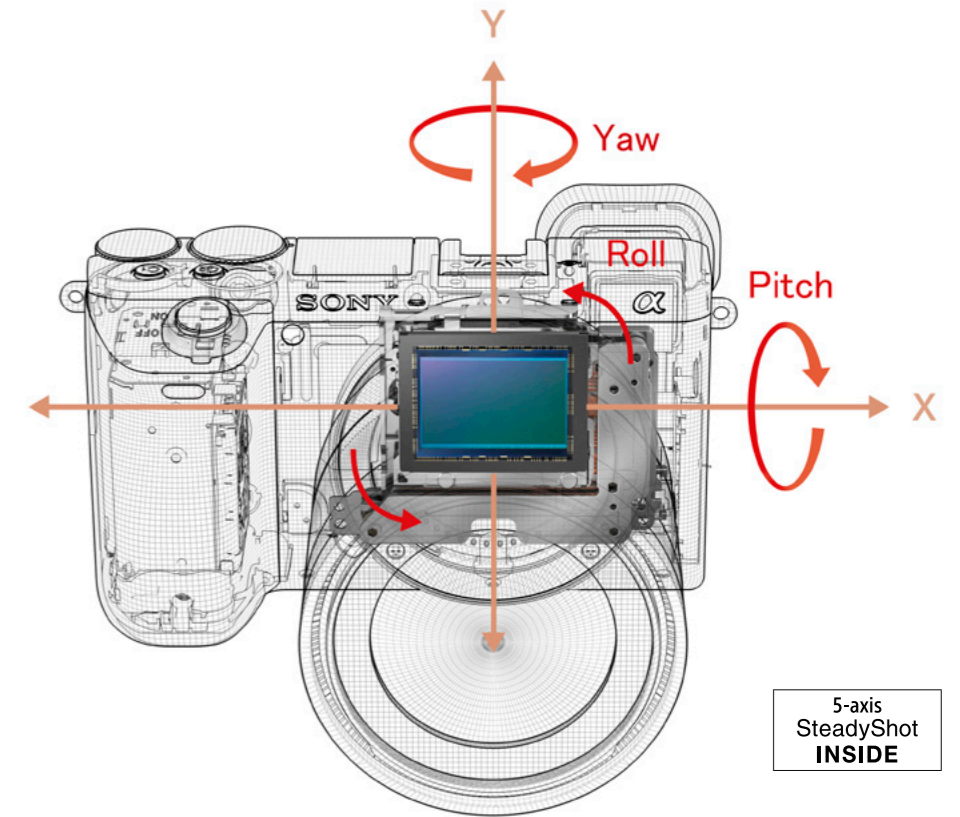
Touch Pad function

Built-in stabilization, complete and compact

5-axis image stabilization NEW on α 6500

The re-engineering of the brilliant α 6000 series layout paved the way for creation of the compact α 6500 – the APS-C camera with built-in 5-axis optical image stabilization for shooting movies and stills. A new gyro sensor achieves stabilization to the effect of shooting with 5-stops-faster* shutter speed. Compensation for five types of image-blurring camera shake lets you shoot with assurance that high-resolution recordings, made even while zooming in on distant subjects, or shooting close-ups or night scenes, will look surprisingly crisp and clear.

* Based on CIPA standard. Pitch/yaw stabilization only. With Sonnar T* FE 55mm F1.8 ZA. Long exposure NR off.



Pitch and yaw compensation



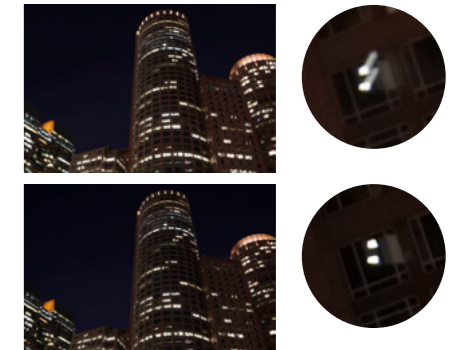
Compensation for commonly experienced pitch and yaw shake at long focal length shown at bottom.

Horizontal and vertical shift compensation



Compensation for X- and Y-axis shift shake at high magnification, during macrophotography, etc.

Roll compensation

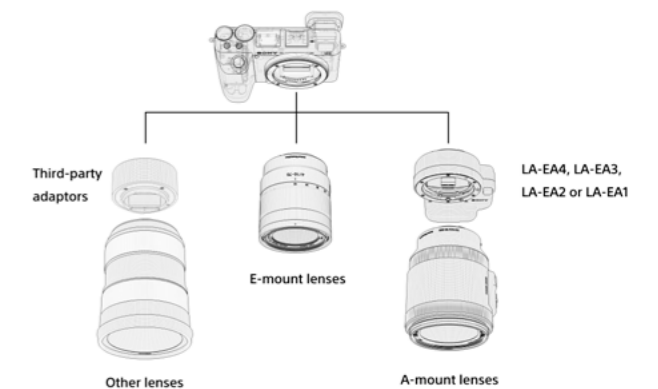


Compensation for roll shake on the Z-axis during long exposures. Most in-lens systems for interchangeable-lens cameras cannot compensate for roll shake.

Compatibility with wide-ranging mountable lenses NEW on α 6500

5-axis image stabilization lets you enjoy unparalleled handheld shooting freedom with more of your favorite mountable lenses. The short flange-back in the E-mount of the α 6500 extends compatibility with a range of lenses.

Note: When using a third-party mount adaptor, performance, functionality and operation are not guaranteed and Sony will take no responsibility if a malfunction occurs.



Inside imaging innovation

Exmor
CMOS Sensor

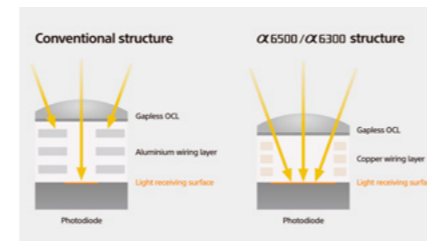


24.2-megapixel APS-C Exmor™ CMOS sensor

An APS-C sensor with approximately 24.2 effective megapixels features copper wiring and enhanced circuit processing that lower the wiring layer and boost light collection efficiency. In conjunction with the BIONZ X image processor, it minimizes noise throughout a wide sensitivity range of ISO 100-51200*. The highly conductive copper in the circuitry significantly raises readout speed in order for the camera to offer 4K movie recording with full pixel

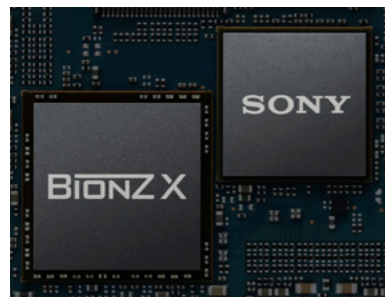
readout without pixel binning and Full HD 120fps shooting among its advanced functions.

* Standard ISO range: ISO 100-25600 for stills and movies. Expandable up to ISO 51200 for stills only.

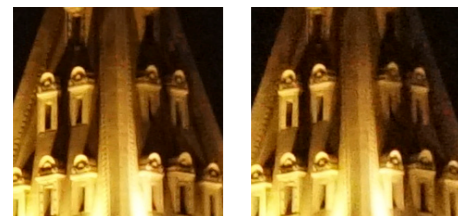


BIONZ X

BIONZ X image processing engine



α6500 with Vario-Tessar T* E 16-70mm F4 ZA OSS (SEL1670Z), 1/20 sec., F5.6, ISO 6400



ISO 1600 ISO 6400
High-quality images with reduced noise even at high ISO settings.

The BIONZ X image processing engine applies an algorithm to work seamlessly with the image sensor, resulting

in unrivaled clarity, low noise levels, and more detailed texture depiction, particularly in the mid-to-high ISO range.

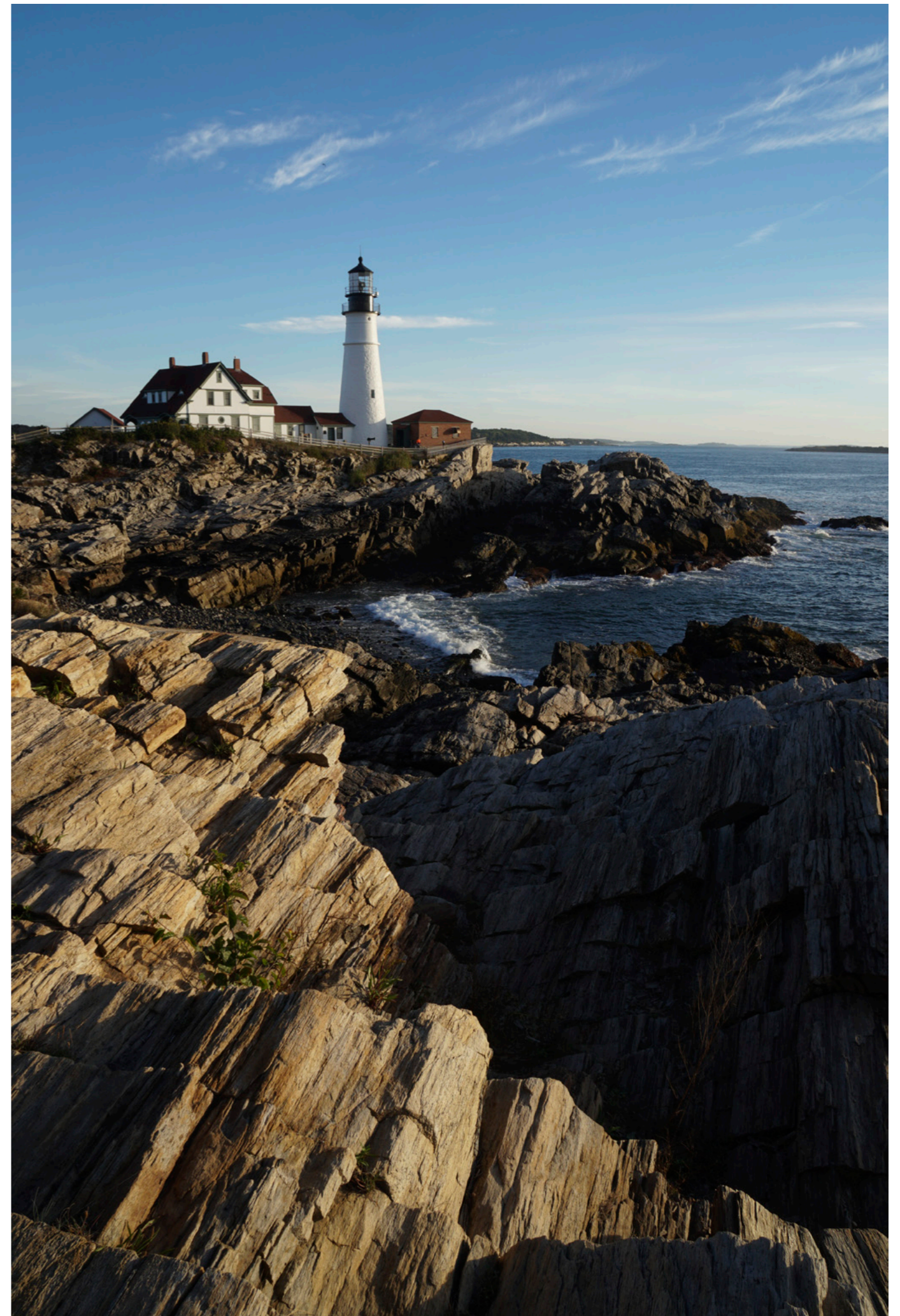
New Front-end LSI NEW on α6500

New front-end LSI (large-scale integration) in the α6500 supports BIONZ X image processing power even further, benefiting image quality.

14-bit RAW output

14-bit digital signals that are converted from analog signals in the image sensor undergo 16-bit processing by the image processing system for 14-bit RAW image output. This enriches tonal gradation for RAW recording.

* For shooting in Long exposure NR, Bulb, or continuous shooting mode, only 12-bit recording is possible.



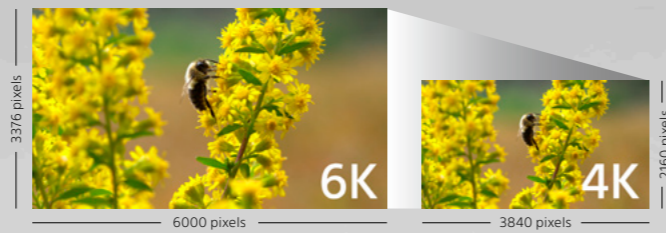
α6500 with Vario-Tessar T* E 16-70mm F4 ZA OSS (SEL1670Z), 1/60 sec., F11, ISO 100

Unleash magnificent movie star quality

4K movies^{*1} oversampled from 6K (20MP)

The **α6500** and **α6300** record high-resolution 4K movies^{*1} of wide dynamic range in the Super 35mm format favored among cinema camera users. Full pixel readout without pixel binning collects approx. 2.4 times^{*2} (6K equivalent) as much information as is required for 4K (QFHD: 3840 x 2160) movie output. This oversampling effect gives 4K images the realistic depth and dimension that you might experience when witnessing the actual scene.

2.4 times as much information



4K
3840 x 2160

^{*1} The camera may automatically turn off to continuously record a high quality movie. Recording time may be shortened, depending on shooting conditions.
^{*2} In 24p recording. Approx. 1.6 times in 30p recording.

Quicker, denser, smoother Fast Hybrid AF coverage

Now, this extra-dense phase-detection AF point coverage gives movie autofocus unprecedented speed and precision, so it's especially valuable for 4K movie recording. Moreover, the **α6500** and **α6300** feature adjustable AF Drive Speed and AF Tracking Sensitivity to help you express more creativity by manipulating focus, as far as conditions and your imagination allow.



Full HD 120fps (100fps^{*1}) shooting

You can shoot high-quality Full HD^{*2} footage, even in Full HD 120fps (100fps^{*1}) high-speed shooting with a high bit rate up to 100Mbps.

^{*1} In PAL setting.
^{*2} Pixels to be read are limited to the sensor area that is required for Full HD movies.

Slow and Quick motion **NEW on α6500**

Now, up to 5x slow motion and up to 60x quick motion^{*1,2} can be recorded at up to 50Mbps in high-quality Full HD in camera. Choose among eight movie frame rates ranging from 1fps to 120fps (100fps^{*3}). After shooting, no PC-based post-processing is required for viewing your slow motion and quick motion footage.

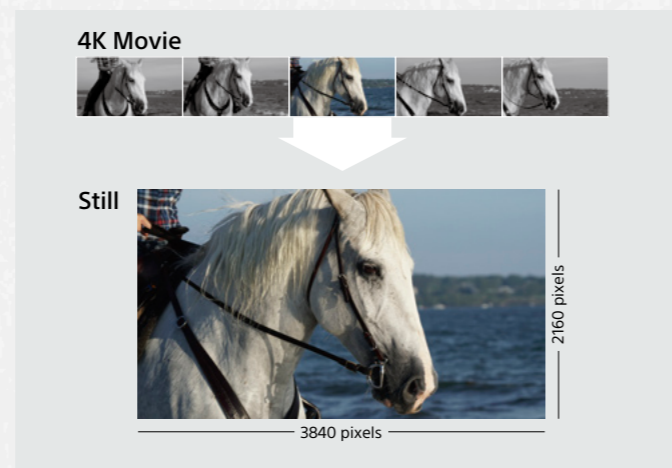
^{*1} In NTSC setting. Up to 5x slow motion and up to 50x quick motion recording is available in PAL setting.
^{*2} Sound cannot be recorded. SDHC/SDXC memory card of Class 10 or higher is required.
^{*3} In PAL setting.

S&Q Record Setting	NTSC	24p	30p	60p
	PAL	25p	50p	

S&Q Frame Rate	NTSC	1fps	2fps	4fps	8fps	15fps	30fps	60fps	120fps
	PAL	1fps	2fps	3fps	6fps	12fps	25fps	50fps	100fps

Photo Capture **NEW on α6500**

Use Photo Capture function to select, extract and save still images of decisive moments from movie footage. Approximately 8-megapixel images from 4K movies, and approximately 2-megapixel images from Full HD movies can be created and saved as image files.



S-Gamut/S-Log shooting

S-Gamut/S-Log shooting give you flexibility to make more expressive movies by performing color grading in post-production. The S-Log3 and S-Log2 gamma curves feature wide dynamic range (up to 1300%) to minimize blown highlights and blocked shadows. These cameras even offer impressive 14-stop latitude in S-Log3 gamma setting, and also support S-Gamut, S-Gamut3, and S-Gamut3.Cine color space from Sony.

Note: S-Log2 and S-Log3 are premised on processing pictures.

High-bit-rate XAVC S* format

As a more consumer-friendly version of the XAVC 4K/HD format for professional use, the XAVC S* format is great for capturing high-quality images at a maximum 100Mbps bit rate for 4K 30p (25p)/24p. The benefits of finer details and less compression noise are perfectly clear.

* SDHC/SDXC memory card Class 10 or higher is required for movie recording in XAVC S format. UHS-I (U3) SDHC/SDXC card is required for 100Mbps recording.

Recording format	Image size	Frame rate	Wrapper	Bit-rate
XAVC S 4K	4K 3840 x 2160	30p (25p)/24p	MP4	100Mbps/60Mbps
XAVC S HD	Full HD 1920 x 1080	60p (50p)/30p (25p)/24p 120p (100p)	MP4	50Mbps 100Mbps/60Mbps

Clean HDMI output

Choose 4K (QFHD: 3840 x 2160 pixels) output with 30p and 24p frame rates for recording high-quality 4K movies as uncompressed footage on a compatible external recorder, or for direct viewing on a compatible monitor or TV, while recording in-camera*.

* Image will not be displayed on the camera's LCD screen during 4K recording.

Supports professional-quality mic and audio input

In addition to plug-in microphones, these cameras support line input from professional-standard audio devices with XLR terminal, with use of a separately sold XLR adaptor kit (XLR-K2M/XLR-K1M) that enables connection with various high-end microphones. That way, you can make fine audio setting adjustments and high-quality/low-noise sound recordings worthy of serious movie shooting.

More features for fine tuning and post-production

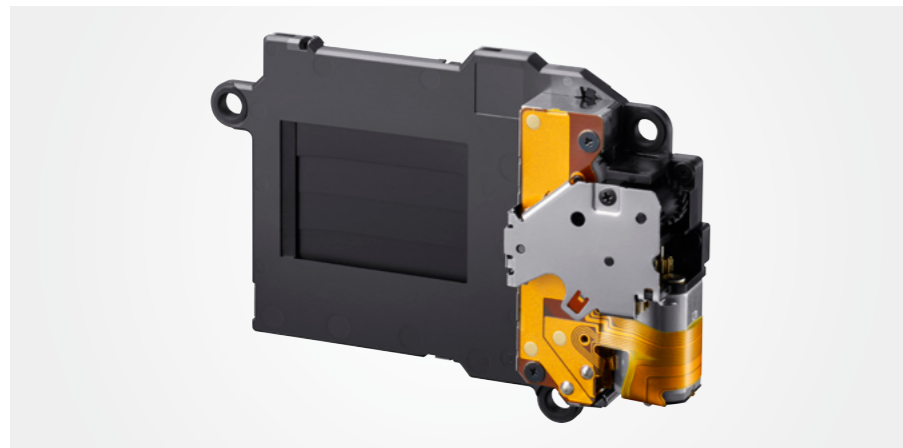
Picture Profile, Gamma Display Assist, Zebra Function, Time code, User bit, etc. support movie production workflow.

Rock-solid and ready for everything

200,000 shutter releases and beyond NEW on α 6500

The shutter is tested to withstand about 200,000 release cycles* while transmitting very low vibration. The shutter system is designed to minimize vibration, maximize image sensor resolution performance and suppress shutter sound.

* With the electronic front curtain shutter, under internal test conditions of Sony.



Robust lens mount

The strength and rigidity of each camera body and lens mount provide an especially solid foundation for mounting and withstanding rugged use with even large, heavy lenses such as super telephoto lenses and lenses preferred for movie shooting.



Tough magnesium alloy body

With internal frames, rear cover, top cover and front cover constructed of magnesium alloy, the robust, rigid, light bodies of the α 6500 and α 6300 are stronger than those of their predecessors. Designed for solid reliability and steady handling, these compact bodies readily withstand the rigors of shooting in the field.



Dust and moisture resistance

Enjoy carefree shooting in tough environments, thanks to comprehensive dust and moisture resistance measures that help prevent water and dust from entering the body. These measures include sealing around the buttons and dials, as well as a protective double-layered structure that tightly interlocks panels and components.

Note: These cameras are designed for optimal dust and moisture resistance, but are not waterproof or splashproof.



Enhanced grip for secure handling NEW on α 6500

Ergonomically refined grip contours let you grasp either of these cameras and feel perfectly at ease and secure at handling any operation, even when a large lens is mounted. The grip of the α 6500 in particular is deeply recessed for a hand to take an exceptionally firm, comfortable hold, regardless of shooting position and conditions.

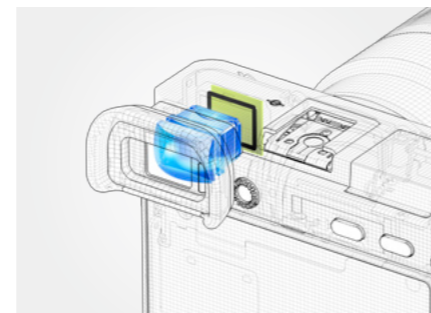


Extra-smooth views on XGA OLED Tru-Finder™ EVF

The α 6500 and the α 6300 both employ a high-contrast, high-resolution XGA OLED Tru-Finder offering high visibility and fine details in dark areas and color reproduction. These cameras also feature an additional mode to display at 120fps (100fps*), so you can see smooth action and track it easily.

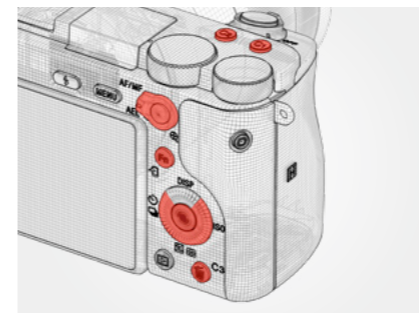
* In PAL setting.

XGA OLED
Tru-Finder



Expanded custom function NEW on α 6500

The α 6500 has ten customizable buttons (and the α 6300 has nine) to which you can assign functions for quicker, more intuitive shooting and playback. 68 functions (and 64 for the α 6300) are easily assignable to the buttons for convenient access when shooting, although some functions can only be assigned to certain buttons.



Power supply via USB

Camera operation can be powered via USB connection to mobile battery. This conserves the camera battery, extending the length of time that the camera can be used before the battery is depleted. When the camera is turned off, the battery can be charged via the same connection.



Convenient tiltable LCD screen

The LCD screen tilts up approx. 90 degrees and down approx. 45 degrees to accommodate a wide range of shooting angles. This flexibility complements the cameras' compactness and mobility, and expands shooting options. Views are clear under direct sunlight, thanks to the screen's WhiteMagic™ technology with a unique RGBW pixel structure that nearly doubles display brightness for easier checking of focus and image details.



A feast of higher functions

Highlight and Entire Screen Avg. metering modes NEW on α6500

In addition to the existing Multi, Center weighted, and Spot metering modes, the α6500 features Highlight mode that detects the brightest area in the frame to avoid blown highlights, and Entire Screen Avg. mode that can provide stable auto exposure as composition changes.

Location Information Link via Bluetooth¹ NEW on α6500

From a mobile phone/tablet with PlayMemories Mobile™² app installed, the camera can get location data and record it with stills or movies. Then, use PlayMemories Home™ application on a PC to organize imported images on a map.

¹ Bluetooth connectivity available with the following terminal devices (at the date of release):
-Android (Android 5.0 or later, Bluetooth 4.0 or later)
-iOS (Bluetooth 4.0 or later)

² Use the latest version of PlayMemories Mobile.

Exposure standard adjustment NEW on α6500

The standard exposure value can be adjusted from -1 to +1 stop in 1/6-stop increments. This setting can be made separately for each metering mode.

Enhanced spot metering NEW on α6500

The spot exposure metering position can be linked to the focus area when the Flexible Spot or Expand Flexible Spot mode is in use. You also have a choice of Standard or Large metering spot size for optimum exposure of the widest range of subjects.

More convenience on the menu NEW on α6500

With the α6500 menu's categorization scheme newly redesigned from the α6000 series, it's easy to find, at the top of the screen, the name of a grouping on a tab that can be selected among various other color-coded tabs. This allows quick access to desired menu items, for smooth changes of settings even during shooting.

Silent Shooting

Release the shutter of the α6500 and α6300 without a sound when silence is required, as when shooting wildlife, even when continuous shooting with AF/AE tracking is engaged. For quicker access, assign Silent Shooting mode to a customizable button.

Go more mobile

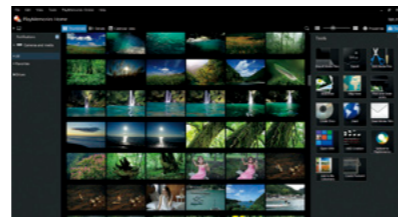
With Wi-Fi/NFC/QR code capabilities, the α6500 and α6300 can be coupled with mobile devices for quick, easy sharing of footage and camera views as well as convenient remote control options. The cameras also introduce QR code compatibility for easy connection with non-NFC smartphones.



PlayMemories Home



It's easy to install this image management software onto a Windows or Mac computer, then use it for easy viewing, editing and printing. You can also upload and share content via network services.



Note: Features are different on Mac and Windows versions.

PlayMemories Camera Apps™ www.sony.net/pmca

This application download service lets you add new functions to either camera's feature set, so you can express more of your creativity in photographs. Time-lapse for recording and combining images shot at chosen intervals, Smart Remote Control for controlling various settings from a smartphone or tablet, and Sky HDR (high-dynamic-range imaging) are just some of many wonderful apps to choose from.



Capture One Express (for Sony)

Take advantage of this RAW converter that you can download for free from Phase One. Not only is it great for rendering colors and details with incredible precision – it also features flexible digital asset management, all essential adjustment tools, and fast, responsive performance in one convenient, customizable, integrated solution.



* Please direct all inquiries on purchase, usage and support on Capture One solutions to Phase One.

α6500

α6300

- 1 Remote sensor
- 2 N mark
- 3 Microphone
- 4 AF illuminator/Self-timer lamp
- 5 Lens release button
- 6 Flash
- 7 Multi Interface Shoe
- 8 ON/OFF (Power) switch
- 9 Shutter button
- 10 C1 (Custom 1) button
- 11 C2 (Custom 2) button¹
- 12 Mode dial
- 13 Control dial
- 14 Battery/Memory card cover
- 15 Access lamp
- 16 Tripod socket hole
- 17 Hook for shoulder strap
- 18 Speaker
- 19 Multi/Micro USB Terminal (Supports Micro USB compatible devices)
- 20 Charge lamp
- 21 HDMI micro jack
- 22 Microphone jack

- 23 Diopter-adjustment dial
- 24 Eye sensor
- 25 Viewfinder
- 26 Eyepiece cup
- 27 For shooting:Fn button
For viewing:Send to Smartphone button
- 28 Monitor
- 29 Playback button
- 30 Flash pop-up button
- 31 MENU button
- 32 For shooting:AF/MF button, AEL button
For viewing:Enlarge button
- 33 MOVIE button
- 34 AF/MF/AEL switch lever
- 35 Control wheel
- 36 Center button
- 37 C2 (Custom 2) button/Delete button²
- 38 C3 (Custom 3) button/Delete button¹

¹ For α6500 only.
² For α6300 only.

Number of recordable frames for single media

(Image size L 24M, aspect ratio 3:2)

	8GB	16GB	32GB	64GB
Standard	1,300	2,700	5,400	10,500
Fine	820	1,650	3,300	6,600
Extra fine	405	810	1,600	3,250
RAW & JPEG	215	435	880	1,750
RAW	295	600	1,200	2,400

Movie recording time for single media (Hours:Minutes:Seconds)

	8GB	16GB	32GB	64GB	
XAVC S 4K	30p/25p, 100M	0:09:00	0:15:00	0:35:00	1:15:00
	30p/25p, 60M	0:15:00	0:30:00	1:00:00	2:05:00
	24p, 100M	0:09:00	0:15:00	0:35:00	1:15:00
	24p, 60M	0:15:00	0:30:00	1:00:00	2:05:00
XAVC S HD	120p/100p, 100M	0:09:00	0:15:00	0:35:00	1:15:00
	120p/100p, 60M	0:15:00	0:30:00	1:00:00	2:05:00
	60p/50p, 50M	0:15:00	0:35:00	1:15:00	2:35:00
	30p/25p, 50M	0:15:00	0:35:00	1:15:00	2:35:00
24p, 50M	0:15:00	0:35:00	1:15:00	2:35:00	
AVCHD	60i/50i, 24M (FX)	0:40:00	1:25:00	3:00:00	6:00:00
	60i/50i, 17M (FH)	0:55:00	2:00:00	4:05:00	8:15:00
	60p/50p, 28M(PS)	0:35:00	1:15:00	2:30:00	5:05:00
	24p/25p, 24M (FX)	0:40:00	1:25:00	3:00:00	6:00:00
MP4	24p/25p, 17M (FH)	0:55:00	2:00:00	4:05:00	8:15:00
	60p/50p, 28M	0:35:00	1:15:00	2:35:00	5:20:00
	30p/25p, 16M	1:00:00	2:00:00	4:10:00	8:25:00
	1280 x 720, 30p/25p, 6M	2:35:00	5:20:00	10:55:00	22:00:00

• Recommended memory cards for movie recording in AVCHD/MP4 formats: Memory Stick PRO Duo (Mark2), Memory Stick PRO-HG Duo, SD memory card/SDHC memory card/SDXC memory card (Class 4 or more)
• Recommended memory card for movie recording in XAVC S format: SDHC/SDXC memory card of Class 10 or higher is required.
• The numbers in the table show approximate maximum recordable time obtained by totaling all movie files.
• AVCHD movies are automatically divided into separate files up to a maximum of 2GB each.

Explore higher perspectives

Lenses

E-mount APS-C lenses

 E 16mm F2.8 (SEL16F28)	 E 35mm F1.8 OSS (SEL35F18)	 E PZ 18-105mm F4 G OSS (SELP18105G)
 Fisheye Converter (VCL-ECF2) <small>*For SEL16F28, SEL20F28</small>	 E 50mm F1.8 OSS (SEL50F18)	 FE PZ 18-110mm F4 G OSS (SELP18110G)
 Ultra Wide Converter (VCL-ECU2) <small>*For SEL16F28, SEL20F28</small>	 E 10-18mm F4 OSS (SEL1018)	 E 18-200mm F3.5-6.3 OSS (SEL18200)
 E 20mm F2.8 (SEL20F28)	 E PZ 16-50mm F3.5-5.6 OSS (SELP1650)	 E 18-200mm F3.5-6.3 OSS LE (SEL18200LE)
 Sonnar T* E 24mm F1.8 ZA (SEL24F18Z)	 Vario-Tessar T* E 16-70mm F4 ZA OSS (SEL1670Z)	 E PZ 18-200mm F3.5-6.3 OSS (SELP18200)
 E 30mm F3.5 Macro (SEL30M35)	 E 18-55mm F3.5-5.6 OSS (SEL1855)	 E 55-210mm F4.5-6.3 OSS (SEL55210)














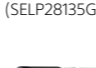






PZ = Powered Zoom

Explore higher perspectives

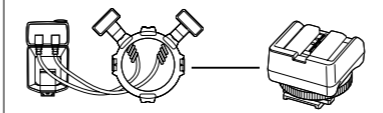
See the world from more creative perspectives with the full range of premium Sony A-mount lenses, including fisheye, wide-angle, super telephoto, macro and legendary ZEISS® lenses for the ultimate expression of images. (Optional Mount Adaptor LA-EA4 or LA-EA3 is required to mount an A-mount lens.)*



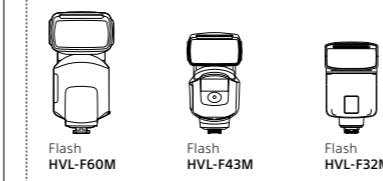
E-mount Full frame lenses

 FE 28mm F2 (SEL28F20)	 Vario-Tessar T* FE 16-35mm F4 ZA OSS (SEL1635Z)
 Ultra Wide Converter (SEL075UWC) <small>*For SEL28F20 only</small>	 FE 24-70mm F2.8 GM OSS (SEL2470GM)
 Fisheye Converter (SEL057FEC) <small>*For SEL28F20 only</small>	 Vario-Tessar T* FE 24-70mm F4 ZA OSS (SEL2470Z)
 Distagon T* FE 35mm F1.4 ZA (SEL35F14Z)	 FE 24-240mm F4.5-5.6 OSS (SEL24240)
 Sonnar T* FE 35mm F2.8 ZA (SEL35F28Z)	 FE 28-70mm F3.5-5.6 OSS (SEL2870)
 Planar T* FE 50mm F1.4 ZA (SEL50F14Z)	 FE PZ 28-135mm F4 G OSS (SELP28135G)
 FE 50mm F1.8 (SEL50F18F)	 FE 70-200mm F2.8 GM OSS (SEL70200GM)
 FE 50mm F2.8 Macro (SEL50M28)	 FE 70-200mm F4 G OSS (SEL70200G)
 Sonnar T* FE 55mm F1.8 ZA (SEL55F18Z)	 FE 70-300mm F4.5-5.6 G OSS (SEL70300G)
 FE 85mm F1.4 GM (SEL85F14GM)	
 FE 90mm F2.8 Macro G OSS (SEL90M28G)	

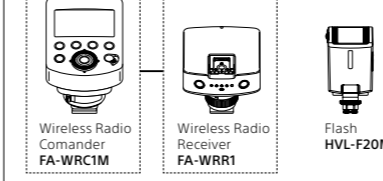
Flash



Macro Twin Flash Kit HVL-MT24AM Shoe Adaptor ADP-MAA




Flash HVL-F60M Flash HVL-F43M Flash HVL-F32M



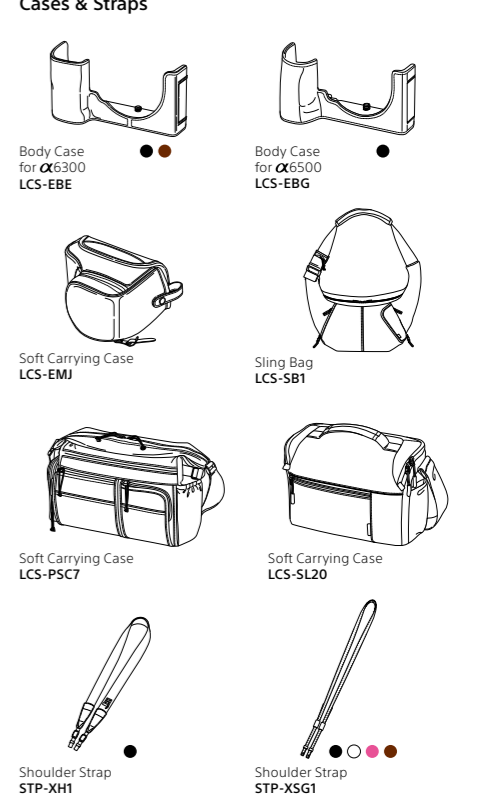
Wireless Radio Commander FA-WRC1M Wireless Radio Receiver FA-WRR1 Flash HVL-F20M

Lights / Microphones / Monitor / Bracket




Battery Video IR Light HVL-LEIR1 Ring Light HVL-RL1 Battery Video Light HVL-LE1 Clip-on LCD Monitor CLM-FH05 Bracket VCT-SSLH

Cases & Straps



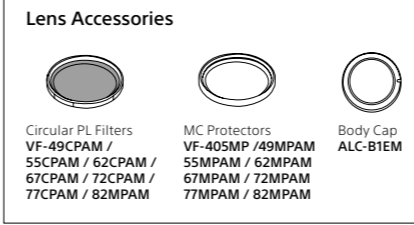
Body Case for α6300 LCS-EBE Body Case for α6500 LCS-EBG
Soft Carrying Case LCS-EMJ Sling Bag LCS-SB1
Soft Carrying Case LCS-PSC7 Soft Carrying Case LCS-SL20
Shoulder Strap STP-XH1 Shoulder Strap STP-XSG1

Microphones



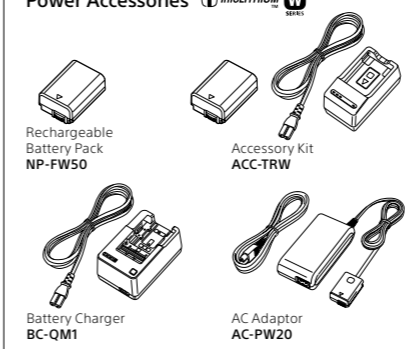
XLR Adaptor Kit XLR-K2M Shotgun Microphone ECM-CG60 Stereo Microphone ECM-XYST1M

Lens Accessories



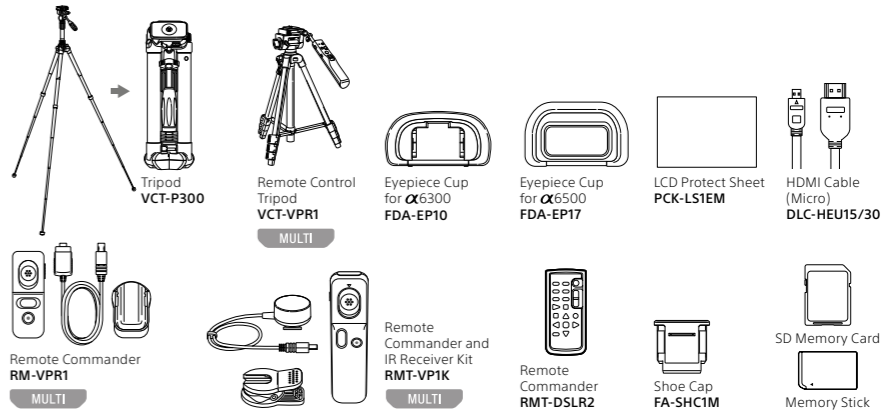
Circular PL Filters VF-49CPAM / 55CPAM / 62CPAM / 67CPAM / 72CPAM / 77CPAM / 82MPAM MC Protectors VF-405MP / 49MPAM / 55MPAM / 62MPAM / 67MPAM / 72MPAM / 77MPAM / 82MPAM Body Cap ALC-B1EM

Power Accessories



Rechargeable Battery Pack NP-FW50 Accessory Kit ACC-TRW Battery Charger BC-QM1 AC Adaptor AC-PW20

Tripods / Remote Commander / Memory Cards / Others



Tripod VCT-P300 Remote Control Tripod VCT-VP1 Eyepiece Cup for α6300 FDA-EP10 Eyepiece Cup for α6500 FDA-EP17 LCD Protect Sheet PCK-LS1EM HDMI Cable (Micro) DLC-HEU15/30
Remote Commander RM-VPR1 Remote Commander and IR Receiver Kit RMT-VP1K Remote Commander RMT-DSLR2 Shoe Cap FA-SHC1M SD Memory Card Memory Stick

For details on compatible lenses and accessories, visit the Sony website.