

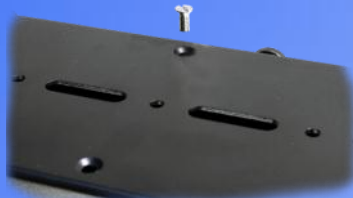
11. For larger cameras the mounting plate may need extending. Loosen the four thumb screws on the camera plate and remove the rear two, the plate will now slide out. Replace the two rear screws and tighten them to secure the plate.



12. For smaller cameras the camera plate will need to be raised. Remove the four thumb screws and then lift off the plate.



13. Install four camera plate pillars of the appropriate height.



14 Re-fix the camera plate using the four screws provided.



Pillar combinations

15. To achieve the maximum height, combine the long and short pillars.

## Camera Fixing



16. Fix the camera in place using the camera screws provided.



17. Connect the power supply and the VGA or video cable.

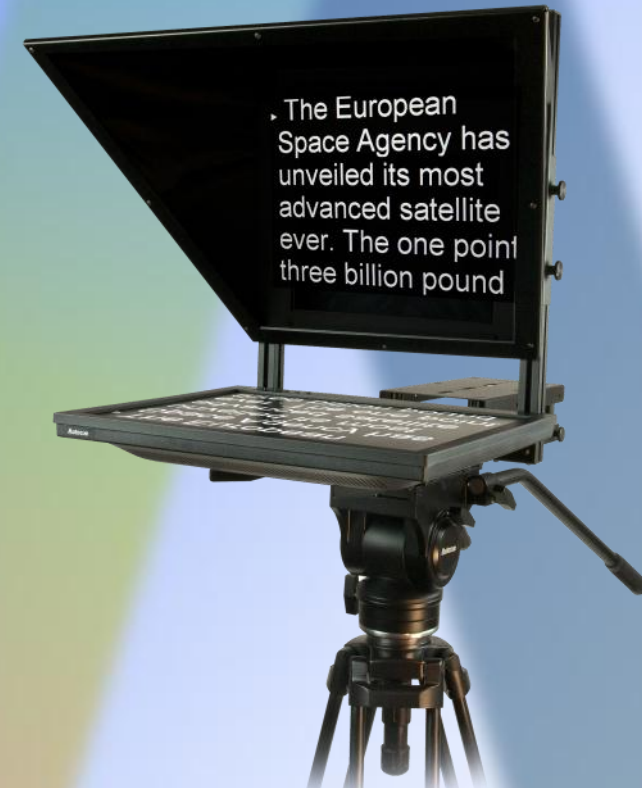


Power Supply

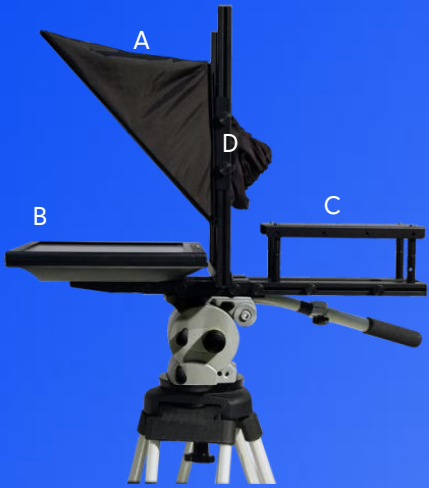


# SSP17

## Guide

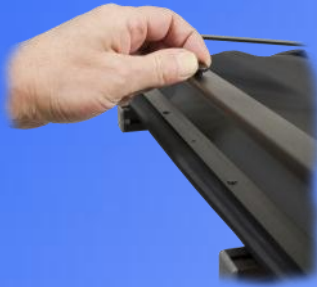


# Components



A	Hood and Glass
B	Monitor
C	Mounting Plate
D	Hood Adjustment

# Glass Installation



3. Remove the three thumb screws that secure the hood frame and open the hood.

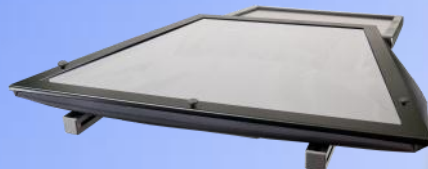
4. Place the glass in the hood and ensure that the glass is located in the recess.



5. The glass is installed with the blue dot facing up. A double image will be seen in the reflection if the glass is not installed correctly.

6. Close the hood and replace the three thumb screws and secure.

Please ensure that the glass is in the recess or the glass may be damaged.



7. The glass is now installed.

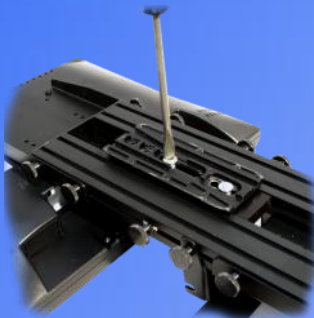
8. Raise the hood and lock it in the upright position by tightening the four thumb screws.



9. The Hood is now locked in the upright position.

# Assembly

1. Fix the hot shoe from your tripod to the underside of the mounting plate. Slide the hot shoe to the approximate position and tighten the screws.



2. Mount the unit on the tripod.

# Mounting the Camera



10. It is important that the camera lens is in the centre of the aperture at the rear of the hood.

This is achieved by raising and lowering the camera mounting plate and hood.