

Camera Fixing



It is important that the camera lens is in the centre of the aperture at the rear of the hood. This is achieved by raising and lowering the camera mounting plate and hood.



1/4" BSW

Camera Screw

Fix the camera in place using the camera screw provided.

Monitor

Connect the power supply and the VGA or video cable.

VGA Cable



Power Supply



Alternative Configuration

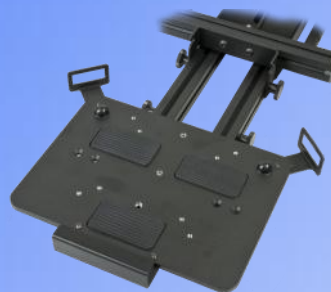
The SSP 10" monitor can be reconfigured to straight read mode. To achieve this remove the hood unit by loosening the two thumb screws of the monitor mount and move the monitor to the vertical position. Remove the monitor from the bracket by removing the 4 screws and refit the monitor in the correct orientation .



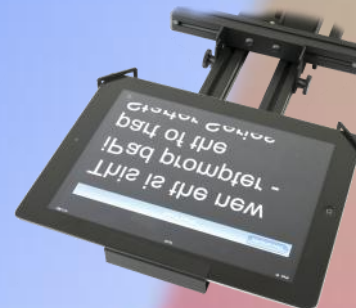
Correct monitor orientation for straight read

iPad Adaptor

By replacing the 10" display with the iPad adaptor it is possible to mount an iPad 1 or 2 and use this as the prompting display.



iPad adaptor

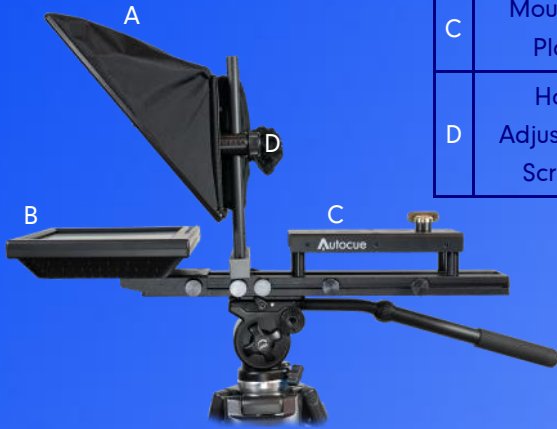


SSP10 Guide



Components

A	Hood and Glass
B	Monitor
C	Mounting Plate
D	Hood Adjustment Screws



2. Fix the hot shoe from your tripod to the underside of the mounting plate. Slide the hot shoe to the approximate position and tighten the screws.



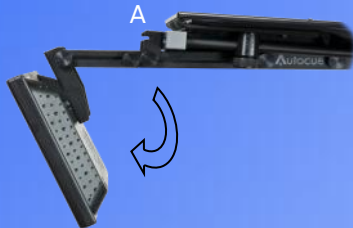
3. Mount the unit on the tripod and raise the hood to the upright position

Assembly

1. Loosen the thumb screws (A) and move the monitor into the horizontal position .



Re-tighten the monitor thumb screws.



4. Move the hood up and lock into position by tightening the four thumb screws (B)



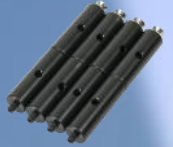
Hood Lock



Unit Complete

Mounting the Camera

1. For larger cameras the mounting plate may need extending. Loosen the four thumb screws on the camera plate and remove the rear two, the plate will now slide out. Replace the two rear screws and tighten them to secure the plate.

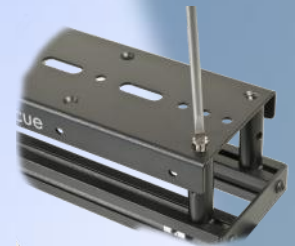


Pillar Kit

2. For smaller cameras the camera plate will need to be raised. Remove the four thumb screws and lift off the plate.



3. Install four camera plate pillars of the appropriate height.



4. Re-fix the camera plate using the four screws provided.



Pillar combinations

To achieve the maximum height, combine two pillars.

