

PM-SAFETY-6DSS

SAFETY ANCHOR

STAINLESS

POLESTAR®



When a pole or column does not offer an adequate way to attach safety cables, specify the PM-Safety-6DSS and corresponding band kit. This mount provides a structural method for anchoring safety cables. It installs above the pole adapter and safety cables are then secured to the safety anchor and each loudspeaker, thus by-passing the pole adapter completely.

For coastal shoreline applications contact customer service for proper stainless materials



STANDARD FEATURES:

- ▶ Provides safety cable anchor point for proper installation
- ▶ All stainless steel construction
- ▶ Load rated components
- ▶ Components use common hole patterns
- ▶ Cosmetic trim components included
- ▶ Job-site ready

SPECIFICATIONS:

Material: 304 Stainless Steel

Finish: Passivated

Color: Silver

WLL: 300 lb / 136.078

*WLL = Working Load Limit

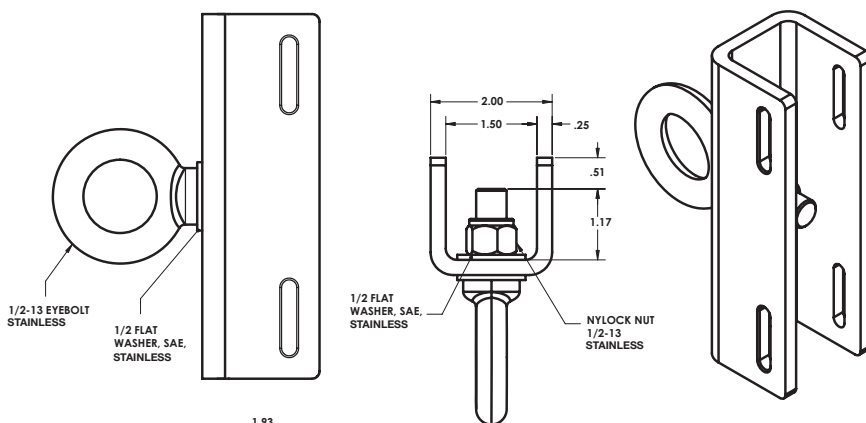
PACKAGE CONTENTS:

1 pc: Channel Mount Bracket

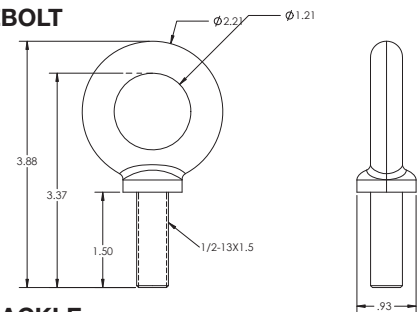
1 pc: Eyebolt 1/2"

1 pc: 3/16" SPA Shackle

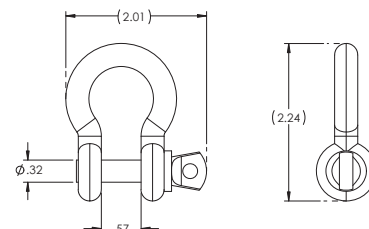
PM-SAFETY-6DSS



1/2" EYEBOLT



3/16" SHACKLE



Rated for outdoor use.

ALWAYS INSTALL SAFETY CABLES

WARNING: Mounting and/or suspension of audio and video equipment requires experienced professionals. Improperly installed loudspeakers can result in property damage, personal injury and/or liability to the installing contractor.

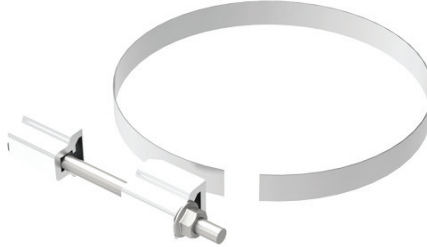
PM-SAFETY-6DSS

STAINLESS

POLESTAR®



PM-BAND-20S



PM-BAND-30



PM-BAND-90

BAND STRAP KITS:

Four different length permanent band kits are available for the PM-Mount- 6UP and - 6DOWN. Standard stock lengths include 20", 30" and 90". Choose from the PM-Band-20, PM-Band-30, PM-Band-60 and PM-Band-90. Each kit contains 2 assemblies. These kits, when used per instructions will support the stated working load of the selected pole adapter.

| Model | Length | Width | Thickness | Max Dia | WLL | Weight |
|----------------|-------------|----------|---------------|-----------|-------------|------------------|
| PM-Band-20S | 20"/50.8cm | .50/13mm | .02 / 0.508mm | 6"/152mm | 150 / 68kg | .7 lb. / .32 kg |
| PM-Band-30 | 30"/76.2cm | .75/19mm | .03 / 0.762 | 6"/152mm | 300 / 136kg | 1.5 lb. / 0.7 kg |
| PM-Band-90 | 90"/228.6mm | .75/19mm | .03 / 0.762 | 25"/635mm | 300 / 136kg | 2.5 lb. / 1.1 kg |
| PM-Band-Custom | SPECIFY | .75/19MM | .03 / 0.762 | SPECIFY | 300 / 136KG | TBD |

SAFETY CABLES:

| Model # | Length (Loop to Loop) Inches/mm | Description QTY & Contents | MATL | Static WLL (lbs/kg) | Style |
|--------------|------------------------------------|--|------|------------------------|-------|
| SC-188-18-SS | 18"/450 | 3/16" Wire Rope 7X19 (2) 1/4" Shackle | SS | 750/ 340 | B |
| SC-188-24-SS | 24"/610 | 3/16" Wire Rope 7X19 (2) 1/4" Shackle | SS | 750/ 340 | B |
| SC-188-30-SS | 30"/762 | 3/16" Wire Rope 7X19 (2) 1/4" Shackle | SS | 750/ 340 | B |
| SC-188-48-SS | 48"/1220 | 3/16" Wire Rope 7X19 (2) 1/4" Shackle | SS | 750/ 340 | B |
| SC-188-72-SS | 72"/1830 | 3/16" Wire Rope 7X19 (2) 1/4" Shackle | SS | 750/ 340 | B |
| SC-188-96-SS | 96"/2438 | 3/16" Wire Rope 7X19 (2) 1/4" Shackle | SS | 750/ 340 | B |



Rated for outdoor use.

ALWAYS INSTALL SAFETY CABLES

WARNING: Mounting and/or suspension of audio and video equipment requires experienced professionals. Improperly installed loudspeakers can result in property damage, personal injury and/or liability to the installing contractor.