

# etyBLU<sup>2</sup>

high-fidelity, noise-isolating bluetooth headset



**User Manual**

## **Introduction**

The Etymotic etyBLU2 noise-isolating headset contains a highly directional noise-canceling microphone. The combination of an in-ear noise-isolating earphone and a directional microphone placed close to the mouth provides exceptional sound quality and clear communication at both ends of the conversation. The etyBLU2 headset was developed by Etymotic Research for use in high levels of background noise.

## **Warranty**

Etymotic Research, Inc. warrants this product against defects in material or workmanship for a period of two years from the date of original purchase from an authorized Etymotic distributor or reseller. Etymotic will repair or replace the defective product at its option if returned within the warranty period to our designated service facility. This warranty is in lieu of all other warranties, expressed or implied, including, but not limited to, any implied warranty of merchantability or fitness for a particular purpose.

## Included

- etyBLU2 noise-isolating headset
- Assortment of eartips
- Earloop
- 2 Windscreens
- Filter removal tool and replacement filter
- USB charging cable

## Bluetooth Profiles

**Compliant with Bluetooth® Core Specification 2.1, Headset 1.1 and Handsfree 1.5 profiles (supports Bluetooth 1.1 and later)**

**Talk Time:** Up to 7 hours

**Standby:** Up to 100 hours

**Range:** 30 feet (10 meters)

**Weight:** Less than .5 oz

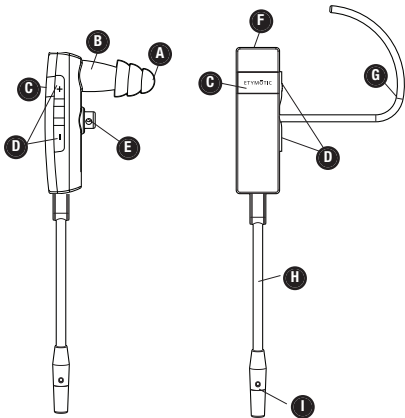
## Caution

In rare instances an eartip may come off in the ear canal when removing the earpiece. If this should occur and the eartip cannot be easily removed, it is recommended that you promptly contact an audiologist or other medical professional. A professional can use blunt tweezers to remove the eartip.

Consult an audiologist or physician if you have excessive ear wax, difficulty inserting the eartips, or discomfort after prolonged use.

Do not use at excessively loud levels. Research confirms that earphones that seal the ear canal allow listeners to listen at safer levels. Noise-induced hearing loss is a function of exposure time, the average sound level and the peak of very loud sounds. A sealed eartip and lower listening levels allow for longer periods of safe listening.

# Identification



- A.** Eartip
- B.** Speaker
- C.** Multi-Function Button (MFB)
- D.** Volume Up/Down
- E.** Earloop Holder

- F.** Charging port
- G.** Earloop
- H.** Boom
- I.** Noise-canceling Microphone

# Charging

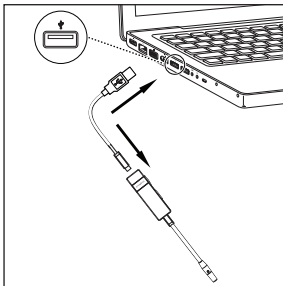
The etyBLU2 headset comes with a rechargeable lithium polymer battery. Charge the headset for at least one hour before first use.

**Charging time from empty:** 2-3 hours

**80% charge:** 1 hour

## Charging with the USB connector (included)

- Plug the micro USB connector into the etyBLU2 headset as shown.
- Plug USB end of the charging cable into a computer USB port.
- The solid yellow LED will indicate that the headset is charging.
- When charging is complete the yellow LED turns blue.



# Pairing

## Pairing varies by device

The etyBLU2 headset is discoverable for five minutes after Power On.

- Turn the phone OFF and then back ON.
- Turn on the mobile phone's Bluetooth function.
- Press and hold the Multi-Function Button (MFB) for 5 seconds.
- The blue LED will flash rapidly when ready for pairing. The etyBLU2 stays in pairing mode for 5 minutes.
- Activate the search for BT and/or audio devices on the phone.
- When the etyBLU2 is found, the phone will display "etyBLU2." Scroll to it and press OK to confirm pairing.
- If a passkey/password is requested, enter 0000.

**Note:** Bluetooth transmitter pairing varies. For best results, consult the user instructions for the specific device being paired with the etyBLU2. Some mobile phones require a security setting change for automatic headset-phone pairing.

# Selecting an Eartip

3-flange



long stem



standard



small

Foam



Glider



The eartip that is most comfortable is the likely choice, but it **MUST SEAL** well in your ear. If you can easily hear others when the volume is off, you don't have a good seal. Twist it in deeper, or choose another eartip.

**When changing eartips make sure the eartip fits securely on the stem of the earphone.**



correct



incorrect



## Insertion

**Important:** Sound quality and noise isolation depend on a good eartip seal.

- Carefully insert the earpiece while pulling up and out on the back of the ear.
- Twist the earpiece while inserting, until outside noise is blocked out.
- Position the earpiece for best fit and comfort.
- Bend the boom so the microphone is close to the mouth.
- **3-flange eartip:** Moistening eases insertion.
- **Foam eartip:** Roll down or compress foam eartip before inserting. Hold the eartip in place for about 5 seconds while the foam expands to create a tight seal in the ear canal.
- **Glider eartip:** Simply push into ear canal.



For a video on proper earphone insertion go to [www.etymotic.com](http://www.etymotic.com)

## Removal

To avoid discomfort, remove the headset slowly with a twisting motion to gradually break the seal. Open jaw slightly to equalize pressure, because suction can occur when the eartip is removed.

# Multi-Function Button (MFB)

## Power ON

**PRESS** the MFB for 4 seconds to Power On. Blue LED is solid for one second while powering ON. Blue LED blinks when the headset is ON.

## Power OFF

**PRESS** the MFB for 4 seconds to Power Off. Yellow LED is solid for one second then powers OFF.

## Volume

**PRESS** the Volume UP (+) and Volume DOWN (-) buttons on the side of the headset to increase or decrease volume. The exact number of volume levels is set and maintained by the phone.

## Answer a Call

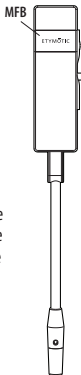
**PRESS** the MFB once quickly (short press) to answer a call when phone rings.

## End a Call

**PRESS** the MFB once quickly (short press) to disconnect the call.

## Reject a Call

**PRESS** and **HOLD** the MFB (long press) for one second to reject an incoming call.



# Multi-Function Button (MFB)

The following features depend on phone support:

- Redial**                      **PRESS** and **HOLD** the MFB (long press) for one second.
- Voice Call**                **PRESS** the MFB quickly (short press) to make a voice call. Voice Call works when the unit is in standby.
- Transfer a Call to the Handset**      **Double PRESS** the MFB (two quick presses less than one second) during a call
- Call Waiting**              • **PRESS** and **HOLD** the MFB (long press) for one second to put a call on hold to answer another  
• **PRESS** and **HOLD** the MFB (long press) for one second to switch between calls  
• **PRESS** the MFB quickly (short press) to end the current active call  
• **DOUBLE PRESS** to reject a call-waiting call
- 3-Way Calling**            **Add another caller:** Depending on the call status, double press the MFB to add the held call to the conference.

# Changing the Filter

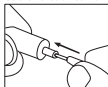
The earpiece in the etyBLU2 headset has a special filter that smoothes the frequency response and prevents earwax from entering the earphone. The filter is located at the end of the earphone and is visible when the eartip is removed.

Change the filter if loudness decreases or the sound quality declines. **Note:** Filters are not reusable.

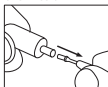
## Filter Removal **Note:** Use the tool to remove the filter.



1. Remove eartip.



2. Insert tool into the filter.



3. Remove filter.

## Filter Replacement **Note:** Do not use the tool to replace filter.



1. Insert a new filter and press gently against a hard surface to secure it in place.



2. Re-attach eartip.

## Care

- Do not expose to extreme temperatures.
- Avoid dropping and strong impact.
- Leave eartip on the headset for shock protection.
- Clean or replace eartips prior to use by others.

## Cleaning and Replacing Eartips

Over time eartips may lose their elasticity. For best performance and retention, replace 3-flange eartips every 3-6 months. Replace foam and glider eartips regularly.

### **To clean the 3-flange eartips:**

1. Remove the eartip from the headset.
2. Clean with water and mild soap.
3. Dry the eartip before placing it back on the headset.

## FCC & Other Information

This equipment has been tested and found to comply with the limits for a Class B digital device, pursuant to Part 15 of the FCC Rules. Operation is subject to the following two conditions:

1. This device may not cause harmful interference, and
2. This device must accept any interference received, including interference that may cause undesired operation. These limits are designed to provide reasonable protection against harmful interference in a residential installation. Some equipment operates at frequencies that may cause interference to nearby TVs and VCRs; to minimize or prevent such interference, the system base should not be placed near or on top of a TV, PC monitor, or VCR; and, if interference is experienced, moving the desk station farther away from the TV or VCR will often reduce or eliminate the interference. However, there is no guarantee that interference will not occur in a particular installation. If this equipment does cause harmful interference to radio or television reception, which can be determined by turning the system off and on, the user is encouraged to try to correct the interference by one or more of the following measures:
  1. Increase the separation between the equipment and receiver.
  2. Consult the dealer or an experienced radio TV technician for help.

# FCC & Other Information

## FCC Health and Safety Information

Your device is a radio transmitter and receiver. It is designed and manufactured not to exceed the emission limits for exposure to radio frequency (RF) energy set by the Federal Communications Commission of the U.S. Government. The FCC has established criteria for the amount of radio frequency energy various products may produce depending on their intended usage. This product has been evaluated and found to comply with the FCC's exposure criteria. For body worn operation, the FCC RF exposure guidelines were also met when used with the accessories supplied or designed for this product. Use of other accessories may not ensure compliance with FCC RF exposure guidelines and should be avoided. Caution: Any changes or modifications not expressly approved by the party responsible for compliance could void the user's authority to operate this device. This device must not be colocated with other transmitters.

# LED Chart

**Power ON** Blue LED is solid for one second while powering on

---

**Power OFF** Yellow LED is solid for one second then powers off

---

**Pairing** Blue LED blinks twice every 3 seconds

---

**Active call** Blue LED blinks once per second

---

**No active call** Blue LED blinks every 4 seconds

---

**Charging** Solid yellow LED

---

**Low battery** Blinking yellow LED

---

**Charge complete** Solid blue LED

---

## ETYMOTIC RESEARCH INC.

61 Martin Lane • Elk Grove Village, IL 60007  
[www.etymotic.com](http://www.etymotic.com) • 1-847-228-0006

©2010.

etyBLU2 is a trademark of Etymotic Research, Inc. Bluetooth is a registered trademark of Bluetooth SIG, Inc.

ER089402