

WPS Pro

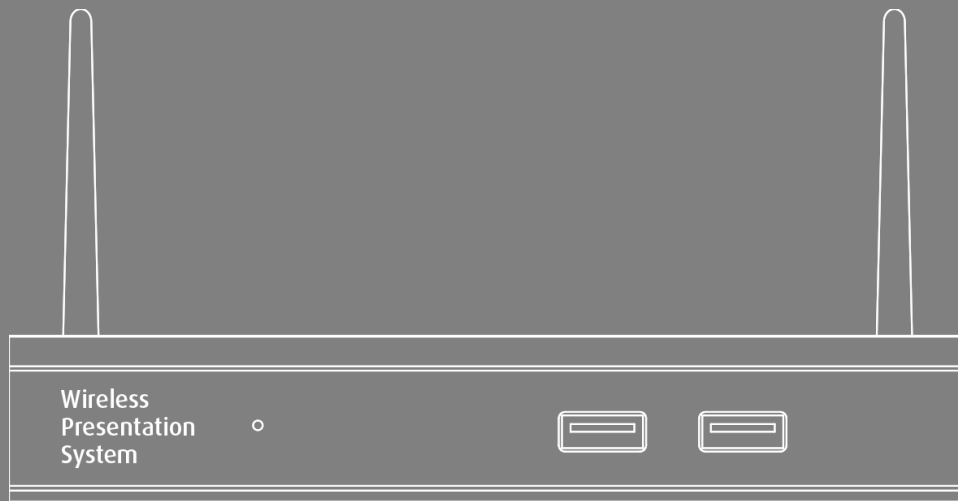


Table of Contents

1	Overview	4
2	Package Contents.....	5
3	USB Token Contents.....	5
4	Physical Details.....	5
5	What You Might Need	6
6	Quick Installation.....	7
7	WPS Start/Standby Page.....	8
7.1	Quick Guide / User-List	8
7.2	Screen Saver.....	8
8	DoWiFi for Windows	9
8.1	Install the application.....	9
8.2	Start the application.....	10
8.3	Quick Connect.....	10
8.4	Connect to WiFi Network.....	11
8.5	Connect to Receiver Device.....	12
8.6	Login.....	13
8.7	Main User Interface	13
8.8	Screen Projection	13
8.9	Login code.....	14
8.10	Menu	14
8.10.1	Show Receiver Information	15
8.10.2	Web Admin	15
8.10.3	Search Receiver Device.....	15
8.10.4	Launch SidePad	16
8.10.5	Launch WebSlides	17
8.10.6	Select Projection Desktop	18
8.10.7	Projection Quality	18
8.10.8	Projection Mode	19
8.10.9	Resolution Settings	19
8.10.10	Projection Aspect Ratio	19
8.10.11	Enable USB IWB Bridge.....	19
8.10.12	Advanced Screen Capture	19
8.10.13	Send Audio to Display.....	20
8.10.14	Auto Power Manager	20
8.10.15	Auto WiFi Connect	20
8.10.16	Make WPS Token.....	21
8.10.17	Copy Application to desktop.....	21
8.10.18	Hot Key	21
8.10.19	About	21
8.10.20	Exit	213
9	DoWiFi for Mac	23
9.1	Install the application.....	23
9.2	Start the application.....	23
9.3	Quick Connect.....	24
9.4	Connect to WiFi Network.....	24
9.5	Connect to Receiver Device.....	26
9.6	Login.....	26
9.7	Main User Interface	27
9.8	Screen Projection	27
9.9	Login code.....	28










9.10	Menu	28
9.10.1	Show Receiver Information	29
9.10.2	Web Admin	29
9.10.3	Search Receiver Device	29
9.10.4	Launch SidePad	29
9.10.5	Launch WebSlides	31
9.10.6	Select Projection Desktop	32
9.10.7	Projection Quality	32
9.10.8	Select Projection Mode	32
9.10.9	Resolution setting	32
9.10.10	Projection Aspect Ratio	33
9.10.11	Send Audio to Display	33
9.10.12	Auto WiFi Connect	33
9.10.13	Hot Key	33
9.10.14	About	33
9.10.15	Exit	33
10	Web Management	34
10.1	Home Page	34
10.2	Download	34
10.3	Conference Control	35
10.4	Admin	36
10.4.1	System Status	37
10.4.2	Device Setup	37
10.4.3	Network Setup	38
10.4.4	OSD Setup	40
10.4.5	Change Passwords	41
10.4.6	Reset to Default	42
10.4.7	Firmware Upgrade	42
10.4.8	WebSlides Setup	43
10.4.9	Reboot System	44
10.4.10	Logout	44
10.5	WebSlides	45
11	Appendices	46
11.1	Optoma Global Offices	47

1

Overview

WPS Pro is professional wireless presentation gateway. By enabling the Revolutionary “interactive” and “wireless” functions, you can throw your presentations wirelessly from a PC, Mac, iPad, iPhone, or Android devices to a projector! And use your pad, tab or phone to control your PC/Mac, or view the presenting slides!

WPS Pro Features Highlight:

Icon	Feature	Description
	DoWiFi	Wireless presentation for Windows and Mac ◆ Win: XP/Vista/7/8, ◆ Mac: 10.6/10.7/10.8/10.9
	Plug&Show	No software installation required. Just plug in the USB drive to your PC.
	MirrorOP Sender for Galaxy	MirrorOp sender for Samsung Galaxy series devices Support. Users can project any contents from their Samsung Galaxy devices.
	MirrorOp Presenter	High quality presentation and annotation via iPhone/iPad or Android devices (Word, Excel, PPT, PDF , Photo , Browser, Live Camera, Screenshot)
	SidePad	Control the projecting screen on PC or Mac via iPhone/iPad or Android devices through MirrorOp Receiver APP.
	WebSlides	Broadcast slides to your devices with WiFi and web browser. ◆ Audience can save the projecting slides for taking notes. ◆ Webslides can be secured by password.
	Quadrant Projection	Project four PC/Mac screens or MirrorOp Presenter content to one projector/display at once.
	OSD User-List	Control projection from WPS Pro web page, or use mouse to select a User from the standby screen.
	SNMP Manager	Manage WPS devices across the corporate network through enhanced SNMP V2 protocol

Basic Features

- Wireless screen and audio projection
- Remote desktop control feature
- Support Windows Win 8, Win7, Vista, XP
- Support Mac version 10.7 and above
- Plug and Show! No installation required ... just plug in the accompanied token to a USB port, and hassle free presentation can be started in seconds. (Windows)
- MirrorOp Presenter Supportive for iOS/Android mobile devices
- Up to 30FPS high speed 4-to-1 Split Screen Projection. Turn one projector into four, increase meeting productivity right away.
- Conference control! Allows moderators to streamline grand meetings.
- Provide session security login, wireless WEP/WPA/WPA2 key and Gatekeeper function to protect presentation contents and keep good security to office networks.
- Web management including software download and device settings
- Support WiFi AP-Client Mode

2

Package Contents

- WPS Pro Box
- WPS Pro USB Token
- Power Adapter (DC +5V, 2.6A)
- WiFi Antenna x 2
- Wall-mount kit
- Basic user manual

3

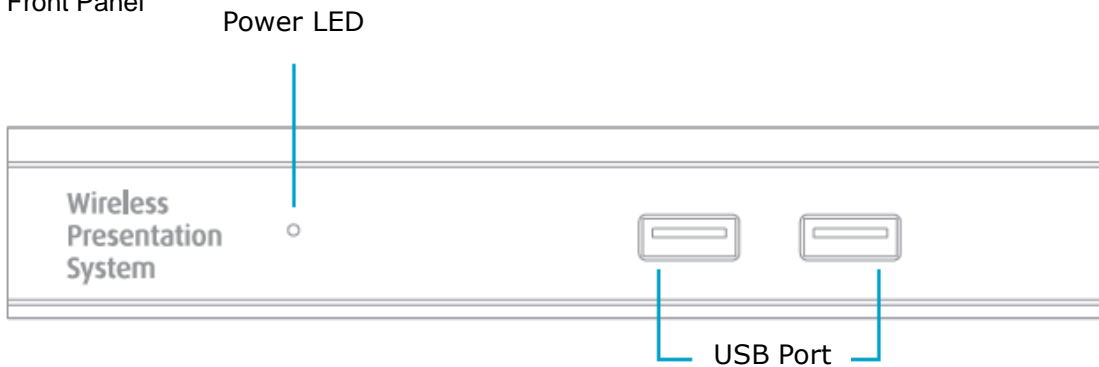
USB Token Contents

- Windows Installer (WPS Windows Installer)
- Mac Installer (WPS Mac Installer)
- VAC Driver (For Windows XP Audio Projection)
- VDD Driver (For Windows XP/Vista Virtual Extended Screen)
- USBoIP Driver (For IWB feature)
- User Manual
- WPS Execution File
- SVS Driver (For Mac Virtual Extended Screen)
- Utility
 - PtG Converter (For MobiShow PtG function)
 - SNMP Manager (For SNMP Management)

4

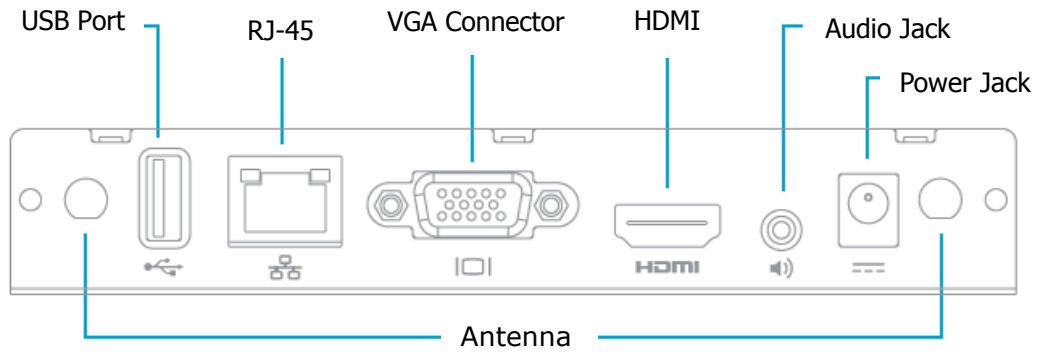
Physical Details

- Front Panel



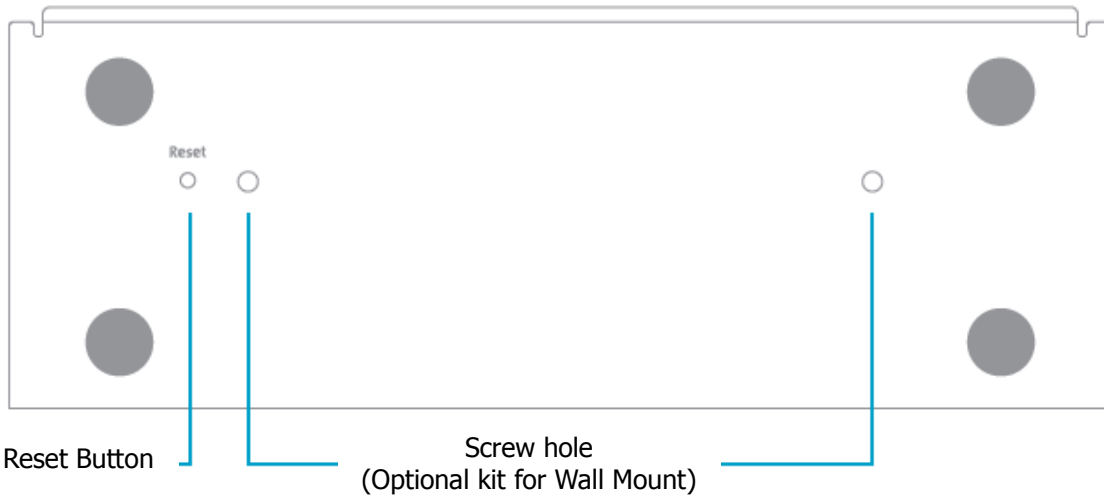
	Description
Power LED	LED Indicator: System Loading(Red), Ready(Green)
USB Port (Front)	USB port for USB mouse and keyboard

- Rear Panel



	Description
Antenna	WiFi Antenna
USB Port (Rear)	USB port for USB IWB device (HID type)
RJ-45	10/100M RJ-45 port
VGA Connector	VGA connector
HDMI	HDMI Connector
Audio Jack	Audio Jack (3.5mm)
Power Jack	Power Jack (5V/2.6A)

- Bottom Side



	Description
Screw Hole	Screw Hole for Wall Mount Kit
Reset Button	Press reset button and power on the device to execute Hardware Reset.

5

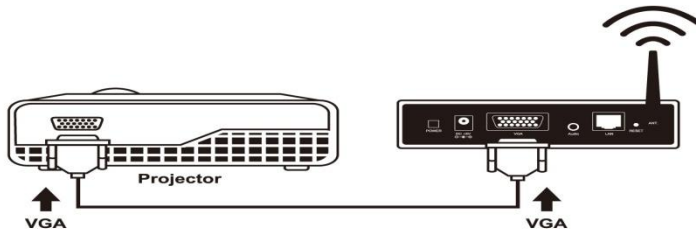
What You Might Need

- Projector or HDTV with VGA/HDMI interface
- Windows or Mac PC/Laptop
- Apple iPhone, iPad or iPod-touch device
- Android Phone or Tablet device
- Speaker (Optional, for audio projection feature)
- USB Mouse and Keyboard (Optional, for remote desktop feature)
- USB HID IWB Device (Optional, for IWB over IP feature)

6

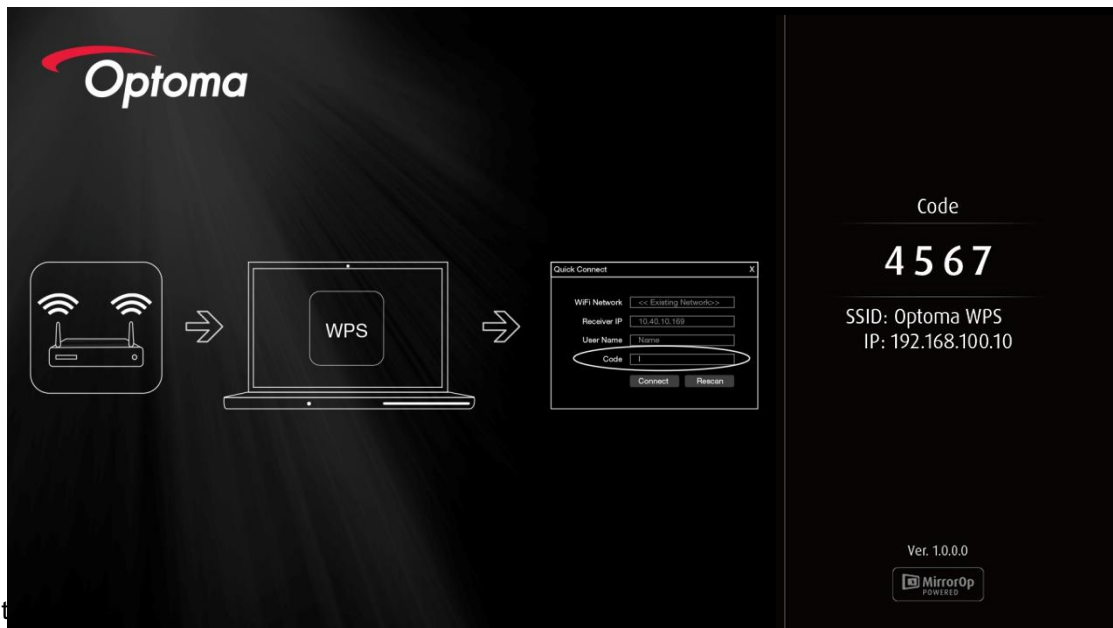
Quick Installation

- 1) Connect WPS device to Projector/display through VGA/HDMI port and turn on projector/display power.



- 2) Connect the power adaptor to WPS device and press the power button to turn on WPS device. System will be ready when the LED light turns to green.

- ◆ It will show the default standby screen as below when system is ready.



- 3) Insert the power adaptor to WPS device.
- 4) Insert the USB mouse or keyboard to WPS Pro front/rear USB port for On-Screen Display (OSD) control. (Optional)
- 5) Insert the USB IWB/Touch Screen cable to WPS Pro rear USB port for IWB remote touch control if needed. (Please noted that the front 2 USB ports do not support UoIP function).

7

WPS Start/Standby Page

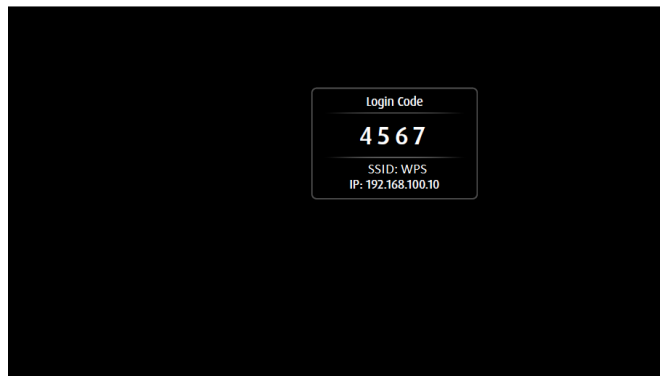
7.1 Quick Guide / User-List

- 1) Connect WPS Pro device to Projector/Display through VGA/HDMI port and turn on Projector/Display power.
- 2) It will show the Quick Guide Information, WiFi Network Name, IP Address and Code on standby screen.
- 3) If there is sender connected to WPS Pro device, it will show the User-List on standby screen, conference moderator can use the USB mouse to select the User and control it remotely.



7.2 Screen Saver

- 4) System will enter the Screen Saver mode if none is connected, it will restore to standby status immediately when there is any sender connected.



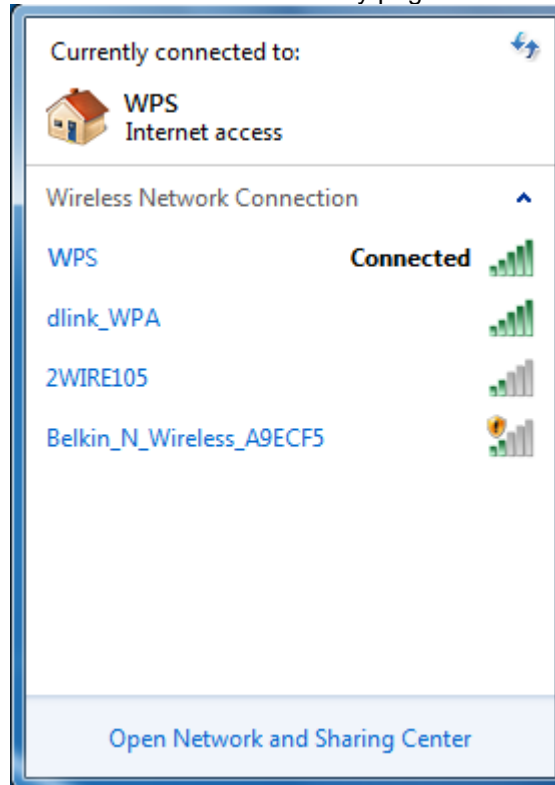
8

DoWiFi for Windows

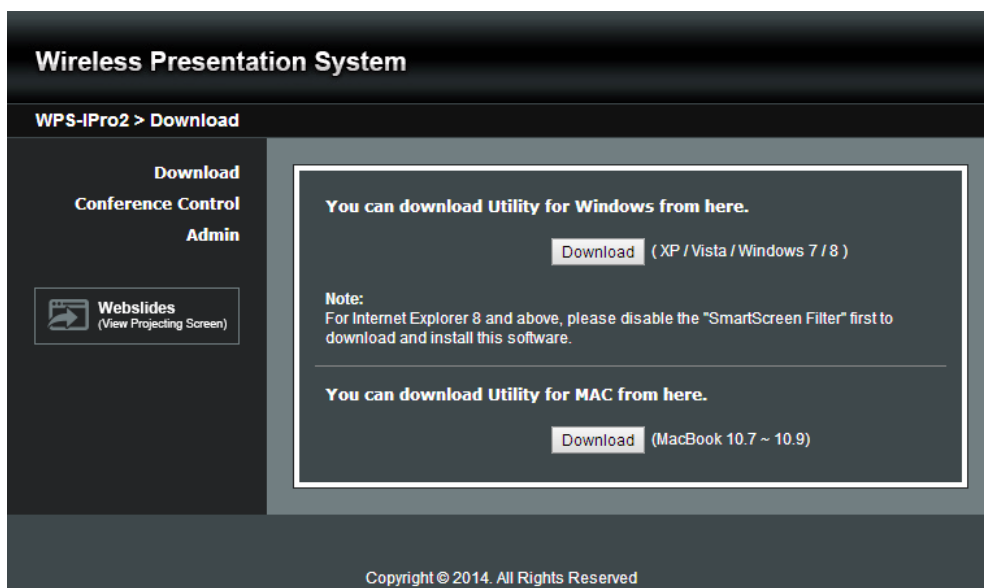
(Do Not Support Windows Phone, Windows RT)

8.1 Install the application

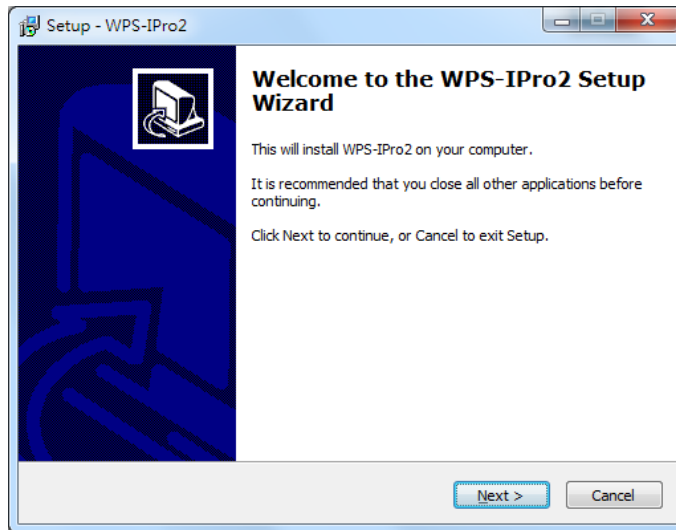
- 1) Make sure your PC WiFi is enabled already, and connect your PC to WPS box through WiFi. You can find the WiFi name of your WPS box information on the start/standby page.



- 2) Launch your browser and enter the Device Host Name (SSID) or IP address in the browser. You can find the IP address and Host Name (SSID) on the projector/display screen. **(Default Host Name (SSID) is WPS, Default IP is 192.168.100.10)**
- 3) Download the WPS software for "XP/Vista/Windows 7 / 8" and install on your PC. (Ps. You can also launch the application from USB token directly.)



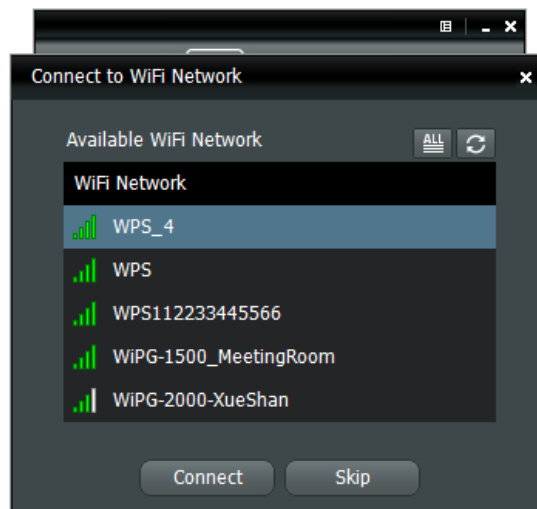
- 4) When the download is completed, follow the WPS Setup wizard to execute the software.
(Make sure your Wifi have connected to WPS and your PC's personal firewall allows WPS software to pass through.)



8.2 Start the application

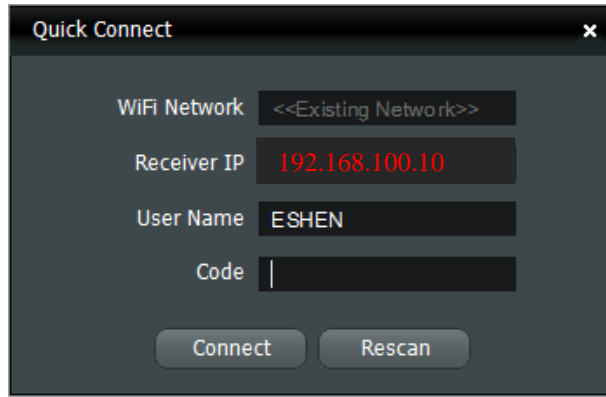


- 1) Click WPS icon on desktop to execute the application, or launch the application from USB token directly. (You can find the WPS-IPro2.exe under WPS-IPro2 folder).
- 2) It will start to search WPS receiver automatically.



8.3 Quick Connect

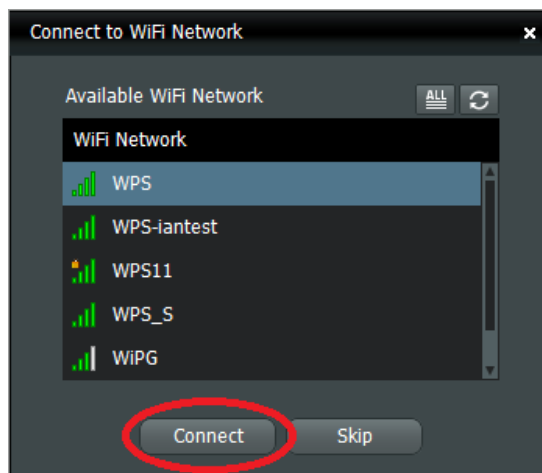
- 1) WPS will memorize the last successful connection profile and open the quick connect dialog, you can enter the code (you can find the information on the standby screen or start screen) and press the "Connect" button to connect this WPS directly.



2) If you want to connect to another WPS receiver, please press the “Rescan” button.

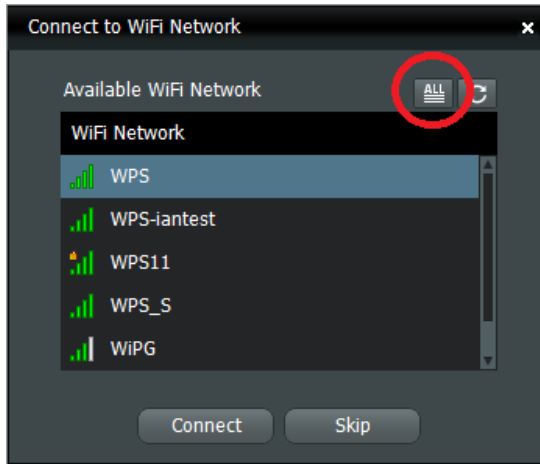
8.4 Connect to WiFi Network

1) WPS application will search the available WiFi Network and list the WPS WiFi Device. You can select a network and press the “Connect” button to connect the selected WiFi Device.

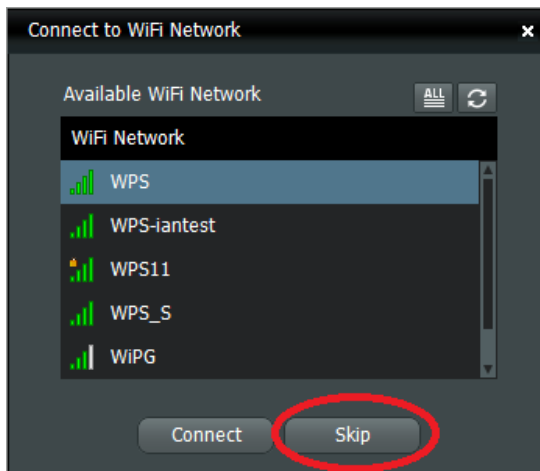


2) You can press the “Refresh” button to search again or press the “All” button to list all available WiFi Network name.



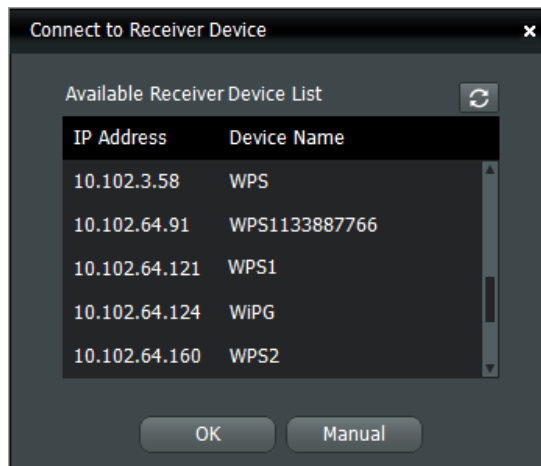


- 3) If you don't like to change the WiFi Network and want to keep the connection to current network, you can press the "Skip" button.

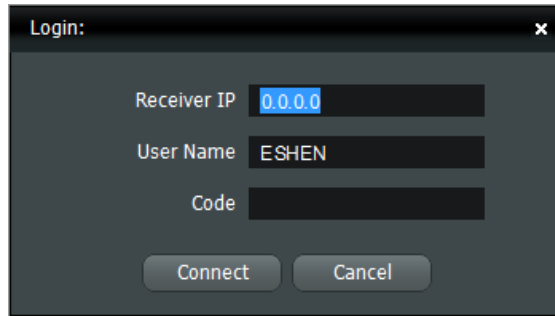


8.5 Connect to Receiver Device

- 1) WPS application will search and list the WPS receiver Device. You can select the target receiver device and press "OK" button to connect the selected receiver device.

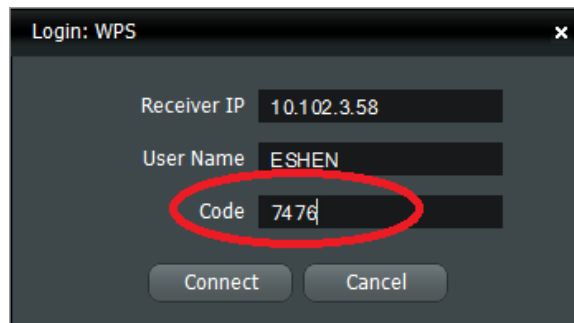


- 2) You can press the "Refresh" button to search again.
 3) If you can't find the target receiver device from the list, you can press the "Manual" button to enter the receiver IP address manually and connect.



8.6 Login

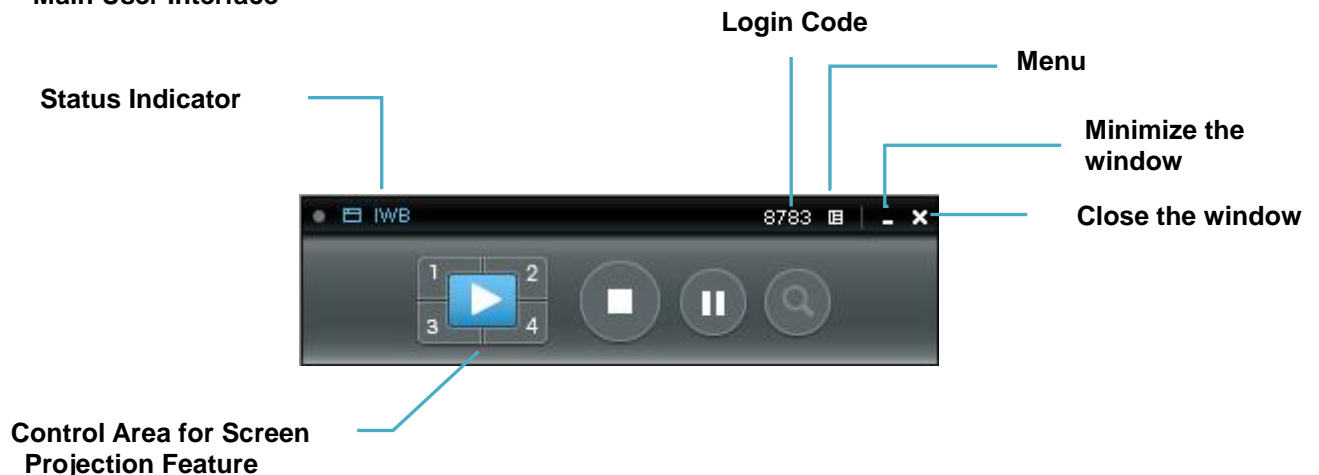
- 1) When connecting to a “Code” protection enabled WPS receiver, you have to enter the “Code” and press the “Connect” button to login the receiver.
(You can find the CODE from the OSD standby screen or right-upper corner of start screen)



(Enter the code into the circled area)

- 2) If you want to connect to another receiver or cancel the login, please press the “Cancel” button.









8.7 Main User Interface




8.8 Screen Projection

- 1) Click the “Play” button for full or “1,2,3,4” for split screen projection, you can project the main screen on to the display immediately. Click the “Pause” button, you can freeze you projection screen, and click the “Stop” button to stop projecting your screen.



Button	Description
	Full Screen projection (Support audio projection)
	Project to Split #1 (Support audio projection)
	Project to Split #2 (No audio projection)
	Project to Split #3(No audio projection)
	Project to Split #4(No audio projection)
	Stop projecting
	Pause projecting
	Enable the Magnifier function

Note:

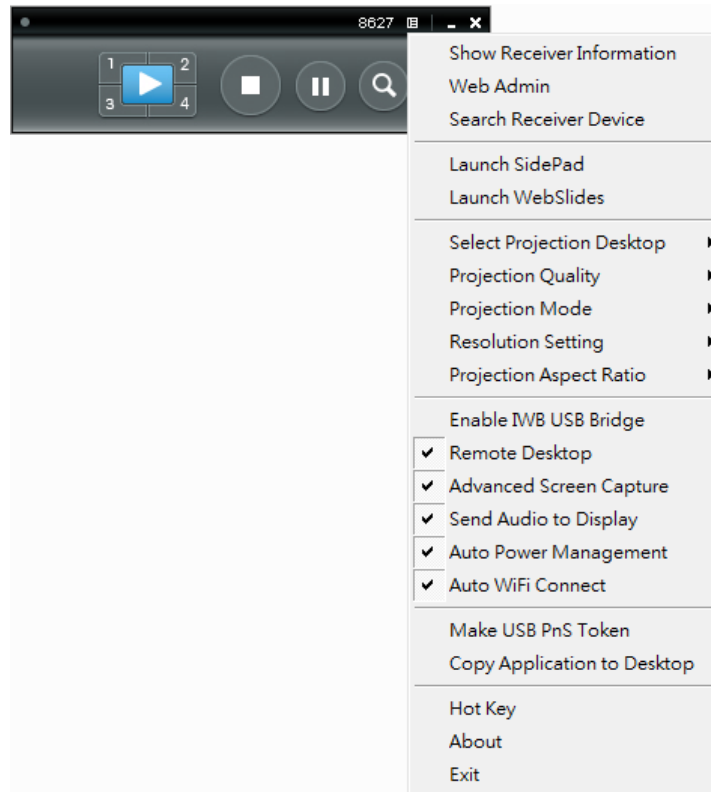
When projecting in full screen projection, if another user is clicking on the play  button, the new user's screen will replace the previous user's screen for projection.
 When projecting in Quad view mode, if another user is clicking on the selected screen button(#1, #2, #3, #4), the new user's screen will replace the previous user's screen for projection.

8.9 Login code

Press on the login code, you can find the device IP address, SSID name and login code on the right of sidebar. The information will disappear after 30 seconds. When there are other users trying to login to the device, the information will pop up automatically for seconds and disappear again as well.

8.10 Menu

- 1) Press "Menu" button from the main UI, you will find the menu to enable the additional feature or to change the application options.



2) You can click on the below function for extending menu to choose one to suit your needs.

Function
Select Projection Desktop
Projection Quality
Projection Mode
Resolution Setting
Projection Aspect Ratio

3) The below items are checked as default setting. You can uncheck them to suit your needs.

Item
Advanced Screen Capture
Send Audio to Display
Auto Power Management
Auto WiFi Connect

8.10.1 Show Receiver Information

1) Click on “Show Receiver Information”, it will display the Receiver Information, such as WiFi Name, IP Address and code on the upper corners of the projecting screen, and it will close automatically after 30 seconds.

8.10.2 Web Admin

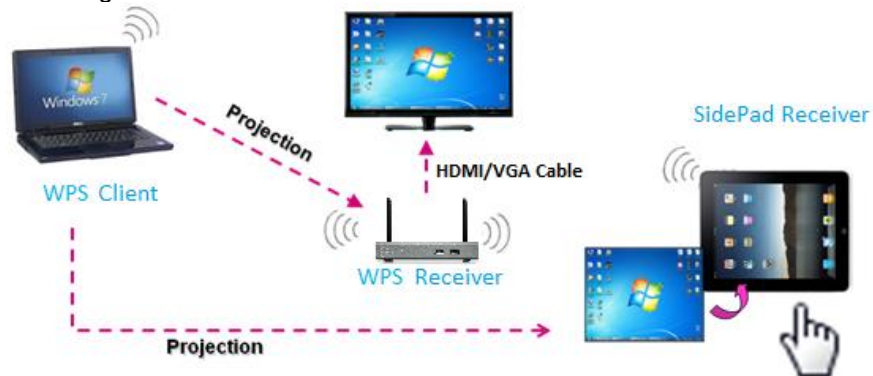
1) Click on “Web Admin”, it will open the browser and connect to the receiver web admin page automatically. (You can find more details of web admin page in Chapter 10-Web Management.)

8.10.3 Search Receiver Device

1) Click on “Search Receiver Device”, it will disconnect from current receiver and search the receiver again.

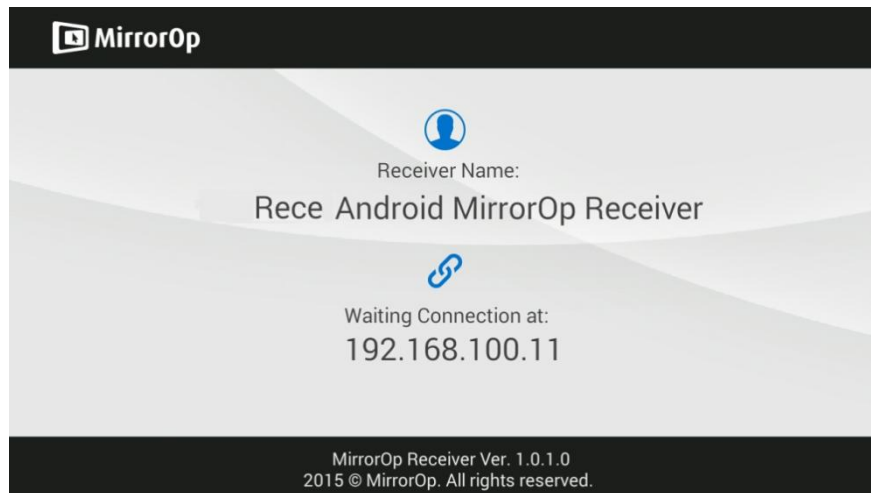
8.10.4 Launch SidePad

1) **Introduction:** MirrorOp Receiver is an application to allow the user to connect Pad/Smartphone (Android and iOS), PC, and display/projector via WPS device. User can then control the projecting PC via Pad/Smartphone. Please refer to the below image for more information.



2) MirrorOp Receiver Control for Android/iOS device.

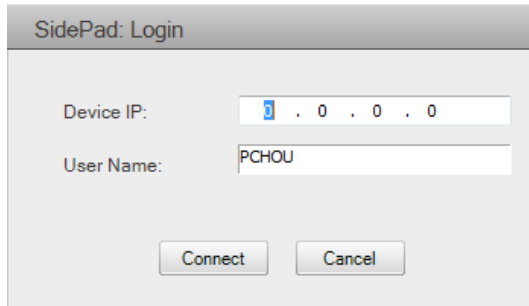
- Android: Download "MirrorOp Receiver" from Google Play Store
- iOS: Download "MirrorOp Receiver" from Apple Store.
- Connect your Android/iOS device to WPS device through WiFi and Launch "MirrorOp Receiver"



- Click on "Launch SidePad" from the menu. In seconds, you shall see the PC desktop shown on the iOS/Android Device. Now you can control the projecting PC from your iOS/Android device.



- 3) If there is no Smartphone/Pad device detected after clicking on “Launch SidePad” the below image will show up.



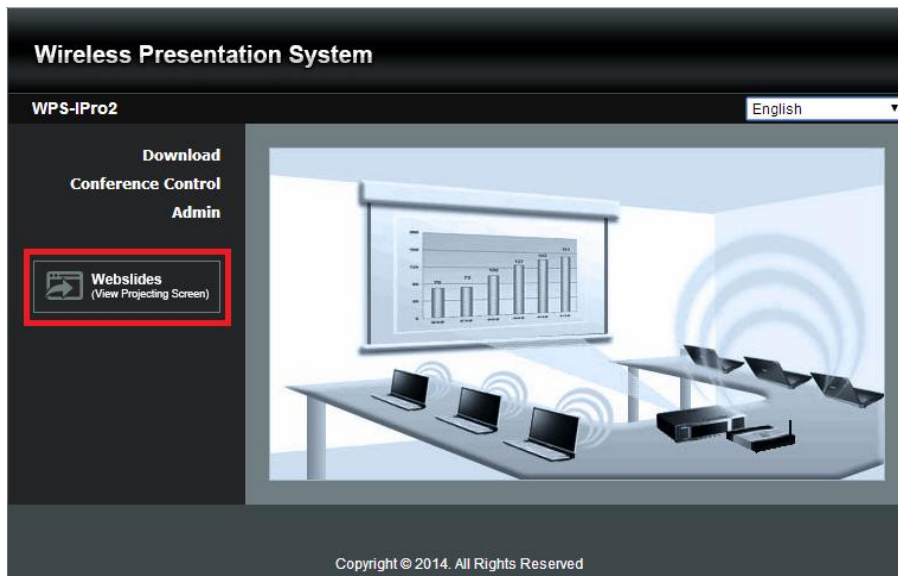
8.10.5 Launch WebSlides

Introduction: Webslides is an application to allow the user/presenter to broadcast the projecting screen/slides to allow multiple login users to receive the slides during a presentation and save the slides for note taking later.

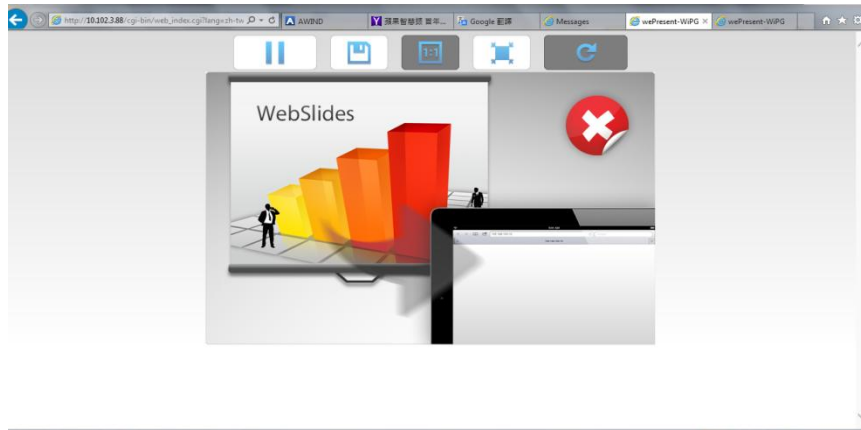
Note: Webslides is not available when Quad view is in use.



- 1) **Presenter:** Make sure your PC/Mac is connected to WPS box and click on “Launch Webslides”, when the function is on, the item will be checked on the main menu.
- 2) **Audience:** Users need to connect to WPS WiFi Network as the presenter and then launch their browser and enter WPS IP address (The information can be found on the projecting screen) on the URL of browser. Once the users are connected, they will see the below image on their devices. Click on “Webslides” button. See below:



- 3) Start to receive the presenter's slides. The below image can be seen on the audience's browser.



Users can put the mouse/finger on each button to get the “tip window” for the function of each button.

Note:

The WPS logged-in user is not identical to WebSlides user, and they both consume the wireless bandwidth for device connection. If there are more than 10 users logged into WPS, it is recommended to connect WPS to company network through Ethernet or bridge WPS to a router due to wireless bandwidth concern. User should connect WPS via company network or router in order to secure the projection performance. The WebSlides user number should not exceed the recommended number on the web management page to prevent the connection failure or low projection performance.

PS. Wireless Projection function and Conference Control function can support up to 64 users.

8.10.6 Select Projection Desktop

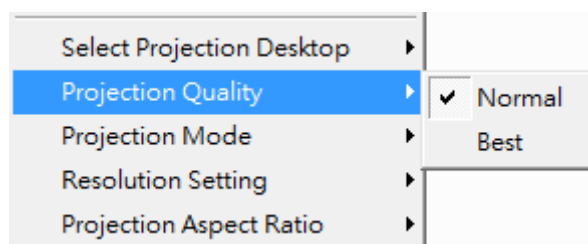
1) Click on “Select Projection Desktop”, you can select to project the main screen or the extended screen.



- Note:**
1. For Windows XP system, you need to install “VDD.exe” driver first, you can find it from USB token.
 2. For Windows 7/Vista Starter edition, it can’t support extended screen.
 3. For some Win7/Win8 laptop/tablet, the extended screen feature is not supported if the display card can’t support the extended screen function. This typically can be verified by checking whether it can enable the extended screen through physical VGA cable, if yes, then it should work with WPS software.

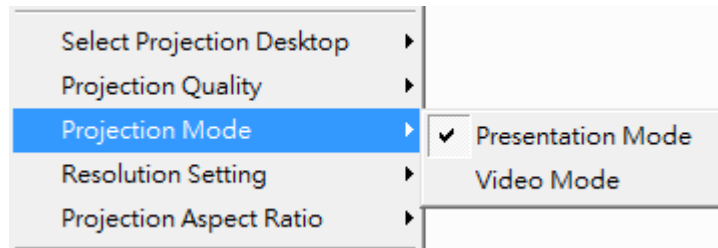
8.10.7 Projection Quality

1) Click on “Projection Quality”, choose “Normal” for faster projection speed with lower screen image quality, and “Best” for clear screen image quality but slower projection speed.



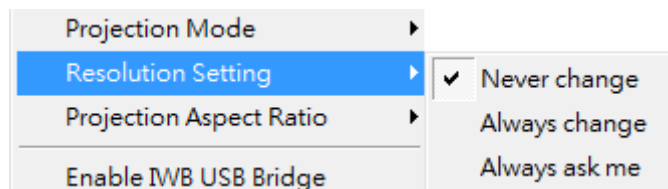
8.10.8 Projection Mode

- 1) Click on “Select Projection Mode”, choose the Presentation mode for shortest latency or the Video mode for auto-latency control to have better video performance.



8.10.9 Resolution Settings

- 1) Click on “Resolution Setting”, choose “Never Change” to keep original desktop resolution, “Always Change” to change resolution automatically according to application’s recommendation, or “Always ask me” to prompt a resolution change message to user.



8.10.10 Projection Aspect Ratio

- 1) Click on “Projection Aspect Ratio”, choose “Keep aspect ratio” to keep the original aspect ratio if the desktop resolution is different from WPS output resolution, or choose “Fit full screen” to project the screen to full screen.



8.10.11 Enable USB IWB Bridge

- 1) Click on “Enable USB IWB Bridge”, it will enable the USB IWB Bridge feature.
- 2) When you start the full screen projection, it will bridge the IWB device to your PC wirelessly.

Note: You have to install the USB oIP driver first. You can find the driver from USB token.

8.10.12 Advanced Screen Capture

- 1) Click the “Advanced Screen Capture”, you will be able to see tip windows and other layered windows (include the main UI) on the connected display.
However, the mouse cursor may blink from time to time when you are projecting your PC screen!
- Disable “Advanced Screen Capture”.



Tip windows is not shown in projector

- Enable “Advanced Screen Captu



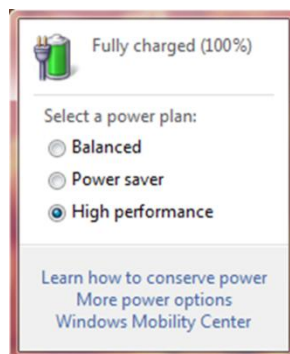
Tip windows is shown in projector

8.10.13 Send Audio to Display

- 1) Click on “Send Audio to Display” to start the audio projection feature. It will mute your local speaker during the projection and restore it when it closes the application. The audio will be bridged to your display device.
Note: For Windows XP system, if you can't hear the audio, please install the Audio driver (“VAC.exe”, Virtual Audio Control Driver) on your computer first, you can find the software from USB Token.
 (Windows Vista, Win7 and Win8 is not necessary to install VAC driver)

8.10.14 Auto Power Manager

- 1) To make the highest projection performance, application will turn the PC's windows power scheme from current settings to “highest performance”, however, you can click on “Auto Power Manage” to enable or disable this function and restore you power scheme immediately.
- 2)

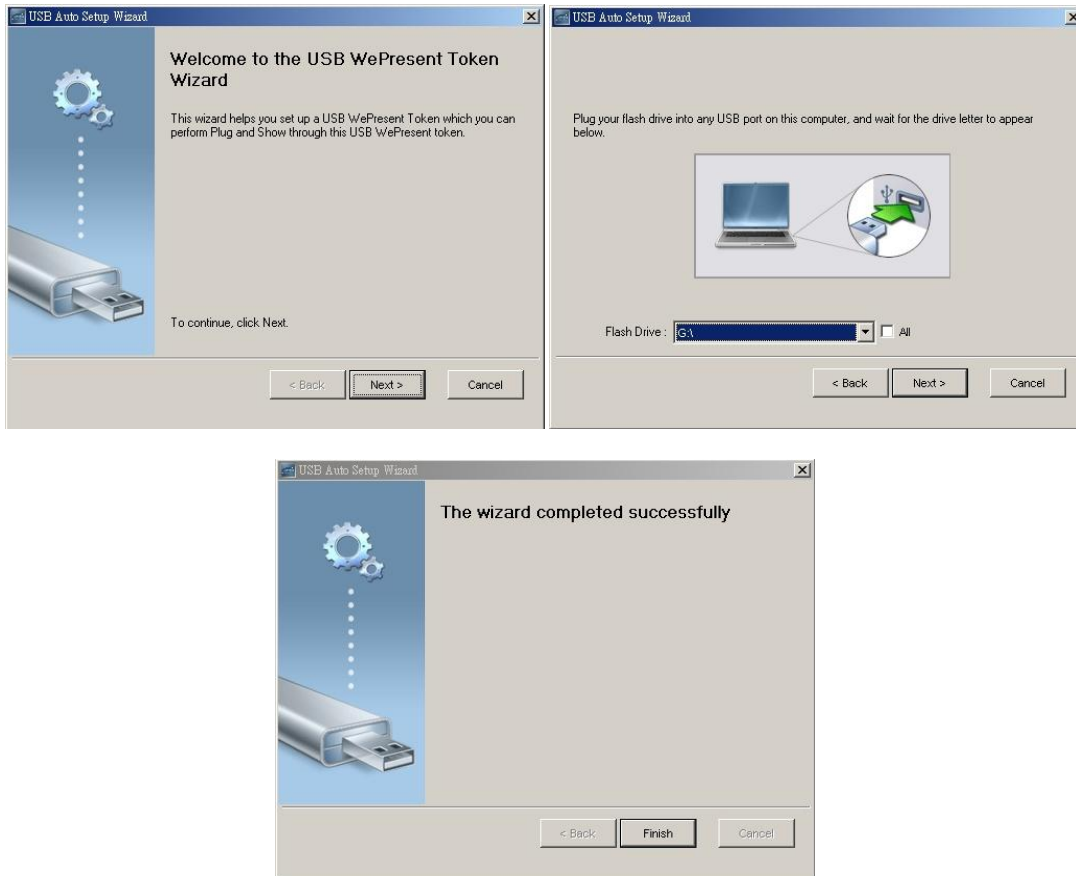


8.10.15 Auto WiFi Connect

- 1) Click on “Auto WiFi Connect” to enable the WPS WiFi connection automatically.

8.10.16 Make WPS Token

- 1) Click “Make USB PnS Token” to make a USB WPS Token, you can insert a USB and follows the wizard to make the Token. After completion, you can plug the USB to any PC to do the projection without installing the WPS software onto every PC.



8.10.17 Copy Application to desktop

- 1) Click on “Copy Application to desktop”, it will copy the application to your desktop immediately.

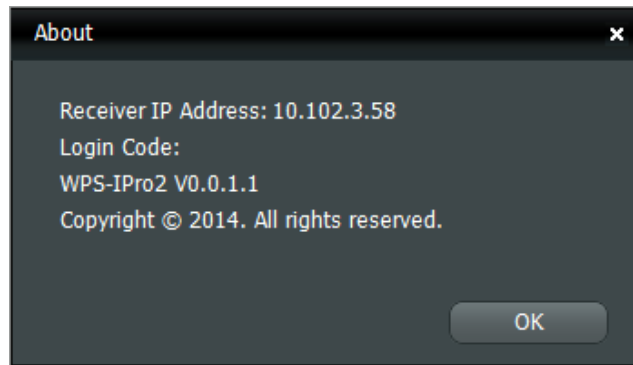
8.10.18 Hot Key

- 1) Click on “Hot Key” to display the available Hot Key definition.



8.10.19 About

- 1) Click on “About” to show system information. It includes product model name, Application version, IP address and other information.



8.10.20 Exit

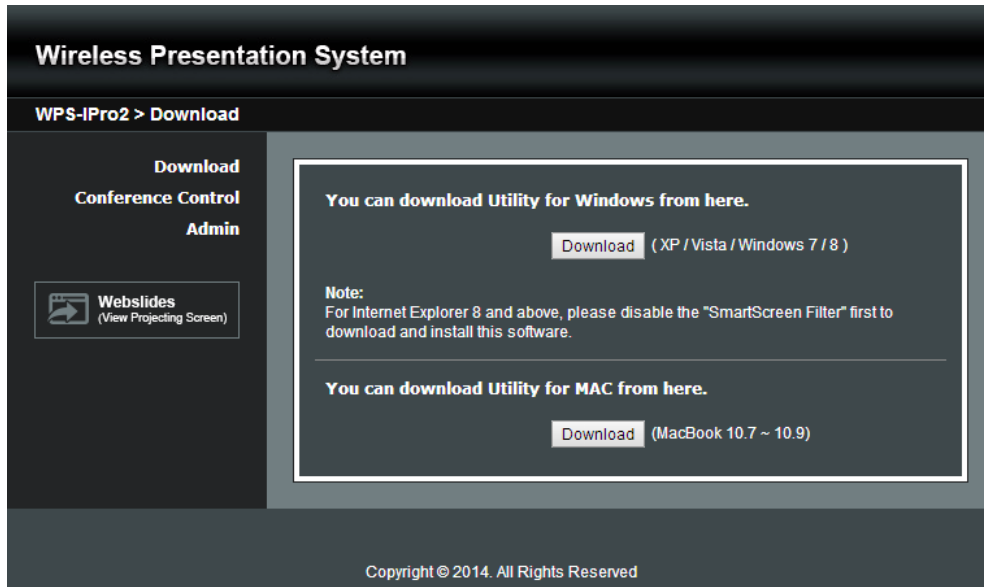
- 1) Click on “Exit” to exit this application. It will stop current playing status and shut down the application immediately.

9

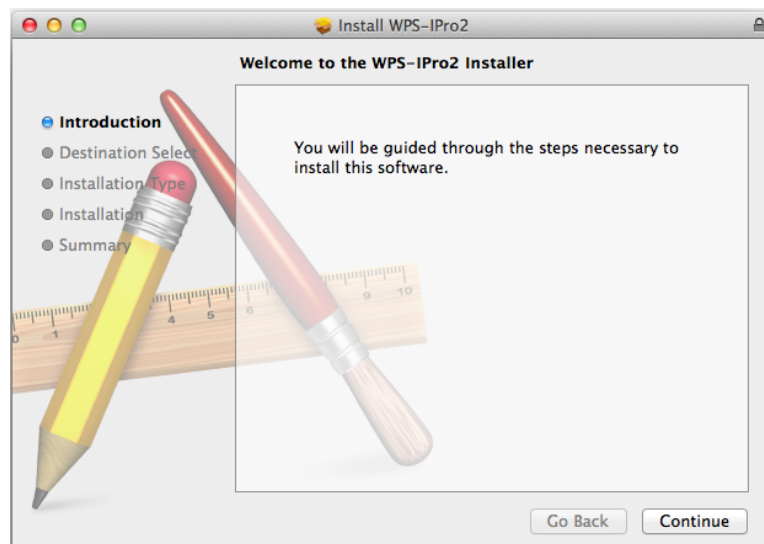
DoWiFi for Mac

9.1 Install the application

- 1) Make sure your PC WiFi is enabled and connect your PC to WPS box through WiFi.
- 2) Launch your browser and enter the IP address on browser. You can find the IP address and Host Name (SSID) on the projector/display screen. **(Default IP is 192.168.100.10)**
- 3) Download the WPS software for “Mac” and install on your MAC.



- 4) When the download is completed, follow the WPS Setup wizard to execute the software.



9.2 Start the application



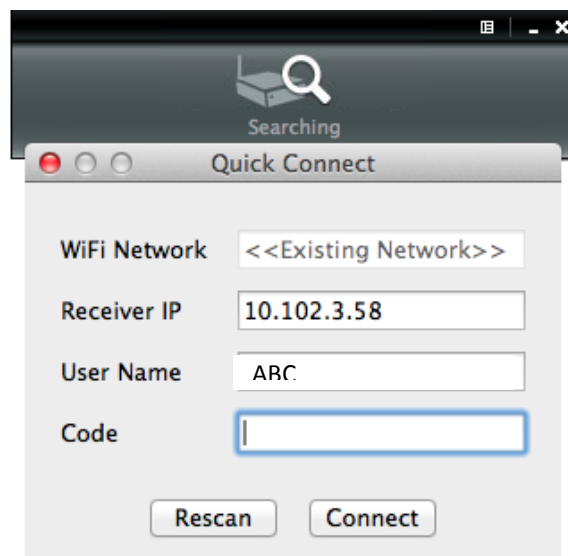
- 1) Click on WPS icon from Application folder to execute the application.

- 2) It will start to search WPS receiver automatically.



9.3 Quick Connect

- 1) WPS will memorize the last successful connection profile and open the quick connect dialog, you can enter the code (you can find the information on the standby screen) and press the "Connect" button to connect this WPS directly.



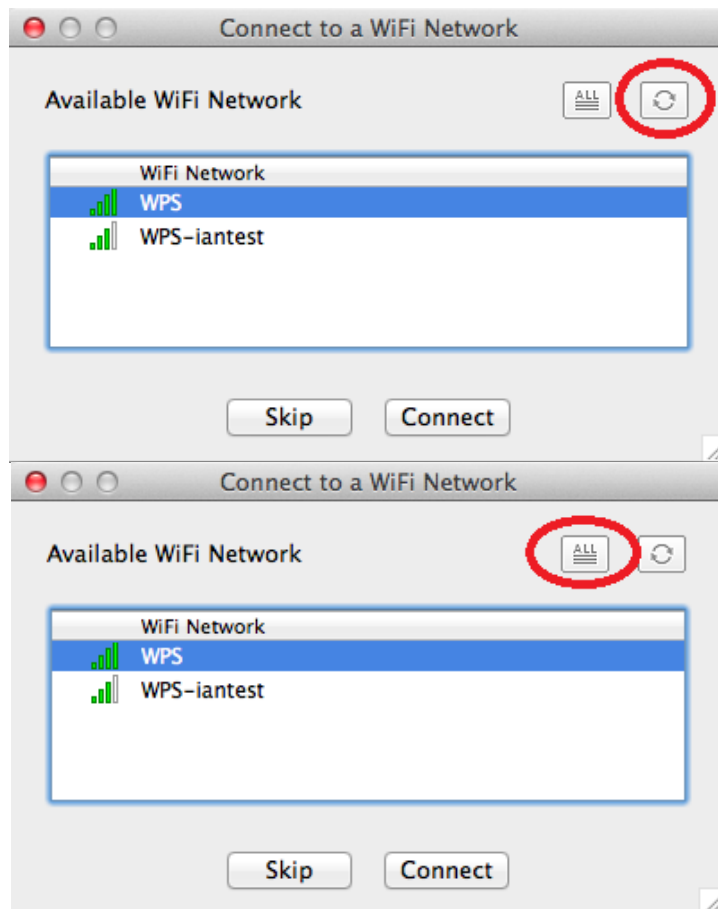
- 1) If you want to connect to another WPS receiver, please press the "Rescan" button.

9.4 Connect to WiFi Network

- 1) WPS application will search the available WiFi Network and list the WPS WiFi Device. You can select a network and press the "Connect" button to connect the selected WiFi Device.



2) You can press the "Refresh" button to search again or press the "All" button to list all available WiFi Network name.

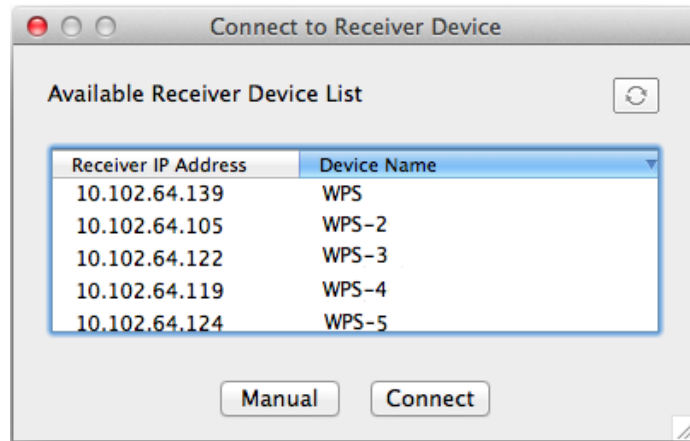


3) If you don't like to change the WiFi Network and want to keep the connection to current network, you can press the "Skip" button.

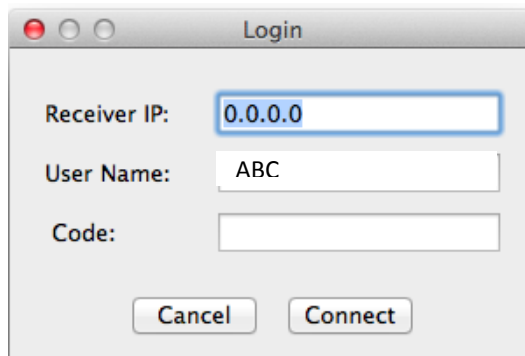


9.5 Connect to Receiver Device

- 1) WPS application will search and list the WPS receiver Device. You can select the target receiver device and press the "Connect" button to connect the selected receiver device.

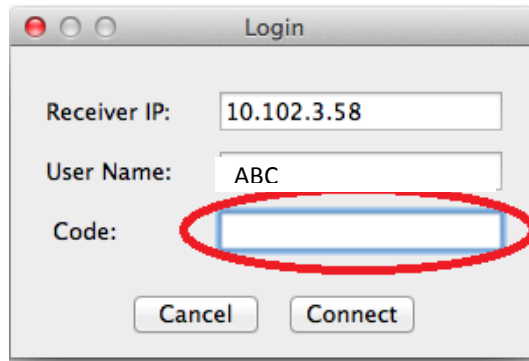


- 2) You can press the "Refresh" button to search again.
- 3) If you can't find the target receiver device from the list, you can press the "Manual" button to enter the receiver IP address manually and connect.



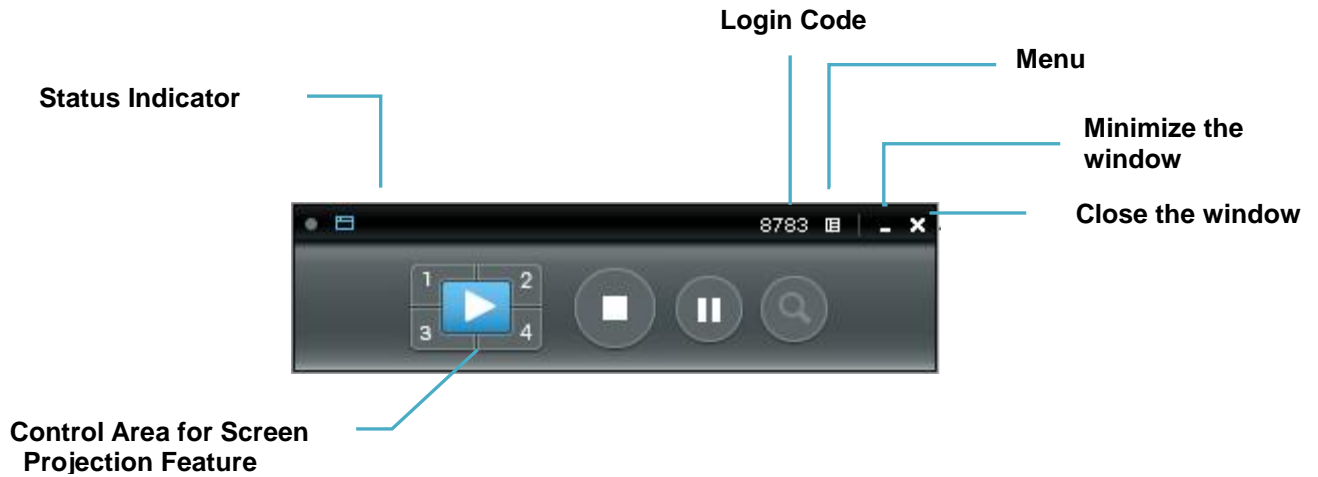
9.6 Login

- 1) When connecting to a "Code" protection enabled WPS receiver, you have to enter the "Code" and press the "Connect" button to login the receiver.
(You can find the CODE from the OSD standby screen.)



1) If you want to connect to another receiver or cancel the login, please press the “Cancel” button.






9.7 Main User Interface






9.8 Screen Projection


1) Click the “Play” button for full or “1,2,3,4” for split screen projection, you can project the main screen on to the display immediately. Click the “Pause” button, you can freeze you projection screen, and click the “Stop” button to stop projecting your screen.



Button	Description
	Full Screen projection (Support audio projection)
	Project to Split #1 (Support audio projection)
	Project to Split #2 (No audio projection)
	Project to Split #3(No audio projection)
	Project to Split #4(No audio projection)

	Stop projecting
	Pause projecting
	Enable the Magnifier function

Note:

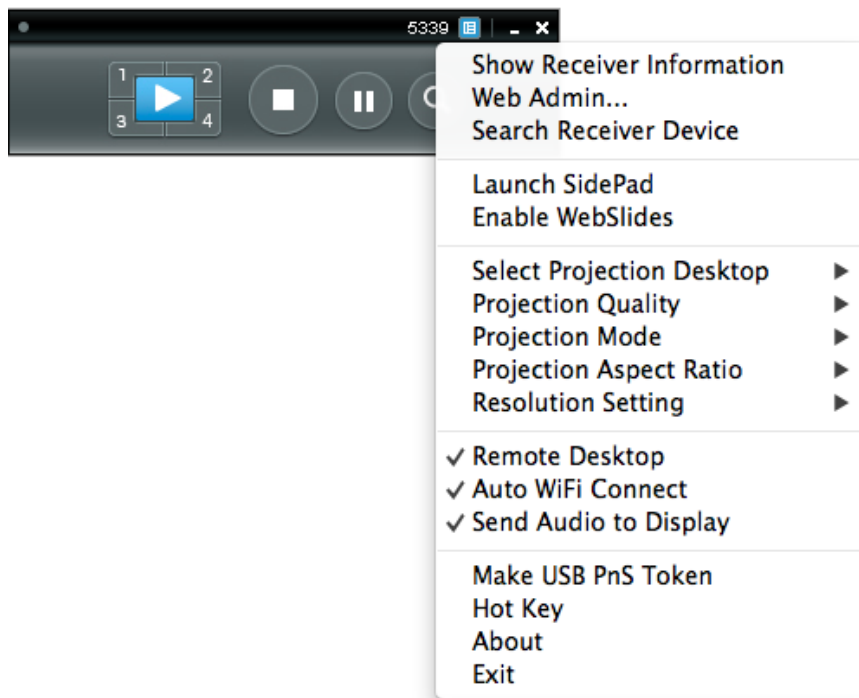
When projecting in full screen projection, if another user is clicking on the play  button, the new user's screen will replace the previous user's screen for projection.
 When projecting in Quad view mode, if another user is clicking on the selected screen button(#1, #2 , #3, #4), the new user's screen will replace the previous user's screen for projection.

9.9 Login code

Press on the login code, you can find the device IP address, SSID name and login code on the right of sidepad. The information will disappear after 30 seconds. When there are other users trying to login to the device, the information will pop up automatically for seconds and disappear again as well.

9.10 Menu

- 1) Press "Menu" button from the main UI, you will find the menu to enable the additional feature or to change the application options.



- 2) You can click on the below function for extending menu to choose one to suit your needs.

Function
Select Projection Desktop
Projection Quality
Projection Mode
Resolution Setting
Projection Aspect Ratio

3) The below items are checked as default setting. You can uncheck them to suit your needs.

Item
Send Audio to Display
Auto Power Management
Auto WiFi Connect

9.10.1 Show Receiver Information

1) Click on “Show Receiver Information”, it will display the Receiver Information, such as WiFi Name, IP Address and code on the upper corners of the projecting screen, and it will close automatically after 30 seconds.

9.10.2 Web Admin

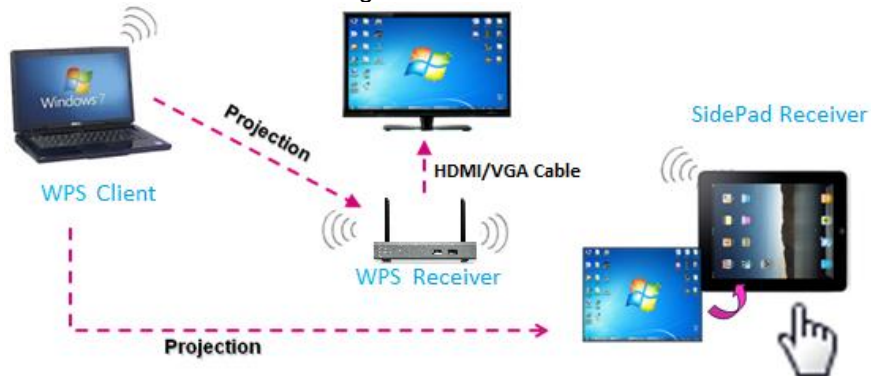
1) Click on “Web Admin”, it will open the browser and connect to the receiver web admin page automatically. (You can find more details of web admin page in Chapter 10-web Management.)

9.10.3 Search Receiver Device

1) Click on “Search Receiver Device”, it will disconnect from current receiver and search the receiver again.

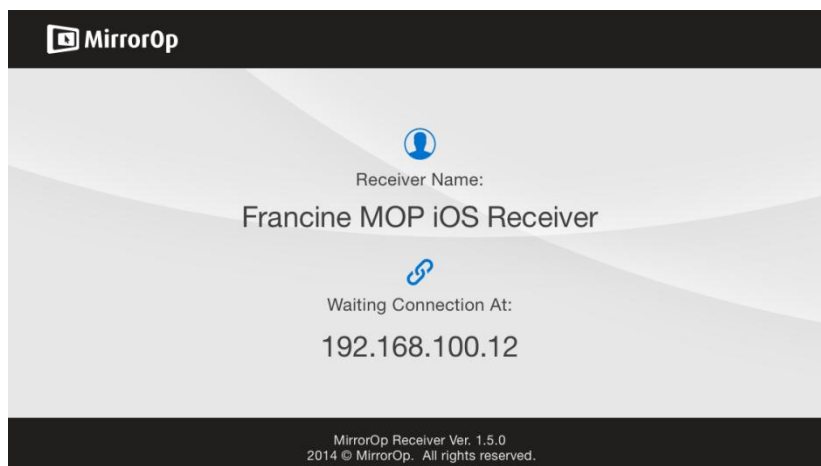
9.10.4 Launch SidePad

1) **Introduction:** MirrorOp Receiver is an application to allow the user to connect Pad/Smartphone (Android and iOS), PC, and display/projector via WPS Pro device. User can then control the projecting PC via Pad/Smartphone. Please refer to the below image for more information.



2) MirrorOp Receiver Control for Android/iOS device.

- Android: Download “MirrorOp Receiver” from Google Play Store
- iOS: Download “MirrorOp Receiver” from Apple Store.
- Connect your Android/iOS device to WPS device through WiFi and Launch “MirrorOp Receiver”



- Click on “Launch SidePad” from the menu. In seconds, you shall see the PC desktop shown on the iOS/Andriod Device. Now you can control the projecting PC from your iOS/Android device.



- 3) If there is no Smartphone/Pad device detected after clicking on “Launch SidePad” the below image will show up.

SidePad: Login

Device IP:

User Name:

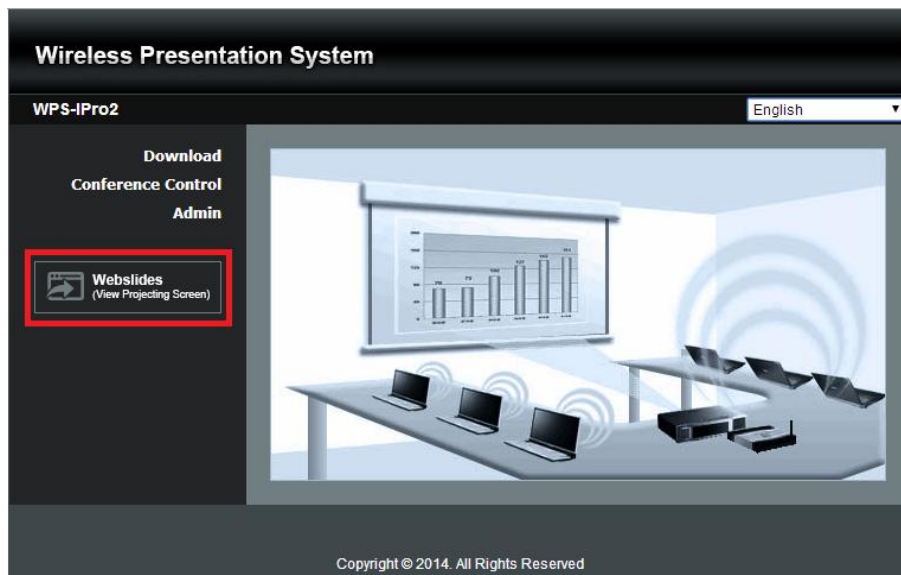
9.10.5 Launch WebSlides

Introduction: Webslides is an application to allow the user/presenter to broadcast the projecting screen/slides to allow multiple login users to receive the slides during a presentation and save the slides for note taking later.

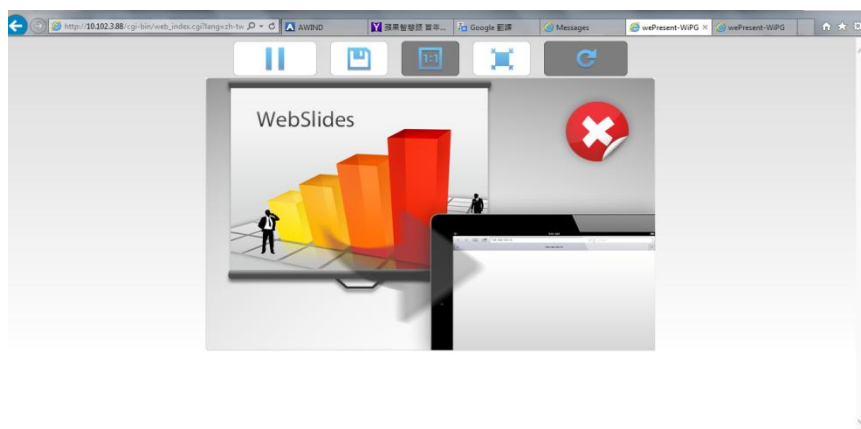
Note: Webslides is not available when Quad view is in use.



- 1) **Presenter:** Make sure your PC/Mac is connected to WPS box and click on “Launch Webslides”, when the function is on, the item will be checked on the main menu.
- 2) **Audience:** Users need to connect to WPS WiFi Network as the presenter and then launch their browser and enter WPS IP address (The information can be found on the projecting screen) on the URL of browser. Once the users are connected, they will see the below image on their devices. Click on “Webslides” button. See below:



- 3) Start to receive the presenter’s slides. The below image can be seen on the audience’s browser.



Users can put the mouse/finger on each button to get the “tip window” for the function of each button.

Note:

The WPS logged-in user is not identical to WebSlides user, and they both consume the wireless bandwidth for device connection. If there are more than 10 users logged into WPS, it is recommended to connect WPS to company network through Ethernet or bridge WPS to a router due to wireless bandwidth concern. User should connect WPS via company network or router in order to secure the projection performance. The WebSlides user number should not exceed the recommended number on the web management page to prevent the connection failure or low projection performance.

PS. Wireless Projection function and Conference Control function can support up to 64 users.

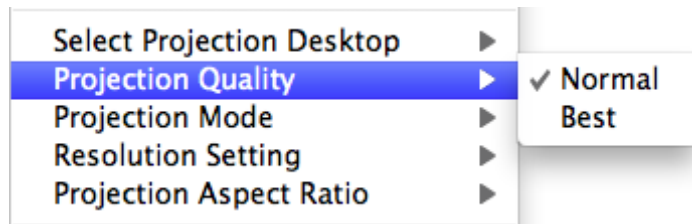
9.10.6 Select Projection Desktop

- 1) Click on the “Select Projection Desktop”, you can select to project the main screen or the extended screen.

Note: It can only support Mac 10.7 and 10.8. To use the extended screen, you have to install the SVS extended screen driver which can be found from the USB Token.

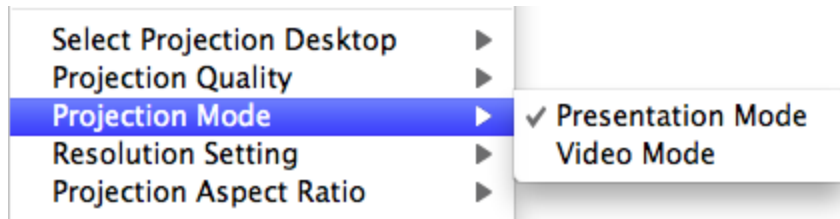
9.10.7 Projection Quality

- 1) Click on the “Projection Quality”, choose “Normal” for faster projection speed with lower screen image quality, and “Best” for clear screen image quality but slower projection speed.



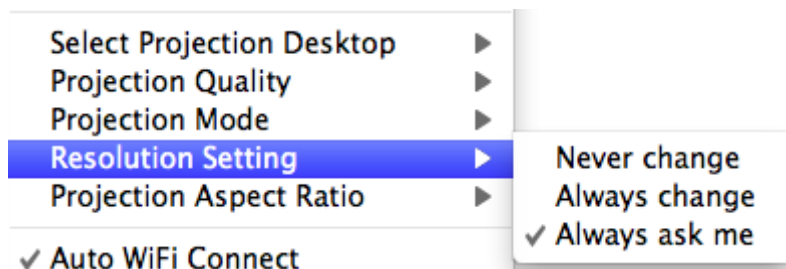
9.10.8 Select Projection Mode

- 1) Click on the “Select Projection Mode”, choose the Presentation mode for shortest latency or the Video mode for auto-latency control to have better video performance.



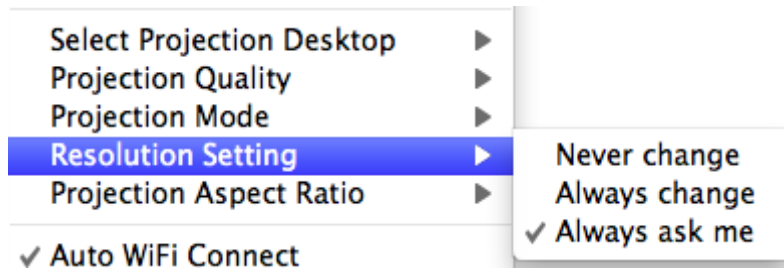
9.10.9 Resolution setting

Click on the “Resolution Setting”, choose “Never Change” to keep original desktop resolution, “Always Change” to change resolution automatically according to application’s recommendation, or “Always ask me” to prompt a resolution change message to user.



9.10.10 Projection Aspect Ratio

- 1) Click on the “Projection Aspect Ratio”, choose “Keep aspect ratio” to keep the original aspect ratio if the desktop resolution is different from WPS output resolution, or choose “Fit full screen” to project the screen to full screen.



9.10.11 Send Audio to Display

- 1) Click on “Send Audio to Display” to start the audio projection feature. It will mute your local speaker during the projection and restore it when it closes the application.

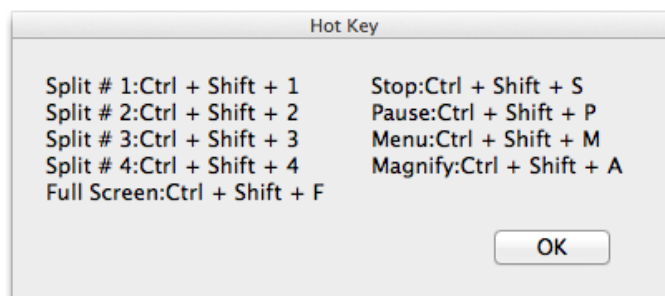
Note: You have to install the SoundFlower Audio driver. You can find the driver from USB token.

9.10.12 Auto WiFi Connect

- 1) Click on “Auto WiFi Connect” to enable the WiFi connection automatically.

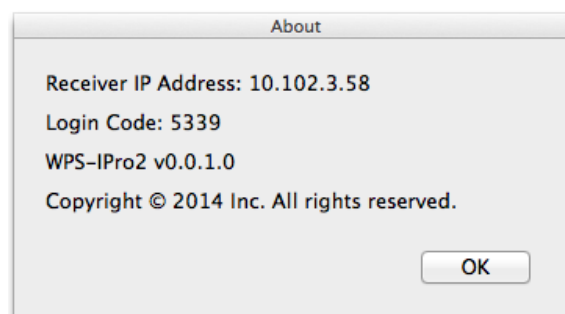
9.10.13 Hot Key

- 1) Click on “Hot Key” to display the available Hot Key definition.



9.10.14 About

- 1) Click on “About” to show system information. It includes product model name, Application version, IP address and other information.



9.10.15 Exit

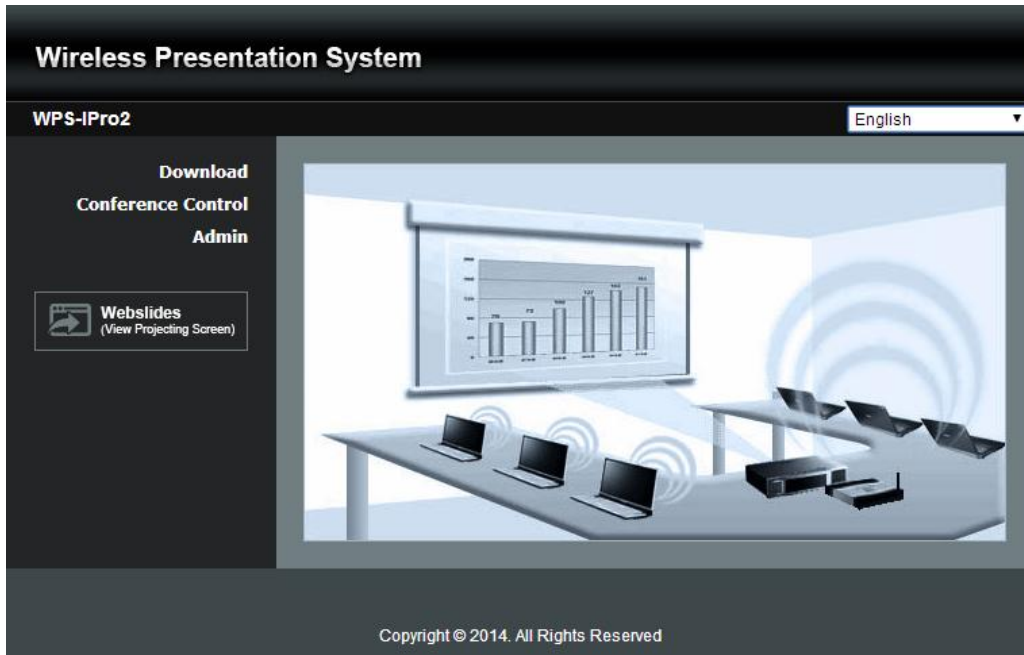
- 1) Click on “Exit” to exit this application. It will stop current playing status and shut down the application immediate.

10

Web Management

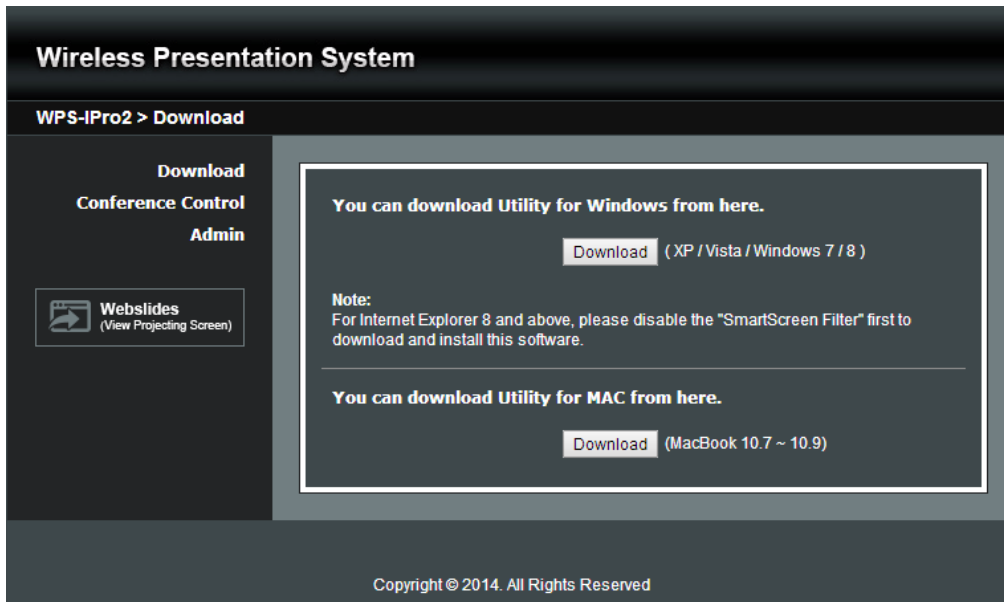
10.1 Home Page

- 1) Make sure your PC connect to WPS Pro box successfully.
- 2) Enter the receiver IP address on your browser; you can find the IP address on the projector/display screen. (Default IP is 192.168.100.10).
- 3) Your browser will lead you to the below page.



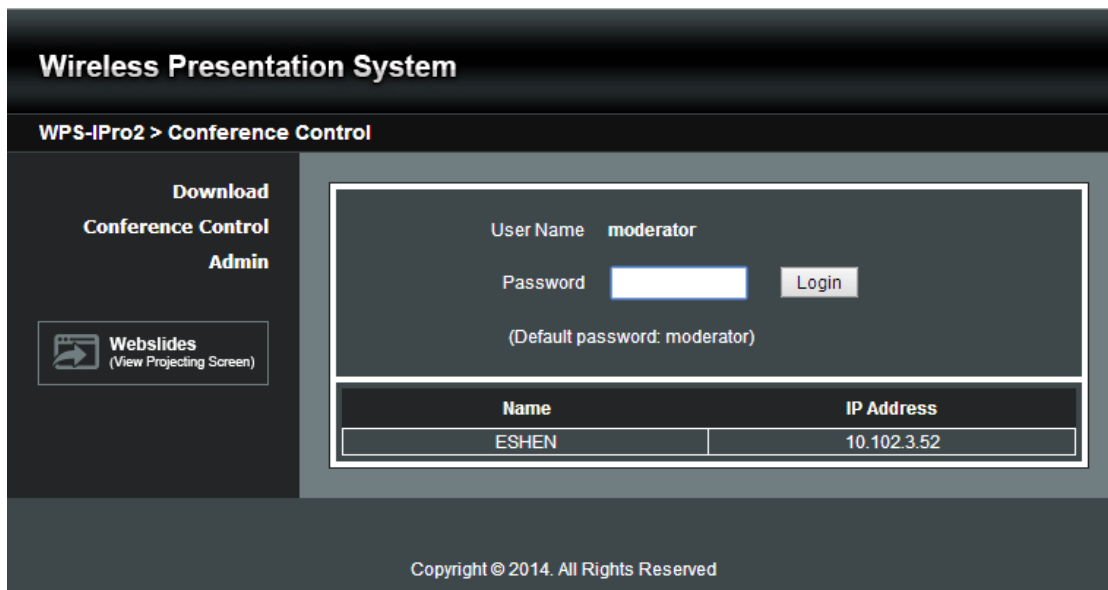
10.2 Download

- 1) Select "Download" function.
- 2) Please select the "Win 8/ Win 7 / Windows Vista / XP" or "Mac Utility" and execute the installation program.
Note: Please disable the "Smart Screen Filter" on IE browser; otherwise you might not able to download the file.

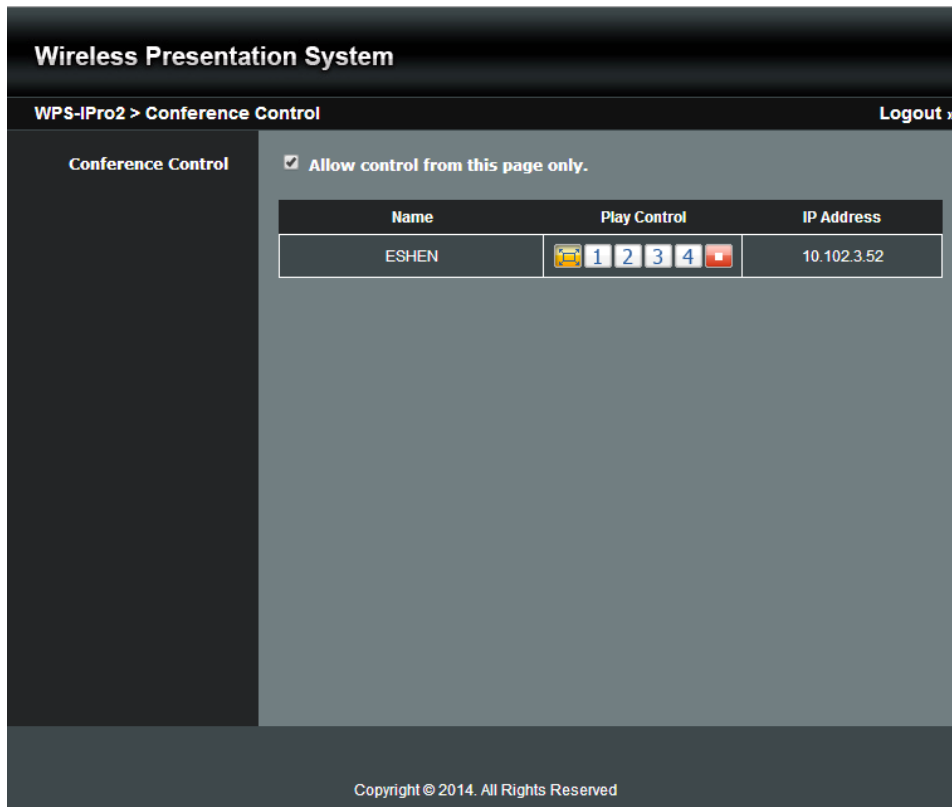



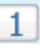




10.3 Conference Control

- 1) Select "Conference Control" function, you can find the current connected user list on this page.
- 2) Enter password and then press [Login]. (default password: moderator)



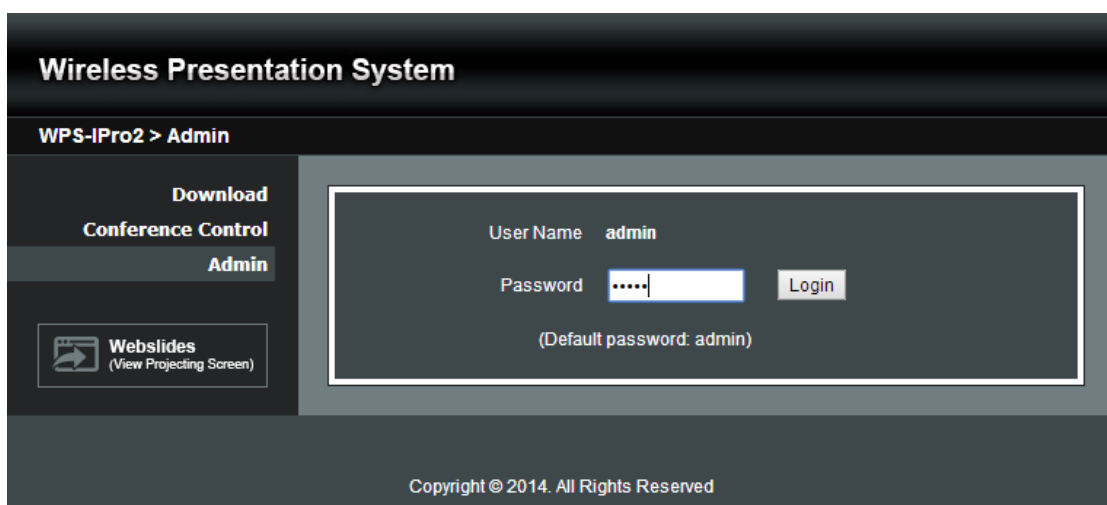
- 3) After login, you can see a User List on the screen which indicates all of users connected to WPS box.
- 4) The default setting is "allow control from this page only". When this function is checked, the moderator can control all the login users' projection.



- 5) There are three columns, “User Name”, “Play Control” and “IP Address”.
 - a. Play Control: There are six buttons, including Play(Full) , Screen #1 , Screen#2 , Screen #3 , Screen#4  and Stop .
 - b. Moderator can click on the “play” button to allow the projecting.
 - c. Moderator can assign which user to project on which screen by clicking on the screen numbers.
 - d. Moderator can “stop” the projecting anytime.
- 6) Uncheck the “Allow Control from this page only”, it will disable the centralized control and user can project the screen to WPS freely.
- 7) Moderator can log out from the conference control mode by clicking on the” log out” on the upper right corner.

10.4Admin

- 1) Click on “Admin” and then enter the password to login web admin page. **(Default Password: admin)**



10.4.1 System Status

1) Click on “System Status” option, it will show current system status.

Model Name: Product model name

Versions:

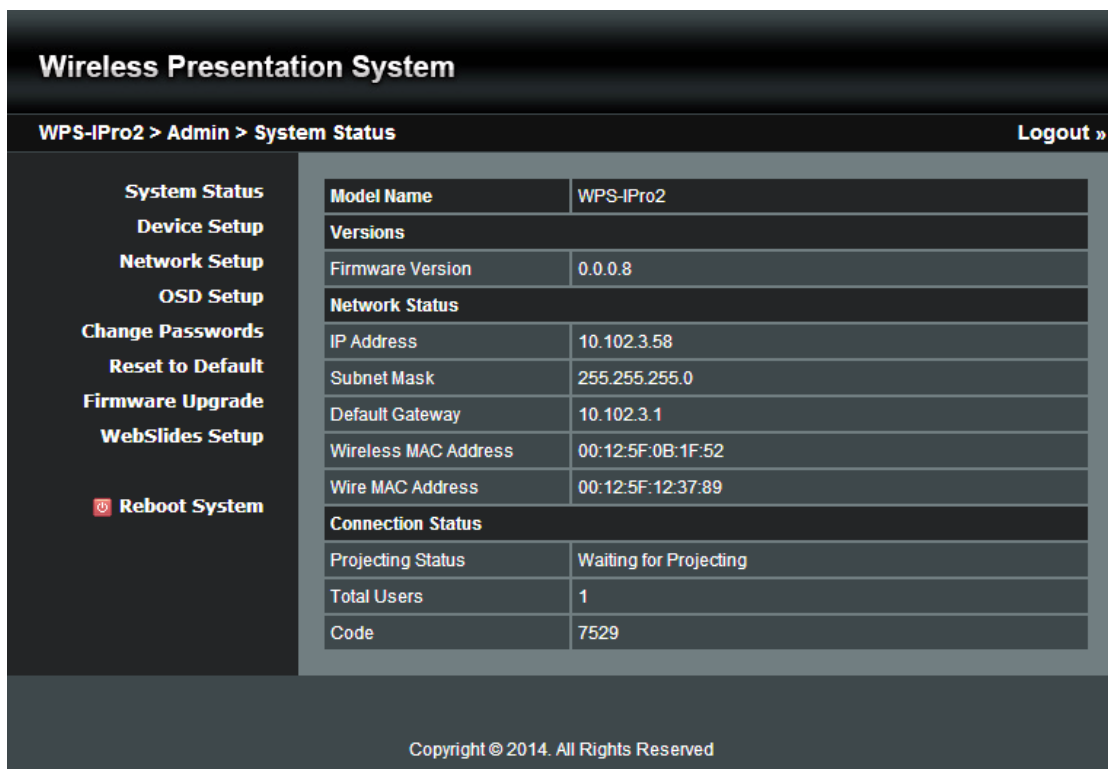
- **Firmware version no.:** Product firmware version number.

Network Status:

- **IP address :** IP address of WPS device.
- **Subnet Mask :** subnet mask
- **Default Gateway :** default gateway
- **Wireless MAC address :** wireless MAC address
- **Wire MAC address :** wire MAC address

Connection Status:

- **Projecting status:** “Waiting for projecting” or “Projecting”
- **Total Users:** It shows how many users login to WPS.
- **Code:** It will show current Code



10.4.2 Device Setup

1) Click on “Device Setup” option, it will show the device setting items,

- ◆ Choose **<VGA>** or **<HDMI>** output option
- ◆ **<Resolution>**:
VGA: UXGA(1600*1500), WXGA+(1440*900), WXGA(1360*768, 1280x768, 1280x800), XGA(1024*768), and SVGA(800*600). The default value is XGA(1024*768).
HDMI: 720p, 1080i, 1080p
- ◆ **<Code>**: You can select “Disable”, “Random”, or “Use the following code” to set a specified 4-characters Number.
- ◆ **<IWB USB Port>**: You can configure the IWB USB port to support “IWB (HID)” device or “Mouse/Keyboard” device.
- ◆ After choose all the favorable configuration, click on **<Apply>** to confirm and save the modifications or **<Cancel>** to cancel all the modifications.



10.4.3 Network Setup

1) Click on “Network Setup” option, it will show the network setting items,

< IP Setup >

- ◆ You can select “obtain IP address automatically” or “Use the following IP address” to enter the IP address.

The default setting is as following:

- ◆ IP Address: 192.168.100.10.
- ◆ Subnet Mask: 255.255.255.0
- ◆ Default Gateway: 192.168.100.10
- ◆ DNS Server: 192.168.100.10

<DHCP Server Setup>

<Note: Auto-Configuration Network Setup on WPS>

- ◆ The default setting of the WPS box as DHCP server. When the WPS box is connected to a LAN that already has a DHCP server, the WPS box uses an IP address assigned by the server. When the WPS box is connected to a LAN that does not have a DHCP server, the WPS box becomes the DHCP server in the network.
- ◆ You can select “auto” option. WPS will auto disable the DHCP server setup when the existing DHCP server is detected. Or you can simply select “Disable” option. When you choose “Auto” option, you can enter the below information or keep it as default setting.

Start IP: 192.168.100.11

End IP: 192.168.100.254

Subnet Mask: 255.255.255.0

Default Gateway: 192.168.100.10

DNS Server: 192.168.100.10

< Wireless Setup >

- ◆ Wireless LAN: The default setting is “Enable”
- ◆ SSID: You can change the default SSID and the maximum Length is 32 bytes.
- ◆ SSID Broadcast: The default value is “Enable”
- ◆ Channel: You can set a fixed channel or allow auto selection. The “Auto” selection means after power on WPS, it will scan all of wireless channels and select one clear channel automatically.
- ◆ Encryption: you can select “Disable” or one of WEP/WPA PSK/WPA2 PSK.
- ◆ Key: If Encryption is enabled, you have to enter a key according to the encryption mode you selected. (If the length of the key entered is not sufficient or too long, a warning message will pop up.)
- ◆ Channel Bandwidth: select from 20M or Auto (20M/40M)

< AP Client>

- ◆ Connect to Existing AP: The default setting is "Disable". If you choose "Enable" you need to enter the existing AP SSID that you want to connect. When you select "Enable" option, the following information needs to be entered accordingly to the existing AP setting:
Encryption: Select "Disable" or one of WEP/WPA PSK/WPA2 PSK.
Key: If Encryption is enabled, you have to enter a key according to the encryption mode you selected. (If the length of the key entered is not sufficient or too long, a warning message will pop up.)
Note: The Encryption and Key information must be consistent to the exiting AP configuration.

< Gatekeeper>

Gatekeeper is designed for ensuring the enterprise network security within WPS box

- ◆ "All Block" can block Guest Users(through wireless) to access all office network(LAN),
- ◆ "All Pass" can allow Guest Users(through wireless) to access all office network
- ◆ "Internet Only" can block Guest Users (through wireless) from office network (LAN) but still reserve internet connection capability.

<SNMP>

You can select "Enable" or "Disable" option to set up the SNMP function. And the SNMP community password is the same as the web Admin password.

<Apply >: Press "Apply" button after configuration, and follow the reboot instruction when applicable.

<Cancel>: Press button to abort action.



10.4.4 OSD Setup

1) Click on “OSD Setup” option, you can:

Change Standby Image

- ◆ **Change Standby Image:** Replace the whole standby image
- ◆ **<Reset to default>:** Restore to default Logo image.
- ◆ **<Image File Upload>:** Enter or browse the file name and upload the customized Logo Image. Please refer to remark on screen when select the file.

You can also adjust the following “Display Option”

- ◆ **Device Information:** Show all or Hide all the device information on standby screen.
(**Note:**When Device Information set Hide option, the "Overlay Device Information" & "Screen Saver Setting" will be disabled)
- ◆ **Overlay Device Information:** Enable or disable the device information will be show on top of projection screen when doing projection.
- ◆ **Screen Saver Settings:** Enable or disable the screen saver and also configure the idle time(Minutes).
(default is 5 mins)

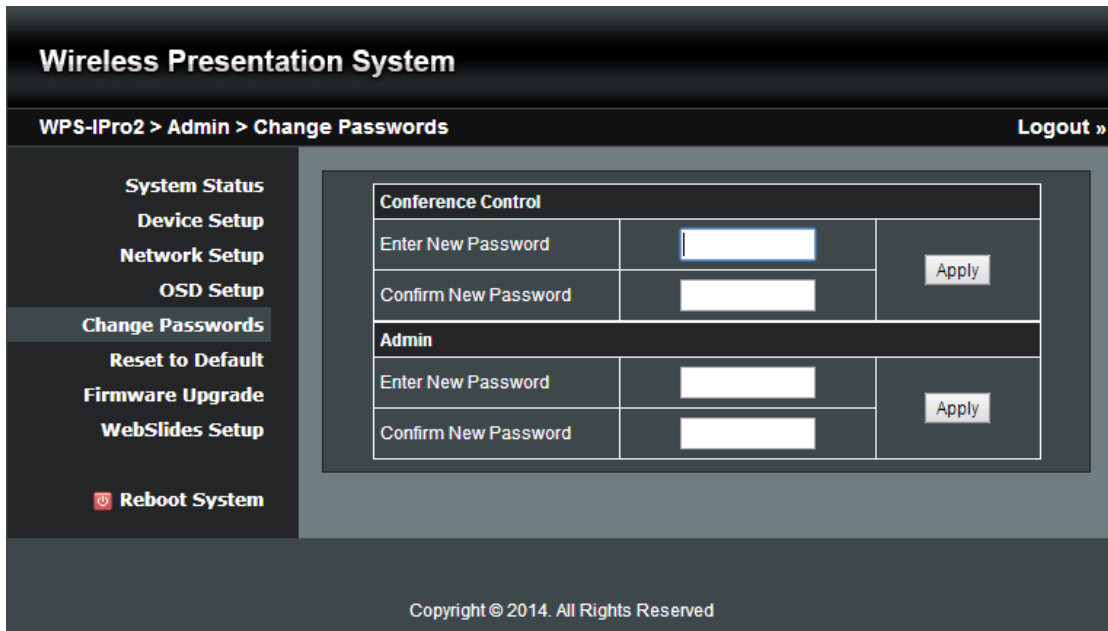
<Apply >: Press "Apply" button after configuration, and follow the reboot instruction when applicable.

<Cancel>: Press button to abort action.

10.4.5 Change Passwords

1) Click on "Change Password" option, you can change the password setting for "conference control" and "Admin".
(Length: up to 8 characters)

- ◆ **<Enter New Password>**
- ◆ **<Confirm New Password>**
- ◆ **<Apply>:** Confirm and Save modifications.



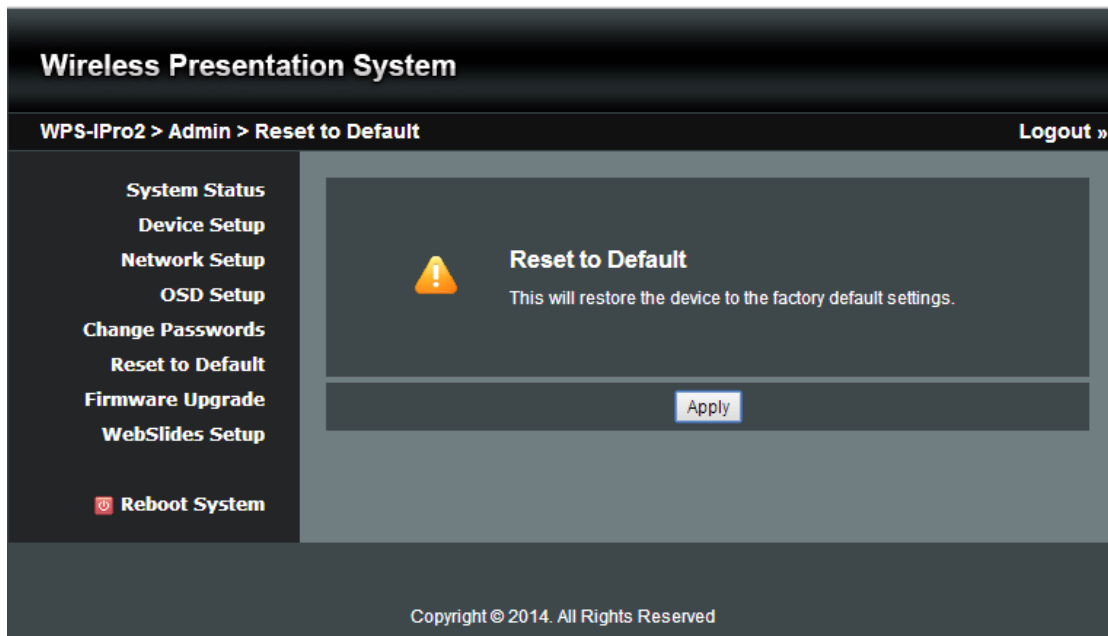
10.4.6 Reset to Default

1) Click on “Reset to Default” option to restore factory default settings.

<Apply>: Confirm and take action.

*** You can also restore factory default setting from WPS box reset button. You can find the reset button underneath the box. Please follow below procedures.

1. Press [Reset] button and Hold.
2. Turn on WPS box.
3. Press more than 10 seconds and relief [Reset] button.
4. It will take effect to restore factory default settings.



10.4.7 Firmware Upgrade

1) Click on” Firmware Upgrade” option to “import/export” system configuration and upgrade firmware.

2) System Configuration Import and Export

Export: Export the system configuration to a configuration file

Import: Import the system configuration file to WPS

3) You can find the firmware version and release date here.

- 4) Firmware Upgrade
 - A. Firstly, you have to get latest firmware image file from your vendor.
 - B. Click **<Browse>** to specify file name you want to upgrade.
 - C. Click **<Upgrade>** to start.
 - D. A warning message shown and countdown counter on the screen.
 - E. After a few minutes, a complete message shown on the screen.
 - F. Restart WPS box to take effect.

Copyright © 2014. All Rights Reserved



Please wait while System burns new firmware into your device.

Warning: It needs to take 1~3 minutes to burn the file you transferred into flash memory. During this period, any interrupt such as shut down or reboot the system will cause system crash!!

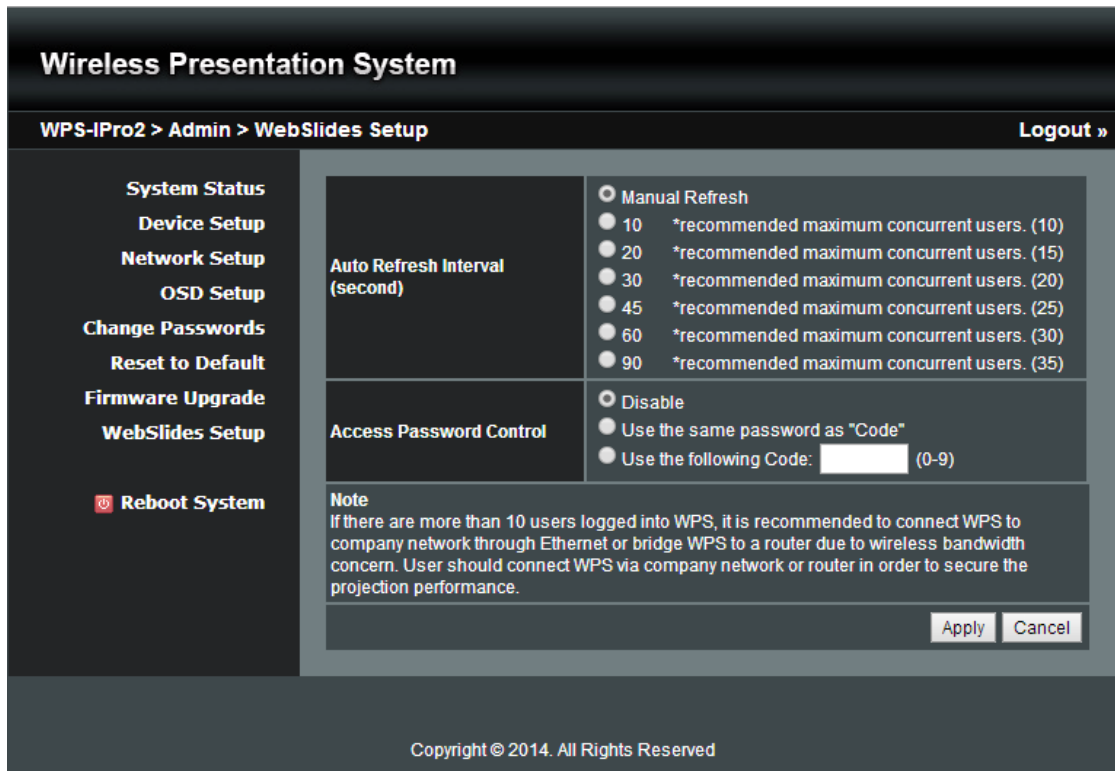
Update Progress : 15%



Warning: Don't power off WPS while firmware upgrade in progress, otherwise you will damage your box and have to return device to your vendor for fixing.

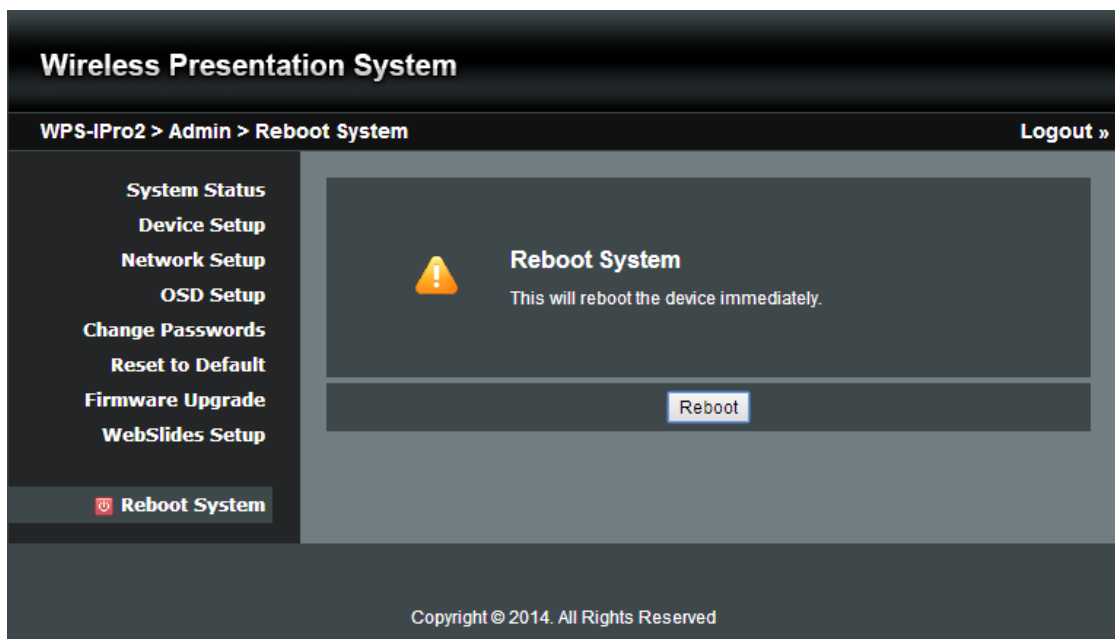
10.4.8 WebSlides Setup

- 1) Click on "WebSlides Setup" option, you can:
 - Adjust Auto Refresh Interval, or activate "Access Password Control"**
 - Please pay attention on the note for information.**
 - <Apply >:** Press "Apply" button after configuration, and follow the reboot instruction when applicable.
 - <Cancel>:** Press button to abort action.



10.4.9 Reboot System

- 1) Click on “Reboot System” option, you can restart the system
 - ◆ Click on <Reboot >button: reboot system automatically.



10.4.10 Logout

- 1) Click on “logout” on the up right corner, you can logout the administration webpage and return back to the web management front page.

Wireless Presentation System

WPS-IPro2 > Admin > System Status Logout »

- System Status
- Device Setup
- Network Setup
- OSD Setup
- Change Passwords
- Reset to Default
- Firmware Upgrade
- WebSlides Setup
- Ⓜ Reboot System

Model Name	WPS-IPro2
Versions	
Firmware Version	0.0.0.8
Network Status	
IP Address	10.102.3.58
Subnet Mask	255.255.255.0
Default Gateway	10.102.3.1
Wireless MAC Address	00:12:5F:0B:1F:52
Wire MAC Address	00:12:5F:12:37:89
Connection Status	
Projecting Status	Waiting for Projecting
Total Users	1
Code	7529


Copyright © 2014. All Rights Reserved

10.5 WebSlides

- 1) Press the “WebSlides” button to enter the WebSlides page.
- 2) Please refer to 8.10.5 Launch Webslides for more information.

Wireless Presentation System

WPS-IPro2 English ▾

- Download
- Conference Control
- Admin
- 
WebSlides
 (View Projecting Screen)



Copyright © 2014. All Rights Reserved

11

Appendices

Copyright

© Copyright 2015. This publication, including all photographs, illustrations and software, is protected under international copyright laws, with all rights reserved. Neither this manual, nor any of the material contained herein, may be reproduced without written consent of the author.

Disclaimer

The information in this document is subject to change without notice. The manufacturer makes no representations or warranties with respect to the contents hereof and specifically disclaims any implied warranties of merchantability or fitness for any particular purpose. The manufacturer reserves the right to revise this publication and to make changes from time to time in the content hereof without obligation of the manufacturer to notify any person of such revision or changes.

Trademarks

Optoma and its logo is a registered trademark of Optoma Corporation. Optoma Europe Ltd is the licensee of the registered trademark. Android is a registered trademark of Google Inc. Windows is a registered trademark of Microsoft Corporation in the United States and/or other countries. OS X is registered trademarks of Apple Inc. iOS is a trademark or registered trademark of Cisco in the U.S. and other countries and is used under license. HDMI, the HDMI Logo, and High-Definition Multimedia Interface are trademarks or registered trademarks of HDMI Licensing LLC in the United States and other countries.

FCC

This device has been tested and found to comply with the limits for a Class B digital device pursuant to Part 15 of the FCC rules. These limits are designed to provide reasonable protection against harmful interference in a residential installation. This device generates, uses and can radiate radio frequency energy and, if not installed and used in accordance with the instructions, may cause harmful interference to radio communications.

However, there is no guarantee that interference will not occur in a particular installation. If this device does cause harmful interference to radio or television reception, which can be determined by turning the device off and on is encouraged to try to correct the interference by one or more of the following measures:

- Reorient or relocate the receiving antenna...
- Increase the separation between the device and receiver...
- Connect the device into an outlet on a circuit different from that to which the receiver is connected...
- Consult the dealer or an experienced radio/television technician for help...

Notice: Shielded cables

All connections to other computing devices must be made using shielded cables to maintain compliance with FCC regulations.

Caution

Changes or modifications not expressly approved by the manufacturer could void the user's authority, which is granted by the Federal Communications Commission, to operate this equipment.

Operation Conditions

This device complies with Part 15 of the FCC Rules. Operation is subject to the following two conditions:

1. This device may not cause harmful interference and
2. This device must accept any interference received, including interference that may cause undesired operation.

Notice: Canadian users

This Class B digital apparatus complies with Canadian ICES-003.

Remarque l'intention des utilisateurs canadiens

Cet appareil numérique de la classe B est conforme à la norme NMB-003 du Canada.

Declaration of conformity

- EMC Directive 2004/108/EC
- Low Voltage Directive 2006/95/EC.
- R & TTE Directive 1999/5/EC

11.1 Optoma Global Offices

For service or support please contact your local office

USA

3178 Laurelview Ct.,
Fremont, CA 94538, USA
www.optomausa.com

Tel : 888-289-6786
Fax : 510-897-8601
Service : services@optoma.com

Canada

3178 Laurelview Ct.,
Fremont, CA 94538, USA
www.optoma.ca

Tel : 888-289-6786
Fax : 510-897-8601
Service : services@optoma.com

Latin America

3178 Laurelview Ct.
Fremont, CA 94538, USA
www.optoma.com.br

Tel : 888-289-6786
Fax: 510-897-8601
www.optoma.com.mx

Europe

42 Caxton Way, The Watford Business Park
Watford, Hertfordshire,
WD18 8QZ, UK
www.optom_a.eu
Service Tel : +44 (0)1923 691865

Tel : +44 (0) 1923 691 800
Fax : +44 (0) 1923 691 888
Service : service@tsc-europe.com

Benelux BV

Randstad 22-123
1316 BW Almere
The Netherlands
www.optoma.nl

Tel : +31 (0) 36 820 0252
Fax : +31 (0) 36 548 9052

France

Bâtiment E
81-83 avenue Edouard Vaillant
92100 Boulogne Billancourt, France

Tel : +33 1 41 46 12 20
Fax : +33 1 41 46 94 35
Service : savoptoma@optoma.fr

Spain

C/ José Hierro,36 Of. 1C
28522 Rivas VaciaMadrid, Spain

Tel : +34 91 499 06 06
Fax : +34 91 670 08 32

Deutschland

Wiesenstrasse 21 W
D40549 Düsseldorf,
Germany info@optoma.de

Tel:+49 (0) 211 506 6670
Fax:+49 (0) 211 506 66799

Scandinavia

Lerpeveien 25
3040 Drammen
Norway
PO.BOX 9515
3038 DrammenNorway

Tel : +47 32 98 89 90
FAX : +47 32 98 89 99
Service : info@optoma.no

Taiwan

12F., No.213, Sec. 3, Beixin Rd.,
Xindian Dist., New Taipei City 231,
Taiwan, R.O.C.
www.optoma.com.tw

Tel:+886-2-8911-8600
Fax: +886-2-8911-6550
Service :services@optoma.com.tw
asia.optoma.com

Hong Kong

Unit A, 27/F Dragon Centre,
79 Wing Hong Street,
Cheung Sha Wan Kowloon, Hong Kong

Tel : +852-2396-8968
Fax: +852-2370-1222
www.optoma.com.hk

