

ES-120

48" Carbon Fiber Slider (E-Image)

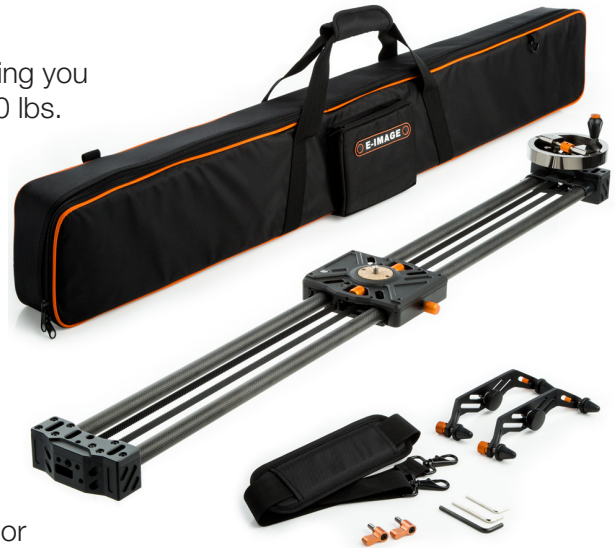
ONE SHEET

Overview

The E-Image ES-120 Carbon Fiber Slider has all the features you could ask for in a lightweight, portable, camera slider.

This compact 48" slider provides multiple modes of operation; allowing you to get smooth, short-run, dolly shots with camera weighting up to 50 lbs. It's unique flywheel and belt-driven system allows operators to dial in their preferred resistance based on the weight of their camera. Operate the slider by way of the flywheel's crank handle or remove the flywheel altogether for feather touch control. Automated, or powered, control can be achieved by attaching the optional Magic Motor to the ES-120 (sold separately).

A standard tripod head may be mounted to the 5" x 5" plate by way of a central $\frac{3}{8}$ "-16 threaded stud. The slider may be mounted to tripods or light stand by utilizing its many $\frac{1}{4}$ "-20 and $\frac{3}{8}$ "-16 mounting points at the end or central plate. There are also $\frac{5}{8}$ " stand mount receivers at both ends of the slider for mounting to C-stands or baby-stands. If no stand or tripod is required for your shot, four individual outrigger feet help you to level the slider.



ES-120 | 48" Carbon Fiber Slider (E-Image) | UPC Code: 847983014194

Special Features

- Hand, motor, or crank operation (motor sold separately)
- Adjustable flywheel to dial in preferred resistance
- Sturdy, lightweight, 10-layer carbon fiber frame
- 12 extremely smooth sealed-bearing wheel guides
- Multiple mounting options plus integrated $\frac{5}{8}$ " stand receivers
- Rigid 44.5" slider rails and a large central cheese-plate mount
- Large 5" x 5" camera platform supports a weight capacity of 50 lbs.

Recommended For

- Location/Studio Cinematography
- Time lapse Shooting
- Cinematic Dolly Moves

ikan

www.ikancorp.com

1.713.272.8822

sales@ikancorp.com



www.facebook.com/ikanseeit



www.twitter.com/ikancorp



www.vimeo.com/ikancorp



www.youtube.com/ikancorp

ES-120

Features you need, Prices you want.

Fly Wheel Belt Drive System

The flywheel belt-drive system offers the smoothest platform for camera movement, allowing multiple operator adjustments for drag, speed, ramp, and crank operation. Simply dial in the preferred weight to your preference.

12 Sealed-Bearing Wheel Design

The rollers can be adjusted for heavier rigs in order to minimize lateral movement along the rails. Twelve sealed bearings help smoothly distribute weight, and keep slider movement tolerances at a minimum.

Integrated 5/8" Stand Receiver

The integrated 5/8" stand receivers offer the most secure way to attach the slider to a c-stand or baby-stand; ensuring stable support during transitions.

Adjustable Outrigger Feet

The adjustable outrigger feet make leveling or operating on uneven ground surfaces easy.

Easy to Transport

Comes complete with a padded case and detachable shoulder strap.

What's Included

- 2 x Adjustable Slider Leg Assemblies
- 1 x 27" Carbon Fiber Slider
- 1 x Carry Case
- 1 x Shoulder Strap
- 1 x Weighted Flywheel And Crank

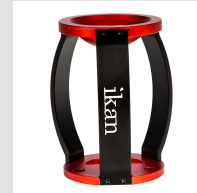
Specifications

Bubble Level	On Camera Platform
Camera Plate Size	5 x 6 In.
Material	Aluminum & Carbon Fiber
Weight	5 lbs
Shipping Dimensions	49.5 x 8.25 x 5.75 In.
Shipping Weight	13 lbs

Optional Accessories



IK-RSR3
3" Camera Riser



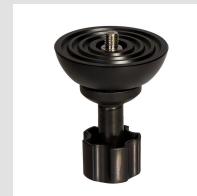
IK-RSR6
6" Hi-Hat Riser



IK-RSRS
6" Camera Riser
Hi-Hat with Swivel



100BF
100mm Ball to
Flat Adapter



75BF
75mm Ball to
Flat Adapter



GH03F
Flat Base Pro Fluid
Head 11 lbs Max

