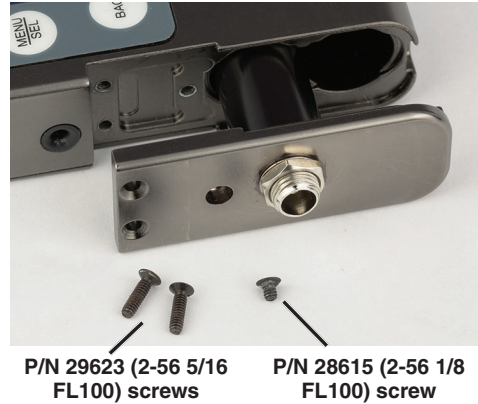


Battery Eliminator

This battery eliminator replaces the batteries and door on the LR receiver, allowing the unit to be powered from an external DC source. The battery eliminator is supplied in a kit including mounting screws.



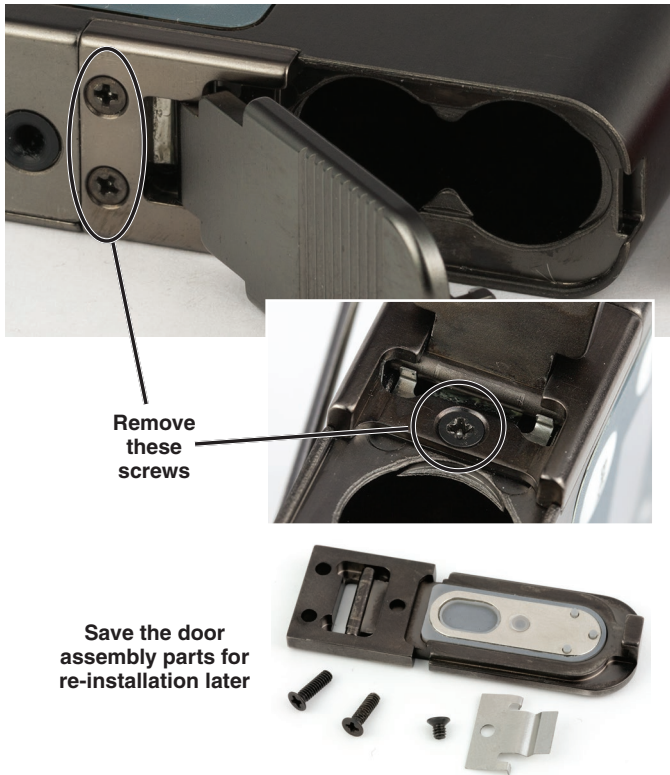
Insert the battery eliminator as shown below and fasten it with the supplied screws.



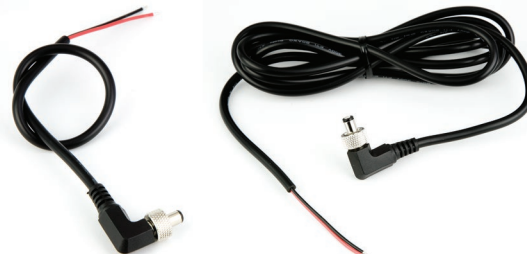
CAUTION: Use only the shorter screw P/N 28615 (2-56 1/8 in.) in the hole near the connector. The longer screws may damage a circuit board component.

Tighten all three screws snugly, but be careful not to overtighten them and damage the threads.

Removing the Battery Door



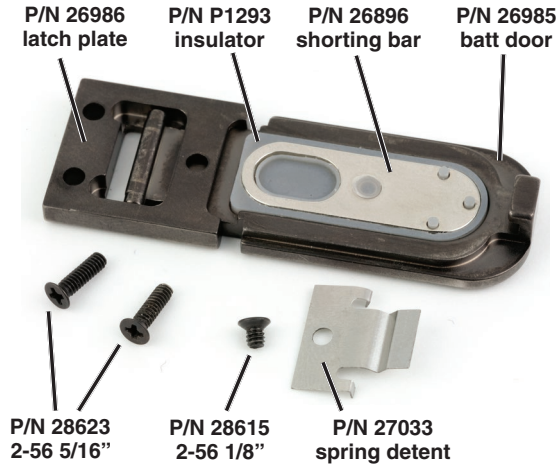
Optional power cables from Lectrosonics include:
P/N 21746 right angle, locking cable; 12 in. length
P/N 21747 right angle, locking cable; 6 ft. length



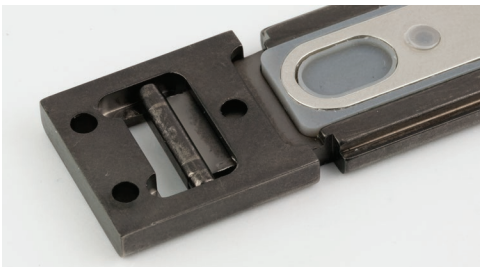
Replacing the Battery Door

Separate part numbers for the battery door assembly are as follows.

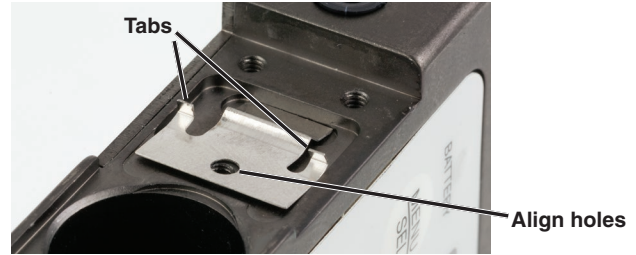
NOTE: The insulator, shorting bar and batt door are factory assembled with an adhesive.



Assemble the battery door and latch plate.



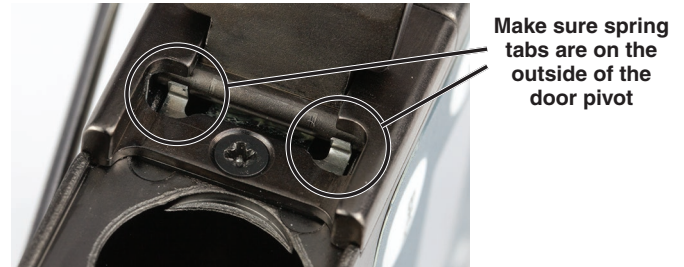
Place the spring detent clip on the housing with the tabs facing upward and the screw hole aligned with the one in the housing.



Mount the latch plate and door assembly on top of the spring detent and align the screw hole. Insert the shortest screw (P/N 28615 2-56 1/8") into the hole and tighten.

CAUTION: Use only the 1/8" screw. The longer ones may damage the circuit board inside.

As you tighten the screw, the latch plate and door pivot will align the spring detent. Tighten the screw snugly, but not so tight it damages the threads.



Close the door and make sure it latches correctly. If so, then insert and tighten the two screws on the outside of the housing. Use the longest screws (P/N 28623 2-56 5/16").



Specifications

Input voltage range:	5 to 25 VDC
Dimensions:	53 x 60 x 21 mm (2.09 x 2.38 x .84 inches)
Weight:	23 grams (0.81 ozs.)

