

# U-Series

## Fixed Width Speaker Mount

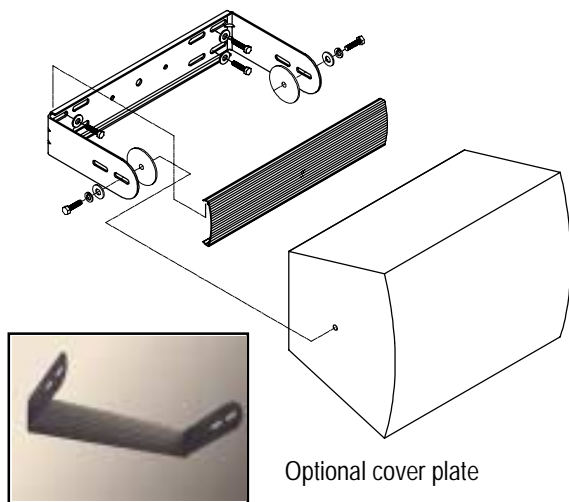
## For One Axis of Rotation



Ceiling Mounted



Wall Mounted



Optional cover plate

These speaker mounts install and aim loudspeakers from walls, ceilings, under balconies, overhangs and other structural surfaces. Loudspeakers rotate on one axis to acquire the tilt angle desired and then locking it into position.

Flexible features allow the mount to be installed under trussing with beam clamps, atop tripod stands or with threaded rod, all without drilling holes. American standard hardware is included, and metric hardware is available separately.

For anchoring into wall studs, mounting holes are offset in the brackets' base and placed on 12", 16" and 20" centers, depending on the width of the mount. Side arm slots increase the bracket's range of installation positions and sound isolation gaskets are included to isolate sound between the wall (or ceiling) and the speaker. These gaskets also protect the speakers' finish.

### Specifications:

Material:	Alloy steel plate
Finish:	Powder coat paint
Color:	Black
Working load:	See reference chart
Design factor:	10:1 ratio
Pack count:	2/carton

### Hardware Kit:

Includes an assortment of 1/4", 5/16" and 3/8" bolts and hardware plus two each of 1/8" and 1/4" thick sound isolation gaskets.

*Metric hardware is available separately.*

*Hardware for mounting to the wall or ceiling structure is not included.*

### Optional Accessories:

- Metric bolt kit (for M6, **2-1420** for M8, **2-1430** and for M10, **2-1440**)
- Safety Cable Kit (Standard length of 12,16, 25,40,80,154 and 180 inches)
- Snap On Cover Plate (Available in black and white)
- Truss clamps up to 2" diameter
- Beam clamps up to 7" wide beam
- Tripod adapters-standard 5" hole patterns
- Threaded rod, 1/4"-1/2" diameter up to 6'-0"
- Polestar™ adapts speaker mount to poles and columns



Truss and beam clamp ready



Tripod stand ready



**Allen Products Company Inc.**

1635 E. Burnett Street

Signal Hill, CA 90755 USA

Tel: (562) 424-1100 Fax: (562) 424-3520

Web Site: [www.allenproducts.com](http://www.allenproducts.com)

### Warning:

Mounting and rigging loudspeakers requires experienced professionals.

**Improperly installed loudspeakers can result in property damage, personal injury and/or liability to the installing contractor**

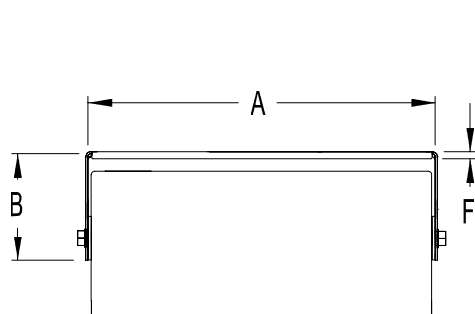
# U-Series

## Fixed Width Speaker Mount

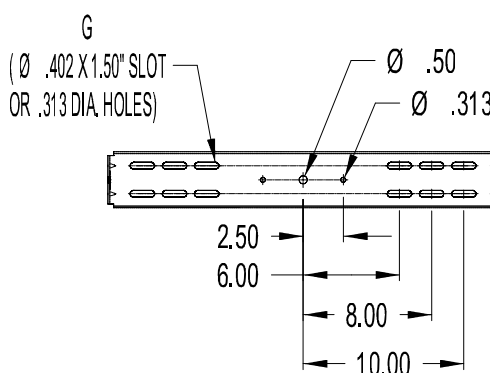
Dimensions: Inches/Metric

Product	Cover Plate Model #:	A	B	C	D	E	F	G	Shipping Weight/Pair	Working Load Limit
2-0450		13.25/337	5.35/135	4.25/108	2.25/57	2.0/51		Holes	3 lbs	25 lbs
2-0500		8.75/222	6.0/152	5.50/140	3.5/89	2.0/51		Holes	3 lbs	25 lbs
2-0550		10.25/260	5.86/149	4.75/121	2.75/70	2.0/51		Holes	3 lbs	25 lbs
2-0600 *	CP-0600	11.25/286	8.50/216	7.0/178	5.0/127	3.5/89	.50/13	Holes	7 lbs	60 lbs
2-0650		12.25/311	9.0/229	7.5/190	5.5/140	3.0/76		Holes	7 lbs	60 lbs
2-0700		14.25/362	10.0/254	8.5/216	6.5/165	3.0/76		Holes	8 lbs	60 lbs
2-0750 *	CP-0750	15.0/381	11.5/292	10.0/254	8.0/203	3.5/89	.50/13	Holes	9 lbs	60 lbs
2-0800		15.75/400	11.0/279	9.5/241	7.5/190	3.0/76		Holes	9 lbs	60 lbs
2-0850		16.25/413	10.5/267	9/229	7.0/178	3.0/76		Holes	9 lbs	60 lbs
2-0860 *		15.75/400	8.00/203	6.50/165	4.50/114	3.00/76		Holes	6 lbs	25 lbs
2-0880 *		16.5/419	16.9/429	15.38/391	13.9/340	4.3/108	.50/13	Slots	18 lbs	60 lbs
2-0900 *	CP-0900	17.0/432	8.48/215	6.98/177	4.98/126	3.5/89	.50/13	Slots	9 lbs	60 lbs
2-0950 *	CP-0950	17.75/451	13.0/330	11.5/292	9.5/241	3.5/89	.50/13	Holes	13 lbs	60 lbs
2-0980 *	CP-0980	18.5/470	9.5/241	8.0/203	6.0/152	3.5/89	.50/13	Holes	13 lbs	60 lbs
2-1000 *	CP-1000	19.25/489	9.0/229	7.5/190	5.5/140	3.5/89	.50/13	Slots	14 lbs	60 lbs
2-1050 *	CP-1050	20.25/514	8.5/216	7.0/178	5.0/127	3.5/89	.50/13	Holes	10 lbs	60 lbs
2-1060 *	CP-1060	23.25/591	11.5/292	10/254	8.0/203	3.5/89	.50/13	Holes	12 lbs	60 lbs
2-1100 *	CP-1100	24.06/611	14.5/368	13/330	11.0/279	3.5/89	.50/13	Holes	15 lbs	60 lbs
2-1150 *	CP-1150	21.5/546	9.5/241	8.0/203	6.0/152	3.5/89	.50/13	Holes	12 lbs	60 lbs
2-1200 *	CP-1200	30.64/778	10.2/260	8.75/222	6.75/172	3.5/89	.50/13	Holes	16 lbs	60 lbs
2-1230 *	CP-1230	28.75/730	8.0/203	6.5/165	4.5/114	3.5/89	.50/13	Holes	15 lbs	60 lbs
2-1250		30.25/762	13.2/335	10.7/272	N/A	8.5/203	.75/13	Slots	45 lbs	150 lbs
2-1260		31.00/787	17.2/437	14.7/373	N/A	8.5/204	.75/19	Slots	45 lbs	150 lbs
2-1290 *	CP-1290	44.5/1118	6.5/165	5.0/127	3.0/76	3.5/89	.50/13	Holes	17 lbs	60 lbs
2-1300 *	CP-1300	25.13/638	10.5/267	9.0/229	7.0/178	3.5/89	.50/13	Holes	14 lbs	60 lbs
2-1320 *	CP-1320	26.5/673	6.5/165	5.0/127	3.0/76	3.5/89	.50/13	Holes	11 lbs	60 lbs

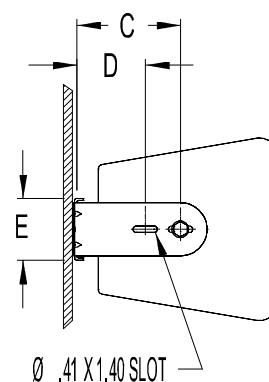
\* Polestar mountable



Top view



Front view



Side view



**Allen Products Company Inc.**  
 1635 E. Burnett Street  
 Signal Hill, CA 90755 USA  
 Tel: (562) 424-1100 Fax: (562) 424-3520  
 Web Site: [www.allenproducts.com](http://www.allenproducts.com)

**Warning:**

Mounting and/or rigging loudspeakers requires experienced professionals.  
*Improperly installed loudspeakers can result in property damage, personal injury and/or liability to the installing contractor.*

**SIMPLE SOLUTIONS FOR AUDIO AND VIDEO INSTALLATIONS**