

SONY

3LCD Laser Light Source Projector VPL-FWZ65

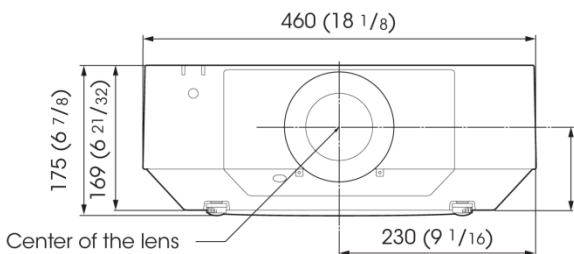
Key Features

- 6,000 lumens
- Native WXGA (1,280 x 800) Resolution
- Laser Light Source “Z-Phosphor” and 3LCD Projection System
- Bright Era™ Long-lasting Optics
- Reality Creation
- Contrast Enhancer
- 20,000h*1 of Virtually Zero Maintenance Operation
- Hassle-free Automatic Filter Cleaning
- Energy-efficient Functions
- Powered Lens Shift Function
- Variety of Optional Lenses
- Tilt Angle Free
- HDBaseT™ Compatibility
- Edge Blending
- 34dB/28dB Super Quiet Operation Noise
- Professional Calibration
- Instant ON/OFF
- Constant Brightness Mode

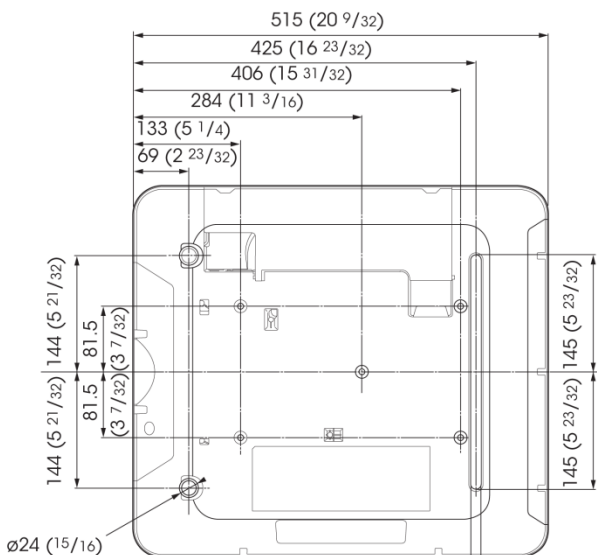
*1 Actual hours may vary depending on usage environment

Dimensions (Front)

Unit: mm (inches)



Dimensions (Bottom)



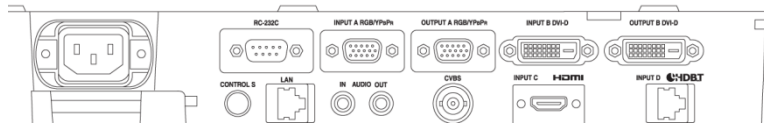
WXGA/6,000lm

| | | |
|-----------------------------------|-----------------------|---|
| Optical | | |
| Light Output / Color Light Output | | 6000 lumens (high mode) 4000 lumens (Std. mode) |
| LCD Panels | | 0.76" x 3 BrightEra LCD Panel |
| Panel Display Resolution | | WXGA (1280 x 800 dots) |
| Contrast Ratio | | 10,000:1 (Full white/full black) *1 |
| Light source | | Laser diode |
| Projection Lens *2 | Zoom / Focus | Approx. 1.6x Powered / Powered |
| | Lens Shift | Powered, Vertical : -5%, +60% Horizontal : +/- 32% |
| | Throw Ratio | 1:39:1 to 2.23:1 |
| Screen Size | | 40" to 600" (depends on the lens) |
| Interface | | |
| Computer and Video Input/Output | INPUT A | Mini D-sub 15-pin (RGB/Y Pb Pr) Audio: Stereo mini jack |
| | INPUT B | DVI-D (HDCP support) |
| | INPUT C | HDMI |
| | INPUT D | RJ45 (HDBaseT) |
| | VIDEO IN | BNC |
| | OUTPUT A | Mini D-sub 15-pin |
| Control Signal Input/Output | OUTPUT B | DVI-D (HDCP not supported) |
| | RS-232C | D-sub 9 pin |
| | LAN | RJ45, 10BASE-T/100BASE-TX |
| | Control S IN | Stereo mini jack (DC5V) |
| General | | |
| Scanning Frequency | | H: 15 to 92kHz, V: 48 to 92Hz |
| Display Resolution | Computer signal input | Maximum display resolution : 1920x1200 dots |
| | Video signal input | NTSC, PAL, SECAM, 480/60i, 576/50i, 480/60p, 576/50p, 720/60p, 720/50p, 1080/60i, 1080/50i, The following items are available for digital signal only: 1080/60p, 1080/50p, 1080/24p |
| Color System | | NTSC3.58, PAL, SECAM, NTSC4.43, PAL-M, PAL-N, PAL60 |
| UPC Code | | 0 2724 288634 6 (Color : W) |
| Power Requirements | | AC 100V to 240V, 5.5A to 2.3A, 50Hz/60Hz |
| Power Consumption | | 464W (AC 100V-120V) 453W (AC 220V-240V) |
| Standby Mode Power Consumption | | 15.0W (Std) / 0.5W (Low) (AC 100V-120V) 13.3W (Std) / 0.5W (Low) (AC 220V-240V) |
| Acoustic Noise (Light Mode) | | 34dB (High), 28dB (Standard), 34dB(Extended) |
| Dimensions (W x H x D) | | 460 x 169 x 515 mm 18 1/8 x 6 3/5 x 20 3/8" |
| Mass | | 16kg (34lb) |
| Optional Accessories | | |
| Projector Suspension Support | | PAM-600, PSS-650 (for VPLL-3003 lens) PSS-650P (extension pole for PSS-650) |
| Service Parts | | |
| Replacement Filter | | 4-574-581-01 |
| Replacement Remote | | 1-492-891-11 (RM-PJ27) |

*1 With auto light dimming activated

*2 With supplied standard lens.

Connector Panels



Optional Lenses

| | VPLL-3003 | VPLL-3007 | VPLL-Z3009 | VPLL-Z3024 | VPLL-Z3032 |
|-------------|------------------------|---------------------------|----------------------------|----------------------------|----------------------------|
| TR | 0.33:1 | 0.65:1 | 0.85 to 1.0 | 2.34 to 3.19 | 3.18 to 4.84 |
| Aperture | f/1.85 | f/1.75 | f/1.85 to 2.10 | f/2.00 to 2.30 | f/2.00 to 2.40 |
| Lens Shift | V: +/--5% H: +/--5% | V: +10%/ -5% H: +/- 4% | V: +50%/ -5% H: +/- 24% | V: +60%/ -5% H: +/- 32% | V: +60%/ -5% H: +/- 32% |
| Screen Size | 80"-300" | 60"-300" | 60"-300" | 40"-600" | 40"-600" |