

Ki Pro® | ULTRA Plus



Multi-Channel HD Recorder
4K/UltraHD/2K/HD Recorder and Player

ProRes Avid DNxHD® MXF

AJA
VIDEO SYSTEMS

Ki Pro® | ULTRA Plus



Multi-Channel HD Recorder 4K/UltraHD/2K/HD Recorder and Player

Supports the latest technologies and workflows, including up to 4K 60p with HDMI 2.0 support.

Ki Pro Ultra Plus offers 4K/UltraHD/2K/HD recording and playback up to 4:4:4 60p, or up to 4-Channels of simultaneous HD recording with broad video format support and flexible input output connectivity, including HDMI 2.0 and fiber.

\$3,995 US MSRP*

[Find a Reseller](#)

Ki Pro Ultra Plus is a Multi-Channel Apple ProRes recorder offering up to 4-Channels of simultaneous HD recording, or in Single-Channel mode a 4K/UltraHD/2K/HD Apple ProRes® or Avid DNxHD® MXF recorder and player. Ki Pro Ultra Plus supports the latest connectivity, as well as large raster high frame rate workflows, including 4K 60p.

3G-SDI, fiber and full HDMI 2.0 digital video connectivity and a wealth of analog and digital audio connectivity answers any project's demand for efficient, powerful and flexible workflows.

Designed to be either portable or rackmountable with half rack wide 2RU high dimensions, it's well suited for use in studio/truck environments in addition to on-set and even digital signage applications. The Ki Pro Ultra Plus is designed to meet the growing demand for 4K and UltraHD capable recorder products with full support for current HD projects.

Ki Pro Ultra Plus enables manageable large raster workflows with the

efficiencies of Apple ProRes, supporting a broad range of video formats and frame rates recorded directly to AJA's proven and reliable Pak Media, offering the lowest cost per GB available today.

Next generation pristine 4K/UltraHD 50/60p recording in Apple ProRes HQ is offered utilizing AJA Pak1000 SSD media, complete with full rollover capabilities from drive to drive. This ensures long recording times for the most demanding projects.

Smooth slow motion playback can be obtained easily with full control via the RS-422 serial connection or through the simple and intuitive on unit menu system and through the Ki Pro Ultra Plus' web interface.

Menus and images are beautifully rendered on a new high resolution LCD display enabling detailed playback and monitoring in all environments.

Ki Pro Ultra Plus, the ultimate next generation digital recorder and player.



4K,12-bit Full Raster Workflows

Next generation 4K/UltraHD 50/60p recording and playback are attainable all the way up to Apple ProRes HQ when using AJA Pak1000 SSD media with Ki Pro Ultra Plus. 4K/UltraHD is supported through 4x 3G-SDI, HDMI 2.0 or optional Fiber inputs and outputs.

Ki Pro Ultra Plus not only supports true 4K at 4096 x 2160p for digital cinema and high quality UltraHD for broadcast production, it also offers the color depth to match with ProRes 4444 (XQ).

Any shoot or project benefits from the fabulously rich colors and smooth gradations across the luminance and chroma range that 12-bit makes possible with full 4:4:4 support.

VFX work benefits from Ki Pro Ultra Plus' 12-bit support on 4x 3G-SDI input to captured Apple ProRes 444 files, resulting in clean green screen plates across the 4K/UltraHD/2K/HD raster landscape for easy and detailed postproduction manipulation. With full HDMI 2.0, you can monitor it all from 4:2:2 YCbCr to full 4:4:4 RGB in 12-bit.



Multi-Channel HD Recording

Record 1, 2, 3 or 4-Channels of beautiful HD up to 1080p 50/60 in Apple ProRes simultaneously with Ki Pro Ultra Plus.

Simplify your multi-camera productions by running up to four cameras per Ki Pro Ultra Plus and save power, space, time and effort on set, in the studio and when setting up OB trucks.

Ki Pro Ultra Plus even allows independent profile support per channel in Multi-Channel mode; for example, select high resolution Apple ProRes HQ for high quality finishing and use a second input to record Apple ProRes (Proxy) for an efficient editing pipeline.

Starting with input 1, add channels as needed in order when utilizing like raster size and frame rate, and record your HD Apple ProRes files on the same AJA Pak1000 media. Ki Pro Ultra Plus even allows rollover to a second Pak1000 for hours of uninterrupted multi-channel recording.



Ki Protect

Reliable Storage Media

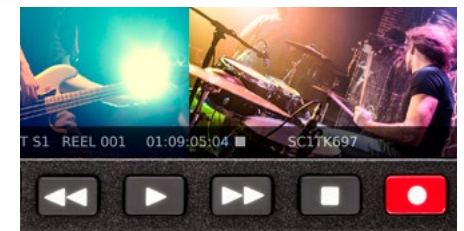
Ki Pro Ultra Plus captures directly to AJA Pak SSD Media.

Pak1000 is the perfect companion for Ki Pro Ultra Plus offering 1TB of fast SSD media for up to 4K recording at 60p in ProRes HQ and is required for Multi-Channel HD capture. Pak512 and Pak256 media is ideal for lower frame rate projects.

The twin media slots on the Ki Pro Ultra Plus allow fast media changes and rollover recording; recording starts on one media module and continues onto the second module once the first is full.

Ki Protect provides peace of mind, ensuring that in the event of power loss or accidental media removal during recording, frames already recorded are preserved and recoverable.

Employ the optional Pak Dock which features USB 3.0 and Thunderbolt™ connectors for lightning fast data transfers to your workstation of choice.



Familiar Controls and Operation

Anyone familiar with the operation of a tape deck will feel immediately comfortable when working with Ki Pro Ultra Plus. Just like a traditional tape deck, Ki Pro Ultra Plus features straightforward and dedicated transport buttons - record, play, stop, rewind, fast forward - making the device easy to operate with minimal training time. The current status of the system and key configuration information is clearly displayed on the beautiful built-in high resolution LCD screen. Additional operational information can be found in the STATUS menu which can be accessed even when recording or playing back.

The Ki Pro Ultra Plus operating system offers users a logical menu structure that is easy to navigate with menu parameters presented in clear and understandable language.

Ki Pro® | ULTRA Plus



HDMI 2.0: Colorful Simplicity

Full HDMI 2.0 support on Ki Pro Ultra Plus offers deep color support all the way up to 4:4:4 12-bit RGB, perfect for rich color capture from affordable HDMI cameras and beautiful playback on the latest HDMI 2.0 displays.

A single cable can affordably transport both UltraHD or HD video and clean 24-bit 48hz 8-Channel audio to or from common HDMI 2.0 devices for a simple setup; perfect for editors, ProAV, independent producers and anyone seeking to utilize the latest affordable monitoring.



Record to External Storage

Pak-Adapt-eSATA (sold separately) is a Pak Media sized adapter with an eSATA connector that allows the user to attach a qualified RAID or single volume storage via an eSATA cable so that it may be used as a recordable drive. eSATA connectivity provides the bandwidth needed for 4K 422 HQ at up to 30fps. You can even connect two Pak-Adapt-eSATAs to the Ki Pro Ultra Plus for more flexibility in the field. To find out more about using qualified external storage with Ki Pro Ultra Plus and Pak-Adapt-eSATA, please visit our website.



Professional Connections

The video and audio connections on the rear panel of the Ki Pro Ultra Plus offer next generation connectivity with 3G-SDI, HDMI 2.0 and fully integrated fiber* inputs and outputs. Fiber allows direct incorporation into dedicated fiber networks for transmission and reception as far as 10km. AES and analog XLR balanced audio, LTC, RS-422 and LAN, plus headphone jack and unbalanced RCA analog audio out all included.



exFAT and HFS+ Support

Ki Pro Ultra Plus allows you to use the file system that suits your needs. Full flexibility is provided to format your recording media as either exFAT or HFS+ within Ki Pro Ultra Plus itself or from your desktop computer. Work seamlessly with Avid ProRes files or Avid DNxHD files on the OS that suits your workflow.

**SFP modules not included*



4K and HD Monitoring

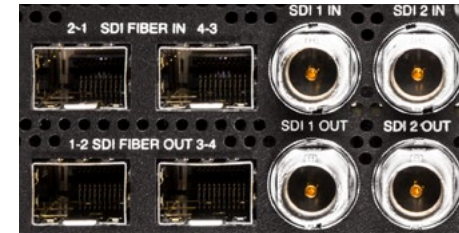
Ki Pro Ultra Plus provides full resolution outputs for 4K, UltraHD and HD over 3G-SDI, fiber and HDMI, including the latest affordable UltraHD monitors using HDMI for on-set quality checks. An additional dedicated 2K and HD-SDI monitor output can be fed to any affordable and existing HD-SDI display.



Closed Captioning Support

If you need to record or playout video with Closed Captioning embedded, Ki Pro Ultra Plus is fully compatible with your needs.

Ki Pro Ultra Plus recognizes CEA-708 within incoming SDI Inputs and encodes the Closed Captioning to your Apple ProRes recorded file. Upon playback, you can utilize the Closed Captioning within a recorded file over Ki Pro Ultra Plus' 4 x 3G-SDI outputs.



Two Sample Interleave IO

Ki Pro Ultra Plus supports both Square Division Quad Split format and Two Sample Interleave giving a wide number of options to both record and playback 4K and UltraHD. Set up is easy, with Ki Pro Ultra Plus sensing the format being delivered in its "Follow Input" mode. Ki Pro Ultra Plus also allows you to select separate quad modes for both in and out, giving an additional conversion feature for when you need it.



RS-422 Control

RS-422 control allows Ki Pro Ultra Plus to integrate easily with supported editing systems and external controllers allowing it to fulfill several of the functions of a traditional VTR. Supported NLEs can even perform assemble edits directly to the Ki Pro Ultra Plus.

Ki Pro® | ULTRA Plus

Interface

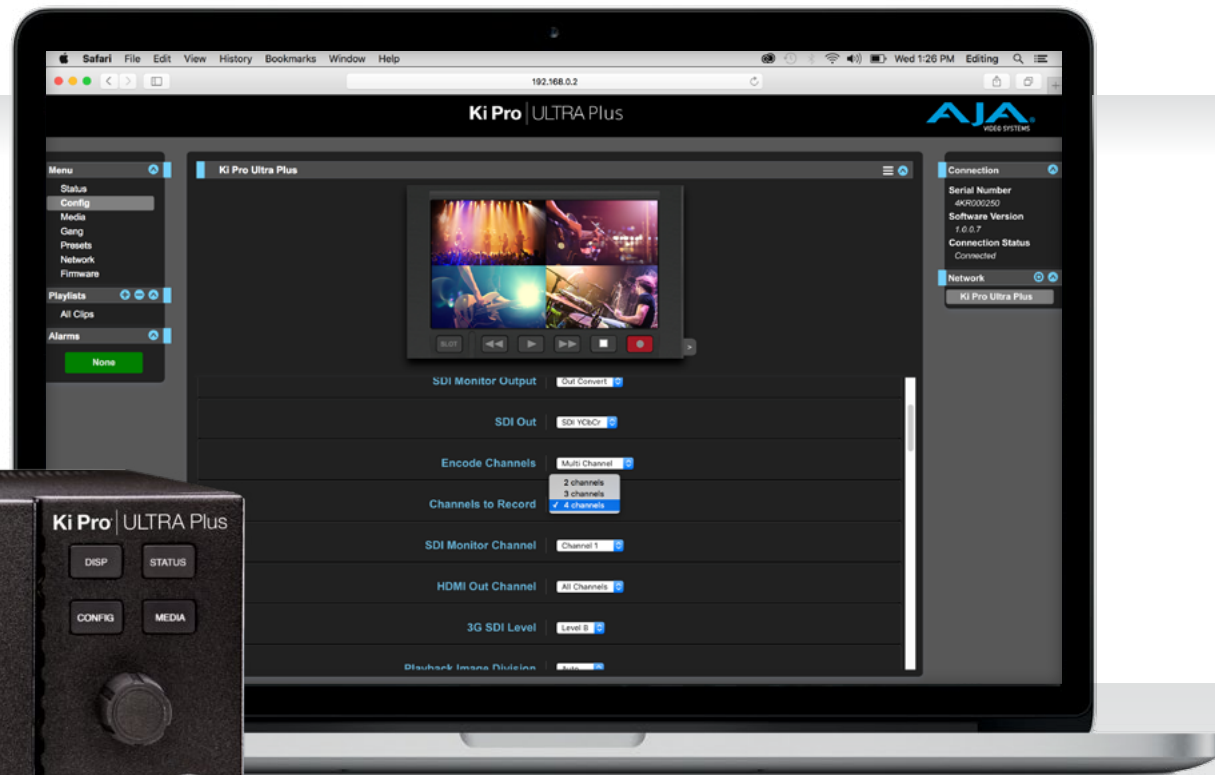


[Click here](#)

For full product specifications visit www.aja.com/en/products/ki-pro-ultra-plus/#techspecs

Ki Pro® | ULTRA Plus

High Quality LCD,
Intuitive UI



Interface with Ki Pro Ultra Plus

Ki Pro Ultra Plus features a beautiful high resolution HD display for pristine monitoring of your material, and serves as your interface to Ki Pro's familiar and intuitive menu system. The detailed overlay UI includes on-screen keyboard functionality and a clear view of the powerful yet simple to operate UI, all pristinely presented on the 4.8" 720p LCD display.

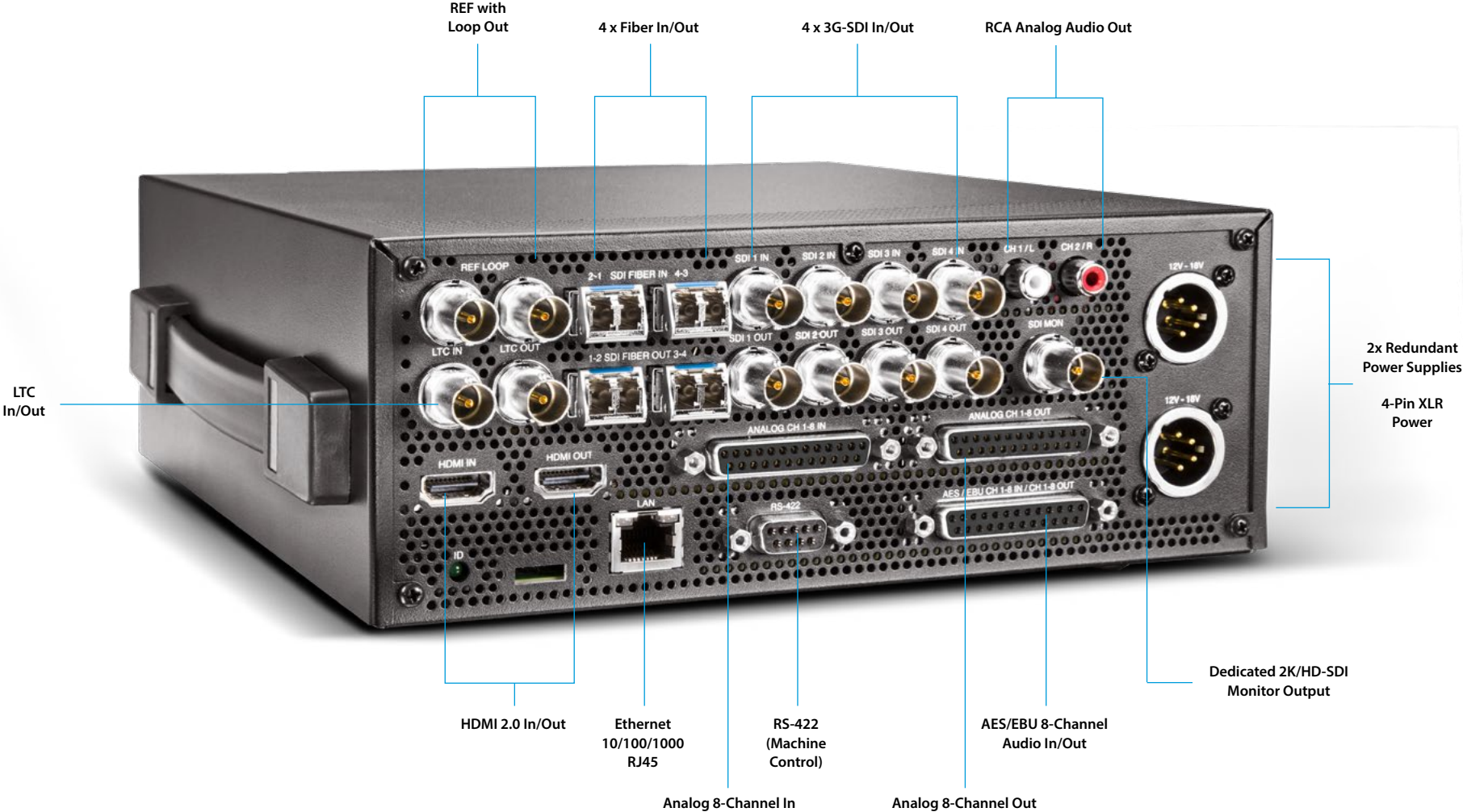
When remote from Ki Pro Ultra Plus, utilize the fast LAN connectivity and access the internal web server UI from any web browser on any OS. Ki Pro Ultra Plus' web interface allows firmware uploading, configuration of all settings, the ability to save presets and a simple pane for configuring gang recording when utilizing multiple units on a shoot.

Choice, at your fingertips.

A rotary selection knob allows for quick and accurate adjustment of all configuration and settings options. Switch confidently between Status, Configuration and Media grouped settings with a touch of the clearly labeled buttons, and rotate the selection knob to choose the menu item for the parameter you wish to affect. The robust selection knob imparts confidence during selection through clear mechanical feedback. Then, once you found the setting you desire from a list within any menu item, simply click the rotary dial to set your preferred option.

To preserve your choices, Ki Pro Ultra Plus offers the ability to save and reload presets, ensuring consistency throughout a project.

Connections



Ki Pro® | ULTRA Plus

Workflow



Ki Pro® | ULTRA Plus

Accessories



Pak Media

Pak Media is a high capacity solid state drive encased in a protective housing with rugged connection engineered to handle the rigors of repeated use in the field. Available in 1TB, 512GB and 256GB capacities.



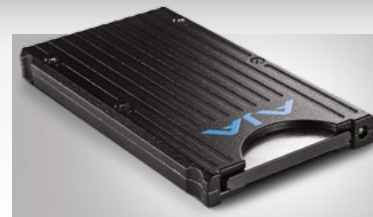
Pak Dock

External Pak Dock with Thunderbolt and USB 3.0 connections for fast transfer of media to a host computer.



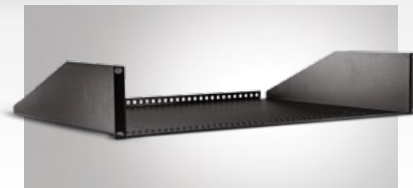
Pak-Adapt-eSATA

Pak-Adapt-eSATA is a Pak Media sized adapter with an eSATA connector that allows the user to attach a qualified RAID or single volume storage via an eSATA cable so that it may be used as a recordable drive.



Pak-Adapt-CFast

Pak-Adapt-CFast enables the use of qualified CFast cards in Ki Pro Ultra Plus for recording and playback.



KPU-Shelf

Ki Pro Ultra Plus features a small footprint for desk top use or can be mounted side by side using the additional KPU-Shelf for rackmount applications.

Ki Pro® | ULTRA Plus

Tech Specs

Video Formats

- (4K) 4096 x 2160p 23.98, 24, 25, 29.97, 30, 50, 59.94, 60
- (4K) 4096 x 2160PsF 23.98, 24, 25, 29.97*
- (UltraHD) 3840 x 2160p 23.98, 24, 25, 29.97, 30, 50, 59.94, 60
- (UltraHD) 3840 x 2160PsF 23.98, 24, 25, 29.97*
- (2K) 2048 x 1080p 23.98, 24, 25, 29.97, 30, 50, 59.94, 60
- (HD) 1080p 23.98, 24, 25, 29.97, 30, 50, 59.94, 60
- (HD) 1080i 25, 29.97, 30
- (HD) 1080PsF 23.98, 24, 25**, 29.97**
- (HD) 720p 50, 59.94, 60

*Only 4 x 1.5G-SDI, 10-bit 4:2:2 YCbCr, Square Division

**25 and 29.97 requires Record Type>PsF selection

Codec Support

- Apple ProRes 4444 XQ, 4K/UltraHD/2K/HD up to 30 fps
- Apple ProRes 4444, 4K/UltraHD/2K/HD up to 30 fps
- Apple ProRes 422 (HQ)
- Apple ProRes 422
- Apple ProRes 422 (LT)
- Apple ProRes 422 (Proxy)
- Avid DNxHD HQX (220x)*
- Avid DNxHD SQ (145)*
- Avid DNxHD LB (36)**
 - (HD) 1080p 23.98, 24, 25, 29.97, 50, 59.94
 - (HD) 1080i 25, 29.97
 - (HD) 1080PsF 23.98, 24, 25, 29.97
 - (HD) 720p 50, 59.94

*Avid DNxHD only supported for 1080 and 720 resolutions

**Avid DNxHD 36 only supported for 1080p

Codec Container

- Apple ProRes .MOV
- AVID DNx MXF or .MOV

Removable Storage

- 2 x slots, AJA Pak SSD media Pak256, Pak512, Pak1000*
 - Pak-Adapt-eSATA**, Pak-Adapt-CFast**
- *4K/UltraHD 50, 59.94, 60 ProRes 422 (HQ) recording requires genuine AJA Pak1000 media
- **Only with AJA qualified media

Video Input Digital

- 4x 3G-SDI, SMPTE-292/296/424, 10-bit (12-bit input supported)
- 4x Fiber LC*, 3G-SDI, SMPTE-297, 10-bit
- 4K/UltraHD 4:2:2 or 4:4:4 (4 x BNC or Fiber LC*)
- Dual Link 4:2:2, 4:4:4 (2 x BNC or Fiber LC*)
- Single Link 4:2:2, 4:4:4 (1 x BNC or Fiber LC*)
- 1x HDMI standard type A connector
- HDMI v2.0
 - 4:2:2 YCbCr 8/10/12bit
 - 4:4:4 RGB/YCbCr 8bit
 - 4:2:0 YCbCr 8/10/12bit (deep color)
 - 4:4:4 RGB 10/12bit (deep color)

*Optional SFP Modules

Video Output Digital

- 4 x 3G-SDI, SMPTE-292/296/424, 10-bit
- 4x Fiber LC* 3G-SDI, SMPTE-297, 10-bit
- 4K/UltraHD 4:2:2 or 4:4:4 (4 x BNC or Fiber LC*)
- Dual Link 4:2:2 or 4:4:4 (2 x BNC or Fiber LC*)
- Single Link 4:2:2 or 4:4:4 (1 x BNC or Fiber LC*)
- 1x HDMI standard type A connector
- HDMI v2.0
 - 4:2:2 YCbCr 8/10/12bit
 - 4:4:4 RGB/YCbCr 8bit
 - 4:2:0 YCbCr 8/10/12bit (deep color)
 - 4:4:4 RGB 10/12bit (deep color)

*Optional SFP Modules

Audio Input Digital

- 16-Channel, 24-bit SDI/Fiber embedded audio, 48 kHz sample rate, synchronous
- 8-Channel, 24-bit HDMI embedded audio, 48 kHz sample rate, synchronous
- 8-Channel, AES/EBU via (1/2 x DB-25 TASCAM pinout)

Audio Input Analog

- 8-Channel, 24-bit A/D analog audio, 48 kHz sample rate (1 x DB-25 TASCAM Pinout)
- +24dBu full scale digital
- +/- 0.2dB 20 Hz to 20 kHz frequency response

Audio Output Digital

- 16-Channel, 24-bit SDI/Fiber embedded audio, 48 kHz sample rate, synchronous
- 8-Channel, 24-bit HDMI embedded audio, 48 kHz sample rate, synchronous
- 8-Channel, AES/EBU via (1/2 x DB-25 TASCAM pinout)

Audio Output Analog

- Stereo unbalanced headphone jack (1 x 3.5mm jack) with volume control
- 8-Channel, 24-bit D/A analog audio, 48 kHz sample rate (1 x DB-25 TASCAM pinout)
- 2-Channel unbalanced 2 x RCA connectors

Recording Mode

- Multi-channel HD Apple ProRes recording*
 - Single-channel 4K/UltraHD/2K/HD recording
- *Multi-channel HD recording is only supported for Apple ProRes with AJA Pak1000 media

Playback Mode

- Single-channel HD/2K/UltraHD/4K recording

Timecode

- SDI RP188/SMPTE 12M via SDI BNC
- LTC input (1 x BNC)
- LTC output (1 x BNC)

Reference Input

- External, 2 x BNC
- Looping, nonterminating
- Blackburst or tri-level sync

Network Interface

- 10/100/1000 Ethernet (RJ-45)
- Embedded web server for remote control via REST
- Video Confidence Monitor via Web Interface
- Clip upload/download via Web Interface in DATA-LAN mode
- Configuration and Transport Control via WEB Interface

Machine Control

- RS-422, 1 x DE-9 female connector, Sony 9-pin protocol
- 9-pin D-connector pinout is as follows:

1	GND	6	GND
2	TX-	7	TX+
3	RX+	8	RX-
4	GND	9	GND
5	No Connection	10	GND

User Interface

- Rotary selector knob
- Dedicated, backlit transport controls and menu buttons
- Large 1280 x 720 TFT LCD display with Video Monitor and Menu/Status Overlays

Closed Captioning Support

- CEA-708, CEA-608

File System Support

- HFS+, exFAT

Size (w x d x h)

- 8.64" x 9.34" x 3.31" (219.46mm x 237.24mm x 84.08mm)

Weight

- 5.6 lbs (2.6 kg)

Power

- Dual, redundant, 5.4A max, 35W-60W typical-65W Max
- 100-240 VAC 50/60 Hz (adapter)
- 12-18Vdc 4-pin XLR (chassis)

Environment

- Safe Operating Temperature: 0 to 40 degrees C (32 to 104 degrees F)
- Safe Storage Temperature (Power OFF): -40 to 60 degrees C (-40 to 140 degrees F)
- Operating Relative Humidity: 10-90% noncondensing
- Operating Altitude: <3,000 meters (<10,000 feet)

[Click here](#)

For full product specifications visit www.aja.com/en/products/ki-pro-ultra-plus/#techspecs

Three Year Warranty

AJA Video warrants that Ki Pro Ultra Plus will be free from defects in materials and workmanship for a period of three years from the date of purchase.

About AJA Video Systems, Inc.

Since 1993, AJA Video has been a leading manufacturer of video interface and conversion solutions, bringing high quality, cost effective digital video products to the professional, broadcast and postproduction markets.

AJA products are designed and manufactured at our facilities in Grass Valley, California, and sold through an extensive sales channel of resellers and systems integrators around the world. For further information, please see our website at www.aja.com