



Catalog # 5 April 2017

A revolutionary approach for eliminating Vibration (Seismic) Activity or Vibration that effect the Picture Quality of any make or type of Bullet, Dome or Pendant Cameras

Benefit from our new Anti-Vibration Industrial Strength Products which are designed specifically to cure the most difficult situations where Vibration is a problem



- Road Bridges
- Railroads
- Ports
- Plant Buildings
- Industrial Sites
- Construction Sites
- Shipping and Cruise Ships

By going beyond the ordinary, our Military Grade Components guarantees an Installer will benefit by saving them Time, Money and Reduce the Costs of any Job

Designed by

A blue handwritten signature that reads 'Nigel B. Design'.

Patent Applied For



Designed and Manufactured in the USA by:

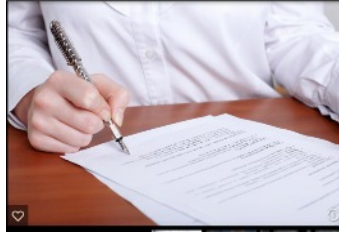
NIGEL B DESIGN, INC. 4163 ST CLAIR AVE, STUDIO CITY, CA 91604

TEL: (818) 487-9323 * FAX: (818) 766-9805

E-MAIL: securitysales@nigelbdesign.com

WEB SITE: www.nigelbdesign.com

NIGEL B DESIGN'S PRODUCTS ARE TAA COMPLIANT



WHAT IS TAA COMPLIANT

TAA refers to the Trade Agreements Act (19 USC & 2501-2581) which is intended to foster fair and open International Trade. TAA requires that the US Government may only acquire US Made or designated Country End Products. This Act requires that Contractors must Certify that each End Product meets the applicable Requirements.

End Products are those Articles, Materials and Supplies to be acquired for Public Use.*This includes items that have been "Substantially Transformed" in the United States.

Because all Nigel B Design Products are Manufactured and Assembled in the USA they are eligible to be added to a Contractor's GSA Listing

**All Nigel B Design Products shown in this Catalog are fully
TAA Compliant under the Buy America Act**



I wish to thank the many Industry Veterans who has helped me in producing the many unique Solutions shown in this Catalog. As Craig Dalman who used to be at Pelco (Schneider Electric) said "I believe that you have solved some interesting problems for the Security Industry."



Nigel B Design is a Axis Partner

OUR BASIC MOUNTING BOX

THE BASIC MULTI-PURPOSE BOX IS OUR NON ANTI-VIBRATION UNIT

READY ASSEMBLED

Only requires a Basic Camera Plate or Camera Arm or other Accessories to be added



The Basic Multi-Purpose Box has (3) 3/4" dia. Cable Ports that can be used for either Entry or Exit purposes

- Mount any Camera to any Flat Surface
- Mount any Camera to a Pole
- Mount any (3) Cameras to our Corner Wall Bracket
- Mount up to any (4) Cameras to our Multi-Position Bracket
- Mount any Camera to any I Beam or Girder
- Choice of Vertical or Horizontal Mounting



Basic Mounting Box with Camera Plate attached



The Camera Arm can also be attached to the Basic Mounting Box



Basic Mounting Box attached to Unistrut



Basic Mounting Box Horizontally Mounted using 2 Pole Brackets



Blanking Plugs can be replaced at any time with 3/4" dia. EMT Electrical Fittings



Almost any 3/4" Electrical fitting can be incorporated in situations that require additional customization



Basic Mounting Box Vertically Mounted using 2 Pole Brackets



Image shows how the Cables are routed inside Protecting them from the Elements

CONCEALED WIRING PROTECTS THE WIRING FROM THE WEATHER AND THEFT

All wiring or cabling is totally routed INSIDE each Installed Mounted Component providing protection from the Weather. This also helps protect the security of the installation from being compromised by a thief being unable to cut the wires to render a Camera inoperable.

EXAMPLES USING THE BASIC MOUNTING BOX



Basic Mounting Box with 3 IN 1 Adaptor



Bullet Camera with the Basic Multi-Purpose Box Mounted to a Wall or Flat Surface



Dome Camera with the Basic Multi-Purpose Box, Pole Mounted



On the following pages each Attachment Component is described in detail with examples of how this Revolutionary Range of Components make any job Faster, Easier and will save an Installer money

THE HEAVY DUTY ANTI-VIBRATION ADAPTOR FOR USE WITH THE CAMERA ARM

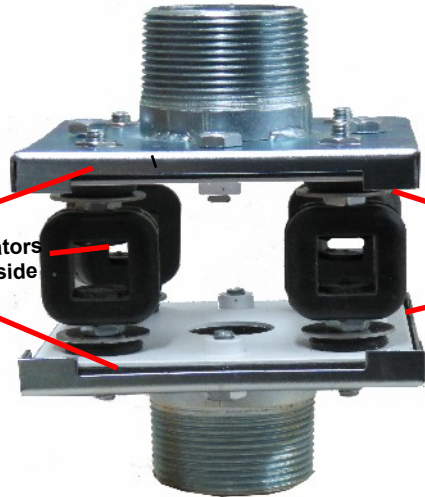


Heavy Duty Anti-Vibration Adaptor with Cover

(2) Anti-Vibration Pads

(4) Isolators
(2) Per side

(4) Anti-Sway Control Grommets
(2) Per side



Heavy Duty Anti-Vibration Adaptor with Cover removed showing the various Components



The Left Picture uses (1) Camera Arm, Part # NB-CA, Heavy Duty Anti-Vibration Adaptor Part # NB-HDSA, **Customer Supplied Camera**

The Middle Picture is using the I Beam/Girder Mount Part # NB-EXP81B, **Customer Supplied 1 1/2" dia. Pole**, 1 1/2" Female-Female 2" long Converter Part # NB-2064, Heavy Duty Anti-Vibration Adaptor Part # NB-HDSA, **Customer Supplied Camera**

The Right Picture is using: (1) Camera Arm Part # NB-CA, **Customer Supplied Unistrut**, (1) Heavy Duty Anti-Vibration Adaptor Part # NB-HDSA **Customer Supplied Camera**

BENEFIT FROM OUR EXCLUSIVELY DESIGNED ANTI-VIBRATION CAMERA MOUNTING SYSTEM WITH ITS MULTIPLE METHODS OF INSTALLATION



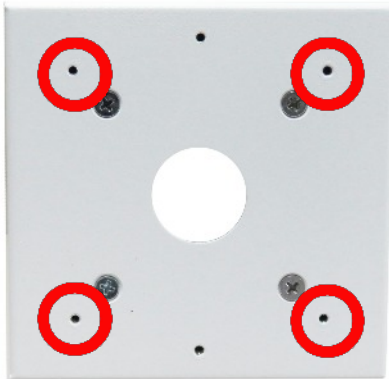
Anti-Vibration Mounting Box

MOUNTING OPTIONS

- Mount any Camera to any Flat Surface
- Mount any Camera to a Pole
- Mount any Camera to any I Beam or Girder
- Vertical Unistrut Mounting
- Horizontal Unistrut Mounting
- Ceiling Installation



I Beam/Girder Bracket



Typical Anti-Vibration Camera Plate Showing Captive Nuts



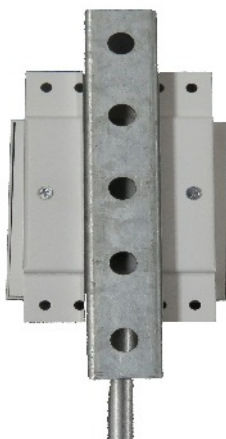
Red Circles represent 6.32 Captive Nuts for Attaching the Camera To the Camera Plate



Camera Arm attached to Horizontal Unistrut



Camera Arm attached to Vertical Unistrut



Mounting Box #2 with Camera Plate attached to Unistrut



Security Camera Mounted on a Pole above the Ceiling Tiles

NIGEL B DESIGNS RANGE OF ATTACHMENT COMPONENTS FOR ANY SECURITY CAMERA INSTALLATIONS

This Flexibility allows an Installer to choose which Component is right for the job and makes the installation of different types of Cameras that much easier



1 5/8" Unistrut®Channel
(Customer Supplied Item)



Unistrut® Bracket
attached to Unistrut®



Camera Arm
attached to a Vertical
Unistrut® Channel



3 Cameras mounted Horizontally
on Unistrut



Single Camera mounted
Horizontally on Unistrut Channel

Using Unistrut Channel allows any Camera to be attached either Vertically or Horizontally



Unistrut shown with Mounting
Bracket for (4) Cameras



Single Unistrut Bracket for (1)
Camera



4 Position Unistrut Bracket



4 Camera Arms shown mounted
on the 4 position Unistrut Bracket

THE CORNER WALL MOUNTING BRACKET- WHEN USED WITH THE 3 IN 1 ADAPTOR

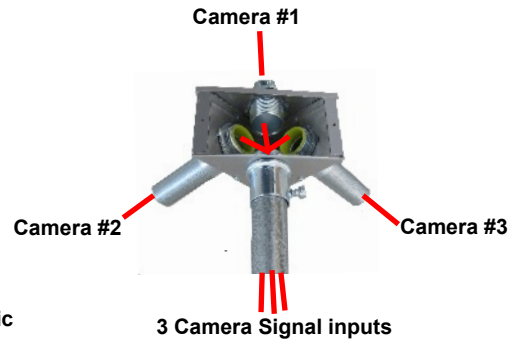
The Corner Wall Bracket allows three camera to be mounted on the corner of a Building, used with the 3 in 1 Adaptor allows three inputs to be split into one for each Camera.



3 IN 1 Adaptor shown with
Front Cover fitted



Underside View shown with (3) Basic
Boxes fitted



The Corner Wall Bracket allows 3 Cameras to be attached to three sides of any corner surface and when used with the 3 IN 1 Adaptor allows each Camera to have its own connection



Corner Wall Bracket

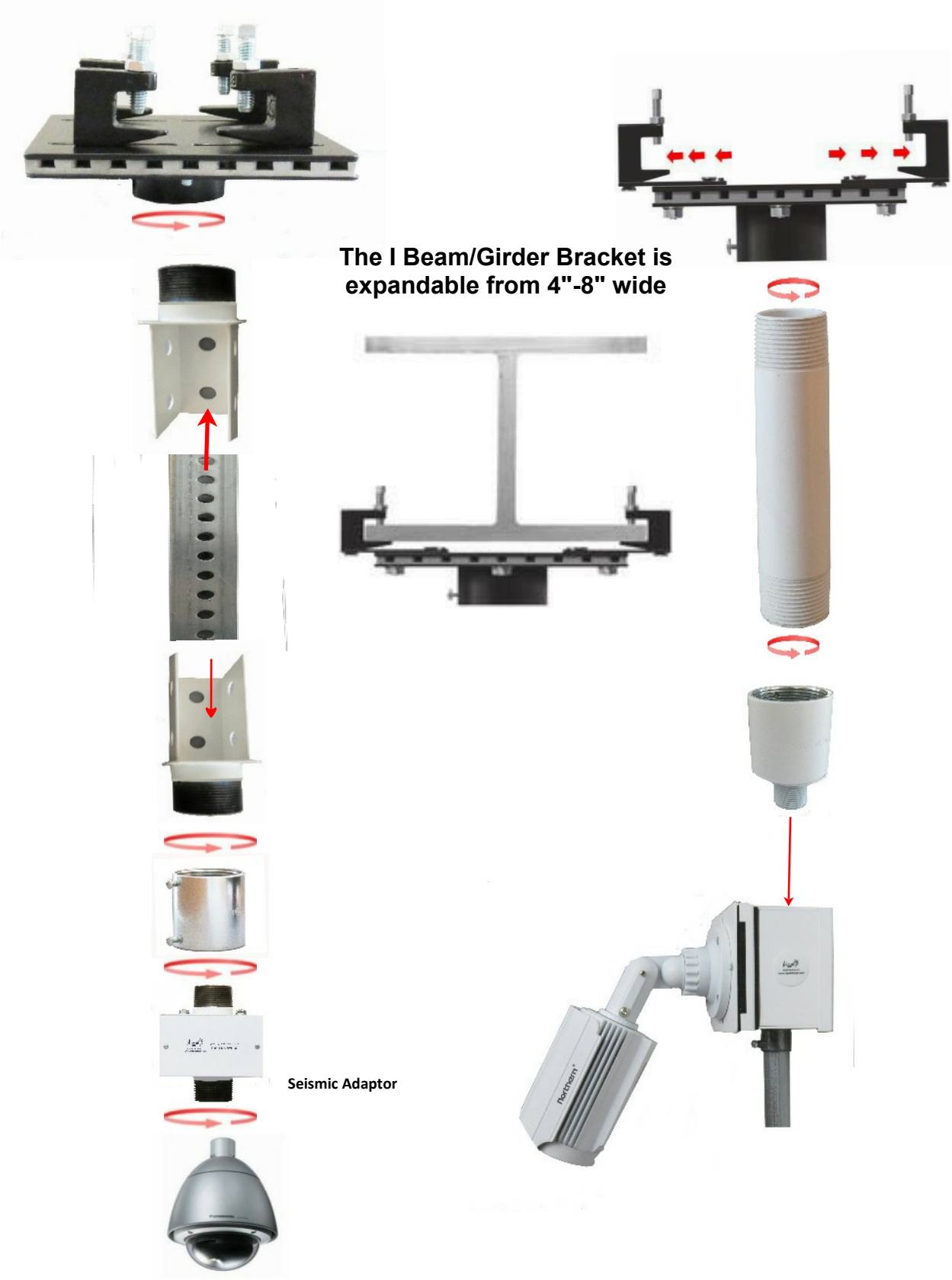


Illustration shows (3) Cameras
attached to the Corner Wall Bracket

See next page to see additional Mounting Attachments that are currently available

THE NB-EXP8IB I BEAM/GIRDER BRACKET IS DESIGNED TO BE USED WITH ALL SECURITY CAMERAS

There are several different ways the I Beam/ Girder Bracket can be used. Shown below are two examples



A DESIGN EXERCISE USING VARIOUS COMPONENTS FROM OUR EXTENSIVE PARTS BIN TO SHOW HOW THESE CAN BE USED ON VARIOUS INSTALLATIONS



Heavy Duty Anti-Vibration Pole Mount Plate Black
Part # NB-HDAVPM \$299.95 List Price
Pole Mounting Plate White Finish
Part # NB-HDAVMP-W \$299.95 List Price



Available in Black Finish Only
IBeam/Girder Bracket
Fits I Beam/Girders 3-8 Inches Wide
Part # NB-EXP81B \$399.95 List Price

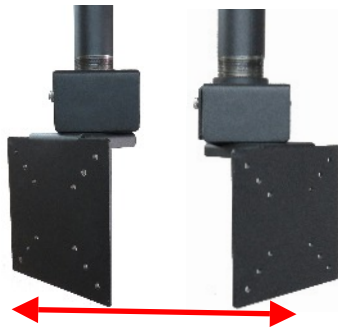
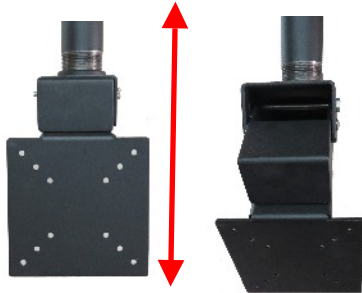


Heavy Duty Anti-Vibration Unistrut Pole Mount Plate
Part # HDAVPM-W-US \$299.95



By using various lengths 1½" dia NPT Threaded Pipe, allows the Camera to be placed exactly where an Installer specifies

**INTRODUCING OUR NEW POLE MOUNT MONITOR BRACKET
WITH THE CONVENIENCE OF MOUNTING A MONITOR ANYWHERE IN A ROOM
WHEN MOUNTING ON A WALL IS NOT AN OPTION**



Up to 50"TV size can be adjusted with the same Horizontal Angle and Vertical Adjustment

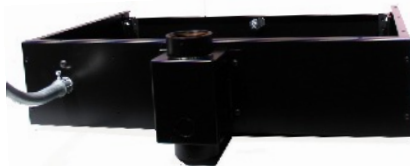
- Monitor or TV has Vertical 0- 50° Adjustment
- Monitor has Horizontal 160° Adjustment
- Weight Capacity Up to 35 Lbs
- Comfortably holds Monitors up to 50" size
- All Cables are hidden inside the Pole directly connecting to the Monitor or TV

NOW THE CONTROL BOX CAN BE INSTALLED ABOVE THE CEILING TILES OUT OF SIGHT

Now have the Control Box and Equipment hidden from view and totally secured from theft. Each Plenum Locking Control Box can integrate with our Pole Mount Monitor seen above with all cables enclosed inside the Down Pipe.



Plenum Control Box with Lid removed and Locking Front Door Open to show Built-In AC Receptacle and spacious interior



Power is brought in inside metal conduit to its Built-In AC Receptacle to comply with Building Code requirements



Using the Ethernet Connection to your Router you can access your controller from anywhere, including various PCs on the Network or use your Cell Phone for Complete Remote Control



Combine the Pole Mount Monitor Bracket with the Plenum Control Box

PRICE LIST APRIL 2017

We reserve the right to make appropriate changes without notice



Camera Arm
Part # NB-CA \$379.95 List



Adjustable Width 3" - 8" I Beam/Girder Bracket
Part # NB-EXP81B \$399.95 List



Pole Mounting Monitor Bracket
Part # NB-MB \$239.95 List



Corner Wall Bracket
Part # NB-CNRWB \$239.95 List



Male Pole Mount Converter to Unistrut Adaptor
Part # NB-TSA \$119.95 List



Heavy Duty Anti-Vibration Pole Mount Plate White
Part # NB-HDAVPM-W \$299.95 List
Pole Mounting Plate Black
Part # NB-HDAVPM \$299.95 List



Heavy Duty Anti-Vibration (Seismic) Adaptor
Part # NB-HDSA \$479.95 List



3 in 1 Adaptor
Part # NB-3IN1 \$159.95 List



Basic 4" X 4" Ceiling Bracket
Part # NB-BCB \$179.95 List



1 1/2" dia. Female-Female 2" Long Converter
Part # NB-2064 \$49.95 List



1 1/2" dia. Female - 3/4" Male Converter
Part # NB-CON-3 \$49.95 List



(2) Pole Mount Brackets for all Mounting Boxes
Part # NB-PBKB-W \$69.95 List



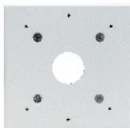
Anti-Vibration (Seismic) Mounting Box # 2 for Bullet, Dome Cameras (Requires Bullet/Dome Camera Mounting Assembly to Complete) as shown below
Part # NB-AVMB-W \$299.95 List



1 1/2" dia. Female - 3/4" Male Converter
Part # NB-CON-2 \$49.95 List



Single Unistrut® Bracket
Part # NB-STB \$125.95 List



Anti-Vibration Camera Mounting Assembly
Part # NB-AVMCA \$159.95 List



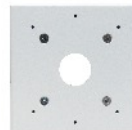
Basic Mounting Box (see page 3)
Part # NB-BMBOX \$199.95 List



4 Position Unistrut® Bracket
Part # NB-4STB \$179.95 List

STOCK ANTI-VIBRATION CAMERA PLATES

- AXIS Model # Q6115-E
Part # NB-Q6115-E
- Bosch Model # VG5-7028 Version 4-7
Part # NB-AVVG5-7028
- Pelco Model # Sarix IMP
Part # NB-AVCPxxx



Basic Mounting Box Camera Plates
Part # NB-BMBC \$139.95 List

STOCK BASIC CAMERA PLATES

- AXIS Model #Q6115-E
Part # NB-Q6115-E
- Bosch Model # VG5-7028 Version 4-7
Part # NB-VG5 7028
- Pelco Model # Sarix IMP
Part # NB-CPSS-xxx

Other Camera Plates Custom* made to order.
Please Contact our Sales Dept

* Custom Charge \$25 per Plate Plus List Price of Plate



Plenum Control Box
Fitted with (2) Racks Lock & (2) keys
Part # NB-MLCAV \$399.95 List

Each Camera Mounting Plate requested has the correct Mounting Hole Pattern with 6.62 Captive Nuts for attaching the specified Camera