

ROCKTRON
TECHNOLOGY FOR GUITARISTS

VOLUME/EXPRESSION PEDAL



HEX

INSTRUCTION MANUAL

- INPUT AND OUTPUT JACKS TO FUNCTION AS A STANDARD VOLUME PEDAL
- ALSO INCLUDES A SEPERATE RTS OUTPUT JACK TO USE AS A MIDI EXPRESSION PEDAL

MAY BE COVERED BY ONE OR MORE OF THE FOLLOWING: U.S. PATENTS
#4538297, 4647876, 4696044, 4745309, 4881047, 4893099, 5124657, 5263091,
5268527, 5319713, 5333201, 5402498 AND 5493617.
OTHER PATENTS PENDING. FOREIGN PATENTS PENDING.



Your HEX™ pedal has been tested and complies with the following Standards and Directives as set forth by the European Union:

Council Directive(s): 89/336/EEC Electromagnetic Compatibility

Standard(s): EN55013, EN50082-1

This means that this product has been designed to meet stringent guidelines on how much RF energy it can emit, and that it should be immune from other sources of interference when properly used. Improper use of this equipment could result in increased RF emissions, which may or may not interfere with other electronic products.

To insure against this possibility, always use good shielded cables for all audio input and output connections. This will help insure compliance with the Directive(s).

For more information about other Rocktron products, please see your local dealer or one of our importers closest to you (listed on the Rocktron website - www.rocktron.com).

Precautions

Read all instructions contained in this manual.

Keep these instructions

Heed all warnings

Follow all instructions.

Do not use this apparatus near water.

Clean with dry cloth

Precautions Continued....

Do not block any ventilation openings (if applicable). Install in accordance with the manufacturer's instructions.

Do not install near any heat sources such as radiators, heat registers, stoves or other apparatus (including amplifiers) that produce heat.

This product is not equipped with a plug or cable. This pedal runs on a 9 Volt Battery, if a 9Volt DC adapter is the used please follow adapter manufacturer's operation instructions.

Only used attachments/accessories specified by the manufacturer.

Do not use this product with any case, stand tripod, bracket or table that is not specified by the manufacturer. Insure that the case, stand, tripod, bracket etc. is properly adjusted and setup (follow all instructions). Extra care and caution should be taken to avoid tip over and injury.

Unplug this apparatus during lightening storms or when unused during long periods of time.

Refer all service to qualified service personnel. Servicing is required when the apparatus has been damaged in any way, such as power supply or plug is damaged, liquid has been spilled or objects have fallen into the apparatus or if the apparatus has been exposed to rain or moisture, does not operate normally or has been dropped.

DO NOT ATTEMPT TO SERVICE THIS EQUIPMENT. QUALIFIED PERSONNEL SHOULD SERVICE THIS EQUIPMENT ONLY. DO NOT MAKE ANY INTERNAL ADJUSTMENTS OR ADDITIONS TO THIS EQUIPMENT AT ANY TIME OR TAMPER WITH INTERNAL ELECTRONIC COMPONENTS AT ANY TIME. FAILURE TO FOLLOW THESE INSTRUCTIONS MAY VOID THE WARRANTY OF THIS EQUIPMENT AS WELL AS CAUSING A SHOCK HAZARD.

OPERATING TEMPERATURE

Do not expose this unit to excessive heat. This unit is designed to operate between 32 F and 104 F (0 C and 40 C). This unit may not function properly under extreme temperatures.

Introduction

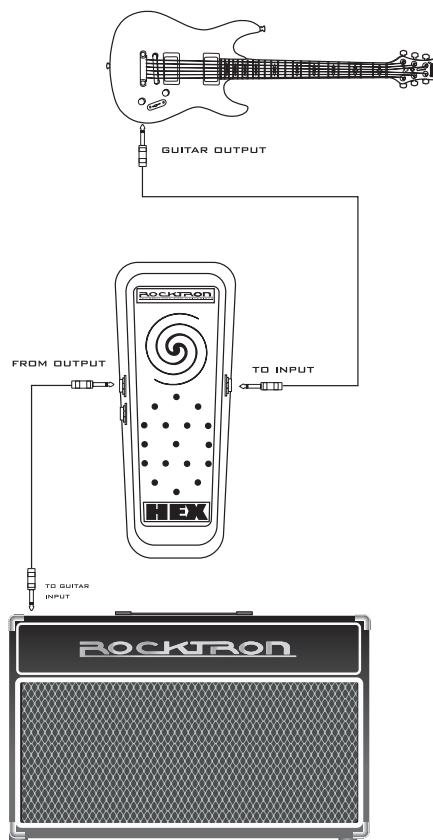
Congratulations on your purchase of the Rocktron HEX Volume/Expression pedal. The HEX is a multi-function pedal that can be used both as a volume pedal and as an expression pedal with a large variety of processors and MIDI controllable equipment.

The design of the pedal allows you to use a simple stereo to stereo cable for expression connection minimizing cable use on stage.

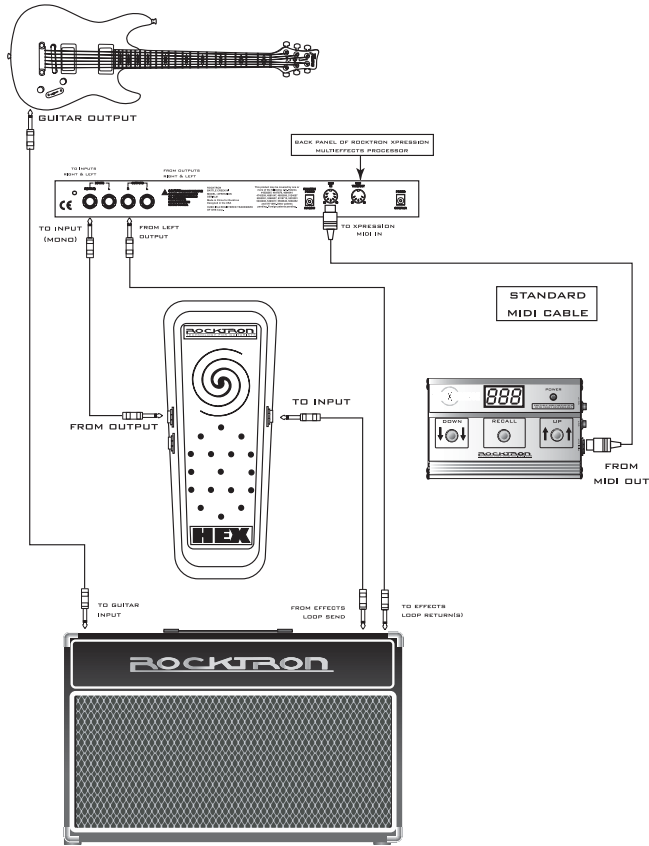
We have incorporated an adjustable rocker tension screw that will allow you to adjust the pedal action for a lighter or heavier “touch”.

Enjoy!!

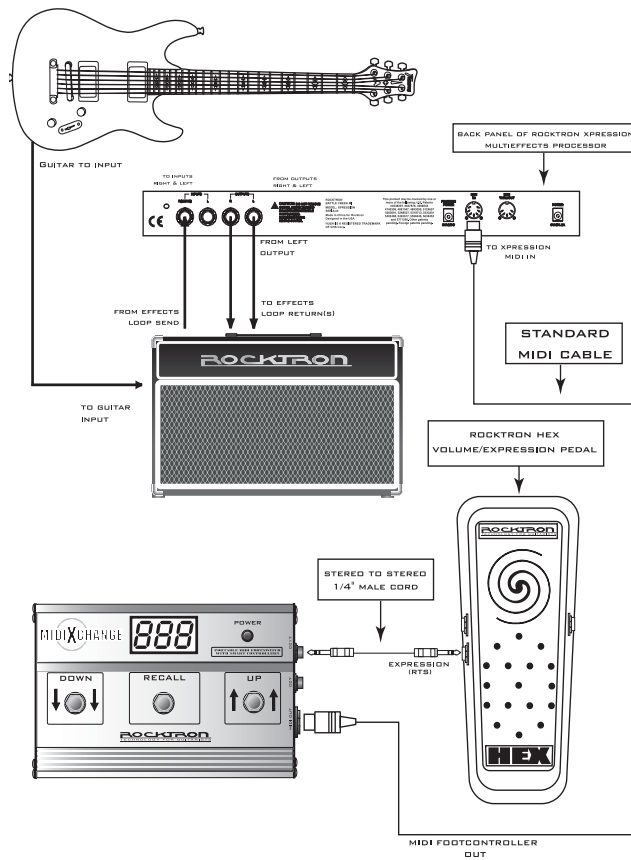
Standard Volume Connection



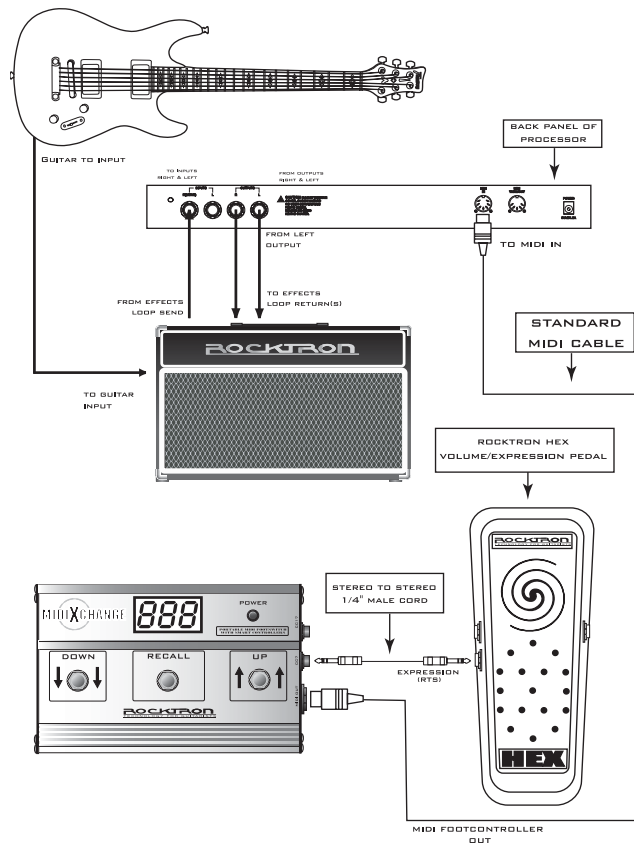
Connection when using the HEX to control the volume of an effects processor:



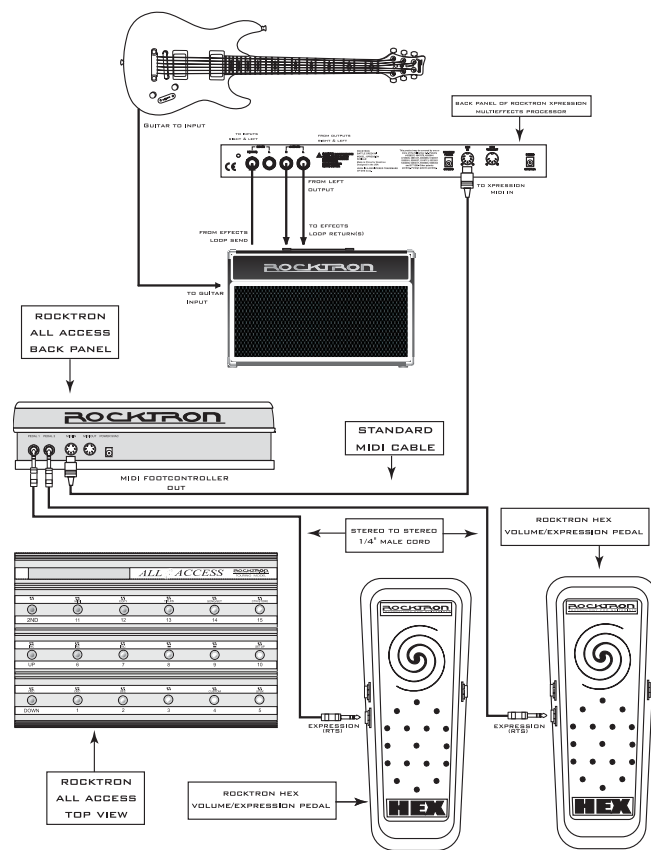
Connection when using the HEX and a Rocktron MIDI XChange to control the volume via MIDI of a Rocktron Processor



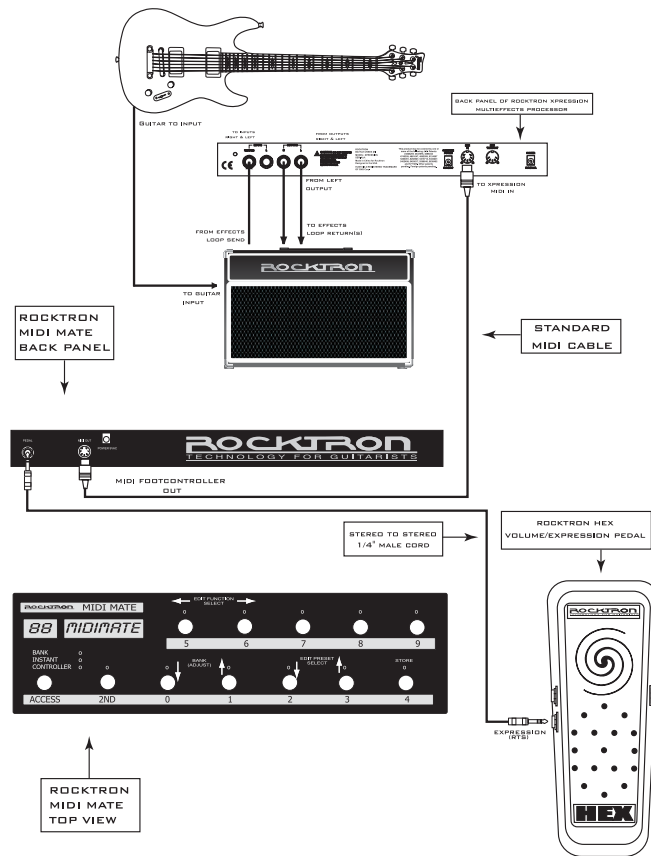
Connection when using the HEX and a Rocktron MIDI XChange to control the volume via MIDI of a Non-Rocktron Processor



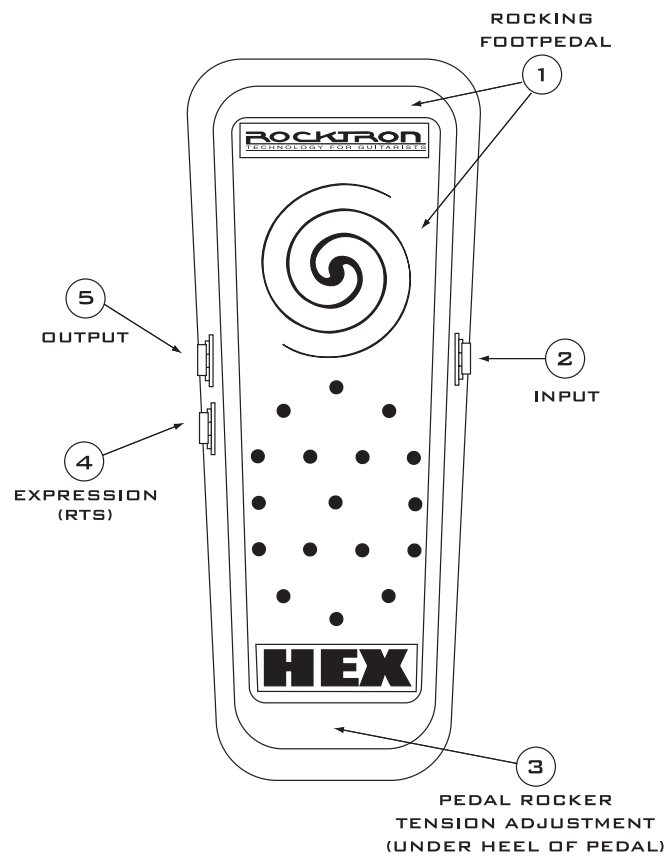
Connection when using one of two HEX pedals as expression pedals with a Rocktron All Access Footcontroller



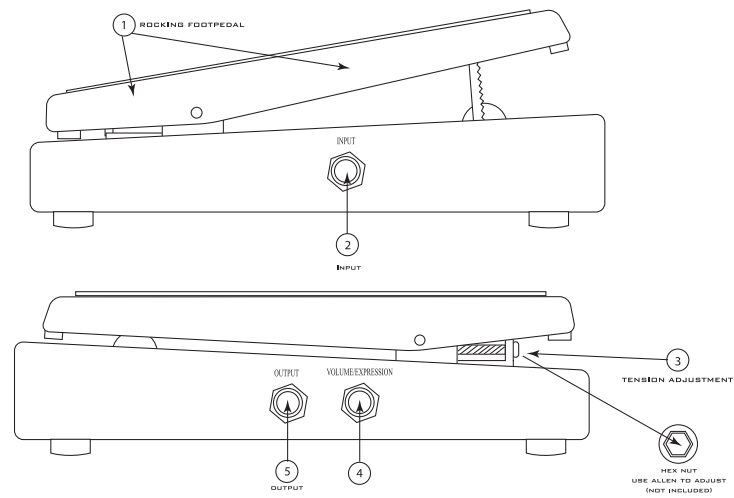
Connection when using the HEX as an expression pedal when using a Rocktron MIDI Mate Footcontroller:



Controls and Descriptions:



Controls and Descriptions:



Function Descriptions

- 1 **Rocker Footpedal** - Place your foot on the rocker footpedal and rock it up and down (toe to heel - heel to toe) to work the “wah” effect.
- 2 **INPUT Jack** - using a standard guitar cable - plug your guitar into this jack when using the pedal as a standard volume controller.
- 3 **PEDAL ROCKER TENSION ADJUSTMENT** - This screw will allow you to adjust the “action” of the pedal to suit your taste with an allen wrench (not included). If you would like a tighter or heavier movement of the pedal using an allen wrench turn the screw clockwise. This will increase the torque and tension on the rocker pedal. If you would like a smoother or softer pedal movement turn the allen screw counter-clockwise. This will loosen the tension on the pedal pivot point.
- 4 **EXPRESSION Jack** - using a 1/4” stereo RTS cable, plug into the expression port in your MIDI footcontroller or your expression port in your MIDI controllable device.
- 5 **OUTPUT Jack** - using a standard guitar cable, plug this output into the next effect in your effect chain or directly into the input of your guitar amplifier (see connection diagrams).

Other Rocktron Products

Rack Gear:

Gainiac (*preamp w/12ax7 tube*)

Chameleon® 2000 (*preamp w/multi-effects*)

RepliTone MP(*modelling preamp w/multi-effects*)

Xpression (*multi-effects processor*)

Blue Thunder (*bass preamp w/multi-effects*)

Voodoo Valve® (*preamp w/12ax7 tube and multi-effects*)

Prophesy (*our top of the line preamp with multi-effects*)

HUSH® Super C (*guitar noise silencing system*)

Vendetta VP4 Preamp (*All Tube 4-Channel Guitar preamp - 2 Rack Space*)

Velocity® 100 (*2x50W Stereo Power Amp for Guitar*)

Stomp Boxes:

Rampage Distortion, Tsunami Chorus, Austin Gold Overdrive,

Vertigo Vibe Rotating Vibe Pedal, HUSH® The Pedal,

Sonic Glory Overdrive, Short Timer Digital Delay,

Big Crush Compressor, Deep Blue Chorus

Silver Dragon Tube Distortion Pedal,

Metal Planet Distortion

Banshee Talk Box

Black Cat Moan Wah Wah Pedal

Foot Controllers:

MIDI Mate (*Midi Foot Controller*) **MIDI XChange**(*MIDI Footcontroller*)

All Access® (*Midi Foot Controller*)

RMM900(*7-pin Din MIDI Cable*) **RM4** (*MIDI Controller for Vendetta amps*)

RFS1 and RFS2 (*Single and Double Latching Footswitches for Rampage Amps*)

Electric Guitar - Acoustic Guitar and Bass Amplifiers:

Vendetta Head(*100 W Head 4-Channels All Tube - MIDI Switchable*)

Vendetta Combo (*100W 2x12 Combo Celestion 90s all Tube4-Channel MIDI Switchable*)

R80DSP (*80W 1x12 Amp w/Digital Effects*)

RT80 (*80W 1x12 Amp w/Reverb & Built-in Tuner*)

R120DSP (*120W 2x10 Amp w/Digital Effects*)

RT122C (*120W 2x12 Amp w/Stereo Chorus, Reverb & Chromatic Tuner*)

R50DSP (*50 Watt 2x8" Guitar Amp w/Digital Effects*)

R50C (*50 Watt 2x8" Guitar Amp w/Reverb & Chorus*)

R20 (*20 Watt 1x8" Amp w/Reverb*) **R10** (*10 Watt 1x6.5"*)

ACOUSTIC (*60 Watt Acoustic Amp with Chorus & Reverb*)

RA50DSP (*50W Acoustic Amp w/Digital Effects - Wedge Shape*)

RA30DSP (*30W Acoustic Amp w/Digital Effects - Wedge Shape*)

RB20 (*Bass Amp 20W with 8" Speaker*) **RB30** (*Bass Amp 30W with 10" Speaker*)

RB60 (*Bass Amp 60W with 12" Speaker*)

RB100 (*Bass Amp 100W with 15" Speaker*)

ROCKTRON
TECHNOLOGY FOR GUITARISTS



VOLUME/EXPRESSION PEDAL

Rocktron - A Division of GHS Corporation
2813 Wilber Ave
Battle Creek MI 49015
USA

Rocktron Phone: 1-(269)-968-3351
Email: info@rocktron.com

www.rocktron.com

2003-0001
Rev. 02/01/03