



SPECIFICATIONS SM129z

FEATURES

- Compact 2-way 12-inch stage monitor / PA
- Dual purpose loudspeaker: stage monitor and PA
- Two mounting points accept third party external stand adaptor for PA use
- Rubber feet included for floor mounting
- Passive crossover and EQ for economical single amplifier operation
- Dual Neutrik NL4 connectors on each side for input and loop through connection
- Two integral handles strategically placed for easy transport
- Foam-backed steel grille for protection from physical damage and dust

DESCRIPTION

The SM129z is a compact, professional loudspeaker designed for dual-purpose stage monitor and PA use. Its 12-inch low frequency transducer provides strong LF performance while keeping a modest enclosure size for situations with limited space. This is complemented by a 1-inch exit Neodymium compression driver. The smooth HF response and high output capability cuts through stage sound for quality monitoring and provides good projection for PA use. The low profile and compact size are ideal for situations where small physical size is needed, without sacrificing professional performance. Integral mounting points accept a third party external stand adaptor for pole mounting. Portable usage is enhanced by the heavy-duty enclosure construction, foam-backed steel grille, and integral handles. The connector panels on each side have dual Neutrik NL4 jacks for reliable input and loop through connections.

APPLICATION

Applications include:

- Corporate Events
- Theatres
- Live Music clubs
- Band PA and monitor
- Houses of Worship

PERFORMANCE

Frequency Response (Hz)

±3 dB	80 Hz to 19 kHz
-10 dB	65 Hz

Axial Sensitivity (dB SPL, 1 Watt @ 1 m)

97

Nominal Impedance (ohms)

8

Power Handling (watts, continuous)

450



Recommended High-Pass Frequency

24 dB/octave 65 Hz

Calculated SPL Limit (dB @ 1 m)

Peak	129
Long Term	123

Nominal Dispersion (degrees @ -6 dB)

Horizontal	90
Vertical	45

PHYSICAL

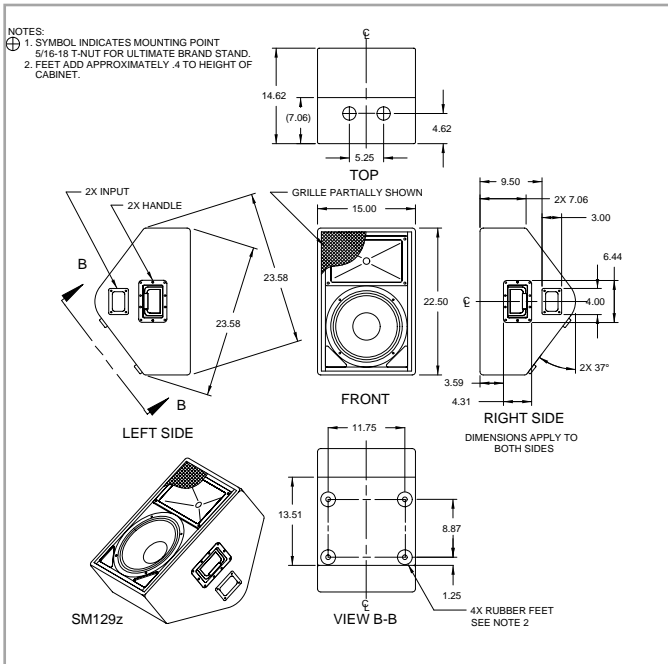
LF Subsection	1x 12-in, vented	
HF Subsection	1x 1-in exit compression driver on constant directivity horn	
Configuration	2-way, full range stage monitor	
Powering Mode	Passive LF/HF crossover	
Enclosure Shape	Wedge stage monitor	
Enclosure Materials	Exterior grade Baltic birch	
Finish	Wear-resistant textured black paint	
Connectors	4x Neutrik NL4 Speakon (2 per side)	
Mounting Hardware	(2) 5/16"-18 threaded mounting points on top to accept a third party external stand adaptor	
Grille	Powder coated perforated steel, foam backed	
Dimensions	inches	millimeters
	Height	19.2 488
	Width	15.0 381
	Depth	22.2 564
	Floor Angle	37°
	Note:	The supplied feet add approx. 0.4-in/10mm to the enclosure height
Weights	pounds	kilograms
	Net Weight	43 19.6
	Shipping Weight	50 22.7





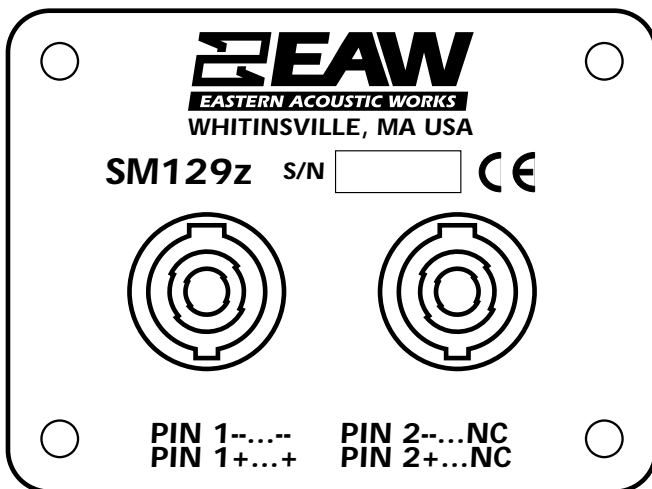
SPECIFICATIONS SM129z

DIMENSIONAL DRAWING



Manufacturing tolerances are +/- 0.13 and +/- 1°

INPUT PANEL



A & E SPECIFICATIONS

The 2-way full-range loudspeaker shall incorporate a 12-in LF woofer and a 1-in exit HF compression driver.

The LF woofer shall be mounted in a vented enclosure tuned for optimum low frequency response. The HF compression driver shall be loaded on a constant directivity horn with a nominal beamwidth of 90° (h) x 45° (v). An internal passive filter network shall provide fourth order acoustical crossover and system equalization.

System frequency response shall vary no more than ± 3 dB from 80 Hz to 19 kHz measured on axis. The loudspeaker shall produce a sound pressure level (SPL) of 97 dB SPL on axis at 1 meter with a power input of 1 watt, and shall be capable of producing a peak output of 129 dB SPL on axis at 1 meter. The loudspeaker shall handle 450 watts of amplifier power (AES Standard) and shall have a nominal impedance of 8 ohms.

The loudspeaker enclosure shall have rubber footpads on one side. Its baffle shall be angled up 37°. It shall be constructed of exterior grade Baltic birch plywood and shall employ extensive internal bracing. It shall be finished in wear resistant textured black paint. Input connectors shall be four Neutrik NL4 Speakon (two per side). Two 5/16"-18 threaded mounting points shall be provided on top of the enclosure spaced to accept a third party external stand mount adaptor. The front of the loudspeaker shall be covered with a powder coated perforated steel grille backed with open cell foam to protect against dust.

The 2-way full-range loudspeaker shall be the EAW model SM129z.

