

AF CB CP CS CV HD HS R **SL** WE XE XL

SPECIFICATIONS (See notes 1 and 2)

Loudspeaker Type: 3-way, Electronically controlled, full-range

Operating Range: 95 Hz - 18 kHz, 120 Hz - 18 kHz (+/-3dB)

Max Input (Passive):

200W continuous, 500W program

40 volts RMS, 89 volts momentary peak

Recommended Power Amp: 420W to 600W @ 8 Ohms

Max Inputs (Biamp):

LF: (Same as for Passive mode)

Recommended LF Power Amp: (Same as for Passive mode)

MF/HF: 80W continuous, 200W program

25 volts RMS, 57 volts momentary peak

Recommended MF/HF Power Amp: 170W to 240W @ 8 Ohms

Sensitivity 1W/1m: 107 dB SPL (100 Hz - 16 kHz 1/3 octave bands)

108 dB SPL (250 Hz - 4 kHz speech range)

Maximum Output: 130 dB SPL / 137 dB SPL (peak)

Nominal Impedance (passive): 8 Ohms

Min Impedance: 5.5 Ohms @ 600 Hz

Nominal Impedances (Biamp): LF: 8 Ohms, HF: 8 Ohms

Nominal -6dB Beamwidth:

65° H (+16° / -19°, 1 kHz - 16 kHz)

50° V (+43° / -13°, 1 kHz - 16 kHz)

Axial Q / DI: 20.8 / 13.2, 1 kHz - 16 kHz

Crossover Frequencies: 800 Hz / 3 kHz

Recommended Signal Processing:

800 Hz crossover (for biamp)

80 Hz high pass filter

Drivers (Ferrofluid-cooled):

LF (2) 8" dual-spider, cast frame

MF (1) M200 2", non-metallic diaphragm

HF (1) VHF100 1" exit, non-metallic diaphragm

Driver Protection: PowerSense™ DDP

Input Connection: (2) Neutrik NL4MP

(2) dual banana jacks

Controls: Passive / Biamp switch

Enclosure: 13-ply 18 mm Baltic birch, Polane painted (see options)

Enclosure Hardware:

(1) steel, recessed bar handle

Mounting / Rigging Provisions:

(8) 3/8-16 rigging points, W.L.L. 300 lb. vertical pull each

(3) Pull-back points, W.L.L. 60 lb. each

(2) 5/16-18 inserts for stand adapter *

(4) 5/16-18 inserts for mounting bracket **

Grille: 16 gauge perforated steel (see options)

Required Accessories: Electronic speaker controller

Supplied Accessories: (4) Rubber feet with mounting screws

Optional Accessories: EYBLTKIT: (4) forged 3/8-16 eyebolts

SC21.1: analog speaker controller

DSC42: digital speaker controller

Dimensions: Height: 25.9 in. / 659 mm

Width (front): 14.4 in. / 365 mm

Width (rear): 8.9 in. / 227 mm

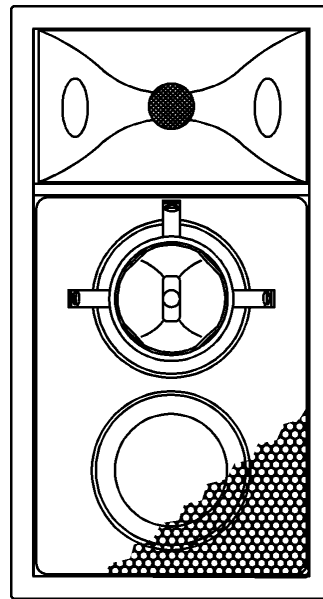
Depth: 14.6 in. / 372 mm

Weight: 70 lb. / 31.8 kg

Shipping Weight: 87 lb. / 39.5 kg

1. Sensitivity: Free field pink noise measurement at 20 ft / 6.1 m at 25% power; extrapolated to 1 meter and an input of 2.83 volts RMS.

2. Watts: All wattage figures are calculated using the rated nominal impedance.



25.9 in.
659 mm

APPLICATIONS:

- Arenas / Sports Venues
- Houses of Worship
- Performing Arts Centers
- Theaters
- Dance Clubs
- Portable SR Systems

DESCRIPTION

The Community Solutions SLS920 loudspeaker is a high output, high sensitivity, horn-loaded, three-way, full-range loudspeaker system with an integral one-piece fiberglass baffle of Wavefront Coherent™ design. It provides high intelligibility voice projection and musical reinforcement in a very compact package. Engineered for use in portable or permanent installations, the loudspeaker enclosure is constructed of void-free, heavily braced Baltic plywood with integral steel bracing connected to threaded 3/8 in. nuts which provide robust suspension points for vertical or horizontal mounting. The system may be used in passive mode or switched for bi-amplification. Available in black or white with white grille cover, with or without handles. Five year limited warranty.

Use with Community SBS Series loudspeakers and the SC21 system controller or the DSC42 digital system controller.

OPTIONS:

SLS920 = Black paint with handles, no grille cloth.

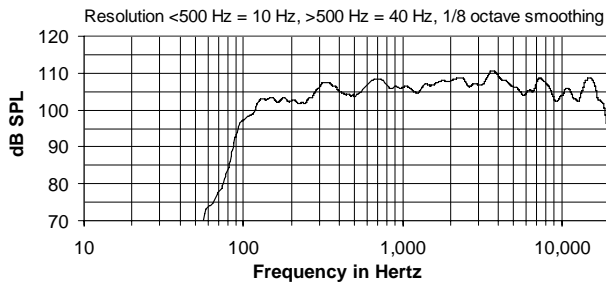
SLS920WHT = White paint, no handles, white grille cloth

*e.g. Ultimate Support BMB200K

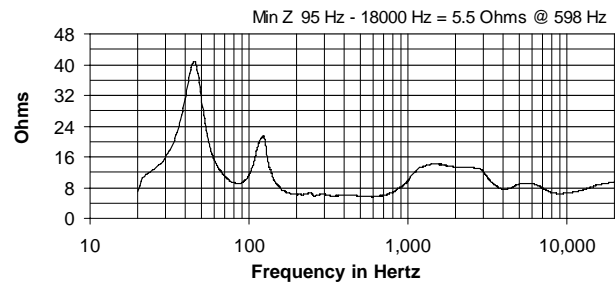
**e.g. Omnimount 300 Series

AF CB CP CS CV HD HS R **SL** WE XE XL

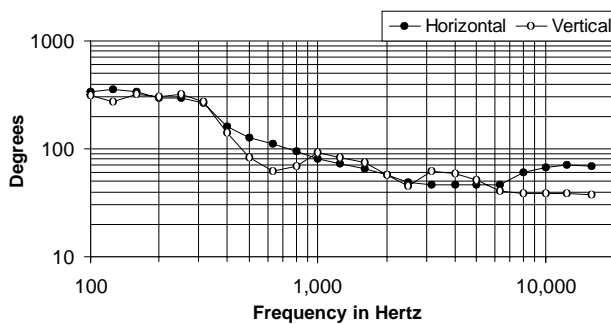
FREQUENCY RESPONSE (WITH CONTROLLER)



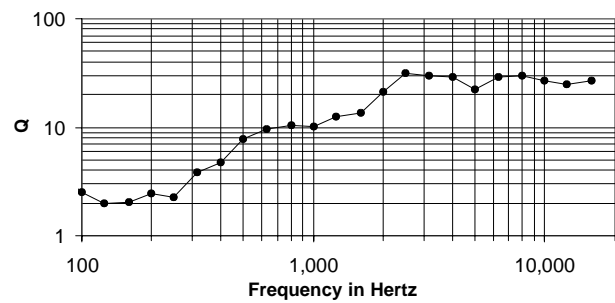
IMPEDANCE



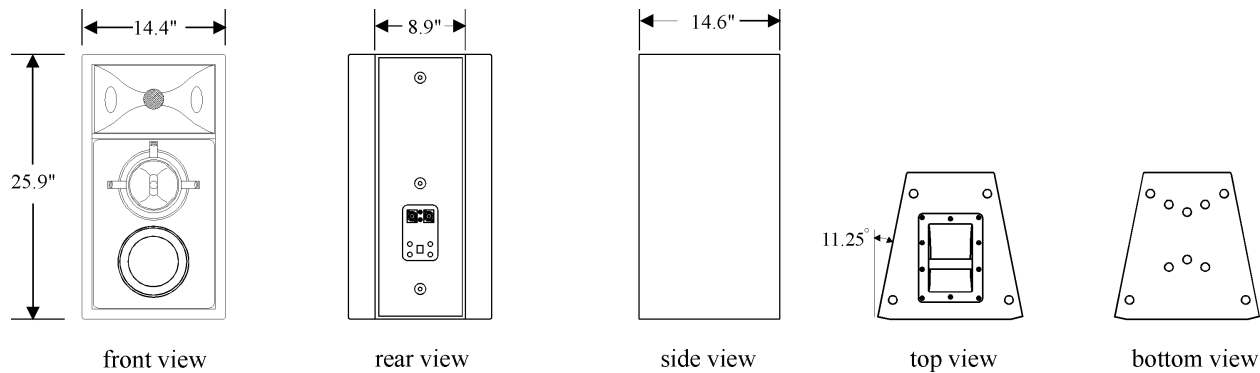
BEAMWIDTH



AXIAL Q



DIMENSIONS



ARCHITECTS' AND ENGINEERS' SPECIFICATIONS

The loudspeaker system shall be a horn-loaded, three-way, full-range bass reflex trapezoidal design with two 8 in. dual-spider Ferrofluid-cooled woofers, one 2 in. exit Ferrofluid-cooled midrange compression driver with a non-metallic diaphragm and one 1 in. exit HF driver with a non-metallic diaphragm mounted on a fiberglass waveguide. Drivers shall be connected to an integral crossover with crossover frequencies of 800 Hz and 3 kHz and integral over-current protection circuitry using high positive current coefficient resistors. There shall be two Neutrik NL4MP and two dual banana input connectors. The loudspeaker enclosure shall be well-braced 18 mm 13-ply Baltic birch with a 16 gauge perforated steel grille and finished with black [white] paint. There shall be eight 3/8-16 integral threaded mounting points connected to internal steel bracing. The system shall have an amplitude response of 120 Hz to 18 kHz (+/- 3 dB), input capability of 40V RMS, 107 dB sensitivity at one meter and 2.37 V / 8 ohms nominal impedance. The nominal dispersion shall be 80°H x 50° V from 1 kHz to 16 kHz. The loudspeaker shall be 25.9 in. (659 mm) H x 14.4 in. (365 mm) W (front) x 8.9 in. (227 mm) W (rear) x 14.6 in. (372 mm) D and weigh 70 lbs. (31.9 kg).

Specifications subject to change without notice.

SLS920 Page 2 of 2