



XP502

PROFESSIONAL LOUDSPEAKERS TWO-WAY, BI-AMPABLE MULTI-ANGLE MONITOR WITH 90° X 40° HF HORN

SPECIFICATIONS (See notes 1 and 2)

Loudspeaker Type: 2-way, full-range, bass ported
Operating Range: 70 Hz - 18 kHz
90 Hz - 15 kHz (+/- 6 dB)

Max Input Ratings:

400W continuous, 1000W Program
57 volts RMS, 126 volts momentary peak

Recommended Power Amplifier:

For maximum SPL: 800W to 1200W @ 8 Ohms

Sensitivity 1W/1m:

98 dB SPL (80 Hz - 16 kHz 1/3 octave bands)
99 dB SPL (250 Hz - 4 kHz speech range)

Maximum Inputs (biamp):

LF (same as for passive mode)
HF: 50W continuous, 125W PGM @ 4 Ohms.

Maximum Output: 124 dB SPL / 131 dB SPL (peak)

Nominal Impedance: 8 Ohms

Min Impedance: 3.6 Ohms @ 11.6 kHz

Nominal -6dB Beamwidth:

90° H (+9° / -30° (2 kHz - 12.5 kHz)
40° V (+17° / -6° (2 kHz - 12.5 kHz)

Axial Q / DI: 18.9 / 12.8, 2 kHz - 12.5 kHz

Crossover Frequency: 2 kHz

Recommended Signal Processing:

50 Hz high pass filter

Drivers: LF (1) 12" woofer

HF (1) 1" exit, non-metallic diaphragm, Ferrofluid-cooled

Driver Protection: IntelliSense™

Input Connection: (2) Locking connectors
(compatible with Speakon™ NL4)
(2) 1/4" jacks

Controls: HF presence switch
Bi-amp/Full-range switch

Enclosure: Black carpeted 3/4" Luaun-core plywood

Enclosure Hardware: (1) Steel spring handle
(8) Interlocking corner protectors

Mounting / Rigging Provisions: (1) 1-3/8" metal stand socket

Grille: 16 gauge perforated steel, black powder coated

Required Accessories: None

Supplied Accessories: None

Optional Accessories: None

Dimensions:

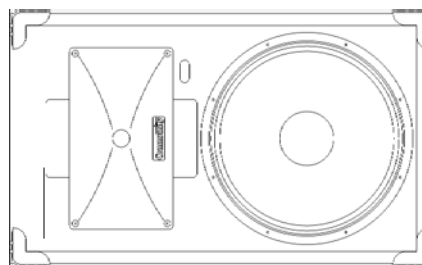
Height: 14.9" / 378 mm
Width (front): 24.4" / 620 mm
Width (rear): 24.4" / 620 mm
Depth: 15.5" / 394 mm

Weight: 37 lb. / 16.8 kg

Shipping Weight: 44 lb. / 20 kg

1. Sensitivity: Free field pink noise measurement at 40 ft / 12.2 m at 50% power; extrapolated to 1 meter and an input voltage of 2.83 volts RMS.

2. Watts: All wattage figures are calculated using the rated nominal impedance.



APPLICATIONS:

- Sound Reinforcement/Portable PA
- Portable PA
- Houses of Worship
- Clubs/DJ
- Bands
- Sport Facilities & Health Clubs

FEATURES:

- Multiangle
- 1" Exit Proprietary, Ferrofluid-cooled UC1 HF Driver, Non-metallic Diaphragm
- Three Color PowerMeter™ LEDs
- IntelliSense™ Three Stage Solid State Protection Circuitry with Front/Rear Indicators
- Black Carpeted Exterior
- Steel Spring Handle and Input Panel
- Switchable High Frequency Boost and Cut Switch
- Full-range/Biamp Operation

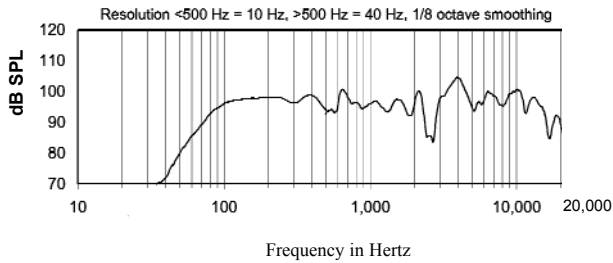
DESCRIPTION

The XP502 is a small and versatile two-way, bi-ampable, multi-angle loudspeaker system. The HF horn is rotatable for narrower horizontal coverage or for horizontal mounting. The XP502 features an improved IntelliSense™ circuitry, which operates in conjunction with PowerMeter™ LED indicators. Found on both front and rear panels, the LEDs flash green to indicate signal presence, yellow to warn that the loudspeaker is entering its first stages of protection and red to show that full protection has been activated. Within protection mode, IntelliSense automatically attenuates speaker levels to within a safe operating range. Once volume has been reduced, the circuit resets itself, restoring full power and operation to the speaker. The black carpeted enclosure and perforated steel grille present an attractive package. Five year warranty.

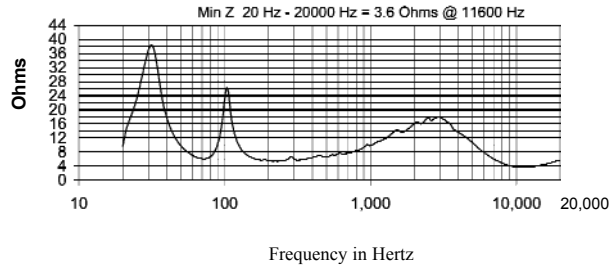
XP502 Page 1 of 2

COMMUNITY PROFESSIONAL LOUDSPEAKERS
333 East 5th Street, Chester, PA USA 19013-4511 TEL (610) 876-3400 FAX (610) 874-0190
www.loudspeakers.net

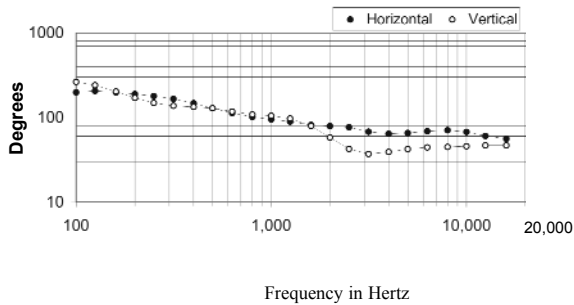
Frequency Response



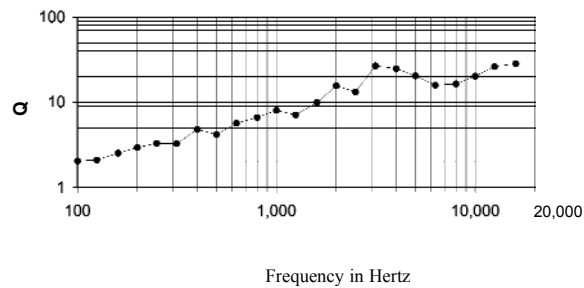
Impedance



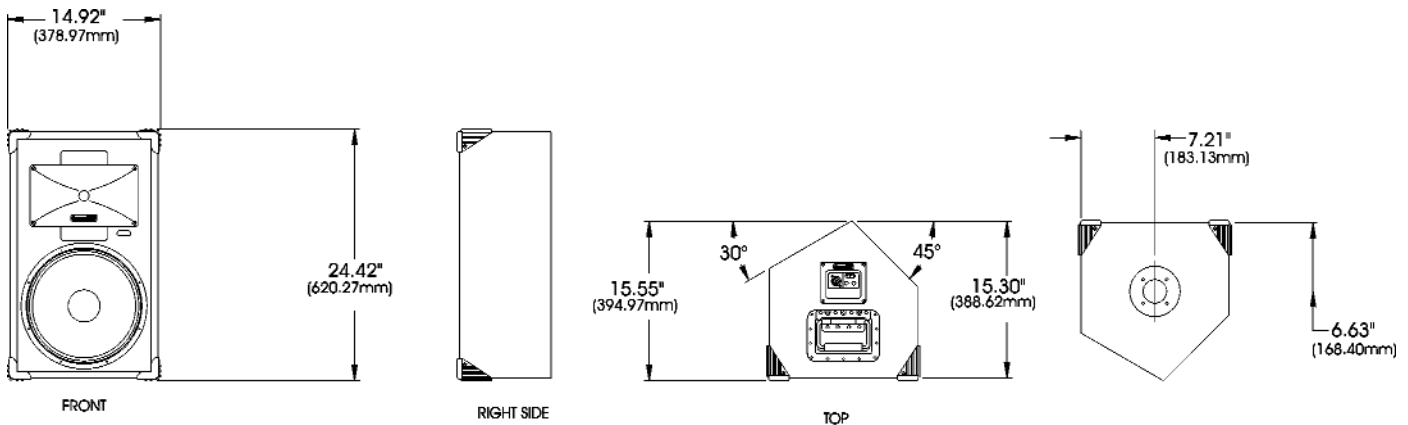
Beamwidth



Axial Q



DIMENSIONS



ARCHITECTS AND ENGINEERS SPECIFICATIONS

The loudspeaker system shall be a two-way, bi-ampable, full-range bass reflex design with angled back panels allowing 30° and 45° front slant when used as a PA monitor. The loudspeaker system shall have one 12" woofer and one 1" exit HF driver with a non-metallic diaphragm mounted to a 90°H x 40°V rotatable molded horn. Drivers shall be connected to an integral crossover with a crossover frequency of 2 kHz and integral three stage protection circuitry. There shall be two locking connectors and two 1/4" phone jack connectors. The loudspeaker enclosure shall be black carpeted 3/4" plywood with a 16 gauge perforated steel grille. The system shall have an amplitude response of 90 Hz to 15 kHz (+/- 6 dB), input capability of 57V RMS, 98 dB sensitivity at one meter and 2.83V / 8 ohms nominal impedance. The nominal dispersion shall be 90°H x 40°V from 2 kHz to 12.5 kHz. The loudspeaker shall be 24.4" (620 mm) W x 14.9" (378 mm) H x 15.6" (395 mm)D and weigh 37 lbs (16.8 kg).