

Converter Catalog 2016



Because it matters.®

AJA
VIDEO SYSTEMS

Contents

Introduction

- 04 **AJA Mini-Matrix** Converter Information Software
- 04 **Mini-Config** Visual Configuration and Control Software

HDMI Converters

- 05 **HA5** HDMI to HD-SDI/SD-SDI Mini-Converter with Embedded Audio
- 05 **HA5-Plus** HDMI to 3G-SDI Mini-Converter with Embedded Audio
- 06 **HA5-4K** 4K/UltraHD HDMI to 4K/UltraHD SDI Mini-Converter
- 06 **HA5-Fiber** HDMI to 3G-SDI over Fiber Video and Audio Mini-Converter - **NEW!**
- 07 **Hi5** HD/SD-SDI to HDMI Mini-Converter with Embedded Audio
- 07 **Hi5-Plus** 3G-SDI to HDMI Mini-Converter with Embedded Audio
- 08 **Hi5-3G** 3G-SDI/Dual-link SDI to HDMI 1.3a Video and Audio Mini-Converter
- 08 **Hi5-3D** Dual HD-SDI Multiplexer to HDMI 1.4a and SDI Video and Audio Mini-Converter
- 09 **Hi5-4K** 4K/UltraHD-SDI to HDMI Mini-Converter
- 09 **Hi5-4K-Plus** 4K/UltraHD-SDI to full HDMI 2.0 Mini-Converter - **NEW!**
- 10 **Hi5-Fiber** 3G-SDI over Fiber to HDMI Video and Audio Mini-Converter

Scaling Converters

- 11 **4K2HD** 4K/UltraHD to HD Down-Converter
- 11 **HD10MD4** HD/SD-SDI to SDI/Analog Down-Converter
- 12 **HDP3** 3G-SDI to DVI-D and Audio Converter - **NEW!**
- 12 **UDC** Up, Down, Cross-Converter

Region of Interest Scan Converters

- 13 **ROI-SDI** 3G-SDI to HDMI/3G-SDI Scan Converter with Region of Interest - **NEW!**
- 13 **ROI-DVI** DVI to SDI Scan Converter with Region of Interest
- 14 **ROI-HDMI** HDMI to SDI Scan Converter with Region of Interest
- 14 **ROI-DP** DisplayPort to SDI Scan Converter with Region of Interest

IP Mini Converters

- 15 **IPR-1G-SDI** JPEG 2000 IP Video and Audio to 3G-SDI Converter - **NEW!**
- 15 **IPR-1G-HDMI** JPEG 2000 IP Video and Audio to HDMI Converter - **NEW!**

Mini-Connect

- 16 **Mini-Connect** Control AJA ROI Mini-Converters via Ethernet

Analog Converters

- 17 **HD10A-Plus** HD Analog to HD-SDI Converter
- 17 **HD10AVA** HD/SD Analog Composite or Component Video and 4-Channel Analog Audio to SD/HD-SDI with Embedded Audio
- 18 **HD10C2** HD-SDI and SDI Digital
- 18 **HD10CEA** HD/SD-SDI to Analog Audio/Video
- 19 **V2Analog** HD/SD-SDI to Analog Video Converter
- 19 **V2Digital** Analog Video to HD/SD-SDI Converter

Color Management

- 20 **LUT-box** In-line Color Transform

HDBaseT

- 21 **RovoRx-SDI** HDBaseT to 6G/3G-SDI and HDMI Converter with POH, Genlock - **NEW!**
- 21 **RovoRx-HDMI** HDBaseT to HDMI Converter with PoH

- 22 **HB-T-HDMI** HDMI to HDBaseT Mini-Converter
- 22 **HB-R-HDMI** HDBaseT to HDMI Mini-Converter
- 23 **HB-R-SDI** HDBaseT to 3G-SDI Mini-Converter
- 23 **HB-T-SDI** 3G-SDI to HDBaseT Mini-Converter

Optical Fiber Converters

- 24 **FiDO** Introduction
- 25 **FiDO-4R** Quad Channel LC Optical Fiber to 3G-SDI
- 25 **FiDO-4T** Quad Channel 3G-SDI to LC Optical Fiber
- 25 **FiDO-4R-ST** Quad Channel ST Optical Fiber to 3G-SDI
- 25 **FiDO-4T-ST** Quad Channel 3G-SDI to ST Optical Fiber
- 26 **FiDO-2R** Dual Channel LC Fiber to SDI24
- 26 **FiDO-2T** Dual Channel SDI to LC Fiber
- 26 **FiDO-R** Single Channel LC Fiber to SDI with Dual SDI Outputs
- 26 **FiDO-T** Single Channel SDI to LC Fiber with Looping SDI Output
- 27 **FiDO-R-SC** Single Channel SC Fiber to SDI with Dual SDI Outputs
- 27 **FiDO-T-SC** Single Channel SDI to SC Fiber with SDI Output Loop
- 27 **FiDO-R-ST** Single Channel ST Fiber to SDI with Dual SDI Outputs
- 27 **FiDO-T-ST** Single Channel SDI to ST Fiber with Looping SDI Out
- 28 **FiDO-TR** SDI/LC Fiber Transceiver
- 28 **FiDO-4T-X** Quad Channel SDI to LC Fiber Converter for CWDM
- 28 **FiDO-2T-X** Dual Channel SDI to LC Fiber Converter for CWDM
- 28 **CWDM SFP Modules** Dual Channel LC Fiber Transmitters

openGear®

- 29 **OG-3-FR** 2RU 20 Slot Frame with one Power Supply
- 29 **OG-3G-AM** 3G-SDI 8-Ch AES Embedder/Disembedder - **NEW!**
- 30 **OG-2x4-SDI-DA** 2x4 3G-SDI Reclocking DA - **NEW!**
- 30 **OG-1x9-SDI-DA** 1x9 3G/HD/SD Reclocking DA
- 31 **OG-FIBER-2T** 2-Channel SDI to LC Fiber
- 31 **OG-FIBER-2R** 2-Channel LC Fiber to SDI
- 32 **OG-FIBER-T** 1-Channel SDI to Fiber
- 32 **OG-FIBER-R** 1-Channel Fiber to SDI
- 33 **OG-FIBER-TR** SDI/Fiber Transceiver

Infrastructure

- 34 **3G-AM** 3G-SDI 8-Channel AES Embedder/Disembedder
- 34 **3G-AMA** 3G-SDI Analog Audio Embedder/Disembedder
- 35 **3GDA** 1x6 3G/HD/SD Reclocking Distribution Amplifier
- 35 **3GM** 3G/1.5G HD-SDI Multiplexer
- 36 **ADA4** 4-Channel Bidirectional Audio A/D and D/A Converter
- 36 **C10DA** Analog Video 1x6 Distribution Amplifier - **NEW!**
- 37 **D5DA** 1x4 SD-SDI Distribution Amplifier, Multi-Format
- 37 **GEN10** HD/SD Sync Generator
- 38 **HD5DA** 1x4 HD/SD-SDI Distribution Amplifier/Repeater
- 38 **HD10DA** 1x6 HD/SD-SDI Distribution Amplifier

SD Converters

- 39 **D4E** SD-SDI to Composite Analog Mini-Converter
- 39 **D5PSW** SD-SDI Protection Switch
- 40 **D10CEA** SD-SDI to Analog Audio and Video Mini-Converter, 10-bit

Accessories

- 41 **CMP** Converter Mounting Plate
- 41 **DRM** Mini-Converter Rackmount Frame
- 41 **DWP-U-R1** Universal Power Supply
- 42 **PWR-CABLE** P-TAP cable
- 42 **RMB / RMB-10** Rackmount Brackets for D and H Series Converter

Introduction

Complete Range of Standalone Converters

From production to post and live events, AJA Converters offer the most complete range of compact, standalone conversion and infrastructure solutions, designed to the highest standards in reliability and quality. Our converters cover a full range of Broadcast IP, 4K, HD and SD capabilities to meet your needs.



5 LEGENDARY
YEAR
WARRANTY

AJA Quality – Guaranteed

AJA Converters have earned a reputation for the highest quality and best levels of reliability. Built to the exacting standards of all AJA hardware, AJA Converters are backed by our world class support network, 5 year international warranty and AJA's advanced replacement policy.

Compact and Portable

AJA Mini-Converters are small enough to fit behind a monitor, in the back of a rack or directly on a camera rig. The locking power connector won't accidentally pull loose and an optional P-TAP power cable allows Mini-Converters that support 5-20v power to be battery operated in remote locations.



Introduction

AJA Mini-Matrix

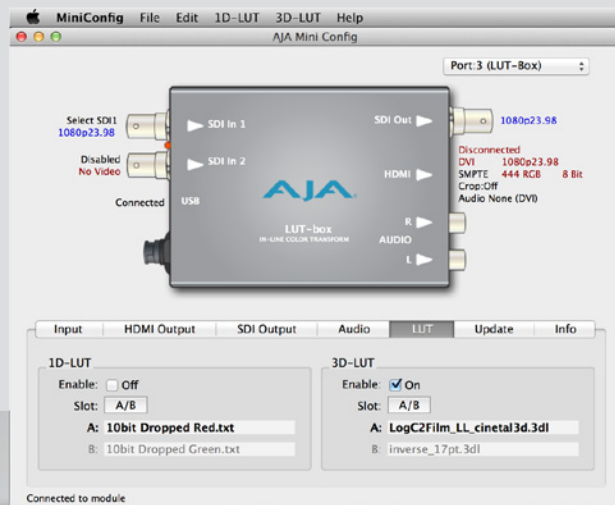
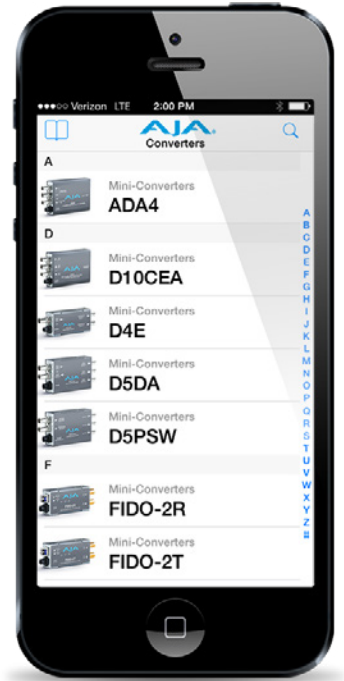
Find the Right AJA Converter for Any Situation

Information on the complete line of AJA Converters is now available as a mobile app on iOS. The AJA Converter product line is extensive and this app helps you find the right Converter for any situation, wherever you are.

Individual products have links back to the main AJA website for more details and you can email product information directly from the app. The free AJA Mini-Matrix app for iPad and iPhone is available now in the Apple iTunes Store.

[Download from App Store](#)

[Visit Mini-Matrix on AJA.com](#)



USB and Mini-Config Support Visual Configuration and Control

AJA's free Mini-Config software can be used with any USB enabled AJA Mini-Converter and provides an easy to use graphic interface with detailed information about the current input and output formats. Control all the parameters of any supported AJA Mini-Converter as well as loading firmware updates from AJA that add new features and functionality.

[Download Mini-Config](#)

HDMI Converters

HA5

HDMI to HD/SD-SDI Converter with Embedded Audio

The HA5 converts HDMI to SDI or HD-SDI. Two channels of HDMI audio are embedded into the HD/SD-SDI output allowing a convenient single cable audio/video connection. The HA5 provides two SDI/HD-SDI outputs and supports long HDMI cables on the input. The HA5 is useful for connecting HDMI cameras to HD/SD-SDI equipment.

\$345 US MSRP*



Features:

- HDMI to HD/SD-SDI
- Full HDMI support including embedded audio
- Equalized HDMI input supports long HDMI cables up to 30m, 24 gauge
- PLL clock filtering for low jitter HD/SD-SDI outputs
- Lock LED shows type of input source, SD (green) or HD (red)
- HDMI v1.2 standard
- 1m HDMI cable included
- DWP-U-R1 power supply included
- 5 year warranty

HA5-Plus

HDMI to 3G-SDI Converter with Embedded Audio

HA5-Plus is AJA's HDMI to SDI Mini-Converter. The HDMI input is converted to 3G-SDI output for driving SDI monitoring solutions. Up to eight channels of HDMI audio are passed through to the SDI output as well as the ability to embed two channels of analog audio.

\$395 US MSRP*



Features:

- HDMI to 3G/HD/SD-SDI
- Full HDMI support including embedded audio
- Equalized HDMI input supports long HDMI cables up to 30m, 24 gauge
- PLL clock filtering for low jitter SDI outputs
- Lock LED shows type of input source, SD (green) or HD (red)
- HDMI v1.2 standard
- 1m HDMI cable included
- Configure via USB port and supplied Mini-Config software
- DWP-U-R1 power supply included
- 5 year warranty

HDMI Converters

HA5-4K

HDMI to 4K/UltraHD-SDI Converter with Embedded Audio

AJA's HA5-4K Mini-Converter provides high quality conversion of HDMI to 4K SDI with 4x 3G SDI outputs. HA5-4K allows conversion of HDMI video from DSLR's, mirrorless cameras, action cameras, or prosumer 4K video cameras to 4K SDI for easy integration with professional connectivity.

\$595 US MSRP*



Features:

- Supports HDMI v2.0 up to 2160p 60
- 4K/UltraHD conversion to quad or dual 3G SDI out
- 3G or HD conversion to single 3G SDI out
- Supports quadrant (square division) and 2SI (two sample interleave) 4K mapping
- 2-Channel embedded audio
- Lock LED shows type of input source, SD (green), HD (red), or 4K/UltraHD (orange)
- Configure via USB port and supplied Mini-Config software
- DWP-U-R1 power supply included
- 5 year warranty

HA5-Fiber

HDMI to 3G-SDI Fiber Converter with Embedded Audio

The HA5-Fiber converts a HDMI input to 3G-SDI over single mode 1310 nm fiber optic cable (ST style fiber connector) for transporting HDMI sources over fiber. The small form factor enables this Mini-Converter to easily fit onto the back of a camera or neatly behind an equipment rack. Embedded 8-Channel audio is supported in the fiber output allowing a convenient single cable audio/video connection up to 10km. The HA5-Fiber also provides 2-Channel RCA style audio inputs for a stereo audio input when needed.

\$695 US MSRP*



Features:

- HDMI to 3G-SDI over fiber
- Supports single mode 1310 nm fiber optic cable with ST transmitter
- Full HDMI input support including embedded audio
- Additional 2-Channel RCA style analog audio (-10dBu nominal) input
- No configuration necessary
- 1m HDMI cable included
- 5 year warranty

HDMI Converters

Hi5

HD/SD-SDI to HDMI Converter with Embedded Audio

The Hi5 converts SDI or HD-SDI to HDMI for driving HDMI monitors. Embedded SD/HD-SDI audio is supported in the HDMI output allowing a convenient single cable audio/video connection. The Hi5 provides 2-Channel RCA style audio outputs for separate audio monitoring if needed. The Hi5 also provides a looping HD/SD-SDI output useful for connecting additional equipment, or for daisy chaining multiple monitors to the same HD/SD-SDI source.

\$345 US MSRP*



Features:

- HD/SD-SDI to HDMI
- Full HDMI support including embedded audio
- Additional 2-Channel RCA jack audio output
- Equalized looping HD/SD-SDI output
- No configuration necessary
- HDMI v1.2 standard
- 1m HDMI cable included
- DWP-U-R1 power supply included
- 5 year warranty

Hi5-Plus

3G-SDI to HDMI Converter with Embedded Audio

Hi5-Plus is AJA's SDI to HDMI Mini-Converter. Capable of handling 3G, HD, SD-SDI inputs. Hi5-Plus outputs deep color 30 and 36-bit video for driving HDMI monitoring solutions. Embedded audio is passed through to the output and a 2-Channel RCA analog output allows easy audio monitoring without the need to extract the embedded audio.

\$395 US MSRP*



Features:

- Supports HDMI v1.4
- Easily integrate HDMI devices into SDI workflows
- 3G capability for high data rate signals
- Compact size fits easily in small spaces
- 16-Channel embedded SDI and 8-Channel HDMI audio
- 2-Channel RCA analog audio output
- Configure via USB port and supplied Mini-Config software
- DWP-U-R1 power supply included
- 5 year warranty

HDMI Converters

Hi5-3G

3G-SDI to HDMI Video and Audio Converter

The Hi5-3G converts 3G-SDI, dual or single link HD-SDI, or SD-SDI to HDMI v1.3a for driving HDMI monitors. HDMI v1.3a capability at 30-bits per pixel allows full support of 10-bit monitors. Audio is supported in the HDMI output allowing a convenient single cable audio/video connection. The Hi5-3G provides 2-Channel RCA style audio outputs for separate audio monitoring if needed. USB connectivity allows for easy PC/Mac setup and field upgrades.

\$595 US MSRP*



Features:

- 3G/Dual Link/HD/SD-SDI to HDMI
- Additional 2-Channel RCA analog audio output (User assignable channels)
- Full HDMI 1.3a support including:
 - Deep color 30 and 36-bit video per pixel (24-bit also supported)
 - 2 or 8-Channels of embedded audio
- 1m HDMI cable supplied
- Configure via USB port and supplied Mini-Config software
- DWP-U-R1 power supply included
- 5 year warranty

Hi5-3D

HD-SDI Multiplexer to HDMI and SDI Video and Audio Converter

The Hi5-3D is a 3D video multiplexer that combines two HD-SDI inputs into various multiplexed 3D formats for output on HDMI and HD-SDI. The HDMI output supports EDID transactions that allow automatic 2D/3D configuration per the HDMI monitor's capabilities. Input SDI 2 will be frame synchronized to input SDI 1 in 3D Modes. Embedded SDI input audio is embedded in both the HDMI and SDI outputs. 2-Channel RCA audio output is also supported with user control of channel selection. The Hi5-3D supports AJA's Mini-Config application for user configuration and firmware download.

\$495 US MSRP*



Features:

- HD-SDI to HDMI 1.4a with additional SDI output
- Non 3D HD/SD-SDI pass thru to HDMI
- 10-bit HDMI 1.4a support including 3D and embedded audio
- Additional 2-Channel RCA jack audio output
- Configure via USB port and supplied Mini-Config software
- DWP-U-R1 power supply included
- 5 year warranty

HDMI Converters

Hi5-4K

4K/UltraHD-SDI to HDMI Converter

AJA's Hi5-4K Mini-Converter provides a simple monitoring connection from professional 4K devices using 4 SDI outputs to new displays with 4K capable HDMI inputs. Hi5-4K is a single, highly portable device that allows more affordable monitoring solutions in professional workflows. Hi5-4K-Plus also supports HDR workflows by generating HDR metadata in accordance with HDMI v2.0a/CTA-861.3.

\$595 US MSRP*.

HDR



Features:

- Supports HDMI v1.4 up to 2160p/59.94/60 4:2:0
- 4K/UltraHD inputs using quad or dual 3G SDI
- Supports 3G/Dual Link/HD/SD-SDI
- Supports quadrant (square division) and 2SI (two sample interleave) 4K mapping
- Embedded audio support
- Configure via USB port and supplied Mini-Config software
- DWP-U-R1 power supply included
- 5 year warranty

Hi5-4K-Plus

4K/UltraHD-SDI to full HDMI 2.0 Converter

The Hi5-4K-Plus keeps pace with the expanded data rates of HDMI 2.0, providing up to 18 Gbps. This higher data rate supports the rich color of 4:2:2 and 4:4:4 chroma subsampling in 4K/UltraHD up to 60 fps. Preserve pristine image fidelity and color depth from professional 4K HFR devices when monitoring to cost effective HDMI 2.0 displays and ensure complete compatibility with SMPTE 2SI (Two Sample Interleave) support. Hi5-4K-Plus also supports HDR workflows by generating HDR metadata in accordance with HDMI v2.0a/CTA-861.3.

\$695 US MSRP*

HDR



Features:

- Fully supports HDMI v2.0 to the maximum 18 Gbps for 4K/UltraHD 50/59.94/60 4:2:2/4:4:4 and HDR 10
- Supports Quad 3G & 1.5G/Dual Link 3G/3G-SDI
- Supports both quadrant (square division) and 2SI (two sample interleave) 4K mapping
- Embedded audio support 8-Channel 24-bit
- Configure via USB port and supplied Mini-Config software
- DWP-U-R1 power supply included
- 5 year warranty

HDMI Converters

Hi5-Fiber

HD/SD-SDI over Fiber to HDMI Video and Audio Converter

The Hi5-Fiber converts HD/SD-SDI over single mode 1310 nm fiber optic cable (ST style fiber connector) to HDMI for driving HDMI monitors. Embedded 8-Channel HD/SD-SDI audio is supported in the HDMI output allowing a convenient single cable audio/video connection. The Hi5-Fiber provides 2-Channel RCA style audio outputs for separate audio monitoring if needed.

\$695 US MSRP*



Features:

- Fiber optic HD/SD-SDI to HDMI
- Supports single mode 1310 nm fiber optic cable with ST receiver
- Full HDMI support including embedded audio
- Additional 2-Channel RCA jack audio output
- No configuration necessary
- HDMI v1.2 standard
- 1m HDMI cable included
- DWP-U-R1 power supply included
- 5 year warranty

Scaling Converters

4K2HD

4K/UltraHD-SDI to 3G-SDI Down-Converter

AJA's 4K2HD down-converts professional SDI 4K/UltraHD signals to HD resolution using AJA's high quality scaling for cost effective monitoring and conversion, producing fantastic looking HD images for on-set monitoring or direct to air broadcast. 4K2HD outputs SDI and HDMI simultaneously. 4K2HD supports high frame rate (HFR) 4K inputs at 50 and 60fps which are down converted to HD outputs at 50 and 60fps for accurate viewing. 4K2HD's configuration options can extract an HD resolution image from the 4K input to provide a 1:1 pixel image for 4K focus checks on HD displays. Configuration can be set remotely via AJA Mini-Config software control over USB.

\$795 US MSRP*



Features:

- Down-conversion to support 4K on HD-SDI and HDMI devices
- Supports HDMI v1.4 up to 1080p/59.94/60 4:2:0
- 4K/UltraHD inputs using quad or dual 3G SDI
- Supports 3G/Dual Link/HD/SD-SDI
- Simultaneous SDI and HDMI outputs
- True 4K downscaled and cropped for HD output
- Center cut of original 4K frame supported for focus checks
- Supports quadrant (square division) and two sample interleave 4K mapping
- Configure via USB port and supplied Mini-Config software
- DWP-U-R1 power supply included
- 5 year warranty

HD10MD4

HD/SD-SDI to SD-SDI Down-Converter

The HD10MD4 is a miniature digital down-converter for converting HD-SDI video to standard definition SDI and analog component/composite video. The HD10MD4 uses a full 10-bit data path and multipoint interpolation to produce broadcast quality down converted video. In addition, the HD10MD4 converts either 1080p 23.98 or 1080psf 23.98 to 59.94 fps output video using the standard 3:2 pulldown technique. The output can be formatted for either 4:3 or 16:9 standard definition monitors. 4-Channel input embedded HD-SDI audio is passed to the SDI output.

\$995 US MSRP*



Features:

- Low cost broadcast quality 10-bit HD to SD down-converter
- Multi-standard HD-SDI or SDI Input
- Equalized loop through HD/SD-SDI output
- SDI and component/composite analog outputs
- 3:2 pulldown for 1080p 23.98 and 1080psf 23.98 inputs
- Full 10-bit data path, multipoint interpolation
- Configurable for 16:9 or 4:3 monitors
- Letterbox and crop modes
- 4:3 safe area graticule
- Passes 8-Channel embedded audio, 4-Channel on down-convert
- External DIP switch configuration
- Configure via USB port and supplied Mini-Config software
- DWP-U-R1 power supply included
- 5 year warranty

Scaling Converters

HDP3

3G-SDI to DVI-D and Audio Converter

The HDP3 is a 3G-SDI to DVI-D mini-converter for digital display devices such as LCD, DLP, and Plasma monitors or projectors. Using AJA's very high quality scaling engine and deinterlacer, the HDP3 handles 3G-SDI signals up to 1080p60. The HDP3 will adapt the input frame rate for monitor compatibility, and because it responds to EDID from monitor or projector, it can automatically determine the best output format and scaling parameters. 1 to 1 pixel mapping can also be selected. The HDP3 provides user-assignable 2-Channel analog audio monitoring, 2 to 8-Channel 24-bit embedded audio (via DVI-D to HDMI adapter only), plus a looping output of the SDI input retaining 8-Channels of embedded audio.

\$695 US MSRP*



Features:

- 3G-SDI to DVI-D supports up to 1080p60
- Automatically adapts to popular LCD/DLP/Plasma monitors (and projectors) up to 1920x1200 and 1080p
- High quality scaling engine for proper display of 4:3 or 16:9 content
- 1:1 scaling for suitable monitor configurations
- 1:1 pixel mapping when selected
- 2-Channel RCA analog audio output (user assignable channels)
- HD-SDI/SDI looping output
- Configure via USB port and supplied Mini-Config software
- DWP-U-R1 power supply included
- 5 year warranty

UDC

3G-SDI Up, Down, Cross-Converter

The UDC is a broadcast quality up, down, cross Mini-Converter which can convert between 3G, HD, and SD video formats. Using the same AJA industry leading conversion technology as in our model FS2, the UDC provides very high quality conversions at a low price. I/Os include 3G/HD/SD-SDI input and output, HDMI output, and 2-Channel RCA style audio output. The UDC also has a built-in frame synchronizer and utilizes an external reference to properly time the output signal. The UDC can be controlled by local DIP switches with additional control available via USB and AJA's Mini-Config application. A Reference Input allows the UDC to function as a frame synchronizer, locking to a local reference.

\$695 US MSRP*



Features:

- Converts between 3G, HD, and SD formats
- Supports 1080p50/60
- Very high quality conversions
- Built-in frame synchronizer
- 8-Channel embedded audio
- HDMI output with 8-Channel audio
- 2-Channel RCA analog audio output
- Reference input
- Configure via USB port and supplied Mini-Config software
- DWP-U-R1 power supply included
- 5 year warranty

Region of Interest Scan Converters

ROI-SDI

3G-SDI to 3G-SDI and HDMI outputs with Region of Interest scaling and direct 3G-SDI loop through

AJA's ROI-SDI scan converter allows exceptionally high quality conversion and extraction of a Region of Interest (ROI) from a 3G-SDI input to 3G-SDI and HDMI mirrored outputs at an affordable price in a very portable form factor. With incredible image scaling, extensive aspect ratio conversion and audio functionality, ROI-SDI fulfills the growing need to customize video signals for a range of display and SDI workflow needs without sacrificing budget or space.

\$995 US MSRP*



Features:

- 3G-SDI to 3G-SDI and HDMI conversion
- Region of Interest scaling
- Scan converter with dual independent scalars
- Rotation, Horizontal and Vertical flip controls.
- 3G-SDI loop through with Audio embedding
- Aspect ratio conversion
- Genlock input
- Configure via USB port and supplied Mini-Config software
- Uses 5-18VDC power universal power supply included
- 5 year warranty

ROI-DVI

DVI-D to 3G-SDI with Region of Interest Scaling

AJA's ROI-DVI Scan Converter allows exceptionally high quality conversion of computer DVI outputs to baseband video over SDI at an affordable price and a very portable size. With incredible image scaling as well as aspect and frame rate conversion, ROI-DVI fulfills the growing need to properly incorporate computer signals into the video world without sacrificing budget or space. ROI-DVI provides control to manage embedded and external audio. The free Mini-Config application lets you interactively select a Region of Interest from the incoming DVI signal and control how that region is scaled to the output resolution using AJA's high quality scaling algorithms for the cleanest picture quality possible.

\$995 US MSRP*



Features:

- Convert computer signals to professional video, with Region of Interest scaling
- User adjustable Region of Interest with interactive on-screen controls via supplied software
- Frame rate conversion
- Automatic input detection and configuration
- 3G/HD/SD-SDI output support for common SD and HD formats
- 4:3/16:9 conversion modes supported
- Embedded SDI audio output
- Reference input
- 3.5mm analog audio input embedded into SDI output
- Easy user control via USB
- Loop through DVI-D connector
- Configure via USB port and supplied Mini-Config software
- DWP-U-R1 power supply included
- 5 year warranty

Region of Interest Converters

ROI-HDMI

HDMI to 3G-SDI with Region of Interest Scaling

AJA's ROI-HDMI Scan Converter allows exceptionally high quality conversion of computer HDMI outputs to baseband video over SDI at an affordable price and a very portable size. With incredible image scaling as well as aspect and frame rate conversion, ROI-HDMI fulfills the growing need to properly incorporate computer signals into the video world without sacrificing budget or space. ROI-HDMI provides control to manage embedded and external audio. The free Mini-Config application lets you interactively select a Region of Interest from the incoming HDMI signal and control how that region is scaled to the output resolution using AJA's high quality scaling algorithms for the cleanest picture quality possible.



\$995 US MSRP*

Features:

- Convert computer signals to professional video, with Region of Interest scaling
- User adjustable Region of Interest with interactive on-screen controls via supplied software
- Frame rate conversion
- Automatic input detection and configuration
- 3G/HD/SD-SDI output support for common SD and HD formats
- 4:3/16:9 conversion modes supported
- Embedded SDI audio output
- Reference input
- 3.5mm analog audio input embedded into SDI output
- Easy user control via USB
- Loop through HDMI connector
- Configure via USB port and supplied Mini-Config software
- DWP-U-R1 power supply included
- 5 year warranty

ROI-DP

DisplayPort to 3G-SDI with ROI scaling

AJA's ROI-DP Scan Converter allows exceptionally high quality conversion of computer DisplayPort outputs to baseband video over SDI at an affordable price and a very portable size. With incredible image scaling as well as aspect and frame rate conversion, ROI-DP fulfills the growing need to properly incorporate computer signals into the video world without sacrificing budget or space. ROI-DP provides control to manage embedded and external audio. The free Mini-Config application lets you interactively select a Region of Interest from the incoming DisplayPort signal and control how that region is scaled to the output resolution using AJA's high quality scaling algorithms for the cleanest picture quality possible.



\$995 US MSRP*

Features:

- Convert computer signals to professional video, with Region of Interest scaling
- User adjustable Region of Interest with interactive on-screen controls via supplied software
- Frame rate conversion
- Automatic input detection and configuration
- 3G/HD/SD-SDI output support for common SD and HD formats
- 4:3/16:9 conversion modes supported
- Embedded SDI audio output
- Reference input
- 3.5mm analog audio input embedded into SDI output
- Easy user control via USB
- Loop through DisplayPort connector
- Configure via USB port and supplied Mini-Config software
- DWP-U-R1 power supply included
- 5 year warranty

IP Converters

AJA IP Mini-Converters are designed for point of use applications for the transport, reception and decoding of IP based video sources. Rugged, compact and fanless, these practical Mini-Converters provide the bridge between Baseband and IP video for a range of applications.

IPR-1G-SDI

JPEG 2000 IP Video and Audio to 3G-SDI Converter

The IPR-1G-SDI is a VSF TR-01 (and other JPEG 2000 formats) to 3G-SDI converter suited for point-of-use applications including source monitoring, digital signage, and video walls. The IPR 1G SDI decodes VSF TR-01 streams then formats the data for 3G-SDI output. The audio associated with the video stream is extracted, synchronized, and then embedded into the SDI stream as well as output on an analog RCA stereo interface.

\$795 US MSRP*



Features:

- 1x RJ-45 (IEC 60603-7) for 10/100/1000Base-T Ethernet media input
- Essence support: VSF TR-01 and other JPEG 2000 MPEG-2 workflows
- Rugged, fanless design
- 1x 3G-SDI BNC output with 4:2:2 10-bits/pixel
- Audio is embedded in 3G-SDI and analog audio outputs
- Full 10-bit pixel processing pipeline
- Network (LAN) control and status
- Quick network setup with AJA eMini-Setup software

IPR-1G-HDMI

JPEG 2000 IP Video and Audio to HDMI Converter

The IPR-1G-HDMI is a VSF TR-01 (and other JPEG 2000 formats) to HDMI converter suited for point-of-use applications including source monitoring, digital signage, and video walls. The IPR-1G-HDMI decodes VSF TR-01 JPEG 2000 streams then formats the data for output on a full size HDMI 1.4 interface. The audio associated with the video stream is extracted, synchronized, and then embedded into the HDMI signal as well as output on an analog RCA audio interface.

\$795 US MSRP*



Features:

- 1x RJ-45 (IEC 60603-7) for 10/100/1000Base-T Ethernet media input
- Essence support: VSF TR-01 and other JPEG 2000 MPEG-2 workflows
- Rugged, fanless, portable design
- Full size HDMI 1.4 video output
- Audio is embedded in HDMI and analog audio outputs
- Full 10-bit pixel processing pipeline
- Network (LAN) control and status
- Quick network setup with AJA eMini-Setup software

Mini-Connect

Mini-Connect

Control AJA ROI Mini-Converters via Ethernet

Mini-Connect enables control of up to four ROI Mini-Converters over a single Ethernet connection. Mini-Connect integrates with your existing Ethernet network to provide easy access from anywhere allowing you to use any web browser on any platform for easy configuration and control of ROI Mini-Converters anywhere in your facility or across the web.



\$345 US MSRP*

Features:

- Remote control of AJA ROI Devices via Ethernet
- Connect up to 4 USB enabled AJA ROI Mini-Converters
- Integrated web server
- Web-based interface. Access from any connected web browser on any platform
- Configure via USB port and supplied Mini-Config software
- DWP-U-R1 power supply included
- 5 year warranty

Analog Converters

HD10A-Plus

HD Analog Video to HD-SDI Converter

The HD10A-Plus is a miniature, high quality, 10-bit analog to digital converter for HD workflows. The HD10A-Plus can add an HD or SD SDI output to cameras, VTRs, or other analog only equipment, even computers with HD RGB graphics. The HD10A-Plus accepts HD YPbPr or RGB analog and outputs three duplicate SDI signals. Works in 1080i, 1080psf, and 720p with internal or external sync (tri-level). The HD10A-Plus also includes SD mode support for PAL and NTSC needs.

\$695 US MSRP*



Features:

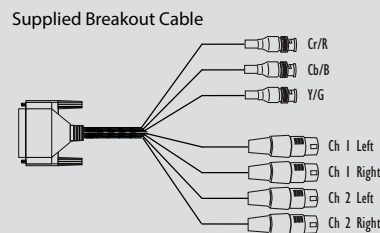
- High quality 10-bit HDTV A/D Conversion
- Full bandwidth component HD RGB or YPbPr input
- 3 HD-SDI Outputs
- Multi-standard
- SD mode support
- Internal or external sync
- External DIP switch configuration
- DWP-U-R1 power supply included
- 5 year warranty

HD10AVA

HD Analog Video and Audio to HD-SDI Converter

The HD10AVA is a miniature, high quality, audio/video, HD/SD A/D converter. The HD10AVA automatically detects the video input format and embeds the audio inputs in the SD/HD-SDI outputs. The HD10AVA is useful for adding an SD/HD-SDI audio/video output to tape decks or any professional video equipment with analog outputs. The HD10AVA is especially useful for adding HD-SDI outputs to most HDV cameras or decks by using the component outputs of such devices. The HD10AVA uses a breakout cable for audio/video inputs and provides 3 SD-HD-SDI outputs on BNCs.

\$695 US MSRP*



Features:

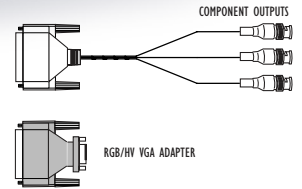
- Converts HD or SD analog video to SDI
- Converts and embeds analog audio
- Compact size fits easily in small spaces
- DWP-U-R1 power supply included
- 5 year warranty

Analog Converters

HD10C2

HD/SD-SDI to HD Analog Video Converter

The HD10C2 is a high quality dual rate 10-bit HD converter that works with both HD-SDI and SDI inputs. For HD-SDI inputs, the HD10C2 outputs full bandwidth HD component or VGA style RGBHV video. For SDI inputs, component or composite SD outputs are supported. When connected to a multi-format monitor like the Sony® 20L5, the HD10C2 will automatically provide an image from almost any HD or SD input format. The HD10C2 also features 2 equalized HD-SDI outputs. A 3 BNC breakout cable and SVGA adapter are included. Optional 5 BNC cable available for separate H & V for HD only.



\$595 US MSRP*

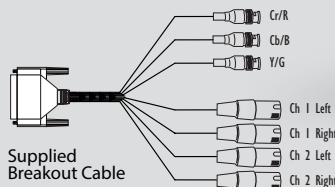
Features:

- Low cost, high quality, 10-bit dual rate HD/SD D/A conversion
- Full bandwidth HD analog RGB or YPbPr output (HD input)
- Component/Composite SD output (SD input)
- 2 equalized loop through HD-SDI/SDI outputs
- RGBHV VGA style HD output using supplied adapter
- HD sync selectable between bi-level and tri-level
- 4:3 safe area graticule (HD)
- DWP-U-R1 power supply included
- 5 year warranty

HD10CEA

HD/SD-SDI to Analog Video and Audio Converter

The HD10CEA converts HD/SD-SDI video with embedded audio to analog video and 4-Channel balanced analog audio. SD video outputs can be configured as YPbPr (Betacam or SMPTE, EBU N10), RGB, composite or YC (S-Video). HD video outputs can be configured as YPbPr or RGB. The analog audio outputs can be wired in a balanced or unbalanced configuration. The 4 audio channels can be selected from group 1-4. Audio and video output connections are available on a 25 pin D subminiature connector (3 x BNC 4 x XLR breakout cable supplied). All video/audio configuration is done by external DIP switch selection. This versatile, low cost, miniature monitoring solution also outputs two loop through HD/SD-SDI outputs. Note: The HD10CEA does not up or down convert between HD and SD.



\$695 US MSRP*

Features:

- Digital to analog audio and video converter
- SD/HD-SDI with embedded audio input
- SD component or composite video outputs (SD Input) HD
- Component video outputs (HD Input)
- 4-Channel balanced audio output
- 2 equalized, loop through SD/HD-SDI outputs
- Selectable audio channel pair/group
- 5 year warranty

Analog Converters

V2Analog

HD/SD-SDI to Analog Video Converter

V2Analog is a high quality, cost effective digital to analog video converter that is an ideal solution for integrating analog equipment such as monitors and tape decks into digital workflows. V2Analog performs high quality SDI digital to component or composite analog conversion at either SD or HD resolutions with a full 10-bit data path. V2Analog takes incoming SDI signals and converts to YPbPr (SMPTE, EBU N10), Betacam, or RGB component outputs or NTSC/PAL or Y/C (S-Video) composite outputs for complete integration into any workflow. Configuration can be set with the unit on unit DIP switches or remotely via AJA Mini-Config software control over USB.

Note: V2Analog does NOT up convert or down convert between SD and HD resolutions. Only digital to analog signal conversion is supported.



\$345 US MSRP*

Features:

- 10-bit AJA digital to analog conversion
- Low power, compact size
- HD/SD-SDI input
- YPbPr/RGB component or composite output
- Configure via USB port and supplied Mini-Config software
- DWP-U-R1 power supply included
- 5 year warranty

V2Digital

Analog Video to HD/SD-SDI Converter

V2Digital is a high quality, cost effective analog to digital video converter perfect for facilities needing to integrate signal types. V2Digital provides AJA's high quality 10-bit conversion of component or composite analog video to SDI at either SD or HD resolutions utilizing a full 10-bit data path and 2x oversampling to ensure a quality conversion all at an extraordinary price. V2Digital accepts YPbPr (SMPTE, EBU N10), Betacam, or RGB component inputs or NTSC/PAL or Y/C (S-Video) composite inputs with a 4-line Adaptive Comb Filter providing high quality decoding of composite sources. The comb filter can be switched to 2-line or notch modes for minimum delay requirements. Configuration can be set with the unit on unit DIP switches or remotely via AJA Mini-Config software control over USB.

Note: V2Digital does NOT up convert or down convert between SD and HD resolutions. Only analog to digital signal conversion is supported.



\$345 US MSRP*

Features:

- 10-bit AJA quality analog to digital conversion
- Low power, compact size
- YPbPr/RGB component or composite input
- HD/SD-SDI output
- Configure via USB port and supplied Mini-Config software
- DWP-U-R1 power supply included
- 5 year warranty

Color Management

LUT-box

In-line Color Transform

LUT-box ensures that your monitor is showing the correct color space and look for any source signal. Load 1D LUTs and 3D LUTs of 16x16x16 or 17x17x17 size using the USB connection and free Mini-Config software on either Mac or Windows. Simultaneous outputs allow you to utilize both HDMI and SDI monitors from a single LUT-box. Embedded audio is passed through to the outputs and a 2-Channel RCA analog output allows easy audio monitoring without the need to extract the embedded audio.

\$695 US MSRP*



Features:

- Ensure proper image monitoring on-set or in the studio
- Simultaneous SDI and HDMI outputs
- 3D LUT support at 17x17x17
- +5 to 20V DC regulated, 8 watts max
- 12-bit processing
- 16-Channel embedded SDI and 8-Channel HDMI audio
- 2-Channel RCA analog audio output
- Configure via USB port and supplied Mini-Config software
- DWP-U-R1 power supply included
- 5 year warranty



HDBaseT

AJA HDBaseT converters can transmit and receive UltraHD/HD signals up to 100 meters over Cat 5 (or better) cable to or from 6G-SDI, 3G-SDI and or HDMI depending on the model, utilizing the industry standard HDBaseT protocol. Bidirectional IR and RS-232 for device control are also supported, making these Mini-Converters ideal in a variety of scenarios including: fixed installation AV, digital signage, live events, post production/network/studio environments and on-set.

RovoRx-SDI

UltraHD/HD HDBaseT Receiver to 6G/3G-SDI and HDMI w/PoH, Genlock

RovoRx-SDI is an UltraHD/HD HDBaseT Receiver with four integrated 6G/3G-SDI outputs and HDMI video and audio outputs specifically designed to receive RovoCam's output. Receive the RovoCam's video and audio up to 100m away from the camera, and output to SDI monitors, routers and recorders and HDMI TVs and devices. RovoRx-SDI also offers a DA (Distribution Amplifier) Mode for extensive output options. The HDBaseT connector on RovoRx-HDMI supports camera uncompressed video, audio, power, and control, all over a single Cat 5e/6 cable, greatly simplifying cabling and systems integration.

\$995 US MSRP*

Features:

- 4x 6G/3G-SDI outputs support video and embedded audio for incredible multi-format compatibility
- 8-Channels (4 pairs) of SDI embedded audio supported
- DA Mode for distributing 6G/3G-SDI UltraHD and HD signals from HDBaseT sources
- An HDMI simultaneous output for UltraHD and HD displays
- REF in/out that can be genlocked with other broadcast gear
- A USB port for software configuration of SDI settings
- Power over HDBaseT (PoH), allowing RovoCam to be powered remotely from its physical location
- 5 year warranty



RovoRx-HDMI

HDBaseT to HDMI Converter with PoH

RovoRx-HDMI is a companion HDBaseT receiver for the AJA RovoCam, offering the simplest integration of camera control, RS-232, video, audio, and power along a single cable. Receive the RovoCam's video and audio up to 100m away from the camera, and output to HDMI TVs and devices. The HDBaseT connector on RovoRx-HDMI can support uncompressed video, audio, power, and control, all over a single Cat 5e/6 cable from any compatible third party device, greatly simplifying cabling and systems integration. HDMI and audio outputs on the RovoRx-HDMI support any HDMI device, including affordable consumer displays.

\$495 US MSRP*

Features:

- 1 x UltraHD/HD HDMI 1.4b output
- 1 x RCA stereo audio output (RovoCam only)
- 1 x HDBaseT connector (RJ-45)
- 1 x 3.5mm TRS input (RS-232) for VISCA camera control
- 1 x USB for firmware upgrades and additional control
- DWP-U-R1 power supply included
- 5 year warranty



HDBaseT

HB-T-HDMI

HDMI to HDBaseT Converter

- HDBaseT 4K/UltraHD Signal Extender
- Converts UltraHD, 4K or HD HDMI to HDBaseT
- Extend uncompressed 4K or HD HDMI signal up to 100m over Cat 5 (or better)
- Wide support for VESA (Computer) formats and DVI compatibility (with adapter)
- IR IN and OUT
- RS-232 device control connection

\$395 US MSRP*



Features:

- Extends bidirectional IR and RS-232 on the same cable
- Support for deep color, 3D, EDID, HDCP
- Support for PCM 2-Channel, LPCM 5.1, LPCM 7.1
- Support for Dolby® Digital, Dolby Digital Plus, Dolby TrueHD, Dolby Atmos, DTS® Digital Surround and DTS-HD Master Audio
- DWP-U-R1 power supply included

HB-R-HDMI

HDBaseT to HDMI Converter

- HDBaseT 4K/UltraHD Signal Extender
- Converts HDBaseT to HDMI
- Extend uncompressed 4K or HD HDMI signal up to 100m over Cat 5 (or better)
- Wide support for VESA (Computer) formats and DVI compatibility (with adapter)
- IR IN and OUT
- RS-232 device control connection

\$395 US MSRP*



Features:

- Extends bidirectional IR and RS-232 on the same cable
- Support for deep color, 3D, EDID, HDCP
- Support for PCM 2-Channel, LPCM 5.1, LPCM 7.1
- Support for Dolby Digital, Dolby Digital Plus, Dolby TrueHD, Dolby Atmos, DTS Digital Surround and DTS-HD Master Audio
- DWP-U-R1 power supply included
- 5 year warranty

HDBaseT

HB-R-SDI

HDBaseT to SDI Converter

- HDBaseT HD/SD Signal Extender
- Converts HDBaseT to SDI
- Extend HD/SD-SDI signal up to 100m over Cat 5 (or better)
- Wide support for VESA (Computer) formats and DVI compatibility (with adapter)
- IR IN and OUT
- RS-232 device control connection

\$595 US MSRP*



Features:

- Extends bidirectional IR and RS-232 on the same cable
- Support for deep color, 3D, EDID, HDCP
- Support for PCM 2-Channel, LPCM 5.1, LPCM 7.1
- Support for Dolby Digital, Dolby Digital Plus, Dolby TrueHD, Dolby Atmos, DTS Digital Surround and DTS-HD Master Audio
- Configure via USB port and supplied Mini-Config software
- DWP-U-R1 power supply included
- 5 year warranty

HB-T-SDI

SDI to HDBaseT Converter

- HDBaseT HD/SD Signal Extender
- Converts SDI to HDBaseT
- Extend HD/SD-SDI signal up to 100m over Cat 5 (or better)
- Wide support for VESA (Computer) formats and DVI compatibility (with adapter)
- IR IN and OUT
- RS-232 device control connection

\$595 US MSRP*



Features:

- Extends bidirectional IR and RS-232 on the same cable
- Support for deep color, 3D, EDID, HDCP
- Support for PCM 2-Channel, LPCM 5.1, LPCM 7.1
- Support for Dolby Digital, Dolby Digital Plus, Dolby TrueHD, Dolby Atmos, DTS Digital Surround and DTS-HD Master Audio
- Configure via USB port and supplied Mini-Config software
- DWP-U-R1 power supply included
- 5 year warranty

Optical Fiber Converters



FiDO

Single, Dual, and Quad Channel SDI/Fiber Converters

FiDO SDI/Optical Fiber Mini-Converters allow the transport of 3G-SDI over distances up to 10km via standard single mode fiber optic cable. The compact, low profile enclosure is perfect for use in tight spaces such as equipment racks, trucks and crowded facilities. Choose from LC, ST, or SC connectors, depending on the converter model, for unmatched

flexibility and cost efficiency. FiDO Mini-Converters meet all relevant SMPTE specifications as well as offering electrical isolation to eliminate potential ground loop problems for a rugged, versatile solution that is suitable for a variety of applications.

Starting at
\$445 US MSRP*

Features:

- Transport of SDI, HD-SDI, and 3G HD-SDI over single mode optical fiber
- Autodetection of video format
- All SDI ancillary data including embedded audio is passed
- LC, ST OR SC fiber connectors
- Simplex, duplex or quad models available
- All inputs, either SDI or fiber, are equalized and relocked
- ASI compatible
- Optional CWDM SFP modules
- Useful for eliminating ground loop problems
- DWP-U-R1 power supply included
- 5 year warranty

Models:

- FiDO-4R: Quad Channel LC Fiber to SDI converter
 - FiDO-4T: Quad Channel SDI to LC Fiber converter
 - FiDO-4R-ST: Quad Channel ST Fiber to SDI converter
 - FiDO-4T-ST: Quad Channel SDI to ST Fiber converter
 - FiDO-2R: Dual Channel LC Fiber to SDI converter
 - FiDO-2T: Dual Channel SDI to LC Fiber converter
 - FiDO-R: Single Channel LC Fiber to SDI converter, with dual SDI outputs
 - FiDO-T: Single Channel SDI to LC Fiber converter, with looping SDI output
 - FiDO-R-SC: Single Channel SC Fiber to SDI converter, with dual SDI outputs
 - FiDO-T-SC: Single Channel SDI to SC Fiber converter, with looping SDI output
 - FiDO-R-ST: Single Channel ST Fiber to SDI converter, with dual SDI outputs
 - FiDO-T-ST: Single Channel SDI to ST Fiber converter, with looping SDI output
 - FiDO-TR: SDI/LC Fiber transceiver
 - FiDO-4T-CWDM: Quad Channel SDI to LC Fiber converter for CWDM *
 - FiDO-2T-CWDM: Dual Channel SDI to LC Fiber converter for CWDM *
- *CWDM SFP modules purchased separately*

Accessories:

- DWP-U-R1: Power supply included
- Rackmount bracket
- 4 pin XLR power cable

Optical Fiber Converters

FiDO-4R

Quad Channel LC Optical Fiber to 3G-SDI

- 4 simplex or 2 duplex input connections (LC connector)
- 4 independent channels of SDI, HD-SDI, or 3G SDI
- 4K/UltraHD SDI over 4 fiber links
- Uses 5-20VDC power (DWP-U-R1 universal power supply included)
- 5 year warranty

\$1495 US MSRP*



FiDO-4T

Quad Channel 3G-SDI to LC Optical Fiber

- 4 simplex or 2 duplex output connections (LC connector)
- 4 independent channels of SDI, HD-SDI, or 3G SDI
- 4K/UltraHD SDI over 4 fiber links
- Uses 5-20VDC power (DWP-U-R1 universal power supply included)
- 5 year warranty

\$1495 US MSRP*



FiDO-4R-ST

Quad Channel ST Optical Fiber to 3G-SDI

- 4 simplex connections (ST connector)
- 4 independent channels of SDI, HD-SDI, or 3G SDI
- 4K/UltraHD SDI over 4 fiber links
- Uses 5-20VDC power (DWP-U-R1 universal power supply included)
- 5 year warranty

\$1495 US MSRP*



FiDO-4T-ST

Quad Channel 3G-SDI to ST Optical Fiber

- 4 SDI, HD-SDI or 3G Input
- 4 simplex connections (ST connector)
- 4 Independent channels of SDI, HD-SDI, or 3G SDI
- 4K/UltraHD SDI over 4 fiber links
- Uses 5-20VDC power (DWP-U-R1 universal power supply included)
- 5 year warranty

\$1495 US MSRP*



Optical Fiber Converters

FiDO-2R

Dual Channel LC Fiber to SDI Converter

- 2 simplex or 1 duplex connection (LC connector)
- 2 independent channels of SDI, HD-SDI or 3G

\$645 US MSRP*



FiDO-2T

Dual Channel SDI to LC Fiber Converter

- 2 simplex or 1 duplex connection (LC connector)
- 2 independent channels of SDI, HD-SDI or 3G

\$645 US MSRP*



FiDO-R

Single Channel LC Fiber to SDI Converter, with Dual SDI Outputs

- Simplex connection (LC connector)
- SDI, HD-SDI or 3G output
- Second SDI output (DA: same signal)

\$445 US MSRP*



FiDO-T

Single Channel SDI to LC Fiber Converter, with Looping SDI Output

- Simplex connection (LC connector)
- SDI, HD-SDI or 3G input
- Relocked loop through of SDI input

\$445 US MSRP*



Optical Fiber Converters

FiDO-R-SC

Single Channel SC Fiber to SDI Converter, with Dual SDI Outputs

- 2 simplex or 1 duplex connection (LC connector)
- SDI, HD-SDI or 3G output
- Second SDI output (DA: same signal)

\$445 US MSRP*



FiDO-T-SC

Single Channel SDI to SC Fiber Converter, with Looping SDI Output

- Simplex connection (SC connector)
- SDI, HD-SDI or 3G input
- Reclocked loop through of SDI input

\$445 US MSRP*



FiDO-R-ST

Single Channel ST Fiber to SDI Converter, with Dual SDI Outputs

- Simplex connection (ST connector)
- SDI, HD-SDI or 3G output
- Second SDI output (DA: same signal)

\$445 US MSRP*



FiDO-T-ST

Single Channel SDI to ST Fiber Converter, with Looping SDI Output

- Simplex connection (ST connector)
- SDI, HD-SDI or 3G input
- Reclocked loop through of SDI input

\$445 US MSRP*



Optical Fiber Converters

FiDO-TR

SDI/LC Fiber Transceiver

- Duplex connection (LC connector)
- SDI, HD-SDI or 3G input and output
- Bidirectional, dual channel fiber

\$645 US MSRP*



FiDO-4T-X

Quad Channel SDI to LC Fiber Converter for CWDM

- 4 simplex or 2 duplex connections (LC connector)
- 4 independent channels of SDI, HD-SDI or 3G SDI
- 4K/UltraHD SDI over 4 fiber links
- Choose from 9 pairs of CWDM wavelengths

\$1295 US MSRP*

Note: SFP modules are NOT included in purchase price.



FiDO-2T-X

Dual Channel SDI to LC Fiber Converter for CWDM

- 2 simplex or 1 duplex connection (LC connector)
- 2 independent channels of SDI, HD-SDI or 3G SDI
- Choose from 9 pairs of CWDM wavelengths

\$545 US MSRP*

Note: SFP modules are NOT included in purchase price.



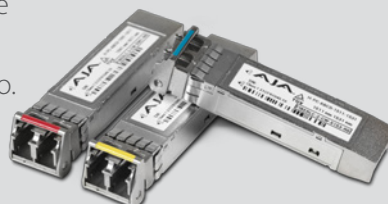
CWDM SFP Modules

Dual Channel LC Fiber Transmitters

Configure at time of purchase with one of the available CWDM SFP modules. See the Wavelength chart for more info.

\$695 US MSRP*

A convenient SFP configurator can be found at www.aja.com/config



Wavelength 1	Wavelength 2
1271 nm	1291 nm
1311 nm	1331 nm
1351 nm	1371 nm
1391 nm	1411 nm
1431 nm	1451 nm
1471 nm	1491 nm
1511 nm	1531 nm
1551 nm	1571 nm
1591 nm	1611 nm

openGear®



OG-3-FR

openGear Compatible Rackframe

openGear is an open architecture, modular frame system designed by Ross Video and supported by a diverse range of terminal equipment manufacturers, including AJA. The AJA OG-3-FR is a 2RU high openGear frame which is compatible with any AJA openGear card. The frame has

a 20 slot capacity with excellent cooling capabilities for high density applications and compatibility with advanced openGear connectivity options for supported cards.

\$1249 US MSRP*

OG-3G-AM

openGear 3G-SDI 8-Channel 24-bit AES Embedder / Disembedder

The OG-3G-AM is a state-of-the-art, openGear compatible, 8-Channel AES audio Embedder/Disembedder with support for 3G-SDI input and output up to 1080p/60. The OG-3G-AM automatically detects and configures to the input video standard. AES inputs are sample rate converted (SRC) to 48 kHz synchronous to the video input. Audio disembedding is always functional, providing 4 AES outputs. Audio embedding is user selectable, on a channel-pair basis, to either embed input AES audio or pass 3G-SDI input audio. Simple user controls allow channel enabling and mapping.

\$795 US MSRP*



Features:

- 3G-SDI Embedder / Disembedder in one board
- Input: 1 x 3G-SDI, BNC connector
4 x AES, BNC connector (2 channels per input)
- Outputs: 1 x 3G-SDI, BNC connector
4 x AES, BNC connector (2 channels per output)
- Local and Remote modes
- Pass or drop non-audio HANC packets
- Configure via USB and Mini-Config software or DIP switch
- Power: 5.0 watts
- Compatible with DFR-8321 and OG3 openGear frames

openGear®

OG-2x4-SDI-DA

openGear 2 x 4 3G-SDI Reclocking DA

The OG-2x4-SDI-DA is an openGear compatible, state of the art 3G-SDI distribution amplifier. The incoming 3G-SDI signals on the 2 input channels are reclocked and distributed to 4 3G-SDI outputs each, or alternatively can function as a 1 x 8-Channel DA, allowing the same signal to be sent to eight destinations simultaneously. This dual input capability allows double the number of DAs in limited frame space.

\$550 US MSRP*



Features:

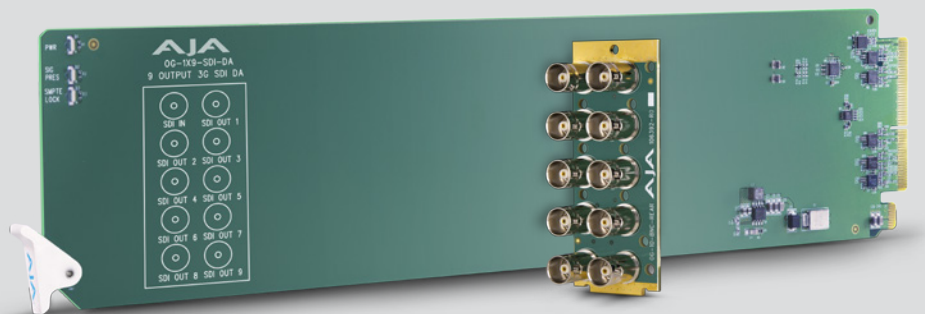
- Input: 2 x 3G-SDI, BNC connector (2 x 4 mode)
1 x 3G-SDI, BNC connector (1 x 8 mode)
- Outputs: 4 x 3G-SDI each DA, BNC connector (2 x 4 mode)
8 x 3G-SDI, BNC connector (1 x 8 mode)
- Automatic cable equalizer and automatic reclocker bypass
- Automatic detection and reclocking of 270Mb, 1.5Gb, and 3Gb SDI data rates
- Advanced jitter input tolerance and low jitter reclocked outputs
- Power: 2.0 watts max per card
- Hot swap capable
- Compatible with DFR-8321 and OG3 openGear frames

OG-1x9-SDI-DA

openGear 1 x 9 3G-SDI Reclocking DA

The OG-1x9-SDI-DA is a state of the art, openGear compatible, 3G-SDI distribution amplifier. The incoming SD, HD or 3G signal is reclocked and distributed to each of the 9 3G-SDI outputs, allowing the same signal to be sent to multiple destinations simultaneously.

\$495 US MSRP*



Features:

- Input: 1x SDI, BNC connector
- Outputs: 9 x SDI, BNC connectors
- Automatic detection and reclocking of 270Mb, 1.5Gb, and 3Gb SDI data rates
- Bypass mode: 125Mbps to 3Gbps – auto bypassing for non SMPTE rates
- "Input Present" and "Input SMPTE Lock" LEDs
- Power: 2 watts
- Hot swap capable
- Compatible with DFR-8321 and OG3 openGear frames



OG-FIBER-2T

openGear 2-Channel SDI to Fiber Converter

The OG-FIBER-2T is a state of the art, openGear compatible, 2-Channel 3G-SDI to fiber converter, enabling SDI signals to be extended up to 10km over standard single mode fiber optic cable. The SDI input is reclocked with best in class input jitter tolerance. The two SDI inputs are completely independent allowing different SDI rates to be carried on each channel.

\$645 US MSRP*



Features:

- Inputs: 2 x SDI, BNC connectors
- Outputs: 2 x single mode fiber, LC connectors
- Automatic detection and reclocking of 270Mb, 1.5Gb, and 3Gb SDI data rates
- Bypass mode: 125Mbps to 3Gbps – auto bypassing for non SMPTE rates
- "Input Present" and "Input SMPTE Lock" LEDs for each channel
- Wavelength: 1310 nm
- Optical Power: -5dBm typical
- Power: 2.5 watts
- Hot swap capable
- Compatible with DFR-8321 and OG3 openGear frames

OG-FIBER-2R

openGear 2-Channel Fiber to SDI Converter

The OG-FIBER-2R is a state of the art, openGear compatible, 2-Channel fiber to 3G-SDI converter, enabling SDI signals to be extended up to 10km over standard single mode fiber optic cable. The SDI input is reclocked with best in class input jitter tolerance. The two fiber inputs are completely independent allowing different SDI rates to be carried on each channel.

\$645 US MSRP*



Features:

- Inputs: 2 x single mode fiber, LC connectors
- Outputs: 2 x SDI, BNC connectors
- Automatic detection and reclocking of 270Mb, 1.5Gb, and 3Gb SDI data rates
- Bypass mode: 125Mbps to 3Gbps, auto bypassing for non SMPTE rates
- "Input Present" and "Input SMPTE Lock" LEDs for each channel
- Wavelength: 1260 - 1620 nm
- Optical Sensitivity: -20dBm typical
- Power: 2.5 watts
- Hot swap capable
- Compatible with DFR-8321 and OG3 openGear frames



OG-FIBER-T

openGear 1-Channel SDI to Fiber Converter

The OG-FIBER-T is a state of the art, openGear compatible, single channel 3G-SDI to fiber converter, enabling SDI signals to be extended up to 10km over standard single mode fiber optic cable. The SDI input is reclocked with best in class input jitter tolerance. The OG-FIBER-T also provides a coax output of the reclocked input.

\$445 US MSRP*



Features:

- Input: 1 x SDI, BNC connector
- Outputs: 1 x SDI, BNC connector, 1x single mode fiber, LC connector
- Automatic detection and reclocking of 270Mb, 1.5Gb, and 3Gb SDI data rates
- Bypass mode: 125Mbps to 3Gbps, auto bypassing for non SMPTE rates
- "Input Present" and "Input SMPTE Lock" LEDs
- Wavelength: 1310 nm
- Optical Power: -5dBm typical
- Power: 2.5 watts
- Hot swap capable
- Compatible with DFR-8321 and OG3 openGear frames

OG-FIBER-R

openGear 1-Channel Fiber to SDI Converter

The OG-FIBER-R is a state of the art, openGear compatible, single channel fiber to 3G-SDI converter, enabling a SDI signal to be extended up to 10km over standard single mode fiber optic cable. The fiber input is reclocked with best in class input jitter tolerance. The OG-FIBER-R provides two coax outputs (duplicate).

\$445 US MSRP*



Features:

- Input: 1 x single mode fiber, LC connector
- Outputs: 2 x SDI, BNC connectors (duplicate outputs)
- Automatic detection and reclocking of 270Mb, 1.5Gb, and 3Gb SDI data rates
- Bypass mode: 125Mbps to 3Gbps, auto bypassing for non SMPTE rates
- "Input Present" and "Input SMPTE Lock" LEDs
- Wavelength: 1260 - 1620 nm
- Optical Sensitivity: -20dBm typical
- Power: 2.5 watts
- Hot swap capable
- Compatible with DFR-8321 and OG3 openGear frames



OG-FIBER-TR

openGear SDI/Fiber Transceiver

The OG-FIBER-TR is a state of the art, openGear compatible SDI/Fiber transceiver. Both SDI to fiber and fiber to SDI conversions are supported. The fiber circuits enable SDI signals to be extended up to 10km over standard single mode fiber optic cable. The inputs are reclocked with best in class input jitter tolerance. Both signal paths are completely independent allowing different SDI rates to be carried on each channel.



\$645 US MSRP*

Features:

- Inputs: 1 x single mode fiber, LC, 1 x SDI, BNC
- Outputs: 1 x SDI, BNC, 1 x single mode fiber, LC
- Automatic detection and reclocking of 270Mb, 1.5Gb, and 3Gb SDI data rates
- Bypass mode: 125Mbps to 3Gbps, auto bypassing for non SMPTE rates
- "Input Present" and "Input SMPTE Lock" LEDs for each channel
- Optical Input Wavelength: 1260 - 1620 nm
- Optical Input Sensitivity: -20dBm typical
- Optical Output Wavelength: 1310 nm
- Optical Output Power: -5dBm typical
- Power: 2.5 watts
- Hot swap capable
- Compatible with DFR-8321 and OG3 openGear frames

Infrastructure

3G-AM

3G-SDI 8-Channel AES Embedder/Disembedder

The 3G-AM is an 8-Channel AES audio embedder/disembedder with support for 3G-SDI input and output up to 1080p 60. Audio disembedding is always functional, providing 4 AES outputs. Audio embedding is user selectable, on a channel pair basis, to either pass 3G-SDI input audio or to embed input AES audio from the breakout cable. AES inputs are sample rate converted to a 48 kHz rate synchronous to the video input. The 3G-AM automatically detects and configures to the input video standard.

\$795 US MSRP*



Features:

- 3G-SDI embedder/disembedder
- 8-Channel AES I/O
- Supplied breakout cables for balanced AES - XLR connectors
- Configure via USB port and supplied Mini-Config software
- DWP-U-R1 power supply included
- 5 year warranty

3G-AMA

3G-SDI Analog Audio Embedder/Disembedder

The 3G-AMA is a 4-Channel analog audio embedder/disembedder with support for 3G-SDI input and output up to 1080p 60. Audio disembedding is always functional, providing 4 analog outputs. Audio embedding is user selectable, on a channel pair basis, to either pass 3G-SDI input audio or to embed input analog audio from the breakout cable. Analog audio levels are selectable. The 3G-AMA automatically detects and configures to the input video standard.

\$795 US MSRP*



Features:

- 3G-SDI embedder/disembedder
- 4-Channel balanced analog audio I/O
- Supplied XLR breakout cable
- Configure via USB port and supplied Mini-Config software
- DWP-U-R1 power supply included
- 5 year warranty

Infrastructure

3GDA 1x6 3G-SDI Reclocking Distribution Amplifier

The 3GDA is a miniature, low cost 1x6 3G/HD/SD-SDI input, reclocking distribution amplifier. Featuring six separately buffered SDI outputs, the 3GDA provides automatic input detection, reclocking and cable equalization.

\$395 US MSRP*



Features:

- Compact SD/HD distribution
- Six separately buffered outputs
- Miniature size
- 3G cable equalization (1694 coax)
- SD: 270mb, 350m, HD: 1.5Gb, 200m
- 3G/HD/SD-SDI input, auto sensing
- Passes all ancillary data
- DWP-U-R1 power supply included
- 5 year warranty

3GM 3G/1.5G HD-SDI Multiplexer

The 3GM is a versatile and economical tool for interconnecting dual link 1.5G SMPTE 372M and 3G SMPTE 425M. 3GM is bidirectional, allowing dual 1.5G to 3G or 3G to dual 1.5G conversion. Additionally, 3GM's 3G HD-SDI output is configurable for SMPTE 425M type A or B. The 3GM can even convert 3G from/to type A or B. 3GM also provides a monitor output which is a single link SMPTE 292M 1.5G HD-SDI. The 3GM is also compatible with SMPTE 259M 270Mb SDI.

\$795 US MSRP*



Features:

- Compact 3G to/from 1.5G conversion
- SMPTE 425M-AB inputs, 3G outputs configurable to A or B
- Converts SMPTE 425M A to/from SMPTE 425M B
- Provides SMPTE 292 monitor output for dual 1.5G or 3G inputs
- Fully equalizing and reclocking with jitter attenuation
- If SMPTE 292M is input, all outputs are 1.5G SMPTE 292M
- DWP-U-R1 power supply included
- 5 year warranty

Infrastructure

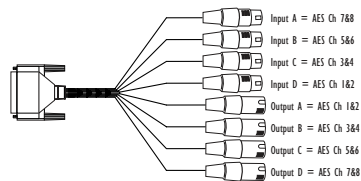
ADA4

4-Channel Bidirectional Audio A/D and D/A Converter

The ADA4 is a 4-Channel Bidirectional converter which can be configured as a 4-Channel A/D, a 4-Channel D/A, 2-Channel A/D and 2-Channel D/A, or an AES synchronizer. The ADA4 can accept an AES11, wordclock, or video sync/color black reference input for synchronization. Reference input and synchronization is automatic. Audio levels are configurable via DIP switch control.

\$390 US MSRP*

Supplied Breakout Cable



Features:

- 4 Simultaneous A/D and D/A, or AES Synchronizer
- Full time AES11 low jitter reference output
- Up to 4-Channels of balanced analog to AES/EBU audio
- Up to 4-Channels of AES/EBU to balanced analog audio
- Supplied XLR breakout cable
- AES11/wordclock/tri-level sync/
- Color black reference loop
- Adjustable audio levels
- Sample rate conversion between 96 kHz and 48 kHz DIP switch configuration
- DWP-U-R1 power supply included
- 5 year warranty

C10DA

Analog Video 1x6 Distribution Amplifier

The C10DA is a 1x6 Analog Distribution Amplifier with support for NTSC and PAL offering the ability to distribute multiple copies of the incoming signal or extend content of composite video with gain adjustment to compensate for long cable runs where needed. The C10DA can also be used to DA tri-level sync in an HD facility when a sync signal is fed externally into the Video Input.

\$175 US MSRP*



Features:

- Compact 1x6 analog DA
 - NTSC
 - PAL
- May be used to distribute tri-level sync when sync is fed into the Video Input for HD workflows
- 1 Analog, differential, 1 x BNC Input
- 6 analog, 6 x BNC outputs
- Gain: 3dB, -2dB, -1dB, 0dB, +1dB, +2dB, or +3dB, +/- 0.3dB
- DWP-U-R1 power supply included
- 5 year warranty

Infrastructure

D5DA

1x4 SD-SDI Distribution Amplifier

The D5DA is a multi-format, 1x4, SD-SDI Distribution Amplifier. The D5DA can be used as a low cost SDI DA or repeater. The SDI input is equalized for up to 300 meters of cable. In addition, the multi-standard feature allows the D5DA to automatically adapt to 143, 177, 270, or 360 Mb SDI inputs automatically.

\$250 US MSRP*



Features:

- Compact 1x4 equalizing SDI distribution amplifier
- Low cost
- Automatic multi-standard, 143/177/270 Mb
- Cable EQ to 300 meters
- Useful as a repeater
- DWP-U-R1 power supply included
- 5 year warranty

GEN10

HD/SD Sync Generator 10 Blackburst and Tri-level Sync Generator

The GEN10 is a cost effective and flexible SD/HD/AES sync generator. The GEN10 features 7 outputs including 2 groups of independently controlled SD/HD sync outputs and 1 AES-11 output. The SD outputs can be switched between Color Black and Color Bars. HD tri-level sync can be switched between 19 different HD formats including all that are in use today. The AES-11 output can be switched between SILENCE and TONE. All outputs are in sync with each other and are sourced from an accurate master time base.

\$345 US MSRP*



Features:

- HD bi-level/tri-level sync generation
- SD Color Black or Color Bars
- Two groups of independently switchable outputs allow simultaneous HD and SD sync generation
- AES-11 output switchable between silence and tone
- Multiple outputs can synchronize entire systems without requiring a sync DA
- DWP-U-R1 power supply included
- 5 year warranty

Infrastructure

HD5DA

1x4 HD/SD-SDI Distribution Amplifier

The HD5DA is a miniature, low cost 1x4 HD/SD-SDI distribution amplifier/repeater. Featuring four separately buffered HD/SD-SDI outputs, the HD5DA provides automatic HD cable equalization to 125 meters and automatically adapts to 143, 177, 270, 360 Mb, and 1.5Gb SDI.

\$195 US MSRP*



Features:

- Compact HD-SDI/SDI Distribution
- Four separately buffered HD-SDI/SDI outputs
- Auto equalization
- Beldon 1694 cable, HD 125m, SD 300m
- Acts as low cost repeater
- Automatic multi-standard 143/177/270 Mb, 1.5Gb
- Miniature size
- DWP-U-R1 power supply included
- 5 year warranty

HD10DA

1x6 HD/SD Distribution Amplifier

The HD10DA is a miniature, low cost 1x6 SD/HD (dual rate) reclocking distribution amplifier. Featuring six separately buffered HD-SDI outputs, the HD10DA provides automatic input cable reclocking and equalization to 125 meters.

\$345 US MSRP*



Features:

- Compact HD/SD-SDI distribution
- Six separately buffered outputs
- Miniature size
- Cable equalization (1694 coax). HD 125m, SD 300m
- HD-SDI or SDI input, auto sensing
- Bicolor LED indication of input lock and rate
- Passes all ancillary data
- No DIP switches or configuration required
- DWP-U-R1 power supply included
- 5 year warranty

SD Converters

D4E

SD-SDI to Composite Analog Converter

The D4E SD-SDI composite analog converter provides a low cost all digital conversion of SDI to analog NTSC or PAL. The D4E is useful for monitoring, level and phase checking, dubbing, etc. The D4E automatically adapts to NTSC or PAL video standards and outputs analog NTSC (525 line input) or PAL (625 line input). Pedestal and narrow/wide H/V blanking are user configurable via DIP switches. The D4E encodes the full dynamic range of input video: levels below black and above white are not clipped.

\$250 US MSRP*



Features:

- Lowest cost SD-SDI to NTSC/PAL available
- 1 SDI input, 2 composite Y/C analog outputs
- Automatic NTSC/PAL selection
- Built-in test pattern
- Ultra-miniature size mounts anywhere
- External DIP switch configuration
- DWP-U-R1 power supply included
- 5 year warranty

D5PSW

SDI Protection Switch

The D5PSW accepts 2 SD-SDI inputs, Primary and Secondary, and automatically switches to the Secondary input if the Primary input is not present or is not a valid SDI signal. An SDI input is considered valid if a proper SMPTE 259 stream is present. A LED indicator is Green if both Primary and Secondary are present, flashing green if the Primary is present but the Secondary is not present, and orange if the Secondary is present but the Primary is not. The D5PSW has 3 SDI outputs.

\$490 US MSRP*



Features:

- Dual SD-SDI input protection switch
- 3 SDI outputs
- Low cost
- Cable EQ to 300 meters
- Useful as a repeater and/or DA
- Multi-color LED status
- DWP-U-R1 power supply included
- 5 year warranty

SD Converters

D10CEA

SDI to Analog Audio and Video Converter

The D10CEA converts SD-SDI video with embedded audio to 10-bit component or composite analog video and 4-Channel balanced analog audio. The video outputs can be configured as YPbPr (Betacam or SMPTE, EBU N10), RGB, 1 composite or 1 Y/C (S-Video). The Quad Channel analog audio outputs can be wired in a balanced or unbalanced configuration. The 4 audio output channels can be selected as group 1-4 from SMPTE embedded audio. Audio level has 4 settings. Audio and video output connections are available on a 25 pin "D" subminiature connector a break out cable is supplied. All video/audio configuration is done by External DIP switch selection. This versatile, low cost, miniature monitoring solution also outputs two reclocked loop through SDI outputs.

\$595 US MSRP*



Features:

- SD-SDI to analog audio and video converter
- SDI with embedded audio input
- 2 reclocked, loop through SDI outputs
- 10-bit component or composite analog video outputs
- Quad channel balanced analog audio output
- Selectable audio level
- Selectable audio channel group
- External DIP switch configuration
- DWP-U-R1 power supply included
- 5 year warranty

Accessories

CMP

Converter Mounting Plate

Converter Mounting Plate: Mount most AJA Mini-Converters on industry standard wireless transmitter brackets, etc. Flexible mounting options allow direct attachment of converters to cameras, rigs, and battery plates. One bracket with two mounting screws included.

\$99 US MSRP*



DRM

Mini-Converter Rackmount Frame

The DRM is a 2RU high frame that can accommodate up to 12 of the smaller AJA Mini-Converters (D4 – D5 series and others of the same size), up to 6 of the larger AJA Mini-Converters (D10 or HD10 series), or a mixture of both. The DRM has a built-in 110/220V power supply with 12 connectors to provide 5V power directly to the Mini-Converters without the need for individual power supplies for each Mini-Converter.

\$590 US MSRP*
Optional Front Panel: \$100 US MSRP*

NOTE: Due to heat, size and power requirements, AJA's 3GM, ROI, 4K2HD and Hi5-4K Mini-Converters are not supported in the DRM frame.



The following AJA Mini-Converter types can be installed in the DRM:

- D-Series
- HD-Series
- C-Series

The DRM includes a built-in power supply with connections for up to 12 converters to eliminate the need for individual power supplies. An optional front panel is also available.

DWP-U-R1

Universal Power Supply

The DWP-U-R1 is an internationally compatible universal power supply included free of charge with all AJA Mini-Converters. With four interchangeable plug adapters, the DWP-U-R1 can be used virtually anywhere in the world. A molded, latching, circular connector with gold pins ensures the DWP meets the high reliability requirements of the professional video industry.

\$40 US MSRP*



Accessories

PWR-CABLE

Anton Bauer to AJA Mini-Converter power cable.

\$65 US MSRP*



P-TAP-CBL

P-Tap to AJA Mini-Converter Power Cable

\$45 US MSRP*



RMB

Rackmount Bracket

Easily mount AJA Mini-Converters to the side of a rack. One bracket with two mounting screws included. Also available in a 10 pack; RMB-10

\$7 US MSRP*





5 Year Warranty

AJA Video warrants that Converter products will be free from defects in materials and workmanship for a period of five years from the date of purchase.

About AJA Video Systems, Inc.

Since 1993, AJA Video has been a leading manufacturer of video interface and conversion solutions, bringing high quality, cost effective digital video products to the professional, broadcast and postproduction markets. AJA products are designed and manufactured at our facilities in Grass Valley, California, and sold through an extensive sales channel of resellers and systems integrators around the world. For further information, please see our website at www.aja.com