



AC15

Ultra Compact 2-way Loudspeaker System with 1 - 5.25" LF

Key Features:

- ▶ Ultra compact enclosure
- ▶ 135 mm (5.25 in) LF transducer
- ▶ 90° x 90° waveguide with 25 mm (1 in) dome tweeter
- ▶ Dual Neutrik NL4 connectors plus screw terminals
- ▶ Multiple Attachment Points for Ultimate Flexibility

Applications:

- ▶ Performing Arts Facilities
- ▶ Houses of Worship
- ▶ Sports Facilities
- ▶ Multi Media Spaces
- ▶ Retail Spaces
- ▶ Presentation Suites
- ▶ Educational Facilities
- ▶ Portable Audio-Visual Systems

The AC15 is an ultra-compact full-range loudspeaker system designed to provide maximum bandwidth and SPL in a single system package and yet be visually unobtrusive. The enclosure design allows for installation very close to walls and ceilings making it an ideal choice for under balcony, column, or wall mounting. The high frequency device is a 1" dome tweeter integrated into a newly designed 90° x 90° waveguide providing even coverage throughout the intended usage area. The combination exhibits smooth power response resulting in extremely natural voicing. The AC15 utilizes a 5.25" Symmetrical Field Geometry (SFG™) LF Transducer with a copper-clad aluminum edge wound 1.5" voice coil and a copper-capped pole piece that improves performance by reducing voice coil inductance and distortion.

The rugged multi-ply hardwood enclosure is designed to work in the vertical plane as well as in the horizontal plane. Mounting points are provided for an optional U-bracket and for an OmniMount® type bracket.

The rugged plywood enclosure features JBL's textured DuraFlex™ finish and is equipped with a heavy duty powder coated steel, foam-backed grille.



Specifications:

System:

Frequency Range (-10 dB):	80 Hz - 20 kHz
Frequency Response (+/-3 dB):	90 Hz - 18 kHz
Horizontal Coverage:	90°
Vertical Coverage:	90°
Directivity Factor (Q):	7 (avg. 500 Hz - 16 kHz)
Directivity Index (DI):	8 dB (avg. 500 Hz - 16 kHz)
System Sensitivity ¹ :	86 dB SPL/1W/1m
Rated Maximum SPL (1m) ² :	108 dB
System Nominal Impedance:	16 Ohms
Long-Term System Power Rating ³ : (Continuous/Program/Peak):	150 W / 300 W / 600 W
AES Standard Power Rating ⁴ :	225 W
Crossover Frequency:	3.3 kHz

Transducers:

Low Frequency Driver:	1 x JBL 225J, 135 mm (5.25 in) SFG™ driver with 38 mm (1.5 in) edge wound voice coil
High Frequency Driver:	1 x JBL 201J, 25 mm (1 in) voice coil dome tweeter
High-Frequency Waveguide:	Constant Coverage 90° x 90°

Physical:

Enclosure:	12 mm exterior grade multi-ply hardwood plywood
Suspension Attachments:	4 x M8 points; 1 top, 1 bottom, 2 rear. 2 x M6 bottom for OmniMount® 20.5 or MultiMount® MM-008-BT
Finish:	Black DuraFlex™ finish. White (-WH) available upon request.
Optional Weather Resistant Versions:	WRC & WRX not available for this model
Grille:	Powder coated 18 gauge perforated steel, acoustically transparent foam backing (grille cloth backing on white units)
Input Connectors:	Neutrik Speakon® NL4 (2 wired in parallel), plus CE-compliant covered barrier strip terminals. Barrier terminals accept up to 5.2 sq mm (10 AWG) wire or max width 9 mm (.375 in) spade lugs. NL4's +1/-1 in parallel with barrier strip (+2/-2 loop through).
Environmental Specifications:	Mil-Std 810; IPx3 per IEC529.
Dimensions (H x W x D):	241.3 x 150.3 x 177.8 mm (9.5 x 5.9 x 7.0 in)
Weight:	4.7 kg (10.5 lb)
Optional Accessories:	MTU-15 U-Bracket

¹On axis SPL measured in far field and referenced to 1 meter by inverse square law. Average from 300 Hz to 16 kHz.

²Calculated based on system sensitivity and continuous power handling.

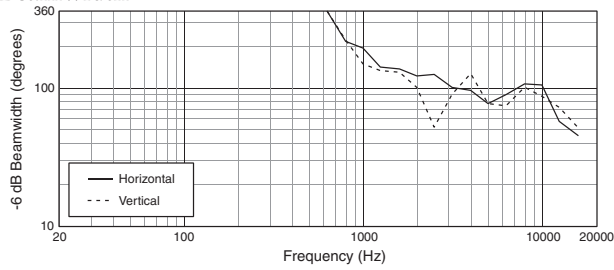
³IEC shaped pink noise, 6 dB crest factor, 100 hour duration.

⁴AES standard 2 hour duration, with IEC system noise spectrum.

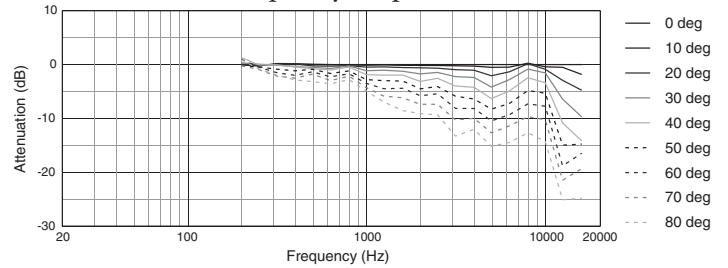
JBL continually engages in research related to product improvement. Changes introduced into existing products without notice are a routine expression of that philosophy.

▶ AC15 Ultra Compact 2-way Loudspeaker System with 1 - 5.25" LF

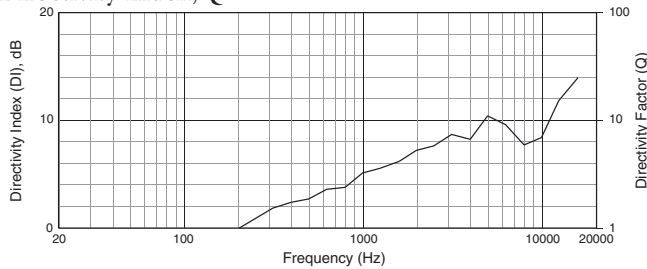
Beamwidth



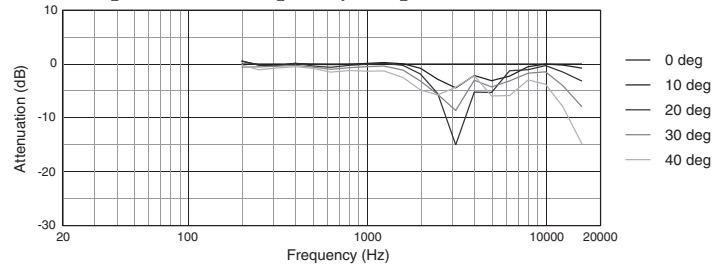
Horizontal Off-Axis Frequency Response



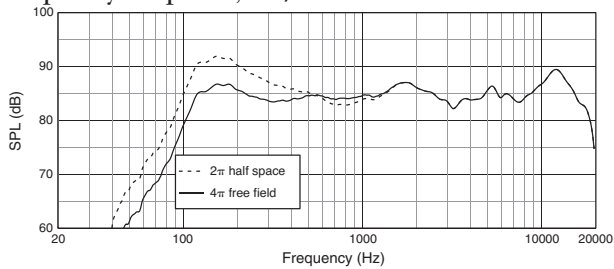
Directivity Index, Q



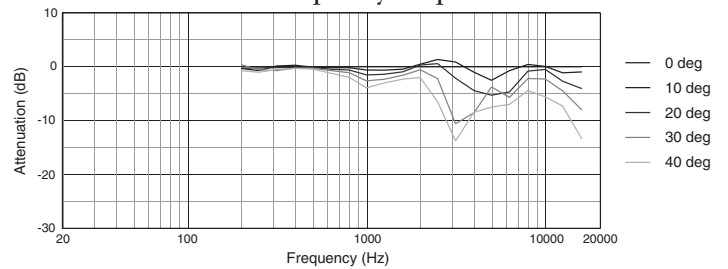
Vertical Up Off-Axis Frequency Response



Frequency Response, 1W/1m



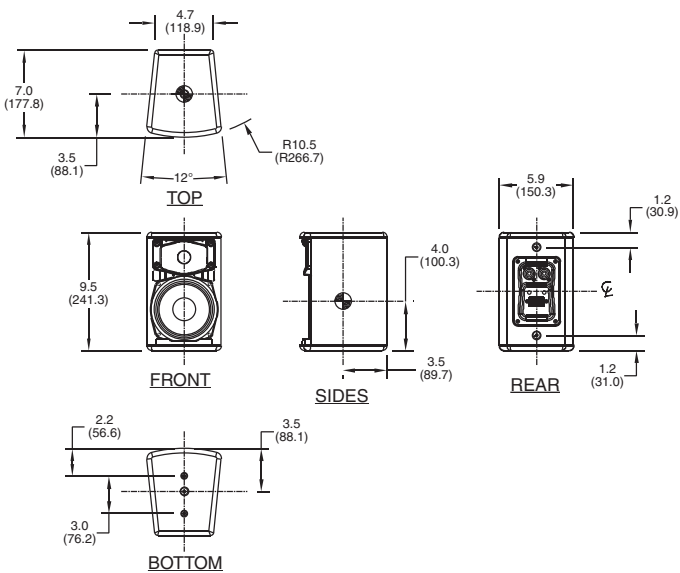
Vertical Down Off-Axis Frequency Response



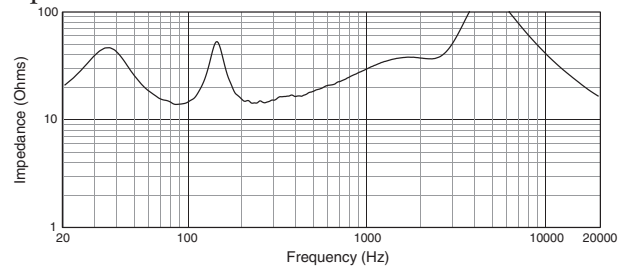
Dimensions

Dimensions in "in" (mm)

For more detailed dimensional information, refer to Application Data Sheet



Impedance



Measurements obtained in full passive crossover mode with no signal processing. Graphs are from unaltered measured data.

Attachment Points For Third Party Accessories:

Bottom: OmniMount 20.5 or MultiMount® MM-008-BT



JBL Professional
8500 Balboa Boulevard, P.O. Box 2200
Northridge, California 91329 U.S.A.

A Harman International Company
© Copyright 2008 JBL Professional

SS AC15
CRP 5M
05/13