

BigTouch

The giant all-in-one touch PC that demands an audience.



BigTouch

BigTouch combines the fun of a tablet with the productivity of a PC in a giant, fast, and fluid touch experience for your classroom or other shared work space.

Key Features

- Incredibly sharp 4K or 1080p resolution
- Powered by Windows 10 Pro (85", 80", or 65") or Windows 8, with an available Windows 10 upgrade (70" or 57")
- Ultra-responsive capacitive touch available on the 65" model
- Run all your Windows apps, even the older ones, in touch mode
- Highly customizable for your needs and your PC applications
- Intel Core i7 processor and fast solid state hard drive
- Wireless mouse and keyboard included

The Power of a PC at Your Fingertips

Maximize the touch experience on a large scale by adding the power of a PC with the InFocus BigTouch.

- 5-point touch display with intuitive Windows gestures to interact with your content
- Personalize the Start screen with tiles that connect to a person, app, website, folder or whatever else is important to you
- Familiar Windows desktop that you've used before
- Use your apps, get more apps in the Windows Store, and arrange them all the way you want
- Multi-task by snapping two apps side-by-side
- Enhanced features to easily connect to your networks, access files in the cloud, encrypt data, and more

The Tablet Experience...Magnified

Tablets are fun. Touch is intuitive. The InFocus BigTouch employs a beautiful display that allows that enjoyable experience, and your content, to be seen and shared.

- Brilliant 4K or 1080p HD displays show off your content with incredible brightness, color and clarity
- Multi-touch screen uses four sensors to deliver exceptionally accurate touches, swipes and gestures
- Windows gestures such as tap, slide, swipe, pinch, and rotate can be used to get a global view of everything on the screen and slide back and forth to find what you're looking for
- Wireless keyboard and mouse also included to easily control the display from your seat



INF5711

57"
1080p
Windows 8.1 Pro

INF6511

65"
1080p
Windows 10 Pro

INF7011

70"
1080p
Windows 8.1 Pro

INF8012

80"
UHD 4K
Windows 10 Pro

INF8511

85"
UHD 4K
Windows 10 Pro

Powered by Windows 10

BigTouch is built on Windows 10, offering the performance and flexibility you need for all of your applications. Windows 10 provides an elegant interface that leverages familiar aspects of previous Windows operating systems so that everyone can intuitively use it, plus new features that you'll love.

- The Windows Start menu is back in an expanded form, so you can dive in immediately
- New Battery Saver feature automatically conserves power
- Windows 10 comes standard on the 65-, 80-, and 85-inch models
- Available as a software upgrade on the 57- and 70-inch models



Bring Your Display to Life with 4K

The 80- and 85-inch BigTouch models now feature 4K resolution for an incredibly sharp, vivid picture. Boost the impact of your content and make every meeting or presentation more engaging, informative, and memorable with 4K.

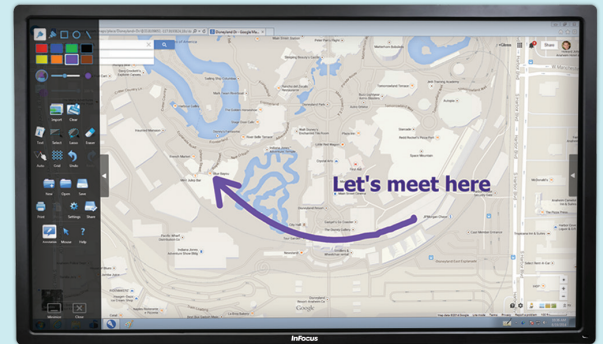
- More pixels mean more detail and depth for amazingly life-like images
- Enhanced color rendering
- Presenters benefit from crisp, clear images up close
- Audiences enjoy vibrant, detailed images, even from the back of a conference room

Whiteboard Like a Pro

Add our optional BigNote whiteboarding app to turn your BigTouch into the best digital whiteboard available.

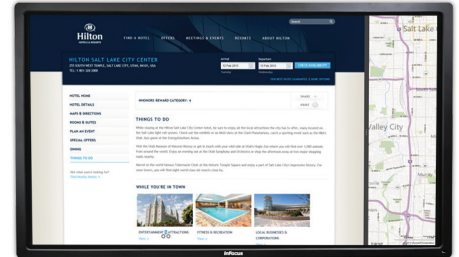
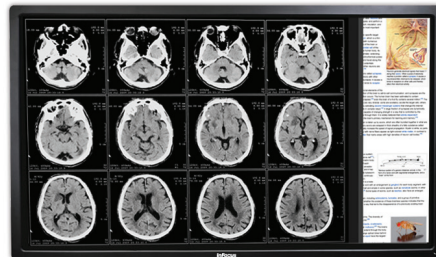
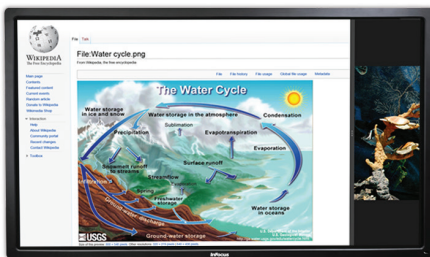
- Wide assortment of pens, colors and shapes
- Whiteboard on up to 10 square feet of space
- Annotate on screen and save the changes
- BigNote files are cross-compatible with Mondopad's whiteboard app

[BigNote software \(INS-BIGNOTE\) pictured here.](#)



How Would You Use Your BigTouch?

The form factor of BigTouch combined with the user experience and flexibility of a Windows PC means its use is only limited by your imagination.



Education

Higher education and primary and secondary schools can benefit from BigTouch in administrative offices or in the classroom. Its bright, engaging display keeps students' attention and Windows 8 is intuitive and familiar for students, staff and IT.

- In classrooms for giving and preparing lessons
- Access and display content from the web and the cloud
- In administrative offices as a shared PC
- Flexible and secure for IT to manage

Medical

The high definition display and ease of use of BigTouch make it a great fit for hospitals, clinics, labs, and administrative offices.

- In waiting rooms for education and/or self service
- For accessing and analyzing information, such as imaging
- For patient education, such as explaining imaging, video, and other patient care info
- At nursing stations as a shared PC

Hospitality

Hotel lobbies can greatly benefit from BigTouch to help their guests help themselves.

- Learn about the hotel's amenities
- Browse maps of the hotel and of the surrounding area
- View hotel restaurant menus and make reservations
- Find fun things to do at the hotel and in the area

Specifications*

| PC | INF5711 | INF6511 | INF7011 | INF8012 | INF8511 |
|--------------------|--|----------------|-----------------|------------------------------------|---------|
| Processor | Intel® Core i7-4770T, Q87 chipset | | | Intel® Core i7-6700T, Q170 chipset | |
| Memory | 8 GB of RAM | | | | |
| Hard Drive | SSD 120GB | SSD 128 GB | SSD 120GB | SSD 256GB | |
| LAN (2x) | 802.3 10/100/1000 Base-T with Wake on LAN | | | | |
| Wi-Fi | Dual band 802.11 a/b/g/n MIMO PCIe half mini card, 2.4 GHz with Intel, AMT support | | | | |
| Input Connections | USB 3.0 Type-A x2 (on PC), Ethernet (RJ45 x 2), 3.5mm audio input (stereo) | | | | |
| Output Connections | HDMI out | | | DisplayPort 1.2 out | |
| Bluetooth | 4.0 | | | | |
| Operating System | Windows 8.1 Pro | Windows 10 Pro | Windows 8.1 Pro | Windows 10 Pro | |

DISPLAY

| Size | 57" diagonal | 65" diagonal | 70" diagonal | 80" diagonal | 85" diagonal |
|---------------------------|---|--|---|--|---|
| Resolution | Full HD (1920 x 1080) | | | 4K (3840 x 2160) | |
| Refresh Rate | 120 Hz | | | | |
| Viewing Angle | 176° | 178° | 176° | | |
| Technology | LED edge-lit LCD | | | | |
| Video Input Compatibility | Full NTSC, 480i, 480p, 720p, 1080i, 1080p | | | Full NTSC, 480i, 480p, 720p, 1080i, 1080p, 4K | |
| Data Input Compatibility | VGA (640x480), SVGA (800x600), XGA (1024x768), SXGA (1280x1024), SXGA+ (1400x1050), UXGA (1600x1200), WXGA+ (1440x900), WSXGA+ (1680x1050), WXGA (1280x800), WUXGA (1920x1200) | | | | |
| Input Connections | HDMI x 2, VGA (HD15 VESA), RS232, 3.5mm stereo mini-jack, RCA stereo audio in, 3.5mm line-in audio (mono), USB Type-A x5 (4 on front, 1 on top), USB Type-B (for touch control) | HDMI x 4, VGA (HD15 VESA), component, RS232, 3.5mm line-in audio (mono), RCA stereo audio in, 3.5mm microphone in, USB Type-A x5 (4 on front, 1 on top) USB Type-B (for touch control) | HDMI x 2, VGA (HD15 VESA), RS232, 3.5mm stereo mini-jack, RCA stereo audio in, 3.5mm line-in audio (mono), USB Type-A x5 (4 on front, 1 on top), USB Type-B (for touch control) | DisplayPort 1.2, HDMI 2.0 x2 (rear), HDMI 1.4 x2 (rear and front), VGA, component, 3.5mm line-in audio (mono), RCA stereo audio in, RS232 serial, USB Type-A x5 (4 on front, 1 on top), USB Type-B (for touch control) | Rear: DisplayPort 1.2, HDMI 2.0 x2, HDMI 1.4, VGA, Component, 3.5mm line-in audio (mono), RCA stereo in, RS232 serial, USB 2.0 Type-B (for touch control) Front: USB 3.0 Type-B (for touch control), USB 3.0 Type-A x4, HDMI 1.4 Top: USB 3.0 Type-A (used by camera) |
| Output Connections | RCA audio stereo (L/R) out | | | | |
| Touch Screen | Edge-to-edge quad camera multi-touch system with support for 5 point Windows gestures | Edge-to-edge 10-point projected capacitive touch | Edge-to-edge quad camera multi-touch system with support for 5 point Windows gestures | | |
| Speakers (Integrated) | Stereo 7W x2 | Stereo 10W x2 | Stereo 7W x2 | | |
| Power | AC 100 to 240V, 50/60Hz | | | | |

SYSTEM

| | | | | | |
|----------------------|--|--|--|--|---|
| Accessories Included | Wireless keyboard (where allowed), wireless mouse (where allowed), cleaning cloth, VGA cable, USB cable, security screws with removal tool, power cord, remote control, quick setup guide, feet/table stand assembly (feet only included with INF5711) | | | | |
| Warranty | 1 Year | | | | |
| Product Weight | 125.5 lbs / 57 kg | 123.5 lbs / 56 kg | 155 lbs / 70.3 kg | 172 lbs / 78 kg | 232.6 lbs / 101.5 kg |
| Product Dimensions | 56.7 x 3.7 x 34.9 in / 1388 x 91 x 856 mm | 59.8 x 3.2 x 35.3 in / 1520 x 896 x 81 mm | 65.7 x 4 x 39 in / 1669 x 102 x 991 mm | 75 x 4.7 x 44.4 in / 1905 x 119 x 1128 mm | 78.3 x 4.4 x 46.7 in / 1988 x 112.1 x 1186 mm |
| Shipping Weight | 154 lbs / 70 kg | 154.5 lbs / 70.1 kg | 171 lbs / 77.6 kg | 202 lbs / 91.6 kg | 264.6 lbs / 120 kg |
| Shipping Dimensions | 63.5 x 10 x 42.5 in / 1613 x 254 x 1080 mm | 69 x 10.6 x 44.4 in / 1752 x 270 x 1128 mm | 73 x 10.5 x 49 in / 1854 x 267 x 1245 mm | 83.5 x 10.5 x 53.5 in / 2121 x 267 x 1359 mm | 88.1 x 12.2 x 56.2 in / 2239 x 311 x 1427 mm |
| Operating Conditions | 41 to 95°F at 0 to 10K ft / 5 to 35°C at 0 to 3,048 m | | | | |
| Noise | <40dBA @ 77°F / 25°C | | | | |
| Energy Star | 5.1 for display and PC | | | | |

* Product specifications, terms, and offerings are subject to change at any time without notice.

Accessories

BigNote Whiteboard Software (INS-BIGNOTE)
 Mondopad Upgrade Kit (INSMPWIN8SW)
 RealCam Pan/Tilt/Zoom Camera (INA-PTZ-3)
 Camera with Microphone Array (HW-CAMERA-2)
 Soundbars (HW-SOUNDBAR-4)
 Wall Mount (INF-WALLMNT2, INF-WALLMNT3)
 Floor Stand for INF5711 only (INF-FLRSTND)
 Mobile Carts (INF-MOBCART, INF-MOBCARTPRO-B, INF-MOBCARTPRO-S, INF-MCART-PL)
 Deluxe Mobile Cart with PTX Mount and Accessory Shelf (INA-MCARTDX)

Lift Assist Mounts (INA-MNTBB70, INA-MNTBB95)
 Floor Support for Lift Assist Wall Mount (INA-SUPPORTBB)
 Mobile Cart for Lift Assist Mount (INA-CARTBB)
 VESA Interface Bracket (INA-VESABB)
 Extended warranties
 57-inch (EPWPRE57BT1, EPWPRE57BT2)
 65-inch (EPWPRE65BT1, EPWPRE65BT2)
 70-inch (EPWPRE70BT1, EPWPRE70BT2)
 80-inch (EPWPRE80BT1, EPWPRE80BT2)
 85-inch (EPWPRE85BT1, EPWPRE85BT2)