

PWPBT67 In-Wall Bluetooth Audio Control Receiver Home Theater Wall Plate Amplified System

Operation:

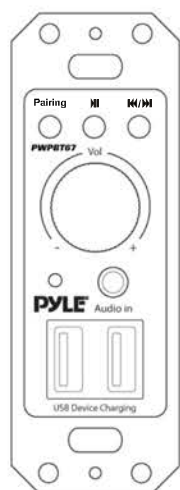
After installation, power on the unit by connecting the DC 15V wall power adapter. Once connected, the Bluetooth audio source's LED will continuously blink blue indicating the unit is ready to be paired with your Bluetooth device. The blue LED will continue to blink until the unit successfully pairs with a compatible Bluetooth device (If a Bluetooth connection is not made within 2 minutes the unit will automatically power off. Simply reconnect the DC power adapter to retry the Bluetooth pairing process.)

The Bluetooth Wall Plate's model number, 'PWPBT67' will appear as the Bluetooth network name when you scan for Bluetooth devices. Once successfully paired, the blue LED will shine solid indicating the unit is ready to wirelessly transmit audio via Bluetooth.

Use the Play/Pause, Forward and Reverse buttons to control audio playback settings on the Bluetooth audio source. Use the rotary volume control knob to adjust levels. This knob also services as the POWER switch (turn counter-clockwise until you hear a 'click' and the unit is powered off).

Use the RCA (L/R) connector jacks on the audio output wall plate to connect the system to speakers.

Connect external devices via the aux (3.5mm) input to stream audio from your connected device, through the connected speakers on the audio output wall plate.

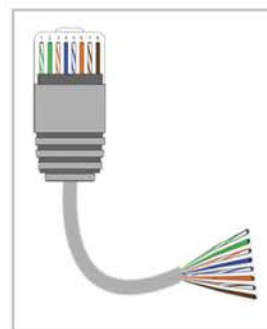


Bluetooth Audio Source

Power +15V
GND/-12V
Vref
R-Line Out
L-Line Out

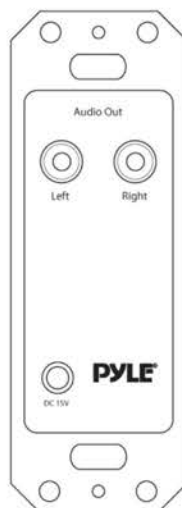


*Optional RJ45 Connection



Audio Output

Power +15V
GND/-12V
Vref
R-Line Out
L-Line Out
RJ45



White / Green	R_Out
Green	L_Out
White / Orange	+15V
Blue	SGND
White / Blue	+15V
Orange	GND
White / Brown	GND
Brown	Verf

PYLE[®]
PyleAudio.com