



# Distagon T\* 2,8/15



## Features

- Fast f/2.8 aperture
- Precise manual focusing
- Robust full-metal construction
- Identical color reproduction of all models
- For industrial cameras with F-Mount up to sensor sizes of 24x36 mm or 43mm line sensors.
- 110° angular field

## Camera Mounts

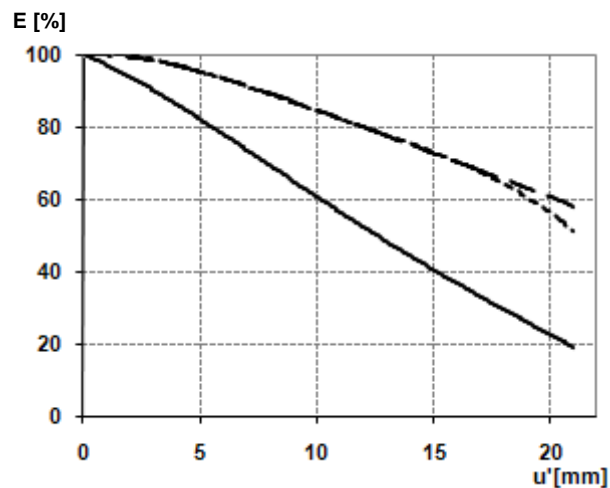
Available for other camera mounts such as EF, or M42 screw mount.





# Distagon T\* 2,8/15

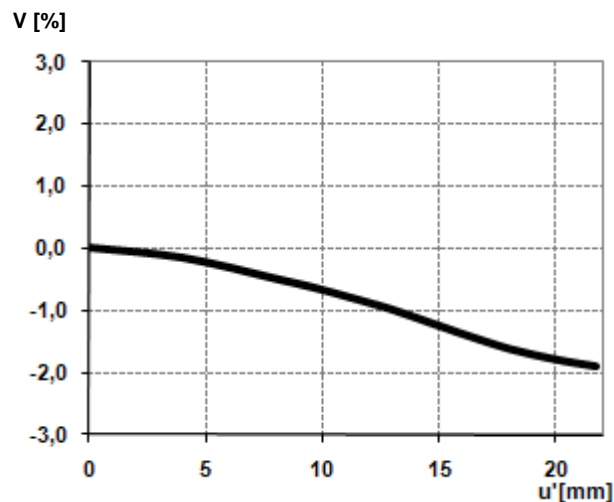
## Relative Illuminance\*



The relative illumination shows the decrease in image brightness from the image center to the edge in percent.

— f-number = 2.8  
... f-number = 5.6  
--- f-number = 8

## Relative Distortion\*



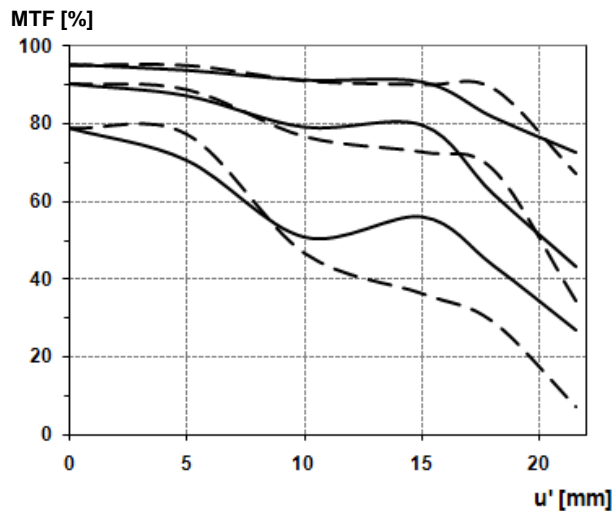
The relative distortion shows the deviation of the actual image height from the ideal one in percent.

*\*Data for infinite focus setting*



# Distagon T\* 2,8/15

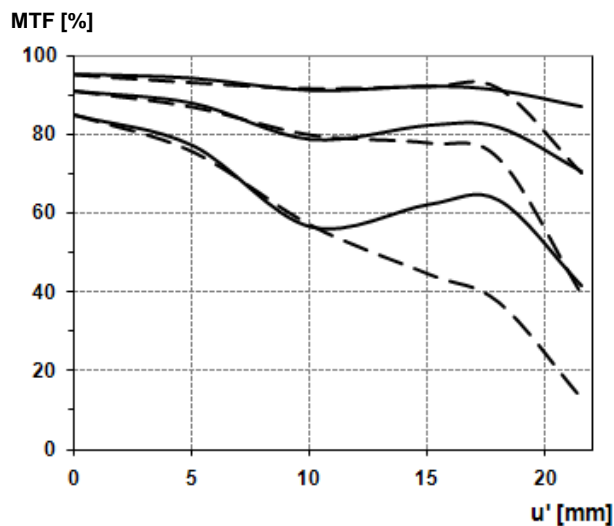
## MTF Charts\*



The Modulation Transfer (MTF) as a function of image height ( $u$ ) and slit orientation (sagittal, tangential) has been measured with white light at spatial frequencies of  $R = 10, 20$  and  $40$  cycles/mm.

f-number = 2.8

— Sagittal  
... Tangential



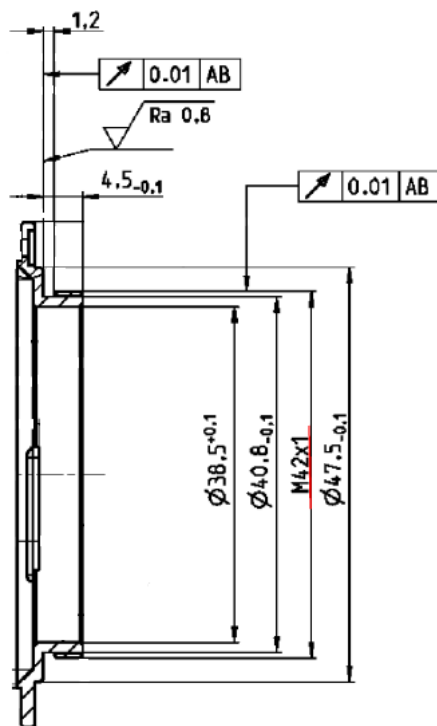
f-number = 5.6

— Sagittal  
... Tangential

*\*Data for infinite focus setting*



# Distagon T\* 2,8/15



M42 Mount for 45,5 mm Flange Focal Distance

*The diameter of the camera/lens adapter must not exceed 55 mm at the lens side!*