

(Front View) SD72W (Rear View)

SD72W SPECIFICATIONS

Table with 2 columns: Specification Name and Value. Includes sections for general specifications, Thiele-Small parameters, and transformer specifications.

FEATURES

- 10oz dual cone speaker provides familiar response & performance
• Quality 5 watt-dual voltage transformer
• Attractive CRS white powder coat baffle
• Individually packaged for stocking & ordering convenience

APPLICATION

The SD72W is an aggressively priced, high quality speaker/baffle transformer package suitable for most any paging or background application including retail stores, restaurants, schools and other institutional facilities.

GENERAL DESCRIPTION

The speaker used in the SD72W is the next generation of Atlas high performance cone loudspeakers, very similar to the preceding C-Series speakers. The similarity in the sonic qualities ensures that contractors and designers who have worked with the Atlas Sound C-Series in the past will know exactly what to expect when they use the SD72W.

ARCHITECT & ENGINEER SPECIFICATIONS

Unit shall be Atlas Sound 8" loudspeaker Model SD72W utilizing line matching transformer and white CRS baffle. It shall have a (10oz.) ceramic magnet and a seamless cone. Frequency response range shall be 45Hz-19kHz (nominal). Sensitivity shall be 97dB 1W/1M.

Specifications subject to change without notice



1601 JACK MCKAY BLVD. / ENNIS, TEXAS 75119 U.S.A.
TELEPHONE: (800) 876-3333 / FAX (800) 765-3435

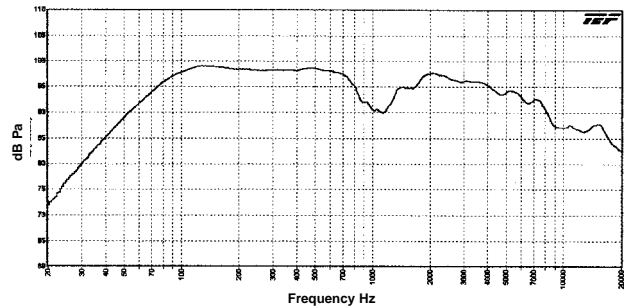
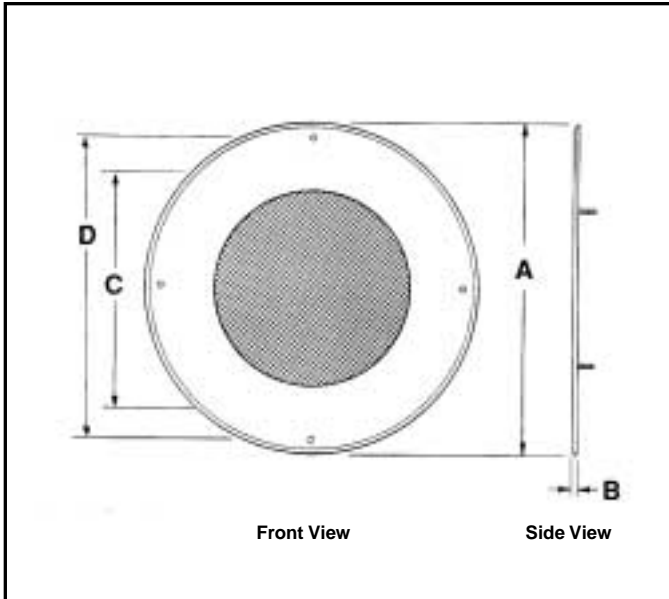
AtlasSound.com

SD72W BAFFLE INFORMATION							
MODEL	DIMENSIONS				MOUNTS		OPTIONAL TILEBRIDGE
	DIA. (A)	PROJECTS (B)	(C)*	(D)**	ENCLOSURE	(OR) MTG. RING	
SD72W	12 $\frac{3}{4}$ " (324mm)	$\frac{1}{4}$ " (6mm)	7 $\frac{5}{8}$ " (194mm)	11 $\frac{1}{4}$ " (286mm)	(EZ)95-8 Series, T95-8 Series, EZ96-8, CS95-8(NS), 199-8, Q408, 96-8 Series [▲]	75-8(E1)(E2), 76-8(E1)(E2), P77-8, P78-8	81-8R(S) EQ81s [▲]

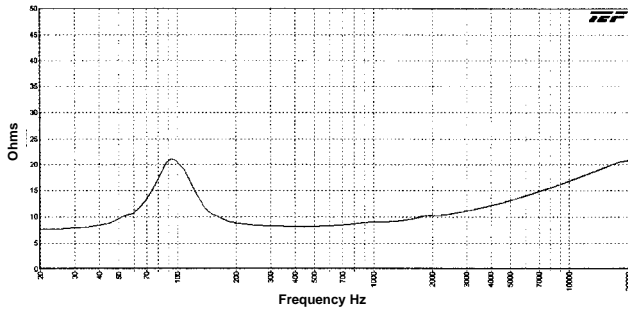
* (C) Speaker mounting stud pattern.

** (D) Baffle mounting hole pattern.

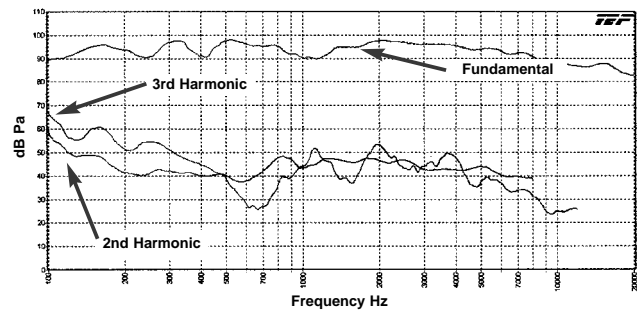
▲ EQ81 tile bridge works only with 96-8 Series enclosures.



SD72W Frequency Response
(Transformer Bypassed)

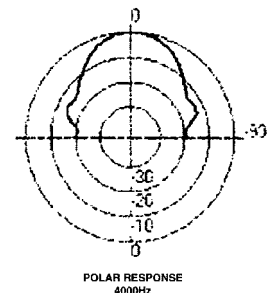
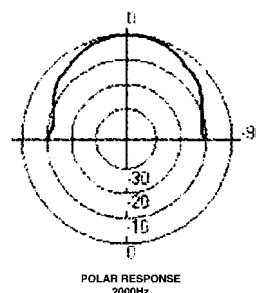
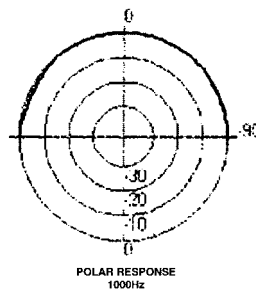
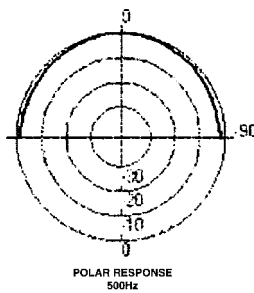


SD72W Impedance
(Transformer Bypassed)



Fundamental vs. 2nd & 3rd Harmonics
(Transformer Bypassed)

SD72W OCTAVE BAND POLARS



Specifications subject to change without notice



1601 JACK MCKAY BLVD. / ENNIS, TEXAS 75119 U.S.A.
TELEPHONE: (800) 876-3333 / FAX (800) 765-3435

AtlasSound.com