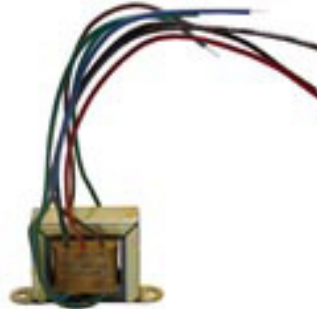


Model TLM Series Line Matching Transformers

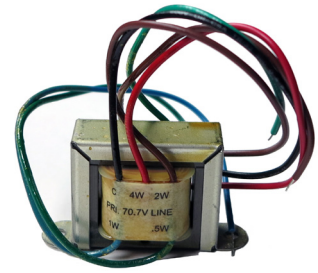
Lowell transformers have been developed for high quality audio systems and general purpose paging applications where wide frequency response, low insertion loss, and high power handling are critical considerations. The TLM series features the industry standard open-housing design and color-coded leads for fast installation.

A&E Specifications

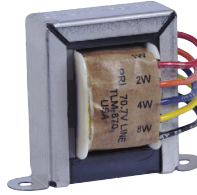
The line matching transformer shall be Lowell Model _____ (TLM-425, TLM-425T, TLM-470, TLM-470T, TLM-870, TLM-25T). Primary voltage shall be _____ (70V, 25V) with a power rating of _____ (8W, 4W). All taps shall have color-coded leads with primary taps available at _____ (4/2/1/0.5, 8/4/2/1) watts and secondary impedance taps available at _____ (8,4) ohms. Frequency response shall be _____ (60Hz-15kHz ± 1 dB, 50Hz-15kHz ± 1 dB) with insertion loss not to exceed 0.8 dB.



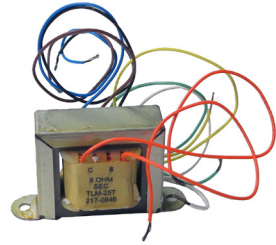
Model TLM-425



Model TLM-470



Model TLM-870



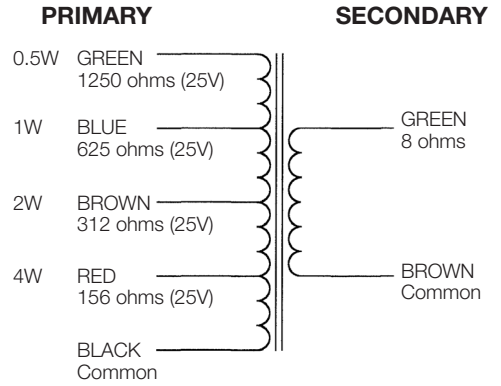
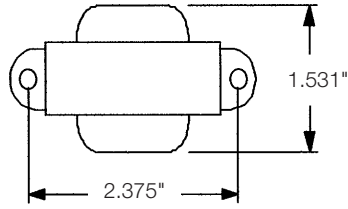
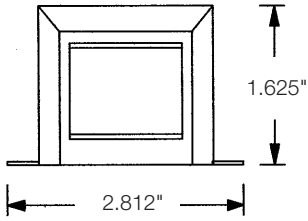
Model TLM-25T

Model No. Summary

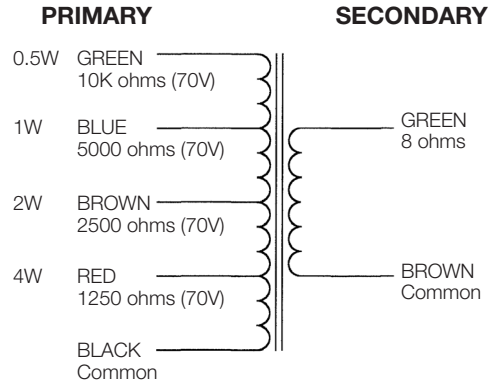
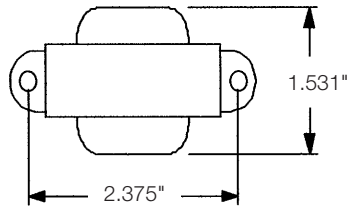
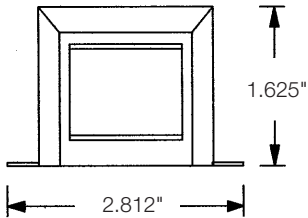
Model No.	Primary Voltage	Power Rating	Primary Taps	Secondary Impedance	Core Size (in)	Insertion Loss	Frequency Response	Lead Length (in)	Leads
TLM-425	25V	4W	4, 2, 1, 0.5W	8 ohms	.625 X .625	.8dB	60Hz-15kHz ± 1 dB	8	std
TLM-425T	25V	4W	4, 2, 1, 0.5W	8 ohms	.625 X .625	.8dB	60Hz-15kHz ± 1 dB	8	Teflon*
TLM-25T	25V	4W	4, 2, 1, 0.5W	8 ohms	.625 X .625	.8dB	60Hz-15kHz ± 1 dB	8	Teflon*
TLM-470	70V	4W	4, 2, 1, 0.5W	8 ohms	.675 X .675	.8dB	60Hz-15kHz ± 1 dB	8	std
TLM-470T	70V	4W	4, 2, 1, 0.5W	8 ohms	.675 X .675	.8dB	60Hz-15kHz ± 1 dB	8	Teflon*
TLM-870	70V	8W	8, 4, 2, 1W	8,4 ohms	.75 X .75	.8dB	50Hz-15kHz ± 1 dB	8	std

* Teflon-coated

Model TLM-425, TLM-425T, TLM-25T



Model TLM-470, TLM-470T



Model TLM-870

