

PowerLite® 1975W Wireless WXGA 3LCD Projector



Stream wirelessly from tablets or smartphones to your widescreen projector.

3x Brighter Colors¹, and reliable performance — 3LCD, 3-chip technology

One measurement of brightness is not enough — look for both high color brightness and high white brightness. The PowerLite 1975W has:

Color Brightness — 5000 lumens²

White Brightness — 5000 lumens²

Brilliant widescreen images up to 300" — native WXGA (1280 x 800) resolution and DCDi[®] video processing; also features a 1.6x optical zoom

Turn your projector into a smart display — get instant access to movies, games and more from MHL[®]-enabled smartphones and tablets; simultaneously charge your device when it's plugged into the projector

2x HDMI[®] connectivity — for high-definition video and audio

Split Screen — simultaneously project two images, video or still, side by side, from two different sources³

Remote network monitoring and control — plus Message Broadcasting and built-in schedule functions



Stream wirelessly from tablets or smartphones to your widescreen projector.

The PowerLite 1975W brings brilliant image quality from your tablet or smartphone to your boardroom with WXGA resolution and DCDi video processing. Offering 3x Brighter Colors¹ than competitive models, Epson® 3LCD projectors ensure vivid images. With 5000 lumens of color brightness and 5000 lumens of white brightness², the 1975W shines bright. Stream content from MHL-enabled devices. Or, wirelessly share 1080p content via Miracast® or WiDi. Now, it can look as good on the screen as on your device — all up to 300".

Series at a glance



Model	PowerLite 1975W	PowerLite 1985WU
Color Brightness	5000 lumens ²	4800 lumens ²
White Brightness	5000 lumens ²	4800 lumens ²
Resolution	WXGA (1280 x 800)	WUXGA (1920 x 1200) Full HD
Wireless	Yes	Yes

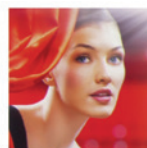
Amazing image quality



3x Brighter Colors with Epson¹

Brilliant image quality requires high color brightness (color light output), and Epson 3LCD projectors have 3x Brighter Colors than leading competitive projectors¹.

One brightness measurement (lumens) is not enough. A projector's specification needs to show both high color brightness and high white brightness. If color brightness is lower than white brightness, images may be dark, dull and lose detail. If not provided, be sure to ask for a projector's color brightness specification.



EPSON

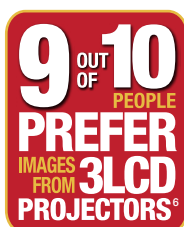
High color brightness and high white brightness



COMPETITOR

Color brightness significantly lower than white brightness

Actual photographs of projected images from an identical signal source. Price, resolution and white brightness are similar for both projectors (Epson 3LCD and 1-chip DLP competitor). Both projectors are set to their brightest mode.



3LCD, the #1 projection technology in the world, has:

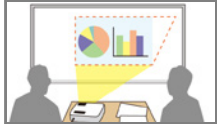
- Both high color brightness and high white brightness
- 3 chips for up to 3x Brighter Colors⁴ than 1-chip DLP projectors
- 25% lower power consumption for lower energy costs⁵
- 25 years of road-tested reliability
- A nationwide study reveals that 9 out of 10 people prefer images from 3LCD projectors⁶



Easy to use



Without horizontal image correction



With horizontal image correction

Simple Setup Suite from Epson

Epson projectors offer a suite of innovative features that ensure flexible placement and fast, easy setup.

- **2x HDMI** — use with multiple high-definition A/V devices. (Compatible with the latest laptops, Blu-ray Disc® and media players)
- **USB Plug 'n Play instant setup** — use a USB cable (not included) to instantly project content. View your projected presentation on the screen and your computer simultaneously
- **1.6x optical zoom** — offers great positioning flexibility to fit large or small rooms
- **Quick, convenient control**
 - Instant Off® — quickly power down the projector, pack up and go
 - Sleep Mode (A/V Mute) — pause your presentation without turning the projector off
 - Direct Power Off/On — control your projector with the flip of a switch

Easy to connect and collaborate



Advanced connectivity to a variety of devices

Stream 1080p content and mirror your mobile device.

- **MHL** — the latest in connectivity
 - Display content with MHL-enabled smartphones, tablets and Roku® devices⁷
 - Use the projector remote to control MHL-enabled devices
 - Charge your MHL-enabled device when it's plugged into the projector
 - Get instant access to movies, games and more
- **Wireless projection**
 - Miracast for any smartphone, tablet or PC with an Android™ operating system
 - WiDi for Intel® devices like smartphones, tablets or PCs

Remote management and control

Easily monitor and control networked Epson projectors using the included EasyMP® software.

- Schedule remote power on/off functionality; saves energy, money and time
- Check the status of each projector as part of your maintenance routine
- Remotely access maintenance alerts for connected projectors
- Crestron RoomView® enabled — monitor and control your projector with your existing RoomView software

With Multi-PC Projection and Epson's Moderator feature®, the moderator can:

- Display up to four different device screens simultaneously and control which device screens to display
- Connect to up to 50 Windows®, Mac®, iOS® or Android devices
- Encourage and control collaboration; perfect for comparing work side by side



Specifications

Projection System 3LCD, 3-chip technology
Projection Method Front/rear/ceiling mount
Driving Method Poly-silicon TFT Active Matrix
Pixel Number 1,024,000 dots (1280 x 800) x 3
Color Brightness² Color Light Output: 5000 lumens
White Brightness² White Light Output: 5000 lumens
Aspect Ratio 16:10
Native Resolution 1280 x 800 (WXGA)
Supported Maximum Transferred Resolution 1920 x 1080 (1080p)
Resize 640 x 480, 800 x 600, 1280 x 1024, 1400 x 1050
Lamp Type 280 W UHE
Lamp Life⁹
 Up to 4000 hours (ECO Mode)
 Up to 3000 hours (Normal Mode)
Throw Ratio Range 1.38 (Zoom:Wide), 2.28 (Zoom:Tele)
Size (projected distance)
 30" – 300" (0.86 – 8.95 m) (Zoom:Wide)
Keystone Correction (Automatic)
 Vertical: ± 30 degrees
 Horizontal: ± 20 degrees
USB Plug 'n Play Projector is compatible with PC and Mac computers
Contrast Ratio Up to 10,000:1
Color Reproduction Up to 1 billion colors

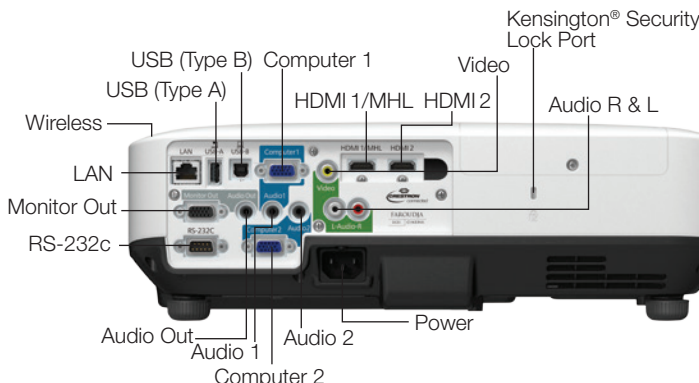
Projection Lens

Type Optical Zoom (Manual)/ Focus (Manual)
F-number 1.5 – 2
Focal Length 23 – 38.4 mm
Zoom Ratio 1 – 1.6

Other

Display Performance NTSC: 480 lines, PAL: 576 lines
 (Depends on observation of the multi-burst pattern)
Input Signal NTSC/NTSC4.43/PAL/M-PAL/N-PAL/
 PAL60/SECAM
Speaker 16 W (mono)
Operating Temperature 41 ° to 95 °F (5 ° to 35 °C)
Power Supply Voltage 100 – 240 V AC ±10%, 50/60 Hz
Power Consumption
 435 W (Normal Mode)
 330 W (ECO Mode)
 3.5 W Standby (Communication On)
 0.21 W Standby (Communication Off)
Fan Noise
 39 dB (Normal Mode)
 31 dB (ECO Mode)
Security Kensington-style lock provision

Interfaces



Dimensions (W x D x H)

Including feet 14.8" x 11.4" x 4.9"
Excluding feet 14.8" x 11.4" x 4.3"
Weight 10.2 lb (4.6 kg)

Remote Control

Features Brightness, contrast, tint, saturation, sharpness, input signal, sync, tracking, position, color temperature, volume
Operating Angle
 Right/left: ± 45 degrees
 Upper/lower: ± 45 to -15 degrees
 Operating Distance 26.2 ft (8 m)

Eco Features

RoHS compliant
 Recyclable product¹⁰
 Epson America, Inc. is a SmartWaySM Transport Partner¹¹

Support

The Epson ConnectionSM

Pre-sales support
 (U.S. and Canada): 800-463-7766
 Internet website: www.epson.com

Service Programs Two-year projector limited warranty, Epson Road Service program, PrivateLine[®] dedicated toll-free support and 90-day lamp limited warranty

What's in the Box

PowerLite 1975W Projector, wireless LAN module, remote control, batteries, power cable, computer cable (VGA), CD with User Guide Link, warranty card, Quick Setup Sheet

Ordering Information

Product Name

PowerLite 1975W projector

Product Code

V11H621020

Accessories

Replacement Lamp (ELPLP77)
 Replacement Filter (ELPAF41)
 Wireless LAN module (ELPAP07)
 Quick Connect wireless key (ELPAP09)
 Soft carrying case (ELPKS68)

Product Code

V13H010L77
 V13H134A41
 V12H418P12
 V12H005M09
 V12H001K68

- 1 Compared to leading 1-chip DLP business and education projectors based on NPD data, July 2011 through June 2012. Color brightness (color light output) measured in accordance with IDMS 15.4. Color brightness will vary depending on usage conditions.
- 2 Color brightness (color light output) and white brightness (white light output) will vary depending on usage conditions. Color light output measured in accordance with IDMS 15.4; white light output measured in accordance with ISO 21118.
- 3 Consult your user manual for input combinations.
- 4 Compared to leading 1-chip DLP projectors based on NPD data, July 2011 through June 2012. Color Brightness (color light output) measured in accordance with IDMS 15.4. Color Brightness will vary depending on usage conditions.
- 5 Data source: ProjectorCentral.com Jan. 2014. Average of 1243 shipping models for which the manufacturers provided lumens and total power data, all resolutions and brightness levels. Energy efficiency was measured as wattage per lumen. It was measured for both 3LCD and 1-chip projectors in each of six brightness segments. 3LCD projectors averaged less required electricity per lumen in each of the six segments.
- 6 9 out of 10 people preferred images from leading 3LCD projectors over leading 1-chip DLP business and education projectors. Leading projectors selected according to NPD data as of July 2013. Based on independent U.S. research conducted by Radius Research (July 2013).
- 7 Roku Streaming StickTM allows you to watch content from popular Internet streaming services. Roku's Streaming Stick only available in the U.S.
- 8 Moderator feature is part of EasyMP Multi-PC Projection software.
- 9 Lamp life will vary depending upon mode selected, environmental conditions and usage. Lamp brightness decreases over time.
- 10 For convenient and reasonable recycling options, visit www.epson.com/recycle
- 11 SmartWay is an innovative partnership of the U.S. Environmental Protection Agency that reduces greenhouse gases and other air pollutants and improves fuel efficiency.

Better Products for a Better Future[™]
eco.epson.com



EPSON, EasyMP, Instant Off and PowerLite are registered trademarks, EPSON Exceed Your Vision is a registered logomark and Better Products for a Better Future is a trademark of Seiko Epson Corporation. PrivateLine is a registered trademark and Epson Connection is a service mark of Epson America, Inc. Mac is a trademark of Apple Inc., registered in the U.S. and other countries. Android is a trademark of Google Inc. Miracast[®] is a registered trademark of Wi-Fi Alliance[®]. SmartWay is a service mark of the U.S. Environmental Protection Agency. All other product and brand names are trademarks and/or registered trademarks of their respective companies. Epson disclaims any and all rights in these marks. Copyright 2014 Epson America, Inc. Com-SS-Oct-13 CPD-41435R1 12/14

Epson America, Inc.
 3840 Kilroy Airport Way, Long Beach, CA 90806

Epson Canada Limited
 185 Renfrew Drive, Markham, Ontario L3R 6G3

www.epson.com
www.epson.ca

Name

Email

Phone Number