

# TECHNOLOGY REPORT

**Marshall Electronics, Inc.**

1910 East Maple Av, El Segundo, CA 90245 USA

TEL : 310-333-0606

FAX : 310-333-0688

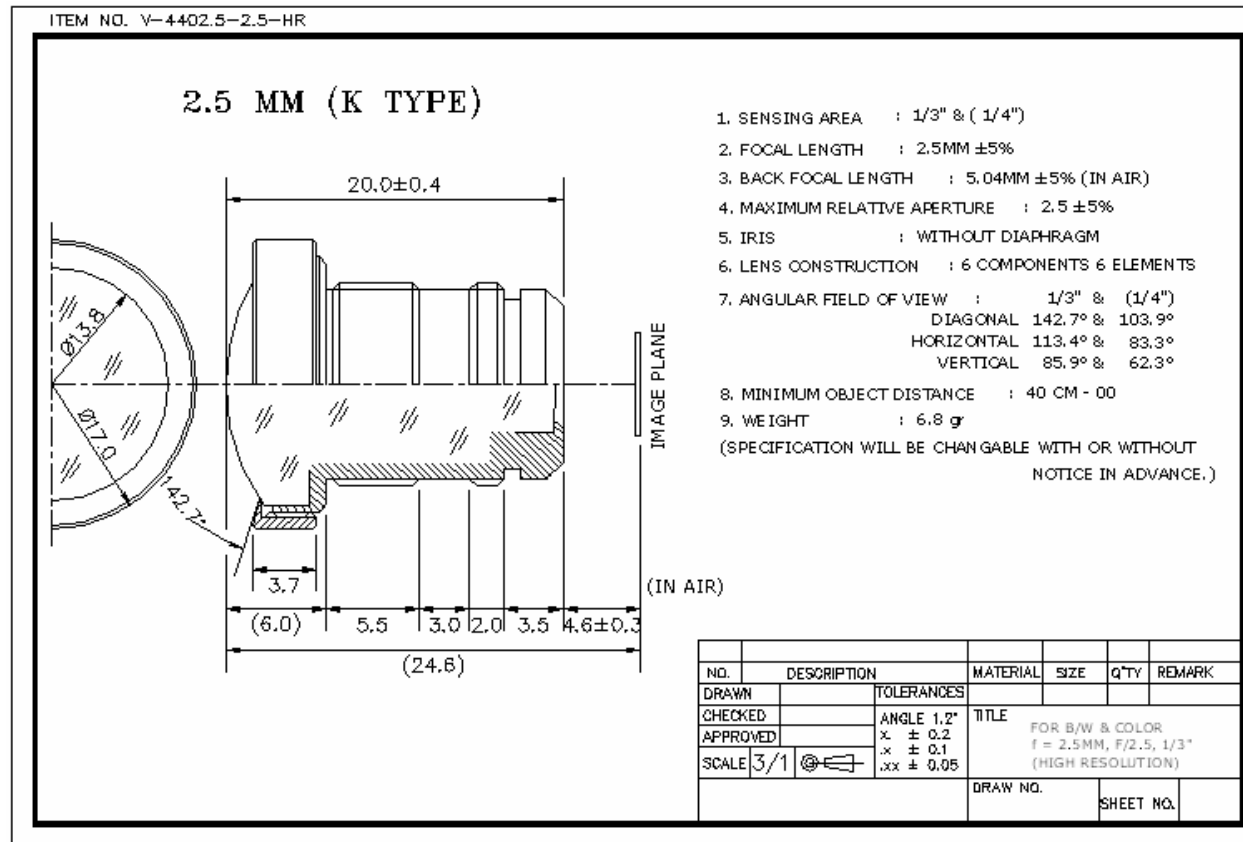
Website: [www.mars-cam.com](http://www.mars-cam.com)

Email: [sales@mars-cam.com](mailto:sales@mars-cam.com)

## V-4402.5-2.5-HR Lens

## 2.5mm F2.5 High Resolution CCTV Lens

### Specification Data Sheet



# TECHNOLOGY REPORT

**Marshall Electronics, Inc.**

1910 East Maple Av, El Segundo, CA 90245 USA

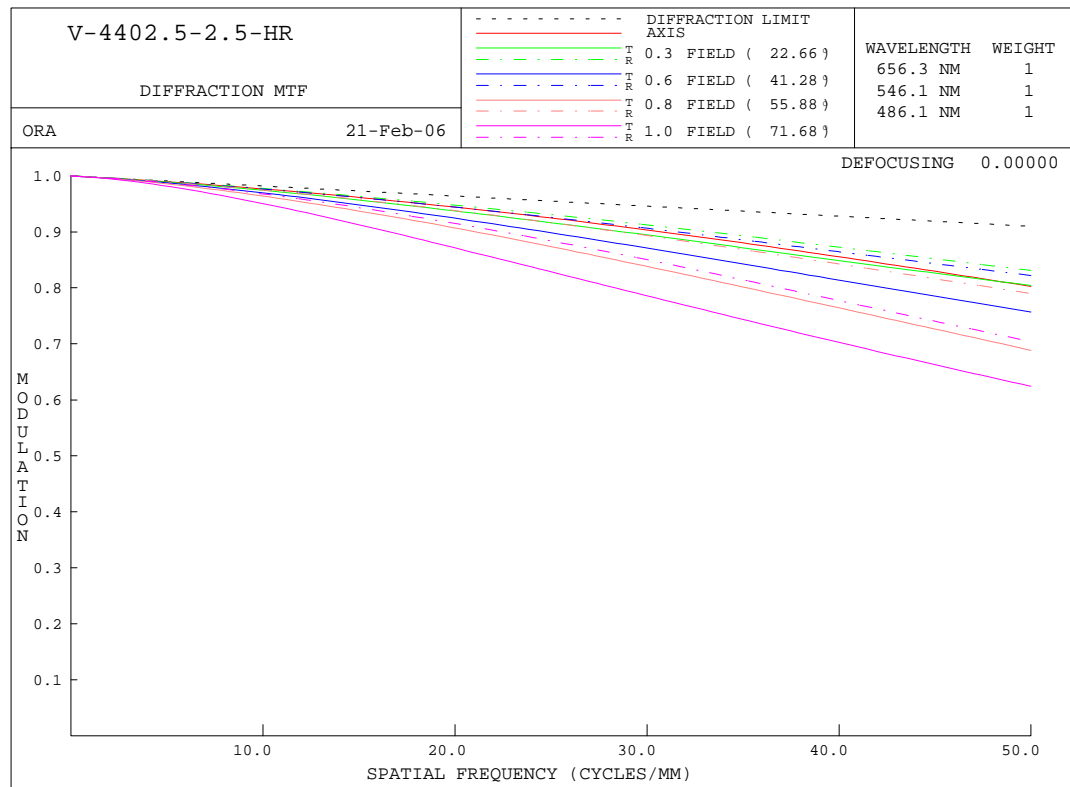
TEL : 310-333-0606

FAX : 310-333-0688

Website: [www.mars-cam.com](http://www.mars-cam.com)

Email: [sales@mars-cam.com](mailto:sales@mars-cam.com)

MTF (modulation transfer function)



# TECHNOLOGY REPORT

**Marshall Electronics, Inc.**

1910 East Maple Av, El Segundo, CA 90245 USA

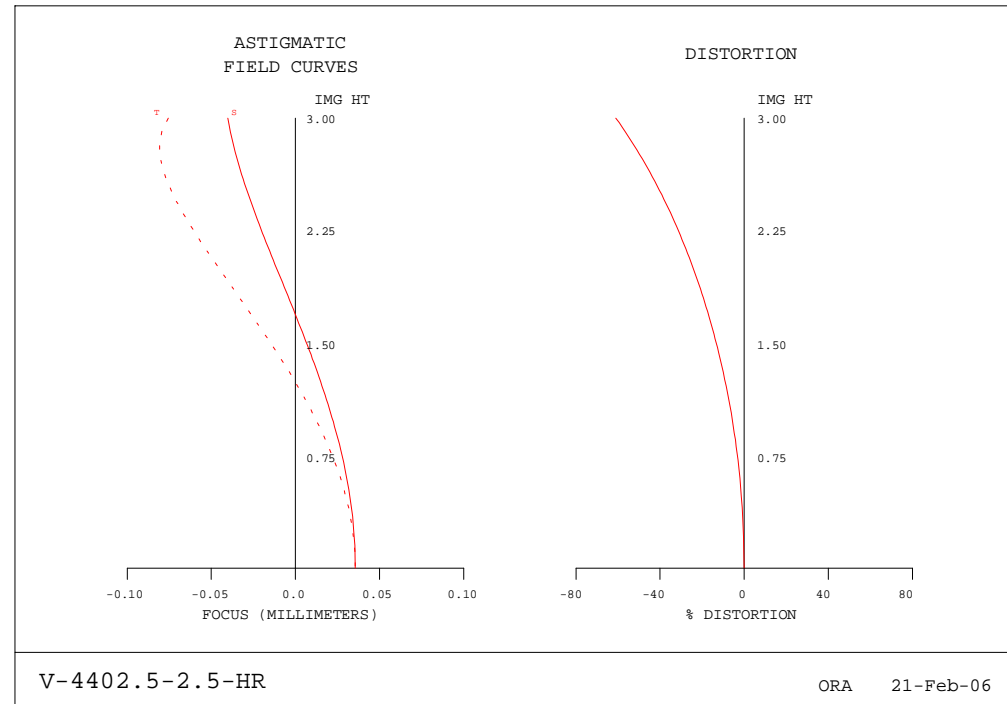
TEL : 310-333-0606

FAX : 310-333-0688

Website: [www.mars-cam.com](http://www.mars-cam.com)

Email: [sales@mars-cam.com](mailto:sales@mars-cam.com)

- Optical Distortion



# TECHNOLOGY REPORT

**Marshall Electronics, Inc.**

1910 East Maple Av, El Segundo, CA 90245 USA

TEL : 310-333-0606

FAX : 310-333-0688

Website: [www.mars-cam.com](http://www.mars-cam.com)

Email: [sales@mars-cam.com](mailto:sales@mars-cam.com)

## ROTATIONALLY SYMMETRIC FIELD ABERRATIONS

POSITION 1 V-4402.5-2.5-HR

WAVELENGTH 656.3 NM

RELATIVE DISTORTION	IMG HT	X-FOCUS	Y-FOCUS	X-FOCUS	Y-FOCUS	
FIELD HEIGHT	AT THE IMAGE SURFACE		(DISPLACED BY 0.000000)		(PER	
CENT)						
0.00	0.00	0.035531	0.035531	0.035531	0.035531	0.00000
0.10	0.30	0.034247	0.033294	0.034247	0.033294	-0.51336
0.20	0.60	0.030459	0.026704	0.030459	0.026704	-2.06149
0.30	0.90	0.024362	0.016104	0.024362	0.016104	-4.66908
0.40	1.20	0.016276	0.002058	0.016276	0.002058	-8.37948
0.50	1.50	0.006652	-0.014653	0.006652	-0.014653	-13.25857
0.60	1.80	-0.003940	-0.033005	-0.003940	-0.033005	-19.40197
0.70	2.10	-0.014802	-0.051629	-0.014802	-0.051629	-26.94883
0.80	2.40	-0.025112	-0.068447	-0.025112	-0.068447	-36.11051
0.90	2.70	-0.033913	-0.079535	-0.033913	-0.079535	-47.23825
1.00	3.00	-0.040146	-0.075552	-0.040146	-0.075552	-61.01145

Units of focus are MILLIMETERS