

# Ki Pro<sup>®</sup> | ULTRA

4K/UltraHD and 2K/HD  
Recorder and Player



ProRes<sup>®</sup>

**AJA**<sup>®</sup>  
VIDEO SYSTEMS

Because it matters.<sup>®</sup>





# Ki Pro® | ULTRA



## 4K/UltraHD and 2K/HD Recorder and Player

Supports the latest technologies and workflows, including up to 4K 60p

Ki Pro Ultra is a next generation 4K/UltraHD/2K/HD capable file based video recorder and player with broad support for video formats and frame rates (up to 4K 60p) and flexible input and output connectivity, including 3G-SDI, fiber and HDMI.

Only **\$3,995 US MSRP\***

[Find a Reseller](#)

Ki Pro Ultra is a 4K/UltraHD/2K/HD file based video recorder and player, supporting the latest connectivity and large raster high framerate workflows, including 4K 60p.

3G-SDI, fiber and HDMI digital video connectivity and a wealth of analog and digital audio connectivity answers any project's demand for efficient, powerful and flexible workflows.

Designed to be either portable or rackmountable with a half rack wide 2RU high dimensions, it's well suited for use in studio/truck environments in addition to on-set and even digital signage applications. The Ki Pro Ultra answers the growing demand for 4K and UltraHD capable recorder products with full support for current HD projects.

Ki Pro Ultra enables manageable large raster workflows with the efficiencies of Apple ProRes, supporting a broad range of video formats and framerates recorded directly to AJA's proven and reliable Pak Media, offering the lowest cost per GB available today.

Next generation pristine UltraHD 60p and 4K 60p recording in Apple ProRes HQ is offered utilizing AJA Pak1000 SSD media, complete with full rollover capabilities from drive to drive. This ensures long recording times for the most demanding projects.

Smooth slow motion playback can be obtained easily with full control via the RS-422 serial connection or through the simple and intuitive on unit menu system.

Menus and images are beautifully rendered on a new high resolution LCD display enabling detailed playback and monitoring in all environments.

Ki Pro Ultra, the ultimate next generation digital recorder and player.

\* Pricing is for US only. International pricing will vary. Please contact a local AJA Reseller for pricing details.



# Ki Pro® | ULTRA



## Reliable Storage Media

Ki Pro Ultra captures directly to rugged and reliable AJA Pak SSD media. Pak Media is available in a variety of capacities to best suit the demands of your production. Pak1000 is the perfect companion for Ki Pro Ultra offering 1TB of fast SSD media for up to 4K recording at 60p in ProRes HQ. Ki Pro Ultra also offers compatibility with Pak512 and Pak256 media, ideal for lower frame rate projects.

The twin media drive bays on the Ki Pro Ultra allow extremely fast media changes and rollover recording, which allows a recording to start on one media module and seamlessly continue onto the second module once the first has reached capacity.

Pak Media may also be used with the optional Pak Dock which features USB 3.0 and Thunderbolt™ connectors for lightning fast data transfers from and to your desktop or laptop.



## 10-bit, Full Raster Recording

### ProRes

Big on quality - but not on file size.

Ki Pro Ultra records to five quality levels of Apple ProRes including Apple ProRes 4444. This lets you choose the balance of image fidelity and file size that's right for each individual production as well as having the flexibility to record directly to native file formats that are understood by most major editing systems.

Next generation UltraHD 60p and 4K 60p recording is attainable all the way up to Apple ProRes HQ when using AJA Pak1000 SSD media.

By utilizing Apple ProRes, your project will have the best image quality available, with manageable and affordable file sizes.

## Familiar Controls and Operation

Anyone familiar with the operation of a tape deck will feel immediately comfortable when working with Ki Pro Ultra.

Just like a traditional tape deck, Ki Pro Ultra features straightforward and dedicated transport buttons - record, play, stop, rewind, fast forward - making the device easy to operate with minimal training time. The current status of the system and key configuration information is clearly displayed on the beautiful built-in high resolution LCD screen. Additional operational information can be found in the STATUS menu which can be accessed even when recording or playing back.

The Ki Pro Ultra operating system offers users a logical menu structure that is easy to navigate with menu parameters presented in clear and understandable language.



### RS-422 Control

RS-422 control allows Ki Pro Ultra to integrate easily with supported editing systems and external controllers allowing it to fulfill several of the functions of a traditional VTR. Supported NLEs can even perform assemble edits directly to the Ki Pro Ultra.



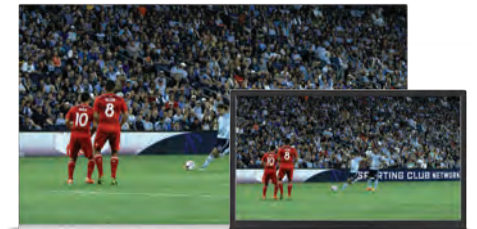
### Fiber Connectivity

Ki Pro Ultra's fully integrated fiber inputs and outputs means that it can be integrated directly to a dedicated fiber network alongside many other fiber products. Fiber allows outgoing and incoming video signals to be transmitted as far as 10km away.



### Professional Connections

The video and audio connections on the rear panel of the Ki Pro Ultra offer next generation connectivity with 3G-SDI, fiber and HDMI inputs and outputs, AES and analog XLR balanced audio, LTC, RS-422 and LAN.



### 4K and HD Monitoring

Ki Pro Ultra provides full resolution outputs for 4K, UltraHD and HD over 3G-SDI, fiber and HDMI, including the latest affordable UltraHD monitors using HDMI for on-set quality checks. An additional dedicated 2K and HD-SDI monitor output can be fed to any affordable and existing HD-SDI display.

\* SFP modules not included

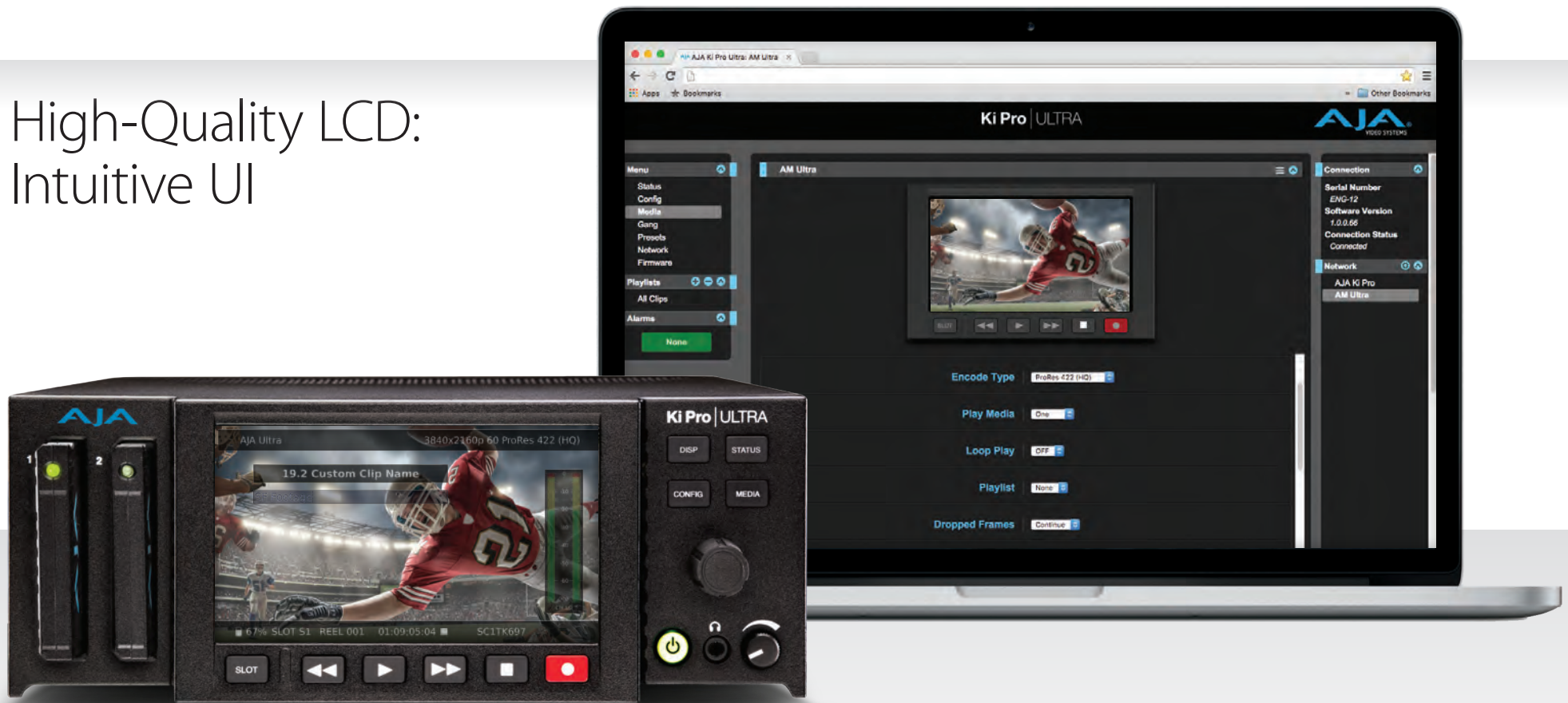


# Ki Pro<sup>®</sup> | ULTRA

## Workflow



# High-Quality LCD: Intuitive UI



## Interface with Ki Pro Ultra

Ki Pro Ultra features a beautiful high resolution HD display for pristine monitoring of your material, and serves as your interface to Ki Pro's familiar and intuitive menu system. The detailed overlay UI includes on-screen keyboard functionality and a clear view of the powerful yet simple to operate UI, all pristinely presented on the 4.8" 720p LCD display.

When remote from Ki Pro Ultra, utilize the fast LAN connectivity and access the internal webserver from any web browser on any OS. Ki Pro Ultra's web interface allows firmware uploading, configuration of all settings, the ability to save presets and a simple pane for configuring gang recording when utilizing multiple units on a shoot.

## Choice, at your fingertips.

A rotary selection knob allows for quick and accurate adjustment of all configuration and settings options. Switch confidently between Status, Configuration and Media grouped settings with a touch of the clearly labeled buttons above and rotate the selection knob to enter the menu selection for the parameter you wish to affect. The robust selection knob gives clear mechanical feedback as you adjust inspiring confidence.

Simply click the rotary dial to set your preferred option once you have found the setting you desire from a list within any menu grouping. To preserve your choices, Ki Pro Ultra offers the ability to save and reload presets, ensuring consistency across a project.

# Ki Pro® | ULTRA

## Connections (front panel)



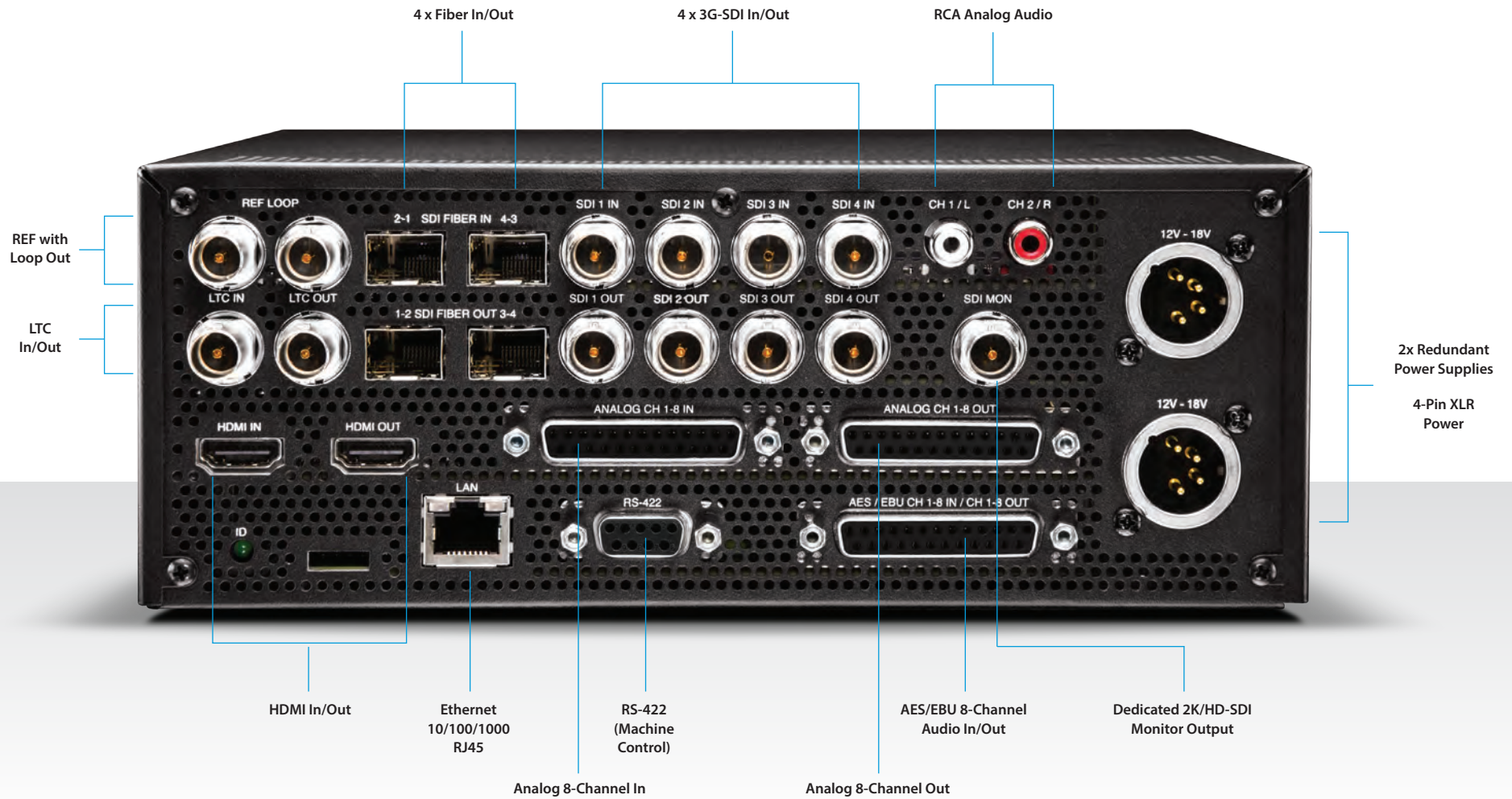
[Click here](#)

For full product specifications visit [www.aja.com/en/products/ki-pro-ultra/#techspecs](http://www.aja.com/en/products/ki-pro-ultra/#techspecs)



# Connections

(rear panel)



# Ki Pro® | ULTRA

## Accessories



### Pak Media

Pak Media is a high capacity solid state drive encased in a protective housing with rugged connection engineered to handle the rigors of repeated use in the field. Available in 1TB, 512GB and 256GB capacities.



### Pak Dock

External Pak Dock with Thunderbolt and USB 3.0 connections for fast transfer of media to a host computer.



### Pak-Adapt-CFast

Pak-Adapt-CFast enables the use of qualified CFast cards in Ki Pro Ultra for recording and playback.



### KPU-Shelf

Ki Pro Ultra features a small footprint for desk top use or can be mounted side by side using the additional KPU-Shelf for rack-mount applications.



## Tech Specs

### Video Formats

- (4K) 4096x2160p 23.98, 24, 25, 29.97, 30, 50, 59.94, 60
- (UltraHD) 3840x2160p 23.98, 24, 25, 29.97, 30, 50, 59.94, 60
- (2K) 2048x1080p 23.98, 24, 25, 29.97, 30, 50, 59.94, 60
- (HD) 1080p 23.98, 24, 25, 29.97, 30, 50, 59.94, 60
- (HD) 1080i 25, 29.97, 30
- (HD) 1080psf 23.98, 24, 25\*, 29.97\*
- \*NOTE: 25 and 29.97 requires Record Type>PsF selection
- (HD) 720p 50, 59.94, 60

### Codec Support

- Apple ProRes 4444\*
- Apple ProRes 422 (HQ)
- Apple ProRes 422
- Apple ProRes 422 (LT)
- Apple ProRes 422 (Proxy)
- \*NOTE: Apple ProRes 4444 4K/UltraHD/2K/HD up to 30 fps

### Removable Storage

- 2 x slots, AJA Pak SSD media Pak256, Pak512, Pak1000\*
- \*NOTE: 4K/UltraHD 50, 59.94, 60 ProRes 422 (HQ) recording requires genuine AJA Pak1000 media

### Video Input Digital

- 4 x 3G-SDI, SMPTE-292/296/424, 10-bit (12-bit input supported)
- Single Link 4:2:2, 4:4:4 (1 x BNC)
- Dual Link 4:2:2, 4:4:4 (2 x BNC)
- 4K/UltraHD 4:2:2 or 4:4:4 (4 x BNC)
- Dual Channel fiber input (2 x Ports) SFPs required (not supplied)
- 1 x HDMI standard type A connector
- HDMI v1.4b, RGB or YCbCr
- HDMI v2.0 compatible YCbCr, 4:2:0 only at 4K/UltraHD 50, 59.94, 60

### Video Output Digital

- 4 x 3G-SDI, SMPTE-292/296/424, 10-bit
- Single Link 4:2:2 or 4:4:4 (1 x BNC)
- Dual Link 4:2:2 or 4:4:4 (2 x BNC)
- 4K/UltraHD 4:2:2 or 4:4:4 (4 x BNC)
- Dual Channel fiber output – (2 x Ports) SFPs required (not supplied)
- 1 x HD-SDI monitor output with support for up to 2048x1080 4:2:2
- 1 x HDMI standard type A connector
- HDMI v1.4b, RGB or YCbCr
- HDMI v2.0 compatible YCbCr, 4:2:0 only at 4K/UltraHD 50, 59.94, 60

### Audio Input Digital

- 8-Channel, 24-bit SDI/fiber embedded audio, 48 kHz sample rate, synchronous
- 8-Channel, 24-bit HDMI embedded audio, 48 kHz sample rate, synchronous
- 8-Channel, AES/EBU via (1/2 x DB-25 TASCAM pinout)

### Audio Input Analog

- 8-Channel, 24-bit A/D analog audio, 48 kHz sample rate (1 x DB-25 TASCAM Pinout)
- +24 dBu full scale digital
- +/- 0.2dB 20 Hz to 20 kHz frequency response

### Audio Output Digital

- 8-Channel, 24-bit SDI/fiber embedded audio, 48 kHz sample rate, synchronous
- 8-Channel, 24-bit HDMI embedded audio, 48 kHz sample rate, synchronous
- 8-Channel, AES/EBU via (1/2 x DB-25 TASCAM pinout)

### Audio Output Analog

- Stereo unbalanced headphone jack (1 x 3.5mm jack) with volume control
- 2-Channel unbalanced 2 x RCA connectors
- 8-Channel, 24-bit D/A analog audio, 48 kHz sample rate (1 x DB-25 TASCAM Pinout)

### Timecode

- SDI RP188/SMPTE 12M via SDI BNC
- LTC input (1 x BNC)
- LTC output (1 x BNC)

### Reference

- Reference Loop (2 x BNC)

### Network Interface

- 10/100/1000 Ethernet (RJ-45)
- Embedded web server for remote control via REST
- Video Confidence Monitor via web interface
- Clip upload/download via web Interface in DATA-LAN mode
- Configuration and transport control via web interface

### RS-422

- 1 x DE-9 female connector, Sony 9-pin serial protocol

### User Interface

- Rotary selector knob
- Dedicated, backlit transport controls and menu buttons
- Large 1280 x 720 TFT LCD display with video monitor and menu/status overlays

### Physical

- Width: 8.64" (21.94cm)
- Depth: 9.34" (23.72cm)
- Height: 3.31" (8.41cm)
- Power: dual, redundant, 100-240 VAC 50/60Hz (adapter), 12-18Vdc 4-pin XLR (chassis), 5.4A max, 35W-60W typical-65W max
- Weight: 5.55 lbs (2.52 kg)

[Click here](#)

For full product specifications visit [www.aja.com/en/products/ki-pro-ultra/#techspecs](http://www.aja.com/en/products/ki-pro-ultra/#techspecs)

### 3 Year Warranty

AJA Video warrants that Ki Pro Ultra will be free from defects in materials and workmanship for a period of three years from the date of purchase.

### About AJA Video Systems, Inc.

Since 1993, AJA Video has been a leading manufacturer of video interface and conversion solutions, bringing high quality, cost effective digital video products to the professional, broadcast and postproduction markets.

AJA products are designed and manufactured at our facilities in Grass Valley, California, and sold through an extensive sales channel of resellers and systems integrators around the world. For further information, please see our website at [www.aja.com](http://www.aja.com)

