



Cross-type
Max. **45**-point
AF

FOCUS WITH PRECISION

Whether raising your game to SLR level photography or having fun with a feature-rich, versatile SLR you can use pretty much anywhere, the EOS 80D camera is your answer. It features an impressive 45-point all cross-type AF system* that provides high-speed, highly precise AF in virtually any kind of light. An Intelligent Viewfinder with approximately 100% coverage helps ensure photographers don't miss their shot. Improvements like a powerful 24.2 Megapixel (APS-C) CMOS sensor and enhanced Dual Pixel CMOS AF boost performance across the board. It's also compatible with new NANO USM lenses, which provide smooth and near-silent operation for superb moviemaking performance and still image capture. Complementing the EOS 80D's advanced operation are built-in wireless connectivity and Full HD 60p movies that can be saved as MP4s for easy sharing. Merging power, precision and operability, the EOS 80D is a dynamic SLR camera for anyone ready to realize their creative vision.

Dual Pixel
CMOS **AF**

24.2 MEGA
PIXELS
CMOS

Approx.
100%
Viewfinder

Wi-Fi / NFC

FULL HD
1080

Vari angle LCD

DIGIC
6

ISO
16000
12800

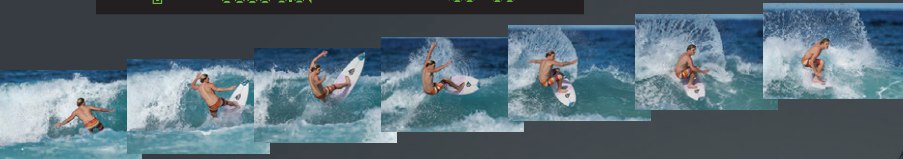
Up to
7.0
Frames
Per Sec



Cross-type
Max. **45-point**
AF

Brilliantly Precise Autofocus

For next-level AF operation, the EOS 80D camera has a wide-area, 45-point, all cross-type AF system*. Excellent in dim light, it has improved low-light performance to EV -3 and is compatible with lenses with maximum apertures of f/8 or higher. It also features 4 types of AF area selection modes.



Up to
7.0
Frames
Per Sec

Rapid-fire Capture

Capable of shooting up to 7.0 fps during continuous shooting, the EOS 80D is an amazing camera for quick action.

Canon's remarkable shutter, combined with speedy, sophisticated electronics, helps ensure virtually instant response and performance.

NANO USM **EF-S 18-135mm f/3.5-5.6 IS USM Lens with New NANO USM Technology**

The EOS 80D camera is compatible with the EF-S 18-135mm f/3.5-5.6 IS USM lens, which features a new NANO USM technology. It provides quiet, fast and smooth AF transitions that can be ideal for movie recording, and delivers high-speed AF for superb still photography.



Dual Pixel CMOS AF **Smooth and Accurate Live View Autofocus**

Experience a new level of Live View and movie shooting with improved Dual Pixel CMOS AF and Vari-angle Touch Screen Clear View LCD II monitor. Activated with a simple touch, Dual Pixel CMOS AF features enhanced focusing speed and smoother tracking, and is compatible with all EF and EF-S lenses.



BUILT-IN WI-FI* AND NFC*** TECHNOLOGIES**



Wi-Fi / NFC Built-in wireless technologies open many possibilities, such as remote shooting using the free Canon Camera Connect app**. You can also connect seamlessly to compatible devices, such as the Canon Connect Station CS100 device, to share your favorite images and videos.

24.2 MEGAPIXEL CMOS SENSOR

24.2 MEGA PIXELS
CMOS

The EOS 80D camera features a newly developed 24.2 Megapixel (APS-C) CMOS sensor that not only captures high-resolution images, but also features refined individual pixels that enable high ISO speeds.

FULL HD VIDEO

FULL HD
1080

Full HD 60p recording with Movie Servo AF tracks subjects in motion smoothly and consistently for incredibly sharp, beautiful movies. Save in both MOV and MP4 format for fast and easy sharing.

ANTI-FLICKER SHOOTING

The Anti-flicker Shooting function compensates for flickering light sources, helping to minimize disparities in color and exposure during continuous shooting.

EOS 80D SPECIFICATIONS

Autofocus System	TTL secondary image-forming phase-difference detection system with AF-dedicated CMOS sensor that has max. of up to 45 points (all points are cross-type)*; One-Shot, AI Servo AF II and AI Focus AF; Manual focusing confirmation possible with EF and EF-S lenses; Automatic or manual point selection	Viewfinder / Viewfinder Coverage	Fixed eye-level pentaprism / Approx. 100% horizontal and vertical at 0.95x
		Built-in Wi-Fi*** and NFC***	Yes
Image Sensor / Image Processor	DIGIC 6 / 24.2 Megapixel CMOS Sensor with Dual Pixel CMOS AF	Autofocus Sensitivity	EV -3 to 18 (with Center f/2.8, One-shot AF, at 73°F/23°C and ISO 100)
Crop Factor	1.6x (APS-C)	Autofocus Auxiliary Light Built-in	Yes (via built-in flash)
Video Recording	1920 x 1080 (Full HD): 60p (59.94) / 30p (29.97) / 24p (23.976), 1280 x 720 (HD): 60p (59.94) / 30p (29.97)	Shutter	Vertical-travel, mechanical, focal-plane shutter with all speeds electronically controlled
Number of Focusing Points	45; Each point has cross-type sensors; Center AF point has additional high-precision, dual cross-type sensor with f/2.8 and f/5.6 lenses	Maximum Flash Synchronization Speed	Up to 1/250 sec.
ISO Range	(Still and Video) ISO 100-16000, H: 25600	Built-in LCD	Vari-angle Touch Screen 3.0" Clear View LCD II monitor (Approx. 1,040,000 dots)
Recording Media	SD/SDHC/SDXC (UHS-I and Eye-Fi Compatible) Memory Cards	Body Dimensions	Approx. 5.47 x 4.14 x 3.09 in. / 139.0 x 105.2 x 78.5mm (W x H x D)
Max. Frames Per Second	Single and 7.0 fps	Weight	Approx. 25.75 oz. / 730g (CIPA Standard) Approx. 22.93 oz. / 650g (Body only)*
Shutter Speeds	30-1/8000 sec. & Bulb, manually settable in 1/3- or 1/2-stop increments		

* The number of AF points, cross-type AF points and Dual cross-type AF points vary depending on the lens used.

** Compatible with iOS* versions 7.1/8.4/9.0, Android™ smartphone and tablet versions 4.0/4.1/4.2/4.3/4.4/5.0/5.1. Data charges may apply with the download of the free Canon Camera Connect app. This app helps enable you to upload images to social media services. Please note that image files may contain personally identifiable information that may implicate privacy laws. Canon disclaims and has no responsibility for your use of such images. Canon does not obtain, collect or use such images or any information included in such images through this app. *** Compatible with Android™ smartphone and tablet versions 4.0/4.1/4.2/4.3/4.4/5.0/5.1. * Excluding the battery, card, body cap and eye cup.

Certain images and effects simulated. Products not shown to scale. Not responsible for typographical errors.

© 2016 Canon U.S.A., Inc. All rights reserved. Canon, DIGIC, the DIGIC Logo and EOS are registered trademarks of Canon Inc. in the United States and may be registered trademarks or trademarks in other countries. Wi-Fi and the Wi-Fi CERTIFIED logo are registered trademarks of the Wi-Fi Alliance. All other product names, brand names and logos are trademarks or service marks of their respective owners.

Canon