

## Model No.

# LWSR-722

## Swing-out Wall Rack

### • 7U x 21.92"D x 23.06"W

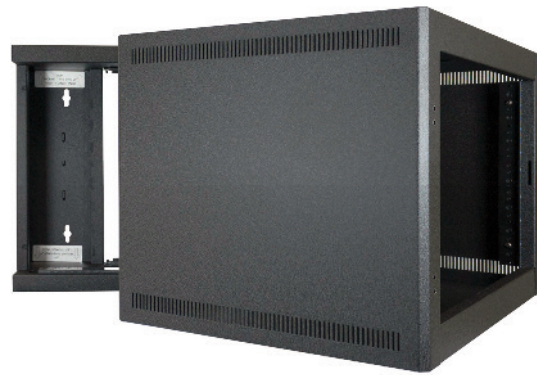
Economical, two-part rack features 16 gauge steel backbox and a mounting section that attaches with two heavy duty bolts through steel fasteners/securing nuts. Optional front door available separately.

#### Construction & Features

- Backbox has two center locks (keyed differently than optional front door), 16" mounting centers, 10"W center wiring path, and removable knockout panels on top/bottom featuring 0.5" knockouts for wireless antennas; 0.75-0.5" and 1.5"-1.0" compound knockouts for conduit. Backbox measures 20.08"H x 3.65"D x 23.06"W
- Mounting section connects to backbox with right or left-hand swing and features welded sides with top/bottom vents, 1 pair fixed position front rails (tapped 10-32 and marked with RU increments) recessed from frame to allow 1.38" clearance for equipment knobs and connections between equipment and (optional) front door. Mounting Section measures 16.63"H x 18.178"D x 23.06"W. 7 rack units.
- Overall measurements 20.08"H x 21.92"D x 23.06"W
- Includes PilotPoint™ screws with captive washers and 5/16" allen wrench
- Load capacity 150 lbs.
- Made in the U.S.A. with 100% certified U.S. steel
- Black wrinkle powder epoxy finish; beveled corners
- EIA/TIA compliant
- Installation note: Backbox and mounting section are boxed together. Mounting section provides 90 degree open swing access for servicing and requires a minimum swing clearance equivalent to mounting section depth (18.178") plus 1 inch for optional front door.

#### A&E Specifications

The wall-mount rack shall be Lowell Model No. LWSR-722 which shall feature a backbox and mounting section. Overall measurements shall be 20.08"H x 21.92"D x 23.06"W



with 7 rack units of panel space. The mounting section shall have top/bottom side vents and one pair of fixed-position front mounting rails tapped 10-32 and marked with rack unit increments. It shall attach to the backbox with heavy duty bolts that can be moved to the opposite side to change swing orientation. The backbox shall measure 3.65"D and be formed from 16-gauge certified U.S. steel with keyhole mounting slots on 16" centers. It shall feature a 10"W center wiring path, removable knockout panels on top/bottom, lacing points on back plane, and keyed locks at top and bottom. Knockout panels shall have 0.5" knockouts for wireless antennas; 0.75-0.5" and 1.5"-1.0" compound knockouts for conduit. The rack shall have a black wrinkle powder epoxy finish.

#### Optional (order separately)

- LFD-7: solid surface-mount front door with keyed lock.
- LFD-7P: smoked plexiglass surface-mount front door
- LFD-7FV: fully vented surface-mount front door
- RRTF-7: extra pair of rack rails (7U)
- RRTBF: conversion bracket allows fixed-position front or optional rear rails to be mounted deeper into the rack (i.e. adjustable).

## Technical Drawings

