



0215-2010	MB-215 matte box kit for any camera with 15 mm LW support. Consisting of:
0200-0215	MB-215 matte box.
0250-0190	114 mm Flexible cuff adapter ring. Max. lens diameter: 110 mm.
0360-0100	Adjustable bars adapter for MB-2XX and MB-3XX series matte boxes.

0255-2010	Compact MB-255 matte box kit for any camera with 15 mm LW support. Consisting of:
0200-0255	MB-255 matte box.
0250-0190	114 mm Flexible cuff adapter ring. Max. lens diameter: 110 mm.
0360-0100	Adjustable bars adapter for MB-2XX and MB-3XX series matte boxes.

0435-2010	Advanced MB-435 matte box kit for any camera with 15 mm LW support. Consisting of:
0400-0435	MB-435 matte box.
0420-0601	143 mm Flexible donut adapter ring. Max. lens diameter: 133 mm.
0460-0600	Swing away bracket for MB-435 matte box.

0455-2010	Advanced MB-455 matte box kit for any camera with 15 mm LW support. Consisting of:
0400-0455	MB-455 matte box.
0420-0601	143 mm Flexible donut adapter ring. Max. lens diameter: 133 mm.
0460-0200	Swing away bracket for MB-455 matte box.

Outer diameter: 114 mm, maximum lens diameter 110 mm **0250-0190**

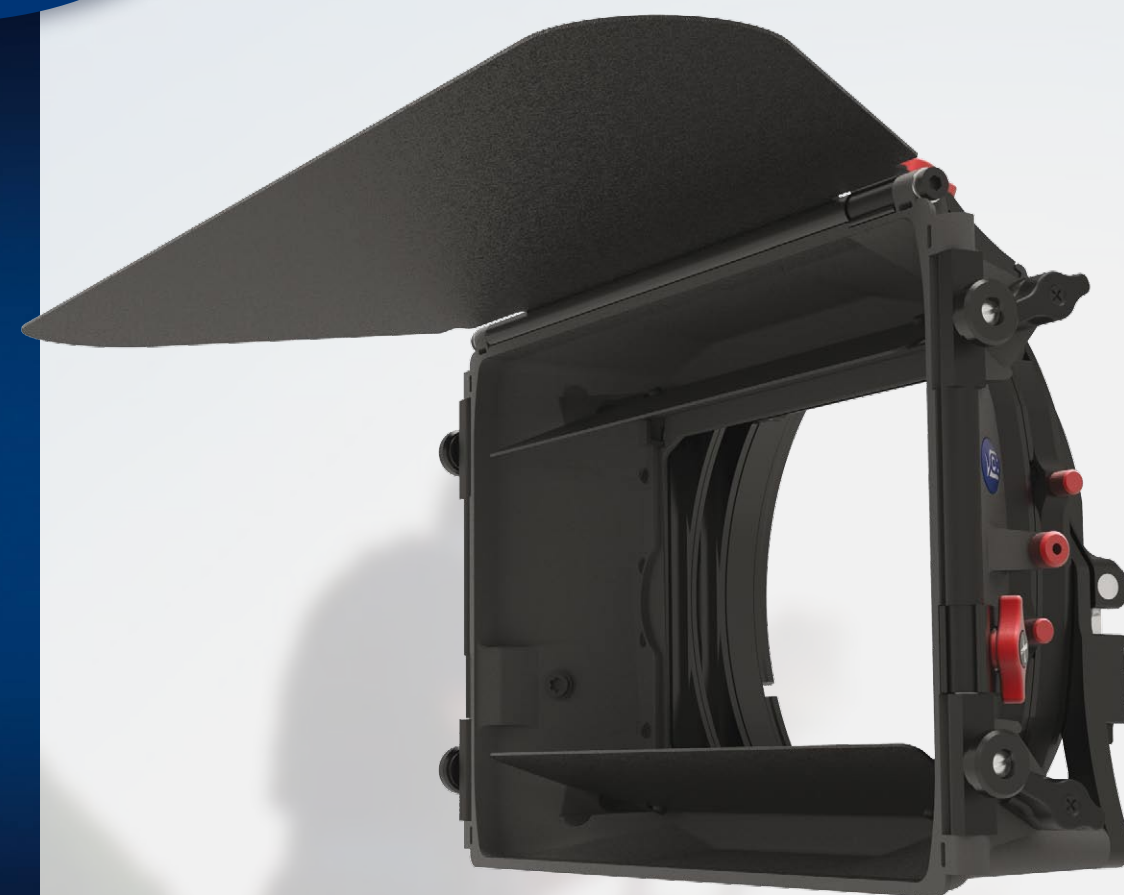
Outer diameter: 114 mm, maximum lens diameter 107 mm. **0250-0195**

Used to fit our previous 105 mm adapterring system (please check website for availability).

September 2015



Matte boxes



WWW.VOCAS.COM



Matte boxes

MB-455 matte box
Ø143 mm

Full option high-end production matte box. Up to 5 filters. Two fully rotatable 4"x5,65" / 5.65"x5,65" filter frames, one non rotatable 4"x5,65" filter frame, one optional fixed 4"x5,65" filter frame in the hood, one 138 mm round filter (rotatable) in optional donut adapterring and a French flag. Patented internal eyebrows and optional tilted filter for maximum lens flare reduction.
0400-0455

MB-435 matte box
Ø143 mm

Advanced matte box. Up to 4 filters. One fully rotatable 4"x5,65" / 5.65"x5,65" filter frame, one non rotatable 4"x5,65" / 5.65"x5,65" filter frame, one fixed 4"x5,65" filter compartment in the hood, one 138 mm round filter (rotatable) in optional donut adapterring and a French flag. Patented internal eyebrows for maximum lens flare reduction.
0400-0435

MB-255 clip-on matte box
Ø114 mm

Advanced compact matte box. Up to 2 filters. One fully rotatable 4"x4" filter frame, one non rotatable 4"x4" filter frame and a French flag. Patented internal eyebrows for maximum lens flare reduction.
0200-0255

MB-215 clip-on matte box
Ø114 mm

Basic compact matte box. Up to 2 filters. One fully rotatable 4"x4" filter frame. One fixed 4"x4" filter compartment in the hood.
0200-0215

Top flags

MB-435 & MB-455

Standard flag (included with MB-435 & MB-455), 378 x 125 mm
0430-0003

Wide flag, 510 x 154 mm

0430-0001

Wide flag, foldable, 510 x 154 mm

0430-0002

MB-255

Standard flag (included with MB-255), 310 x 157 mm

0330-0001

Wide flag, 420 x 157 mm

0330-0002

MB-215

Including hinge, 282 x 130 mm.

0250-0050

Side flag kits

MB-455

Two side flags, dual extendable. (Top flag not included, please order separately 0430-0001 or 0430-0002).

0440-0001

MB-435

Two side flags and a top flag.

0440-0002

MB-255

Two side flags, with hinges and a top flag. **0340-0001**

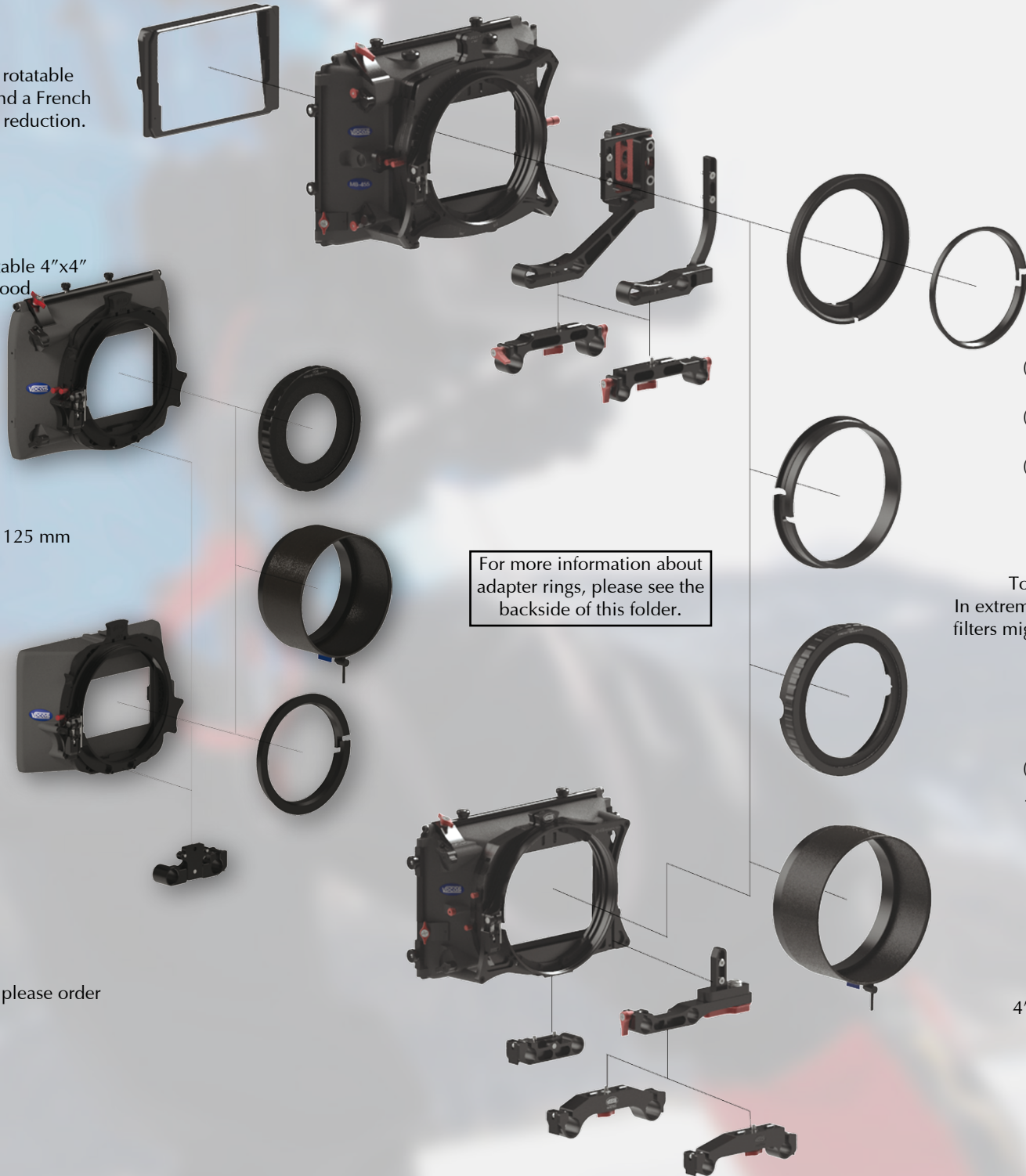


Tom Curran about Vocas matte box MB 435:

"The very first thing I would like to say that its build to a very high quality, but at the same time they managed to keep it very light weight. The Vocas MB-435 had a very interesting internal top and bottom eyebrow system that is built-in the matte box! (also available on the MB-255 and MB-455, red.)

This was perfect for fast twist to block out an annoying flare,

especially when time was against us to get the shot. It was extremely flexible and helped me to solve problems very quickly instead of having to place top flags or black tape to cover the flares and glares. In my opinion every professional camera-man needs a matte box and the best choice will be one of the Vocas matte boxes with integrated 'eyebrows'. (patented by Vocas, red.)



For more information about adapter rings, please see the backside of this folder.

Swing away brackets

To use either the MB-435 or MB-455 on 15 mm LW rails and to enable easy lens changes these brackets are needed.

Swing away MB-455

0460-0200

Swing away MB-435

0460-0600

Adapters for other rails

19 mm rails MB-455

0460-0250

15 mm studio rails MB-455

0460-0260

19 mm rails MB-435

0460-0650

15 mm studio rails MB-435

0460-0660

Bars adapters

To use any of the above matte boxes on 15 mm LW rails a bars adapter is needed. All are height adjustable.

Bars adapter MB-455

0460-0010

Bars adapter MB-435

0460-0500

Bars adapter MB-255 & MB-215

0360-0100

Filter frames

MB-455

4"x5,65", for horizontal front filterslot, (1 pc. included with MB-455) **0410-0001**

4x4" / 4x5,65" horizontal combo, (1 pc. included with MB-455) **0410-0002**

5,65"x5,65" / 4"x5,65" vertical combo, (1 pc. included with MB-455) **0410-0003**

4"x4" **0410-0006**

5"x5" **0410-0007**

4"x5,65" vertical **0410-0008**

4"x5,65" horizontal, tilted frame.

To be attached in the front of the MB-455.

In extreme lighting situations, reflections between filters might occur. By tilting one filter slightly this can be prevented. **0410-0015**

MB-435

4"x4" / 4"x5,65" combo

(2 pc. included with MB-435) **0410-0010**

5,65"x5,65" and 4x5.65" vertical combo **0410-0011**

5"x5" **0410-0012**

4"x4" **0410-0013**

4"x5,65" vertical **0410-0014**

MB-255 & MB-215

3"X3" **0310-0008**

4"X4", (included with MB-255 & MB-215)

0310-0001

4"X5" **0310-0007**

4"X5,65" **0310-0004**

