

## Turn Your Display Into a Mondopad

Connect MondoCenter to any display device to visually present, capture and share ideas with participants in the room and around the world. It's a Mondopad without the "pad."



- Add the functionality of a Mondopad to your projector or other display device
- Intel i7 PC running Windows 7 Pro
- Digital interactive whiteboard and document annotation
- Business-class video conferencing (webcam and microphone required)
- Full version of Microsoft Office is pre-installed
- A great fit with an InFocus interactive projector
- Bluetooth 4.0 enabled to easily connect peripheral devices
- Mountable on a display or rack

### Supercharge Your Display

MondoCenter, paired with your display device and peripherals, changes the way people interact with information, collaborate and connect. Meetings and classroom lessons are more efficient, content is more immersive, and audiences are more engaged.

### Upgrade Your Conference Room

MondoCenter adds power and flexibility to your display device to create an expandable, portable, cost effective collaboration solution.

- Built around industry standards and leading technologies from Intel and Microsoft, it fits right into your IT environment and processes
- Securely monitor and manage the MondoCenter from anywhere
- Pair it with an InFocus RealCam PTZ camera and Thunder speakerphone for business-class video conferencing

### Video Connect to the World

InFocus 121 Video Calling service is free for the first year, so you can have a video conference on your new MondoCenter right away. If you use an enterprise video conferencing system, you can collaborate using leading cloud, client and SIP video conferencing solutions.

- Add MondoCenter as a SIP end point on your video conference server or service
- Install your desktop client onto MondoCenter for your existing video conferencing system, just like you would a PC
- Works with major video conferencing platforms, such as Polycom, LifeSize, Cisco, and Tandberg

### Whiteboard and Annotation

Mondopad's whiteboard and annotation apps make it easy to brainstorm and capture and share ideas.

- A complete set of writing and drawing tools, pens, highlighters, shapes and lines are at your disposal
- Whiteboard drawings and notes on your meeting visuals can be collected, saved and emailed to meeting participants right from the MondoCenter

### Familiar Applications You Use Every Day

Sharing documents and visuals during a meeting is amazingly easy with the MondoCenter's simple and familiar folder structure.

- Add, remove and launch documents from the MondoCenter's View/Share folder
- Use the documents (PowerPoint, Word, Excel, PDF, JPGs and more) that you use every day
- Quickly switch between multiple Windows apps and the Mondopad app

### Connect, Share, View & Control Content from Any Device

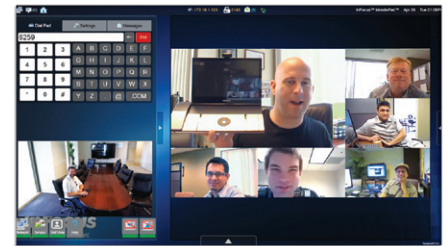
You and your colleagues can securely connect, share and collaborate with anyone, anywhere – making your meetings more collaborative, productive and sustainable.

- Securely connect MondoCenter to your network via its built-in WiFi so any authorized user of your network can share, view and control their visuals from their PC, tablet or smartphone
- MondoCenter's WiFi creates a wireless access point so guests in the room can easily deliver documents to the device

# MondoCenter Specifications\*

## INF-MCENTER2

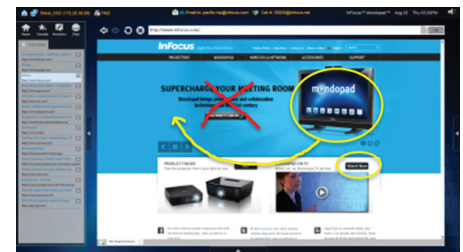
Processor	Intel® Core i7-4770T, Q87 chipset
Memory	8 GB RAM
Hard Drive	SSD 120GB
LAN (2x)	802.3 10/100/1000 Base-T with Wake on one LAN port
Wi-Fi	Dual band 802.11 a/b/g/n MIMO PCIe half mini card, 2.4 GHz and 5 GHz with Intel, AMT support
Input Connections	USB 2.0 x 7, 3.5mm microphone input, Ethernet (RJ45 x 2)
Output Connections	VGA, HDMI x 2, 3.5mm stereo audio out x 2, RS232
Bluetooth	4.0
Operating System	Windows 7 Pro 64bit, compatible with Windows 8
Included Software	Microsoft Office Home & Business, Mondopad interface software
Webcam Compatibility	Up to 1080p and MJPEG USB webcams are compatible
Accessories Included**	HDMI cable, flat panel mounting bracket, wireless keyboard (where allowed), wireless mouse (where allowed), power cord, remote, documentation
Warranty	1 year
Shipping Weight	10.2 lbs / 4.6 kg
Shipping Dimensions	17 x 17 x 6 in / 432 x 432 x 152 mm
Operating Conditions	41 to 95°F at 0 to 10K ft / 5 to 35°C at 0 to 3,048 m
Noise	< 40dBA @ 77°F
Energy Star	5.1
Certifications	United States (FCC, UL), Europe (CE), Australia (RCM), Brazil (ANATEL), Canada (IC, FCC, cUL), Chile (SUBTEL), China (CCC, CMIT), Columbia, Costa Rica, India (WPC), Indonesia (PLG), Malaysia (cert required), Mexico (NOM, SCT, Energy Consumption label), New Zealand (C-tick), Panama, Peru (MTC), Puerto Rico (FCC, UL), Saudi Arabia (SASO, CITC), Singapore (PSB, IDA), Taiwan (BMSI, NCC), United Arab Emirates (TRA)



Video Conferencing



Whiteboard and Annotation



Web Browsing with Annotation



MondoCenter Front



MondoCenter Back

\* Product specifications, terms, and offerings are subject to change at any time without notice.

\*\* Keyboard and/or mouse may not be shipped to all countries.

©2014 InFocus Corporation. All rights reserved. Specifications are subject to change without further notice. InFocus, InFocus Collaboration That Works, Mondopad and MondoCenter are either trademarks or registered trademarks of InFocus Corporation in the United States and other countries. All trademarks are used with permission or are for identification purposes only and are the property of their respective companies. InFocus\_MondoCenter\_Datasheet-EN-14AUG14.

**InFocus**  
Collaboration That Works

[www.infocus.com](http://www.infocus.com)

**INFOCUS CORPORATE HEADQUARTERS**  
13190 SW 68th Parkway  
Portland, Oregon 97223-8368, USA  
Phone: (1) 503-207-4700  
Toll Free: (1) 877-388-8385  
Fax: (1) 503-207-4707