

MX-890 Color LCD Screen Owner's Manual



This remote control was Custom Programmed for you by:

For questions about your Custom Programming call:

Custom Programming of a complex home theater and/or a multi-room system is one of the most challenging tasks within an audio/video installation. It involves an intimate knowledge of how the components interact and exact details on the proper sequences of control.

Only a Complete Control dealer has the requisite experience and training to quickly and effectively customize a remote control for true automated operation.

Congratulations on your choice!

MX-890 Owner's Manual © 2012 - 2013 Universal Remote Control, Inc.

The information in this Owner's Manual is copyright protected. No part of this manual may be copied or reproduced in any form without prior written consent from Universal Remote Control, Inc.

UNIVERSAL REMOTE CONTROL, INC. SHALL NOT BE LIABLE FOR OPERATIONAL, TECHNICAL OR EDITORIAL ERRORS/OMISSIONS MADE IN THIS MANUAL.

The information in this Owner's Manual may be subject to change without prior notice.

Complete Control is a registered trademark of Universal Remote Control, Inc.

URC - Control the Experience is a registered trademark of Universal Remote Control, Inc.

All other brand or product names are trademarks or registered trademarks of their respective companies or organizations.



500 Mamaroneck Avenue, Harrison, NY 10528
Phone: (914) 835-4484 Fax: (914) 835-4532

TABLE OF CONTENTS

Congratulations!	1
Using the MX-890	2
Connecting the Battery Pack	3
Using the Charging Base	3
Resetting the MX-890	3
Displaying the Settings Screen	4
Sleep Settings	5
System	5
Brightness	5
Power	6
Button Light	6
Date and Time	6
Sound	7
Pickup Settings	7
Factory Default	7
Exit	7
Maintaining Your MX-890	8
Specifications	8
Limited Warranty Statement	9
End User Agreement	11
Federal Communication Commission Interference Statement	12

Congratulations

Thank you for purchasing the Complete Control MX-890 color LCD screen universal remote control. This remote can directly control your devices via IR or wirelessly control your devices throughout the home using an RF base station. Controlling your home is simple with the MX-890 remote.

Brilliant 2" color LCD screen with pickup sensor

The MX-890 has a programmable 2" color LCD screen. When the remote is picked up, the color LCD screen as well as the remote buttons, will light up.

Control devices using ultra-reliable narrow band RF

The MX-890 can communicate directly to RF base stations, such as the MRX-1/RFX-250, MRF-350 and the MRF-260. It also natively communicates to URC Lighting via RF. This gives the MX-890 the ability to control your system without being in direct line-of-sight.

Identify a remote using Room Labels

Use the included room labels to keep track of each room's MX-890. No longer will you have the kitchen remote in the living room; simply add a room label for easy identification.

Charging Base Included..no need for batteries

There is no need to constantly purchase batteries, just place the remote on the charging base and recharge the battery...DONE!

Fast setup of complex systems via Complete Control PC Program

To fully automate your audio/video system, the programmer must have detailed knowledge of each component and how the system is connected and operated. Only a trained and certified professional audio/video installer can program an MX-890 remote control in a timely and efficient manner.

User interface customizable for any activity

Each button is customizable for activities such as Watch TV or Listen to Radio. These activities can contain multiple commands (macros) which enable a single button press to turn the needed devices ON or OFF. Only a trained and certified professional audio/video installer can program an MX-890 remote control in a timely and efficient manner.

Using the MX-890

The MX-890's main pages display the activities and devices in your system. Press the MAIN button to view your devices or the activities placed here by your custom professional. Large systems may have more than one page. Press either of the PAGE buttons if you don't see all your devices. Press any LCD hard button, to select an activity or a device. The screen will change to display the buttons you need for that activity/device. The PAGE buttons may reveal additional buttons for some devices and activities.

When you would like to control another device, press the MAIN page button and select a new device button.

The **Power** button turns your system ON.

Press either of the **Page** buttons to see any other available choices.

The **Volume** and **Mute** buttons always control the sound regardless of what screen is displayed.

The **Transport buttons (Play, Stop, Rec, Skip-, Skip+, FF, REW and Pause)** operate when the selected device requires them. When watching Cable TV, use the number keypad to enter channel numbers. When listening to a CD, the number keypad enters track numbers.

The **Color** buttons work to control additional options provided by other devices like Cable, Satellite or Blu-Ray.

The **System** button turns all your equipment OFF.

When pressed, these **LCD hard buttons** execute the activity/command/device on the associated icon.

The **Main** button accesses all programmed activities and devices.

The **Channel** and **Previous Channel** buttons will change channels when you have selected devices like CABLE.

The **Navigation** buttons enable you to navigate on screen guides and menus with ease.

The **Number keypad** enters numbers for the devices you've selected. When watching Cable TV, use the number keypad to enter channel numbers. When listening to a CD, the number keypad enters track numbers.



Connecting the Battery Pack

Unlock the rear cover by pressing down on the spring lock at the top of the cover. Remove the cover. For shipment from the factory, the battery is left out of the MX-890. Place the battery into the battery compartment, making sure you align the contacts on the battery to the contacts on the MX-890. The battery will snap into place when aligned properly. Replace the cover and snap it into place.

Using the Charging Base

Plug the 5V adapter into a power outlet and into the back of the charging base.

Gently place the MX-890 into the cradle of the charging base. It automatically aligns itself to the contacts on the charging base.

The Status light should immediately light. Red indicates that it is charging. Blue shows that it is fully charged. There is no harm in leaving the MX-890 on its charging base whenever it is not in use.

Optionally, the 5V power adapter can be plugged directly to the bottom of the MX-890.



Red indicates charging. Blue that the remote is fully charged.

Resetting the MX-890

Normally, resetting the MX-890 is not necessary. However, if you notice unusual behavior, press the reset button within the battery compartment. Press the Reset button to cycle the MX-890's power and reboot the unit.

Displaying the Settings Screen

You can enter the Settings menu by pressing and holding the MAIN and ENT button for three seconds. The MX-890 will timeout after it is idle for 30 seconds and return to the previous setting or Main screen. There are two pages of Settings screens. Select a setting by pressing a button on the LCD screen. Press either of the PAGE buttons to access the other page. To go back a step or to get out of the settings screen, press the MAIN button.

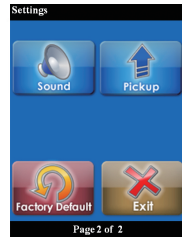
There are two pages of Settings screen. To access the other page, press either of the PAGE buttons.



Page buttons reveal the rest of the settings.



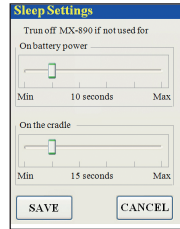
Page 1 of the Settings Screen



Page 2 of the Settings Screen

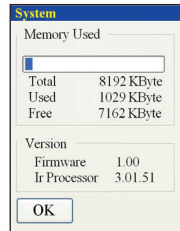
Sleep Settings

Conserve energy by configuring the MX-890 to fall a sleep after a specified amount of time. Select an amount of time by pressing the left or right hard buttons, to adjust the slide bar.



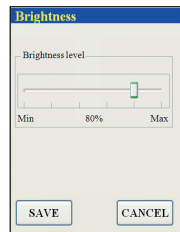
System

The System Information screen displays data about your MX-890's operating system, memory etc.



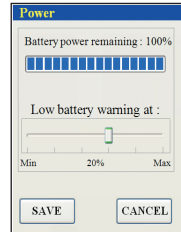
Brightness

Adjust the screen brightness by pressing the left or right hard buttons to move the slider. Min (minimum) is the dimmest setting and Max (maximum) is the brightest setting.



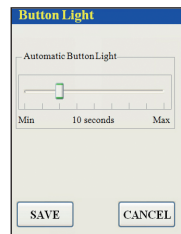
Power

You can display the remaining charge by selecting Power. Press the left or right hard buttons to move the slider. MIN or MAX adjusts the timing of the low battery warning notification.



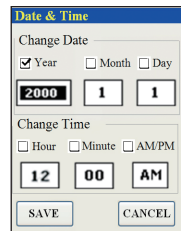
Button Light

You can adjust the brightness of the LEDs that backlight the buttons of the MX-890. Press the left hard button to dim or press the right hard button to brighten the backlighting.



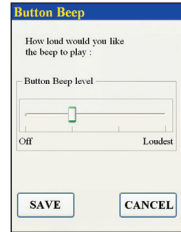
Date and Time

Your MX-890 may have been programmed to display the date or time on the LCD screen. If you need to, press the left or right hard buttons to adjust the time displayed by changing the settings on this screen.



Sound

Adjust the button beep level to Off or Loudest by pressing the left or right hard buttons.



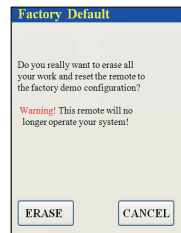
Pickup Settings

You can set your MX-890 to turn on when picked up. Adjust the Pickup Sensor by pressing the associated hard button adjacent to the ON or OFF check box.



Factory Default

WARNING! Only use this button when instructed to by Technical Support. It resets the memory of the MX-890 to the factory condition. All your programming will be lost! Press and hold the Erase button to return the remote to its factory condition.



Exit

When you have finished adjusting Settings, simply tap the Exit button to return to normal operation.

Maintaining Your MX-890

Keep it away from extreme cold or heat. The MX-890 is not waterproof. Do not use it in any location that is damp or wet. If you spill water on it, take out the battery pack and let the MX-890 dry for 48 hours before powering it up again. If you spill coffee or another beverage on it, clean it with distilled water. Make sure no water gets inside the MX-890. Don't drop the MX-890 or impact it against anything.

Use a soft, damp cloth to clean the screen. Do not use anything abrasive and don't use too much water, some might leak into the interior.

Precautions & Information: Rechargeable Lithium Ion Batteries

If you will not be using your remote control for an extended period of time, be sure to remove the battery. Do not attempt to disassemble, alter or apply heat to the battery. Use care to avoid dropping the battery or subjecting it to severe impact that could damage the case. The battery should not be immersed in water. Lithium Ion batteries are recyclable. For the address of a recycle drop-off location near you call toll free 1-800-822-8837 or visit <http://www.rbc.com>

Specifications

CPU : ARM 32-bit Cortex-M3 (72MHz)

Memory : 8Mbit SRAM, 64Mbit Flash

Customization Capability : Up to 200 devices and up to 10 pages each for a total of 2000 pages.

Learning Capability : Standard frequencies (15kHz to 460kHz)

Macro Capability : Up to 255 steps each

IR Range (Line of Sight via Infrared) : 30-50 feet, depending on the environment

RF Range (radio frequency) : 50 to 100 feet, depending upon the environment

RF Frequency : 418 MHz

Weight : 5.73 ounces (with battery loaded)

Size : 8.46"H x 1.97"W x 1.02" D

Battery : Lithium Ion rechargeable battery included

Limited Warranty Statement

1. Limited Warranty and Disclaimers

Universal Remote Control, Inc. ("URC") warrants that the URC equipment shall be free from defects in material and workmanship under normal usage for one (1) year from purchase when such is purchased from URC. **This limited warranty is valid only in the United States of America.** URC warrants that the software will substantially conform in any material respect to its functional specifications at the time of delivery. URC SHALL NOT BE LIABLE FOR OPERATIONAL, TECHNICAL OR EDITORIAL ERRORS AND/OR OMISSIONS MADE IN THE URC DOCUMENTATION. URC DOES NOT WARRANT THAT THE URC SOFTWARE IS BUG-FREE OR ERROR FREE OR THAT THERE ARE NO ERRORS/BUGS IN THE URC SOFTWARE.

URC warrants that at the time of purchase the URC equipment and the URC software complied with all applicable regulations and policies of the Federal Communications Commissions ("FCC") regarding electromagnetic interference caused by electronic/computing devices and to the extent that the URC equipment and/or the URC software fails to so comply, URC shall, at its own expense, take all reasonable measures to promptly cause such to comply.

URC equipment purchases from other than an authorized URC dealer or distributor are without warranty.

THIS LIMITED WARRANTY DOES NOT COVER TECHNICAL ASSISTANCE FOR HARDWARE OR SOFTWARE USAGE EXCEPT AS EXPRESSLY PROVIDED FOR HEREIN, THE EQUIPMENT, SOFTWARE AND DOCUMENTATION OF URC ARE SUPPLIED "AS IS" WITHOUT ANY WARRANTY, EXPRESS, STATUTORY OR IMPLIED, OF ANY KIND. TO THE MAXIMUM EXTENT PERMITTED BY APPLICABLE LAW, URC EXPRESSLY DISCLAIMS ALL WARRANTIES, EXPRESS, STATUTORY OR IMPLIED, INCLUDING BUT NOT LIMITED TO THE WARRANTIES OF MERCHANTABILITY AND FITNESS FOR A PARTICULAR PURPOSE. URC DOES NOT WARRANT, GUARANTEE, OR MAKE ANY REPRESENTATIONS REGARDING THE USE OF, OR THE RESULTS OF THE USE OF, THE EQUIPMENT, SOFTWARE OR DOCUMENTATION IN TERMS OF CORRECTNESS, ACCURACY, RELIABILITY OR OTHERWISE.

EXCEPT AS EXPRESSLY PROVIDED FOR HEREIN, TECHNICAL SERVICES ARE SUPPLIED "AS IS", WITHOUT ANY WARRANTY, EXPRESS, STATUTORY OR IMPLIED, OF ANY KIND. TO THE MAXIMUM EXTENT PERMITTED BY APPLICABLE LAW, URC EXPRESSLY DISCLAIMS ALL WARRANTIES, EXPRESS, STATUTORY OR IMPLIED, INCLUDING BUT NOT LIMITED TO THE WARRANTIES OF QUALITY OR REASONABLE

SKILL AND CARE, OR OUTCOME OR RESULTS. WITHOUT IN ANY WAY LIMITING THE GENERALITY OF THE OTHER PROVISIONS HEREIN, WARRANTY DOES NOT COVER: (I) DAMAGE FROM MISUSE, NEGLIGENCE OR ACTS OF NATURE, (II) MODIFICATIONS, (III) INTEGRATION WITH THIRD PARTY CONTENT (IV) BEYOND THE WARRANTY PERIOD AND/ OR FAILURE TO FOLLOW URC WARRANTY CLAIM PROCEDURE.

The warranty limitations and warranty disclaimers may not apply to end user in whole or in part, where such are restricted or excluded by applicable law and such shall apply to the maximum extent permitted by applicable law.

In the event of any warranty claim, URC will, at its sole option, repair the URC equipment using new or comparable rebuilt parts, or exchange the URC equipment for new or rebuilt equipment. **In the event of a defect, these are the end user's exclusive remedies.**

All the URC equipment returned for service, exchange or repair require an RGA number. To obtain an RGA number, you must complete a Return Request Form which you may obtain by calling (914) 835-4484 or contacting URC at returnrequest@universalremote.com. To obtain warranty service, end user must deliver the URC equipment, freight prepaid, in its original packaging or packaging affording adequate protection to URC at 420 Columbus Avenue, Valhalla, NY 10595. It is end user's responsibility to backup any macro programming, artwork, software or other materials that may have been programmed into the unit. It is likely that such data, software, or other materials will be lost during service and URC will not be responsible for any such damage or loss. A dated purchase receipt, bill of sale, installation contract or other verifiable proof of purchase is required. For the URC equipment support and other important information, please visit URC's website available at www.universalremote.com or call the Customer Service Center at (914) 835-4484.

This limited warranty only covers the URC equipment issues caused by defects in material or workmanship during ordinary consumer use. It does not cover product issues caused by any other reason, including but not limited to product issues due to commercial use, acts of God, third-party installation, misuse, limitations of technology, or modification of or to any part of the URC equipment. This limited warranty does not cover the URC equipment sold as used, as is, refurbished, so called "B stock" or consumables (such as batteries). This limited warranty is invalid if the factory applied serial number has been altered or removed from the URC equipment. **This limited warranty specifically excludes the URC equipment sold by unauthorized resellers.**

With the exception of URC's IR-only, broad-based consumer remotes, none of URC's PC programmable remotes or any of our Total Control® whole-house

equipment are authorized for online internet sales. Buying URC's PC programmable remotes or any of our Total Control® whole-house equipment online means buying equipment that does not have a URC's limited warranty. Such equipment is not eligible for URC tech support or software support, either.

2. URC'S Limitations of Liability

IN NO EVENT SHALL URC BE LIABLE FOR INDIRECT, SPECIAL, INCIDENTAL, EXEMPLARY, PUNITIVE OR CONSEQUENTIAL DAMAGES OF ANY KIND OR LOSS OF PROFITS OR BUSINESS OPPORTUNITY, EVEN IF URC IS ADVISED OF THE POSSIBILITY OF SUCH DAMAGES.

IN NO EVENT SHALL URC BE LIABLE FOR LOSS OF OR DAMAGE TO DATA, COMPUTER SYSTEMS OR COMPUTER PROGRAMS. URC'S LIABILITY, IF ANY, FOR DIRECT DAMAGES OF ANY FORM SHALL BE LIMITED TO ACTUAL DAMAGES, NOT IN EXCESS OF AMOUNTS PAID BY END USER FOR THE URC EQUIPMENT.

IN NO EVENT SHALL URC BE LIABLE FOR ANY EVENTS BEYOND ITS CONTROL, INCLUDING ANY INSTANCE OF FORCE MAJEURE.

IN NO EVENT SHALL URC BE LIABLE FOR THE ACTS OR OMISSIONS OF END USER OR ANY THIRD PARTY.

THE LIMITATIONS OF LIABILITY MAY NOT APPLY TO END USER IN WHOLE OR IN PART, WHERE SUCH ARE RESTRICTED LIMITED OR EXCLUDED BY APPLICABLE LAW AND SUCH SHALL APPLY TO THE MAXIMUM EXTENT PERMITTED BY APPLICABLE LAW.

URC SHALL NOT BE HELD RESPONSIBLE FOR THE STATEMENTS MADE BY OTHERS.

SOME STATES OR JURISDICTIONS DO NOT ALLOW THE EXCLUSION OR LIMITATION OF INCIDENTAL OR CONSEQUENTIAL DAMAGES, OR ALLOW LIMITATIONS ON HOW LONG AN IMPLIED WARRANTY LASTS, SO THE ABOVE LIMITATIONS OR EXCLUSIONS MAY NOT APPLY TO END USER. THIS LIMITED WARRANTY GIVES END USER SPECIFIC LEGAL RIGHTS AND END USER MAY HAVE OTHER RIGHTS WHICH VARY FROM STATE TO STATE OR JURISDICTION TO JURISDICTION.

End User Agreement

The terms and conditions of the End User Agreement available at www.universalremote.com/eua.php shall apply.

Federal Communication Commission Interference Statement

This equipment has been tested and found to comply with the limits for a Class B digital device, pursuant to part 15 of the FCC Rules. These limits are designed to provide reasonable protection against harmful interference in a residential installation. This equipment generates, uses and can radiate radio frequency energy and, if not installed and used in accordance with the instructions, may cause harmful interference to radio communications. However, there is no guarantee that interference will not occur in a particular installation. If this equipment does cause harmful interference to radio or television reception, which can be determined by turning the equipment off and on, the user is encouraged to try to correct the interference by one more of the following measures:

- ◆ Reorient or relocate the receiving antenna.
- ◆ Increase the separation between the equipment and receiver.
- ◆ Connect the equipment into an outlet on a circuit different from that to which the receiver is connected.
- ◆ Consult the dealer or an experienced radio/TV technician for help.

Warning!

Changes or modifications not expressly approved by the manufacturer could void the user's authority to operate the equipment.

Note : The manufacturer is not responsible for any Radio or TV interference caused by unauthorized modifications to this equipment. Such modifications could void the user's authority to operate the equipment.

FCC Caution

This device complies with Part 15 of the FCC Rules. Operation is subject to the following two conditions: (1) this device may not cause harmful interference, and (2) this device must accept any interference received, including interference that may cause undesired operation.

Any changes or modifications not expressly approved by the party responsible for compliance could void the authority to operate equipment.



500 Mamaroneck Avenue, Harrison, NY 10528

Phone: (914) 835-4484 Fax: (914) 835-4532

www.universalremote.com



OCE-0142A Rev 01