

# Marshall Electronics

Broadcast Multimedia Division



PRODUCT CATALOG **2013**

**LCD RACKS** 05-14

- MD (Modular Design) Monitors
- In-Monitor Display (IMD) Monitors
- Dual Link / Waveform Monitors
- Quad Viewer Monitors
- ORCHID® Monitors
- Super Transflective Outdoor Monitors
- LYNX™ Monitors

**NETWORK CONTROL BOX** 14

**LCD MONITORS** 15-25

- MD (Modular Design) Monitors
- In-Monitor Display (IMD) Monitors
- Dual Link / Waveform Monitors
- Quad Viewer Monitors
- 3D Monitor
- ORCHID® Monitors
- Super Transflective Outdoor Monitors
- LYNX™ Monitors

**WIRELESS MONITORS / ACCESSORIES** 26

**OUTDOOR BROADCAST CAMERAS** 27

**VIDEO PROCESSORS** 28-29

- Multi-Viewer System
- Dual Link/Waveform Processor
- Quad Viewer Processor with HD-SDI

**AUDIO MONITORS** 30-31

Analog, Digital

**ACCESSORIES** 32-33

- Sun Hoods, Monitor Mounts, Stands,
- Cables, Battery Adapter Plates,
- MD Video Input Modules,
- ORCHID™ Accessories:
- 3G-SDI to HDMI Cross Converter, Color Probe

**MXL® BROADCAST MICROPHONES** 34-35

- Interview Kits, Shotgun Mics, Boundary Mics,
- Broadcast Dynamic Mics, Accessories

WIRELESS MONITORS

**V-LCD70MDW & V-LCD90MDW**

Wireless Monitor Systems and Accessories

26



IR PTZ CAMERA

**VS-WC202B-HDSDI**

Full HD Mega-pixel Rugged IR PTZ Camera

27



RASTERISER

**DLWR-3G**

Dual Link / Waveform Processor with 3G SDI support

29



CALIBRATION



**OR-XDI**

Orchid OR-CP2 Color Probe

33

RACKS & MONITORS

**V-R902-DLW**

Dual 9" Rack Mountable Dual Link / Waveform monitor with 3G SDI Support

09





**V-R173-IMD-3GTE**  
17.3" IMD Monitor with 3GSDI Support

12



**V-MD173**  
17.3" Monitor with Modular Inputs and Network Control

12



**V-MD201N**  
20" Monitor with Modular Inputs and Network Control

14



**V-MD241**  
24" Monitor with Modular Inputs and Network Control

24



**QV241-3G (with Ethernet link)**  
24" IMD Quadviewer with Network Control and 3GSDI Support

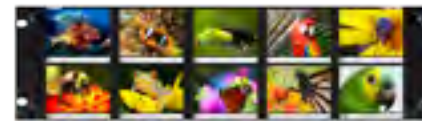
24



**QVW-2710 (with Ethernet link)**  
27", 2560 x 1440 Resolution IMD Quadviewer with Network Control. 2K and 4K compatible

25

**V-R35P**



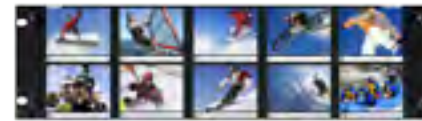
- High Resolution LCD Panels
- Active Loop-Through Outputs
- NTSC/PAL Auto-Recognition
- Blue screen when signal not present

Physical Specs							
10	3.5"	4:3	320x234	250	350:1	3	2.5"
# OF SCREENS	SCREEN SIZE	ASPECT RATIO	RESOLUTION	BRIGHT	CONTRAST	RU	DEPTH



Inputs per Screen

**V-R35P-SDI**



- 320 x 234 pixels
- Automatic NTSC/PAL video signal detection screen
- Self-Terminated video inputs with active loop-through

Physical Specs							
10	3.5"	4:3	320x234	250	350:1	3	2.5"
# OF SCREENS	SCREEN SIZE	ASPECT RATIO	RESOLUTION	BRIGHT	CONTRAST	RU	DEPTH



Inputs per Screen

**V-R43P**



- 480 x 234 pixels
- Ultra-compact design fits in EIA standard rack 2U high
- Each screen has 2 Composite Video inputs with active loop-through feature

Physical Specs							
3	4"	4:3	480x234	250	200:1	2	1.9"
# OF SCREENS	SCREEN SIZE	ASPECT RATIO	RESOLUTION	BRIGHT	CONTRAST	RU	DEPTH



Inputs per Screen

Features

**V-R44P**



- 480 x 234 pixels
- Ultra bright panels with 300 cd/m<sup>2</sup> luminance
- NTSC/PAL auto recognition
- Ultra-compact design fits in EIA standard rack 2U high

Physical Specs							
4	4"	4:3	480x234	250	250:1	2	1.9"
# OF SCREENS	SCREEN SIZE	ASPECT RATIO	RESOLUTION	BRIGHT	CONTRAST	RU	DEPTH



Inputs per Screen

Features

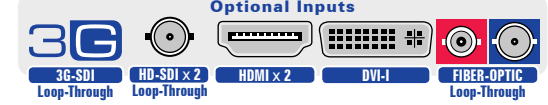
**V-MD434**



- Choose from a variety of inputs / outputs
- Four 800 x 480 LCDs in one single configuration
- One available slot per screen
- Slim 2RU Design



Physical Specs							
4	4.3"	16:10	800x480	200	400:1	2	1.23"
# OF SCREENS	SCREEN SIZE	ASPECT RATIO	RESOLUTION	BRIGHT	CONTRAST	RU	DEPTH



Optional Inputs

Features

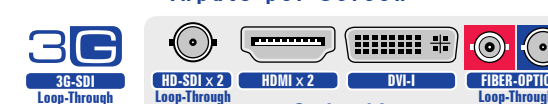
**V-MD434-3GSDI**



- Pre-configured with 3G-SDI Inputs
- Four 800 x 480 LCDs
- One available slot per screen
- Slim 2RU Design



Physical Specs							
4	4.3"	16:10	800x480	200	400:1	2	1.23"
# OF SCREENS	SCREEN SIZE	ASPECT RATIO	RESOLUTION	BRIGHT	CONTRAST	RU	DEPTH



Optional Inputs

Features

**OR-434**



- Real-Time Waveform Monitor
- Real-Time Color Vectorscope
- Sixteen 64-segment Tri-color Audio Meters
- Tri-Color Tally Indicator



Physical Specs							
4	4.3"	16:10	800x480	200	400:1	2	2.4"
# OF SCREENS	SCREEN SIZE	ASPECT RATIO	RESOLUTION	BRIGHT	CONTRAST	RU	DEPTH



Inputs per Screen

Features

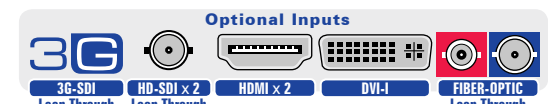
**V-MD503**



- Choose from a variety of inputs / outputs
- Three 800 x 480 LCDs
- One available slot per screen
- Slim 2RU Design



Physical Specs							
3	5"	16:9	800x480	300	600:1	3	1.23"
# OF SCREENS	SCREEN SIZE	ASPECT RATIO	RESOLUTION	BRIGHT	CONTRAST	RU	DEPTH



Optional Inputs

Features

**V-MD503-3GSDI**



- Pre-configured with 3G-SDI Inputs
- Three 800 x 480 LCDs
- One available slot per screen
- Slim 2RU Design



**Physical Specs**

<b>3</b> # OF SCREENS	<b>5"</b> SCREEN SIZE	<b>16:9</b> ASPECT RATIO	<b>800x480</b> RESOLUTION	<b>300</b> BRIGHT	<b>600:1</b> CONTRAST	<b>3</b> RU	<b>1.23"</b> DEPTH
--------------------------	--------------------------	-----------------------------	------------------------------	----------------------	--------------------------	----------------	-----------------------

**Inputs per Screen**

**Optional Inputs**

**Features**

3G-SDI Loop-Through, HD-SDI x 2 Loop-Through, HDMI x 2, DVI-I, FIBER-OPTIC Loop-Through, NETWORKING, TALLY

**OR-503**



- Real-Time Waveform Monitor
- Real-Time Color Vectorscope
- Sixteen 64-segment Tri-color Audio Meters
- Tri-Color Tally Indicator



**Physical Specs**

<b>3</b> # OF SCREENS	<b>5"</b> SCREEN SIZE	<b>16:10</b> ASPECT RATIO	<b>800x480</b> RESOLUTION	<b>300</b> BRIGHT	<b>500:1</b> CONTRAST	<b>3</b> RU	<b>2.4"</b> DEPTH
--------------------------	--------------------------	------------------------------	------------------------------	----------------------	--------------------------	----------------	----------------------

**Inputs per Screen**

**Optional Inputs**

**Features**

HD-SDI x 2 Loop-Through, HEADPHONE Line OUT, AUDIO, AUDIO LEVEL, WAVEFORM, VECTORSCOPE, TALLY

**V-MD563**



- Choose from a variety of inputs / outputs
- Two available slot per screen
- Three high resolution 1280 x 800 LCDs
- Slim 3RU Design



**Physical Specs**

<b>3</b> # OF SCREENS	<b>5.6"</b> SCREEN SIZE	<b>16:10</b> ASPECT RATIO	<b>1280x800</b> RESOLUTION	<b>200</b> BRIGHT	<b>400:1</b> CONTRAST	<b>3</b> RU	<b>1.3"</b> DEPTH
--------------------------	----------------------------	------------------------------	-------------------------------	----------------------	--------------------------	----------------	----------------------

**Inputs per Screen**

**Optional Inputs**

**Features**

COMPOSITE Loop-Through, COMPONENT Loop-Through, 3G-SDI Loop-Through, HD-SDI x 2 Loop-Through, HDMI x 2, DVI-I, FIBER-OPTIC Loop-Through, NETWORKING, TALLY

**V-R573P**



- 640 x 480 resolution
- Low power consumption and heat dissipation
- Two composite video inputs per monitor with active loop-through
- Individual color, tint, brightness, and contrast controls

**Physical Specs**

<b>3</b> # OF SCREENS	<b>5.7"</b> SCREEN SIZE	<b>4:3</b> ASPECT RATIO	<b>640x480</b> RESOLUTION	<b>400</b> BRIGHT	<b>600:1</b> CONTRAST	<b>3</b> RU	<b>2.5"</b> DEPTH
--------------------------	----------------------------	----------------------------	------------------------------	----------------------	--------------------------	----------------	----------------------

**Inputs per Screen**

**Optional Inputs**

**Features**

COMPOSITE x 2 Loop-Through, TALLY

**V-R573P-SDI**



- 640 x 480 resolution
- One SDI input per monitor with active loop-through
- One Composite video input per monitor with active loop-through
- Low power consumption and heat dissipation

**Physical Specs**

<b>3</b> # OF SCREENS	<b>5.7"</b> SCREEN SIZE	<b>4:3</b> ASPECT RATIO	<b>640x480</b> RESOLUTION	<b>400</b> BRIGHT	<b>600:1</b> CONTRAST	<b>3</b> RU	<b>2.5"</b> DEPTH
--------------------------	----------------------------	----------------------------	------------------------------	----------------------	--------------------------	----------------	----------------------

**Inputs per Screen**

**Optional Inputs**

**Features**

COMPOSITE Loop-Through, SDI Loop-Through, TALLY

**V-R653P-HDSDI**



- Three high resolution 6.5-inch screens
- 100% digital processing
- High resolution scaling of all images
- Wide viewing angle

**Physical Specs**

<b>3</b> # OF SCREENS	<b>6.5"</b> SCREEN SIZE	<b>16:9</b> ASPECT RATIO	<b>800x480</b> RESOLUTION	<b>500</b> BRIGHT	<b>500:1</b> CONTRAST	<b>3</b> RU	<b>2.5"</b> DEPTH
--------------------------	----------------------------	-----------------------------	------------------------------	----------------------	--------------------------	----------------	----------------------

**Inputs per Screen**

**Optional Inputs**

**Features**

HD-SDI Loop-Through, TALLY

**V-R653-IMD-3GTE**



- No need for external Under Monitor Display
- High resolution 1024 x 768 screens
- On-Screen Audio Presence Indicator
- On-Screen Video Time Code



**Physical Specs**

<b>3</b> # OF SCREENS	<b>6.5"</b> SCREEN SIZE	<b>4:3</b> ASPECT RATIO	<b>1024x768</b> RESOLUTION	<b>560</b> BRIGHT	<b>500:1</b> CONTRAST	<b>3</b> RU	<b>2.6"</b> DEPTH
--------------------------	----------------------------	----------------------------	-------------------------------	----------------------	--------------------------	----------------	----------------------

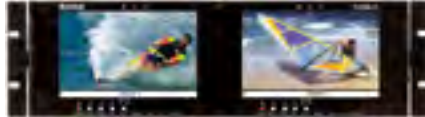
**Inputs per Screen**

**Optional Inputs**

**Features**

3G-SDI Loop-Through, RS-422 CONTROL, TALLY, CC 608 CLOSED CAPTION \*Line 21 captions not supported

**V-R72DP-2C**



- 7-inch widescreen panels
- 800 x 480 resolution
- 100% digital processing
- Analog signals converted to 10-bit digital

**Physical Specs**

<b>2</b> # OF SCREENS	<b>7"</b> SCREEN SIZE	<b>16:9</b> ASPECT RATIO	<b>800x480</b> RESOLUTION	<b>380</b> BRIGHT	<b>400:1</b> CONTRAST	<b>3</b> RU	<b>2.5"</b> DEPTH
--------------------------	--------------------------	-----------------------------	------------------------------	----------------------	--------------------------	----------------	----------------------

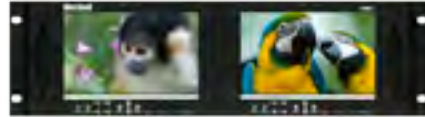
**Inputs per Screen**

**Optional Inputs**

**Features**

COMPOSITE x 2 Loop-Through, TALLY

**V-MD72**



- Choose from a variety of inputs / outputs
- Two 800 x 480 LCDs
- One available slot per screen
- Slim 3RU Design



**Physical Specs**

<b>2</b> # OF SCREENS	<b>7"</b> SCREEN SIZE	<b>16:10</b> ASPECT RATIO	<b>800x480</b> RESOLUTION	<b>450</b> BRIGHT	<b>600:1</b> CONTRAST	<b>3</b> RU	<b>1.2"</b> DEPTH
--------------------------	--------------------------	------------------------------	------------------------------	----------------------	--------------------------	----------------	----------------------

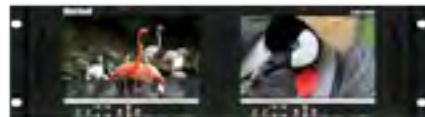
**Inputs per Screen**

**Optional Inputs**

**Features**

3G-SDI Loop-Through, HD-SDI x 2 Loop-Through, HDMI x 2, DVI-I, FIBER-OPTIC Loop-Through, NETWORKING, TALLY

**V-MD72-3GSDI**



- Choose from a variety of inputs / outputs
- Two 800 x 480 LCDs
- One available slot per screen
- Pre-configured with 3G-SDI Modules



**Physical Specs**

<b>2</b> # OF SCREENS	<b>7"</b> SCREEN SIZE	<b>16:10</b> ASPECT RATIO	<b>800x480</b> RESOLUTION	<b>450</b> BRIGHT	<b>600:1</b> CONTRAST	<b>3</b> RU	<b>1.2"</b> DEPTH
--------------------------	--------------------------	------------------------------	------------------------------	----------------------	--------------------------	----------------	----------------------

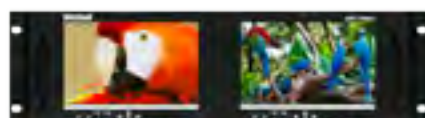
**Inputs per Screen**

**Optional Inputs**

**Features**

3G-SDI x 2 Loop-Through, HD-SDI x 2 Loop-Through, HDMI x 2, DVI-I, FIBER-OPTIC Loop-Through, NETWORKING, TALLY

**V-MD72-HDSDIx2**



- Choose from a variety of inputs / outputs
- Two 800 x 480 LCDs
- One available slot per screen
- Pre-configured with dual HD-SDI Modules



**Physical Specs**

<b>2</b> # OF SCREENS	<b>7"</b> SCREEN SIZE	<b>16:10</b> ASPECT RATIO	<b>800x480</b> RESOLUTION	<b>450</b> BRIGHT	<b>600:1</b> CONTRAST	<b>3</b> RU	<b>1.2"</b> DEPTH
--------------------------	--------------------------	------------------------------	------------------------------	----------------------	--------------------------	----------------	----------------------

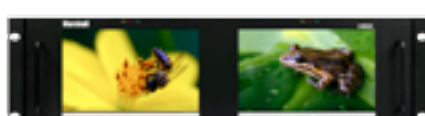
**Inputs per Screen**

**Optional Inputs**

**Features**

HD-SDI x 2 Loop-Through, 3G-SDI Loop-Through, HDMI x 2, DVI-I, FIBER-OPTIC Loop-Through, NETWORKING, TALLY

**V-MD702**



- Choose from a variety of inputs / outputs
- Two 800 x 480 LCDs
- One available slot per screen
- Slim 3RU Design



**Physical Specs**

<b>2</b> # OF SCREENS	<b>7"</b> SCREEN SIZE	<b>16:10</b> ASPECT RATIO	<b>800x480</b> RESOLUTION	<b>450</b> BRIGHT	<b>600:1</b> CONTRAST	<b>3</b> RU	<b>1.2"</b> DEPTH
--------------------------	--------------------------	------------------------------	------------------------------	----------------------	--------------------------	----------------	----------------------

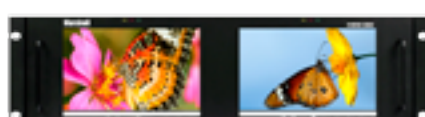
**Inputs per Screen**

**Optional Inputs**

**Features**

COMPOSITE Loop-Through, COMPONENT Loop-Through, 3G-SDI Loop-Through, HD-SDI x 2 Loop-Through, HDMI x 2, DVI-I, FIBER-OPTIC Loop-Through, NETWORKING, TALLY

**V-MD702-3GSDI**



- Choose from a variety of inputs / outputs
- Two 800 x 480 LCDs
- One available slot per screen
- Pre-configured with 3G-SDI Modules



**Physical Specs**

<b>2</b> # OF SCREENS	<b>7"</b> SCREEN SIZE	<b>16:10</b> ASPECT RATIO	<b>800x480</b> RESOLUTION	<b>450</b> BRIGHT	<b>600:1</b> CONTRAST	<b>3</b> RU	<b>1.2"</b> DEPTH
--------------------------	--------------------------	------------------------------	------------------------------	----------------------	--------------------------	----------------	----------------------

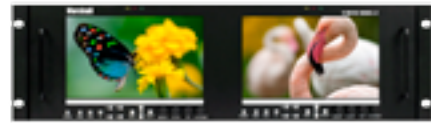
**Inputs per Screen**

**Optional Inputs**

**Features**

COMPOSITE Loop-Through, COMPONENT Loop-Through, 3G-SDI x 2 Loop-Through, HD-SDI x 2 Loop-Through, HDMI x 2, DVI-I, FIBER-OPTIC Loop-Through, NETWORKING, TALLY

V-MD702-HDSDIx2



- Choose from a variety of inputs / outputs
- Two 800 x 480 LCDs
- One available slot per screen
- Pre-configured with dual HD-SDI Modules



**Physical Specs**

# OF SCREENS	SCREEN SIZE	ASPECT RATIO	RESOLUTION	BRIGHT	CONTRAST	RU	DEPTH
2	7"	16:10	800x480	450	600:1	3	1.2"

**Inputs per Screen**

COMPOSITE Loop-Through, COMPONENT Loop-Through, HD-SDI x2 Loop-Through

**Optional Inputs**

3G-SDI Loop-Through, HDMI x2, DVI-I, FIBER-OPTIC Loop-Through

**Features**

NETWORKING, TALLY

OR-701A



- Full Range Stereo Speakers
- Real-Time Waveform Monitor
- Real-Time Color Vectorscope
- Sixteen 64-segment Tri-color Audio Meters



**Physical Specs**

# OF SCREENS	SCREEN SIZE	ASPECT RATIO	RESOLUTION	BRIGHT	CONTRAST	RU	DEPTH
1	7"	16:9	800x480	350	400:1	3	2.4"

**Inputs per Screen**

HD-SDI x2 Loop-Through, HEADPHONE, AUDIO Line OUT, SPEAKER

**Features**

AUDIO LEVEL, WAVEFORM, VECTORSCOPE, TALLY

OR-702



- Real-Time Waveform Monitor
- Real-Time Color Vectorscope
- Sixteen 64-segment Tri-color Audio Meters
- Tri-Color Tally Indicator



**Physical Specs**

# OF SCREENS	SCREEN SIZE	ASPECT RATIO	RESOLUTION	BRIGHT	CONTRAST	RU	DEPTH
2	7"	16:10	800x480	350	400:1	3	2.4"

**Inputs per Screen**

HD-SDI x2 Loop-Through

**Features**

HEADPHONE, AUDIO Line OUT, AUDIO LEVEL, WAVEFORM, VECTORSCOPE, TALLY

V-R842DP-AFHD



- High Definition 1024 x 768 screens
- 100% digital processing
- Analog signals converted to digital
- High resolution scaling of all images

**Physical Specs**

# OF SCREENS	SCREEN SIZE	ASPECT RATIO	RESOLUTION	BRIGHT	CONTRAST	RU	DEPTH
2	8.4"	4:3	1024x768	400	400:1	4	2.02"

**Inputs per Screen**

COMPOSITE Loop-Through, S-VIDEO Loop-Through, COMPONENT Loop-Through, DVI-I, PC-XGA, HD-SDI Loop-Through

**Features**

TALLY

V-R82SB-AFHD



- Super Transflective Outdoor Monitors
- Designed specifically for bright applications
- 8.4-inch 800 x 600 screens
- Pixel-to-Pixel native resolution scaling



**Physical Specs**

# OF SCREENS	SCREEN SIZE	ASPECT RATIO	RESOLUTION	BRIGHT	CONTRAST	RU	DEPTH
2	8.4"	4:3	800x600	650	600:1	4	2.02"

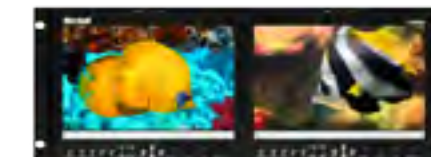
**Inputs per Screen**

COMPOSITE Loop-Through, S-VIDEO Loop-Through, COMPONENT Loop-Through, DVI-I, PC-XGA, HD-SDI Loop-Through

**Features**

TALLY

V-MD902



- Choose from a variety of inputs / outputs
- Two 1280 x 768 LCDs
- One available slot per screen
- Slim 4RU Design



**Physical Specs**

# OF SCREENS	SCREEN SIZE	ASPECT RATIO	RESOLUTION	BRIGHT	CONTRAST	RU	DEPTH
2	9"	16:9	1280x768	350	1000:1	4	2.1"

**Inputs per Screen**

COMPOSITE Loop-Through, COMPONENT Loop-Through

**Optional Inputs**

3G-SDI Loop-Through, HD-SDI x2 Loop-Through, HDMI x2, DVI-I, FIBER-OPTIC Loop-Through

**Features**

NETWORKING, TALLY

V-R902-DLW



- High Definition 1280 x 768 screens
- Waveform Monitor
- Vectorscope
- Closed Captioning
- 16 Channels of Audio Metering



**Physical Specs**

# OF SCREENS	SCREEN SIZE	ASPECT RATIO	RESOLUTION	BRIGHT	CONTRAST	RU	DEPTH
2	9"	16:9	1280x768	350	1000:1	4	2.1"

**Inputs**

3G-SDI x2 Loop-Through, DVI-I

**Features**

RS-422 CONTROL, WAVEFORM, VECTORSCOPE, TALLY, IMD In-Monitor Display, CC 608/708 CLOSED CAPTION COMPATIBLE, DUAL LINK COMPATIBLE, 2K COMPATIBLE

\*Line 21 captions not supported

V-R1042DP-AFHD



- High Definition 1024 x 768 screens
- 100% digital processing
- Analog signals converted to digital
- High resolution scaling of all images

**Physical Specs**

# OF SCREENS	SCREEN SIZE	ASPECT RATIO	RESOLUTION	BRIGHT	CONTRAST	RU	DEPTH
2	10.4"	4:3	1024x768	700	300:1	5	2.5"

**Inputs per Screen**

COMPOSITE Loop-Through, S-VIDEO Loop-Through, COMPONENT Loop-Through, DVI-I, PC-XGA, HD-SDI Loop-Through

**Features**

TALLY

V-R1042-IMD-3GTE



- All-in-one\* In-Monitor Display solution
- 1024 x 768 LCD Panel
- 3G-HDSI Inputs with Loop Through
- Three-color on-screen "soft" tally indicators
- On-Screen Audio Presence Indicator



**Physical Specs**

# OF SCREENS	SCREEN SIZE	ASPECT RATIO	RESOLUTION	BRIGHT	CONTRAST	RU	DEPTH
2	10.4"	4:3	1024x768	300	700:1	4	1.73"

**Inputs per Screen**

3G-SDI Loop-Through

**Features**

RS-422 CONTROL, TALLY, CC 608/708 CLOSED CAPTION COMPATIBLE

\*Line 21 captions not supported

M-LYNX-15-RM



- 15" 4:3 LCD Monitor
- 450:1 Contrast Ratio
- 3D Comb Filter
- Dynamic Noise Reduction



**Physical Specs**

# OF SCREENS	SCREEN SIZE	ASPECT RATIO	RESOLUTION	BRIGHT	CONTRAST	DEPTH
1	15"	4:3	1024x768	350	450:1	2.7"

**Inputs**

COMPOSITE Loop-Through, S-VIDEO Loop-Through, COMPONENT Loop-Through, DVI-I, VGA, AUDIO INPUTS

M-LYNX-15SDI-RM



- 15" 4:3 LCD Monitor
- 3D Comb Filter
- Dynamic Noise Reduction
- Two SDI inputs with loop-through



**Physical Specs**

# OF SCREENS	SCREEN SIZE	ASPECT RATIO	RESOLUTION	BRIGHT	CONTRAST	DEPTH
1	15"	4:3	1024x768	350	450:1	2.7"

**Inputs**

COMPOSITE x2 Loop-Through, SDI x2 Loop-Through, VGA, DVI-I, AUDIO INPUTS x3

V-RD151P



- Pull-out drawer with 1024 x 768 panel
- Ultra-compact design fits in EIA standard rack 1U high
- Built-in Speakers
- Key lock for secure transportation

**Physical Specs**

# OF SCREENS	SCREEN SIZE	ASPECT RATIO	RESOLUTION	BRIGHT	CONTRAST	RU	DEPTH
1	15"	4:3	1024x768	250	500:1	1	22"

**Inputs per Screen**

COMPOSITE Loop-Through, S-VIDEO Loop-Through, SXGA

**Features**

TALLY

V-R151DP-AFSD



- 1024 x 768 panel
- 16.7 million colors
- Wide viewing angles
- 450:1 contrast ratio

**Physical Specs**

# OF SCREENS	SCREEN SIZE	ASPECT RATIO	RESOLUTION	BRIGHT	CONTRAST	RU	DEPTH
1	15"	16:9	1024x768	500	450:1	6	1.8"

**Inputs per Screen**

COMPOSITE Loop-Through, S-VIDEO Loop-Through, COMPONENT Loop-Through, DVI-I, SXGA, SDI Loop-Through

**Features**

TALLY

V-R151DP-AFHD



- 1024 x 768 panel
- 16.7 million colors
- Wide viewing angles
- HD-SDI input with loop-through

**Physical Specs**

# OF SCREENS	SCREEN SIZE	ASPECT RATIO	RESOLUTION	BRIGHT	CONTRAST	RU	DEPTH
1	15"	16:9	1024x768	500	450:1	6	1.8"

**Inputs per Screen**

COMPOSITE Loop-Through, S-VIDEO Loop-Through, COMPONENT Loop-Through, DVI-I, SXGA, HD-SDI Loop-Through

**Features**

TALLY

V-LCD15SB-AFHD-DT



- High Luminance Backlight
- Low Reflective Properties
- Wider color reproduction for richer colors
- Crisper, sharper images



**Physical Specs**

# OF SCREENS	SCREEN SIZE	ASPECT RATIO	RESOLUTION	BRIGHT	CONTRAST	RU	DEPTH
1	15"	16:9	1024x768	600	600:1	6	1.8"

**Inputs per Screen**

COMPOSITE Loop-Through, S-VIDEO Loop-Through, COMPONENT Loop-Through, DVI-I, SXGA, HD-SDI Loop-Through

**Features**

TALLY

M-LYNX-17-RM



- 17" 5:4 LCD Monitor
- 1000:1 Contrast Ratio
- Dynamic Noise Reduction
- Composite, S-Video, Component, VGA, DVI-I



**Physical Specs**

# OF SCREENS	SCREEN SIZE	ASPECT RATIO	RESOLUTION	BRIGHT	CONTRAST	RU	DEPTH
1	17"	5:4	1280x1024	300	1000:1	1	2.8"

**Inputs per Screen**

COMPOSITE x2 Loop-Through, S-VIDEO Loop-Through, COMPONENT Loop-Through, DVI-I, VGA, AUDIO INPUTS x3

V-LCD17H



- 17" 16:10 LCD Monitor
- 1400 x 900 resolution
- False Color Filter
- Available with dual input HD-SDI (V-LCD17H-2HD)

**Physical Specs**

# OF SCREENS	SCREEN SIZE	ASPECT RATIO	RESOLUTION	BRIGHT	CONTRAST	RU	DEPTH
1	17"	16:10	1400x900	250	600:1	1	1.4"

**Available Configurations:**

3G-SDI Loop-Through, HD-SDI x2

**Features**

TALLY

M-LYNX-17SDI-RM



- 17" 5:4 LCD Monitor
- 1000:1 Contrast Ratio
- Dynamic Noise Reduction
- SDI, Composite, S-Video, Component, VGA, DVI-I



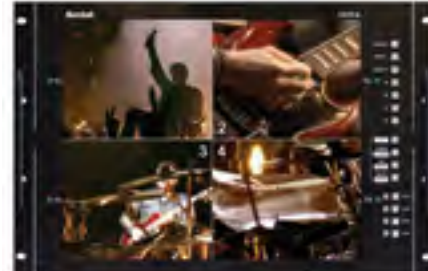
**Physical Specs**

# OF SCREENS	SCREEN SIZE	ASPECT RATIO	RESOLUTION	BRIGHT	CONTRAST	RU	DEPTH
1	17"	5:4	1280x1024	300	450:1	1	2.8"

**Inputs per Screen**

COMPOSITE x2 Loop-Through, SDI x2 Loop-Through, DVI-I, VGA, AUDIO INPUTS x3

V-R171P-4A



- High Resolution 1280 x 1024 panel
- Unique Ultra Wide Viewing Angle
- Built-in Quad Splitter/Sequential Switcher
- Unique 180 degree tilt adjustment while mounted in rack

**Physical Specs**

# OF SCREENS	SCREEN SIZE	ASPECT RATIO	RESOLUTION	BRIGHT	CONTRAST	RU	DEPTH
1	17"	5:4	1280x1024	250	500:1	8	2.5"

**Inputs per Screen**

COMPOSITE x4, S-VIDEO, COMPONENT, DVI-I, VGA

**Features**

TALLY

V-RD171P-HDA



- Single RU metal enclosure with Pull-Out drawer
- Drawer includes lock and key for secure transport
- 1280 x 1024 panel
- 500:1 contrast ratio

**Physical Specs**

# OF SCREENS	SCREEN SIZE	ASPECT RATIO	RESOLUTION	BRIGHT	CONTRAST	RU	DEPTH
1	17"	5:4	1280x1024	300	500:1	1	22"

**Inputs per Screen**

COMPOSITE, S-VIDEO, COMPONENT, DVI-I, VGA

**Features**

TALLY

V-MD173

NEW



- Swap and interchange video modules
- Two available input slots



Physical Specs

1	17"	16:10	1920x1080	250	600:1	6	1.4"
# OF SCREENS	SCREEN SIZE	ASPECT RATIO	RESOLUTION	BRIGHT	CONTRAST	RU	DEPTH

Included Inputs: COMPOSITE Loop-Through, COMPONENT Loop-Through, NETWORKING, TALLY

Optional Inputs: 3G-SDI Loop-Through, HD-SDI x 2 Loop-Through, HDMI x 2, DVI-I, FIBER-OPTIC Loop-Through

Features: TALLY

QV171X-HDSDI



- "All-in-one" In-Monitor Display solution
- View 4 different inputs at once
- Three-color on-screen "soft" tally indicators
- On-Screen Audio Presence Indicator



Physical Specs

1	17"	16:9	1920x1200	300	500:1	6	1.4"
# OF SCREENS	SCREEN SIZE	ASPECT RATIO	RESOLUTION	BRIGHT	CONTRAST	RU	DEPTH

Included Inputs: HD-SDI x 4 Loop-Through, DVI-I

Optional Inputs: RS-422 CONTROL, TALLY

Features: TALLY

V-R171X-DLW



- Waveform monitor
- Vectorscope
- Time-code (LTC / VITC)
- 16 channels of audio metering



Physical Specs

1	17"	16:9	1920x1200	300	500:1	6	1.4"
# OF SCREENS	SCREEN SIZE	ASPECT RATIO	RESOLUTION	BRIGHT	CONTRAST	RU	DEPTH

Included Inputs: 3G-SDI x 2 Loop-Through, DVI-I

Optional Inputs: RS-422 CONTROL, WAVEFORM, VECTORSCOPE, TALLY

Features: TALLY, CC 608 708, DUAL LINK, 2K

V-R173-IMD-3GTE

NEW



- Built-in IMD Display
- Three color on-screen Tally indicator
- On-Screen Audio Presence Indicator



Physical Specs

1	17.3"	16:10	1920x1080	250	600:1	6	1.4"
# OF SCREENS	SCREEN SIZE	ASPECT RATIO	RESOLUTION	BRIGHT	CONTRAST	RU	DEPTH

Included Inputs: 3G-SDI Loop-Through

Optional Inputs: RS-422 CONTROL, TALLY, CC 608 708

Features: TALLY, CC 608 708

V-R185-DLW



- 10-bit image processor
- 4x3 and 16x9 aspect ratios
- High quality motion adaptive deinterlacer
- Time-code (LTC / VITC)



Physical Specs

1	18.5"	16:9	1366x768	300	1000:1	7	1.6"
# OF SCREENS	SCREEN SIZE	ASPECT RATIO	RESOLUTION	BRIGHT	CONTRAST	RU	DEPTH

Included Inputs: 3G-SDI x 2 Loop-Through, DVI-I

Optional Inputs: RS-422 CONTROL, WAVEFORM, VECTORSCOPE, TALLY

Features: TALLY, CC 608 708, DUAL LINK, 2K

V-R185-IMD-3GTE



- "All-in-one" In-Monitor Display solution
- 1366 x 768 LCD panel
- Three-color on-screen "soft" tally indicators
- On-Screen Audio Presence Indicator



Physical Specs

1	18.5"	16:9	1366x768	300	1000:1	6	1.7"
# OF SCREENS	SCREEN SIZE	ASPECT RATIO	RESOLUTION	BRIGHT	CONTRAST	RU	DEPTH

Included Inputs: 3G-SDI Loop-Through

Optional Inputs: RS-422 CONTROL, TALLY

Features: TALLY

OR-181



- 1366 x 768 LCD Monitor
- Waveform Monitor
- Color Vectorscope
- 3G-SDI Inputs with Active Loop-Through
- HD-VGA and DVI-I Inputs
- 16CH Audio Level Meters



Physical Specs

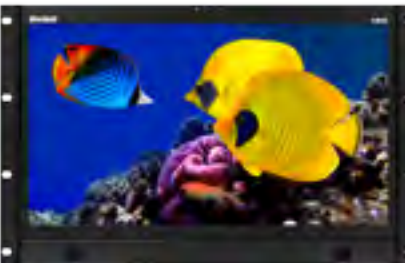
1	18.5"	16:9	1366x768	300	1000:1	7	3"
# OF SCREENS	SCREEN SIZE	ASPECT RATIO	RESOLUTION	BRIGHT	CONTRAST	RU	DEPTH

Included Inputs: 3G-SDI x 2 Loop-Through, COMPOSITE, COMPONENT

Optional Inputs: DVI-I, VGA, HEADPHONE, AUDIO Line OUT, AUDIO Line IN, SPEAKER

Features: WAVEFORM, VECTORSCOPE, TALLY

V-MD185



- 1366 x 768 LCD Monitor
- Swap and interchange modular inputs at any time
- False Color Filter
- Two available input slots



Physical Specs

1	18.5"	16:9	1366x768	300	1000:1	7	1.4"
# OF SCREENS	SCREEN SIZE	ASPECT RATIO	RESOLUTION	BRIGHT	CONTRAST	RU	DEPTH

Included Inputs: COMPOSITE Loop-Through, COMPONENT Loop-Through

Optional Inputs: 3G-SDI Loop-Through, HD-SDI x 2 Loop-Through, HDMI x 2, DVI-I, FIBER-OPTIC Loop-Through

Features: NETWORKING, TALLY

M-LYNX-19-RM



- 19" 5:4 LCD Monitor
- 1000:1 Contrast Ratio
- Composite, S-Video, YPbPr, VGA, DVI
- Dynamic Noise Reduction

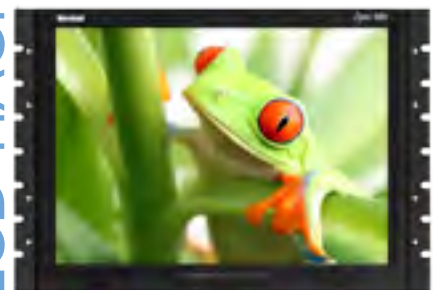


Physical Specs

1	19"	5:4	1280x1024	450	1000:1	2.8"
# OF SCREENS	SCREEN SIZE	ASPECT RATIO	RESOLUTION	BRIGHT	CONTRAST	DEPTH

Included Inputs: COMPOSITE x 2, S-VIDEO, COMPONENT, DVI-I, VGA, AUDIO INPUTS x 2

M-LYNX-19SDI-RM



- 19" 5:4 LCD Monitor
- 1000:1 Contrast Ratio
- SDI, Composite, S-Video, YPbPr, VGA, DVI
- Dynamic Noise Reduction



V-MD201N **NEW**



- 1600 x 900 LCD Monitor
- Swap and interchange modular inputs at any time
- False Color Filter
- Two available input slots



V-R201-IMD-3GTE



- "All-in-one" In-Monitor Display solution
- Three-color on-screen "soft" tally indicators
- On-Screen Audio Presence Indicator



**Physical Specs**

<b>1</b> # OF SCREENS	<b>19"</b> SCREEN SIZE	<b>5:4</b> ASPECT RATIO	<b>1280x1024</b> RESOLUTION	<b>400</b> BRIGHT	<b>700:1</b> CONTRAST	<b>3"</b> DEPTH
--------------------------	---------------------------	----------------------------	--------------------------------	----------------------	--------------------------	--------------------

**Inputs**

- COMPOSITE x 2 Loop-Through
- SDI x 2 Loop-Through
- DVI-I
- VGA
- AUDIO INPUTS x 3

**Physical Specs**

<b>1</b> # OF SCREENS	<b>20"</b> SCREEN SIZE	<b>16:9</b> ASPECT RATIO	<b>1600x900</b> RESOLUTION	<b>300</b> BRIGHT	<b>1000:1</b> CONTRAST	<b>7</b> RU	<b>1.6"</b> DEPTH
--------------------------	---------------------------	-----------------------------	-------------------------------	----------------------	---------------------------	----------------	----------------------

**Inputs**

- COMPOSITE Loop-Through
- COMPONENT Loop-Through
- 3G-SDI Loop-Through
- HD-SDI x 2 Loop-Through
- HDMI x 2
- DVI-I
- FIBER-OPTIC Loop-Through

**Optional Inputs**

- 3G
- 3G-SDI Loop-Through
- HD-SDI x 2 Loop-Through
- HDMI x 2
- DVI-I
- FIBER-OPTIC Loop-Through

**Features**

- NETWORKING
- TALLY

**Physical Specs**

<b>1</b> # OF SCREENS	<b>20"</b> SCREEN SIZE	<b>16:9</b> ASPECT RATIO	<b>1680x1050</b> RESOLUTION	<b>300</b> BRIGHT	<b>1000:1</b> CONTRAST	<b>6</b> RU	<b>2"</b> DEPTH
--------------------------	---------------------------	-----------------------------	--------------------------------	----------------------	---------------------------	----------------	--------------------

**Inputs**

- 3G-SDI Loop-Through

**Features**

- NETWORKING
- RS-422 CONTROL
- TALLY
- CC 608/708 CLOSED CAPTION \*Line 21 captions not supported

V-LCD4-PRO-L



- Switchable dual video BNC inputs
- Wide viewing angle
- Active loop-through feature
- Weighs only 0.8 lbs

V-LCD4-PRO-L- KIT



- V-LCD4-PRO-L Monitor
- Weatherproof Carrying Case
- High Capacity Battery with Charger
- Battery runs up to 1 hour and 20 minutes

V-LCD50-HDI



- Operates on 4 AA Batteries
- False Color
- Peaking Filter
- Weighs only 0.55 lbs.

V-LCD51



- Accepts many different batteries
- False Color
- Peaking Filter
- Weighs only 0.55 lbs.

V-LCD5.6-PRO



- Plastic cabinet with 1/4" mount
- Mirror Mode
- Built-in speaker
- Weighs only 1.14 lbs.

V-LCD56-PRO KIT



- LCD5.6-PRO Monitor
- Padded Carrying Case and cables
- High Capacity Battery with charger
- Battery runs up to 1 hour and 45 minutes

**Physical Specs**

<b>4"</b> SCREEN SIZE	<b>4:3</b> ASPECT RATIO	<b>480x234</b> RESOLUTION	<b>250</b> BRIGHT	<b>200:1</b> CONTRAST	<b>1.8"</b> DEPTH
--------------------------	----------------------------	------------------------------	----------------------	--------------------------	----------------------

**Inputs**

- COMPOSITE Loop-Through
- AUDIO INPUTS

**Physical Specs**

<b>4"</b> SCREEN SIZE	<b>4:3</b> ASPECT RATIO	<b>480x234</b> RESOLUTION	<b>250</b> BRIGHT	<b>200:1</b> CONTRAST	<b>1.8"</b> DEPTH
--------------------------	----------------------------	------------------------------	----------------------	--------------------------	----------------------

**Inputs**

- COMPOSITE Loop-Through

**Includes:** V-LCD4-PRO-L monitor, battery pack (V-BP12-LCD), AC adapter (V-LCD-AP-12/24) and carrying case.

**Physical Specs**

<b>5"</b> SCREEN SIZE	<b>16:9</b> ASPECT RATIO	<b>800x480</b> RESOLUTION	<b>300</b> BRIGHT	<b>600:1</b> CONTRAST	<b>1.8"</b> DEPTH
--------------------------	-----------------------------	------------------------------	----------------------	--------------------------	----------------------

**Inputs**

- HDMI

**Physical Specs**

<b>5"</b> SCREEN SIZE	<b>16:9</b> ASPECT RATIO	<b>800x480</b> RESOLUTION	<b>300</b> BRIGHT	<b>600:1</b> CONTRAST	<b>1.8"</b> DEPTH
--------------------------	-----------------------------	------------------------------	----------------------	--------------------------	----------------------

**Inputs**

- HDMI

**Physical Specs**

<b>5.6"</b> SCREEN SIZE	<b>4:3</b> ASPECT RATIO	<b>320x240</b> RESOLUTION	<b>270</b> BRIGHT	<b>85:1</b> CONTRAST	<b>2"</b> DEPTH
----------------------------	----------------------------	------------------------------	----------------------	-------------------------	--------------------

**Inputs**

- COMPOSITE Loop-Through
- AUDIO INPUTS

**Physical Specs**

<b>5.6"</b> SCREEN SIZE	<b>4:3</b> ASPECT RATIO	<b>320x240</b> RESOLUTION	<b>270</b> BRIGHT	<b>85:1</b> CONTRAST	<b>2"</b> DEPTH
----------------------------	----------------------------	------------------------------	----------------------	-------------------------	--------------------

**Inputs**

- COMPOSITE Loop-Through
- AUDIO INPUTS

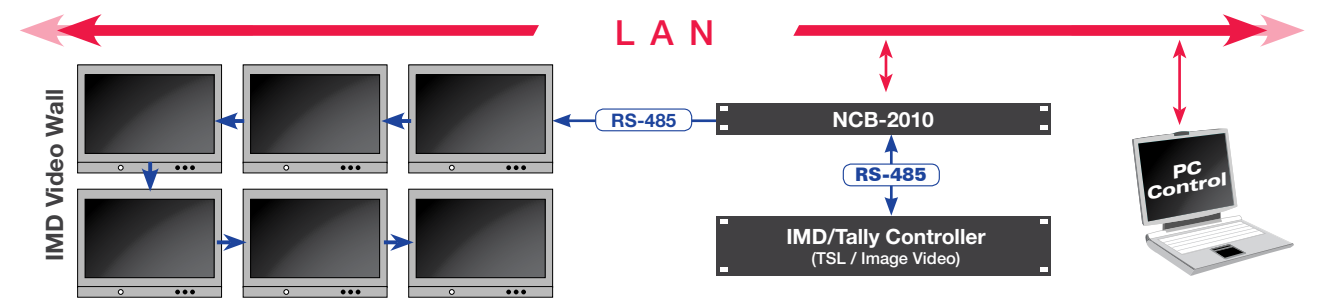
**Includes:** V-LCD5.6-PRO, rechargeable battery pack (with charger), and nylon carrying case

*\* There is a cost difference with larger batteries. Prices shown with small battery configuration.*

NCB-2010 In-Monitor Display (IMD) Network Control Box



This 1RU network control box passes through Under-Monitor Display (UMD) protocols to be displayed on Marshall Electronics IMD-capable monitors. The NCB-2010 offers complete control of each monitor's menu functions and controls such as contrast, color, curtain color, ratio, etc. The monitors can also be controlled individually, by group, or on a global scale. The NCB-2010 connects directly to any TCP/IP 10/100 Ethernet connection. No special application is required since operability interfaces directly through any regular web browser.



- Ethernet: RJ-45 (supports 10/100)
- RS-485 input connection for 3rd party IMD/Tally controller
- Four RS-485 output ports to connect to Marshall Monitors
- Each RS-485 port can support up to 128 LCD panels
- Send and retrieve all internal monitor functions
- Supported Protocol: Image Video, TSL, Marshall
- Web browser interface



**V-LCD56MD**  
**V-LCD56MD-3G**  
**V-LCD56MD-O**



Physical Specs						Inputs
<b>5.6"</b> SCREEN SIZE	<b>16:10</b> ASPECT RATIO	<b>1280x800</b> RESOLUTION	<b>300</b> BRIGHT	<b>500:1</b> CONTRAST	<b>1.45"</b> DEPTH	

- High Resolution 1280 x 800 LED Backlit IPS panel
- Brightness 300-nit with Adjustable Backlight
- DSLR Ratio Adjustment with 4 DSLR Ratio Presets
- On Screen Waveform / Stereo Audio Bar Display
- Manual Gamma Adjustment
- Available in three Configurations:**  
**V-LCD56MD** (No Module)  
**V-LCD56MD-O** (3G Output Module with two 3G-HSDSI outputs converted from the HDMI input. HDCP Compliant)  
**V-LCD56MD-3G** (3G Input Module with loop-through)
- Adjustable IRE Clip Guide (Zebra Filter)
- 1/4"-20 mounts on all sides
- Stereo Headphone Output (select a L+R Pair from the available channels)
- 6 Monitor Configuration User Presets
- HDMI Pass-Through (HDCP Compliant)
- HDMI Auto Color Space and Ratio detect
- New Peaking Filter (Choice of four color highlights and variable sensitivity)
- False Color Filter

**V-LCD70XHB-HDIPT**



- High Brightness 800 nit LCD panel
- DSLR Ratio Adjustment
- HDMI Auto Color Space and Ratio detect
- Manual Gamma Adjustment



Physical Specs						Inputs
<b>7"</b> SCREEN SIZE	<b>16:9</b> ASPECT RATIO	<b>800x480</b> RESOLUTION	<b>800</b> BRIGHT	<b>1000:1</b> CONTRAST	<b>2.2"</b> DEPTH	

**V-LCD70XHB-3GSDI**



- High Brightness 800 nit LCD panel
- Manual Gamma Adjustment
- Adjustable Backlight
- Image Flip



Physical Specs						Inputs
<b>7"</b> SCREEN SIZE	<b>16:9</b> ASPECT RATIO	<b>800x480</b> RESOLUTION	<b>800</b> BRIGHT	<b>1000:1</b> CONTRAST	<b>2.2"</b> DEPTH	

**OR-70-3D**



- High Resolution (1600 x 600)
- 3G-SDI Input with Loop-Through
- Dual Real-Time Waveform Monitor
- Dual Real-Time Color Vectorscope
- Dual Real-Time 3D Image Processing Analysis
- Multi-Format Support



Physical Specs						Inputs	Features
<b>7"</b> SCREEN SIZE	<b>16:9</b> ASPECT RATIO	<b>1600x600</b> RESOLUTION	<b>320</b> BRIGHT	<b>600:1</b> CONTRAST	<b>1.6"</b> DEPTH		

**V-LCD70MD**  
**V-LCD70MD-3G**  
**V-LCD70MD-O**



Physical Specs						Inputs
<b>7"</b> SCREEN SIZE	<b>15:9</b> ASPECT RATIO	<b>1024x600</b> RESOLUTION	<b>800</b> BRIGHT	<b>1000:1</b> CONTRAST	<b>1.1"</b> DEPTH	

- High Resolution 1024 x 600 LED Backlit IPS panel
- High Brightness 800-nit with Adjustable Backlight
- Available in three Configurations:**  
**V-LCD70MD** (No Module)  
**V-LCD70MD-O** (3G Output Module with two 3G-HSDSI outputs converted from the HDMI input. HDCP Compliant)  
**V-LCD70MD-3G** (3G Input Module with loop-through)
- DSLR Ratio Adjustment with 4 DSLR Ratio Presets
- On Screen Waveform / Stereo Audio Bar Display
- Manual Gamma Adjustment
- Adjustable IRE Clip Guide (Zebra Filter)
- 1/4"-20 mounts on all sides
- Stereo Headphone Output (select a L+R Pair from the available channels)

**V-R841DP-AFHD**



- "V" Mount battery adapter included
- Optical-grade polycarbonate screen cover
- Blue Gun for color adjustment
- Built-in Color Bars

**OR-841-HSDSI**



- Real-Time Waveform Monitor
- Real-Time Color Vectorscope
- Auto White Balance Calibration
- Sixteen 64-segment Tri-color Audio Meters

Physical Specs								Inputs	Features
<b>8.4"</b> SCREEN SIZE	<b>4:3</b> ASPECT RATIO	<b>1024x768</b> RESOLUTION	<b>400</b> BRIGHT	<b>400:1</b> CONTRAST	<b>4</b> RU	<b>2.5"</b> DEPTH			

Physical Specs				Inputs	Features	
<b>8.4"</b> SCREEN SIZE	<b>4:3</b> ASPECT RATIO	<b>1024x768</b> RESOLUTION	<b>400</b> BRIGHT	<b>400:1</b> CONTRAST	<b>4</b> RU	<b>1.7"</b> DEPTH

Inputs	Features

Features

**V-LCD84SB-AFHD**



- Super Transflective Outdoor Monitor
- Designed specifically for outdoor applications and challenging viewing environments
- Over 16.7 million colors
- Pixel-to-Pixel native resolution scaling



Physical Specs								Inputs	Features
<b>8.4"</b> SCREEN SIZE	<b>4:3</b> ASPECT RATIO	<b>800x600</b> RESOLUTION	<b>650</b> BRIGHT	<b>600:1</b> CONTRAST	<b>4</b> RU	<b>2.5"</b> DEPTH			

**V-LCD90MD**  
**V-LCD90MD-3G**  
**V-LCD90MD-O**



Physical Specs						Inputs
<b>9"</b> SCREEN SIZE	<b>16:9</b> ASPECT RATIO	<b>1280x768</b> RESOLUTION	<b>600</b> BRIGHT	<b>1000:1</b> CONTRAST	<b>1.41"</b> DEPTH	

- High Resolution 1280 x 768 White LED Backlit IPS panel
- High Brightness 600-nit with Adjustable Backlight
- DSLR Ratio Adjustment with 4 DSLR Ratio Presets
- Available in three Configurations:**  
**V-LCD90MD** (No Module)  
**V-LCD90MD-O** (3G Output Module with two 3G-HSDSI outputs converted from the HDMI input. HDCP Compliant)  
**V-LCD90MD-3G** (3G Input Module with loop-through)
- On Screen Waveform / Stereo Audio Bar Display
- Manual Gamma Adjustment
- Adjustable IRE Clip Guide (Zebra Filter)
- 1/4"-20 mounts on all sides
- Stereo Headphone Output (select a L+R Pair from the available channels)
- 6 Monitor Configuration User Presets
- HDMI Pass-Through (HDCP Compliant)
- New Peaking Filter

**OR-901-3GSDI**



- 9-inch 960 x 540 screen
- 3D Review
- Waveform Monitor
- 3G-SDI

Physical Specs						Inputs	Features
<b>9"</b> SCREEN SIZE	<b>16:9</b> ASPECT RATIO	<b>960x540</b> RESOLUTION	<b>350</b> BRIGHT	<b>1000:1</b> CONTRAST	<b>1.8"</b> DEPTH		

Features

**OR-901-XDI**



**Physical Specs**

<b>9"</b> SCREEN SIZE	<b>16:9</b> ASPECT RATIO	<b>960x540</b> RESOLUTION	<b>350</b> BRIGHT	<b>1000:1</b> CONTRAST	<b>1.8"</b> DEPTH
--------------------------	-----------------------------	------------------------------	----------------------	---------------------------	----------------------

**Inputs**      **Features**

**3G-SDI x 2**   
 **COMPOSITE**   
 **COMPONENT**   
 **WAVEFORM**   
 **VECTORSCOPE**   
 **AUDIO LEVEL**   
 **TALLY**

**HDMI**   
 **HEADPHONE**   
 **AUDIO Line OUT**   
 **SPEAKER**

- 9-inch 960 x 540 screen
- Integrated cross media converter
- 3G-SDI, Composite, Component and HDMI inputs
- Waveform Monitor

**M-LYNX-10**



**Physical Specs**

<b>10"</b> SCREEN SIZE	<b>4:3</b> ASPECT RATIO	<b>800x600</b> RESOLUTION	<b>250</b> BRIGHT	<b>450:1</b> CONTRAST	<b>1.7"</b> DEPTH
---------------------------	----------------------------	------------------------------	----------------------	--------------------------	----------------------

**Inputs**

**COMPOSITE**   
 **S-VIDEO**   
 **VGA**   
 **AUDIO INPUTS x 2**

- 10" 4:3 LCD Monitor
- 2D Comb Filter
- Dynamic Noise Reduction

**M-LYNX-10W**



**Physical Specs**

<b>10"</b> SCREEN SIZE	<b>16:9</b> ASPECT RATIO	<b>1024x600</b> RESOLUTION	<b>250</b> BRIGHT	<b>300:1</b> CONTRAST	<b>0.75"</b> DEPTH
---------------------------	-----------------------------	-------------------------------	----------------------	--------------------------	-----------------------

**Inputs**

**COMPOSITE x 2**   
 **VGA**   
 **AUDIO INPUTS**

- 10" 16:9 LCD Monitor
- Thin, sleek, and lightweight design
- Includes adjustable stand, thin card remote, VGA cable, and AC adapter

**V-R1041DP-AFHD**



**Physical Specs**

<b>10.4"</b> SCREEN SIZE	<b>4:3</b> ASPECT RATIO	<b>1024x768</b> RESOLUTION	<b>300</b> BRIGHT	<b>700:1</b> CONTRAST	<b>2.5"</b> DEPTH
-----------------------------	----------------------------	-------------------------------	----------------------	--------------------------	----------------------

**Inputs**      **Features**

**COMPOSITE Loop-Through**   
 **S-VIDEO Loop-Through**   
 **COMPONENT Loop-Through**   
 **HD-SDI Loop-Through**   
 **DVI-I**   
 **XGA**   
 **TALLY**

- 16.7 million colors
- Wide viewing angles
- Easy-to-see three color tally indicators
- Adjustment Settings Memory

**V-R1041-IMD-3G**



**Physical Specs**

<b>10.4"</b> SCREEN SIZE	<b>4:3</b> ASPECT RATIO	<b>1024x768</b> RESOLUTION	<b>300</b> BRIGHT	<b>700:1</b> CONTRAST	<b>1.7"</b> DEPTH
-----------------------------	----------------------------	-------------------------------	----------------------	--------------------------	----------------------

**Inputs**      **Features**

**3G-SDI Loop-Through**   
 **TALLY**   
 **CLOSED CAPTION**  
\*Line 21 captions not supported

- Built-in IMD Display
- High Resolution 1024x768 Screen
- On screen Audio Presence Indicator
- On Screen Time Code

**M-LYNX-15**



**Physical Specs**

<b>15"</b> SCREEN SIZE	<b>4:3</b> ASPECT RATIO	<b>1024x768</b> RESOLUTION	<b>350</b> BRIGHT	<b>450:1</b> CONTRAST	<b>2.7"</b> DEPTH
---------------------------	----------------------------	-------------------------------	----------------------	--------------------------	----------------------

**Inputs**

**COMPOSITE x 2 Loop-Through**   
 **S-VIDEO Loop-Through**   
 **COMPONENT Loop-Through**   
 **DVI-I**   
 **VGA**   
 **AUDIO INPUTS x 2**

- 15" 4:3 LCD Monitor
- 3D Comb Filter
- Dynamic Noise Reduction

**M-LYNX-15SDI**



**Physical Specs**

<b>15"</b> SCREEN SIZE	<b>4:3</b> ASPECT RATIO	<b>1024x768</b> RESOLUTION	<b>350</b> BRIGHT	<b>450:1</b> CONTRAST	<b>2.7"</b> DEPTH
---------------------------	----------------------------	-------------------------------	----------------------	--------------------------	----------------------

**Inputs**

**COMPOSITE x 2 Loop-Through**   
 **SDI x 2 Loop-Through**   
 **VGA**   
 **DVI-I**   
 **AUDIO INPUTS x 3**

- 15" 4:3 LCD Monitor
- 3D Comb Filter
- Dynamic Noise Reduction
- Two SDI inputs with loop-through

**V-R151DP-AFSD-DT**



**Physical Specs**

<b>15"</b> SCREEN SIZE	<b>16:9</b> ASPECT RATIO	<b>1024x768</b> RESOLUTION	<b>500</b> BRIGHT	<b>450:1</b> CONTRAST	<b>6</b> RU	<b>1.8"</b> DEPTH
---------------------------	-----------------------------	-------------------------------	----------------------	--------------------------	----------------	----------------------

**Inputs**      **Features**

**COMPOSITE Loop-Through**   
 **S-VIDEO Loop-Through**   
 **COMPONENT Loop-Through**   
 **SDI Loop-Through**   
 **DVI-I**   
 **SXGA**   
 **TALLY**

- 1024 x 768 panel
- 16.7 million colors
- Wide viewing angles
- 450:1 contrast ratio

**V-R151DP-AFHD-DT**



**Physical Specs**

<b>15"</b> SCREEN SIZE	<b>16:9</b> ASPECT RATIO	<b>1024x768</b> RESOLUTION	<b>500</b> BRIGHT	<b>450:1</b> CONTRAST	<b>6</b> RU	<b>1.8"</b> DEPTH
---------------------------	-----------------------------	-------------------------------	----------------------	--------------------------	----------------	----------------------

**Inputs**      **Features**

**COMPOSITE Loop-Through**   
 **S-VIDEO Loop-Through**   
 **COMPONENT Loop-Through**   
 **HD-SDI Loop-Through**   
 **DVI-I**   
 **SXGA**   
 **TALLY**

- 1024 x 768 panel
- 16.7 million colors
- Wide viewing angles
- HD-SDI input with loop-through

**V-LCD15SB-AFHD-DT**



**Physical Specs**

<b>15"</b> SCREEN SIZE	<b>16:9</b> ASPECT RATIO	<b>1024x768</b> RESOLUTION	<b>600</b> BRIGHT	<b>600:1</b> CONTRAST	<b>6</b> RU	<b>1.8"</b> DEPTH
---------------------------	-----------------------------	-------------------------------	----------------------	--------------------------	----------------	----------------------

**Inputs**      **Features**

**COMPOSITE Loop-Through**   
 **S-VIDEO Loop-Through**   
 **COMPONENT Loop-Through**   
 **HD-SDI Loop-Through**   
 **DVI-I**   
 **SXGA**   
 **TALLY**

- Super Transflective Outdoor Monitor
- Designed specifically for outdoor applications and challenging viewing environments
- Over 16.7 million colors
- 600:1 contrast ratio



M-LYNX-17



Lynx

- 17" 5:4 LCD Monitor
- Contrast: 1000:1
- 3D Comb Filter
- Dynamic Noise Reduction

**Physical Specs**

17" SCREEN SIZE	5:4 ASPECT RATIO	1280x1024 RESOLUTION	300 BRIGHT	1000:1 CONTRAST	2.5" DEPTH
-----------------	------------------	----------------------	------------	-----------------	------------

**Inputs**

COMPOSITE x 2 Loop-Through | S-VIDEO Loop-Through | COMPONENT Loop-Through | DVI-I | VGA | AUDIO INPUTS x 3

V-LCD17H



- 17" 16:10 LCD Monitor
- 1400 x 900 resolution
- False Color Filter

**Physical Specs**

17" SCREEN SIZE	16:10 ASPECT RATIO	1400x900 RESOLUTION	250 BRIGHT	600:1 CONTRAST	1.4" DEPTH
-----------------	--------------------	---------------------	------------	----------------	------------

**Available Configurations:**

- 3G-SDI Loop-Through
- HD-SDI x 2

**Features:** TALLY

V-LCD17H-2HDI-DT (Includes desktop stand) - Dual HDMI input  
 V-LCD17H-3G-DT - 3G-SDI input  
 V-LCD17H-2HD-DT - Dual HD-SDI input  
 V-LCD17H-DVII - DVI input  
 All models include desktop stand

M-LYNX-17SDI



Lynx

- 17" 5:4 LCD Monitor
- 1000:1 Contrast Ratio
- Dynamic Noise Reduction
- SDI, Composite, S-Video, Component, VGA, DVI

**Physical Specs**

17" SCREEN SIZE	5:4 ASPECT RATIO	1280x1024 RESOLUTION	300 BRIGHT	450:1 CONTRAST	2.8" DEPTH
-----------------	------------------	----------------------	------------	----------------	------------

**Inputs**

COMPOSITE x 2 Loop-Through | SDI x 2 Loop-Through | DVI-I | VGA | AUDIO INPUTS x 3

V-R171P-4A



- Unique Ultra Wide Viewing Angle LCD Panel
- Built-in Quad Splitter/Sequential Switcher
- Compact design fits in EIA standard rack 8U high
- Unique 180 degree tilt adjustment while mounted in rack

**Physical Specs**

17" SCREEN SIZE	5:4 ASPECT RATIO	1280x1024 RESOLUTION	300 BRIGHT	450:1 CONTRAST	2.8" DEPTH
-----------------	------------------	----------------------	------------	----------------	------------

**Inputs**

COMPOSITE x 4 Loop-Through | S-VIDEO Loop-Through | COMPONENT Loop-Through | DVI-I | VGA

V-MD173-DT



- Swap and interchange video modules
- Two available input slots

MD MODULAR DESIGN

**Physical Specs**

17" SCREEN SIZE	16:10 ASPECT RATIO	1920x1080 RESOLUTION	250 BRIGHT	600:1 CONTRAST	6 RU DEPTH	1.4" DEPTH
-----------------	--------------------	----------------------	------------	----------------	------------	------------

**Included Inputs**

COMPOSITE Loop-Through | COMPONENT Loop-Through | NETWORKING | TALLY

**Optional Inputs**

3G-SDI Loop-Through | HD-SDI x 2 Loop-Through | HDMI x 2 | DVI-I | FIBER-OPTIC Loop-Through

QV171X-HDSI-DT



QV QUAD VIEWER

- Native Resolution 1920 x 1200 LCD panel
- Accepts up to 4 HD-SDI input and 1 VGA/DVI high resolution input
- IMD (In-Monitor Display) capability for each input

**Physical Specs**

17" SCREEN SIZE	16:9 ASPECT RATIO	1920x1200 RESOLUTION	300 BRIGHT	500:1 CONTRAST	6 RU DEPTH	1.4" DEPTH
-----------------	-------------------	----------------------	------------	----------------	------------	------------

**Inputs**

HD-SDI x 4 Loop-Through | DVI-I

**Features:** RS-422 CONTROL, TALLY

V-R171X-DLW-DT



DLW SERIES

- Waveform monitor
- Vectorscope
- Time-code (LTC / VITC)
- 16 channels of audio metering

**Physical Specs**

17" SCREEN SIZE	16:9 ASPECT RATIO	1920x1200 RESOLUTION	300 BRIGHT	500:1 CONTRAST	6 RU DEPTH	1.4" DEPTH
-----------------	-------------------	----------------------	------------	----------------	------------	------------

**Inputs**

3G-SDI x 2 Loop-Through | DVI-I

**Features:** RS-422 CONTROL, WAVEFORM, VECTORSCOPE, TALLY, AUDIO LEVEL, CC 608/708, DUAL LINK COMPATIBLE, 2K COMPATIBLE

\*Line 21 captions not supported

V-R173-IMD-3GTE-DT

NEW



In-Monitor Display IMD

- Built-in IMD Display
- Three color on-screen Tally indicator
- On-Screen Audio Presence Indicator

**Physical Specs**

17.3" SCREEN SIZE	16:10 ASPECT RATIO	1920x1080 RESOLUTION	250 BRIGHT	600:1 CONTRAST	6 RU DEPTH	1.4" DEPTH
-------------------	--------------------	----------------------	------------	----------------	------------	------------

**Inputs**

3G-SDI Loop-Through

**Features:** RS-422 CONTROL, TALLY, CC 608/708 CLOSED CAPTION

\*Line 21 captions not supported

V-R185-IMD-3GTE-DT



In-Monitor Display IMD

- "All-in-one" In-Monitor Display solution
- Three-color on-screen "soft" tally indicators
- 1366 x 768 LCD panel
- On-Screen Audio Presence Indicator

**Physical Specs**

18.5" SCREEN SIZE	16:9 ASPECT RATIO	1366x768 RESOLUTION	300 BRIGHT	1000:1 CONTRAST	6 RU DEPTH	1.7" DEPTH
-------------------	-------------------	---------------------	------------	-----------------	------------	------------

**Inputs**

3G-SDI Loop-Through

**Features:** RS-422 CONTROL, TALLY, CC 608/708 CLOSED CAPTION

\*Line 21 captions not supported

**V-MD185-DT**



- 1366 x 768 LCD Monitor
- Swap and interchange modular inputs at any time
- False Color Filter
- Two available input slots



**Physical Specs**

<b>18.5"</b> SCREEN SIZE	<b>16:9</b> ASPECT RATIO	<b>1366x768</b> RESOLUTION	<b>300</b> BRIGHT	<b>1000:1</b> CONTRAST	<b>7</b> RU	<b>1.4"</b> DEPTH
-----------------------------	-----------------------------	-------------------------------	----------------------	---------------------------	----------------	----------------------

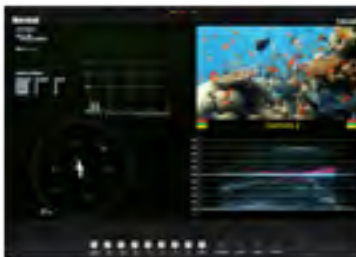
**Inputs**      **Features**

COMPOSITE Loop-Through   
 COMPONENT Loop-Through   
 NETWORKING   
 TALLY

**Optional Inputs**

3G-SDI Loop-Through   
 HD-SDI x2 Loop-Through   
 HDMI x2   
 DVI-I   
 FIBER-OPTIC Loop-Through

**V-R185-DLW-DT**



- 10-bit image processor
- 4x3 and 16x9 aspect ratios
- High quality motion adaptive deinterlacer
- Time-code (LTC / VITC)



**Physical Specs**

<b>18.5"</b> SCREEN SIZE	<b>16:9</b> ASPECT RATIO	<b>1366x768</b> RESOLUTION	<b>300</b> BRIGHT	<b>1000:1</b> CONTRAST	<b>7</b> RU	<b>1.6"</b> DEPTH
-----------------------------	-----------------------------	-------------------------------	----------------------	---------------------------	----------------	----------------------

**Inputs**      **Features**

3G-SDI x2 Loop-Through   
 DVI-I   
 RS-422 CONTROL   
 WAVEFORM   
 VECTORSCOPE   
 TALLY

**Optional Inputs**

3G-SDI Loop-Through   
 HD-SDI x2 Loop-Through   
 HDMI x2   
 DVI-I   
 FIBER-OPTIC Loop-Through

**In-Monitor Display (IMD)**

AUDIO LEVEL   
 CLOSED CAPTION 608/708   
 DUAL LINK COMPATIBLE   
 2K COMPATIBLE

\*Line 21 captions not supported

**OR-181**



- 1366 x 768 LCD Monitor
- Waveform Monitor
- Color Vectorscope
- 3G-SDI Inputs with Active Loop-Through
- HD-VGA and DVI-I Inputs
- 16CH Audio Level Meters



**Physical Specs**

<b>18.5"</b> SCREEN SIZE	<b>16:9</b> ASPECT RATIO	<b>1366x768</b> RESOLUTION	<b>300</b> BRIGHT	<b>1000:1</b> CONTRAST	<b>7</b> RU	<b>3"</b> DEPTH
-----------------------------	-----------------------------	-------------------------------	----------------------	---------------------------	----------------	--------------------

**Inputs**      **Features**

3G-SDI x2   
 COMPOSITE   
 COMPONENT   
 WAVEFORM   
 VECTORSCOPE   
 TALLY

DVI-I   
 VGA   
 AUDIO Line OUT   
 AUDIO Line IN   
 SPEAKER   
 HEADPHONE   
 AUDIO LEVEL

**M-LYNX-19**



- 19" 5:4 LCD Monitor
- 1000:1 Contrast Ratio
- Composite, S-Video, YPbPr, VGA, DVI-I
- Dynamic Noise Reduction



**Physical Specs**

<b>19"</b> SCREEN SIZE	<b>5:4</b> ASPECT RATIO	<b>1280x1024</b> RESOLUTION	<b>450</b> BRIGHT	<b>1000:1</b> CONTRAST	<b>3"</b> DEPTH
---------------------------	----------------------------	--------------------------------	----------------------	---------------------------	--------------------

**Inputs**

COMPOSITE x2 Loop-Through   
 S-VIDEO Loop-Through   
 COMPONENT Loop-Through   
 DVI-I   
 VGA   
 AUDIO INPUTS x2

**M-LYNX-19SDI**



- 19" 5:4 LCD Monitor
- 1000:1 Contrast Ratio
- SDI, Composite, S-Video, YPbPr, VGA, DVI-I
- Dynamic Noise Reduction



**Physical Specs**

<b>19"</b> SCREEN SIZE	<b>5:4</b> ASPECT RATIO	<b>1280x1024</b> RESOLUTION	<b>400</b> BRIGHT	<b>700:1</b> CONTRAST	<b>3"</b> DEPTH
---------------------------	----------------------------	--------------------------------	----------------------	--------------------------	--------------------

**Inputs**

COMPOSITE x2 Loop-Through   
 SDI x2 Loop-Through   
 DVI-I   
 VGA   
 AUDIO INPUTS x3

**V-MD201N-DT**



- 1600 x 900 LCD Monitor
- False Color Filter
- Two available input slots
- Swap and interchange modular inputs at any time



**Physical Specs**

<b>20"</b> SCREEN SIZE	<b>16:9</b> ASPECT RATIO	<b>1600x900</b> RESOLUTION	<b>300</b> BRIGHT	<b>1000:1</b> CONTRAST	<b>7</b> RU	<b>1.6"</b> DEPTH
---------------------------	-----------------------------	-------------------------------	----------------------	---------------------------	----------------	----------------------

**Inputs**      **Features**

COMPOSITE Loop-Through   
 COMPONENT Loop-Through   
 NETWORKING   
 RS-422 CONTROL   
 TALLY

**Optional Inputs**

3G-SDI Loop-Through   
 HD-SDI x2 Loop-Through   
 HDMI x2   
 DVI-I   
 FIBER-OPTIC Loop-Through

**V-R201-IMD-3GTE-DT**



- "All-in-one" In-Monitor Display solution
- Three-color on-screen "soft" tally indicators
- On-Screen Audio Presence Indicator



**Physical Specs**

<b>20"</b> SCREEN SIZE	<b>16:9</b> ASPECT RATIO	<b>1680x1050</b> RESOLUTION	<b>300</b> BRIGHT	<b>1000:1</b> CONTRAST	<b>6</b> RU	<b>2"</b> DEPTH
---------------------------	-----------------------------	--------------------------------	----------------------	---------------------------	----------------	--------------------

**Inputs**      **Features**

3G-SDI Loop-Through   
 NETWORKING   
 RS-422 CONTROL   
 TALLY   
 CLOSED CAPTION 608/708   
 \*Line 21 captions not supported

**V-R241-IMD-3G**



- "All-in-one" In-Monitor Display solution
- High Resolution 1920 x 1200 panel
- On-Screen Audio Presence Indicator
- On-Screen Video Time Code



**Physical Specs**

<b>24"</b> SCREEN SIZE	<b>16:10</b> ASPECT RATIO	<b>1920x1200</b> RESOLUTION	<b>400</b> BRIGHT	<b>1000:1</b> CONTRAST	<b>2.2"</b> DEPTH
---------------------------	------------------------------	--------------------------------	----------------------	---------------------------	----------------------

**Inputs**      **Features**

3G-SDI Loop-Through   
 NETWORKING   
 RS-422 CONTROL   
 TALLY   
 CLOSED CAPTION 608/708   
 \*Line 21 captions not supported

**V-R241-DLW**



- Waveform monitor
- Vectorscope
- Time-code (LTC / VITC)
- 16 channels of audio metering



**Physical Specs**

<b>24"</b> SCREEN SIZE	<b>16:10</b> ASPECT RATIO	<b>1920x1200</b> RESOLUTION	<b>400</b> BRIGHT	<b>1000:1</b> CONTRAST	<b>2.15"</b> DEPTH
---------------------------	------------------------------	--------------------------------	----------------------	---------------------------	-----------------------

**Inputs**      **Features**

3G-SDI x2 Loop-Through   
 DVI-I   
 RS-422 CONTROL   
 WAVEFORM   
 VECTORSCOPE   
 TALLY

**In-Monitor Display (IMD)**

AUDIO LEVEL   
 CLOSED CAPTION 608/708   
 DUAL LINK COMPATIBLE   
 2K COMPATIBLE

\*Line 21 captions not supported

**QV241-3G**

**NEW**



**QV**  
QUAD VIEWER

- Native Resolution 1920 x 1200 LCD panel
- Accepts up to 4 HD-SDI inputs and 1 VGA/DVI high resolution input
- VGA/DVI can accept up to 1920 x 1200 resolution
- IMD (In-Monitor Display) capability

**3D-241-HDSI**



- 1920 x 1200 LCD panel
- High quality 3D display with circular polarizing technology
- 4 HD-SDI inputs for simultaneous monitoring two S3D (right eye / left eye) camera rigs
- 3D, 2D side-by-side, and difference map display options

**OR-2410**



**orchid**

- Supports most standard video formats
- High Resolution 1920 x 1200 LCD panel
- Real-time Waveform Monitor
- Real-time Color Vectorscope
- Real-time 16CH Audio Level Meter
- Real-time Histogram
- Real-time Video analytics
- Broadcast Tally System
- 3G/HD/SD-SDI Input and Active Loop-Through
- A-FRC Panel & Image Process
- 3D Review
- False Color Filter

**V-MD241**

**NEW**



**MD**  
MODULAR DESIGN

- Swap and interchangeable video modules
- Native 1920 x 1200 resolution screen
- Two available input slots

Physical Specs

**24"** SCREEN SIZE | **16:10** ASPECT RATIO | **1920x1200** RESOLUTION | **400** BRIGHT | **1000:1** CONTRAST | **2.2"** DEPTH

Inputs

**3G** 3G-SDI x 2 | **DVI-I**

Features

**In-Monitor Display** **IMD** | **RS-422** CONTROL | **TALLY**

**V-R261-DLW**



**DLW**  
SERIES

- Real-time Waveform Monitor, Time-code (LTC / VITC), Vectorscope
- 16 channels of audio metering

**V-R261-IMD-3G**



**In-Monitor Display** **IMD**

- "All-in-one" In-Monitor Display solution
- High Resolution 1920 x 1200 panel
- On-Screen Audio Presence Indicator
- On-Screen Video Time Code

**QV261A-HDSI**



**QV**  
QUAD VIEWER

- Native Resolution 1920 x 1200 LCD panel
- Accepts up to 4 HD-SDI inputs and 1 VGA/DVI-I high resolution input
- VGA/DVI can accept up to 1920 x 1200 resolution
- IMD (In-Monitor Display) capability for each input

**QVW-2710**

**NEW**



**QV**  
QUAD VIEWER

- 2K and 4K Compatible
- High Resolution 2560 x 1440 resolution
- Quad Viewer and Side by Side modes

**OR-3210**



**orchid**

- Supports most standard video formats
- High Resolution 1920 x 1200 10-Bit IPS LCD panel
- Real-time Waveform Monitor, Real-time Color Vectorscope, Real-time 16CH Audio Level Meter, Real-time Histogram, Real-time Video Analytics

Physical Specs

**26"** SCREEN SIZE | **16:10** ASPECT RATIO | **1920x1200** RESOLUTION | **400** BRIGHT | **1000:1** CONTRAST | **2.5"** DEPTH

Inputs

**3G** 3G-SDI x 2 Loop-Through | **DVI-I**

Features

**In-Monitor Display** **IMD** | **RS-422** CONTROL | **WAVEFORM** | **VECTORSCOPE** | **TALLY** | **CC 608 708** AUDIO LEVEL | **CLOSED CAPTION** COMPATIBLE | **DUAL LINK** COMPATIBLE | **2K** COMPATIBLE

\*Line 21 captions not supported

Physical Specs

**26"** SCREEN SIZE | **16:9** ASPECT RATIO | **1920x1200** RESOLUTION | **500** BRIGHT | **800:1** CONTRAST | **2.1"** DEPTH

Inputs

**3G** 3G-SDI Loop-Through

Features

**NETWORKING** | **RS-422** CONTROL | **TALLY** | **CC 608 708** CLOSED CAPTION COMPATIBLE

\*Line 21 captions not supported

Physical Specs

**26"** SCREEN SIZE | **16:9** ASPECT RATIO | **1920x1200** RESOLUTION | **500** BRIGHT | **800:1** CONTRAST | **2.17"** DEPTH

Inputs

**HD-SDI x 4** Loop-Through | **DVI-I**

Features

**In-Monitor Display** **IMD** | **RS-422** CONTROL | **TALLY**

Physical Specs

**27"** SCREEN SIZE | **16:9** ASPECT RATIO | **2560x1440** RESOLUTION | **350** BRIGHT | **1000:1** CONTRAST | **2.5"** DEPTH

Inputs

**3G** 3G-SDI x 4

Features

**In-Monitor Display** **IMD** | **RS-422** CONTROL | **DUAL LINK** COMPATIBLE

**2K** COMPATIBLE | **4K** COMPATIBLE

Physical Specs

**32"** SCREEN SIZE | **16:9** ASPECT RATIO | **1920x1080** RESOLUTION | **400** BRIGHT | **1450:1** CONTRAST | **4.2"** DEPTH

Inputs

**3G** 3G-SDI x 2 | **COMPOSITE** | **COMPONENT**

Features

**WAVEFORM** | **VECTORSCOPE** | **TALLY** | **AUDIO LEVEL**

**DVI-I** | **VGA**

**HEADPHONE** | **AUDIO** Line OUT | **AUDIO** Line IN | **SPEAKER**

## V-LCD70MDW & V-LCD90MDW NEW

Wireless Monitor Systems and Accessories



V-LCD70MDW-3G-VMR receiver

The **V-LCD70MDW** and **V-LCD90MDW** system uses two of Marshall's most popular Camera-top field monitors and exciting new WHDI wireless technology. Together they allow freedom of movement without the restraints of cables during video production.

The basic building blocks of the system consist of the V-LCD70MDW modular 7" camera-top field monitor and the V-LCD90MDW 9" camera-top field monitor with a choice of two wireless receiver battery mounting plates: V-ABR and V-VMR. In addition, a standalone DC battery powered V-WHR receiver is available for use with any monitor that accepts an HDMI Input.

Each Monitor can be ordered with the MD-3GE 3G input module or the MDO-3G dual 3G output module. When using the MDO-3G output module, the HDS/SDI signal from the WHDI receiver will be automatically cross-converted to 3G-HDS/SDI for distribution to other monitors on the set.

### RECEIVERS

#### Choice of two wireless receiver battery mounting plates



**V-ABR**

when using Anton-Bauer® batteries



**V-VMR**

when using the IDX® style V-Mount batteries



**V-WHR**

Standalone Battery Powered Wireless Belt Receiver

### WHDI TRANSMITTERS

**V-WHT-B**

Battery Powered WHDI Belt Transmitter



**V-WHT-A**

Self Contained HDMI / WHDI Stick Transmitter



There are two styles of transmitters available for use with any of the three receivers. The camera powered V-WHT-A "stick" transmitter plugs directly into the HDMI output port on most video cameras while the V-WHT-B "belt" transmitter can be worn on the camera operator's belt or mounted to the camera hot shoe. Each transmitter has an HDMI 1.3 interface, a 30-meter range and supports a maximum video resolution 1080p 60Hz. with no line of sight restriction.

The monitor receivers and transmitters are compliant with WHDI 1.0 and are HDCP copy protection compliant. Uncompressed video and audio is transmitted wirelessly with less than a 1 millisecond delay.

**V-WHT-B**

Battery Powered WHDI Belt Transmitter clipped to the belt

**V-WHT-B**

WHDI Belt Transmitter connected to camcorder

**V-WHT-A**

Stick Transmitter plugged into camcorder



## VS-WM202-HDSDI NEW Full HD Mega-Pixel Rugged PTZ Camera

From Tank to Tower, Car or OB Van the **VS-WM202-HDSDI** is ideally suited for Military, Law Enforcement, News Gathering and Surveillance. The VS-WM202-HDSDI is designed to be used in the most demanding environments with extreme reliability.

The VS-WM202 uses precise Stepping motor technology in conjunction with heavy duty worm gear drive to provide exceptional pan tilt accuracy and stability. The included IR illuminators allow crisp images from up to 600 feet (200m) with manual focus while the 1/2.8" 2M Pixel sensor produces dazzling broadcast quality 1080i/60 (1080p/30) HDSDI video, the 24-pin heavy duty long life slip-ring allows full 360° panning. Low light is no problem for the VS-WM202 "Tank Cam" as the camera will capture images with as little as 0.5 lux at 1/30 sec.



From tank to tower to mobile



- 1/2.8" 2M Pixel CMOS image sensor that supports FULL HD (High Definition)
- Progressive scan and Auto WDR
- 20x optical zoom and F1.6 aperture (optical zoom + 12x digital zoom = 240x)
- Great low-light performance using high precision Noise Reduction function
- Video signals can be output as digital HDSDI and analog CVBS outputs
- Up to 63 preset positions
- Variable speed control for all motorized functions

- 360° unobstructed rotation using the heavy duty long life slip ring
- All weather, lightweight, high impact aluminum die-cast enclosure (IP66)
- Built-in wiper system
- Super IR LED 30pcs. (effective illumination distance 200m / manual focusing)
- Smart IR response by Auto Light Control (100 steps)
- Auto position calibration during power on sequence
- Auto pan with 16 steps

### VS-WM202-HDSDI SPECIFICATIONS

Image	1/2.8" 2M Pixel CMOS Sensor	White balance	AUTO, ATW, Indoor, Outdoor, One Push WB Manual WB, Outdoor Auto, Sodium Vapor
Picture Elements	1920 x 1080 Pixels	Video Out	HD-SDI - 1 channel (1080i60, 1080p30, 720p60, 1080i50, 1080p25, 720p50) CVBS - 1 channel
Lens	20x zoom F = 4.7 mm (WIDE) to 94.0 mm (TELE), F1.6 to F3.5	Pan	Auto / Manual
Digital Zoom	12x (240x with optical zoom)	Tilt	Auto / Manual
Angle of view (H)	Approx. 55.4° (WIDE end), approx. 2.9° (TELE end) (1080i mode) Approx. 37.6° (WIDE end), approx. 2.0° (TELE end) (720p mode)	Dimensions	15.4" x 8.3" x 15.3"
Min. Illumination	0.5 lux/1/30 sec, 50% (Interlace mode)	Weight	Less than 12.5Kg (27.6 lbs.)
Rec. Illumination	100 to 100,000 lux	Temperature	Operating Temp - -20°C to 50°C (-4°F to 122°F)
S/N ratio	50 dB (Weight On)	Operating Control	Humidity - 50% to 90% (4 Step Control)
Electronic shutter speed	60/30 mode: 1/1 to 1/10000 sec (22 steps) 50/25 mode: 1/1 to 1/10000 sec (22 steps)	PTZ Control	Method - RS-422 (4 wire), RS485 (2 wire)
White balance	AUTO, ATW, Indoor, Outdoor, One Push WB Manual WB, Outdoor Auto, Sodium Vapor	Power	DC11.5V ~ DC30V, AC15 ~ AC30V (60HZ), Dual Power

## VS-WC202B-HDSDI NEW Full HD Mega-pixel Rugged IR PTZ Camera



**Supports 1080i/720p 60/59.94 standards for Broadcast**

### IR Light Function

Its built-in 12pcs of 18Ø IR Lens provide visible distance of up to 120m in the dark (manual focusing).

### Auto WDR Function

The Camera delivers clear, high quality pictures even when the subject is backlit. By increasing exposure in dark areas while simultaneously decreasing it in bright areas will result in a corrected image with clear details.

- 1/3" 2M Pixel CMOS image sensor that supports FULL HD (1920 x 1080)
- Progressive scan and Auto WDR
- 20x optical zoom and F1.6 aperture (optical zoom + digital zoom = 240x)
- Good at low-light environments using the Noise Reduction function Video signals can be output as digital and analog composite outputs
- A variety of digital output formats
- Auto ICR
- 12pcs of 18Ø IR LED (120m manual focusing)
- DC12V version for vehicle application: The power ground and video ground in DC12V version is unified in common so that the power can be input from vehicle
- IP66 Outdoor Application

- Endless Pan rotation (TOP 15°~270°, BOTTOM 345°~90° tilt angle)
- Up to 63 programmable presets
- Less than 0.3° Preset Accuracy
- 8 programmable Tour, 2 Pattern
- Alarm - Move the camera to programmed Preset position with Alarm trigger. (Max. 2)
- 4 Scan (Programmable speed and diagonal scan)
- Programmable Privacy Masking (2 Zones)
- RS-422, RS-485 communication
- Multiple protocol (WTX, PELCO-D V1, PELCO-P, PELCO-D V5)
- Built-in Menu System for Setup of Programmable Functions
- Mechanical Auto Flip

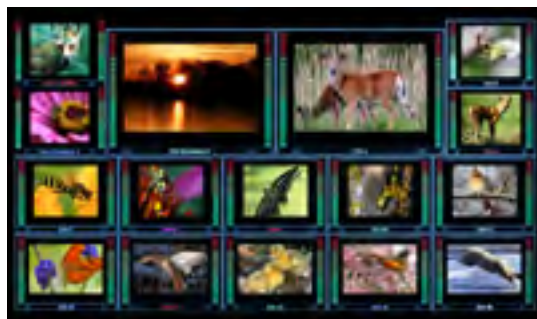
## MMV-XXI - Multi-Viewer System

The Montage **MMV-XXI** modular video multi-viewer system offers high-density delivery of 3G-SDI, HDMI, and Composite video. The 1U platform unit supports up to 6 modules. One unit can support up to 21 video input channels. The output module provides one HDMI output and one VGA output along with analog audio. The MMV-XXI provides a Xio-BUS and uses a standard SNMP protocol which can be managed by a centralized monitoring and management system. Dual redundant power supplies are standard.



Multi-viewer Display

Multi-viewer GUI



### OPTIONAL INPUT MODULES

#### MMV-CVSD SDI / Composite x 4 input module

MMV-CVSD is an input module for MMV-XXI modular multi-viewer system. The MVS-CVSD provides 4 channels of SDI/Composite (auto detect) video input and 4 channels of analog audio input. The MVS-CVSD also provides tally interface, audio absence/silence/out-of-range detection, video freezing detection, EDH detection, real-time video analysis, waveform display, and dynamic UMD function.

#### MMV-SDHD HD-SDI x 4 input module

MMV-SDHD is an input module for the MMV modular multi-viewer system. The MMV-SDHD provides 4 channels of HD-SDI (auto detect) video input and 4 channels of analog audio input. The MMV-SDHD also provides tally interface, audio absence/silence/out-of-range detection, video freezing detection, EDH detection, real-time video analysis, waveform display, and dynamic UMD function. The MMV-XXI series multi image processor is ideal for displaying HDTV and other high resolution serial digital video.

#### MMV-HDI HDMI x 4 input module

MMV-HDI is an HDMI input module for the MMV modular multi-viewer system. The MMV-HDI provides 4 channels of HDMI inputs with embedded audio. It supports the input resolution of 720p, 1080i, and 1080p. The MMV-HDI also provides audio absence/silence/out-of-range detection, video freezing detection, EDH detection, real-time video analysis, waveform display, and UMD function.

### OPTIONAL OUTPUT MODULES

#### MMV-HDOM HDMI / VGA output module

MMV-HDOM is an HDMI output module for the MMV modular multi-viewer system. The MMV-HDOM provides one HDMI and one VGA output. The MMV-HDOM also provides an HDMI input channel which can be used for connecting a computer for monitoring. The output resolution is up to 1920x1080. The VGA port has an optional mini-insert module which gives the customer a VGA output and an audio output. Operator can use any web browser to remotely control the unit through a 1000/100M Ethernet port.

#### MMV-SDIOM HD-SDI / HDMI output module

MMV-SDIOM is an output module for MMV series modular multi-viewer system. The MMV-SDIOM provides one HD-SDI and one HDMI output. The MMV-SDIOM also provides an HDMI input channel which can be used for connecting a computer for monitoring purpose. The output resolution is up to 1920 x 1080. The 15 Aux connector port has an optional breakout module which gives the customer access to the analog audio output. Customers can use a PC with any web browser to remotely control the unit through the 1000/100M Ethernet port.

- MMV-XXI-HD** Multi-Viewer System includes 20 HDSDI Inputs and One HDSDI Output
- MMV-XXI-2HD** Multi-Viewer System includes 20 HDSDI Inputs and One HDSDI Output
- MMV-XXI-B** Multi-Viewer System includes 20 HDSDI Inputs and One HDSDI Output

### DLWR-3G

Dual Link / Waveform Processor with 3G SDI support

**NEW**

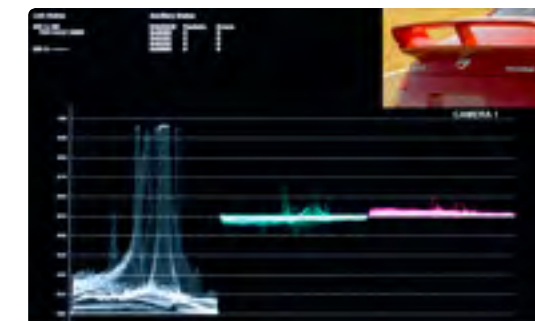


The 1RU rackmountable **DLWR-3G** processor unit incorporates dual link/dual 3GSDI, HD-SDI, SD-SDI, inputs with built in Waveform, Vectorscope, and audio levels. The unit allows the user to output these video inputs and features on to any professional or consumer grade monitor that is HDCP compliant. Main feature sets include 10-bit image processing, Time-code (LTC/VITC), 608/708 Closed Captioning, 16 channels of audio metering, IMD processing, RotoMenu controlled OSD, Four programmable function buttons, and Four different screen layouts to choose from.

### Features



**QUAD VIEWER LAYOUT**  
Screen showing video, waveform, vectorscope, and audio levels



**WAVEFORM MONITOR**  
The built-in waveform monitor can be displayed in various aspect ratios, positions, and transparency options. The waveform monitor displays YUV/RGB in both Overlay and Parade modes.



**REAL-TIME COLOR VECTORSCOPE**  
The built-in Vectorscope allows users to monitor color gamut range in real-time. It displays in various sizes, positions, and transparency options.



**FULL SCREEN WITH FEATURE SETS**  
Full screen with Scopes and Audio Levels overlaying the video with transparency options.

### QVR-HDSDI

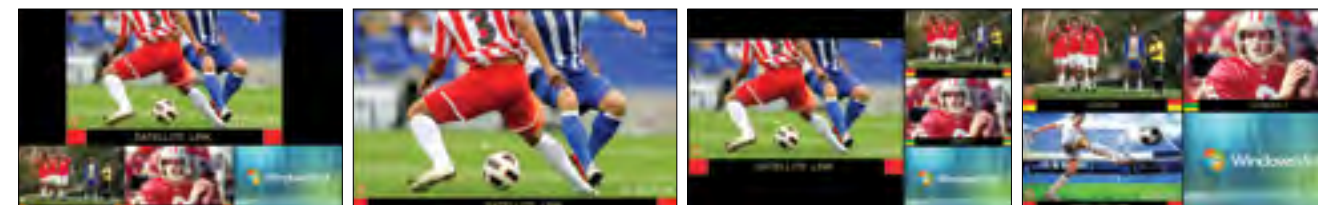
Quad Viewer Processor with HD-SDI



- Quad Viewer control box allows simultaneous viewing of 4 different signals at once on any Monitor with DVI input
- 5 inputs to choose from: HDSDI x 4 + DVI-D x 1
- 4 different layouts to choose from
- No need for external Under Monitor Display -- "all-in-one" In-Monitor Display solution
- Supports the following protocols: Image Video / NVISION / TSL / MEI
- Full Resolution 1920 x 1080 output
- New unique RotoMenu™ feature for fast, direct, and easy menu navigation
- High resolution scaling / high quality deinterlacing

- Three-color on-screen "soft" tally indicators (Red / Green / Amber)
- On-Screen Audio Presence Indicator
- On-Screen Video Time Code
- RS-422 / 485 connection with loop-through for control communication / IMD functionality
- Field upgradable firmware capability via RS-422 / 485 port
- Direct access for adjustments of brightness, contrast, and color
- Multiple Frame Marker Overlays with Center Mark
- Blue Gun for color adjustment
- Adjustment Settings Memory

### Quad-Viewer Configurations



## Digital Audio Monitors with Dolby® Digital/Dolby® E Capability

Marshall Electronics offers the AR-DM Series Rack Mount Digital Audio Monitors – high quality, ultra-nearfield audio monitoring systems for space critical environments with interchangeable input / output modules and field-upgradeable firmware capability.

Featuring four models (two 1RU and two 2RU units), the AR-DM Series Digital Rack Mount Audio Monitors are ideal for TV facilities, studios, post production, VTR bays, mobile production vehicles, satellite links, and wherever multichannel audio monitoring is required. All models support 16 audio channels with four slots available for interchangeable input / output modules. The AR-DM series provides pristine audio quality and unrivaled flexibility with 100% digital processing, Class D (digital) amplification, selectable stereo downmix modes, Dolby® Digital / Dolby® E decoding capability (with optional Dolby® E module), a headphone jack with Level control, and an RS-485 port for on-site firmware upgrades.

The AR-DM1 provides tri-color LEDs for monitoring signal presence and system status while the AR-DM1-B and AR-DM2-B provide 10 and 20-segment tri-color bargraphs respectively. Both VU and peak metering are supported. The flagship AR-DM2-L provides dual 4" high resolution 640xRGBx480 LCD monitors capable of displaying a wealth of information, including a high contrast, tri-color 16-bar graph display in one window while showing critical Metadata or Channel Status information in the other. Channel, Group, Mix, Dolby®, Balance selection, and saved configurations are easily accessed via the system's large navigation buttons. For audio playback, 1RU units provide twin loudspeakers, while 2RU models provide larger, high performance transducers and subwoofer.

### DIGITAL

#### 1RU frames

##### AR-DM1

16 Channel Digital Audio Monitor-1RU Mainframe



##### AR-DM1-B

16 Channel Digital Audio Monitor – 1RU Mainframe with Tri-Color LED Bar Graphs



- Only 1RU (1.75")
- 16 LED Indicators for channel presence (AR-DM1)
- 16 Tri-Color VU/PPM 10-Segment LED Bar Graphs (AR-DM1-B)
- User-configurable with a variety of modules
- 100% Digital Processing
- Class D Audio Amplification
- Dolby® Digital / Dolby® E Decoding (with optional ARDM-D552 module)
- Selectable Stereo Downmix Modes
- RS-485 Port enables on-site firmware upgrades
- Balance and Volume Control
- 1/4" Headphone Jack
- 4 Available Slots for Modules

**MIX & MATCH  
MODULES**

#### 2RU frames

##### AR-DM2-B

16 Channel Digital Audio Monitor-2RU Mainframe with Tri-Color LED Bar Graphs



##### AR-DM2-L

16 Channel Digital Audio Monitor-2RU Mainframe with Dual High-Resolution LCD Displays



- 16 Tri-Color VU/PPM 20-Segment LED Bar Graphs (AR-DM2-B)
- 2 High Resolution LCD Displays capable of displaying meters, metadata, channel status, and more (AR-DM2-L)
- User-configurable with a variety of modules
- 100% Digital Processing
- Class D Audio Amplification
- Powerful Stereo Speakers and Subwoofer
- Dolby® Digital / Dolby® E Decoding (with optional ARDM-D552 module)
- Selectable Stereo Downmix Modes
- RS-485 Port enables on-site firmware upgrades
- Balance and Volume Control
- 1/4" Headphone Jack
- 4 Available Slots for Modules

**MIX & MATCH  
MODULES**

### INPUT / OUTPUT MODULES



#### ARDM-HSDI

- Multi-Rate SDI/HD-SDI Video Input (Auto-Detect)
- Re-Clocked SDI/HD-SDI Loop-Through Output
- SDI: SMPTE 259M-C / HD-SDI: SMPTE 292M
- Supports 8 Stereo Embedded Channels or Dolby® Multi-Channel Decoding\*



#### ARDM-AES-BNC

- 4 Unbalanced AES/EBU Inputs (BNC)
- 4 Passive Loop-Through Outputs (BNC)
- Supports 4 Stereo Channels or Dolby® Multi-Channel Decoding\*



#### ARDM-AES-XLR

- 4 Balanced AES/EBU Stereo Inputs (DB-25)
- 4 Passive Loop-Through Outputs (DB-25)
- Break-Out Cable included (DB-25 to 8 XLR)
- Supports 4 Stereo Channels or Dolby® Multi-Channel Decoding\*



#### ARDM-AA-8XLR

- 8 Balanced Analog Audio Inputs (DB-25)
- Nominal level : 0, +4, +6, or +8 dBu = -20dBFS
- Break-Out Cable included (DB-25 to XLR)



#### ARDM-AA-2OUT

- 2 Balanced Analog Audio Outputs
- Nominal level : -20 dBFS = +8 dBu
- Excellent for on-the-fly 2-channel monitoring



#### ARDM-AES-4OUT

- 4 Unbalanced AES/EBU Outputs (75Ω BNC)
- Capable of 4 AES/EBU Outputs De-embedded from HD-SDI or SD-SDI input
- Capable of 4 AES/EBU Outputs Decoded from Dolby® E / Dolby® Digital bitstream\*



#### ARDM-D552

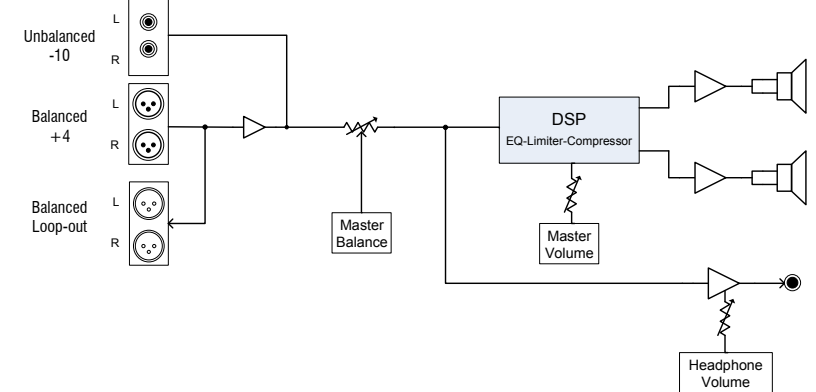
- Dolby® E / Dolby® Digital Decoder Module
- \* Required for multi-channel decoding

\*Requires optional Dolby® E / Dolby® Digital Decoder Module (ARDM-D552)

### ANALOG

#### AR-AM1

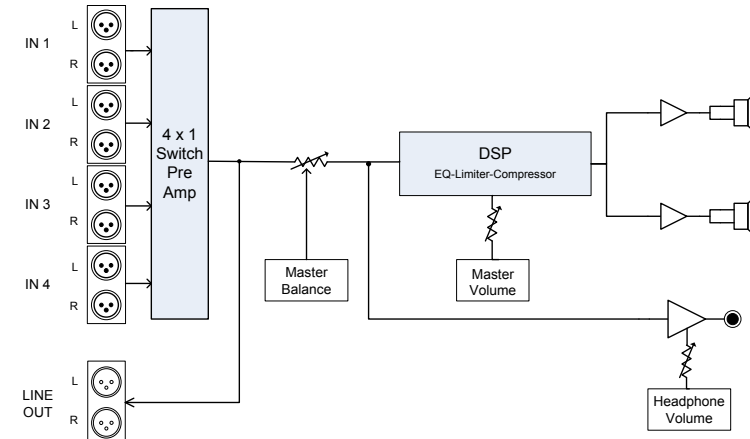
High Quality 1RU Rack Mountable Analog Audio Monitor with Digital Signal Processing



- Fits 1RU rack space
- High Fidelity Miniature Speakers
- Volume and Balance controls
- High Quality DSP Processing
- 1 Analog Stereo-Balanced XLR Input
- 1 Passive Stereo-Balanced XLR Output
- 1 Stereo Analog Unbalanced RCA Input
- 1/4" Stereo Headphone Jack on front panel
- CE approved / RoHS compliant

#### AR-AM4

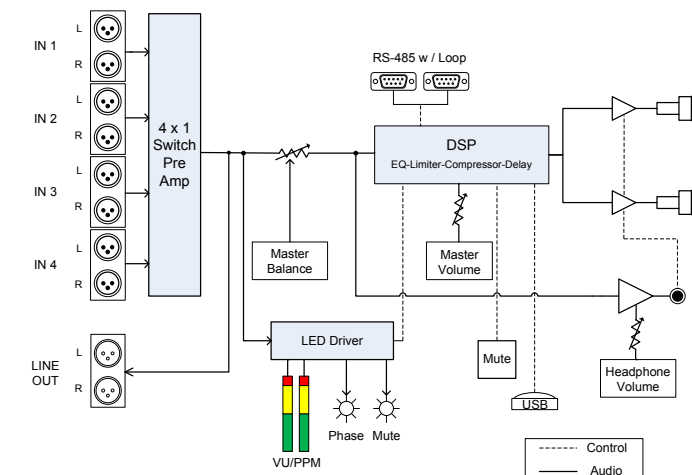
High Quality 1RU Rack Mountable Analog 4-Channel Audio Monitor with Digital Signal Processing



- Fits 1RU rack space
- High Fidelity Miniature Speakers
- Volume and Balance controls
- Channel Selector
- High Quality DSP Processing
- 4 Analog Stereo-Balanced XLR Inputs
- 1 Passive Stereo-Balanced XLR Output
- 1/4" Stereo Headphone Jack on front panel
- CE approved / RoHS compliant

#### AR-AM4-BG

High Quality 1RU Rack Mountable Analog 4-Channel Audio Monitor with DSP and Peak Meters



- Fits 1RU rack space
- High Fidelity Miniature Speakers
- Bi-Color Phase Indicator
- Volume and Balance controls
- Channel Selector
- Quality DSP Processing
- Rear panel RS-485 for external control
- 4 Analog Stereo-Balanced XLR Inputs
- 1 Passive Stereo-Balanced XLR Output
- 1/4" Stereo Headphone Jack on front panel
- Dual 10-Channel Bar Graph Peak Meters
- Headphones automatically mute internal speakers
- Front Panel Mute Button
- CE approved / RoHS compliant



SUN HOODS



**V-H70X**  
Hood for V-LCD70XHB series 7" monitors



**V-H50**  
Hood for V-LCD51, V-LCD50-HDI



**V-H56MD**  
Hood for V-LCD56MD



**V-H70MD**  
Hood for V-LCD70MD



**V-H90MD**  
Hood for V-LCD90MD



**OR-8HO**  
Hood for OR-841-HDSOI



**OR-9HO**  
Hood for OR-901



**V-H10M**  
Hood for 10.4" monitors

MONITOR MOUNTS



**M-SM02**  
Camera-Top Monitor Stand



**V-NF1108-CA** (1/4"-20 / 1/4"-20)

**V-DG1108-CA** (1/4"-20 / 1/4"-20)

**V-MG6145-CA** (1/4"-20 / 3/8")

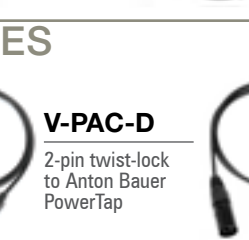
STANDS



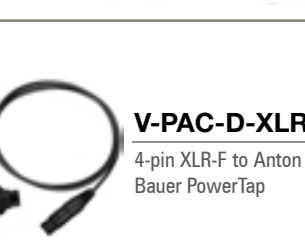
**V-ST08**  
Fixed stand for V-R841DP-AFHD, V-LCD84SB-AFHD, V-R1041DP-AFHD



**V-ST15**  
Fixed stand for 15" - 17" monitors



**V-ST20**  
Fixed stand for 20" monitors



**V-ST23-32**  
Fixed stand for 24" - 26" monitors

CABLES



**V-PAC-D**  
2-pin twist-lock to Anton Bauer PowerTap



**V-PAC-XLR**  
2-pin twist-lock to 4-pin XLR-M



**V-PAC-D-XLR**  
4-pin XLR-F to Anton Bauer PowerTap



**V-PAC-XLR-1**  
4-pin XLR-F to XLR-M

BATTERY ADAPTOR PLATES



DSLR batteries



Camcorder batteries

V-LCDxxMD Battery Compatibility

FIELD-INTERCHANGEABLE BATTERY ADAPTER OPTIONS		
MARSHALL MOUNTING PLATE ADAPTER	BATTERY TYPE	RECOMMENDED BATTERY / VOLTAGE
0071-1307-A	Canon	Canon BP-970G / 7.2V
0071-1308-A	JVC	JVC BN-V438U / 7.2V
0071-1306-A	Panasonic	Panasonic CGA-D54 / 7.2V
0071-1309-A	Panasonic	Panasonic VW-VBG6 / 7.2V
0071-1305-A	Sony B Series	Sony BP-V60 / 14.4V
0071-1304-A	Sony M Series	Sony NP-QM91 / 7.2V
0071-1303-A	Sony L Series	Sony NP-F970 / 7.2V
0032-1301-A	V-Mount	
0032-1302-A	Anton Bauer	Anton Bauer Hytron 50/14.4V
DSLR-CB	Canon	Canon BP-511/7.4V
DSLR-CL	Canon	Canon LP-E6/7.4V
DSLR-CL2	Canon	Canon Dual MB-LP-E6/7.4V
DSLR-NE	Nikon	Nikon EN-EL3e/7.4V

MD MODULES Input Modules for MD series monitors

OPTIONAL INPUT MODULES



**3G-SDI**  
**MD-3GE MD-3GSDI-B**  
3G-SDI Input Module with Loop-Through



**HDI**  
**MD-HDIx2-A MD-HDIx2-B**  
Two-channel HDI Input Module

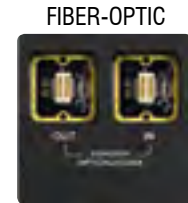


**DUAL HD-SDI**  
**MD-HDSOIx2-A MD-HDSOIx2-B**  
Two-channel HD-SDI Input Module with switched output



**DVI**  
**MD-DVII-A MD-DVII-B**  
DVI Input Module

OPTIONAL OPTICAL MODULE with TELECUBE™ INPUTS / OUTPUTS



**MD-TC-A MD-TC-B**  
TeleCube™ Input/Output Base Module



**TC-RxO**  
Optical Receiver Cube with ST connector



**TC-RxE**  
Electrical Receiver Cube with BNC connector



**TC-TxO**  
Optical Transmitter Cube (FP Laser @ 1310nm) ST Connector



**TC-TxE**  
Electrical Transmitter Cube with BNC connector

\*Input modules are optional and available at additional cost. More input modules to be offered in the future. Please visit [www.lcdracks.com](http://www.lcdracks.com) for more updates and information.

OR-XDI Portable Battery-Powered 3G-SDI to HDMI Cross Converter



Shown with small battery adaptor

- Battery operable 7.2V or 14.4V (includes one Marshall small battery plate of choice)
- Choose between 1 x 3G-SDI Input or 1 x HDMI Input
- Simultaneously outputs two 3G-SDI signals and one HDMI signal at the same time HDMI-to-SDI / SDI-to-HDMI conversion including Audio
- Automatic input port switching
- Automatic video format detection
- Built-in SD format interlacer for DSLR while recording (480p to 480i conversion)
- Status LEDs indicate link speed and health
- Consumes 50% less energy and operates twice as long as competing converters
- Built-in Color Bar
- Test Pattern Generator
- 8-position piano switch (input port selection, power save)
- USB service port for future upgrades
- Rugged metal alloy case
- Dual size mounting holes (1/4-20)
- EIA 12VDC External Power Jack
- 4-pin XLR 12VDC Input available as an option
- 3.91"W x 2.28"D x 1.38"H
- Weighs only 7.6 ounces (without battery)

The ORCHID® OR-XDI is a rugged and portable battery-powered HDMI to 3G-SDI / 3G-SDI to HDMI cross converter. It allows an HDMI video signal to be converted from HDMI to 3G-SDI (with audio) to feed two other monitor sources on location. It can also be used to take the 3G-SDI output from production cameras to feed both the HDMI input of an external monitor while simultaneously feeding the 3G-SDI to other locations and equipment. The OR-XDI can be powered using a consumer-type 12V EIA power adapter, optional 4-pin XLR, or by using a wide variety of Marshall small battery mounts. This is the perfect tool for any director, camera operator, or production video village.

OR-XDI CONVERSIONS



OR-XDI Orchid OR-CP2 Color Probe **NEW** For use with ALL Orchid monitors for Automatic Color Calibration



The OR-CP2 is the companion calibration tool for use on all Orchid monitors. The kit comes complete with everything you will need to perform LCD White Balance calibration as well as monitor firmware upgrades. The calibration procedure is as easy as plugging the probe and service module into the service slot of the Orchid you wish to calibrate and selecting the calibrate function from the Color sub menu. The calibration process is automatic and quick completing the adjustments in less than one minute.



INTERVIEW KITS



**NEW**

**FR-500WK** Professional Portable Wireless Audio System



The **FR-500WK** Professional Portable Wireless Audio System is designed for videographers conducting interviews or recording onscreen talent via an easily concealed lavalier microphone. The lavalier mic is used with the transmitter while the receiver can be mounted directly onto the hot shoe mount of a DSLR camera.

The **FR-500WK** interview kit provides high sound quality in a compact, portable design, and it has a long transmission range - perfect for field work. The **FR-500WK** has a wide frequency response for accurate sound reproduction. The kit is comprised of the **FR-500WT** Transmitter and the **FR-500WR** Receiver.

The **FR-500WT** Transmitter has a built-in microphone, 1/8" (3.5 mm) mic jack, and mono line in. A discreet omni lavalier microphone is included.

The **FR-500WR** Receiver has a built-in speaker, 1/8" (3.5 mm) headphone jack, and line out. A hot shoe adapter and a 1/8" to 1/8" cable are included to mount the receiver on top of a DSLR camera.



Cardioid\*

Omni\*

**FR-355K** Lavalier Mic Kit

\* Windscreens included

The microphones in the **MXL FR-355K** kit were designed with high quality FET pre-amps to ensure outstanding audio quality even under the most demanding conditions. The **FR-355K** kit contains two different microphones that require 48V phantom power to operate. They are both supplied with foam windscreens and clips.

**FR-310** Hot Shoe Shotgun Microphone



The **MXL FR-310** video mic delivers sound that's as focused as the video. Mount it onto your camcorder or DSLR camera, and you'll cut to tighter, cleaner sound recordings. The **FR-310** shuts out sound from the sides and back with a pickup pattern that targets sound in front of the camera. Three gain settings pull in the right amount of sound in close-up or long shot situations, while a bass roll-off switch leaves low-frequency noise on the cutting-room floor. The integrated windscreen helps block wind noise, which aids in keeping your sound in the picture.

**FR-304** 14.5" Shotgun Microphone

The **MXL FR-304** Shotgun Microphone is a great choice for the consumer, semi-pro or professional videographer on the go. The **FR-304** includes a FET preamp and can be used in a variety of situations either under its own power or via a camera. It is powered with a standard AA battery with 160+ hour life.



SHOTGUN MICROPHONES

**FR-330M** 6" Shotgun Microphone

**NEW**



When the subject is further than a built-in camera mic will effectively record, you'll need a good shotgun mic like the **MXL FR-330M**. Measuring only 6 inches in length, the **MXL FR-303** offers clear, high-quality recordings and is perfect for videographers who want a shorter mic mounted on camera.

**FR-301** 16.6" Super-Cardioid Shotgun Microphone

Designed for video production and broadcast professionals, the **MXL FR-301** phantom powered shotgun microphone offers clear, accurate recordings and exceptional side rejection. Measuring over 16 inches, the **FR-301's** narrow pattern allows you to single out your subject when there is unwanted background noise the built-in camera mic can't handle. This mic can also be used for general video recordings like weddings as well as for Foley work and interviews.



BOUNDARY MICROPHONES

**FR-400M** Boundary Microphone

Although it's commonly used in front of a stage to pickup concerts or theater events, the **FR-400M** boundary mic has a wide cardioid pattern and can be used in other applications like under the lid of a piano. The switch located on the bottom of the mic can be used to boost or cut low frequencies by 6 dB in order to balance the frequency response.



**FR-432M** Table Interview Boundary Microphone

**NEW**

The **MXL FR-402** is a multi-purpose boundary mic with a wide pattern and low profile. You can use this mic on a number of different sources in almost any location. It's also right at home on a conference table, recording interviews, connected to a video camera for field recording or capturing audio from a concert or play.



**FR-401M** Boundary Microphone

The **MXL FR-401M** boundary mic is designed to pickup multiple sources from a distance while avoiding unwanted sounds from behind the mic. Some common applications include recording interviews, live concerts, studio recording sessions, or plugging directly into a video camera to make sure you get all the audio on set.



BROADCAST MICROPHONES

**BCC-1** Broadcast Condenser Microphone



The **MXL BCC-1** brings a balanced sound to broadcasts. This small-diaphragm condenser microphone delivers detailed recordings with outstanding accuracy. It has a built-in shockmount and a tuned grill that eliminates internal reflections, so you'll get clean broadcasts with unwanted noise blocked out. And it's perfect for low voices, with a bass roll-off switch that captures all of the warmth but keeps the sound clear.



**BCD-1** Broadcast Dynamic Microphone



The **MXL BCD-1** is a dynamic mic for dynamic broadcasters. It gives voices a bright sound that adds a little spark to broadcasts, and it's excellent for recording vocals for music. It's made to give clean recordings. The **BCD-1** has outstanding side rejection, a built-in shockmount and a tuned grill that eliminates internal reflections, so unwanted noise won't stand a chance.



MICROPHONE ACCESSORIES

**MBR7**

The **MBR7** bracket can accommodate a camera-top monitor or light, plus a microphone on top of the camera at one time.



**NEW**

**MXL BCD-Stand**

Professional studio desktop microphone stand with built-in XLR cable. Includes screw mount and clamp mount. Mic not included.



