

# RONIN-M

Quick Start Guide

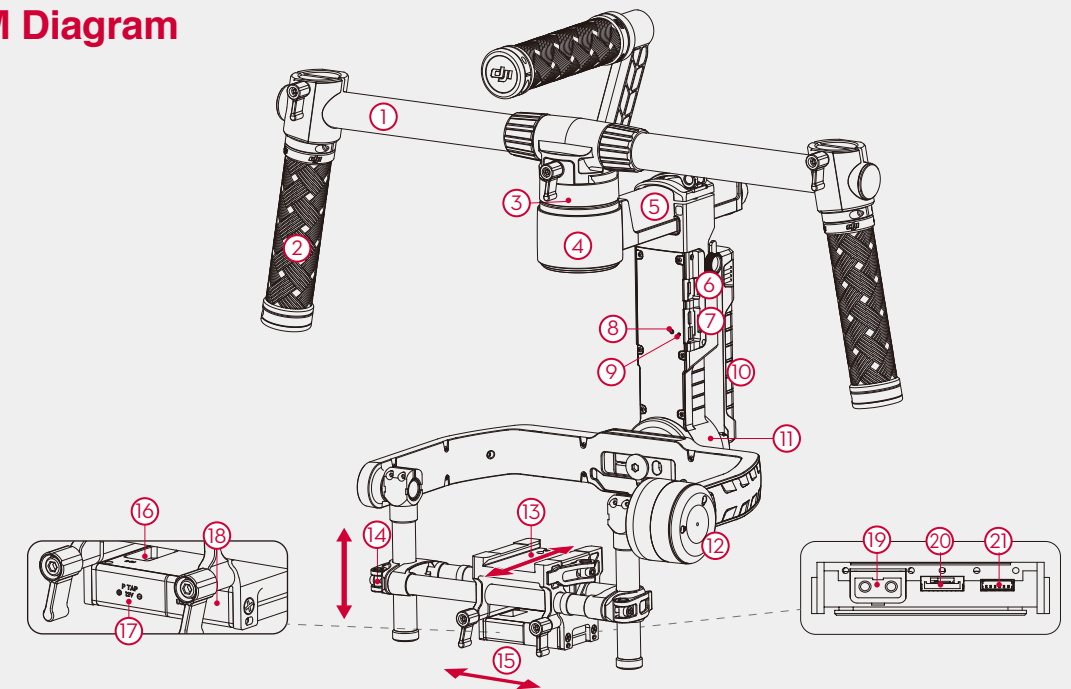
V1.6



# RONIN-M

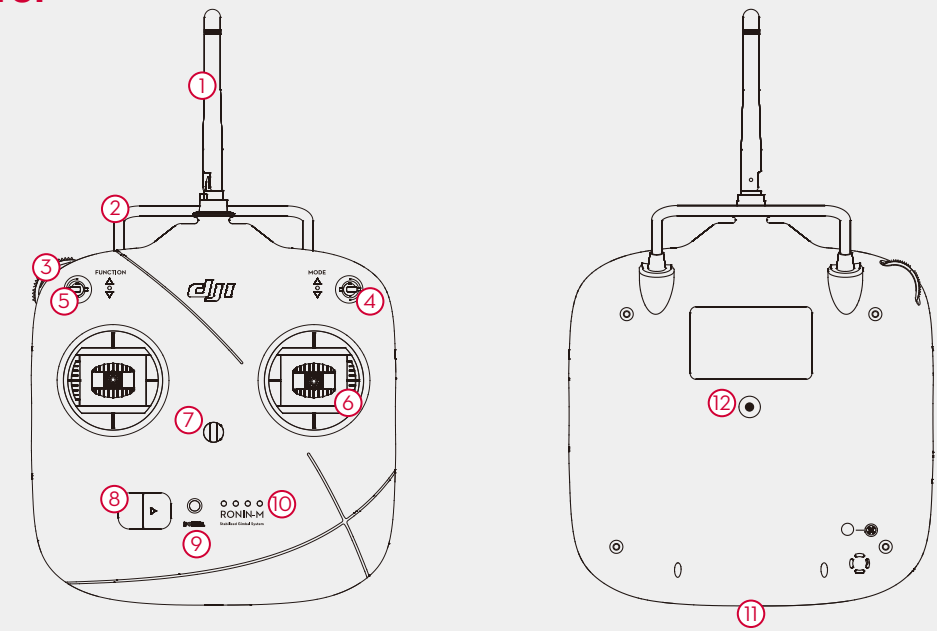


## Ronin-M Diagram



- |                          |                              |  |
|--------------------------|------------------------------|--|
| 1. Top Handle Bar        | 8. Bind Button               | 15. Roll Adjustment                        |
| 2. Side Handle           | 9. Gimbal LED Indicator      | 16. IMU Port                               |
| 3. Quick Release Mount   | 10. DJI Intelligent Battery  | 17. P-TAP Accessory Power Port             |
| 4. Pan Motor             | 11. Roll Motor               | 18. USB Accessory Power Port               |
| 5. Pan Adjustment Slider | 12. Tilt Motor               | 19. P-TAP Accessory Power Port (rear side) |
| 6. D-Bus Receiver Port   | 13. Fore and Aft Adjustment  | 20. DJI Lightbridge Port (rear side)       |
| 7. USB Port & CAN Port   | 14. Tilt Vertical Adjustment | 21. GCU Port (rear side)                   |

## Remote Control



- |                               |   |
|-------------------------------|---|
| 1. Antenna                    | 7. Neck Strap Attachment                                  |
| 2. Carrying Handle            | 8. Power Switch   |
| 3. Left Dial (reserved)       | 9. Power Indicator  |
| 4. 3-Position Switch MODE     | 10. Battery Level Indicators                              |
| 5. 3-Position Switch FUNCTION | 11. Battery Charging & RC Assistant Port (Micro-USB port) |
| 6. Joysticks                  | 12. Reserved Port   |

# RONIN-M

## Quick Start Guide

### 1 Start

- Download and install the DJI Assistant app. Search "DJI Assistant" on the App Store and then follow the instructions for iOS installation. Search "DJI Ronin" on the Google Play and then follow the instructions for Android installation.
- Before you start using your Ronin-M, be sure to charge the DJI Intelligent Battery first. Pressing the Intelligent Battery power button once will display the current battery level. Press and hold for 1 second to turn on/off.
- Slide the power switch to the right to power on the remote control. The battery level indicators display the current battery status. If the low voltage alert sounds, recharge the battery via the micro USB port.



DJI Assistant

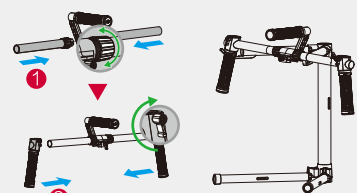
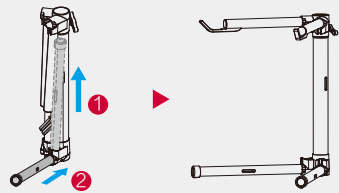


Low ← Battery Level → High

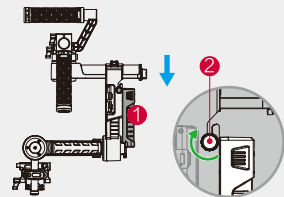
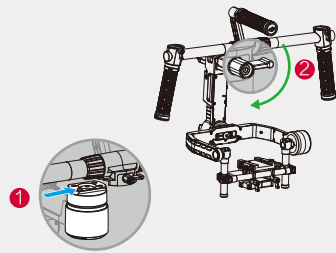
- Refer to the User Manual for more DJI Intelligent Battery information.
- Use a mobile device that runs iOS 7.0 or above or Android 4.3 or above.

### 2 Assembling the Ronin-M

- Deploy the tuning stand as shown. Remove the lower legs from their vertical position and install them into the bottom base of the stand. Remove the upper legs from their vertical position and install them into the upper base of the stand. Be sure the locator slots are lined up.
- Assembling the handle bar. Attach the handle bars to both sides of the top handle and tighten the grip screws. Attach the grips to the handle bar and lock them in the preferred position. Place the handle assembly on the tuning stand.



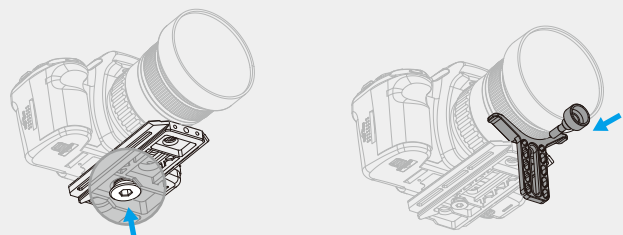
- Attach the Ronin-M to the handle. Slide the handle bar horizontally into the gimbal and tighten the lock-knob.
- To mount the DJI Intelligent Battery into the Ronin-M, loosen the thumb screws on either side of the battery and slide it directly into the gimbal and then slide down. Tighten the thumb screws. Ensure the battery is seated all the way down.



- Make sure the battery is powered off during the installation process.

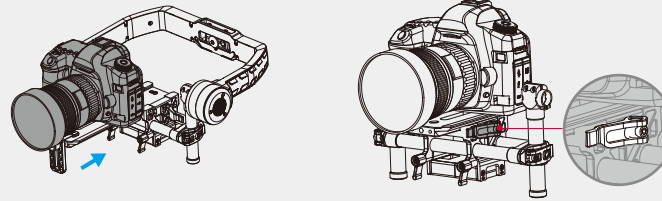
### 3 Mounting the Camera on the Mounting Plate

- Attach the camera to the mounting plate and tighten the screws.
- Attach the lens support to the mounting plate.
- Apply upward pressure to the lens support and tighten the screw.



### 4 Mounting the Camera on the Ronin-M

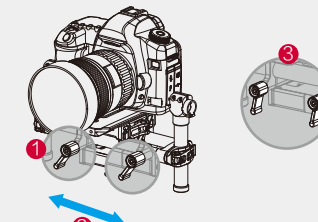
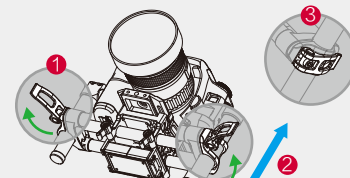
Insert the camera until the safety lock engages. Make sure the camera first achieves a rough balance by sliding the camera platform forward and back. The camera should not tilt forward (lens heavy) or tilt backward. When you have arrived at a rough balance, tighten the side clamp.



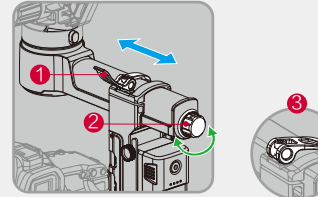
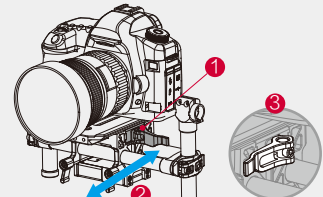
- The camera needs to be fully setup with all accessories prior to installing and balancing on the gimbal.

### 5 Balancing

- Balancing the Vertical Tilt**  
Rotate the tilt axis so that the camera lens is pointing upward and loosen the two vertical adjustment tabs. Gently slide the camera mount crossbar forwards or backwards until the camera points upwards when released. Latch the tabs back into their closed position to tighten.
- Balancing the Roll Axis**  
Loosen the two lock-knobs to slide the camera left or right until the roll axis remains level, and then tighten the two lock-knobs.

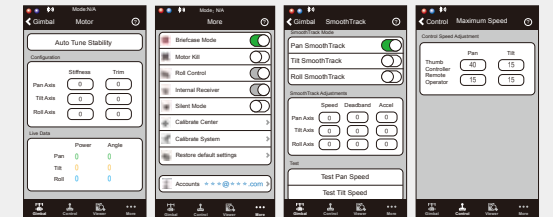


- Balancing Depth for the Tilt Axis**  
Loosen the side clamp to slide the camera forwards or backwards until the tilt axis remains level and then tighten the side clamp.
- Balancing the Pan Axis**  
Open the clamp on the pan axis and turn the knob to slide the assembly. Tighten the clamp after balancing is completed.



### 7 DJI Ronin-M Assistant App Settings

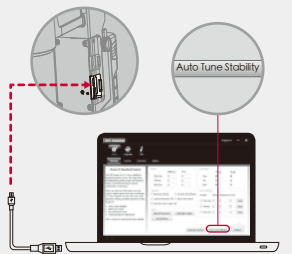
- With the Ronin-M on the tuning stand and a properly balanced camera, tap the Auto Tune Stability button.
- Switch on/off the Briefcase Mode as needed.
- Switch on/off the SmoothTrack Mode as needed. In the SmoothTrack options menu, the settings for the pan axis, tilt axis and the roll axis can be independently adjusted.
- Adjust the control speed.
- If the Ronin-M starts to vibrate, go into the "Motor" page and reduce stiffness settings.



- For more information, please refer to the User Manual.

### 8 Pairing with PC/MAC Assistant (Alternate Work Flow)

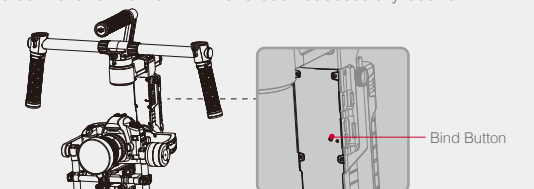
- Connect the Ronin-M to your computer via USB cable and be sure the Ronin-M is powered on.
- Download the PC/MAC Assistant from DJI.com (ensure you have also installed the DJI Windows Driver first if you are installing it on a Windows Operation System), and then launch the Assistant.
- Click the Auto Tune Stability button.
- Reduce motor stiffness settings if the Ronin-M shakes.
- Switch on/off the Briefcase Mode and SmoothTrack Mode as needed. Adjust the maximum control speed.



- The tuning abilities of the DJI Assistant app and DJI PC/MAC Assistant are the same. There is no need to repeat your settings in both Assistants.
- The DJI Ronin-M Assistant app and the PC/MAC Assistant program cannot be simultaneously launched and connected at the same time. If running the Assistant app on your mobile device, be sure to disconnect the micro USB cable.

### 9 Connecting the Remote Control to Ronin-M

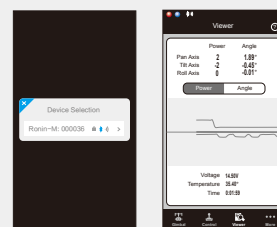
- Turn on the Ronin-M.
- Press the recessed Bind Button (shown below) of the Ronin-M once with something sharp such as a paperclip.
- Slide the power switch to the right to power on the remote control. If the LED of gimbal turns solid green light, the remote control and the Ronin-M have been successfully bound.



- Test the remote control to see if it is paired.

### 6 Pairing with the DJI Ronin-M Assistant App

- Power on the Ronin-M. Switch on Bluetooth on your mobile device and launch the DJI Assistant app.
- Connect your mobile device to the Ronin-M within the DJI Assistant app.
- When using the app for the first time, you will be prompted to register using a valid e-mail address.
- Check balance in the Viewer page. If a particular motor axis indicates a power greater than 10, please rebalance the camera.



### 10 Remote Control Operation

- MODE:**  
The MODE switch is used for toggling SmoothTrack.  
Position 1: -Free, SmoothTrack Off  
Position 2: -Free, SmoothTrack On  
Position 3: -Reset to Center, SmoothTrack On
- FUNCTION:**  
The FUNCTION switch is used to select the SmoothTrack speed.  
Position 1: -Fast  
Position 2: -Normal  
Position 3: -Slow
- Activating Motor Kill Switch by quickly flipping the FUNCTION switch up and down 3 times. This will enable/disable Motor Kill.
- Left Stick:** Horizontal movements on the left stick control the roll axis.
- Right Stick:** Horizontal movements on the right stick control the pan axis. Vertical movements on the right stick control the tilt axis.

