

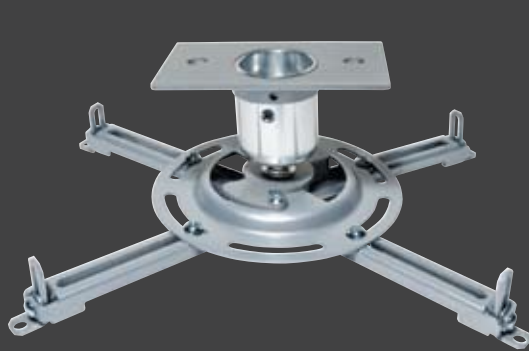
MOUNTING SOLUTIONS for Epson projectors



Epson offers a full range of projector ceiling mounts designed to meet your installation needs.

Whatever the setting, whichever Epson projector you'd like to install, you'll find a mount that's made to fit.

Choose from a variety of mounts and accessories that make it easy to customize any setting.



Universal Projector Ceiling Mount

For value and versatility

With its low profile and versatile design, this mount offers a clean, sleek appearance, making it perfect for use in classrooms, boardrooms, hotels and restaurants, or virtually anywhere a projector needs to be mounted.

- Universal adapter plate fits nearly all projectors up to 50 lb
- Single adjustment point facilitates quick image alignment
- Convenient design makes flush mounting easy for low-profile installations
- Quick-release mechanism offers easy projector access
- Extension column connector makes it easy to route cables through a 1.5" extension column or pipe
- Pre-assembled design saves installation time
- Security hardware supports theft prevention

Part Number: ELPMBPJF

Dimensions: 7.1" x 7.1" x 4.2" (W x D x H)

Weight: 2.9 lb

Color: Silver

Tilt: $\pm 15^\circ$, Roll: $\pm 15^\circ$, Swivel: 360°

Packaging Specifications

Dimensions: 12.1" x 6.1" x 3.1" (W x D x H)

Weight: 3.5 lb



Precision gear

Advanced Projector Ceiling Mount with Precision Gear

For superior function and accuracy

With a patent-pending, precision gear design, this mount facilitates exact tilt- and roll-image positioning with the simple turn of a knob. Once the installer sets the gear to the desired position, it stays securely in place.

- Dedicated projector mounting plates fit all Epson business projectors* up to 50 lb
- Two adjustment knobs control projector image alignment — adjust tilt and roll with a screwdriver or extend the knobs to adjust by hand
- Horizontal wrench access slots make flush mounting installations fast and easy
- Pre-assembled design saves installation time
- Quick-release mechanism offers easy projector access
- Security hardware supports theft prevention

Part Number: ELPMBPRG

Dimensions: Middle plate configuration: 10.5" x 6.5" x 2.5" (W x D x H)

2-plate configuration: 13.6" x 11.1" x 2.6" (W x D x H)

Weight: 4.9 lb

Color: White

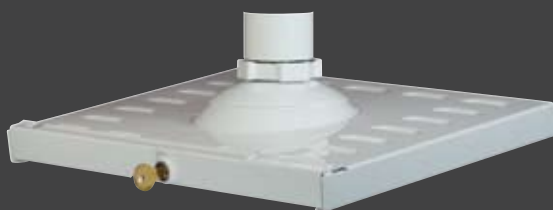
Tilt: $\pm 20^\circ$, Roll: $\pm 10^\circ$, Swivel: 360°

Packaging Specifications

Dimensions: 19.9" x 11.5" x 3.9" (W x D x H)

Weight: 6 lb

*Excluding PowerLite 1720, 1725, 1730W and 1735W



Easy cable
management

High-security Projector Ceiling Mount

For maximum security and flexibility

With a two-piece tray and unique key lock, this mount provides the highest level of safety and security. Designed with a sleek, low profile, it fits perfectly in practically any environment.

- Fits all Epson business projectors* up to 25 lb
- Unique, pick-resistant, five-wafer, screw-type key lock
- Two interlocking steel trays provide access and stability to the projector during installation
- Simple ball-and-socket design makes it easy to achieve precise registration without using any tools
- Quick and easy cable management
- Comes fully assembled and ready to be installed to any 1.5" pipe

Part Number: ELPMBATA

Dimensions: 14.4" x 10.9" x 4.9" (W x D x H)

Weight: 7.9 lb

Color: White

Tilt: $\pm 20^\circ$, Roll: $\pm 10^\circ$, Swivel: 360°

Packaging Specifications

Dimensions: 14.8" x 11.3" x 5.6" (W x D x H)

Weight: 9.5 lb

*Excluding PowerLite 1810p, 1825, G5000, G5150NL, G5200WNL and G5350NL

Mount accessories for use with all Epson projectors



Adjustable Suspended Ceiling Channel Kit

- Mounts above a 2' x 2' or 2' x 4' ceiling tile to a structural ceiling with tie wires
- Includes tie wire supports and a flush mounting tube
- 1.5" pipe fitting for attachment to an adjustable extension column
- Two knockout panels for electrical outlet boxes
- 13.9" continuous, uninterrupted projector adjustment
- Escutcheon ring included for a clean finish

Part Number: ELPMBP01

Maximum Weight Load: 50 lb

Color: White



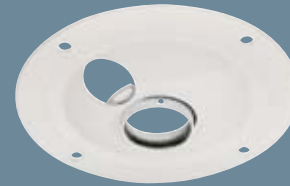
False Ceiling Plate Kit

- Replaces a 2' x 2' ceiling tile and mounts to a structural ceiling with tie wires
- Offers five different points for mount attachment with a convenient, two-piece design
- Includes tie wire supports and a flush mounting tube
- 1.5" pipe fitting for attachment to an adjustable extension column
- Two knockout panels for electrical outlet boxes

Part Number: ELPMBP02

Maximum Weight Load: 50 lb

Color: White



Structural Round Ceiling Plate

- Mounts to a wood joist or structural concrete ceiling
- Features a cable management access hole
- 1.5" pipe fitting for attachment to an adjustable extension column

Part Number: ELPMBP03

Maximum Weight Load: 150 lb

Color: White



Adjustable Extension Column (Pipe) 8" – 11"

- Includes an 8" – 11" adjustable extension (adjusts in 1-inch increments)
- Features a pipe fitting, threaded on both ends
- Offers notched ends for use with set screws to provide added safety and security
- Designed to allow cable management

Part Number: ELPMBP01

Color: White



Epson America, Inc.
3840 Kilroy Airport Way
Long Beach, California 90806
www.epson.com

Epson Canada, Ltd.
3771 Victoria Park Avenue
Toronto, Ontario M1W 3Z5
www.epson.ca