

AudioBox™ 44VSL

Quick Start Guide



English

Español

Deutsch

Français

0.1 Important Safety Instructions



The exclamation point within an equilateral triangle is intended to alert the user to the presence of important operating and maintenance (servicing) instructions in this manual.



The lightning flash with arrowhead symbol within an equilateral triangle is intended to alert the user to the presence of uninsulated "dangerous" voltage within the product's enclosure that may be of sufficient magnitude to constitute a risk of electric shock to humans.



CAUTION: TO REDUCE THE RISK OF ELECTRIC SHOCK, DO NOT REMOVE THE COVER. NO USER-SERVICEABLE PARTS INSIDE. REFER SERVICING TO QUALIFIED PERSONNEL.



CAUTION: To reduce the risk of electric shock, do not expose this appliance to rain and moisture. The apparatus shall not be exposed to dripping or splashing liquids and no object filled with liquids, such as vases, shall be placed on the apparatus.



CAUTION: These service instructions are for use by qualified service personnel only. To reduce the risk of electric shock, do not perform any servicing other than that contained in the operation instructions. Repairs must be performed by qualified service personnel.

1. Read these instructions.
2. Keep these instructions.
3. Heed all warnings.
4. Follow all instructions.
5. Do not use this apparatus near water.
6. Clean only with dry a cloth.
7. Do not block any ventilation openings. Install in accordance with the manufacturer's instructions.
8. Do not install near any heat sources, such as radiators, heat registers, stoves, or other apparatus (including amplifiers) that produce heat.

9. Do not defeat the safety purpose of the polarized or grounding-type plug. A polarized plug has two blades, with one wider than the other. A grounding-type plug has two blades and a third grounding prong. The wide blade and the third prong are provided for your safety. If the provided plug does not fit into your outlet, consult an electrician for replacement of the obsolete outlet.
10. Protect the power cord from being walked on or pinched, particularly at plugs, convenience receptacles, and the point where they exit from the apparatus.
11. Use only attachments/accessories specified by PreSonus.
12. Use only with the cart, stand, tripod, bracket, or table specified by the manufacturer or sold with this apparatus. When a cart is used, use caution when moving the cart/apparatus combination to avoid injury from tip-over.



13. Unplug this apparatus during lightning storms or when unused for long periods of time.
14. Servicing is required when the apparatus has been damaged in any way, such as if a power-supply cord or plug is damaged; or liquid has been spilled, or objects have fallen, into the apparatus; or if the apparatus has been exposed to rain or moisture, does not operate normally, or has been dropped. All PreSonus products in the USA should be serviced at the PreSonus factory in Baton Rouge, Louisiana. If your product requires a repair, contact support@presonus.com to arrange for a return-authorization number. Customers outside the USA should contact their local distributor. Your distributor's contact information is available at www.presonus.com.
15. The apparatus shall be connected to a Mains power outlet with a protective grounding/earthing connection.
16. Where the Mains plug or an appliance coupler is used as the disconnect device, the disconnect device shall remain readily operable.

EU Directives on the Protection of the Environment and Other Euro Stuff

RoHS This product is compliant with the EU Directive 2011/65/EU for the Restriction of the use of Certain Hazardous Substances in Electrical and Electronic Equipment. No lead (Pb), cadmium (Cd), mercury (Hg), hexavalent chromium (Cr+6), PBB or PBDE is intentionally added to this device. Any traces of impurities of these substances contained in the parts are below the RoHS specified threshold levels.

REACH This product is compliant with the European Union Directive EC1907/2006 for the Registration, Evaluation, Authorization, and Restriction of chemicals (REACH) and contains none or less than 0.1% of the chemicals listed as hazardous chemicals in the REACH regulation.

WEEE This symbol on the product or its packaging indicates that this product must not be disposed of with other waste. Instead, it is your responsibility to dispose of your waste equipment by handing it over to a designated collection point for the recycling of waste electrical and electronic equipment. The separate collection and recycling of your waste equipment at the time of disposal will help conserve natural resources and ensure that it is recycled in a manner that protects human health and the environment. For more information about where you can drop off your waste equipment for recycling, please contact your local city recycling office or the dealer from whom you purchased the product.



CE This product complies with the European Union Council Directives and Standards relating to electromagnetic compatibility EMC Directive (2006/95/EC) and the Low Voltage Directive (2004/108/EC).

1

Hook Up your AudioBox 44VSL

6

Consult the Rear and Front Panel Connections drawings on page 6-7 and the basic hookup diagram on page 8.

2

Install the AudioBox Driver and VSL

9

Included with your AudioBox driver is the installation for Virtual StudioLive™ software. VSL lets you create monitor mixes with dynamics and EQ on each channel. You can even print these effects to your recording! Go to page 9.

3

Install and Authorize Studio One Artist

10

Your AudioBox 44VSL comes complete with a professional and easy-to-use DAW, Studio One Artist, that will turn your computer into a music studio and get you up and recording in less time than you can say “number one song”.

4

Set your Levels and Record!

15

Your AudioBox 44VSL offers your two ways to create monitor mixes for the ultimate flexibility in monitoring. This section takes you through both.

5

Want to Learn More?

22

Want to read all about your AudioBox 44VSL's Tech Specs? Can't wait to dive into Virtual StudioLive? Dying to be the Studio One guru in your neighborhood? Visit these resources to learn more!!

English

Español

Deutsch

Français

Introduction



Thank you for purchasing the PreSonus AudioBox™ 44VSL. PreSonus Audio Electronics, Inc., has designed the AudioBox 44VSL utilizing high-grade components to ensure optimum performance that will last a lifetime. Loaded with 4 high-headroom, XMAX™ microphone preamplifiers; a built-in, 4x4 USB 2.0 recording and playback interface; MIDI I/O; Fat Channel processing with compressors, limiters, downward expanders, and 3-band EQs; DSP effects; and more, AudioBox 44VSL breaks new ground for music-production tools. All you need is a computer with a USB 2.0 connection, a few microphones and cables, powered speakers, and your instruments, and you are ready to record in the studio or in front of an audience!

We encourage you to contact us at 225-216-7887 (9 a.m. to 5 p.m. Central Time) with any questions or comments you may have regarding your PreSonus AudioBox. PreSonus Audio Electronics is committed to constant product improvement, and we value your suggestions highly. We believe the best way to achieve our goal of constant product improvement is by listening to the real experts: our valued customers. We appreciate the support you have shown us through the purchase of this product. We are confident that you will enjoy your AudioBox 44VSL!

A Quick Note About This Quick Start Guide: *This Quick Start Guide is written to help you get acquainted with your AudioBox 44VSL. Complete information is in the User Manual located on your AudioBox Driver disc. We suggest that you use the User Manual to familiarize yourself with the features, applications, and correct connection procedures for your AudioBox before trying to connect it to your computer. This will help you avoid problems during installation and setup.*

Throughout the User Manual you will find Power User tips. These tips provide tricks to help you become a seasoned pro with your AudioBox. In addition to the Power User tips, you will find an assortment of audio tutorials at the back of the User Manual. These tutorials cover everything from microphone placement to equalizer and compression suggestions and are included to help you get the most from your AudioBox 44VSL.

1.0 Hook up your AudioBox 44VSL

1.1 Front Panel Connections

Microphone / Instrument

Preamps. Channels 1 and 2 of the AudioBox 44VSL have an XMAX™ microphone preamp and an instrument preamp. The combo connector lets you use either 1/4" phone or XLR connectors in the same jack. Use the 1/4" jacks to connect guitars or other unamplified instruments. Use the XLR jacks to connect your favorite microphone.

Mixer Control. This knob crossfades between the analog input signal of the preamps and the playback signal from your computer. If the knob is at 12 o'clock, the input and playback systems will be equally balanced.

48V Button. This button activates phantom power for both microphone preamps.

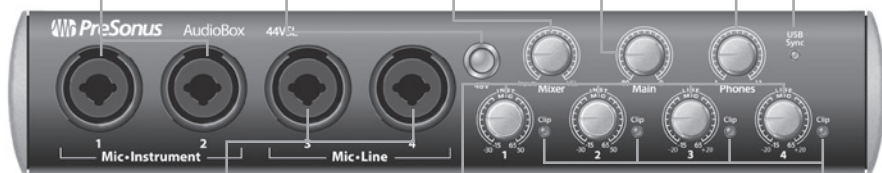
Main Level. This knob controls the output level for the Main Outputs on the back of the unit.

Phones Level.

This knob controls the output level for the Phones (headphone) output on the back of the unit.

USB/Sync LED.

This LED indicates power and proper USB sync. It will illuminate red when the AudioBox 44VSL is properly powered and blue when it is properly synced to your computer.



Microphone / Line Inputs. Channels 3 and 4 of the AudioBox 44VSL have both an XLR microphone input and a balanced line input. The combo connector lets you use either 1/4" phone or XLR connectors in the same jack.

Use the 1/4" jacks to connect keyboards and other line-level devices. Use the XLR jacks to connect your favorite microphone.

Input Trim Controls. These knobs adjust the input gain level for their respective inputs.

Clip Indicators. All channels feature a clip LED next to the trim control. The red clip indicator LED will illuminate when the channel's input signal reaches 0 dBFS.

1.2 Rear-Panel Connections

USB 2.0 Connection. This is where you connect the USB cable from your AudioBox 44VSL to your computer.

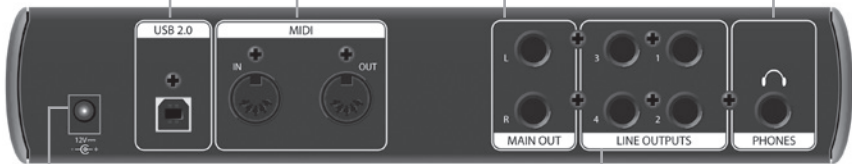
MIDI In and Out Ports. The MIDI input and output allow connection and communication with external MIDI controllers and other MIDI equipment.

Main Outputs. This is where you connect your studio monitors or monitoring system. The output level of the Main Outputs is controlled by the Main volume knob on the front of the unit.

1/4" Stereo Headphone Output. This is where you connect your headphones. The output level is controlled by the Phones volume knob on the front of the unit.

Power Supply Connection. This is where you connect the external power supply for your AudioBox 44VSL.

Line Outputs. These are general-purpose line-level outputs. All four Line outputs can be accessed by your computer and can be used for separate mixes, additional speakers, etc.



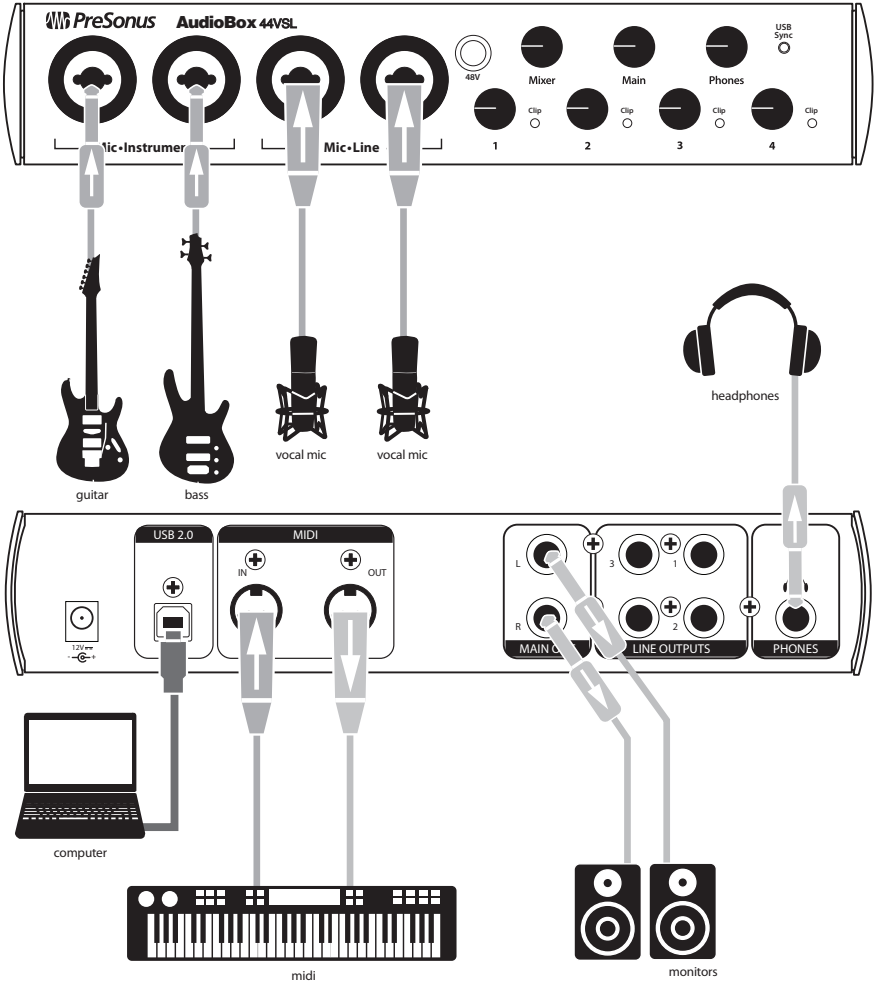
English

Español

Deutsch

Français

1.3 Basic Hookup Diagram



Consult your Owner's Manual (on disc) for many more hookup diagrams.

English

Español

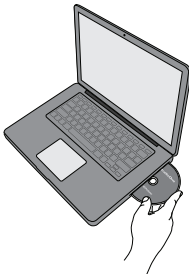
Deutsch

Français

2.0 Install the AudioBox Driver and VSL

The AudioBox 44VSL is a revolutionary audio interface that provides both simple analog monitoring and powerful monitoring through Virtual StudioLive. With VSL, you can create extremely low-latency monitor mixes using the same dynamics processing and equalization found in the StudioLive 16.0.2 mixer, plus add reverb and delay.

2.1 Basic Instructions for Windows and Mac



For complete information on using VSL, see Section 4.1 in your AudioBox 22/44VSL User Manual.

After inserting the Installation CD into your disc drive, run the AudioBox installer. It will take you through each step of the installation process.

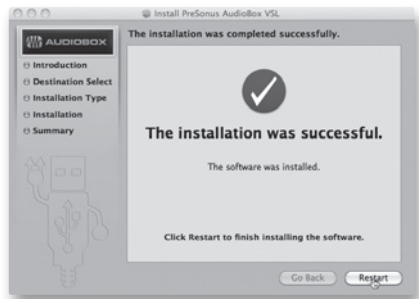
Before you start the installation, quit all applications, and connect your AudioBox 44VSL to an available USB 2.0 or 3.0 port on your computer.



Windows Vista Users: If you see any Windows Security alerts, click "Install this driver software anyway."

After you have followed the onscreen instructions, you will be alerted that the installer has successfully finished and it will prompt you to reboot your computer.

Click "Finish" (PC) or "Restart" (Mac) to automatically restart your computer. .



English

Español

Deutsch

Français

3.0 Install and Authorize Studio One Artist

For complete information on using, installing and authorizing Studio One see Section 4.3 in your AudioBox 22/44VSL Owner's Manual or Studio One User Manual (located in the Studio One Help menu).

Your AudioBox 44VSL comes with Studio One Artist recording and production software. Studio One Artist provides you with all of the tools necessary to capture and mix a great performance. As a valued PreSonus customer, you are also eligible for a discount upgrade to Studio One Producer or Studio One Professional. For more details on the Studio One upgrade program for PreSonus customers, please visit <http://studioone.presonus.com/>.

If you use another DAW and do not wish to install Studio One Artist, please skip to Section 4.



1. Insert your Studio One Artist installation DVD into your computer's DVD drive.
2. Windows: The Studio One Installer will launch automatically, follow the onscreen instructions.

Mac: Drag the Studio One application icon over the "Applications" folder. Make sure to run Studio One from the Applications folder on your hard drive.



English

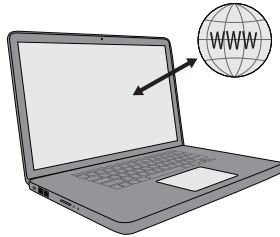
Español

Deutsch

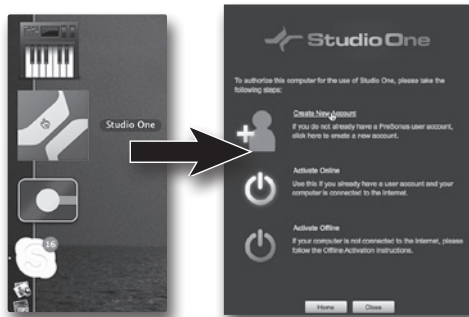
Français

3.1 Authorizing Studio One Artist

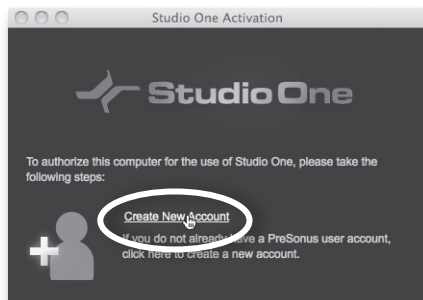
1. Make sure that your computer is connected to the Internet. (For instructions on authorizing Studio One without an Internet connection, please consult Section 4.2 of the AudioBox 22/44VSL manual.)



2. Launch the Studio One Artist program by double-clicking on its icon on your desktop or in your applications folder. The Activate Studio One menu will appear.



3. Click the Create a New Account link.



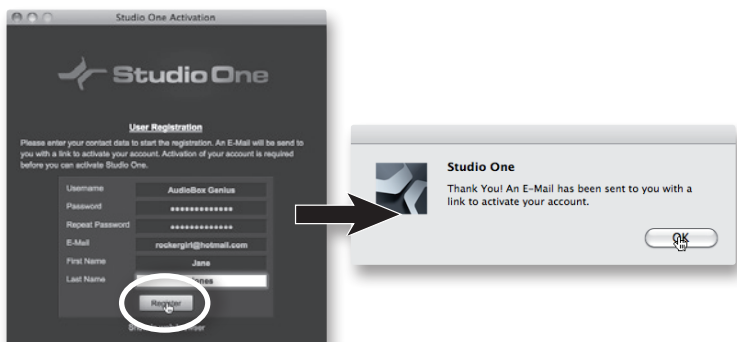
English

Español

Deutsch

Français

4. Fill out the form, making sure that your email is correct. When you are finished, click Register.



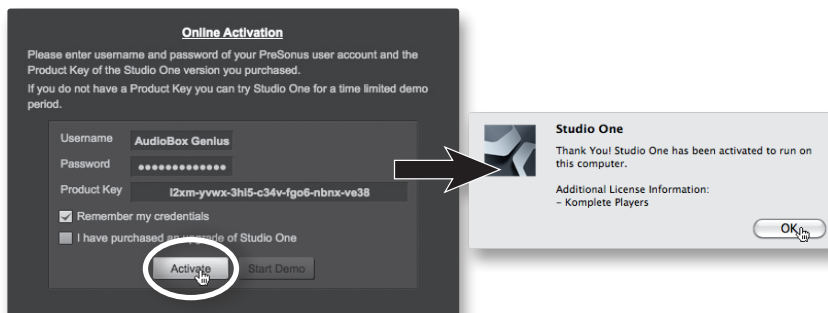
5. Write down the username and password you chose. This is the information you will use to register all your PreSonus products as well as to log into the PreSonus forum.

USERNAME _____

PASSWORD _____

6. An email from PreSonus Registration will be automatically sent to the email address you provided in order to verify your email address. Don't forget to Activate your account the next time you check your email!

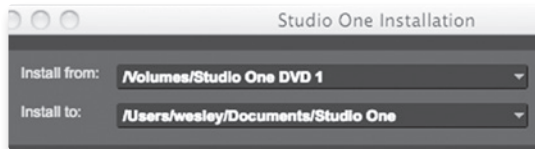
7. Enter the username and password you just created and the product key from your Studio One Artist installation disc. Click on the **Activate** button to finish the activation process.



3.2 Installing the Studio One Artist Content

Studio One Artist comes with many audio loops and instruments that are organized into Soundsets, as well as demo songs and third-party plug-in instruments. The first time you launch Studio One, you will be asked to install the content automatically; however, any part of the content package can be installed at any time by opening the Studio One 2.0 menu and selecting "Studio One Installation..." in Studio One Artist.

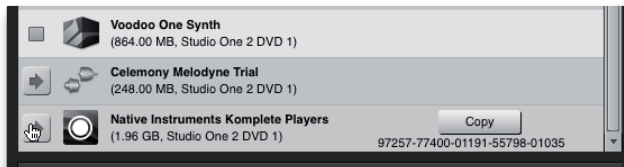
1. By default, each package will be selected for installation. Make sure your Studio One DVD is inserted in your computer and select to what location on your computer you'd like the content to save.



2. Click Install Packets.



3. To install any of the third-party content, click on the arrow button next to its name in the content list (Celemony Melodyne Trial, Native Instruments Komplete Player) to launch its installer.



4. Notice that next to Native Instruments Komplete Player there is a serial number listed. You will need this numbers to authorize this plug-in the first time you open it.
5. When you have finished installing content, click the "Done" button.



4.0 Set your Levels and Record!

Before you begin, there are a few general rules of thumb that we recommend you follow:

- Always turn both the Main and Phones knobs on the front panel down before making connections.
- Before plugging or unplugging a microphone or engaging phantom power, make sure the trim level has been turned all the way down for that channel.
- Do not allow your inputs to clip. Watch the clip LEDs; when these LEDs turn red, they are indicating that the analog-to-digital converters are being overdriven. Overdriving the converters will cause digital distortion, which sounds terrible. The XMAX™ preamps in your AudioBox 44VSL provide plenty of headroom; take advantage of it.
- Your studio equipment should be powered on in the following order:
 - A. Sound sources (keyboards, direct boxes, microphones, etc.) connected to the AudioBox inputs
 - B. AudioBox 44VSL and Computer
 - C. Power amplifiers or powered monitors

When it's time to power down, your system should be turned off in the reverse order.

Now that you know what **not** to do, let's get some audio going!

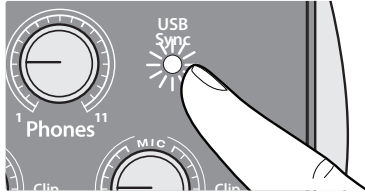
4.1 Creating a Monitor Mix

Included with your AudioBox 44VSL is Virtual StudioLive (VSL). This powerful piece of software allows you to use your AudioBox like a 4-channel version of a StudioLive 16.0.2 digital mixer, giving you access to the same dynamics processing, EQ, and effects processing on every channel and output. Musicians rely on aural cues when performing, and their performance can vary depending on what they hear in their monitors. Adding just the right amount of compression, EQ, and reverb results in a better performance and ultimately a better recording.

Getting Your AudioBox 44VSL Ready

1. Turn all the knobs on your AudioBox all the way counter-clockwise.

-
2. Connect your AudioBox 44VSL to your computer and make sure that the power LED is illuminated.

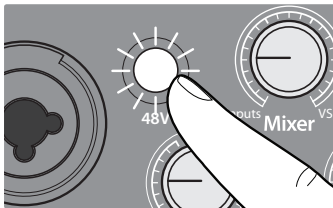


-
3. Grab a microphone and a mic cable and plug them into the AudioBox's Channel 1 mic input.

-
4. Connect the Main Outputs of your AudioBox to your power amplifier or powered monitors using balanced cables..

-
5. If you're using passive speakers, connect them to your power amplifier using speaker cable.

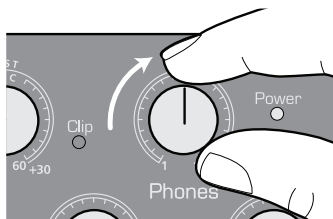
-
6. If your microphone requires phantom power, press the 48V button on the front panel.



-
7. Turn on your amplifier or powered monitors.

-
8. Connect a pair of headphones to your AudioBox 44VSL.

-
9. Turn the AudioBox **Phones** volume control to the 12 o'clock position.



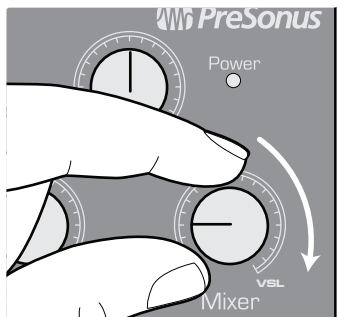
English

Español

Deutsch

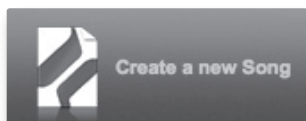
Français

10. Turn the Mixer knob on the front panel of your AudioBox all the way clockwise to the “VSL” position. While using Virtual StudioLive, you will be monitoring the playback through VSL, so you’ll remove any analog monitoring from the mix.

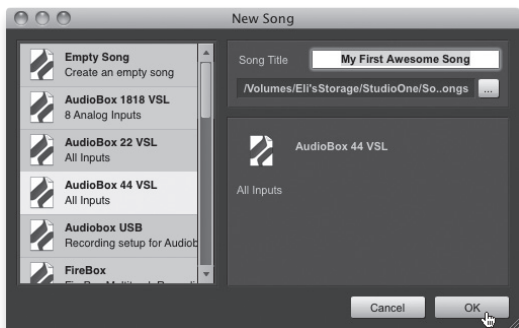


Configuring Studio One Artist

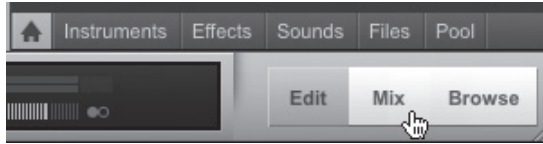
11. Launch Studio One Artist. If you are using a different DAW or no DAW at all, you can skip to Step 18.
12. From the Start page, select “Create a new Song.”



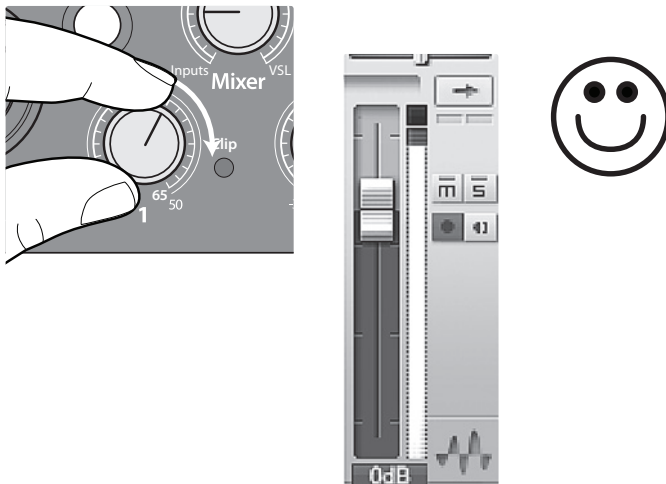
13. To begin a new Song, select “**AudioBox 44VSL**” from the Templates list.



-
14. Give your Song a name.
-
15. Click the **OK** button when you are finished.
-
16. Click on the MIX button to open the Console in Studio One



-
17. Speak into the microphone while watching the meter on Channel 1 in Studio One and slowly turning the AudioBox Input 1 Trim knob clockwise.

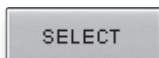


Creating a Monitor Mix in AudioBox VSL

18. Launch the AudioBox VSL application and click "Enable VSL."



-
19. Select Channel 1.



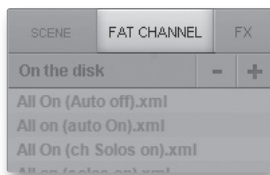
English

Español

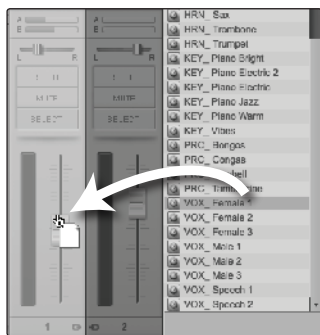
Deutsch

Français

20. In the Browser, click on the Fat Channel tab. You will see an assortment of presets.



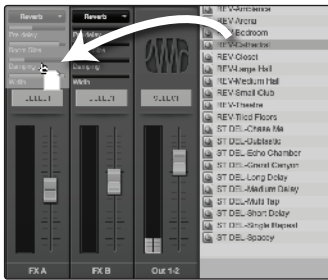
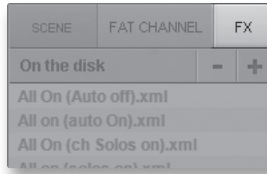
21. Drag a vocal preset from the Browser and drop it onto Channel 1.



22. Put on your headphones and speak into the microphone. If you would like to make some adjustments to the Fat Channel, double-click on any of the microviews. This will allow you to adjust your sound to taste.



23. Click on the FX tab in the Browser. You will see an assortment of Reverb and Delay presets.



24. Choose a Reverb preset and drag it onto FXA.

25. Again, while speaking into the microphone, adjust the FXA Send level up until you are happy with the amount of reverb.



26. If you would like to record with the Fat Channel effects, enable the Post button at the top of the Channel strip.

27. Click back over to Studio One and click the "Record" button in Studio OneArtist to begin recording your first masterpiece!



28. To playback your recording, click on the "Return to Zero" button in the transport in Studio One Artist and then click on the "Play" button.



English

Español

Deutsch

Français

5.0 Want to Learn More?

AudioBox 44VSL and VSL Information

Complete information about your AudioBox 44VSL can be found in the User Manual. Your User Manual is located on the VSL installation disk. The AudioBox 44VSL User Manual contains complete operating instructions for your interface as well as Virtual StudioLive software.

Other useful information in the AudioBox 44VSL User Manual:

- Advanced Hookup Diagrams
- Microphone-placement Technique Tutorial
- Dynamics Processing Tutorial
- Equalizers Tutorial
- Reverb and Delay Tutorial
- Monitoring and FX Bus Mixing Tutorial
- Troubleshooting Guide

Studio One Artist Information

The Studio One Artist Advanced Quick Start Guide can be found in your AudioBox 44VSL User Manual. Complete information about Studio One can be found in the Studio One User Guide. The Studio One User Guide is installed on your computer with Studio One Artist and can be accessed from the Help menu in Studio One.

A tutorial video is also installed with the Studio One Artist Demos and Tutorial content bundle. This video guides you through basic operation of the application and is located in the Demos and Tutorials tab on the Start page in Studio One.

More videos about Studio One can be found at www.presonus.com.

Tech Support and Online Resources

Visit www.presonus.com and select **Knowledge Base** from the Support tab for answers to many commonly asked questions.

English

Español

Deutsch

Français

If all else fails...

In the USA:

Call PreSonus Technical Support at 1-225-216-7887, Monday through Friday between 9 a.m. and 5 p.m. Central Time.

Outside the USA:

Contact your PreSonus distributor.

Anywhere in the world:

Contact PreSonus Technical Support through our Web portal:

<http://support.presonus.com/home>

English

Español

Deutsch

Français



Declaration of Conformity

Responsible Party: **PreSonus Audio Electronics**

Address: **7257 Florida Blvd, Baton Rouge,
LA 70806 USA**

Phone: **1-225-216-7887**

declares that **AudioBox™ 44VSL** complies with
Part 15 of the FCC rules.

Operation is subject to the following two conditions:

1. This device may not cause harmful interference, and;
2. This device must accept any interference received, including interference that may cause undesired operation

Note: No product support is available when you call the number above. Refer to your Certificate of Warranty in your User Manual for PreSonus' Technical Support telephone number.



Baton Rouge • USA • www.presonus.com

English

Español

Deutsch

Français

Added bonus: PreSonus' previously Top Secret recipe for...

Jambalaya

Ingredients:

- 5 lbs link andouille sausage
- 3 lbs boneless chicken
- 2 lbs ground beef
- 3 lbs onions (yellow or purple)
- 2 stalks of celery
- 1 lb bell peppers (green or red)
- 1 batch green onions
- 3 lbs rice
- Tony Chachere's Cajun Seasoning
- 1 bottle chicken stock concentrate (or 3 cubes chicken bullion)
- 1 can Rotel tomatoes with chilies, diced (regular hot)
- Tabasco sauce

Cooking Instructions:

1. In a 16 qt. pot or larger, slice link sausage and pan-fry until brown.
2. Add ground beef and brown.
3. Do not remove from pot Add diced onions, celery, and bell peppers, 1 can Rotel Original diced tomatoes w/chilies, 3 oz concentrate chicken stock, ½ teaspoon of Cajun seasoning, 1 teaspoon of Tabasco hot sauce (or more...maybe lots more).
4. Cook until onions are translucent.
5. Add chicken and cook until it turns white.
6. Add diced green onions, 1 tsp. salt, ½ gallon water and bring to a boil.
7. Add rice and bring to a boil. Cook on high for 8 minutes, covered, stirring every 2 minutes
8. Cook covered on low for 10 minutes, stirring only once.
9. Turn off and let sit for 30 minutes.
10. Serve and enjoy!

Serves 20

© 2012 PreSonus Audio Electronics, Inc. All Rights Reserved. PreSonus, StudioLive, Studio One, Capture, Virtual StudioLive, XMAX, and AudioBox are trademarks of PreSonus Audio Electronics, Inc. Macintosh is a trademark of Apple, Inc., in the U.S. and other countries. Windows is a registered trademark of Microsoft, Inc., in the U.S. and other countries. Other product names mentioned herein may be trademarks of their respective companies. All specifications subject to change without notice... except the jambalaya recipe, which is a classic.

English

Español

Deutsch

Français

AudioBox™ 44VSL

Quick Start Guide

EMC Statement:

NOTE: This equipment has been tested and found to comply with the limits for a Class B digital device, pursuant to part 15 of the FCC Rules. These limits are designed to provide reasonable protection against harmful interference in a residential installation. This equipment generates, uses, and can radiate radio frequency energy and, if not installed and used in accordance with the instructions, may cause harmful interference to radio communications. However, there is no guarantee that interference will not occur in a particular installation. If this equipment does cause harmful interference to radio or television reception, which can be determined by turning the equipment off and on, the user is encouraged to try to correct the interference by one or more of the following measures:

- Reorient or relocate the receiving antenna.
- Increase the separation between the equipment and the receiver.
- Connect the equipment into an outlet on a circuit different from that to which the receiver is connected.
- Consult the dealer or an experienced radio/TV technician for help.

CAUTION: Changes or modifications to this device not expressly approved by PreSonus Audio Electronics could void the user's authority to operate the equipment under FCC rules.

This apparatus does not exceed the Class A/Class B (whichever is applicable) limits for radio noise emissions from digital apparatus as set out in the radio interference regulations of the Canadian Department of Communications.

ATTENTION — Le présent appareil numérique n'émet pas de bruits radioélectriques dépassant les limites applicables aux appareils numériques de classe A/de classe B (selon le cas) prescrites dans le règlement sur le brouillage radioélectrique édicté par le ministère des communications du Canada.



7257 Florida Boulevard • Baton Rouge,
Louisiana 70806 USA • 1-225-216-7887
www.presonus.com

Part# 825-AB0008-D