

Contractor Elite In-Ceiling Speaker Series

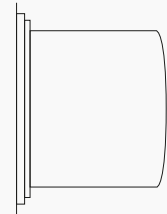
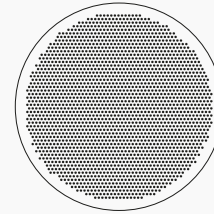
SPCE6T 6.5" 70V premium in-ceiling speaker, sold individually

Features

- Premium components and sound for commercial installations
- Magnetic baffle for easy installation and package includes both black and white colored grilles
- Built-in selectable 70V transformer with settings of 32W, 16W, 8W, 4W, 2W, 1W and 8 Ohms
- Dual positive and negative speaker terminals for easy chaining
- Safety loop built into back panel



— 11.26" (Dia.) —



— 6.1" (D) —

Specifications

| | |
|-------------------------------|---|
| RMS Power | 60W |
| Max. Power..... | 120W |
| Transformer Type | 70V |
| Transformer Power Taps | 32-16-8-4-2-1W and 8 ohms |
| Termination Type | Phoenix connector |
| Sensitivity (1W/1M)..... | 91dB |
| Maximum SPL | 102dB |
| Driver Impedance | 8 Ohms |
| Magnet Size and Material..... | 14.4 oz. ferrite |
| Frequency Response Range.. | 50Hz-20kHz |
| Dispersion @ 1000Hz | 130° |
| Driver | 6.5" aluminum woofer, 1.2" PEI tweeter |
| Speaker Dimensions | 11.26" (Dia.) x 6.1" (D) |
| Mounting Dimensions | 10.44" |
| Minimum Mounting Depth..... | 6.2" |
| Weight | 11.46 lbs. |
| Material..... | ABS baffle, steel backcan |
| Color..... | Black baffle and includes white and black grilles |