

REDLINE™



A large crowd of people is seen from behind, looking towards a stage in a large arena. The stage is illuminated with bright red and blue spotlights. A large, stylized logo is visible on the ceiling. The word 'REDLINE' is overlaid in large, white, italicized letters with red diagonal bars on either side.

REDLINE

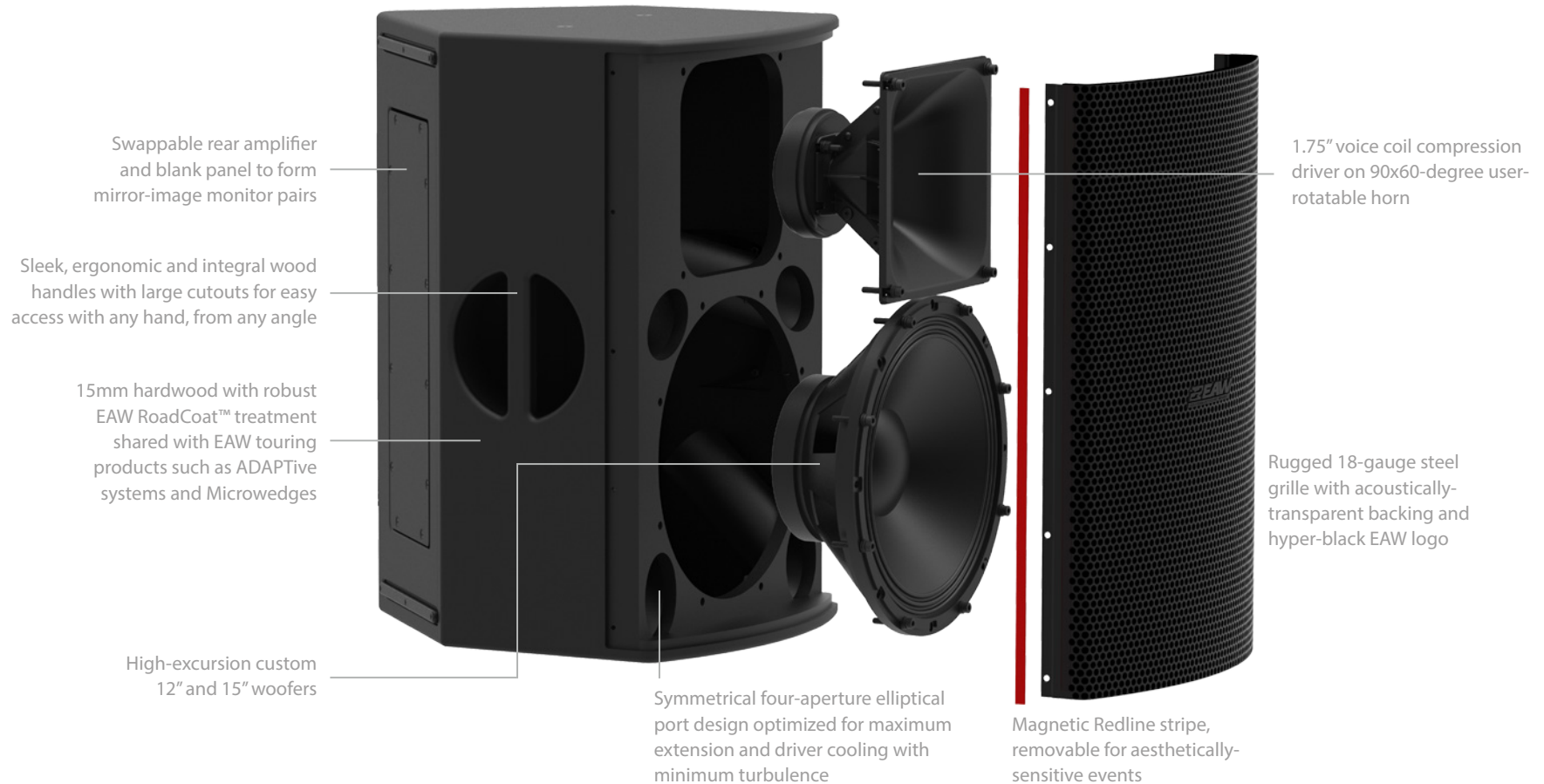
Redline™. Engineered for professionals. Engineered for you.

From the very outset, Redline was designed for you, the live audio professional. From corporate events to festivals, every aspect of the design has been targeted at making your life easier. From enclosure handling and fitments to acoustical and electronic components, Redline is built to live as you do: with demanding clients, tight schedules and even tighter budgets.

Corporate class Your world is hotel ballrooms, tents and exhibition halls. Redline sets up fast, requires little or no tuning, sounds spectacular and looks as good as it sounds. Your crew will love Redline because they know it's there. Your clients will love Redline because they don't.

Robust reinforcement Outdoor stages, pavilions, auditoria and festivals are your livelihood. Redline is flexible enough to serve as mains, fills, and monitors, allowing you to bring one system and cover them all.

Intelligent installations Your business lives in clubs, houses of worship, theaters and auditoria. Installs simply, sounds fantastic and works forever. Period.





Extreme performance.

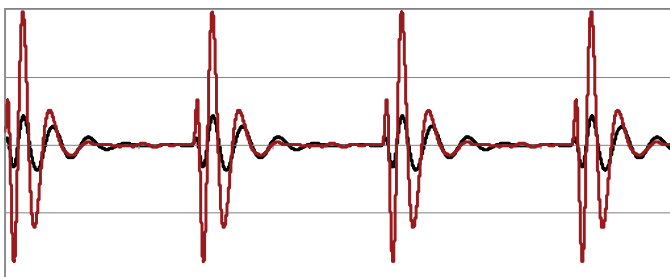
In a results-driven world, professionals rely on the rock solid, high performance tools that deliver – show after show.

Every Redline system contains highly-customized precision transducers that have been engineered to meet the specific demands of the Redline family. RL12 and RL15 offer perfectly consistent directivity via Beamwidth-Matched Crossovers¹ on 90x60° user-rotatable horns. Painstakingly-engineered 4-aperture elliptical ports provide huge bass support with no turbulence, while maximizing transducer-cooling air flow for utmost reliability.

Brilliant electronics.

Each Redline system includes a complete electronics module with processing and 1,250 watts (1,000W for LF, 250W for HF) of Class-D Power Factor Corrected amplification. Redline features renowned EAW Focusing^{TM2} processing to pristinely deliver the impulse response of a studio monitor and the impact of a freight train. Sophisticated DynOTM algorithms optimize the power transfer from amplifiers to transducers to audience to optimize headroom and integrity of sound at maximum output.

Three simple pre-defined voicing options help you get ready in minutes while sounding like you've tuned for hours. Push-button cardioid functionality (using two or more RL18S subwoofers) keeps low-frequency energy off the stage and on the audience. And a rear-panel LED mute keeps Redline invisible in aesthetically-sensitive situations.



DynOTM – Headroom Redefined

DynO dynamic optimization actively tracks input spectrum and power delivery, continually maximizing output and fidelity at any drive level

No matter the volume level, Redline sounds like Redline

¹ **Beamwidth-Matched Crossovers** Introduced over a decade ago for our MK series loudspeakers, EAW Engineers use carefully-designed HF horns and crossovers to eliminate polar irregularities through the crossover point.

² **Focusing** Use of advanced digital signal processing to perfect the impulse response of a loudspeaker in the time domain. Eliminating horn “honk” and splashiness, this makes the loudspeaker sound more like a studio monitor than a “PA” speaker.

Three pre-tuned gig-ready voicings

Flush-mounted LED indicators for amplifier status, signal level and voicing mode, electronically dimmable for visually-sensitive situations

Road-glove-tested recessed and detented input attenuator and voicing select button, carefully chosen for accessibility and impact protection

1,250 watts of fanless Class-D, Power Factor Corrected amplification with EAW FocusingTM and DynOTM processing

PowerCon inlet and loop connectors

Integrated rigging points (two top, one rear for pull-back)

Protective feet for mirror-image monitor configurations

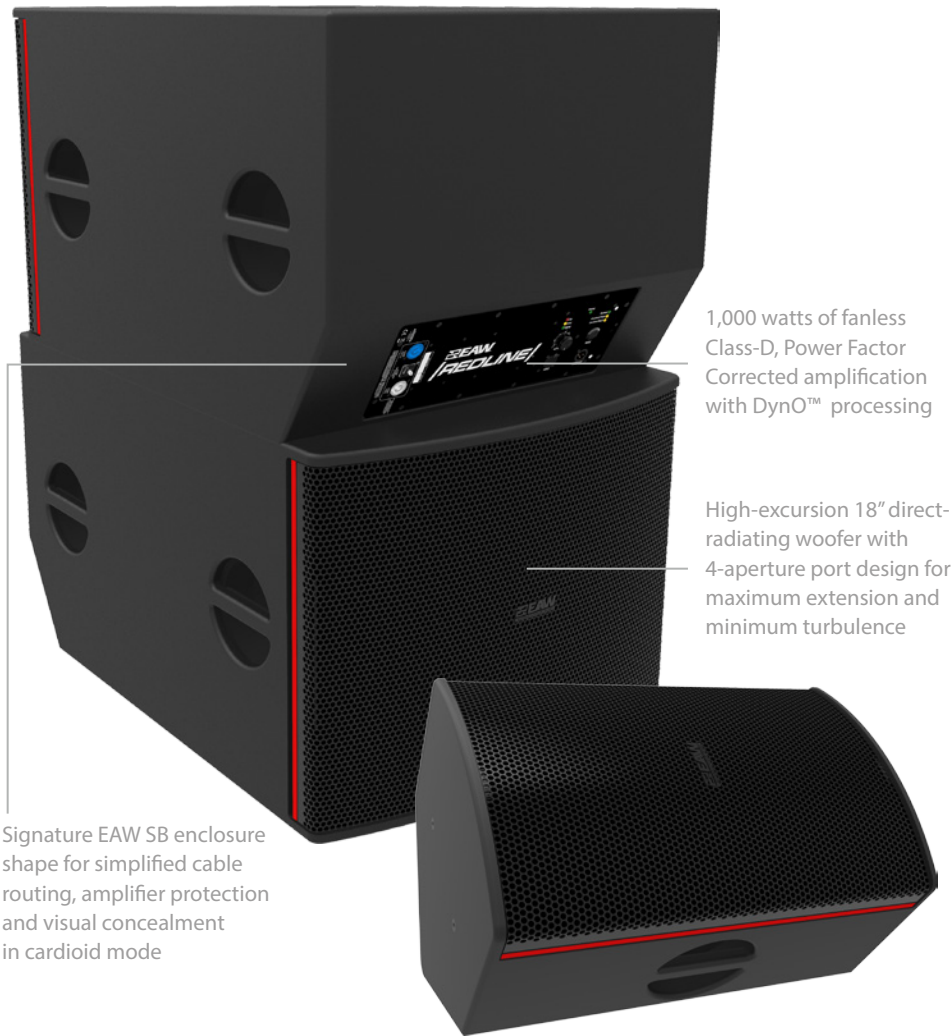




Road-ready enclosure.

With roots deeply entrenched in touring, EAW knows how to design enclosures for live sound reinforcement. Incorporating symmetrical monitor angles to form left-right wedge pairs, integral road glove-ready wood handles for portability, and sleek but strong sculpted grilles on a RoadCoat™ enclosure that can take a beating without showing it, Redline is meant to be used. And used. And used some more.

RL18S enclosure depth is optimized so that, with one subwoofer rotated, a cardioid pattern can be generated in seconds with two button presses.



RL12

Operating Range (-10 dB, Hz)	55 - 19k
Calculated Maximum Output Peak (dB SPL)	Full-range: 135
Nominal Coverage (degrees)	Horizontal: 90 / Vertical: 60
Subsystems	LF: 12-in cone, vented HF: 1-in exit compression driver, horn-loaded
Powering	Bi-amplified, internal
Dimensions (imperial / metric)	14.6x17.3x22.75 / 370x440x578



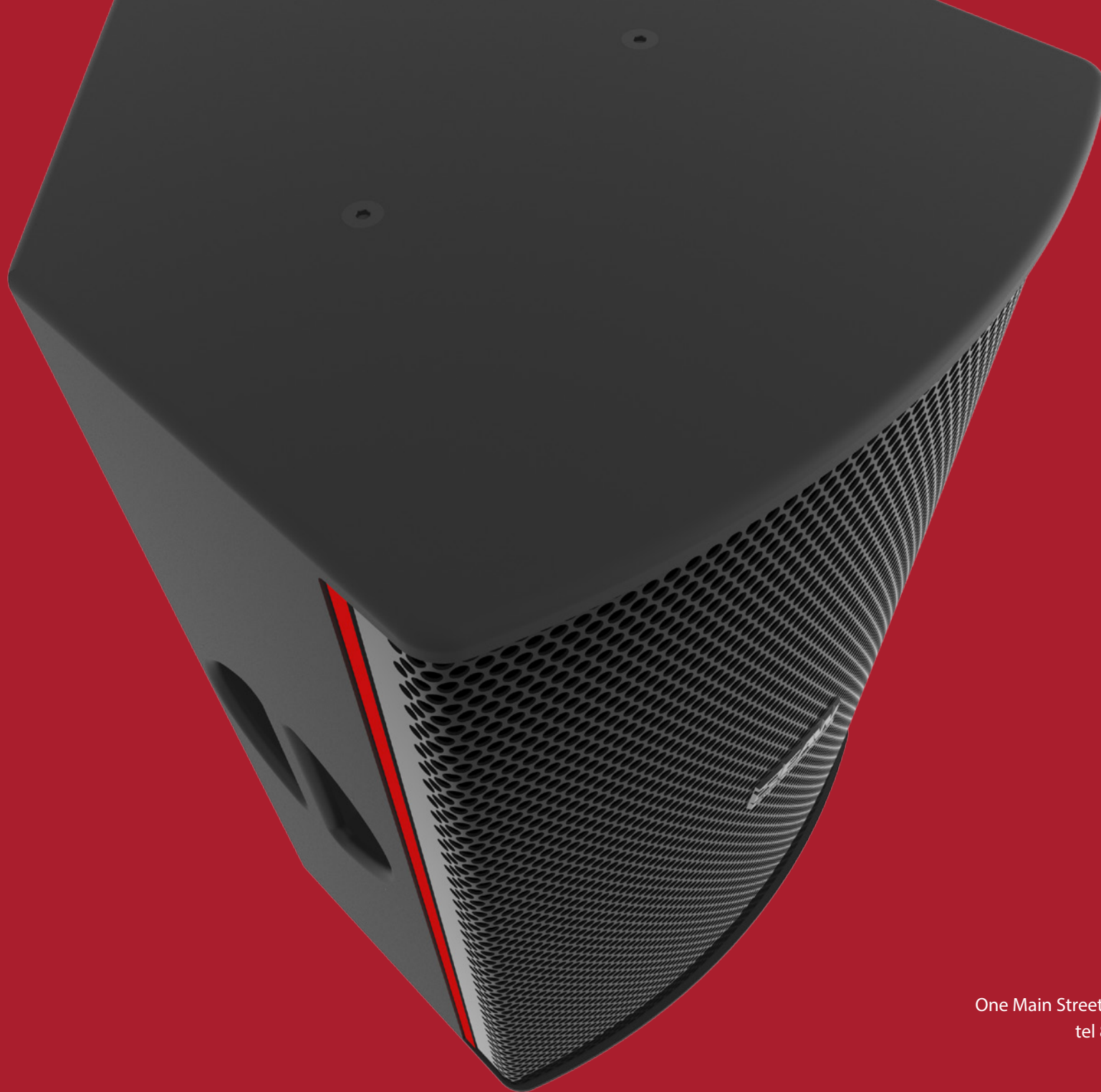
RL15

Operating Range (-10 dB, Hz)	50 - 19k
Calculated Maximum Output Peak (dB SPL)	Full-range: 135
Nominal Coverage (degrees)	Horizontal: 90 / Vertical: 60
Subsystems	LF: 15-in cone, vented HF: 1-in exit compression driver, horn-loaded
Powering	Bi-amplified, internal
Dimensions (imperial / metric)	17.6x19.8x25.75 / 447x503x654



RL18S

Operating Range (-10 dB, Hz)	30 - 160
Calculated Maximum Output Peak (dB SPL)	VLF (whole space): 127
Subsystems	VLF: 18-in cone, vented
Powering	Single-amplified, internal
Dimensions (imperial / metric)	24.8x33x19.9 / 631x838x506



Eastern Acoustic Works

One Main Street | Whitinsville, MA 01588 | USA

tel 800 992 5013 / +1 508 234 6158

www.eaw.com

©2015 LOUD Technologies Inc. EAW is a registered trademark of LOUD Technologies Inc in the U.S.A. and all other countries. All other trademarks referenced herein are the property of their respective owners. All rights reserved.
Design patents pending. Products are not drawn to scale. All terms, conditions, and specifications subject to change without notice.